

# “lyttelton harbour review”

community news from port lyttelton to port cooper

www.lytteltonharbour.info

15 April 2013

E88



## Local Hero's Just Keep Giving

Sky Tower Climb for Leukaemia

At any moment our volunteer fire fighters might be called out to control a blaze on the port hills, save a life from a burning building, or even prevent someone's home from flooding. When the siren blasts across this village these local hero's drop what they are doing, leave the family or workplace behind and answer the call to help.

This is why we find it so inspiring that on Saturday May 11 four members of the Lyttelton Volunteer Fire Brigade will be giving even more by racing up the 1103 stairs of the Auckland Sky Tower in full kit and breathing apparatus to help raise money for Leukaemia and Blood Cancer New Zealand.

This is the fourth year that brigade members have joined this gut busting event which has become a phenomenally popular challenge for fulltime and volunteer fire fighters from all over the country. Fifty one flights of stairs with nearly 25kg of extra weight, makes the finish area on the Sky Tower viewing platform look like a casualty clearing station.

And to show the dedication New Zealand fire fighters have to this cause, when entries opened online in February, it took less than an hour to fill the nearly five hundred places available.

Glen Walker, Paul McCulla, Kevin Hurl and Craig Smith have all been training on steps and steep streets around Lyttelton. Competition in three different age groups is intense, but the fire fighters never lose sight of the main goal which is to raise as much as possible for Leukaemia and Blood Cancer New Zealand.

Now you too can help sponsor the Lyttelton Brigade's Sky Tower Challenge, and every dollar donated goes direct to the charity.

Donate on Line at: [www.firefightersclimb.org.nz/view\\_group\\_event\\_profile/494](http://www.firefightersclimb.org.nz/view_group_event_profile/494)

Or watch out for our local fire fighters carrying red donation buckets around town as part of the fundraising effort. Support our guys, to support those with Leukaemia.



Article and Images: Glen Walker and the Lyttelton Volunteer Fire Brigade, with thanks

 **lytteltonharbour**  
**informationcentre**

Providing Quality Local and Visitor Information



**Professionals**

Kennard Real Estate Limited MREINZ  
[www.kre.co.nz](http://www.kre.co.nz)



## Village Bell for Lyttelton

Potential Gift from Saint Joseph's Church

Now here's a great idea from local resident Dave Sanders.

Dave is a parish member of St Joseph's and he laments that Lyttelton no longer hears the sound of church bells. He is proposing that Lyttelton's new town square incorporates a bell tower so that Lyttelton can once again hear the ringing of St Joseph's 160 year old bell.

Dave thinks the bell could be used for the following things:

- A reintroduction of an old Catholic ritual called Angelus. The bell would be rung at midday every Saturday in the square. Prior to the earthquakes this did happen every Saturday at St Joseph's
- At ANZAC ceremonies
- Special events such as the "Festival of Lights"
- Special occasions and celebrations
- When a cruise ship departs the harbour
- For daily midday ringing

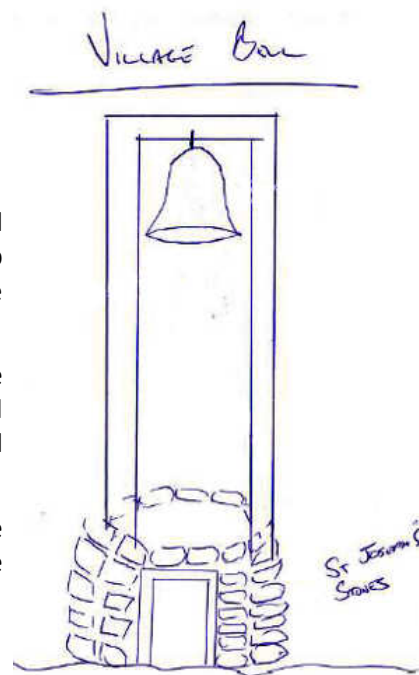
Dave would be happy to train people to ring the bells and he believes he can get approval from the Catholic Church to release the bell to the Lyttelton community. He has come up with a rough concept design to develop a simple tower design which he believes can be constructed with materials from the former church.

Dave has a real passion for this project and has already set the wheels in motion to make things happen. \$800 has already been raised and Dave is happy to engage with local businesses to develop the concept further, advocate on behalf of the project and negotiate with Bishop Barry once support for the project is realised.

All he now needs is support from local residents. If you like this idea or want more information please get in touch with Dave Sanders [dave.sanders@asb.co.nz](mailto:dave.sanders@asb.co.nz) or phone 03 328 8721 or mobile 027 500 2116

Article: Lyttelton Harbour Information Centre

Images: Sketch, Dave Sanders | Church, Sissi Stein-Abel - with thanks



## More Good News for Lyttelton

Recreation Ground Pavilion Opens

The city council announced the re-opening of the Lyttelton Recreation Ground Pavilion at Godley Quay on April 11.

This is great news for the rugby and soccer clubs who use the area. Effectively from this weekend they will be able to re-use this facility.

The pavilion has been assessed by Council appointed engineers and found not to be an earthquake prone building. Its seismic rating is 42 percent. Whilst the building did sustain minor earthquake damage and will be repaired, council has been advised that there is no impact on the health and safety of users or their effective use of the facility.

The Council's Facilities Rebuild team has chosen to leave repairs until the end of the winter rugby season when repairs can be combined with other maintenance works for the ground.

So "Welcome Home" to our sporting teams. No doubt a great relief to have operating clubrooms again.

Article: Lyttelton Harbour Information Centre

Images: Lyttelton Harbour Information Centre



# Lyttelton's Listening Post

Borderline Radio's Successful Transitional Art Project

Lack of venues is no obstacle to Borderline Ballroom projects. "Since our inception six years ago, we have always had to think outside the square when looking for places to perform" said Helen Greenfield. Comprising Lyttelton residents, Jo Burzynska, Helen Greenfield and Peter Wright as well as Christchurch's David Khan and Rory Dalley the collective have been organising events of "music from the margins" for the past five years. Some of their favourite venues have included the Timeball, Unanimity Lodge, The Basement, The Roastery, and their original home the Media Club. They have also had a presence at nearly all of the Festivals of Light and Summer Street Parties as well as hosting the Borderline Radio show on Volcano Radio on Sunday evenings until Shadbolt House's demise.

Helen said "now we have the opportunity to showcase Lyttelton's strong sonic arts and experimental music scene on a permanent public platform. The buildings may be gone but the sounds remain. If you visit the listening station, you might hear the Timeball mechanism being wound up, the delicate sounds of summer in the hills, a blast of noise-music, or a playful sound collage". Jo wrote and submitted the successful application to the Christchurch City Council and the team will all be helping out under Jo's curatorship "...keen to provide an interesting space to showcase local sound art and highlight the diversity of the port's music scene..."

It's envisaged that the installation will be set in the far north-west corner of the square, which is currently a rock feature – however, there is flexibility as to where it can be sited. It will consist of speakers permanently affixed to a wall and playback effected through a device mounted in a weatherproof and tamperproof box. Listeners will stand, or sit, in the range of the speakers to hear the various works, which will be changed on a semi-regular basis by the Borderline Ballroom collective.

The Borderline Ballroom team want to encourage people in and around Lyttelton to submit recordings for inclusion in this exciting project. Sounds will flow quietly, continuously and be free! To contribute to this exciting project or for more information please contact [borderlineballroom@gmail.com](mailto:borderlineballroom@gmail.com).

Article: Excerpts from Helen Greenfield and their original proposal written by Jo Burzynska, with thanks  
Adapted by the Lyttelton Harbour Information Centre



## Vic's Bread

A Farmers Market Stalwart

Vic's Bread has been operating at the Lyttelton Farmers Market since it's inception in September 2005, and Graeme talks about how they first came to be at the market. Duncan Wilcox a member of the original Farmers Market team convinced Graham that this would be a good thing to do. At the time Graham lived in Lyttelton and so he was really connected to the township. Graham still heads up the business but has a more hands off role and his daughter Amy runs the Lyttelton market stall. Lyttelton is the only farmers market that the bakery sells bread through. The remainder of the business is focused on the café in Victoria Street, the bakery in Ferrymead and its wholesale business to restaurants.

For Graham, Vic's Bread been quite a journey. It all began back in 1999. He was managing a kitchen in Merrivale and started to experiment with different breads. Friend Philip Nord gave him a recipe for focaccia and then another friend tracked down a recipe for ciabatta from Vogue Magazine. He was hooked on these specialty European breads and started selling them to others. With the business growing it led to employment of specialty baker Paul Millar and the rest is history. To this day Paul is still the head specialty baker at Vic's. Their product is consistent and very high quality and over the years has won many awards. Favourites include focaccia's, sour dough, bagels, ciabatta, bagette's and the list goes on.

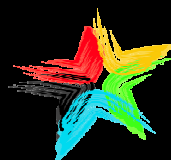
Whilst Graham is semi retired now he still has a close connection to Lyttelton and the market. He says what he really loves about the market is "working directly with the public, getting their direct feedback and really getting to know our customers".

If you haven't discovered Vic's bread yet you'll find their great product range at the Lyttelton Farmers Market each week. But get in early to avoid disappointment.

Article and Image: Lyttelton Harbour Information Centre

**Lynnette Baird** Licensed Real Estate Agent  
P: 03 328 7707 M: 021 224 6637

E: [lynnette@realhomes.co.nz](mailto:lynnette@realhomes.co.nz)  
W: [www.realhomes.co.nz](http://www.realhomes.co.nz)



# Professionals

Kennard Real Estate Limited MREINZ  
[www.kre.co.nz](http://www.kre.co.nz)

# about the lyttelton harbour review

Lyttelton Harbour Review is a community newsletter initiative developed by local Professionals real estate agent Lynnette Baird and Lyttelton Harbour Information Centre chairperson Wendy Everingham. The objective of the Lyttelton Harbour Review is to help keep local residents informed with what is going on in the wider Lyttelton Harbour community. Each week readers can read about community groups; businesses; events; and everything in between. If you have an event, topic, cause, or other, that you would like to share with the harbour community, then we would love to hear from you. Be heard, be seen, be informed - read it or offer it here.



## Lyttelton Arts Market

Every Saturday 9.00am to 1.00pm

If you haven't been down to the Lyttelton Arts Market, held every Saturday morning from 9.00am, on the corner of Oxford Street and Sumner Road, here is just a selection of artworks on sale. Local artists producing great works of art.

Event organisers are still keen to hear from new exhibitors: [lytteltonartsmarket@gmail.com](mailto:lytteltonartsmarket@gmail.com)

Article and Images:

Lyttelton Harbour Information Centre | Apologies in advance to the artists that names are not credited to the images



Unique local art  
on display at the  
Lyttelton Arts Market

Every Saturday  
9.00am to 1.00pm



Two local artists: →  
Stephen Estall and  
Missy Bennets





# subscribe to the lyttelton harbour review

The Lyttelton Harbour Review is published every Monday and can be delivered straight to your email inbox. Just send an email with the words "subscribe me" in the subject line, then sit back and wait for the next instalment of local news, events and reviews. If you do not have access to email, but would like read about our local events, Professional Real Estate print hard copies that are available from Thursdays at the Lyttelton Club; Samo Coffee, Fisherman's Wharf, Lyttelton Library and at the Lyttelton Harbour Information Centre on London Street. Or a copy can be delivered to your door, if you live in within the Lyttelton township: Contact Lynnette on 03 328 7707.

## Priority Facilities Rebuild Program

Update on Repairs of Council Facilities

At the end of September 2012 the Christchurch City Council agreed that thirty facilities across the City and Banks Peninsula should be prioritised for funding, further investigation and where possible repairs.

The list of 30 'significant projects' includes a range of facilities across Christchurch and Banks Peninsula that are currently closed. Some were closed following the earthquakes while the Council has closed others after receiving Detailed Engineering Evaluation assessments which shows they are below 34 percent of the New Building Standard.

These facilities were selected based on a criteria that considered a number of factors, including the impact the building's closure is having on the community. Repairs have now begun on some of these facilities while investigations are continuing on others.

Last week the Lyttelton Harbour Review was delighted to announce the reopening of the Lyttelton Harbour Information Centre on Oxford Street, which was one of the thirty priority buildings. This week we take a look through the Council web site to see how some of Lyttelton's other priority buildings are progressing:



### Lyttelton Service Centre

DEE: 10% of new building standards

The loss adjuster completing a damage assessment and Structural Engineer has predicted that the building will be uneconomical to repair. No further action being taken by council until the loss adjuster has confirmed position. Council has received a draft strengthening report including high level costing. As a fall back option, Christchurch City Council could choose to carry out the remaining works on the engineering report, scoping and costing the works required to bring the building to 34% of code. Awaiting revision incorporating requested changes. Review strengthening report on receipt.



### Norman Kirk Memorial Pool

DEE: L4 Received

Prediction from the engineer is that significant damage has occurred to the structure and possibly foundations of the buildings on site. Level survey completed showing significant bulging of the retaining walls along the site. Geotechnical investigation is now clearly warranted under the insurance policy. Damage assessment process has commenced, 6-8 week programme to completion. Process will inform the insurance claim entitlement, and cost to repair the site.



### Lyttelton Recreation Centre and Trinity Hall

DEE: L4 Received

Geotechnical position clarified, foundations are at 33% new building standards, no increase in this strength being possible without further strengthening - ground improvements like piling. A level survey undertaken to determine if there are global slippage issues. Level survey completed, showing that building has moved south, and there is up to 5.2mm/m of lean on the highest, southern most part of the building. Damage assessment and repair strategy process has commenced with six to eight weeks to complete. Process will inform the insurance claim entitlement, cost to repair the site. Knowledge generated from the proposed further engineering and costing work is vital for the council's long-term understanding of the site.

# contact the lyttelton harbour review

The team at the Lyttelton Harbour Review would love to spread the word about your community group, fundraising efforts, local heroes, business promotions, events and anything else that the local community would like to share. Phone, Email, or Post: Lyttelton Harbour Review, PO Box 94, Lyttelton 8841. **Deadline for any content: Thursday before Monday publication date.**

Lynnette Baird

03 328 7707

021 224 6637

lynnette@realhomes.co.nz

Wendy Everingham

03 328 9093

021 047 6144

infocentre@lyttelton.net.nz

## Bums on Seats Wanted

Council Petitioned to Kick Start Town Centre Plan Review



# WE GOT YOUR SIGNATURES,

## NOW WE NEED YOUR BUMS.

Occupy a seat in the council chambers this

# THURSDAY

# 18 April

# 9.30am

(Deputation to begin around 10.20)

**Council Chambers**

**53 Hereford Street**

Kris Herbert, local resident behind the petition to Council to kick start the review of the Town Centre Plan, will be presenting signatures and comments to the Christchurch City Council this Thursday. Kris will be asking the Christchurch City Council to update the town centre plan immediately.

The Lyttelton Harbour Business Association asked the council to do this a year ago, but the Council didn't listen. To be heard properly, this time Kris asking for people to come down to council chambers and show support by simply being there.

The meeting is a public forum that starts at 9.30am and Kris' deputation will probably start around 10.20am. Kris will have about ten minutes to present her petition to the Council.

Council Chambers  
Hereford Street

Thursday 18 April.

Wear your Lyttelton t-shirts, bring a sign, or just your presence will help send a message to the council that the people of Lyttelton want to get on with the rebuild. We want our say! We want the Town Centre Plan updated!

# plenty to share

In Lyttelton so many residents grow vegetables; or have fruit trees literally dripping with produce. Plenty to Share is about sharing any excess produce with the community. So if your lemon tree is yellow with goodness and you can't keep up with making lemon curd, bring those surplus fruits down to the organisers, where every Saturday the swapping of produce is well underway in Lyttelton on the corner of London and Canterbury Street; and also in Diamond Harbour on a Saturday morning at the village centre. If there is something on the Plenty to Share table that you would like to take home, then you are warmly invited to do so.

## Lyttelton's Civic Square

Creating a Civic Square for Lyttelton - Together

**Update: Community Meeting will now be held on Wednesday 17 April**

Drop-in sessions were held in Lyttelton during March 2013. This was the first step in the process to find out what people want to see and do in the square. The next step is a community meeting, hosted by the Lyttelton Mt Herbert Community Board, on 17 April 2013. The Lyttelton community is invited to take part in discussions on the feedback shared at the drop-in sessions and in submission forms.

### Community Meeting

Wednesday 17 April 2013      From 7.00pm-9.00pm      Former Supermarket, 17 London Street, Lyttelton

### Come Along

- Hear what the community feedback told us in March
- Talk about the look and feel of the square
- Discuss the kinds of materials that could be used
- Consider the location of the various elements

### For Further Information

Email      [LytteltonCivicSquare@ccc.govt.nz](mailto:LytteltonCivicSquare@ccc.govt.nz)  
Phone      Jennie Hamilton      03 941 5207  
             Philippa Upton      03 941 8808

Article: Christchurch City Council - Communications Service Manager, Sarah Kelly

## London Street Working Bee

Held Clean Up the Main Street

On Thursday April 18 a small team of people are getting together between 10.00am and 1.00pm to have a rubbish clean up on the vacant sections in London Street. Starting at the vacant site next to the Porthole Bar they will work their way to Oxford Street. Wi Peepe would love some more helpers. If you are interested please turn at up 10.00am, alternatively if you want more information please give him a call 328 7503. Please also bring your own gloves and any tools you think you might need.



## Tin Palace Art Exhibition

Bloom by Carol Harnett

Dates:      Saturday 20 April      10.00am to 2.00pm  
             Sunday 21 April      10.00am to 2.00pm

Christchurch based painter Coral Harnett's work explores the beauty of transformation in the natural world. She depicts Sakura [Cherry Tree] in various stages of bloom using oil on canvas in the tradition of Impressionism.

"When flora is transforming, it flows seamlessly, cycling between full bloom and germination. I am in awe of this process, witnessing an unseen perfect harmony."

Please join us to celebrate the work of Coral Harnett.

# lyttelton live music scene

Lyttelton is host to some great live music: Tuesday 7.30pm Open Mic Night at Wunderbar; Wednesday 8.00pm Marlon Williams Live at Port Hole Bar; Thursday 7.30pm Live Music at Porthole Bar; Saturday 10.00am local musicians at the Lyttelton Farmers Market; Sunday 3.00pm Courtney Carmel at Freemans; and the list goes on. So don't say home! Head on out and celebrate all that is Lyttelton Live.

## Naval Point: May Music Month

New Zealand Music Month

Naval Point Club are on the countdown to New Zealand Music Month 2013, and starting Music Month early:

- |                   |        |  |
|-------------------|--------|--|
| Thursday 18 April | 6.30pm | La Petite Manouche [Gypsy Jazz] CD launch \$20 pre sale or \$25 door sales |
| Friday 19 April   | 8.00pm | Live vinyl recording session [check out the poster later in this edition]  |



## Tommy Changs: Tape Wolf

R18 Early Show Starts 8pm  
Wednesday 17 April \$10 Entry

The Stink Magnetic Record Co Presents:

Half Tape, Half Man, Half Werewolf 150% Haunted Surf Attacks Port Town with Sonic Tape Trash Fuzz bass Voodoo Drums under Haunted Guitar. Supported by the Christchurch King of Comebacks Bad Evil and the Prince of Addington, The Invisible Hand.

48 London Street, Lyttelton

## Wunderbar Gig Guide

This Week at the Wunderbar

- |              |        |   |
|--------------|--------|---|
| Tuesday 16   | 7.30pm | Artist Showcase and Open Mic Night  |
| Wednesday 17 | 7.30pm | Song FWAA: New Zealand Tour - Melodies, sometimes pretty, sometimes catchy, and occasionally abstract and angular, collide with improvisations chattering and emoting, propelling the listener on an exciting express. Entry \$10 |
| Thursday 18  | 8.30pm | Project Amarna return for a night of instrumental progressive metal with support from Dependency Theory. Come out and support two up and coming local bands. Entry Free   |
| Saturday 20  | 9.00pm | Permanence have been performing Joy Division songs for five years now, and would love you to share this journey of music, love and loss. Entry \$5  |



## combined church service

Since the deconstruction of Lyttelton's historic churches you may not have heard that Lyttelton hosts a combined church service every Sunday morning at 10.00am at the Union Church in Winchester Street, Lyttelton. All residents welcomed.

### Sunday 10am : Union Church, Winchester Street

## 2013 Commemorative Anzac Day Service

At 9.45am Returned Servicemen and Women are invited to assemble at the corner of London Street and Dublin Street to march to the corner of London Street and Canterbury Street where a service will be held at 10.15am.

## Food Foraging Tours

Kia Ora, the Harbour Resilience project is organising two Foraging Tours in the coming weeks. One will take us on an exploratory cycling tour of edible landscapes in south Christchurch on 27 April; and the other one on a Harbour wide edible trip on 5 May. If you are interested in coming along send me an email and I'll pass on more information (invite attached). Spaces are limited so be quick to get in.

We are also wondering whether there are any orchards or gardens around the Harbour that produce more than enough for the owners with excess produce that could be picked and shared with the community? There are several avenues through which this excess produce could reach and delight people in your community, for example Plenty to Share, Grow a Little Extra, Foraging tours, etc. If this sounds like you, we would love to hear from people in such situations. Please get back to us if you or anyone you know might be interested in produce sharing possibilities.

Nina Sort, Project Lyttelton Harbour Resilience Project: [nina@lyttelton.net.nz](mailto:nina@lyttelton.net.nz)

## WILD FOOD

## FORAGING TOURS



Join us for

URBAN FORAGE CYCLE TOUR on 27 April (pm)

Or WHAKAROUPU FORAGE TRIP on 5 May (pm)



EXPLORE, TASTE AND CELEBRATE THE ABUNDANCE.

Chief forager: Darren Tatom

More info & registrations: [nina@lyttelton.net.nz](mailto:nina@lyttelton.net.nz)



# c'mon get involved

Lyttelton is known for its culture of volunteer activity and community participation. If you have ever had the thought that you would like to be more involved in the local community, but you are not sure where to go, or who to talk to? Start by having a conversation with the team at the Lyttelton Harbour Information Centre, as they can give you some advice on the many types of great volunteer organisations here in Lyttelton. If you are passionate about elderly care, sustainability, youth culture, harbour activities, heritage, radio, business development, fundraising, or just about anything - then there is a group who would love for you to be involved!



## Fundraising Quiz Night

The Lions Club of Lyttelton challenges you to a quiz night

When: Sunday 28 April, 7.00pm  
Where: Valley Inn, Heathcote Valley  
Cost: \$10.00 per ticket

How to book:

Tables of 4 or 6 may be booked with Mary Jamieson 328 8523 or email [mjam@xtra.co.nz](mailto:mjam@xtra.co.nz)

Do come along for a fun night and take part in the battle of brains against cunning! Proceeds to be used to support your local community.

Article: Lyttelton Lions Club,  
Image: Lions New Zealand

## Lyttelton Main School Board of Trustees Election

Nominations are invited for the election of six parent representatives to the board of trustees. A nomination form and a notice calling for nominations will be posted to all eligible voters. Additional nomination forms can be obtained from the school office.

Nominations close at noon on May 16 2013 and may be accompanied by a signed candidate's statement. The voting roll is open for inspection at the school and can be viewed during normal school hours. There will also be a list of candidates' names, as they come to hand, for inspection at the school.

Voting closes at noon on 30 May 2013.

Article: Lyn Carson, Returning Officer

## Project Lyttelton Recruits

Passionate about Lyttelton? Passionate about building community?

Project Lyttelton is seeking maternity cover for two roles and has a new and exciting position to fill:

### General Manager

20hrs per week – Maternity cover six month fixed term contract. Seeking an experienced leader, to manage employees and contractors, further the organisations vision and support the organisation to reach its goals with great organisational and communication skills.

### Farmers Market Development Manager

10hrs per week – Maternity cover 12 month fixed term contract. Manage staff, build relationships with a variety of stake holders, manage all aspects of marketing, communications and events for our weekly farmers market.

### Garage Sale Co-ordinator

8hrs per week – 12 month fixed term initial contract. Help us take the garage sales to the next level! This successful project facilitates fundraising for a huge variety of local initiatives. We need a retail and volunteer management whizz to help us develop, grow and fulfil the potential.

If you would like further information on one or more of these posts, contact: [office@lyttelton.net.nz](mailto:office@lyttelton.net.nz) or call us on 03 328 9243 for full job descriptions. Applications to include CV and covering letter sent to the above email address or posted to: Project Lyttelton, Po Box 74, Lyttelton 8841. Be sure to indicate which position or positions you are applying for. Closing date for all three positions: Monday 22<sup>nd</sup> April 5pm. Applications received after this date and time will not be considered.

# diamond harbour writers group

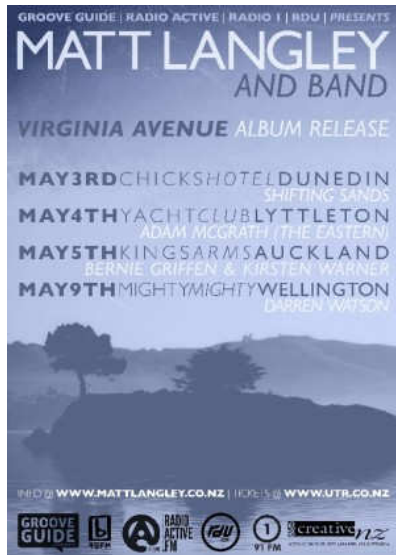
The Diamond Harbour Writers Group are an informal group that encourages members to develop their skills in writing prose and verse. New members are welcome, and you can be from anywhere in the Harbour region to join. Meetings are held the third Wednesday of the month, in the afternoon, at a private home. They also have a blog site: [diamondharbourwriters.blogspot.co.nz](http://diamondharbourwriters.blogspot.co.nz) which includes more their great work, and much more information about them. For more details please contact John Riminton 03 329 4329 to enquire further.

## Quail Island Ferry: Autumn Hours

Trips to Quail island are now only on weekends departing at 10.20am and returning 3.30pm until the end of April.

## St Joseph Worker Catholic Church

21 Exeter Street | Sunday 14th April at 5.30 pm



## Matt Langley Announces New Album + Tour

Naval Point Club: Saturday 4 May 2013 | Tickets \$15

Dunedin based singer-songwriter Matt Langley has announced the release of new album Virginia Avenue this May. Following up his acclaimed 2010 debut release Featherbones, the new album features an all star cast of local musicians including Riki Gooch (Trinity Roots, Eru Dangerspiel), Tom Callwood (The Phoenix Foundation) and Tom Watson (Cassette, Fly My Pretties).

To celebrate the release, Langley is heading out on a nationwide tour during May - here are the details followed by the current single from the album:

**Saturday 4th May, Naval Point Yacht Club, Lyttelton w/ Adam McGrath (The Eastern)**

Virginia Avenue is named after the street in Broad Bay on the Otago Peninsula where Matt lives and wrote the album. Produced by renowned pairing Brett Stanton (The Phoenix Foundation) and Riki Gooch (Trinity Roots, Eru Dangerspiel), the album also features some of New Zealand's finest musicians including Gooch on drums, Tom Callwood (Phoenix Foundation) on Bass and Thomas Watson (Cassette, Fly My Pretties) on guitars.

The album follows Langley's critically acclaimed 2010 debut Featherbones which included APRA Award winning song '7.13'. The NZ Herald said that Featherbones was "as fine a singer-songwriter debut album as you could expect" and the Sunday Star Times marvelled that "it is one of life's simple pleasures to hear a voice like this". Matt has spent the last two years touring New Zealand consistently with The Eastern, Darren Watson, Mel Parsons and Australian Jordie Lane, building a formidable following nationwide.

Langley took his time writing Virginia Avenue, drawing from a batch of over 50 album ready songs. While Featherbones was a genuine minimal masterpiece, Virginia Avenue is heavier, darker and dripping with quality. Themed as an actual album in form Virginia Avenue is comprised of two distinct sides complete with an instrumental 'intermission', it features fifteen songs that embrace the listener. Heartbreak and dark humour are embodied here... 'life is a bad joke...and then you die.' and Langley's not afraid to push his lyrical honesty into places that we all know, places that cut '...Your love is dirt, the blood under my nails, the way I cling to it.'

The core band of Gooch, Callwood and Watson free up wide open spaces on tear-my-heart-out tracks like 'Sad Sound Good', 'Ghost Wanted' and 'So It Seems' as well as unleashing fearsome noise on the apocalyptic 'Unto the Ends of this Earth' before delivering the live acoustic heart ache and warm harmonies of 'Bitter End'.

Virginia Avenue is distributed by Rhythmethod and was made with the generous assistance of Creative New Zealand.

Tickets available from:

[www.undertheradar.co.nz/ticket/2677/Matt-Langley-Virginia-Avenue-Album-Release-Tour](http://www.undertheradar.co.nz/ticket/2677/Matt-Langley-Virginia-Avenue-Album-Release-Tour)



## suburban papers available

Do you know that each week at the Lyttelton Information Centre you can collect most of your local newspapers? We get weekly editions of the Lyttelton Review and Coastal Mail, plus fortnightly issues of the Bay Harbour News, and the Akaroa Mail. We also have local events advertised in our windows plus many brochures for events happening in the greater area.

## LIFT Library Film Evening

Monday Evenings at The Portal, 54a Oxford Street: 7.15pm

The Portal is booked throughout April for Monday evening films, but I am wondering whether to continue in May? Last week only two people (regular, loyal audience members) joined me for the evening – even though the Portal was very warm, thanks to whoever put the heat pump on for us [possibly the lovely Sue-Ellen]. Of course you can find plenty of films out there, especially on-line but I think the value of film evenings is that we can exchange reactions and ideas on these topics, and even get active on some of them.

LIFT has now provided 36 film evenings. Do you want more? I really need some feedback on whether/how to continue. I shall need to make further bookings for the Portal soon, if continuing, before other evening events start up.

What: LIFT Library Film Evening | Every Monday Evening | Koha welcomed

Where: The Portal, 54a Oxford Street [behind the swimming pool]

Time: 7.15pm film begins

Organiser: Juliet 03 328 8139 or 021 899 404

## LIFT Library

I'm sure we are all welcoming the occasional rain, though maybe we would prefer it to happen at night so we can enjoy the outdoors in daytime – like catching up with the fast-growing weeds in our gardens! Rainy times make good reading times, though.

No new books have come to hand, but one described last week, Spontaneous healing; how to discover and enhance your body's natural ability to maintain and heal itself, by Andrew Weil MD, is doing the rounds. I've finished it, two LIFT members have put their names on the waiting list.

And today's quote comes from a book that has been in LIFT from the beginning, but which I've only just got round to reading, on the recommendation of a LIFT member: Lynne Twist's "The Soul of Money". It's great! If you find books on economic systems off-putting, read this one instead. I'm planning to show a talk by her at a film evening soon.

"What you appreciate, appreciates."

Juliet at LIFT

L=Living Economies, I=Inspiration, F=Facts, T=Transition

Phone 03 328 8139 or 021 899 404

Facebook: [www.facebook.com/pages/LIFT-Library/334943396599142?ref=hl](https://www.facebook.com/pages/LIFT-Library/334943396599142?ref=hl)

Reviews: [www.lyttelton.net.nz/grow-local/library](http://www.lyttelton.net.nz/grow-local/library)

## Home to Rent

Do you need a place to stay while your house is getting fixed? Our house will be available from 1st May until 20th July. It is a three bedroom house with heat pump and fully double glazed. It has a flat entrance and a large slightly sloping garden with sandpit, swing and vegetable garden for you to use. It will be fully furnished so you don't need to bring a lot of stuff. Our lovely cat will keep you entertained because he can't come with us. So no pets and non smokers please. The weekly rent will be negotiable. Don't hesitate! Give me a call. Andrea 03 328 9346

## Short Term Rental

Available from the end of April for ten weeks. A fully furnished home. No pets, no smokers. 3 bedroom home. Call 021 0712901. [Editor: sorry folks no name, location or weekly rental details provided with the message.]

# lyttelton market town

Saturday mornings are never dull in Lyttelton! Enjoy the local markets including the Lyttelton Farmers Market for fresh produce, meat, fish, eggs, honey and yummy baked goods. Check out the new Lyttelton Art Market on the corner of London and Sumner Road. Head up to the Grassy Art and Craft Market for bargain items or unique art items. And be sure to check out the Community Fundraising Garage Sale located up the driveway behind the swimming pool.

## Available For Rent

Available for rent from May 4 until July 26, three bedroom house, fully furnished. Warm and sunny, situated on the east side of Lyttelton. The house is well insulated with a heat pump and wood burner. Would suit couple or family with up to two children wanting accommodation while their house is being repaired. Non smokers and no pets. Rent negotiable. Phone Shona 328 8633 or text 027 338 5560.

## Roots Restaurant Meal Exchange

We love fresh produce, and even more so when it is from Lyttelton! We would like to put the word out of our plan to get more local produce rolling in, and in exchange get a meal voucher from Roots Restaurant. Simple as that, come and talk to us and let us know what's in excess in your backyard. If you are willing to share it with us, we can offer you in return a meal voucher valued on an mutually agreed value. So we will enjoy food from your garden, and you will enjoy our food from our kitchen.

## Sing A New Song

Starting in Diamond Harbort, a workshop with Wellington choir leader, Carol Shortis.

Where: Diamond Harbour Community Hall, Lower Waipapa Avenue, Diamond Harbour

When: Saturday May 4 9.30am to 4.00pm

Carol will teach a range of new songs, from easy to more challenging, from a variety of musical traditions. Expect some beautiful Celtic songs. Singers of all ages and levels of experience welcome. \$50 waged; \$40 unwaged/low income. Includes lunch and other refreshments. Registration essential. Please email [diamondharboursingers@gmail.com](mailto:diamondharboursingers@gmail.com) or phone 03 329 4588.

More information at <http://diamondharboursingers.blogspot.co.nz/>

## Meditation and Buddhism

New Classes in Lyttelton

Weekly classes on Wednesdays 7.30pm to 9.00 pm, starting Wednesday 17 April. Relax with a simple breathing meditation followed by a talk on Buddhist wisdom and a guided meditation based on the teaching. Classes are suitable for everyone. Join in any week, booking is not required. \$10 per class held at Project Lyttelton, 54a Oxford Street, Lyttelton with Buddhist nun Kelsang Luma.

## Kath Bee and Bands 2013 Grandparents Rock SI Tour

Lyttelton Main School Hall | 24 April, 10.30am

Kath Bee is a well-known composer on The Learning Media Ltd's Kiwi Kidsongs CDs. Her songs 'Individuality', 'Dad I wanna be a Camel', 'Seasons' and 'Save the Planet' are some of the most popular songs, sung regularly in schools around the country. With her clear Kiwi voice and down-to-earth manner, she effortlessly gets the message across. Described as 'a refreshing change', Kath's songs have catchy lyrics and melodies that will have you singing along in no time. Good kids' music is hard to find, but Kath has nailed it! More details visit [www.songs4kids.co.nz](http://www.songs4kids.co.nz)

## Laugh Out Loud

A fact of life: After Monday and Tuesday even the calendar says W T F ...



# GROW

*a little*

*Extra*

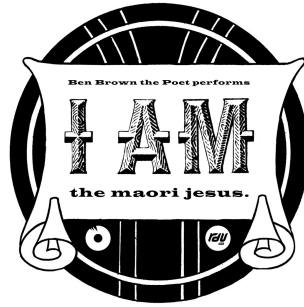
**for Community House**

Did you know Community House  
delivers 5 home-cooked meals a week  
to elderly residents of Lyttelton?  
Could you please help by contributing  
extra from your garden?

Produce delivery coordinated through the  
Community Garden, contact Sue-Ellen on 328 9243







In Real Life Vinyl Mastering in Association with RDU98.5FM presents:

## **VINYL RECORDING – LIVE IN FRONT OF STUDIO AUDIENCE**

**I AM: The Maori Jesus performed by Ben Brown the Poet**

**19TH APRIL - LYTTELTON YACHT CLUB - 8PM**

Tickets From <http://www.dashtickets.co.nz/event/st91dc360>

In response to James K. Baxters infamous poem '**The Maori Jesus**', Ben Brown paints his epiphany as a street walking native, pushing back the veneer of wellbeing to reveal a discomforting real world picture of self abuse, religious contempt and anger. A powerful pictorial from a contemporary Maori, on how he views himself and his surroundings.

**Recorded Live in front of a studio audience, this revelatory piece of poetry will become immortalized in wax in a one-off performance at The Naval Point Yacht Club on the 19<sup>th</sup> of April, 2013.**

The finished record will be framed and packaged with motifs and images influenced from the poem, hand produced by James Meharry, from In Real Life vinyl Mastering. Attendees will be notified about limited copies made for purchase thereafter.

**IN REAL LIFE** is a Lyttelton Harbour based vinyl record mastering studio run by **James Meharry**. Specialising in short runs and high quality production. James will be setting up the venue to record and cut **LIVE, DIRECT TO VINYL** on a T560 Vinyl Recorder.

**BEN BROWN** is a Lyttelton based writer, poet and performer. His poems have been published in various journals including Landfall and Catalyst and since 1992 he has published around twenty children's books, as well as a number of short stories for children and adults.

**AARON TOKONA** joins Ben and James as **DARK SIDE OF THE HOON OFF** to add an essential backdrop of guitar laden, dub and reverb - bringing atmosphere and ambiance to this special one-off recording. Ben will preface this recording with a special performance to warm the ears - joining him **RANG from ASIAN TANG**.

**For more information please email: [james@inreallife.co.nz](mailto:james@inreallife.co.nz)**

# Lyttelton's Civic Square

## Creating a civic square for Lyttelton together



### What:

Community meeting

### When:

Wednesday 17 April 2013  
from 7pm–9pm

### Where:

Former supermarket site,  
17 London Street

### For further information:

- email  
[LytteltonCivicSquare@ccc.govt.nz](mailto:LytteltonCivicSquare@ccc.govt.nz)
- phone  
Jennie Hamilton on 941 5207 or  
Philippa Upton on 941 8808.

**During development of the Lyttelton Master Plan, the Lyttelton community asked for a new civic square.\***

Many of you attended the drop-in sessions in March 2013 to confirm what the community wants to see and do in the square.

## Now we need your help again

*Together we need to start developing options at a meeting hosted by the Lyttelton/Mt Herbert Community Board.*

Come along and:

- Hear what the community told us in March
- Talk about the look and feel of the square
- Discuss the kinds of materials that could be used
- Consider the location of the various elements



\* The site, formerly occupied by Ground Café, the Albion Hotel and the Borough Council Offices, has been purchased by the Christchurch City Council for this purpose.

# Port Hills Geotech



9 April 2013

## **Port Hills Geotech Group - Summit Road**

### **ROCK SCALING 15 APRIL – 03 MAY 2013**

Deconstruction of unstable rock outcrops will be carried out above Summit Road, below the Gondola Top Station, from Mon-Fri within these dates.

You may hear the sound of explosives and drilling during this time.

Please note that Summit Road and the Bridle Path Track are currently closed and will remain closed to members of the public and unauthorised personnel during this time. Due to the multiple hazards that are present on this site, we may have some “exclusion zones” around the individual work sites.

Any further questions for Council officers can be directed to:

[porthillsgeotech@ccc.govt.nz](mailto:porthillsgeotech@ccc.govt.nz)

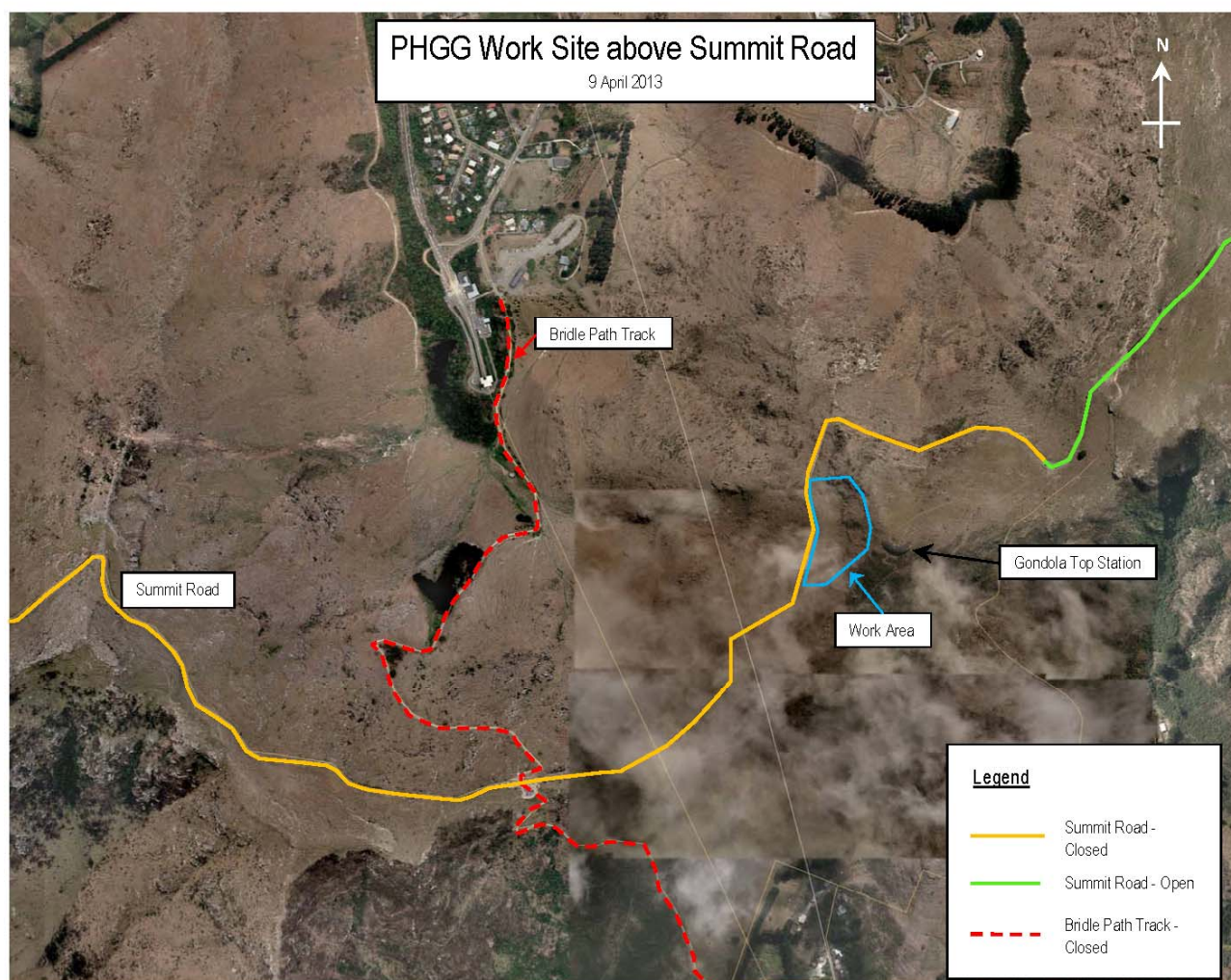
We look forward to your support through this part of the earthquake remediation works.

Any queries, please contact Martin Freeman – Site Supervisor on 021 270 6737 or email [martin@solutions2.co.nz](mailto:martin@solutions2.co.nz)

Regards

Martin Freeman







## Community Organisation Grants Scheme



The Community Organisation Grants Scheme (COGS) is a community-driven government-funded scheme an example of the community and government working together to build strong, sustainable communities, and to provide strong social services.

# PUBLIC MEETING

### LOCAL DISTRIBUTION COMMITTEE (LDC)

Last year, 36 COGS committees throughout New Zealand, served entirely by volunteers, allocated \$12.5 million (GST exclusive) to more than 4,000 community organisations.

## The Christchurch City/ Banks Peninsula COGS LDC is holding a public meeting on:

Wednesday 17 April 2013

10 am – 12 noon

Canterbury Horticultural Hall, South Hagley Park, 57 Riccarton Ave, Christchurch

**Representatives of community organisations are invited to meet the people who make funding decisions at the local COGS public meeting.**

At the meeting you can:

- have a say about your community funding needs and priorities
- hear a report from the outgoing LDC on the 2012/13 funding decisions
- find out more about COGS funding and how to account on time.

For further information contact:

- Liz Stephenson, Community Advisor
- Phone 0800 824 824

**For more information - phone 0800 824 824**  
**email: [GrantsOnline@dia.govt.nz](mailto:GrantsOnline@dia.govt.nz)**  
**or visit [www.communitymatters.govt.nz](http://www.communitymatters.govt.nz)**

COGS is administered by the Department of  
Internal Affairs

**INTERNAL AFFAIRS**



Te Tari Taiwhenua

# “c'mon get involved”

April 2013

## Lyttelton Harbour

### Community Garage Sale

All donations of good used, or new, household items greatly accepted at Project Lyttelton 54a Oxford Street. Please do not donate items that cannot be sold, as this increases our costs trying to take unwanted items to the charity barn, or worse still the rubbish depot.

### Governors Bay Pre-School Music

Preschool music classes run on Thursday mornings during school term, 9:15 - 10am in the Governors Bay School library. Come and join us for singing, dancing and musical games. Cost \$3.50. All under 5s welcome, please bring a grown-up with you. Contact Mel Dixon 3299 908

### Lyttelton Community Association

New members welcome. As an issues based organisation, we do not hold regular meetings. If you would like to be advised of when the next meeting will be held, or have an issue to discuss, please email us at [LCAsn@vodafone.co.nz](mailto:LCAsn@vodafone.co.nz) or phone Ken Maynard 03 328 9553.

### Lyttelton Community House

Meals for the elderly continue to be prepared and delivered daily. If you know of any elderly residents who need this service, or would like to volunteer to assist, please contact Christine or Courtenay 03 741 1427.

### Lyttelton Harbour Basin COMMUNITY Civil Defence

New members welcome. Meets every third Wednesday of the month 7.00pm - 9.00pm at Lyttelton Main School. To become involved contact the Area Co-ordinator Julie Lee on 03 328 7779 or 027 739 1832.

### Lyttelton Harbour Business Association

For more details visit: [www.lytteltonharbour.co.nz](http://www.lytteltonharbour.co.nz)

### Lyttelton Harbour Information Centre

Monday to Saturday 10.00am to 4.00pm; Sunday 11.00am - 3.00pm.

### Lyttelton Harbour/Whakaraupo Issues Group

Focus is to improve the natural environment and habitat of the harbour and harbour basin. Meetings are every second month. All welcome. Contact Claire Findlay (Chair) 03 328 8930, Melanie Dixon (Support) 03 329 9908 or visit [www.ecan.govt.nz/lhwig](http://www.ecan.govt.nz/lhwig)

### Lyttelton Lions

Meet on the 2nd Tuesday of each month at Community House at 7.30pm. Anyone interested in becoming involved, or anyone who would like to learn more about this organisation, is most welcome. Contact Mary Jamieson 03 328 8523 or Dave Evans 03 379 6675.

### Lyttelton Historical Museum Society

Lyttelton Museum committee is developing a concept plan for the re-building of Lyttelton Museum. Meetings held once a month. New members, donations or any other support is welcomed. Lyttelton Museum, PO Box 95, Lyttelton. 328 8972 [lytteltonmuseum@xtra.co.nz](mailto:lytteltonmuseum@xtra.co.nz)

### Lyttelton Reserves Management Committee

Reserves Committee meets on a regular basis to make decisions about the management of the reserves. It organises weed control and planting programmes that include public and schools planting days. To be involved email the group at [reserves@lyttelton.net.nz](mailto:reserves@lyttelton.net.nz).

### Lyttelton Time Bank

Jen will be at the Lyttelton Harbour Information Centre every Tuesday and Thursday 9.00am to 11.00am. Phone: 021 806 406 or email the team at [timebank@lyttelton.net.nz](mailto:timebank@lyttelton.net.nz)

### Lyttelton Toy Library

Now at 25 Canterbury Street. Sessions every second Saturday 10.00am to 12noon. Range of 500+ toys for children aged 0-5 years. Toys large and small, ride-ons, puzzles, games and dress-ups to borrow. Join anytime \$42.00 per year. Toy Librarian: Kimberly 03 384 8400.

### Lyttelton Volunteer Fire Brigade

Meets for training and maintenance every Thursday night from 7.00pm at the temporary station in the Lyttelton Port Company admin building car park, 56 Norwich Quay. If you are interested in joining, then pop on in. Russ Barron, Brigade Secretary.

### Lyttelton Youth Centre

Youth Centre/Community House, 7 Dublin Street, Lyttelton. Contact Christine 03 741 1427 for further details.

### Plunket Playgroup

The Plunket Playgroup can be found at Lyttelton Main School, every Monday and Wednesday, 10.00am to 12noon. 50 cents donation and everyone is welcome. Contact Jodi Rees 328 9246 and Andrea Solzer 328 9346 [note the phone numbers are very similar].

### Project Lyttelton

The Portal, 54a Oxford Street, Lyttelton [located behind the Swimming Pool]. Office 03 328 9243.

### Volcano Radio

Currently - Off Air. Fundraising t-shirts available from Portico, 48 London Street.



# “business directory”

support our local businesses

April 2013

## Lyttelton

Abbraccia Bellydance	41 Voelas Road [West School]	03 328 8883	Paige 021 999 848
Acupuncture Therapy	18 Oxford Street	03 328 9053	Robin Kerr
Alexander Technique	Private Address	03 328 8968	Belinda Walker
Alterations and Ironing Service	Oxford Street	Private No.	Wendy De Backer 021 0288 1466
Bank of New Zealand	56 London Street	0800 80 04 68	Trish, Kelly, Donna
Banks Peninsula Accounting	PO Box 83, Lyttelton	03 328 7231	Chris 021 280 0086
Beauty by Carly	Private Address	Private No.	Carly 021 294 5676
Bells Pharmacy	50 London Street	03 328 8314	
Body Kinetics - Gym   Fitness	Oxford Street	03 328 7002	Jen 027 204 1224
Christchurch Council Service Centre	15 London Street	03 941 8999	Debbie/Patricia
Christchurch Yoga	Private Address	03 328 8889	Rebecca 021 071 0336
Coastal Living / Picture Framers	34 London Street	03 328 7350	
Coffee Culture	18 London Street	03 328 7080	
Dandy Designs - Web Business Develop	Private Address	03 328 8646	dana@dandydesigns.co.nz
Diamond Harbour Ferry	B Jetty, Lyttelton Wharf	03 328 9078	
Dockside Apartments	22 Sumner Road	03 325 5707	Grant / Kathy
Everest Indian Restaurant	2 London Street	03 328 8185	Parminder Singh
Fishermans Wharf	39 Norwich Quay	03 328 7530	
Freemans Restaurant	47 London Street	03 328 7517	
Frog Web Works	14 Winchester Street	Private No.	Graeme 027 473 5018
Four Seas Restaurant	23 Dublin Street	03 328 8740	
Ground   Gourmet Foods, Catering	Lyttelton Farmers Market	022 476 8633	info@ground.co.nz
Harbour Co-Op	12 London Street	03 328 8544	
Hands on Health   Nutrition Massage	Private Address	Private No.	Rebecca 027 494 6349
Himalaya Design	20 London Street	03 328 7600	Open 7 Days 10am - 4pm
Home Based Child Care	Private Address	03 328 7217	Marcia 021 236 1682
Home Based Education	Private Address	03 328 9229	Jen Skjellerup
Irish Pub	17a London Street	03 328 8085	Ross, Janet, Roger and Sandy
Jack Tar Sailing	West Side, No.7 Wharf	03 389 9259	Mike Rossouw
Land Arch Landscape Architects	13 Exeter Street	03 328 8882	dan@landarch.co.nz
London Fish and Chips	34 London Street	03 328 8819	
London Street Books	48 London Street	03 328 8088	Thurs-Sun
London Street Dairy	34 London Street	03 328 7358	Open 7 Days
Leslies Bookshop	18 Oxford Street	03 328 8292	
Lyttel Beauty	32 Voelas Road	03 328 7093	www.lyttelbeauty.co.nz
Lyttelton Bakery	6 Norwich Quay	03 328 9004	
Lyttelton Builders Limited - Office and Yard	16 Canterbury Street	03 328 9305	Peter Tocker 021 862 537
Lyttelton Harbour Information Centre	65 London Street	03 328 9093	
Lyttelton Library	35 London Street	03 941 7923	
Lyttelton Health Centre	18 Oxford Street	03 328 7309	
Lyttelton Physiotherapy	18 Oxford Street	03 328 8111	
Lyttelton Recreation Centre	25 Winchester Street	03 941 5656	
Lyttelton Sea Foods	6 Norwich Quay	03 328 7628	
Lyttelton Service Station	1 Canterbury Street	03 328 8749	
Lyttelton Shuttle	Airport, Tours, Anywhere	Private No.	Linda 021 254 4986

# “business directory”

support our local businesses

April 2013

## Lyttelton [continued]

Lyttelton 'Top' Club	23 Dublin Street	03 328 8740	
Mac Todd Solicitors	50 London Street	03 328 9992	Ray Blake 021 43 66 50
Maids of Ink	31 London Street	03 328 9263	Basement Level
Min Sarginson Real Estate	53 London Street	03 328 7273	Min Sarginson 027 432 0327
Mondo Vino	42 Norwich Quay	03 328 7744	
Orbit Architecture	5 Norwich Quay	03 328 9294	Neil Aitken 021 155 5601
PedalOn Bicycle Service	2 Exeter Street	03 328 9246	021 055 6865
Port Electric : Computer Appliance Repair	Private Address	03 328 8099	Ken 021 117 6848
Port Hills Auto Centre	42a Norwich Quay	03 328 9980	
Porthole Bar	40 London Street	Private No.	Mike 021 328 977 [Tue-Sun]
Portico	48 London Street	03 328 8088	Tue-Sun 10am - 4pm
Port View Restaurant	23 Dublin Street	03 328 8740	Wed-Sun + Sat-Sun Brunch
Professionals Real Estate	36 London Street	03 328 7707	Lynnette Baird 021 224 6637
Project Lyttelton Office	54a Oxford Street	03 328 9243	Sue-Ellen
Pynenburg and Collins   Architects	PO Box 80, Lyttelton	Private No.	Simon 021 163 7193
Ray White Real Estate	47 London Street	03 331 6757	Marie   Daisy
Roots	8 London Street	03 328 7658	Christy   Guilio 021 120 8083
Rossouw Window Cleaning	Private Address	03 389 9259	Mike 0274 355 239
SAMO Coffee	3 Canterbury Street	Private No.	Open 7 Days
Sno Clothes and Milly May	8a London Street	03 328 8584	Heather
Special Branch NZ   Arborist	Hawkhurst Road	03 328 8303	Tim 022 091 9202
Storm Hairdressing	34 London Street	03 328 8859	Sally   Kat
Tailored Portraits   Photography	Cressy Terrace	03 328 7122	Gillian Taylor 021 047 4415
Thea Mickell Services Ltd   Fundraising	Private Address	03 384 7547	Thea 027 607 7282
The Mindful Body	Private Address	03 328 9923	Janet 027 368 6515
The Rookery	Ross Terrace	03 328 8038	Angus   Rene
Time to Resolve   Mediation Service	Private Address	03 328 8219	Chantal 022 618 8532
View Hairdressing	Private Address	Private No.	Megan 027 488 5173
Volcano Radio	Private Address	03 328 8566	
World Organics Skincare	Private Address	03 328 7446	Nicki 027 423 9455

## Diamond Harbour

Bronwen Jones- Writing and PR Services	Rawhiti Street	03 329 4303	<a href="http://www.bronwen-jones.com">www.bronwen-jones.com</a>
Chalfont Cafe   D.Harbour Country Store	2 Waipapa Avenue	03 329 4854	Open 7 Days till 5.30pm
Diamond Harbour Ferry	Waipapa Avenue	03 328 9078	
Diamond Harbour Medical Centre	2a Waipapa Avenue	03 329 4402	
Godley House Cafe	2e Waipapa Avenue	03 329 4880	<a href="http://www.godleyhouse.co.nz">www.godleyhouse.co.nz</a>
Orton Bradley Park	Marine Drive	03 329 4730	
Snowdrop Cottage Children's Store	Waipapa Avenue	03 329 4464	Open 7 Days 9.00am - 5.00pm
Shunyata Retreat   Day Spa	10 Rawhiti Street	03 329 4773	Contact Paru
Thrive: Chiropractic, Acupuncture, Nutrition	Private Address	03 329 3254	Mark and Lou Warren

## Governors Bay

At Home Childcare Limited	18 Bay Heights	03 329 9970	Neave Ross-Wallace
Governors Bay Hotel	52 Main Road	03 329 9433	
She Chocolat	79 Main Road	03 329 9825	
Living Springs	Bamfords Road	03 329 9788	

# “accommodation”

places to stay around the harbour

April 2013

## Lyttelton

- **Canterbury Street Apartment.** Fully renovated one bedroom apartment ideal for short term or holiday stay accommodation. Completely self contained with separate living space, kitchenette, bedroom and bathroom. Spread over two floors this furnished apartment will feel like a home away from home. Tariff from \$120 per night. Phone Gloria 03 328 7065 or mobile 022 073 0014.
- **Dockside Apartments.** Three private apartments enjoying harbour views and available for casual holiday or short term occupancy. Scenic and close to London Street, an ideal option for friends or family. Options range from studio; one bedroom or two bedroom apartment. Tariff from \$90 - \$120 per night. Phone Grant or Kathy 03 325 5707 or view more details online [www.dockside.co.nz](http://www.dockside.co.nz).
- **No.1 Apartment.** Warm two bedroom apartment with magnificent harbour views available for holiday or short term accommodation. Undercover parking. Tariff \$120 per night with minimum three night stay. Longer rates available on enquiry. Phone Linda 03 328 9128 or 021 254 4986.
- **Randolph Apartment.** Private two bedroom modern apartment with superb views across Lyttelton available for holiday or short term accommodation. Apartment features private spa, off street parking and all the mod-cons including WIFI. Tariff from \$120.00 per day, with minimum three night stay. Longer term rates available. Phone Heather 03 328 8585 or 03 328 8584.
- **The Rookery.** Built in 1866 The Rookery Bed and Breakfast is one of the oldest surviving local cottages, with wonderful panoramic views of the historic port town of Lyttelton. Three renovated rooms are available; one with ensuite facilities. Tariff from \$115 to \$160 per night. Phone Angus or Rene Macpherson on 03 328 8038 or view more details on line [www.therookery.co.nz](http://www.therookery.co.nz).

## Diamond Harbour

- **Bryneth's Cottage** located on Purau Avenue. Luxury room, queen bed and spa bath. cooked breakfast or brunch. Only available Friday to Monday \$200 per night. Phone 03 329 4728 or 021 315 609
- **Diamond Harbour Lodge** is the place to relax, enjoy and unwind. Harbour sea views, spacious rooms, TV/DVD, CD player, large selection of books, games, free wireless internet, fridge, microwave, under floor heating in bathroom, heated towel rail, linden leaves toiletries, towelling bath robes. Robyn and Pete Hedges 3 329 4005 or visit [www.diamondharbourlodge.co.nz](http://www.diamondharbourlodge.co.nz)
- **Manaaki Eco Farmstay Purau** offers self contained ensuite accommodation. One or two bedrooms with spacious fully equipped kitchen/living in a beautiful rural setting overlooking Purau Bay. Holiday (min 2 nights) or longer term rates available. Contact Wendy ph 329 3202 or view us online [www.ecofarmstaypurau.co.nz](http://www.ecofarmstaypurau.co.nz)
- **The Old Exchange Bed and Breakfast** right in the heart of the Village at 2 Waipapa Avenue. Two queen sized bedrooms with ensuite bathrooms, own private entrance, sea views and within walking distance of the Ferry. Contact Jill 03 329 4275 or mobile 027 482 6014.
- **Orton Bradley Park** offer self contained camper van sites for overnight stays. Services include 15 powered sites; treated drinking water; toilet blocks and dump site, with the golf club and tennis court next door. Fees start from \$15.00 per night for two persons, with additional adults at \$6.00 per night. Contact 03 329 4730.

## Governors Bay

- **Camellia Cottage Bed and Breakfast** is a self contained cottage in a lovely garden setting. Room \$110 per night double or \$75 per night for a single. Contact Faye, 30 Zephyr Terrace, Governors Bay 03 329 9119
- **Governors Bay Bed and Breakfast** offers a place to relax and rejuvenate on nine acres to bush side paradise beside the harbour. Furnished room with ensuite bathroom and separate sitting area also available for short term rent for those seeking emergency accommodation. For more details contact Eva on 03 329 9727, or view on line [www.gbbedandbreakfast.co.nz](http://www.gbbedandbreakfast.co.nz).
- **Governors Bay Hotel** restored to it's former glory and offers six guest rooms located on the first floor level. All rooms renovated with 32 inch flat screen televisions, queen size beds, free wifi, heaters and vanities. Four rooms with direct verandah access with views over the Lyttelton harbour. Contact 03 329 9433 or view more details on line: [www.governorsbayhotel.co.nz](http://www.governorsbayhotel.co.nz).
- **Governors Bay Studio** is an upmarket studio with ensuite, wifi, sky television, kitchenette. Located by the water and beach. Lovely garden setting. Bed and breakfast \$180 - \$200 per night. Preferable short stays 2-3 nights. Contact Rosie Belton 027 228 7019.
- **Living Springs** offer an array of accommodation options from fully service private rooms, studios, twin rooms, shared bunkrooms to outdoor camping. Also available are some powered caravan sites. All rooms are clean, comfortable and well maintained for your relaxation. Contact Living Springs on 03 329 9788 or view more details on line: [www.livingsprings.co.nz](http://www.livingsprings.co.nz).
- **Waitahuna** an 1850's Colonial Cottage fully restored and set in 4 1/2 acres of garden with waterfront access. Self catering accommodation in a lovely romantic setting. Breakfast supplies included in the tariff, fully equipped kitchen, double bedroom plus a modern sofa bed in the sitting room. Contact Gavin or Annabelle 03 329 9712 or 027 222 4604.



# “harbourvibe”

what's on around the harbour this week

April 2013

## 17 Wednesday

Plunket Play Group	10.00am	Lyttelton Main School	All Welcome. Andrea Solzer 328 9346
Community Garden	10.00am	The Portal, 54a Oxford Street	Shared lunch from 12.00pm
Lyttelton Community Meeting	7.00pm	Former Supermarket Building	Discussion on Civic Square Development
L.Harbour Combined Civil Defence	7.00pm	Lyttelton Main School	Contact Julie Lee 03 328 7779
Song FWAA: New Zealand Tour	7.30pm	Wunderbar, London Street	Entry \$10
Marlon Williams [The Unfaithful Ways]	8.00pm	Porthole Bar, London Street	Live on Wednesday nights   Free Event
Tape Wolf	8.00pm	Tommy Changs, London Street	Entry \$10 R18

## 18 Thursday

Governors Bay Pre-School Music	9.15am	Governors Bay School Library	All Under 5s Welcome with Adult   \$3.50
London Street Working Bee	10.00am	38 London Street	Meet section next to Porthole Bar
Lyttelton Mt Herbert Board Meeting	1.30pm	Lyttelton Service Centre	All Welcome. Open Public Meeting
La Petite Manouche	6.30pm	Naval Point Club	Gypsy Jazz CD Launch \$25 Door Sales
Lyttelton Volunteer Fire Brigade	7.00pm	Lyttelton Fire Station	Weekly Training   New Members Welcome
Governors Bay Volunteer Fire Brigade	7.00pm	Governors Bay Fire Station	Weekly Training   New Members Welcome
Contra Dance Night	7.30pm	Private Address, Cass Bay	Contact Bill 03 328 8985   \$5
Al Park Live Music Thursday	8.00pm	Porthole Bar, London Street	Live Music Thursday   Free
Project Amarna	8.30pm	Wunderbar, London Street	Free Event

## 19 Friday

Baby Time	10.30am	Lyttelton Library, London Street	Stories, Rhymes, Activities   Under 2yrs old
Live Vinyl Recording Session	8.00pm	Naval Point Club	Refer poster inside this Review

## 20 Saturday

Art Exhibition: Carol Harnett	10.00am	Tin Palace, Oxford Street	Exhibition open until 2pm
Lyttelton Art Market	10.00am	Cnr London and Oxford Street	Photography, Painting, Sketches and More
Lyttelton Farmers Market	10.00am	London Street, Lyttelton	Fresh produce; Live Music; Buskers and More
Lyttelton Garage Sale	10.00am	The Portal, 54a Oxford Street	Second Hand Bargains and More
Permanence	9.00pm	Wunderbar, London Street	Entry \$5

## 21 Sunday

Art Exhibition: Carol Harnett	10.00am	Tin Palace, Oxford Street	Exhibition open until 2pm
Combined Church Service	10.00am	Union Church, Winchester Street	All welcome
Sunday School, A Vinyl Appreciation	3.00pm	Tommy Chang's, Lyttelton	Every Sunday   Free
Live Jazz Sundays	3.00pm	Freemans, London Street	Carmel Courtney Live   Free
St Josephs Worker Catholic Church	5.30pm	21 Exeter Street, Lyttelton	All welcome

## 22 Monday

Plunket Play Group	10.00am	Lyttelton Main School	All Welcome. Andrea Solzer 328 9346
Lyttelton Garden Club	1.30pm	Union Parish, Winchester Street	Dot 332 3283 or Ann 328 8917
LIFT Library - Film Evening	7.15pm	The Portal, 54a Oxford Street	Weekly Film Evening

## 23 Tuesday

Story Time	10.00am	Lyttelton Library, London Street	Stories, Rhymes, Activities   2-4yr olds
Community House Shared Lunch	12.00pm	Comm.House, 7 Dublin Street	Make new friends
Lyttelton St John Youth Division	6.00pm	St John Ambulance Station	52 London St, Lyttelton
Artists Showcase Open Mic Night	7.30pm	Wunderbar, London Street	Sing, Play, Quote or Enter



**Lynnette Baird** | Licensed Real Estate Agent  
P: 03 328 7707 M: 021 224 6637  
E: [lynnette@realhomes.co.nz](mailto:lynnette@realhomes.co.nz)  
W: [www.realthomes.co.nz](http://www.realthomes.co.nz)



# Professionals

Kennard Real Estate Limited MREINZ  
[www.kre.co.nz](http://www.kre.co.nz)