

“lyttelton review”

lyttelton harbour community update

www.lytteltonharbour.info

19 November 2012

Pictures Paint A Thousand Words

And prevents the Editor from writing too much....

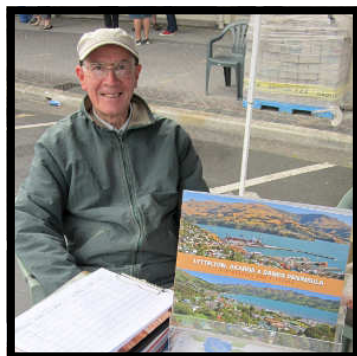
London Street came alive at the weekend with the sound of local music, market trading, buskers and more. Despite the weather clouding over, thousands of people couldn't wait to take to the street and enjoy the festive ambience that only Lyttelton can deliver. Saturday was Lyttelton like it used to be, and judging by the look on the faces amongst the crowd, no one wanted to be anywhere else. Market organisers wore grins from ear to ear, and rightly so, seeing all that hard work come to fruition was a magical moment for many. If you missed the fun last weekend, don't panic, because Lyttelton will be reliving this festive movement every Saturday from now on. There is no denying the future of Lyttelton looks very positive indeed.



Images: Kate Henry and Lyttelton Harbour Information Centre

Great Fundraisers for Lyttelton

Supporting Local Groups



Next time you are at the Lyttelton Farmers Market on London Street, look out for the "Community Gazebo" where individuals are doing what they can to help raise funds for Lyttelton community groups. At the moment there is the just released pictorial book "Lyttelton, Akaroa and Banks Peninsula" by Cass Bay professional photographer Peter Morath. It is a marvellous collection of photographs celebrating the Banks Peninsula before, during and after the seismic events - with focus on how beautiful our region is, even without the heritage buildings. Proceeds from the book sale will go to the Lyttelton Harbour Information Centre so that they can create more marketing and promotional initiatives for the area. Peter's book is also available from the Lyttelton Harbour Information Centre and Leslie's Bookshop.



Another great fundraiser is a Lyttelton Pictorial Calendar created by Lyttelton resident Sally Harvey. All funds raised by the sale of this calendar will be donated in equal portions to the Lyttelton Community House, Volcano Radio and the Lyttelton Historical Museum Society. Following the devastating February 2011 Port Hills Earthquake, local restaurant chefs and cooks volunteered at the Lyttelton Community House preparing and cooking meals for elderly residents. This emergency response

highlighted the need for a Lyttelton based meals and wheels service, and a group of dedicated volunteers continue to cook for our vulnerable residents. Volunteers kept Lyttelton's Volcano Radio broadcasting from their studios at Shadbolt House from the day after the February earthquake to September, when the building could no longer be used. Funds raised will help Volcano Radio get back on air. The Lyttelton Museum on Norwich Quay was damaged beyond repair after the earthquake. Volunteer firemen and local residents worked tirelessly to salvage Lyttelton's historic treasures despite the risks that the old building presented. Volunteers at the Lyttelton Historic Museum Society are raising funds to rebuild and reopen the Lyttelton Museum. The calendar is also available for purchase from: Coastal Living; Leslie's Bookshop and Portico.

Both fundraising initiatives are professional productions and make ideal Christmas gifts for friends and family. Be sure to check out the Community Gazebo at the Lyttelton Farmers Market on Saturday to show your support, which will help Lyttelton to rebuild and recover stronger than ever.

Article and Images: Lyttelton Harbour Information Centre



Lyttelton Short Film Wins

Wonderful news for Lyttelton and two Wellington film makers Lena Hesselgrave and Sophia Hesselgrave, who won the Best in Open Category from the Inspiring Stories Film Competition with a film about Harbour Co-op and Lyttelton's newest restaurant Roots. You can view their short film at: <http://vimeo.com/46663368>

 **lytteltonharbour**
informationcentre

Providing Quality Local and Visitor Information

65 London Street, Lyttelton 8082
P: 03 328 9093

E: infocentre@lyttelton.net.nz
W: www.lytteltonharbour.info



C'mon Over: Roots Restaurant Opens

No. 8 London Street Set to Come Alive Again

The much anticipated Roots Restaurant will officially be open and taking reservations from Wednesday 21 November onwards. Take a moment to have a look at the new website and be sure to make a booking too.

Roots is the dream project of Lyttelton locals, Giulio and Christy. Located at 8 London Street [previously Satchmo's] the twenty seat restaurant has had a complete makeover, featuring an open kitchen, two dining rooms and a patio area where Giulio and Christy grow as many fresh herbs and vegetables as they possibly can.

The wine list is focused on small vineyards as well as locally made kombucha and beer, which all follow the restaurant philosophy: where everything is made from scratch and sourced as local as possible. Roots products are from organic suppliers, small producers, biodynamic farms and our own back yard. Roots will showcase the incredible commitment of the farmers and growers who produce and forage ingredients of extraordinarily high quality.

As the seasons come and go, you can expect the restaurant dishes to change with the flavours and colours of the local environment. Ever changing, ever growing the plates at Roots will mimic the cycles of mother nature.

Restaurant Hours:

Wednesday, Thursday and Friday	11.00am to 2.30pm	5.30pm to 9.00pm
Saturday	9.00am to 2.30pm	5.30pm to 9.00pm
Sunday	10.00am to 2.30pm	5.30pm to 9.00pm

Reservations are essential for dinner. And Roots offer a dinner menu to include your choice of either a five course, seven course or ten course tasting menu with optional wine pairings.

Roots Restaurant, 8 London Street, Lyttelton

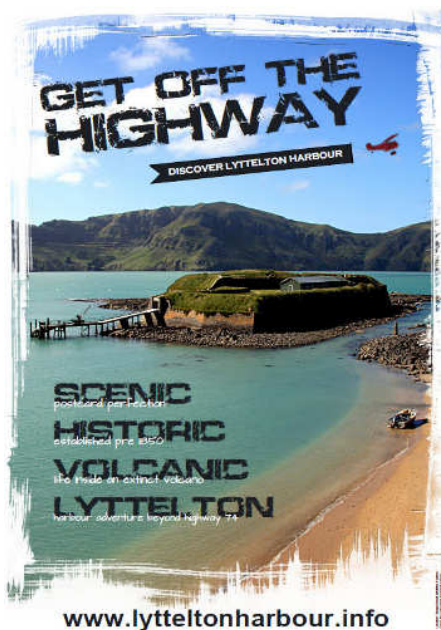
Phone: 03 328 7658

Email: info@rootsrestaurant.co.nz

Web: www.rootsrestaurant.co.nz

Article: Lyttelton Harbour Information Centre

Image: Roots Restaurant Logo



Lyttelton Exhibits at Motorhome Show

Toward the start of November the Lyttelton Harbour Information Centre took some exhibition space at the Christchurch Camper Care New Zealand Motorhome and Caravan Show; taking the chance to demonstrate to visitors to Canterbury the wonders of the Lyttelton Harbour. And positive feedback from event organisers has just been received:

It was encouraging to see the difference a year makes in the positivity of Christchurch and also encouraging to see the many Motorhome and Caravan sales that occurred over the weekend. The industry is in great heart.

Numbers were up slightly on last year with just under 8,600 visitors through the gate over the three days, with Saturday our busiest day. Steady numbers arrived throughout the whole day on the weekend, with very few periods we did not have a queue at the ticket desk.

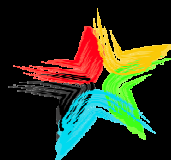
Article: Lyttelton Harbour Information Centre

Poster: Lyttelton Harbour Information Centre

Image: David Rice, Diamond Harbour - with thanks

Lynnette Baird Licensed Real Estate Agent
P: 03 328 7707 M: 021 224 6637

E: lynnette@realhomes.co.nz
W: www.realhomes.co.nz

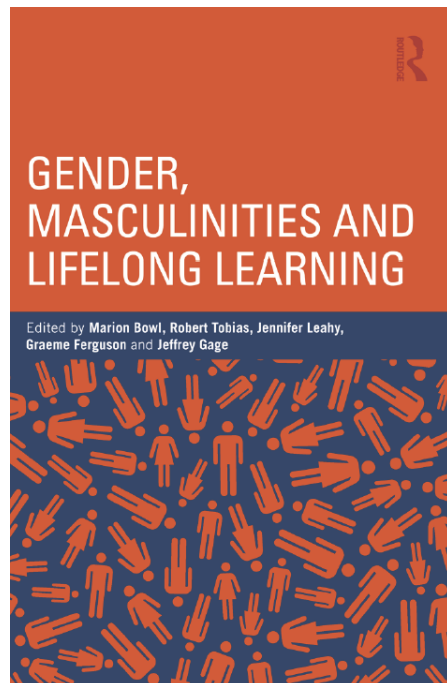


Professionals

Kennard Real Estate Limited MREINZ
www.kre.co.nz

about the lyttelton review

Lyttelton Review is a community newsletter initiative developed by local Professionals real estate agent Lynnette Baird and Lyttelton Harbour Information Centre chairperson Wendy Everingham. The objective of the Lyttelton Review is to help keep local residents informed with what is going on in the wider Lyttelton Harbour community. Each week readers can read about community groups; businesses; events; and everything in between. If you have an event, topic, cause, or other, that you would like to share with the harbour community, then we would love to hear from you. Be heard, be seen, be informed - read it or offer it here.



Gender, Masculinities and Lifelong Learning

Book Review

Lyttelton resident Robert Tobias kindly gave the Lyttelton Information Centre a copy of this book to read., and it was a fascinating read. Not coming from an education background the book gives some interesting insights into a topic that has been much talked about of late. Are men/boys having a crisis in education and life long learning? The book takes a thoroughly researched look at the issue and gives plenty of positive insights into the topic. Robert and co-writer, Marion Bowl conclude the only educational level where women's participation has grown in comparison to men's is at the degree level. They highlight how the entire issue is very complex and variations in participation are related to geography, age, education level, gender and occupation. They advocate inclusive educational approaches and reject those based on beliefs that all boys' or men's learning is fundamentally different from that of all girls or women.

An interesting quote from the book was "Underachieving boys are not new but their reduced employment prospects and employability are....[Lloyd 2002 :16]

The book also sheds some very interesting light on non formal learning for men. Whilst many men don't go to organised classes like many women, they still keep learning often in informal ways. The current men's shed initiative is an example of a non formalised way in which some men engage in learning and sharing. This is really popular in Australia and the book touches on how some men prefer "co-production participation", very similar to the ideals of the Lyttelton

Timebank. For many, learning has to be a two way thing and it requires an informal approach.

The book provides a great insight into learning in general, and the Lyttelton Harbour Information Centre has added this book to the Information Centre book exchange, if you are interested to read more. Alternatively copies can be purchased from the University of Canterbury Book Shop or direct from the publisher www.routledge.com/books/details/9780415667593

From the Publishers: *Gender, Masculinities and Lifelong Learning* reflects on current debates and discourses around gender and education, in which some academics, practitioners and policy-makers have referred to a crisis of masculinity. This book explores questions such as: Are men under-represented in education? Are women outstripping men in terms of achievement? What evidence supports the view that men are becoming educationally disadvantaged? Drawing on research from a number of countries, including the United Kingdom, Australia, New Zealand and Canada, the contributors discuss a range of issues which intersect with gender to impact on education, including structural factors such as class, ethnicity and age as well as colonisation and migration.

The book provides evidence and argument to illuminate contemporary debates about the involvement of men and women in education. Importantly, it critically addresses some of the taken-for-granted beliefs about men and their engagement in lifelong learning, presenting new evidence to demonstrate the complexity of gender and education today. With these complexities in mind, the authors provide a framework for developing further understanding of the issues involved with gender and lifelong learning.

Gender, Masculinities and Lifelong Learning will be of interest to any practitioner open to fresh ideas and approaches in teaching and programming connected with gender and education.

Book edited by: Marion Bowl; Jeffrey Gage, Jenifer Leahy, Robert Tobias and Graeme Ferguson



contact the lyttelton review

The team at the Lyttelton Review would love to spread the word about your community group, fundraising efforts, local heroes, business promotions, events and anything else that the local community would like to share. Deadline for any content: Friday before Monday publication date. Phone, Email, or Post: Lyttelton Review, PO Box 94, Lyttelton 8841.

Lynnette Baird	03 328 7707	021 224 6637	lynnette@realhomes.co.nz
Wendy Everingham	03 328 9093	021 047 6144	infocentre@lyttelton.net.nz

Shining the Light

Bioptron Light Treatment

Information Centre volunteer Dawn Cowan is keen to share her new life experiences with the wider Lyttelton community. She's been amazed at the richness of the Lyttelton community since she has had time to immerse herself in community life. Her life is much richer from the once hectic rush into Christchurch life, and then back to Lyttelton, exhausted and never seeing anything in between.

Life now is all about literally smelling the roses and enjoying the huge array of possibilities in Lyttelton. Since her big life change Dawn has loved learning about Project Lyttelton and getting involved with the positive energy. She is involved in the garage sales and is studying organic horticulture at Project Lyttelton every Tuesday. Dawn volunteers every Monday afternoon at the Information and enjoys meeting many new people as they pop in and out of one of Lyttelton's community hubs. She's a Timebanker, local gardener, crafts person and the list goes on.

All this positive change is a direct result of the change brought on by trauma. For Dawn the earthquakes have opened the doors to new possibilities and rather than be afraid of change she has embraced it. Her life now has more meaning and purpose and as she says she's now thriving and stepping out to shine. She's discovered her real self and feels she has literally stepped out from behind the mask that once hid her true character.

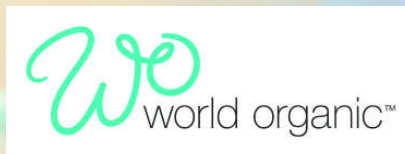
She's telling you this because she wants to inspire you to step into the light as well. She can't believe all the positive things that have happened to her since she stopped being afraid and has literally stepped out.

Are you nervous about stepping out? Do you need a hand? Dawn would love to share her experiences with you and help make you more confident to step out.

For a limited time, and for limited numbers, Dawn is offering free Bioptron light treatment and World Organics mini facials that will help you feel more calm and confident. She's into a concept called Fusion Therapy. Eventually this will form the basis of a home business and next year she plans to have a purpose built area at home. In the mean time she's happy to share her skills with you and she hopes her treatments will enable you to feel more confident and embrace change to make your life more fulfilling as she has done.

Dawn Cowan

Phone: 021 560 586
Email: dawn@healinglight.co.nz



Harbour Resilience Team

Plenty to Share Helper and An Old Boat Needed

Plenty to Share needs a group of people that can energise Saturday's food swaps. They need people that would be happy spending some time by the stall chatting with swappers and curious passers by and to help keep the stall looking nice and lush. If you are passionate about local food, if you like to mingle on a sunny Saturday and if you want to keep up with the local gossip, than this might be a perfect task for you.

The Harbour Resilience team are also on a hunt for old boats to convert them into "sailing" gardens. If you have one that you'd like to get rid off give them a shout. Never mind if the boat is leaky as long as it is in one piece and can handle a relocation.

If you can help if either of the above please get in touch with Nina via nina@lyttelton.net.nz or call 021 277 7712

subscribe to the lyttelton review

The Lyttelton Review is published every Monday and can be delivered straight to your email inbox. Just send an email with the words "subscribe me" in the subject line, then sit back and wait for the next instalment of local news, events and reviews. If you do not have access to email, but would like read about our local events, Professional Real Estate print hard copies that are available from Thursdays at the Lyttelton Club; Samo Coffee, Fisherman's Wharf or the Lyttelton Harbour Information Centre on London Street. Or a copy can be delivered to your door, if you live in within the Lyttelton township: Contact Lynnette on 03 328 7707.



Business Christmas Invitation

Lyttelton Harbour Business Association

Open invitation to all Lyttelton Harbour Business Association members and their guests, and anyone who runs their own business in the Harbour Basin area and would like to meet others. All who attend can enter the raffle to win a splendid Christmas hamper. Nibbles provided by the Naval Point Club. The bar will open for drinks.

What: Lyttelton Harbour Business Association Christmas Function
When: Tuesday 4 December, 5.30pm
Where: Naval Point Club
RSVP: admin@lytteltonharbour.co.nz

Wines for Christmas

Monday 3rd December

Let New Zealand Herald and The Press wine columnist and local author, Jo Burzynska take the strain out of selecting wines for the festive season. In this fun and informative festive Adventures in Wine tasting, Jo will be looking at wines that are perfect to pair with Christmas fare and suited to the season's celebrations, showcasing wines ranging from everyday barbecue drops to something for those special occasions. Eight fabulous wines will be featured, matched to some delicious canapes created by Freemans.

Book early to avoid disappointment by contacting Jo Burzynska by phone: 03 328 8846 or email: jo@joburzynska.com Those wishing to make an evening of it at this great little restaurant can book for dinner afterwards: www.freemansdiningroom.co.nz.

Further details about Adventures in Wine can be found at Jo's website: www.joburzynska.com Jo is also available to host tastings for groups and Christmas functions.

What: Wines for Christmas
Where: Freemans Dining Room
When: Monday 3 December, 6.30pm to 8.00pm
Tickets: \$45 | Contact Jo 03 328 8846

c'mon get involved

Lyttelton is known for its culture of volunteer activity and community participation. If you have ever had the thought that you would like to be more involved in the local community, but you are not sure where to go, or who to talk to? Start by having a conversation with the team at the Lyttelton Harbour Information Centre, as they can give you some advice on the many types of great volunteer organisations here in Lyttelton. If you are passionate about elderly care, sustainability, youth culture, harbour activities, heritage, radio, business development, fundraising, or just about anything - then there is a group who would love for you to be involved!

Greg Johnson's 20th Anniversary Tour

Lyttelton Show Added, 30 November



Greg Johnson will play an intimate show in Lyttelton at the Naval Point Yacht Club later this month – one of two extra concerts added to his 20th Anniversary Tour to satisfy demand.

Greg will be joined on-stage by Ben King [Goldenhorse] and Ted Brown for this intimate show at the Naval Point Yacht Club, Lyttelton - Friday November 30 [doors open 8pm].

In support, Kurt Shanks (ex-stellar*) and Ted Brown will play songs together from their respective and recent solo albums.

Fans all over the country have lapped up the chance to hear Greg Johnson return from Los Angeles to mark his 20th year on the music scene with this anniversary tour.

Greg and band will be playing everything from breakthrough single *Isabelle* through to other gems like *Don't Wait Another Day*, *Liberty*, *Save Yourself*, *It's Been So Long*, *Now The Sun is Out Looking Out On Monday*, *I Got Opinions*, and the soon-to-be favourites off new album *Exits*.

More details available at www.gregjohnsonmusic.com

Bugsy Malone at Lyttelton Main School

Tickets Are Now on Sale



Tickets are now on sale for the production "Bugsy Malone" at Lyttelton Main School. Be sure to tell your family and friends.

The story revolves around a likeable rogue, namely – Bugsy Malone. His love is boxing, he was a boxer, but gave up as he kept getting hurt. He now looks for potential fighters.

Blousey Brown is a singer who has come to New York to find a job, and hopefully become famous. She has an audition at Fat Sam's Grand Slam, (a night club), and meets Bugsy. Dandy Dan's gang attack Fat Sam's using a new weapon, "The Splurge Gun", and Sam realises he must get splurge guns too if he is to remain in business. The story is action packed with glamorous chorus girls, boxing heroes, bungling 'hoods' and many colourful characters.

Lyttelton Main School presents

Bugsy Malone: 29 November, 30 November and 1 December, 7.30pm

Directed by Mike Friend

Musical Direction by Carmel Courtney

Tickets on sale at: Lyttelton Main School Office
Phone: 03 328 8309

Coastal Living Picture Framers
Phone: 03 328 7350.

Gala night: Saturday 1 December. Everyone is encouraged to dress in 1920's style, enjoy a complimentary glass of bubbles and half price drinks at Freemans between 6.00pm and 7.00pm when you show your ticket.

Come and join the fun and support Lyttelton kids!

pass it on, spread the word

Not everyone receives these news letters, so please pass them onto anyone you think would be interested. We can also arrange printed copies for interested parties - just let us know. A big thank you to everyone who emails us with what is happening in their part of Lyttelton Harbour paradise. If you have news, or belong to a community group, own a business - get in contact with us, we would love to promote or share your story with the Lyttelton Harbour district. Errors, Omissions and Typos are all part and parcel of a volunteer service. These quirky additions are offered free for your amusement. But, if we have "got it wrong" - please just let us know.

Naval Point Club

Interested in crewing on a keelboat/trailer yacht?

Experience not necessary: We plan to run a series of training sessions for anyone interested in joining the crew of one of the bigger boats in the club. We're always on the lookout for keen people to join crews. This is not a "learn to Sail" programme but will provide some basic skills on what to do if you are invited for a ride on someone's boat. You will receive enough basic instruction to be an asset on board. If you'd like to take part contact the Naval Point Club office.

Organic Veggie Boxes

Delivered to Your Door

We are writing to let Lyttelton know about our upcoming veggie box scheme. As you may know, I am studying organic horticulture out at Lincoln and as part of my second year project, I am working with classmate Laura to grow fresh, seasonal, organic veggies to supply family and friends with. Some of you have shown interest in purchasing a box.

The proposed boxes are:

\$30.00 box with 6-8 different items delivered to your door on a Thursday

\$50.00 box with 10-12 different items delivered to your door on a Thursday

We think the \$50 box would be sufficient for a family or couple who eat four to five meals per week at home, or for one person who loves veggies. The smaller box is ideal for one person, or couple if they're not such veggie fiends! Each week will have seasonal recipes too. We will be starting the deliveries in December (first delivery date proposed for December 3rd) and we have been working hard these past few months to get lots planted and growing. Rather than asking for a box each week, we would like people to sign on for the weekly box scheme. Obviously if you're away or not into it anymore, we can work around that too. If you live far out of the delivery zone (between Lincoln and Lyttelton), we can arrange a pick up point.

Seasonal vegies we are planning to have ready for our boxes consist of...

Early season: lettuce, herbs, baby carrots, beetroot, spinach, pak choi, peas, radishes, potatoes and silver beet.

Mid season: all of above plus; courgettes, tomatoes, broccoli, eggplants, capsicum, beans, cucumbers, bulb fennel, onions and okra.

Late season: some of above plus; pumpkin, kale, turnips, yams, corn, cauliflower, brussel sprouts, leeks, squash, cabbage, and celery.

We will have access to some organic fruit too. There will be lots of delicious healthy food to fill your bellies.

Thank you in advance for your support. Let us know soon if you're keen.

Katie and Laura

Katie Dunlop

Email: ktdunlop@yahoo.com.au

C'mon Over: Himalaya Ripper Seasonal Sale

Sales Racks of no more than \$25, \$45, and \$65 a piece!

Mens and Womens clothing, including: Tops, Shirts, Jackets, Hoodies, Trousers, Dresses, and Skirts! You can also find NZ Wool Felted Bags, Purses, Hats, Slippers, Puppets and other accessories! \$25 or less! Jewellery - 70% off! Homeware heavily reduced! Rugs, table wear, cushion covers, wall hangings and more. Enrich your spaces with the exquisite designs of traditional textiles, and fine ornaments from Nepal, Tibet and India.

We have had some amazing new items come in, so come on over and check out the new and special items at Himalaya Design.

Himalaya Design

20 London Street, Lyttelton

suburban papers available

Do you know that each week at the Lyttelton Information Centre you can collect most of your local newspapers? We get all the editions of The Star, Bay Harbour News, generally the Akaroa Mail and sometimes the Christchurch Mail. Every Thursday we also have hard copies of our own Lyttelton Review. We also have local events advertised in our windows plus many brochures for events happening in the greater area.

Freeman

Dining Room • Bar • Deck

PRESENTS THE

CLASSICAL JAZZ DUO

JAZZ STANDARDS • WALTZES • TANGOS



CATHY IRONS ON VIOLIN
BARRY BRINSON ON KEYBOARD

ON THE DECK AT FREEMANS
47 LONDON STREET, LYTTELTON
SATURDAY DECEMBER 1ST, 3 - 5PM

Freemans

Live Jazz Sundays

About the Classical Jazz Duo

CATHY IRONS [violin] is an established violinist, touring NZ regularly as a performer and teacher. She performs in the Christchurch Symphony Orchestra and in recitals, often as part of the string trio Tres Cordes and also as part of the Classical Jazz Quartet. She has broadcast regularly on Radio New Zealand Concert, Plains FM and on television. She performed recently in Christchurch's IceFest and was the violinist in a production by the Court Theatre. She records and arranges for several rock artists and has recorded 5 classical CDs. She has recently "gone public" with her jazz violin and hasn't stopped to look backwards. She is also the Outreach and Education Coordinator for the Christchurch Symphony Orchestra.

BARRY BRINSON [piano] is a versatile Christchurch pianist, organist and harpsichordist with interests ranging from classical organ and jazz piano to composing, arranging and directing choral and instrumental ensembles. While a member of the choir and sub-organist at Christchurch Cathedral, in the 1980's, Barry directed a Consort of voices and instruments specialising in music of the baroque and renaissance periods. He is a former director of the Cathedral Singers and was also for many years the musical director for the Cathedral's jazz worship services. Barry is much in demand as an accompanist and arranger for both classical and jazz concerts, and prior to the earthquake of September 2010, was organist at Oxford Terrace Baptist Church.

Found

Do you recognise this photo? This was found near Lyttelton Main School two weeks ago. If you know who the people are or if it belongs to you please get in touch with the Lyttelton Harbour Information Centre 03 328 9093 infocentre@lyttelton.net.nz



lyttelton market town

Saturday mornings are never dull in Lyttelton! Enjoy the local markets including the Lyttelton Farmers Market for fresh produce, meat, fish, eggs, honey and yummy baked goods. Head up to the Grassy Art and Craft Market for bargain items or unique art items from creative local artists. Also be sure to check out the Community Garage Sale located up the driveway behind the swimming pool. The Garage Sale is a fundraising activity for any Lyttelton community group; so if you're not buying, feel free to donate items instead.

Lyttelton Community Emergency Action Plan

Work is soon to commence on the drafting of Lyttelton's Community Emergency Action Plan. The goal of the project is to ensure Lyttelton is self sufficient with respect to shelter, food, transport, services, finance and shared emergency services facilities in the event of future disasters.

A community workshop will be held on **November 20th at 7pm**, at the **Naval Point Yacht Club**. If you would like more information, or to be involved, please contact Alicia Palmer, CDEM Public Education & Community Resilience Coordinator, Christchurch City Council, on 941 8217, or via email: alicia.palmer@ccc.govt.nz.

Available to Rent

Lyttelton: Modern four year hold home located on Simeon Quay available for rent. Three large bedrooms, two bathrooms, and easy to keep with no lawns or garden to worry about. This would make a great home for someone short term while repairs are being done on their own home. Pets will be considered. \$550 per week. For more details contact Fiona via email at blythefamily@hotmail.com or phone|text mobile 021 125 0547.

Governors Bay: Beautiful three bedroom, two bathroom cottage available to rent in Governor's Bay. Open plan living and large easy care section. Comes fully furnished for \$900; or \$480 without furniture. Negotiable for long term tenants. Will be available from 1st December 2012. For further information, please contact Thoje 03 329 9922 mobile 021 997 833 or email thoje@roc.co.nz

Your Views:

This week in the mail box we received this note from Lyttelton resident Doug Illingworth:

Dear Janine Sowerby

Thank you for your letter regarding your councils plans for your associate town of Lyttelton's future. I was certainly pleased to see you mention your co-operation with our local elected representatives. Up till now they have been arrogantly ignored by your council which is now starting to realize that our crater town is quite a different world to suburban Christchurch. They understand the view based culture of the old volcanic island.(Something that is being eroded by more recent inhabitants planting view blocking trees and building high roof lines) There should be a by law against this selfish practise. One addition to local recreation that would be welcome is one inner harbour wharf opened to the people. Either five or six would be ideal.

Many thanks for the hard and skilful work being done in our town following the seismic blitzkrieg that has shattered many lives.

Sincerely Doug Illingworth

If you would like to share your views, contact the team at the Lyttelton Review. Deadline for any content: Friday before Monday publication date. Phone, Email, or Post: Lyttelton Review, PO Box 94, Lyttelton 8841.

Lynnette Baird	03 328 7707	021 224 6637	lynnette@realhomes.co.nz
Wendy Everingham	03 328 9093	021 047 6144	infocentre@lyttelton.net.nz

plenty to share

In Lyttelton so many residents grow vegetables; or have fruit trees literally dripping with produce. Plenty to Share is about sharing any excess produce with the community. So if your lemon tree is yellow with goodness and you can't keep up with making lemon curd or drinking enough gin and tonics, bring those surplus fruits down to the organisers, where every Saturday the swapping of produce is well underway. If there is something on the Plenty to Share table that you would like to take home, then you are warmly invited to do so. You will find Plenty to Share on the corner of London Street and Canterbury Street.

SCIRT Works Update

Shoring up Lyttelton - Retaining Wall Progress

Aside from the hilly terrain, narrow streets and torrential rain created their own special work site challenges for the SCIRT crews rebuilding retaining walls in Lyttelton, the city's port town.

Three SCIRT delivery teams - Fulton Hogan, Fletcher Construction and McConnell Dowell (MacDow) are working on sites across Lyttelton. Each site has signs so people know who to talk to for further information. In most cases these walls, once completed, will be painted with anti-graffiti paint. The old walls' red rock is being conserved by the Historic Places Trust.

Local residents have been very forgiving and tolerant of the work sites on their doorsteps and lack of access, something all crews have appreciated.

All SCIRT work crews in Lyttelton will be packing up on Friday 21 December and restarting 7 January, 2013.

Canterbury Street

Canterbury Street – the main wall up to Ripon Street is 90% complete and will be finished mid December.

Above 64 Canterbury Street - wall outside the cemetery - 90% complete and will be finished at the end of November.

79 Canterbury Street (opposite cemetery) – this wall is due to start mid-late November and will be finished late December.

93 Canterbury Street - concrete block retaining wall completed. Asphalt ordered for the day of the floods unfortunately washed out the fill behind the wall, creating a week-and-a-half rework.

Cunningham Terrace

The work is currently on schedule and due for completion March 2013. 65% of the king posts have been installed, 20% of the ground anchors have been installed. All precast concrete works are complete and 25% of panels are installed. The east end stairs are 80% complete and the west end stairs will be completed in the next fortnight to the end of November. By Christmas all the anchors, king posts and panels will be installed.

London Street

80 London Street - soil nails and retaining wall is on schedule, expected to finish early February.

78 London St - mechanically-stabilised earth retaining wall completed. Poor soil conditions at the foundation level combined with heavy rain caused delays and alterations to the design at the upper section of the wall.

Ripon Street

Ripon Street, upper and lower sections - this wall is 80% complete and will be finished mid December.

Sumner Road

Progress on stage one has been good with 90% of anchors installed and tested and the remaining 10% due for completion by December. Installation of the modular block wall is advancing fast. Currently 25% of the wall has been finished with 80% expected by the Christmas break. The first stage of the wall will be completed by March 2013, the second stage will be underway early 2013.

Ticehurst Road

23 Ticehurst Road – Wall 1, concrete block retaining wall completed.

23 Ticehurst Road – Wall 2, concrete retaining wall 95% completed with some changes to the original methodology to improve construction safety. Stairs should be in place before Christmas.

23 Ticehurst Road – Wall 3, concrete masonry retaining wall unit completed.

32 Ticehurst Road is being redesigned. Initial site establishment uncovered poor ground conditions for the foundations and required a new design. Geotechnical testing is being carried out to help determine suitable foundation design.

34 Ticehurst Road – this wall will be completed after 32 Ticehurst Road.

<http://strongerchristchurch.govt.nz/article/shoring-up-lyttelton-retaining-wall-progress>

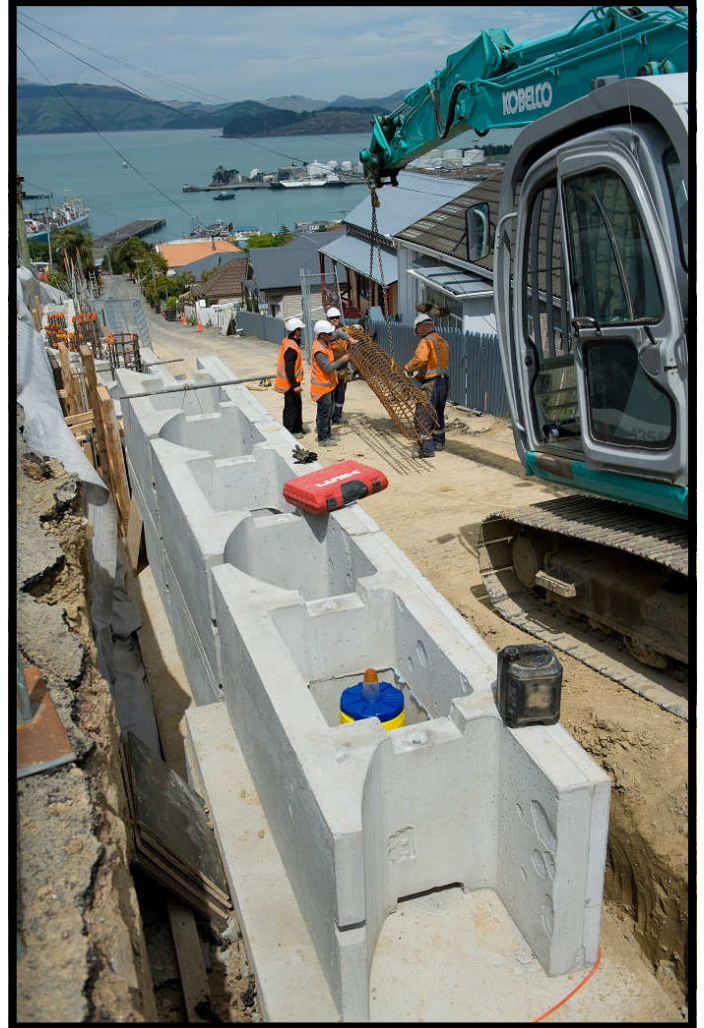
combined church service

Since the deconstruction of Lyttelton's historic churches you may not have heard that Lyttelton hosts a combined church service every Sunday morning at 10.00am at the St Joseph's Community Centre, 21 Exeter Street, Lyttelton. All residents welcomed.

sunday 10am : st joseph's community centre

SCIRT Works Update

Retaining Wall Progress: Images from Lyttelton



Clockwise from Top Left:

Cunningham Terrace retaining wall and road progresses thanks to the Fulton Hogan crews.

Canterbury Street activity and MacDow crews, two photos.

LEFT: A local lad has plenty to keep him interested from his Canterbury Street verandah.

Article: SCIRT Rebuilding Infrastructure
Images: SCIRT Rebuilding Infrastructure

Visit:
<http://strongerchristchurch.govt.nz/article/shoring-up-lyttelton-retaining-wall-progress>

“c'mon get involved”

November 2012

Lyttelton Harbour

Community Garage Sale

All donations of good used, or new, household items greatly accepted at Project Lyttelton 54a Oxford Street. Please do not donate items that cannot be sold, as this increases our costs trying to take unwanted items to the charity barn, or worse still the rubbish depot.

Governors Bay Pre-School Music

Preschool music classes run on Thursday mornings during school term, 9:15 - 10am in the Governors Bay School library. Come and join us for singing, dancing and musical games. Cost \$3.50. All under 5s welcome, please bring a grown-up with you. Contact Mel Dixon 3299 908

Lyttelton Community Association

New members welcome. As an issues based organisation, we do not hold regular meetings. If you would like to be advised of when the next meeting will be held, or have an issue to discuss, please email us at LCAsn@vodafone.co.nz or phone Ken Maynard 03 328 9553.

Lyttelton Community House

Meals for the elderly continue to be prepared and delivered daily. If you know of any elderly residents who need this service, or would like to volunteer to assist, please contact Christine or Courtenay 03 741 1427.

Lyttelton Harbour Basin COMMUNITY Civil Defence

New members welcome. Meet second Monday of every month, 7.00pm St Johns Ambulance Station, London Street. To become involved contact the Area Co-ordinator Julie Lee on 03 328 7779 or 027 739 1832.

Lyttelton Harbour Business Association

For more details visit: www.lytteltonharbour.co.nz

Lyttelton Harbour Information Centre

Monday to Friday 11.00am to 3.00pm; Saturday 10.00am to 1.00pm; Sunday 11.00am - 2.00pm.

Lyttelton Harbour/Whakaraupo Issues Group

Next meeting Tuesday 13th November 6.30pm at Governors Bay Fire Station. All welcome. For more information contact Melanie Dixon 329 9908 or see our website: www.ecan.govt.nz/lhwig.

Lyttelton Lions

Meet on the 2nd Tuesday of each month at Community House at 7.30pm. Anyone interested in becoming involved, or anyone who would like to learn more about this organisation, is most welcome. Contact Mary Jamieson 03 328 8523.

Lyttelton Historical Museum Society

Lyttelton Museum committee is developing a concept plan for the re-building of Lyttelton Museum. Meetings held once a month. New members, donations or any other support is welcomed. Lyttelton Museum, PO Box 95, Lyttelton. 328 8972 lytteltonmuseum@xtra.co.nz

Lyttelton Reserves Management Committee

Reserves Committee meets on a regular basis to make decisions about the management of the reserves. It organises weed control and planting programmes that include public and schools planting days. To be involved email the group at reserves@lyttelton.net.nz.

Lyttelton Time Bank

Either Bettina, Lisa or Lottie will be at the Lyttelton Harbour Information Centre every Tuesday, Wednesday, Thursday, and Friday 9.00am to 11.00am. Phone: 021 806 406 or email the team at timebank@lyttelton.net.nz

Lyttelton Volunteer Fire Brigade

Meets for training and maintenance every Thursday night from 7.00pm at the temporary station in the Lyttelton Port Company admin building car park, 56 Norwich Quay. If you are interested in joining, then pop on in. Russ Barron, Brigade Secretary.

Lyttelton Youth Centre

Youth Centre/Community House, 7 Dublin Street, Lyttelton. Contact Christine 03 741 1427 for further details.

Plunket Playgroup

The Plunket Playgroup can be found at Lyttelton Main School, every Monday and Wednesday, 10.00am to 12noon. 50 cents donation and everyone is welcome. Contact Lisa York-Jones 03 328 8918 for more information.

Project Lyttelton

The Portal, 54a Oxford Street, Lyttelton [located behind the Swimming Pool]. Office 03 328 9243.

Toy Library

The Lyttelton Toy Library is now at 25 Canterbury Street. Sessions are every second Saturday 9.00am to 11.00am. \$42.00 per year to join. Provides children 0-5 years with toys, puzzles, games, dress-ups to loan. Contact Toy Librarian: Roz Jenkins 328 8552.

Volcano Radio

Currently - Off Air. Fundraising t-shirts available from Portico, 48 London Street.

“business directory”

support our local businesses

November 2012

Lyttelton

Abbraccia Bellydance	41 Voelas Road [West School]	03 328 8883	Paige 021 999 848
Acupuncture Therapy	18 Oxford Street	03 328 9053	Robin Kerr
Alexander Technique	Private Address	03 328 8968	Belinda Walker
Alterations and Ironing Service	Oxford Street	Private No.	Wendy De Backer 021 0288 1466
Bank of New Zealand	56 London Street	0800 80 04 68	Trish, Kelly, Donna
Banks Peninsula Accounting	PO Box 83, Lyttelton	03 328 7231	Chris 021 280 0086
Beauty by Carly	Private Address	Private No.	Carly 021 294 5676
Bells Pharmacy	50 London Street	03 328 8314	
Body Kinetics - Gym Fitness	Oxford Street	03 328 7002	Jen 027 204 1224
Choice Take Home Dinners	20 London Street	03 328 8784	Available 5.00 - 6.00pm
Christchurch Council Service Centre	35 London Street	03 941 8999	Debbie/Patricia
Christchurch Yoga	Private Address	03 328 8889	Rebecca 021 071 0336
Coastal Living / Picture Framers	34 London Street	03 328 7350	
Coffee Culture	18 London Street	03 328 7080	
Dandy Designs - Web Business Develop	Private Address	03 328 8646	dana@dandydesigns.co.nz
Diamond Harbour Ferry	B Jetty, Lyttelton Wharf	03 328 9078	
Dockside Apartments	22 Sumner Road	03 325 5707	Grant / Kathy
Everest Indian Restaurant	2 London Street	03 328 8185	Parminder Singh
Fishermans Wharf	39 Norwich Quay	03 328 7530	
Freemans Restaurant	47 London Street	03 328 7517	
Frog Web Works	14 Winchester Street	Private No.	Graeme 027 473 5018
Four Seas Restaurant	23 Dublin Street	03 328 8740	
Ground Gourmet Foods, Catering	Lyttelton Farmers Market	Private No.	Jenny 022 476 8633
Harbour Co-Op	12 London Street	03 328 8544	
Hands on Health Nutrition Massage	Private Address	Private No.	Rebecca 027 494 6349
Himalaya Design	20 London Street	03 328 7600	Wed-Sun 10.00am - 4.00pm
Home Based Child Care	Private Address	03 328 7217	Marcia 021 236 1682
Irish Pub	17a London Street	03 328 8085	Ross, Janet, Roger and Sandy
Jack Tar Sailing	West Side, No.7 Wharf	03 389 9259	Mike Rossouw
Land Arch Landscape Architects	13 Exeter Street	03 328 8882	dan@landarch.co.nz
London Fish and Chips	34 London Street	03 328 8819	
London Street Books	48 London Street	03 328 8088	Thurs-Sun
London Street Dairy	34 London Street	03 328 7358	Open 7 Days
Leslies Bookshop	18 Oxford Street	03 328 8292	
Lyttel Beauty	32 Voelas Road	03 328 7093	www.lyttelbeauty.co.nz
Lyttelton Bakery	34 Norwich Quay	03 328 9004	
Lyttelton Builders Limited - Office and Yard	16 Canterbury Street	03 328 9305	Peter Tocker 021 862 537
Lyttelton Harbour Information Centre	65 London Street	03 328 9093	
Lyttelton Library	35 London Street	03 941 7923	
Lyttelton Health Centre	18 Oxford Street	03 328 7309	
Lyttelton Physiotherapy	18 Oxford Street	03 328 8111	
Lyttelton Recreation Centre	25 Winchester Street	03 941 5656	
Lyttelton Sea Foods	26 Norwich Quay	03 328 7628	
Lyttelton Service Station	1 Canterbury Street	03 328 8749	
Lyttelton Shuttle	Airport, Tours, Anywhere	Private No.	Linda 021 254 4986

“business directory”

support our local businesses

November 2012

Lyttelton [continued]

Lyttelton 'Top' Club	23 Dublin Street	03 328 8740	
Mac Todd Solicitors	50 London Street	03 328 9992	Ray Blake 021 43 66 50
Min Sarginson Real Estate	53 London Street	03 328 7273	Min Sarginson 027 432 0327
Mondo Vino	42 Norwich Quay	03 328 7744	
Orbit Architecture	5 Norwich Quay	03 328 9294	Neil Aitken 021 155 5601
PedalOn Bicycle Service	2 Exeter Street	03 328 9246	021 055 6865
Port Electric	Private Address	03 328 8099	Ken 021 117 6848
Port Hills Auto Centre	42a Norwich Quay	03 328 9980	
Porthole Bar	40 London Street	Private No.	Mike 021 328 977 [Tue-Sun]
Portico	48 London Street	03 328 8088	Tue-Sun 10am - 4pm
Professionals Real Estate	36 London Street	03 328 7707	Lynnette 021 224 6637
Project Lyttelton Office	54a Oxford Street	03 328 9243	Sue-Ellen
Pynenburg and Collins Architects	PO Box 80, Lyttelton	Private No.	Simon 021 163 7193
Ray White Real Estate	47 London Street	03 331 6757	Marie Daisy
Roots	Private Address	Private No.	Christy Guilio 021 120 8083
Rossouw Window Cleaning	Private Address	03 389 9259	Mike 0274 355 239
SAMO Coffee	3 Canterbury Street	Private No.	Open 7 Days
Sno Clothes and Milly May	8a London Street	03 328 8584	Heather
Special Branch NZ Arborist	Private Address	Private No.	Tim 022 091 9202
Storm Hairdressing	34 London Street	03 328 8859	Sally Kat
Thea Mickell Services Ltd Fundraising	Private Address	03 384 7547	Thea 027 607 7282
The Mindful Body	Private Address	03 328 9923	Janet 027 368 6515
The Rookery	Ross Terrace	03 328 8038	Angus Rene
Time to Resolve Mediation Service	Private Address	03 328 8219	Chantal 022 618 8532
View Hairdressing	Private Address	Private No.	Megan 027 488 5173
Volcano Radio	Private Address	03 328 8566	
World Organics Skincare	Private Address	03 328 7446	Nicki 027 423 9455

Diamond Harbour

Bronwen Jones- Writing and PR Services	Rawhiti Street	03 329 4303	www.bronwen-jones.com
Chalfont Cafe D.Harbour Country Store	2 Waipapa Avenue	03 329 4854	Open 7 Days till 5.30pm
Diamond Harbour Ferry	Waipapa Avenue	03 328 9078	
Diamond Harbour Medical Centre	2a Waipapa Avenue	03 329 4402	
Orton Bradley Park	Marine Drive	03 329 4730	
Snowdrop Cottage Children's Store	Waipapa Avenue	03 329 4464	Open 7 Days 9.00am - 5.00pm
Shunyata Retreat Day Spa	10 Rawhiti Street	03 329 4773	Contact Paru
Thrive: Chiropractic, Acupuncture, Nutrition	Private Address	03 329 3254	Mark and Lou Warren

For news, events, and what is open or closed in Diamond Harbour, visit: www.diamondharbour.info

Governors Bay

At Home Childcare Limited	18 Bay Heights	03 329 9970	Neave Ross-Wallace
Governors Bay Hotel	52 Main Road	03 329 9433	
She Chocolat	79 Main Road	03 329 9825	
Living Springs	Bamfords Road	03 329 9788	

For news, events, and what is open or closed in Governors Bay, visit: www.governorsbay.net.nz

“accommodation”

places to stay around the harbour

November 2012

Lyttelton

- **Dockside Apartments.** Three private apartments enjoying harbour views, now open and available for casual holiday or short term occupancy. Scenic and so close to London Street, this is an ideal option for friends or family to stay. Options range from studio; one bedroom or two bedroom apartment. Tariff from \$90 - \$120 per night. Phone Grant or Kathy on 03 325 5707 or view more details online www.dockside.co.nz.
- **No.1 Apartment.** Warm two bedroom apartment with magnificent harbour views available for holiday or short term accommodation. Undercover parking. Tariff \$120 per night with minimum three night stay. Longer rates available on enquiry. Phone Linda 03 328 9128 or 021 254 4986.
- **Randolph Apartment.** Private two bedroom modern apartment with superb views across Lyttelton and inner harbour is now available for holiday or short term accommodation. Apartment features private spa, bar-b-que area, off street parking for one vehicle, and all the mod-cons including WIFI and MySky television. Tariff from \$120.00 per day, with minimum three night stay. Longer term rates available. Phone Heather 03 328 8585 or 03 328 8584.
- **The Rookery.** Built in 1866 The Rookery Bed and Breakfast is one of the oldest surviving local cottages, with wonderful panoramic views of the historic port town of Lyttelton, the main harbour, Quail Island, surrounding hills and volcanic cliffs. Three beautifully renovated rooms are available; one with ensuite facilities. Tariff from \$115 - \$160 per night. Phone Angus or Rene Macpherson on 03 328 8038 or view more details on line www.therookery.co.nz.

Diamond Harbour

- **Diamond Harbour Lodge** is the perfect place to relax, enjoy and unwind. Offering harbour sea views, spacious rooms, TV/DVD, CD player, large selection of books, board games, free wireless internet, fridge, toaster, jug, microwave, sink, selection of tea, complimentary cookies, electric blankets, underfloor heating in bathroom, heated towel rail, linden leaves toiletries, towelling bath robes. Robyn and Pete Hedges 3 329 4005 or visit www.diamondharbourlodge.co.nz
- **Manaaki Eco Farmstay Purau** offers self contained ensuite accommodation. One or two bedrooms with spacious fully equipped kitchen/living in a beautiful rural setting overlooking Purau Bay. Holiday (min 2 nights) or longer term rates available. Contact Wendy ph 329 3202 or view us online www.ecofarmstaypurau.co.nz
- **Mt Evans Bed and Breakfast** offers accommodation in two self contained cottages. Quiet rural setting only 500m from the beach. For further information contact Pauline 03 329 4414 or visit www.mtevansbnb.co.nz
- **The Old Exchange Bed and Breakfast** right in the heart of the Village at 2 Waipapa Avenue. Two queen sized bedrooms with ensuite bathrooms, own private entrance, sea views and within walking distance of the Ferry. Contact Jill 03 329 4275 or 027 482 6014.
- **Orton Bradley Park** offer self contained camper van sites for overnight stays. Services include 15 powered sites; treated drinking water; toilet blocks and dump site, with the golf club and tennis court next door. Fees start from \$15.00 per night for two persons, with additional adults at \$6.00 per night. Contact 03 329 4730.

Governors Bay

- **Governors Bay Bed and Breakfast** offers a place to relax and rejuvenate on nine acres to bush side paradise beside the harbour. Enjoy breakfast on the deck while listening to the native bird song. Furnished room with ensuite bathroom and separate sitting area also available for short term rent for those seeking emergency accommodation. For more details contact Eva on 03 329 9727, or view on line www.gbbbedandbreakfast.co.nz.
- **Governors Bay Hotel** has been restored to it's former glory and offers six guest rooms located on the first floor level. All rooms recently renovated with 32 inch flat screen televisions, queen size beds, free wifi broadband, heaters, electric blankets and vanities. Four of the rooms have direct verandah access through French doors opening out onto a balcony with wonderful views over the Lyttelton harbour. Contact the Governors Bay Hotel on 03 329 9433 or view more details on line: www.governorsbayhotel.co.nz.
- **Living Springs** offer an array of accommodation options from fully service private rooms, studios, twin rooms, shared bunkrooms to outdoor camping. Also available are some powered caravan sites. All rooms are clean, comfortable and well maintained for your relaxation. Contact Living Springs on 03 329 9788 or view more details on line: www.livingsprings.co.nz.

“harbourvibe”

what's on around the harbour this week

November 2012

21 Wednesday

Creativity Meet	10.00am	Lyttelton Library, London Street	Knit, Crochet or Bring Another Hand Craft
Community Garden	10.00am	The Portal, 54a Oxford Street	Shared lunch from 12.00pm
Roots Restaurant	11.00am	8 London Street, Lyttelton	Opens Today! Book 03 328 7658
Marlon Williams Live Music	8.00pm	Porthole Bar, London Street	Live Music Wednesday Free

22 Thursday

Governors Bay Pre-School Music	9.15am	Governors Bay School Library	All Under 5s Welcome wAdult \$3.50
Lyttelton Volunteer Fire Brigade	7.00pm	LPC Building, 56 Norwich Quay	Weekly training etc New members welcome
Contra Dance Night	7.30pm	Private Address, Cass Bay	Contact Bill 03 328 8985 \$5
Al Park Live Music Thursday	8.00pm	Porthole Bar, London Street	Live Music Thursday Free

23 Friday

Senior Exercise Class	10.30am	Lyttelton Main School Hall	All welcome. \$5.00 per session
-----------------------	---------	----------------------------	---------------------------------

24 Saturday

Lyttelton Farmers Market	10.00am	London Street, Lyttelton	Fresh produce; Live Music; Buskers and More
Lyttelton Garage Sale	10.00am	The Portal, 54a Oxford Street	Second Hand Bargains and More
Grassy Market	10.00am	The Grassy, Oxford Street	Art, Craft and Bric-a-Brac
Lyttelton Museum Historical Society	10.00am	Lyttelton Main School Hall	Meeting. New members welcome.
Cecily at Milly May	10.00am	8a London Street	Courtyard Full of Christmas and Gift Goodies
Plenty to Share	-	Cnr London and Canterbury	Bring, Exchange and Share Food

25 Sunday

Combined Church Service	10.00am	St Josephs Parish Centre	21 Exeter Street All welcome
Live Jazz Sundays	3.00pm	Freemans, London Street	Carmel Courtney Live Free
Cross Dressing Sunday Sundae Beats	8.30pm	Wunderbar, London Street	Pop on a Frock Visit Ms Candy Applebottom

26 Monday

Community Garden	5.30pm	The Portal, 54a Oxford Street	Make new friends, enjoy the fresh air
LIFT Library - Film Evening	7.15pm	The Portal, 54a Oxford Street	Thought Provoking Film Series

27 Tuesday

Community House Shared Lunch	12.00pm	Comm.House, 7 Dublin Street	Make new friends
Lyttelton St John Youth Division	6.00pm	St John Ambulance Station	52 London St, Lyttelton

Lyttelton Review is proudly sponsored by:
Lynnette Baird - Lyttelton's resident Professionals Real Estate Agent



Lynnette Baird | Licensed Real Estate Agent
P: 03 328 7707 M: 021 224 6637
E: lynnette@realhomes.co.nz
W: www.realthomes.co.nz



Professionals

Kennard Real Estate Limited MREINZ
www.kre.co.nz