

# “lyttelton review”

lyttelton harbour community update

[www.lytteltonharbour.info](http://www.lytteltonharbour.info)

6 August 2012  
E51

## Lyttelton Farmers Market

Supporting Sustainable Living

The Lyttelton Farmers Market typifies what is great about our town. A market place where local residents meet to buy delicious locally created food and produce, chat, catch up, live more sustainably and just enjoy life.

Part of the joy of coming to the market is the relationships we as customers make with the market vendors. It is lovely to be able to come and chat to our favourite stalls about food, what's in season and also life in general. That is something that really appeals to Andrew and Gerry Lewis from Horotane Foods. They have been trading at the Lyttelton Farmers Market for many years now. They came to the market from a background of working extremely hard in the hospitality industry.

When they moved back to Christchurch they wanted to create a lifestyle for their young family that mirrored Gerry's free life as a child in Wellington. So they left the restaurant trade and bought a lifestyle block in the Horotane Valley. Initially they were producing vegetables for the restaurant trade but then they decided that selling directly at the Farmers Market was the lifestyle that they wanted. Luckily for Lyttelton they choose to trade at our market.

"It's a lovely way to make a living and get that two way contact with your customers" said Gerry. "Often people queue up and wait patiently just so they can chat to me". She also loves the trading between stallholders. Sometimes husband Andrew will pop a box of seasonal produce into the van to take home and Gerry delights in creating meals for the family from it.

Gerry exhibits all the skills of a really talented cook. When we ask for her favourite recipe to be added to this article her reply is, "I make things from intuition and don't use recipes". Their stall is a mixture of home baked goodies, pesto and fresh produce. Currently rocket is in abundance and they stock fresh herbs and lemons. The rocket is a particularly great addition to pasta. Just add some lemon juice, rocket and some shavings of parmesan and you have a very easy dinner.

For Andrew and Gerry, trading at the Lyttelton Farmers Market has enabled them to achieve the lifestyle that suites them. They can live according to the seasons, create beautiful food with seasonal produce, bring up their young family in a more rural environment and enjoy the interaction with the customers who regularly visit their stall each week.

You will find Gerry and Andrew's stall, Horotane Foods, at the beginning of the market just past the flower seller. Next time you visit make sure you say hello and see what seasonal delights are for sale.

Article and Image: Lyttelton Harbour Information Centre

# Lyttelton Business Champions

Business Development and Web Design: Dandy Designs

# Dandy Designs

Here at the Lyttelton Review we applaud our local businesses. Some work from home, some operate from the town centre, and others are giants in their own right spread across the industrial and port land of Lyttelton. A significant number of these businesses 'give back' to the Lyttelton community, adding to the rich tapestry of Lyttelton culture and lifestyle, and each contributing unique skills to make Lyttelton the strong community it is.

This week the Lyttelton Review talks to Dana Dopleach, creator of Dandy Designs and Chairperson of the Harbour Co-Op. Originally from the USA, Dana discovered New Zealand and Lyttelton, making her home here with her English husband and young son. Like many newcomers they were attracted to Lyttelton by the strong community culture and the possibility of creating a better life balance. Working from their Lyttelton home office on Jacksons Road, Dana and her husband Andy utilise their vast business experience to help small to medium sized businesses grow. They do this by developing and fine tuning the businesses web presence, together with helping them to understand the importance of business analysis. They illustrate this point by commenting that "a great web site design can never reach its full potential if the customer can't read or follow it". Analysing each visitor response to a company web site enables the business to adjust, and improve, its online marketing strategy. This helps each business to focus on the important, not just the urgent.

Dana explains that she concentrates on the business development side of things, assisting small businesses to fill in the gaps to make them more efficient and productive. Originally a botanist Dana applies a systems approach to the clients she works with and helps them achieve a more rounded way of operating. Coupled with Andy's programming and web skills, the two of them play a major role in transforming small enterprises. One of their unique offerings is a 'managed commerce' site. This is a marketing partnership with businesses that have a history of excellent customer service and a unique product offering in their local area, who are looking to expand their market. The businesses who meet the criteria can have a site that is completely created and operated by Dandy Designs in return for a share of the direct sales the site provides. This allows their clients to focus on their core business competencies knowing their web partner is driving their business forward.

Dana and Andy are also lending their business expertise to local community initiatives, including the recently formed Harbour Co-Op. In fact Dana is the chairperson for this co-operative organisation, citing her motivation for involvement is her passion for local organic food, love of community and a chance to put her many talents to use for the good of the community.

If you own a small business and would like to see it grow; if you have ever wondered if your web site is really delivering all that it can; or if feel your business could do with a boost of new energy - give Dana at Dandy Designs a call and ask how she can help you:

## Dandy Designs - Lyttelton

Phone: 03 328 8646

Email: [dana@dandydesigns.co.nz](mailto:dana@dandydesigns.co.nz)

Web: [www.dandydesigns.co.nz](http://www.dandydesigns.co.nz)



Article and Image: Lyttelton Harbour Information Centre





## Traffic Restrictions Oxford Street Bridge

Lyttelton Port Company Advisory Notice

From Tuesday 31 July to Friday 24 August, access to the Oxford Street over bridge will be restricted between the hours of 7.30am and 5.00pm to allow testing of the cable ducts. The work involves exposing points along the duct to determine the integrity of the cable ducting.

The following traffic management plan will be in place: A temporary maximum speed limit of 30 KPM will be enforced; Pedestrians will have access but will be

directed around the worksite; Temporary signs and cones will be installed advising of the pending works.

Downer EDI have been engaged to manage the project, but if further information is required, please contact George Philips, Marine and Security Manager on 027 678 9026.



## Port Area Land Ownership Change

Lyttelton Port Company Advisory Notice

Lyttelton Port Company has purchased from the Christchurch City Council a 2,625 m2 section of road between Cyprus Williams Quay and George Seymour Quay.

The land adjacent to this roadway is marked for future development, and the purchase of this land is designed to provide the thoroughfare along Cyprus Williams Quay and George Seymour Quay.

Access through this roadway is no longer open for public use, and is to be used for port customers or port business only. Public access to the inner harbour slipway will remain open and last week a sign was erected informing the public.

Lyttelton Port will continue to provide updates on progress. If you have any queries, please contact Lyttelton Port Company Project Manager, Paul Kelly on 027 333 5868.



## Quail Island Planting

Lyttelton Port Company Assists

Did you know that the Lyttelton Port Company are involved in a variety of local sponsorships, and that they have developed partnerships with several local community groups and/or events which fit with the company's core values.

It is the port companies intention that sponsorship should support the local community [such as the Lyttelton Harbour Festival of Lights], foster youth development [sponsorship of the Lyttelton Rugby Junior teams] or safeguard our

local environment for instance, the Quail Island Ecological Restoration Trust.

And on the topic of the Otamahua/Quail Island Ecological Restoration Trust, on Monday 30 July the marine team on Lyttelton Port of Christchurch Rescue assisted the trust to move 3,000 plants to Quail Island for its annual planting programme.

Recently the Lyttelton Port Company joined other local businesses to bring the Community Watch Patrol through from Sumner into Lyttelton and the harbour basin. Volunteers ensure the success of this programme.

The Lyttelton Port Company also sponsor two business award events - Canterbury Export Awards and the Champion Canterbury Awards - which acknowledge the impressive and often innovative work done in Canterbury by both large and small companies.

Articles Above: Lyttelton Port Company Advisory Notice | [www.lpc.co.nz](http://www.lpc.co.nz)  
Images: Supplied Lyttelton Port Company | Oxford Bridge: Wikipedia

**Lynnette Baird** Licensed Real Estate Agent  
P: 03 328 7707 M: 021 224 6637

E: [lynnette@realhomes.co.nz](mailto:lynnette@realhomes.co.nz)  
W: [www.realhomes.co.nz](http://www.realhomes.co.nz)



**Professionals**

Kennard Real Estate Limited MREINZ  
[www.kre.co.nz](http://www.kre.co.nz)

# about the lyttelton review

Lyttelton Review is a community newsletter initiative developed by local Professionals real estate agent Lynnette Baird and Lyttelton Harbour Information Centre chairperson Wendy Everingham. The objective of the Lyttelton Review is to help keep local residents informed with what is going on in the wider Lyttelton Harbour community. Each week readers can read about community groups; businesses; events; and everything in between. If you have an event, topic, cause, or other, that you would like to share with the harbour community, then we would love to hear from you. Be heard, be seen, be informed - read it or offer it here.

## 7<sup>TH</sup> Birthday Bash for Lyttelton Farmers Market

Save the Date: Saturday 1 September Celebrations

Saturday 1 September the Lyttelton Farmers Market turns seven. We don't need much of an excuse for a party here in Lyttelton... so that's what we are throwing! From 10am -1pm live bands, competitions, performers and kids' activities will make this a market day to remember.

The fifth birthday celebrations were cancelled due to the first of the Canterbury earthquakes in 2010 and so this year we plan to make up for that in style!

- Devilish Mary, Al Park and Hannah Harding will take to the stage, with other roving performers working their way through the market.
- Thumbs up Puppetry present 2 showings of Peter Rabbit: a half hour performance for two to six year olds.
- Sponsors Crater Rim will be there, and are very generously giving a case of their beautiful wine as a prize for the "on the spot competition".
- New Zealand children's craft and toy company Seedlings are sponsoring a children's colouring competition.
- There will also be a childrens baking competition, and special offers from market vendors, local businesses and more.

All your favourite vendors will be there, as well as some unique visitors. So mark the date in your diary and come to shop, eat and be entertained while you help Lyttelton celebrate seven years of the Lyttelton Farmers Market.

This event is brought to you by Project Lyttelton and generously sponsored by: Crater Rim, The London Street Dairy, Gruff Junction Cheeses, Volcano Markets, Caddie Gardens, The Harbour Co-op, Seedlings, the Lyttelton Time Bank and The Garage Sale.

The Lyttelton Farmers Market is run by Project Lyttelton, a charitable grass roots community organisation whose focus is on creating a sustainable Lyttelton for the future. The market operates from the grounds of Lyttelton Main School every Saturday Morning from 10am until 1pm. If you'd like more information or images, or to schedule an interview with Lottie Harris please phone 03 328 9243 or mobile 021 120 1654 or email [lottie@lyttelton.net.nz](mailto:lottie@lyttelton.net.nz)

## Children's Puppet Show

Help Needed for Farmers Market Celebrations

Thumbs up Puppetry will be putting on two performances of Peter Rabbit for children [preschool to eight] at the Lyttelton Main School, as part of the Lyttelton Farmers Market 7th birthday celebrations. We need a helping hand, to set up the room, to collect a gold coin donation, to help people to find their seats etc. If you love performance/puppetry/children/the Lyttelton Farmers Market and would like to help out from 9.45am to 12.15pm, then please do be in touch with Lottie 328 9243 or [lottie@lyttelton.net.nz](mailto:lottie@lyttelton.net.nz)  
Thanks!

## What's New At the Farmers Market?

**From Ground Gourmet:** Jenny has brought out a delicious Asian-inspired pesto of coriander, fresh ginger and sesame oil.... mmm it has to be tried to be believed! Also from Ground is the Saffron Aioli - Ground's famous Aioli infused with Saffron, a perfect partner with almost any fish.

**From Volcano:** the team has certainly been inspired in the Volcano kitchen recently: chilli marinated Kalamata olives, sweet roasted garlic cloves and incredible fresh mango and paw paw spicy thai salad are three new reasons to visit Volcano's stand next weekend!

## contact the lyttelton review

The team at the Lyttelton Review would love to spread the word about your community group, fundraising efforts, local heroes, business promotions, events and anything else that the local community would like to share. Deadline for any content: Friday before Monday publication date. Phone, Email, or Post: Lyttelton Review, PO Box 94, Lyttelton 8841.

Lynnette Baird	03 328 7707	021 224 6637	lynnette@realhomes.co.nz
Wendy Everingham	03 328 9093	021 047 6144	infocentre@lyttelton.net.nz



### Lyttelton Museum

Update: Building and Collections

Despite losing its museum building, the Lyttelton Museum Historical Society has been very busy over the past twelve months.

Our main focus has been to relocate the museum's collection to a safe temporary storage location. This has been made possible through the actions of many, not

least the Air Force Museum at Wigram and the generous assistance offered by Museum Director, Therese Angelo, and her staff.

As well as securing safe storage for the collection, we have been dealing with insurance claim issues relating to the collection and revitalisation of committee activities, which include meeting each month.

An impressive number of professionals from the museum and arts sector have joined the committee and the matter of strategic planning, including relocation and rebuilding options, is very much at the forefront as the Society looks towards the future.

To date, we have considered at least one mooted relocation option. The old Lyttelton Police Station on Sumner Road has been extensively discussed and existing engineering reports weighed up. Unfortunately, even on favourable purchase terms, the risks and liabilities associated with undertaking such an expensive and ambitious project are too great for a small, volunteer-based society to sensibly accept at this stage.

Our current priorities lie with the preservation, repair, conservation and re-cataloguing of the extensive and valuable collection. Follow our progress on Facebook: <http://www.facebook.com/lytteltonmuseum>

Article: Lyttelton Museum Historical Society | Informal Press Release

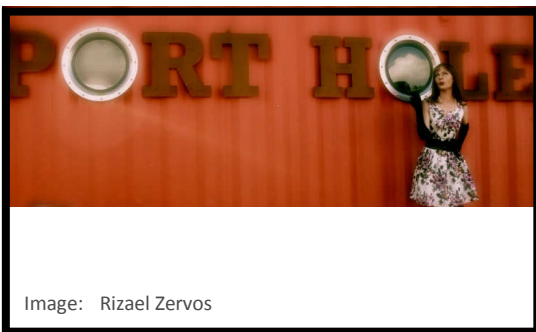


Image: Rizaël Zervos

### Sunday Comedy: Porthole Bar

The Helen Back Experience

It is a Sunday night at the Porthole bar, corner of London and Canterbury Streets, Lyttelton. Enter Helen Back, the self appointed Housewife from Hell,

Born Helen Chrystall in Taihape, and lately washed up on the Lyttelton shore reincarnate in fishnet stockings, red knee high boots, frock a la maid, and little

flashing devil horns picked up on special from the toy section of The Warehouse. Welcome to the first ever comedy night at the Porthole Bar. 'Just close your eyes and hope for the best!' laughs our irrepressible '*Mistress of Ceremonies*'.

Sunday's comedy show is a follow on from her regular monthly gig at the Porthole, *The Hell n' Back Experience*; an eclectic collision of poetry, music, stream-of-consciousness rambling and Helen's own eccentric take on life, love, the universe and all-that-other-stuff, featuring guest artists, open mic and the occasional heckler.

Sunday's comedy session runs with this idea, providing a supportive venue where you can be both entertained and the entertainer. If you think you're up for it contact Helen at 328 7207 or 022 028 7197 and get yourself down to the Porthole for a laugh.

**Sunday Comedy Session, Sunday 12 August at 6-30 pm**

Editor: Please note the previous date advertised as Tuesday 14 August is incorrect. The Sunday Comedy Session will in fact be held on Sunday 12 August! Our apologies for any confusion here.

## subscribe to the lyttelton review

The Lyttelton Review is published every Monday and can be delivered straight to your email inbox. Just send an email with the words "subscribe me" in the subject line, then sit back and wait for the next instalment of local news, events and reviews. If you do not have access to email, but would like read about our local events, Professional Real Estate print hard copies that are available from Thursdays at the Lyttelton Club; Samo Coffee, Fisherman's Wharf or the Lyttelton Harbour Information Centre on London Street. Or a copy can be delivered to your door, if you live in within the Lyttelton township: Contact Lynnette on 03 328 7707.

## Storm Hairdressing

Stylist Wanted

Sally from Storm Hairdressing is looking for an experienced stylist to help out at her busy London Street salon. Hours and pay are negotiable. Please contact Sally on 03 328 8859 or call in for a chat.

## Ground Gourmet Cooking Classes

Tempting New Classes Released

Jenny from Ground Gourmet has just finalised dates and themes for the next round of cooking classes:

Wednesday 15 August	Spice up your Winter- using spices to easily create an exotic winter feast
Wednesday 12 September	Malaysian Delights- a melting pot of cuisines resulting in unusual flavours and techniques
Wednesday 3 October	Sri Lankan Cooking- dishes from this unique and tasty cuisine

All the classes are still only \$70.00 a head and still start at 7.00pm at the Naval Point Club. Of course let Jenny know as soon as possible if you would like to book a class, as space is limited and these classes book out super fast!

Ground Gourmet: Jenny 022 476 8633     [jenny@ground.co.nz](mailto:jenny@ground.co.nz)

## Winter Warmers

For Those in Need

Community House have been gifted three different items for residents of Lyttelton who are struggling to keep warm:

- Red Cross Winter Warmer packs containing hot water bottles, a beanie/scarf/gloves tea, coffee, a thermos mug, etc
- Handmade knitted woollen blankets, socks, scarves beanies made by a group in Blenheim,
- Salvation Army have donated 19 oil-free column heaters to Community House for members of the community in need.

Perhaps you might fall into this category, if so don't be afraid to get in touch with the friendly team at Lyttelton Community House. Perhaps you know of a friend or neighbour who might really benefit from one or all of the above? Help us be the ears and eyes we can't always be. Want to let people know they don't need to suffer the cold in silence.

These items are for Lyttelton and we can't store them in our office for too long! We want to see them reach the right people. Contact the friendly team at Lyttelton Community House on 03 741 1427.

Article: Lyttelton Time Bank Notice

## Rumour Has It

Despite the best endeavours, the owner of Shadbolt House has confirmed that the building on Norwich Quay cannot be saved as the cost for repairs to bring the building up to standard is more expensive than the demolition and rebuilding process. Volcano Radio were given a small window of opportunity to extract what belongings they could over the weekend. The Lyttelton Review has not heard of demolition date, but if you can enlighten us, we would love to receive your call: 03 328 7707.

## Feeling Nostalgic

If you miss looking at Lyttelton's beautiful old buildings, head on line to [www.maps.google.co.nz](http://www.maps.google.co.nz) and zoom in on Lyttelton, until the street view option appears on screen. You can click you way along the streets admiring what use to be. Recommended for those with brave hearts only.



## what did you hear

Here at the Lyttelton Review we love receiving your stories and notices about events. Keeping it local and keeping it relevant has resulted in the growth of the Lyttelton Review. One page at a time we are all working together to help connect residents around the Lyttelton Harbour. We couldn't produce the Lyttelton Review each week with your contribution. So here's a big Thank You from the editorial team to everyone who receives and continues to contribute to the success of the Lyttelton Review - your views, ideas and stories are appreciated and always welcomed.

### Knit 'n' Yarn

Knit 'n' Yarn at the Lyttelton Library. Drop into the library on Wednesday mornings, 10.00am to 12noon for a dose of social crafting. Bring your knitting, crochet or any other portable craft project. Meet new friends, and yarn the morning away.

### Project Lyttelton

Did you know that Project Lyttelton is a membership based organisation? Membership is \$10.00 per person or \$15.00 per family. Memberships are now due, so this is a reminder for current members to re-join, or an invitation for new people to join. Memberships can be paid by dropping into the Project Lyttelton office during office hours, or contacting Sue-Ellen Sandilands for a form and payment details. Phone 328 9243 or email [office@lyttelton.net.nz](mailto:office@lyttelton.net.nz)

### Lyttelton Master Plan

Copies of the Lyttelton Master Plan, as adopted by council on June 21 2012, are available to the public. Information is available online at [www.ccc.govt.nz/suburban-centres](http://www.ccc.govt.nz/suburban-centres) or at any open Council library or service centre. Hard copies are also available at:

- Lyttelton Harbour Information Centre, 65 London Street
- Lyttelton Club [the Top Club], 23 Dublin Street
- Naval Point Club, Naval Point
- Chalfont Cafe Diamond Harbour Country Store, Waipapa Avenue, Diamond Harbour

### Draft Christchurch Transport Plan

There is a drop in session to discuss the Draft Christchurch Transport Plan on Tuesday August 7th between 5.00pm and 7.00pm at the Lyttelton Club, 23 Dublin Street, Lyttelton.

### Need a Babysitter or Cleaner?

Hello, my name is Mathilde, I am 26 and French. I have experience, am reliable, friendly and can work flexible hours. Call me on 022 190 3710.

### New Home for Lyttelton BNZ

Monday July 30 was a significant date for the staff at BNZ Lyttelton. The Port-A-Com left town and we have a lovely new bank at 56 London Street. Cup cakes for customers and staff marked the return of a 24 hour automatic teller machine and full banking services for Lyttelton.



# pass it on, spread the word

Not everyone receives these news letters, so please pass them onto anyone you think would be interested. We can also arrange printed copies for interested parties - just let us know. A big thank you to everyone who emails us with what is happening in their part of Lyttelton Harbour paradise. If you have news, or belong to a community group, own a business - get in contact with us, we would love to promote or share your story with the Lyttelton Harbour district. Errors, Omissions and Typos are all part and parcel of a volunteer service. These quirky additions are offered free for your amusement. But, if we have "got it wrong" - please just let us know.

## SCIRT: Retaining Wall Repairs

Canterbury and Ripon Streets

SCIRT are continuing work on Canterbury Street, and starting works on Ripon Street repairing and replacing the damaged retaining walls. The works on Ripon Street will start on 30 July. Works on Canterbury Street and Ripon Streets will be completed mid-October 2012.

### Rubbish Bins

For residents within the road closure please have your rubbish and recycling bins out by 7.00 am on Thursdays. SCIRT will then move them to a suitable collection point and bring them back to your gate. Please ensure that they are labelled with your address so your bins will be returned to you.

### Upper Ripon Street Road Closure:

From 30 July, between numbers 18 and 28 a full road closure will be in place for safety reasons. No vehicular access will be provided day or night. The works will be starting below number 28 and will be moving down hill towards Oxford Street. Suggested parking areas are shown on the map in green.

### Lower Ripon Street Road Closure:

During construction hours, the road will be closed. After 6.00 pm we will reduce our worksite fencing as far as possible to allow resident access and parking. The worksite area will remain closed to residents for the duration of construction but its location will re-locate depending on where the work is focused. Areas where parking is limited must be clear of vehicles by 7.00 am each morning [marked in pink on the map].

### Upper Canterbury Street Road Closure:

Lane widths are reduced in the area where a safety zone has been established above the wall. There is a section of suggested parking from numbers 46 to 48 as shown in green on the map. There is an area of no parking between numbers 50 Canterbury Street to 60 Canterbury Street.

### Lower Canterbury Street Road Closure:

The road is closed between numbers 51 and 77. During construction hours, the road will be closed. After 6.00pm, we will reduce our worksite fencing as far as possible to allow access and parking for residents. Limited parking is available between numbers 51 and 59, however please ensure that you park within the orange lines to ensure that trucks can get past.





# c'mon get involved

Lyttelton is known for its culture of volunteer activity and community participation. If you have ever had the thought that you would like to be more involved in the local community, but you are not sure where to go, or who to talk to? Start by having a conversation with the team at the Lyttelton Harbour Information Centre, as they can give you some advice on the many types of great volunteer organisations here in Lyttelton. If you are passionate about elderly care, sustainability, youth culture, harbour activities, heritage, radio, business development, fundraising, or just about anything - then there is a group who would love for you to be involved!

## Harbour Co-Op

August is Kiwiherb Month

With Winter well and truly set in, now is a perfect time to showcase one of our favourite companies, Kiwiherb. Kiwiherb make premium quality therapeutic herbal medicines for all ages, right here in Aotearoa. They are committed to using New Zealand grown, organically grown herbs in their formulas, and much of the range is Bio-Gro certified or contains certified organic herbs. Not only are the medicines 100% natural, they are developed by experienced medical herbalists to be extremely effective.

Kiwiherb are keen to support The Harbour Co-op, and have generously offered us some super specials for the entire month of August. All Kiwiherb Echinature, Winterguard, De-Stuff, Herbal Throat Spray, and other selected items are a huge 20% off, and all Kiwiherb products purchased put you in the draw to win a lovely mega prize pack of Kiwiherb Goodies valued at \$200! See in-store for more details.

Medical Herbalist Asti Renaut will also be here in the shop on Friday 10 August from 1.00pm to provide tastings of the Kiwiherb formulas and offer any advice you might need about your health concerns and winter ailments.

## World Organics

Keeping it Green from Seed to Shelf

At World Organic we are committed to a green, sustainable business model. From the moment a seed is planted to the time one of our products is placed on your bathroom shelf, we adhere to processes which are ecologically sound and which keep our environmental footprint to a minimum. Our products have been certified organic and are manufactured in accordance with strict environmental and ethical practices, using the cleanest, most advanced technology available. All of the ingredients we use are clearly listed in our packaging and more than 99% of them are of natural origin. All of this allows us to champion our products with a clear conscience, safe in the knowledge that we are doing the right thing by the planet.

Winter has come knocking at our doorstep and brought with it the usual challenges – frosted car windows; dirt deposited through the house by muddy shoes; leaves strewn across wind swept lawns; and a sudden and paralysing reluctance to leave the warmth of our beds in the morning. We've all experienced the vagaries of winter and we all need to be aware of the detrimental effect it can have on our skin. The skin is the largest organ in the body and is therefore susceptible to environmental hazards, amongst which winter must be numbered.

Every time we step outside in the winter, our skin comes under stress. Inevitably, we will dress to keep warm, wearing additional layers of clothing which will hamper the skin's ability to breathe properly. At the same time, winter's low humidity and strong, cold breezes will cause our skin to lose moisture and become abnormally dry. And we can't escape these problems, even if we bunker down inside! You see, our cosy heated homes and offices pull moisture from the air and only add to the stress our skin is experiencing. The result can be flaky, scaly winter skin, susceptible to cracking and infection.

Let the World Organic intensely rejuvenating and replenishing night moisturiser nourish your skin while you sleep. For more details contact:

**Nicky Bishop**

**World Organics Skincare - Lyttelton**

**Phone: 03 328 7446 or 027 423 9455**



# lyttelton harbour network

For news, events, and what is open or closed around the Harbour Basin, don't forget to visit:

Diamond Harbour Information

[www.diamondharbour.info](http://www.diamondharbour.info)

Governors Bay Information

[www.governorsbay.net.nz](http://www.governorsbay.net.nz)

## Display Boards

Free to Community Group

Cynthia van de Loo, local artist and photographer, wrote to the Lyttelton Review to advise that about a year or more ago she picked up a whole lot of display boards that she thought would be a good community asset. Originally these boards were stored at a friends garage, and then with Trent from Harbour Arts, but now they are needing to be moved this week as the space they are in is no longer available.

It would be great if these boards could be stored somewhere in Lyttelton, so that community groups or organisations could access them from time to time. Does anyone have any storage space? Or, is there a community group willing to take ownership of these boards, and who has some storage available? If you can help, or need to know the size of these first, please contact Cynthia on 207 201 3394 or 328 9547. If a new home cannot be found by the end of the week, they will unfortunately end up in the recycling.

## LIFT Library: Film Evenings Return

There's so much to think about these days, with Project Lyttelton and Harbour Food Resilience Project visioning meetings, and discussions on starting an alternative currency, all raising many possibilities. These topics will determine the films shown at the LIFT Film Evenings, starting up again at the Portal, on Wednesday August 8<sup>th</sup> after a short winter break. The Portal is now insulated and very warm! Join us for a potluck dinner at 6.30 if you like; the film showing starts at 7.15, and we shall discuss what we see. We will be looking at financial issues this time, especially the use of alternative currencies.

Article: LIFT Library

## LIFT Library

It's August already! Roll on springtime weather! I only managed one hour at the Petanque Court this Wednesday, as the wind got too cold and too strong. Better luck next week. The topics being discussed in this community are very much to the fore in some reading I've been doing, with all the new materials having arrived from Sustainable Otautahi Christchurch. Although some are rather dated they are still very relevant:

For example, a 1999 issue of the magazine '**The Ecologist: Beyond the monoculture: shifting from global to local**', has masses of fascinating and well-written articles [for the ordinary reader, not economists, etc] many of which are highly relevant to developments here. I think this edition was aimed at helping the world to appreciate the events that were building: The Global Carnival Against Capital took place on Friday, 18th June, 1999. It was an international day of protest timed to coincide with the 25th G8 Summit in Cologne, Germany, where globalization's negative effects were the apparent theme.

Then a 2009 issue of '**Yes Magazine**' also focuses on developing the local economy, rather than relying on the global one, with really practical articles on that subject, most of them relevant to ideas being discussed here in Lyttelton.

There are several other magazines that I'm skimming through, too, such as '**Permaculture Magazine**', from the UK, but with masses of international articles, very practical in nature. And then there's '**Solutions: for a sustainable and desirable future**', American but with international articles of great interest.

So if you don't feel like taking on a heavy book, try some of these quicker reads, very enlightening and helpful in improving our situation.

To become a member of the LIFT Library, based right here in Lyttelton, contact Juliet Adams on 03 328 8139 or mobile 021 899 404, for more information. And if you are already a member, and these books appeal to you, remember Juliet offers a complimentary pickup and delivery service to the Lyttelton Harbour Information Centre, or the Project Lyttelton office, if you are unable to make it over to the LIFT Library in Voelas Road.

Article: LIFT Library

# looking for reading material

A book swap has been operating from the Lyttelton Harbour Information Centre for some time. Thank you to all the lovely residents who keep dropping books in. This service is available to all local residents, simply just pop in, choose a book, and then return it or another when you are finished. Borrow or swap - it's your call. If you are looking for reading material on economics, the transition movement, sustainability, alternative currencies and community development then check out the LIFT Library that has recently started. Contact Juliet Adams on 328 8139 for more information.

## Red Cross

### Canterbury Earthquakes Recovery Update

The New Zealand Red Cross have published their July 2012 update. Over 24 pages the recovery update summarises work in Christchurch and across the country including distribution of grants, outreach programmes, 22 February anniversary and our work with Australian Red Cross. It reports on the grants paid out, information on some of the beneficiaries, and gives a full accounting of money received and how it has been used. You can read the report by visiting: [www.redcross.org.nz](http://www.redcross.org.nz)

Article: <http://avonsidechch.blogspot.co.nz/>

## EQC - Retaining Wall Update

More than twelve months ago, the Lyttelton Harbour Information Centre and Professionals Real Estate hosted a seminar on retaining wall damage, ownership and insurance coverage. It is heartening to see the Earthquake Commission have now, in plain English, outlined their obligations under the Earthquake Commission Act.

The Earthquake Commission provides indemnity cover for retaining walls and not replacement cover. This means they will pay out the value of the wall when it was damaged, not the cost of building a brand new retaining wall.

The value is determined by working out its replacement value and making deductions to take account of its age and pre-quake condition. For instance, a retaining wall that is halfway through its useful life will have 50 percent of its replacement value deducted, to determine its indemnity value.

Very old retaining walls will still retain a residual value, usually about 25 percent, so in most circumstances, the homeowner will get some cover for their earthquake-damaged retaining wall.

Where a retaining wall failure leads to land loss, the land damage settlement also includes the value of that loss, so in some circumstances the total settlement [land damage plus retaining wall damage] can be sufficient to replace a retaining wall.

Note though that retaining walls that serve a landscaping function, rather than supporting or protecting your house, insured land or main access way, are not covered by the Earthquake Commission. Neither are council-owned retaining walls [the Stronger Christchurch Infrastructure Repair Team Programme is repairing these].

Some insurance companies provide top-up cover for retaining walls – so it pays to check your policy.

Claims for insured retaining walls that form the boundary between two [or more] properties, will be shared between those properties.

Article: [www.eqc.govt.nz](http://www.eqc.govt.nz)

## EQC Establishes Independent Mediation Scheme

Earthquake Commission [EQC] customers will have access to an independent mediation service under an agreement with the Arbitrators' and Mediators' Institute of New Zealand.

The decision to establish an independent mediation service recognised that there were times when there could be significant differences in perspective between customers and EQC that were best resolved with the help of someone who had no personal bias.

The aim is to provide the opportunity to look afresh with the help of a totally independent mediator who has no predetermined view. The mediation scheme will be operational in August 2012. <http://canterbury.eqc.govt.nz/news/release/2012>



# “c'mon get involved”

August 2012

## Lyttelton Harbour

### Community Garage Sale

All donations of good used, or new, household items greatly accepted at Project Lyttelton 54a Oxford Street. Please do not donate items that cannot be sold, as this increases our costs trying to take unwanted items to the charity barn, or worse still the rubbish depot.

### Lyttelton Community Association

New members welcome. As an issues based organisation, we do not hold regular meetings. If you would like to be advised of when the next meeting will be held, or have an issue to discuss, please email us at [LCAssn@vodafone.co.nz](mailto:LCAssn@vodafone.co.nz) or phone Ken Maynard 03 328 9553.

### Lyttelton Community House

Meals for the elderly continue to be prepared and delivered daily. If you know of any elderly residents who need this service, or would like to volunteer to assist, please contact Christine or Courtenay 03 741 1427.

### Lyttelton Harbour Basin COMMUNITY Civil Defence

New members welcome. Meet second Monday of every month, 7.00pm St Johns Ambulance Station, London Street. To become involved contact the Area Co-ordinator Julie Lee on 03 328 7779 or 027 739 1832.

### Lyttelton Harbour Business Association

For more details visit: [www.lytteltonharbour.co.nz](http://www.lytteltonharbour.co.nz)

### Lyttelton Harbour Information Centre

Monday to Friday 11.00am to 3.00pm; Saturday 10.00am to 1.00pm; Sunday 11.00am - 2.00pm.

### Lyttelton Harbour/Whakaraupo Issues Group

New members welcome. Initiatives and successes for improving the harbour environment and water quality continue. Main group meetings are six times a year. Contact Claire Findlay 03 328 8930 or Melanie Dixon 03 329 9908.

### Lyttelton Lions

Meet on the 2nd Tuesday of each month at Community House at 7.30pm. Anyone interested in becoming involved, or anyone who would like to learn more about this organisation, is most welcome. Contact Mary Jamieson 03 328 8523.

### Lyttelton Historical Museum Society

Lyttelton Museum committee is developing a concept plan for the re-building of Lyttelton Museum. Meetings held once a month. New members, donations or any other support is welcomed. Lyttelton Museum, PO Box 95, Lyttelton. 328 8972 [lytteltonmuseum@xtra.co.nz](mailto:lytteltonmuseum@xtra.co.nz)

### Lyttelton Reserves Management Committee

Reserves Committee meets on a regular basis to make decisions about the management of the reserves. It organises weed control and planting programmes that include public and schools planting days. To be involved email the group at [reserves@lyttelton.net.nz](mailto:reserves@lyttelton.net.nz).

### Lyttelton Time Bank

Either Bettina, Lisa or Lottie will be at the Lyttelton Harbour Information Centre every Tuesday, Wednesday, Thursday, and Friday 9.00am to 11.00am. Phone: 021 806 406 or email the team at [timebank@lyttelton.net.nz](mailto:timebank@lyttelton.net.nz)

### Lyttelton Youth Centre

Youth Centre/Community House, 7 Dublin Street, Lyttelton. Contact Christine 03 741 1427 for further details.

### Plunket Playgroup

The Plunket Playgroup can be found at Lyttelton Main School, every Monday and Wednesday, 10.00am to 12noon. 50 cents donation and everyone is welcome. Contact Lisa York-Jones 03 328 8918 for more information.

### Project Lyttelton

The Portal, 54a Oxford Street, Lyttelton [located behind the Swimming Pool]. Office 03 328 9243.

### Toy Library

With the closure of the Lyttelton Recreation Centre, please contact Roz Jenkins 03 328 8552 for further information.

### Volcano Radio

Currently - Off Air. Fundraising t-shirts available from Portico, 48 London Street.

# “business directory”

support our local businesses

August 2012

## Lyttelton

Abbraccia Bellydance	41 Voelas Road [West School]	03 328 8883	Paige 021 999 848
Acupuncture Therapy	18 Oxford Street	03 328 9053	Robin Kerr
Alexander Technique	Private Address	03 328 8968	Belinda Walker
Bank of New Zealand	56 London Street	0800 80 04 68	Trish, Kelly, Donna
Banks Peninsula Accounting	PO Box 83, Lyttelton	03 328 7231	Chris 021 280 0086
Beauty by Carly	Private Address	Private No.	Carly 021 294 5676
Bells Pharmacy	50 London Street	03 328 8314	
Choice Take Home Dinners	20 London Street	03 328 8784	Available 5.00 - 6.00pm
Christchurch Council Service Centre	35 London Street	03 941 8999	Debbie/Patricia
Christchurch Yoga	Private Address	03 328 8889	Rebecca 021 071 0336
Coastal Living / Picture Framers	34 London Street	03 328 7350	
Coffee Culture	18 London Street	03 328 7080	
Dandy Designs - Web Business Develop	Private Address	03 328 8646	dana@dandydesigns.co.nz
Diamond Harbour Ferry	B Jetty, Lyttelton Wharf	03 328 9078	
Dockside Apartments	22 Sumner Road	03 325 5707	Grant / Kathy
Fishermans Wharf	39 Norwich Quay	03 328 7530	
Freemans Restaurant	47 London Street	03 328 7517	
Frog Web Works	14 Winchester Street	Private No.	Graeme 027 473 5018
Four Seas Restaurant	23 Dublin Street	03 328 8740	
Ground   Gourmet Foods, Catering	Lyttelton Farmers Market	Private No.	Jenny 022 476 8633
Harbour Co-Op	12 London Street	03 328 8544	
Hands on Health   Nutrition Massage	Private Address	Private No.	Rebecca 027 494 6349
Himalaya Design	20 London Street	03 328 7600	Wed-Sun 10.00am - 4.00pm
It's Indi	2 London Street	03 328 8185	
Jack Tar Sailing	West Side, No.7 Wharf	03 389 9259	Mike Rossouw
London Fish and Chips	34 London Street	03 328 8819	
London Street Books	48 London Street	03 328 8088	Thurs-Sun
London Street Dairy	34 London Street	03 328 7358	Open 7 Days
Leslies Bookshop	18 Oxford Street	03 328 8292	
Lyttel Beauty	32 Voelas Road	03 328 7093	www.lyttelbeauty.co.nz
Lyttelton Bakery	34 Norwich Quay	03 328 9004	
Lyttelton Builders Limited - Office and Yard	16 Canterbury Street	03 328 9305	Peter Tocker 021 862 537
Lyttelton Harbour Information Centre	65 London Street	03 328 9093	
Lyttelton Library	35 London Street	03 941 7923	
Lyttelton Health Centre	18 Oxford Street	03 328 7309	
Lyttelton Physiotherapy	18 Oxford Street	03 328 8111	
Lyttelton Recreation Centre	25 Winchester Street	03 941 5656	
Lyttelton Sea Foods	26 Norwich Quay	03 328 7628	
Lyttelton Service Station	1 Canterbury Street	03 328 8749	
Lyttelton Shuttle	Airport, Tours, Anywhere	Private No.	Linda 021 254 4986
Lyttelton 'Top' Club	23 Dublin Street	03 328 8740	

.../ Continued

# “business directory”

support our local businesses

August 2012

## Lyttelton [continued]

Mac Todd Solicitors	50 London Street	03 328 9992	Ray Blake 021 43 66 50
Min Sarginson Real Estate	53 London Street	03 328 7273	
Mondo Vino	42 Norwich Quay	03 328 7744	
PedalOn Bicycle Service	2 Exeter Street	03 328 9246	021 055 6865
Port Electric	Private Address	03 328 8099	Ken 021 117 6848
Port Hills Auto Centre	42a Norwich Quay	03 328 9980	
Porthole Bar	40 London Street	Private No.	Mike 021 328 977 [Tue-Sun]
Portico	48 London Street	03 328 8088	Tue-Sun 10am - 4pm
Professionals Real Estate	36 London Street	03 328 7707	Lynnette 021 224 6637
Project Lyttelton Office	54a Oxford Street	03 328 9243	Sue-Ellen
Pynenburg and Collins   Architects	PO Box 80, Lyttelton	Private No.	Simon 021 163 7193
Ray White Real Estate	47 London Street	03 331 6757	Marie   Daisy
Roots	Private Address	Private No.	Christy   Guilio 021 120 8083
Rossouw Window Cleaning	Private Address	03 389 9259	Mike 0274 355 239
SAMO Coffee	3 Canterbury Street	Private No.	Open 7 Days
Sno Clothes and Milly May	8a London Street	03 328 8584	Heather
Special Branch NZ   Arborist	Private Address	Private No.	Tim 022 091 9202
Storm Hairdressing	34 London Street	03 328 8859	Sally
The Rookery	Ross Terrace	03 328 8038	Angus   Rene
Time to Resolve   Mediation Service	Private Address	03 328 8219	Chantal 022 618 8532
View Hairdressing	Private Address	Private No.	Megan 027 488 5173
Volcano Radio	Private Address	03 328 8566	
World Organics Skincare	Private Address	03 328 7446	Nicki 027 423 9455

## Diamond Harbour

Bronwen Jones– Writing and PR Services	Rawhiti Street	03 329 4303	<a href="http://www.bronwen-jones.com">www.bronwen-jones.com</a>
Chalfont Cafe   D.Harbour Country Store	2 Waipapa Avenue	03 329 4854	Open 7 Days till 5.30pm
Diamond Harbour Ferry	Waipapa Avenue	03 328 9078	
Diamond Harbour Medical Centre	2a Waipapa Avenue	03 329 4402	
Orton Bradley Park	Marine Drive	03 329 4730	
Snowdrop Cottage Children's Store	Waipapa Avenue	03 329 4464	Open 7 Days 9.00am - 5.00pm
Shunyata Retreat   Day Spa	10 Rawhiti Street	03 329 4773	Contact Paru
Thrive: Chiropractic, Acupuncture, Nutrition	Private Address	03 329 3254	Mark and Lou Warren

For news, events, and what is open or closed in Diamond Harbour, visit: [www.diamondharbour.info](http://www.diamondharbour.info)

## Governors Bay

At Home Childcare Limited	18 Bay Heights	03 329 9970	Neave Ross-Wallace
Governors Bay Hotel	52 Main Road	03 329 9433	
She Chocolat	79 Main Road	03 329 9825	
Living Springs	Bamfords Road	03 329 9788	

For news, events, and what is open or closed in Governors Bay, visit: [www.governorsbay.net.nz](http://www.governorsbay.net.nz)



# “accommodation”

places to stay around the harbour

August 2012

## Lyttelton

- **Dockside Apartments.** Three private apartments enjoying harbour views, now open and available for casual holiday or short term occupancy. Scenic and so close to London Street, this is an ideal option for friends or family to stay. Options range from studio; one bedroom or two bedroom apartment. Tariff from \$90 - \$120 per night. Phone Grant or Kathy on 03 325 5707 or view more details online [www.dockside.co.nz](http://www.dockside.co.nz).
- **No.1 Apartment.** Warm two bedroom apartment with magnificent harbour views available for holiday or short term accommodation. Undercover parking. Tariff \$120 per night with minimum three night stay. Longer rates available on enquiry. Phone Linda 03 328 9128 or 021 254 4986.
- **Randolph Apartment.** Private two bedroom modern apartment with superb views across Lyttelton and inner harbour is now available for holiday or short term accommodation. Apartment features private spa, bar-b-que area, off street parking for one vehicle, and all the mod-cons including WIFI and MySky television. Tariff from \$120.00 per day, with minimum three night stay. Longer term rates available. Phone Heather 03 328 8585 or 03 328 8584.
- **The Rookery.** Built in 1866 The Rookery Bed and Breakfast is one of the oldest surviving local cottages, with wonderful panoramic views of the historic port town of Lyttelton, the main harbour, Quail Island, surrounding hills and volcanic cliffs. Three beautifully renovated rooms are available; one with ensuite facilities. Tariff from \$115 - \$160 per night. Phone Angus or Rene Macpherson on 03 328 8038 or view more details on line [www.therookery.co.nz](http://www.therookery.co.nz).

## Diamond Harbour

- **Diamond Harbour Lodge** is the perfect place to relax, enjoy and unwind. Offering harbour sea views, spacious rooms, TV/DVD, CD player, large selection of books, board games, free wireless internet, fridge, toaster, jug, microwave, sink, selection of tea, complimentary cookies, electric blankets, underfloor heating in bathroom, heated towel rail, linden leaves toiletries, towelling bath robes. Robyn and Pete Hedges 3 329 4005 or visit [www.diamondharbourlodge.co.nz](http://www.diamondharbourlodge.co.nz)
- **Manaaki Eco Farmstay Purau** offers self contained ensuite accommodation. One or two bedrooms with spacious fully equipped kitchen/living in a beautiful rural setting overlooking Purau Bay. Holiday (min 2 nights) or longer term rates available. Contact Wendy ph 329 3202 or view us online [www.ecofarmstaypurau.co.nz](http://www.ecofarmstaypurau.co.nz)
- **Mt Evans Bed and Breakfast** offers accommodation in two self contained cottages. Quiet rural setting only 500m from the beach. For further information contact Pauline 03 329 4414 or visit [www.mtevansbnb.co.nz](http://www.mtevansbnb.co.nz)
- **The Old Exchange Bed and Breakfast** right in the heart of the Village at 2 Waipapa Avenue. Two queen sized bedrooms with ensuite bathrooms, own private entrance, sea views and within walking distance of the Ferry. Contact Jill 03 329 4275 or 027 482 6014.
- **Orton Bradley Park** offer self contained camper van sites for overnight stays. Services include 15 powered sites; treated drinking water; toilet blocks and dump site, with the golf club and tennis court next door. Fees start from \$15.00 per night for two persons, with additional adults at \$6.00 per night. Contact 03 329 4730.

## Governors Bay

- **Governors Bay Bed and Breakfast** offers a place to relax and rejuvenate on nine acres to bush side paradise beside the harbour. Enjoy breakfast on the deck while listening to the native bird song. Furnished room with ensuite bathroom and separate sitting area also available for short term rent for those seeking emergency accommodation. For more details contact Eva on 03 329 9727, or view on line [www.gbbbedandbreakfast.co.nz](http://www.gbbbedandbreakfast.co.nz).
- **Governors Bay Hotel** has been restored to it's former glory and offers six guest rooms located on the first floor level. All rooms recently renovated with 32 inch flat screen televisions, queen size beds, free wifi broadband, heaters, electric blankets and vanities. Four of the rooms have direct verandah access through French doors opening out onto a balcony with wonderful views over the Lyttelton harbour. Contact the Governors Bay Hotel on 03 329 9433 or view more details on line: [www.governorsbayhotel.co.nz](http://www.governorsbayhotel.co.nz).
- **Living Springs** offer an array of accommodation options from fully service private rooms, studios, twin rooms, shared bunkrooms to outdoor camping. Also available are some powered caravan sites. All rooms are clean, comfortable and well maintained for your relaxation. Contact Living Springs on 03 329 9788 or view more details on line: [www.livingsprings.co.nz](http://www.livingsprings.co.nz).

# “harbourvibe”

what's on around the harbour this week

August 2012

## 06 Monday

## 07 Tuesday

Community House Lunch	12.00pm	Upstairs: 7 Dublin Street	Everyone welcome, meet new friends
Lyttelton St John Youth Division	6.00pm	St John Ambulance Station	Training Room   New Members Welcome
Tuesday Night Live Music	7.30pm	Wunderbar, London Street	Open Mic Night   Musicians Showcase

## 08 Wednesday

Knit 'n' Yarn Group	10.00am	Lyttelton Library, London St	Knit, Crochet or Bring Another Hand Craft
Community Garden	10.00am	The Portal, 54a Oxford Street	Shared lunch from 12.00pm
Plenty to Share	3.00pm	Cnr London and Canterbury	Bring, Exchange and Share Food
Naval Point Quiz Night Series	6.30pm	Naval Point Club	Book 03 328 7029   \$30 Team of Six
LIFT Library - Pot Luck Dinner	6.30pm	The Portal, 54a Oxford Street	Shared Pot Luck Dinner Before Film
LIFT Library - Film Evening	7.15pm	The Portal, 54a Oxford Street	Thought Provoking Film Series
Marlon Williams Live Music	8.00pm	Porthole Bar, London Street	Live Music Wednesday   Free

## 09 Thursday

LMH Community Board	5.00pm	Lyttelton Library, London Street	General Chat and Meet   All Welcome
Contra Dance Night	7.30pm	Private Address, Cass Bay	Contact Bill 03 328 8985   \$5
Al Park Live Music Thursday	8.00pm	Porthole Bar, London Street	Live Music Thursday   Free

## 10 Friday

Senior Exercise Class	10.30am	Lyttelton Main School Hall	All welcome. \$5.00 per session
Medical Herbalist Asti Renaut	1.00pm	Harbour Co-Op, London Street	KiwiHerb Tastings and Advice

## 11 Saturday

Lyttelton Farmers Market	10.00am	Lyttelton Main School	Fresh produce direct to you
Lyttelton Garage Sale	10.00am	The Portal, Oxford Street	Second Hand Bargains and More
Grassy Market	10.00am	The Grassy, Oxford Street	Art, Craft and Bric-a-Brac

## 12 Sunday

Combined Church Service	10.00am	St Josephs Community Centre	21 Exeter Street   All welcome
Live Jazz Sundays	3.00pm	Freemans, London Street	Carmel Courtney Live   Free
Sunday Night Live Music	6.00pm	Lyttelton Club, Dublin Street	Featuring Great Local Music   Free
Sunday Comedy Session	6.30pm	Porthole Bar, London Street	Live Local Comedy and Entertainment   Free

Lyttelton Review is proudly sponsored by  
Lynnette Baird - Lyttelton's resident Professionals Real Estate Agent



Lynnette Baird | Licensed Real Estate Agent  
P: 03 328 7707 M: 021 224 6637  
E: [lynnette@realhomes.co.nz](mailto:lynnette@realhomes.co.nz)  
W: [www.realthomes.co.nz](http://www.realthomes.co.nz)



Professionals  
Kennard Real Estate Limited MREINZ  
[www.kre.co.nz](http://www.kre.co.nz)