

“lyttelton review”

lyttelton harbour community update

www.lytteltonharbour.info

02 July 2012
E46

One Year On and Growing Every Day

Lyttelton Review Celebrates Milestone

The Lyttelton Review is an example of how determination, combined skills, a common goal, one chance meeting, and a shoe string budget can deliver news and connect a community, not only week after week - but for more than twelve months now.

For the Lyttelton Review team, it has been an amazing journey of editorial discovery and difficult to believe twelve months have passed since the launch of the Lyttelton Review on 27 June 2011.

So, where did it all begin? Quite literally the Lyttelton Review is an initiative developed following the earthquakes and an acknowledgement that local resident's wanted more information about what was happening both within Lyttelton and across the harbour region. Not just earthquake related information, but broader everyday events too.

Following the September 2010 and February 2011 earthquakes the Lyttelton Harbour Information Centre and the Lyttelton TimeBank worked side by side assisting local residents. During this period the Lyttelton TimeBank broadcasts were supplemented with general information from Wendy Everingham at the Information Centre. Up until this time the Information Centre only produced information for visitors, but there was the realisation that the Lyttelton community information networks needed to broaden.

This desire was most apparent after the February earthquake when during the first public meeting hosted by the Lyttelton Mt Herbert Community Board residents were vocal about the need for information to be shared and readily available. It was at this meeting that local real estate agent Lynnette Baird formed the idea of producing a regular e-newsletter, based on information from the local community groups, council and word on the street. Connecting people was more important than ever before, and relevant local information needed to be sent quickly and easily to large numbers of people.

A few weeks later and a chance meeting connected Lynnette Baird and Wendy Everingham. The rest they say is history now, as both Lynnette and Wendy were keen to investigate the potential for Professionals Real Estate to develop a unique sponsoring relationship with the Lyttelton Harbour Information Centre. Combining Lynnette's admired publishing and marketing skills with Wendy's significant community networks, the determination and combination of skills has proven to be a recipe of success.

And while both these girls acknowledge they are not journalists, it certainly hasn't stopped this dynamic duo from giving it their best shot with the Lyttelton Review developing in leaps and bounds. From an initial data base of 80 subscribers, the Lyttelton Review is now emailed every week to well over 800 people, mostly from around the harbour basin - so it can be said the Lyttelton Review truly is a local news source.

.../ 2



about the lyttelton review

Lyttelton Review is a community newsletter initiative developed by local Professionals real estate agent Lynnette Baird and Lyttelton Harbour Information Centre chairperson Wendy Everingham. The objective of the Lyttelton Review is to help keep local residents informed with what is going on in the wider Lyttelton Harbour community. Each week readers can read about community groups; businesses; events; and everything in between. If you have an event, topic, cause, or other, that you would like to share with the harbour community, then we would love to hear from you. Be heard, be seen, be informed - read it or offer it here.

Lyttelton Review: One Year On

Success Comes Down to Community

Looking back over the year Wendy and Lynette agree this has been such a significant partnership. Firstly in terms of friendship; secondly, creating a new community information role for the Lyttelton Harbour Information Centre; thirdly, the security of independent business funding through the sponsorship arrangement; and lastly, but more importantly, as a unifying community tool for everyone to share and keep the information flowing.

Neither Lynnette nor Wendy are showing any signs of slowing down on the production of the Lyttelton Review. Despite the fact that these two girls dedicate between ten to fifteen hours each per week to its development, and work purely on a voluntary basis - the Lyttelton Review is here to stay.

When asked what is secret to the Review's success? The girls unanimously agree *"it is the community"*. And they add that *"without the contribution from residents or community groups; without people chatting to us on the street; without the willingness of local residents to be interviewed or photographed; and without the community wanting to share, the Lyttelton Review would not exist."*

During the past twelve months subscribers have written loads of thank you emails, which the girls love receiving. Below are just a few testaments to the Lyttelton Review being a much loved and needed communication tool for the local community:

"I just wanted to congratulate you for the fantastic job you do with this Review. I imagine it is a lot of work, and it looks smart and professional and is great to have to refer to, kind regards and well done!" - Paige

"Once again a fabulous Review. So much more informative and so much better written than the Press! Thanks" - Sarah

"Hi, your newspaper is impressive and professional." - Regards, Neville

"Brilliant review, thank you!" - Lisa

"The Information Centre, is so much more than just that, it beats "Google" hands down, and prevents the need for fear mongering gossip because what you need to know is on your website before the rest of us knew we needed to know it." - Louise

So, any last words from Lynnette and Wendy: *"Thanks Lyttelton for all your support, encouragement and generosity over the past year! We are looking forward to the year ahead, and helping to connect our community more."*

Article: Lyttelton Harbour Information Centre
Image: Lyttelton Review Covers



contact the lyttelton review

The team at the Lyttelton Review would love to spread the word about your community group, fundraising efforts, local heroes, business promotions, events and anything else that the local community would like to share. Deadline for any content: Friday before Monday publication date. Phone, Email, or Post: Lyttelton Review, PO Box 94, Lyttelton 8841.

Lynnette Baird	03 328 7707	021 224 6637	lynnette@realhomes.co.nz
Wendy Everingham	03 328 9093	021 047 6144	infocentre@lyttelton.net.nz

Red, White and Green

Not All is Green Over the Hill

On Friday 29 June, Canterbury Earthquake Recovery Minister Gerry Brownlee announced the rezoning of 1107 residential properties on the Port Hills from white to green, meaning the houses are safe for residential occupation and their owners can begin discussions with their private insurers and the Earthquake Commission (EQC) about repairs.

Mr Brownlee says comprehensive ground truthing analysis and complementary work by geotechnical engineers has been as site-specific as possible and has mapped areas where risk of rock fall and cliff collapse is most severe. "We can now say with a high degree of certainty that these 1107 properties can be rezoned as safe for ongoing residential occupation."

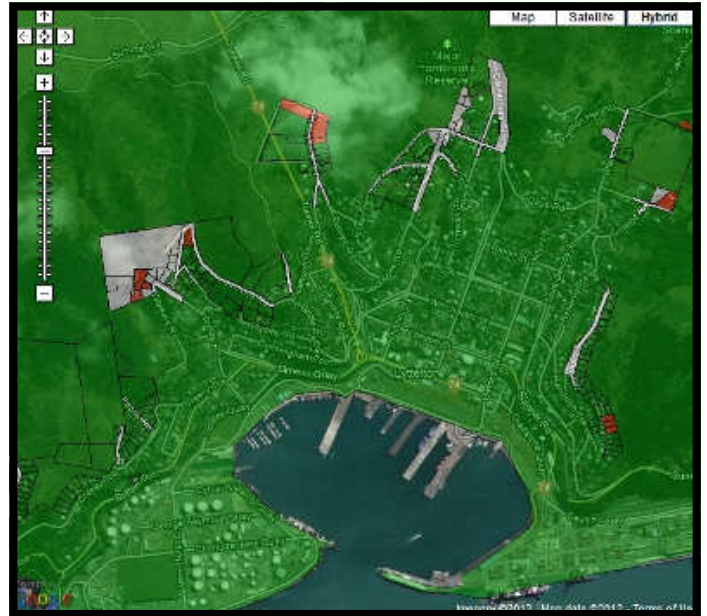
Mr Brownlee says the geotechnical analysis that led to today's announcement is the most specific of its kind ever done. "The unique situation we have found ourselves in means the rest of the world can now look to the Christchurch modelling for guidance on what can be done to assess land risks as a result of seismic activity. "I'm aware this work has taken a long time to complete and I am grateful to the Port Hills residents we've been able to rezone today for their patience."

Parts of the newly green-zoned area will be monitored by the council for any future risk of susceptibility to cliff collapse or landslide. There will be some cases in the green zone where properties have severe land damage and further individual geotechnical assessment may be required before a decision on repair or rebuilding work can be made. As with previously zoned areas on the flat land, this will be dealt with by EQC and insurance companies under normal insurance processes.

Those Port Hills residents zoned green today will be invited to a CERA-hosted community meeting in the coming week where representatives of insurance companies and EQC will outline the next steps in the rebuild and repair process for their properties. Property-specific letters will be delivered to affected property owners and individual property zoning information will be available on the CERA website.

Unfortunately here in Lyttelton, not everyone has gone Green this week. For some time now there has been hope that the White Zone in Lyttelton would all go Green, so this recent announcement may have come as a surprise. Through no fault of their own, at least 13 homeowners will be asked to leave their homes behind, and start afresh. Here at the Lyttelton Review our hearts go out to those whose homes have been declared Red Zone. Kai kaha – Stay strong.

Article: Press Release|CERA 29 June 2012



Lyttelton: mostly green, but some Red is sad to see.

Lynnette Baird Licensed Real Estate Agent
P: 03 328 7707 M: 021 224 6637

E: lynnette@realhomes.co.nz
W: www.realthomes.co.nz



Professionals

Kennard Real Estate Limited MREINZ
www.kre.co.nz

subscribe to the lyttelton review

The Lyttelton Review is published every Monday and can be delivered straight to your email inbox. Just send an email with the words "subscribe me" in the subject line, then sit back and wait for the next instalment of local news, events and reviews. If you do not have access to email, but would like read about our local events, Professional Real Estate print hard copies that are available from Thursdays at the Lyttelton Club; Samo Coffee, Fisherman's Wharf or the Lyttelton Harbour Information Centre on London Street. Or a copy can be delivered to your door, if you live in within the Lyttelton township: Contact Lynnette on 03 328 7707.

Lyttelton Master Plan Adopted

Councillor: Action, Not Words, Needed for Lyttelton Master Plan

Last week the Christchurch City Council unanimously gave the final sign off on the Council led and award winning master plan for the recovery and rebuilding of Lyttelton.

Programme Manager Healthy Environment Jenny Ridgen says the Council's decision to adopt the master plans is testament to all the hard work and energy that residents, community leaders, property and business owners and Council staff have put into the development of these plans.

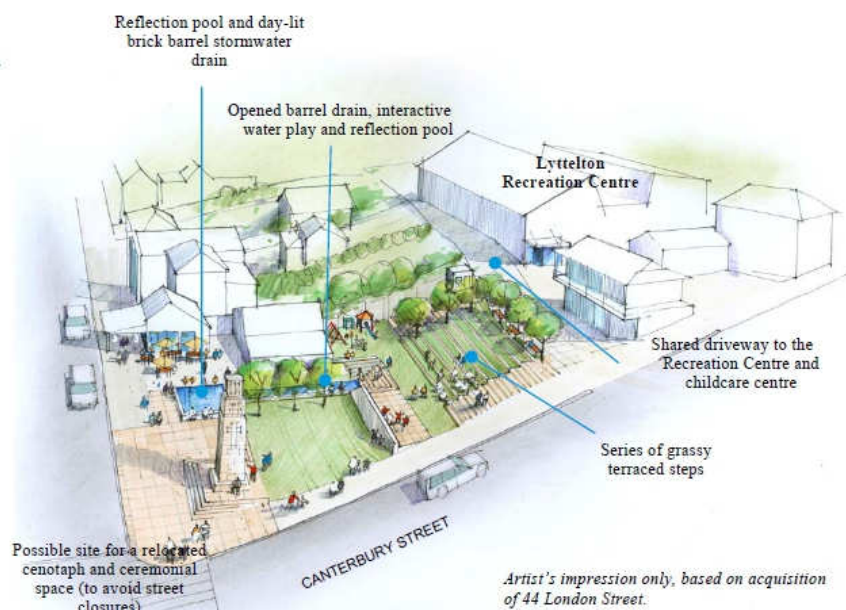
Mayor Bob Parker says the adoption of the Lyttelton Master Plan is a significant event in the recovery of Lyttelton. "The people of Lyttelton are to be congratulated, the Lyttelton Master Plan is the outcome of a passionate community who have a strong role to play in the future of our city. The knowledge and direction residents have given the Council has resulted in a community agreed, long term vision for business, employment and building opportunities; and the creation of liveable, prosperous and vibrant suburban centres that truly reflect the spirit and hope of local people. Lyttelton has faced such a difficult period, and it is heartening to see signs of recovery."

Christchurch City Councillor, Claudia Reid, added in a press release on 24th June "It is vital that aspects of Lyttelton's Master Plan should be implemented as soon as possible. It's important to the Lyttelton community that aspects of the plan should be made a reality as soon as possible. Lyttelton has been living in a vacuum for the past eighteen months – we now have an opportunity to see some aspects of the plan become a concrete reality."

Councillor Reid identified aspects of the plan she described as priorities. These included Lyttelton's Civic Square, resolving the long standing issue of port traffic on Norwich Quay and re-examining parking. "With the support of the Council I am working towards finding a practical solution to these three issues as quickly as possible. If Council's budget debate this week supports my amendment to provide for suburban land purchases, we will be in a position to secure the land for a Civic Square. This will become Lyttelton's beating heart and a focus for the community."

But Lyttelton's future doesn't lie solely in the Council's hands. Resolving the issue of port traffic on Norwich Quay requires a willingness by Lyttelton Port Company and the NZ Transport Agency to work with the Council. "It must be recognised that this is a once in a century opportunity for Lyttelton and the city. If the company does not address this issue in its Port Recovery Plan, in my view it will be abdicating its role as a good corporate citizen" said Councillor Reid.

Article: Media Release|CCC|Councillor Claudia Reid
PO Box 36, Diamond Harbour 8941 Mobile 0274 570 603



calling all community groups

The Lyttelton Review has been designed to help keep Harbour residents informed. It is a tool to be used for sharing information, and is widely circulated across residents, business and media contacts. A great way to find out what has happened during the year from our community organisations is to read their Chairpersons AGM summaries. If you would like to share your AGM reports, or any other information as required. with the wider community we'd love to hear from you.

pass it on, spread the word

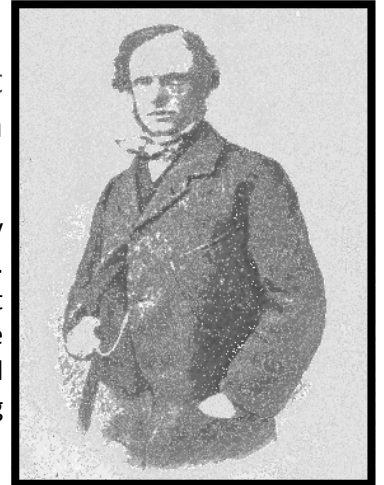
Not everyone receives these news letters, so please pass them onto anyone you think would be interested. We can also arrange printed copies for interested parties - just let us know. A big thank you to everyone who emails us with what is happening in their part of Lyttelton Harbour paradise. If you have news, or belong to a community group, own a business - get in contact with us, we would love to promote or share your story with the Lyttelton Harbour district. Errors, Omissions and Typos are all part and parcel of a volunteer service. These quirky additions are offered free for your amusement. But, if we have "got it wrong" - please just let us know.

Archaeological Delight

Plunket Site Reveals Godleys House

An exciting heritage discovery has been made following recent demolition work at the site of the former Lyttelton Plunket building on Sumner Road.

The remains of one of Lyttelton's earliest dwellings, the 1850 home of John Robert Godley have been uncovered at the site. Godley was a key figure in the Canterbury Settlement. Demolition work on the 1940s Plunket building, which occupied the site, was completed last week. Before any disturbance of its foundations, archaeologists were brought in to examine the site. Significant finds relating to Godley's house include the pile holes of the original house, and post holes with timber. A drip line, where water (most likely rainwater falling from the roof) shows the outline of the building, was also found.



Early administrative records from the Lyttelton Branch of Plunket have also been found in a reasonable condition. They are being cared for and securely stored.



Major earthworks on the site stopped late last week while archaeologists continued to carefully excavate the house site. Mayor Bob Parker says. "Considering the loss of much of Lyttelton's heritage buildings, to have something of this importance revealed for the community is tremendous. This find comes at a time when the community are building a new future for their centre – with the Council's recent adoption of the Lyttelton Master Plan. To uncover a tangible link to Lyttelton's early settlement is 'the icing on the cake' for the Lyttelton community," he says.

Christchurch City Council's General Manager Strategy and Planning Mike Theelen says much more archaeological evidence had been uncovered than expected. "We were optimistic that we would find some evidence of the Lyttelton Plunket's history, and perhaps some signs that Godley had also lived on the site, but this exceeds our expectations. This is an important site for the community and I would ask that the public help us to protect the site by not entering it. In order to protect the find I would ask that only authorised personnel enter this archaeological site. Thank you for helping us look after the material which has been discovered. I understand that this site has great significance for the community both in terms of the Plunket building and its earlier links to Godley, and further updates will be provided."

While the building that was demolished was built in the 1940s, the site is pre 1900s. Any demolition on a pre 1900s site requires an Archaeological Authority. This is a requirement under the Historic Places Act.

Article: Press Release | Christchurch City Council
Images: http://explore.com/John_Robert_Godley

lyttelton harbour network

For news, events, and what is open or closed around the Harbour Basin, don't forget to visit:

Diamond Harbour Information

www.diamondharbour.info

Governors Bay Information

www.governorsbay.net.nz

c'mon get involved

Lyttelton is known for its culture of volunteer activity and community participation. If you have ever had the thought that you would like to be more involved in the local community, but you are not sure where to go, or who to talk to? Start by having a conversation with the team at the Lyttelton Harbour Information Centre, as they can give you some advice on the many types of great volunteer organisations here in Lyttelton. If you are passionate about elderly care, sustainability, youth culture, harbour activities, heritage, radio, business development, fundraising, or just about anything - then there is a group who would love for you to be involved!



**Caring
for Life**

Lyttelton St John News

Banks Peninsula Area

Did you know that Lyttelton St John operates a Youth Programme for youth from 8 to 18 years?

The Lyttelton St John YOUTH Division meets weekly on Tuesday evenings from 6.00pm to 8.30pm in the training room at the Lyttelton St John Ambulance Station, 52 London St, Lyttelton. The Division offers a wide range of varied activities at levels relevant to the ages of its members. Activities include training and qualification in First Aid, leadership training and other topics that will serve them well in the community. Many St John Youth cadets progress on to become active in the adult aspects of St John including volunteers in our operations events and ambulance service teams.

Many of our fulltime ambulance staff gained their first experience of St John through St John Youth divisions. If you have children that are interested in participating in our Youth Division you can contact Pete Dawson on 021-334381 or pete@fishcon.net for further information about our Youth Division and its activities.

Lyttelton St John also operates an ambulance operations team based from the Lyttelton Ambulance Station. The Lyttelton Ops Team has two frontline Mercedes ambulances, one of which is manned 24/7 by the Team members. The Lyttelton Team is comprised of four fulltime paid paramedics supported by 33 volunteer ambulance officers. The Team works in shifts from 7.00am to 6.00pm and 6.00pm to 7.00am. All ambulance volunteers hold nationally registered qualifications and have the ability to challenge nation qualification levels up to and including paramedic. The majority of our volunteers hold the National Diploma – Emergency Medical Technician (EMT).

During May, 25 of our Lyttelton volunteers gave a total of 875 hours on the road providing emergency ambulance support to our communities averaging 35 hours per volunteer or three shifts per volunteer over that month. Each operational ambulance shift averages around 5-6 calls giving an average of around 250-300 calls per month. The Lyttelton station is a very busy station and its volunteers get heaps of valuable hands-on experience on the road. As well as this they provided pre-hospital emergency care coverage for a number of events throughout Banks Peninsula and the Mt Pleasant|Sumner area including motorcycle trials and rugby matches using the second operational ambulance. In future editions of Lyttelton St John News we will provide statistics from our ambulance operations team including some of the scenarios that they have been called upon to deal with.

As a charity that provides the sole emergency ambulance service for the entire South Island, St John places a very heavy reliance on its volunteers. We place the same reliance on our volunteers here in Lyttelton. In our case almost all of our volunteers based at Lyttelton do not reside in our community but come from across Christchurch to work from our ambulance station. This presents a problem for us and we certainly experienced this during the aftermath of the 22 February earthquake, as we did not have enough local volunteers to provide effective ongoing emergency ambulance coverage for our harbour basin community during the time that our community was isolated. This shortage of local volunteers at such a critical time placed huge strain on the few local staff that were able to respond. Those volunteers gave sterling service to this community at a time of great personal stress for them.

For us to be able to ensure that we can continue a high level of emergency ambulance support for this community we need the support of our community. We need to have locals who are willing to step up and accept the challenge as operational volunteer ambulance staff. In return we offer an opportunity to give something back to your community, to challenge nationally approved qualifications and to embark on a satisfying career in the St John Ambulance Service. There is no cost in joining St John who will provide you with full training and uniforms for volunteers.

If you consider that you have what it takes to become an ambulance officer with Lyttelton St John and want to give something back to your community you can contact Pete Dawson on 021-334381 or pete@fishcon.net for further information and to commence the St John recruitment process.

what did you hear

Here at the Lyttelton Review we love receiving your stories and notices about events. Keeping it local and keeping it relevant has resulted in the growth of the Lyttelton Review. One page at a time we are all working together to help connect residents around the Lyttelton Harbour. We couldn't produce the Lyttelton Review each week with your contribution. So here's a big Thank You from the editorial team to everyone who receives and continues to contribute to the success of the Lyttelton Review - your views, ideas and stories are appreciated and always welcomed.



BNZ Supports Lyttelton

Lyttel BNZ Moves Way for Permanent Location

All going to plan, come Monday July 30 2012, the BNZ 'Lyttel' Bank, or the BNZ Port-A-Com Bank will be a thing of the past!

Having been the working home of the local BNZ team, Kelly Eathorne, Donna Shine and Trish Royds for over a year, they will be able to trade places with their temporary residence and move across the footpath into the fully renovated bottom floor of 56 London Street. Number 56 London Street is the former home of an old Lyttelton bakery, and until recently a private home will become the new Lyttelton BNZ Bank.

"The move can't come soon enough", they all say. Whilst the Lyttelton harbour community has been really fortunate that the girls have been able to work in this cramped space for so long, it will be great to have full banking services resume again. Donna says that the hours will return to normal, 9.00am to 4.30pm; a part time banking advisor will join the team; and Lyttelton will get our long awaited 24 hour automatic teller machine again.

Interestingly the BNZ Port-A-Com bank will not disappear altogether. It has been built as a purpose built cabin for events for the BNZ in general. It was initially used for the rowing tournament at Lake Karapiro, before being moved to Lyttelton following the earthquakes, and now it can go back to supporting events and special occasions across the country. It is amazing how versatile these little cabins are and what uses they have been put to.

As the refit progresses we will keep you updated on the progress. Needless to say the Lyttelton BNZ team are counting down the days to move, and looking forward to celebrating the moment with their loyal customers.

Article: Lyttelton Harbour Information Centre



Community Service Award

At a ceremony held on Friday 22 June, at the Hill Top Tavern, Lyttelton resident Julie Lee received a community service award for her work at the TimeBank specifically during the February 2011 earthquake. Many residents will remember Julie working tirelessly alongside fellow community hero's helping to co-ordinate Lyttelton's earth quake response while providing endless words of comfort to those around her. Congratulations Julie!



Cliff Tidy Up

The Christchurch City Council contractors have been busy clearing away all the loose rock off the cliff behind the Naval Point Clubhouse. The work is finished for now but everyone should still be prepared to keep well away from the area in the event of more aftershocks.



Midwinter Swim

The reinstatement of the mid winter swim received a great turnout, even if it was -4 degrees earlier that morning. Twelve hardy souls fronted up for the mid winter swim after the last race finished and found themselves starring on the front page of 'Bay Harbour News' the following week. Good on ya!

lyttelton market town

Saturday mornings are never dull in Lyttelton! Enjoy the local markets including the Lyttelton Farmers Market for fresh produce, meat, fish, eggs, honey and yummy baked goods. Head up to the Grassy Art and Craft Market for bargain items or unique art items from creative local artists. Also be sure to check out the Community Garage Sale located up the driveway behind the swimming pool. The Garage Sale is a fundraising activity for any Lyttelton community group; so if you're not buying, feel free to donate items instead.

Inspiration Plus: In A Positive Light

LIFT Library Speaker Series with Tim Taylor

An intimate audience listened intently to Tim Taylor at the recent LIFT Library speaker series at Naval Point Club. Tim spoke on sustainability and sustainable social progress.

"Sustainability" is usually seen as a very complex topic, but it can be thought of as an umbrella idea, that encompasses a number of ideas. It means only the ability to sustain something – in fact many things. We often think of economic sustainability these days, but actually focus on social wellbeing is more fundamental, and vital. Sustainability describes a process or journey in making more justice.

Tim outlined four principles as a framework for thinking about and applying the idea of sustainability to discussion on our priorities as a society:

1. The idea of sustainability describes a process of making our societies more sustainable. We should focus on changing the aspects of our society that are patently unsustainable, aiming for gradual change, considering how to make systems *more sustainable, or sustainable enough*.
2. The idea of sustainability requires a precautionary approach to keeping our natural resource use and pollution within local and global ecological limits. We must work on aspects such as our present threat to ecological limits; the challenge is to make progress in a less ecologically-demanding way.
3. The idea of sustainability means sustaining people's wellbeing across different dimensions of life, and leads to the goal of making Sustainable Social Progress. And the focus must be on meeting the needs of present generations without compromising the ability of future generations to meet their own needs.
4. The idea of sustainability demands that justice today be given equal or greater importance than justice for future generations. Tackling today's huge and obvious social injustices, for example maintaining prosperity without damage, must be entwined with ensuring social justice in the future.

Reasoned Social Discussion: Such ideas need to be put to use by means of discussion, not by dictation. Such methods as consensus, used in hui, and consent as used in sociocratic systems, bring about reasoned and democratic results. Hopefully media, governance and funding needs can be influenced in a sustainable direction.

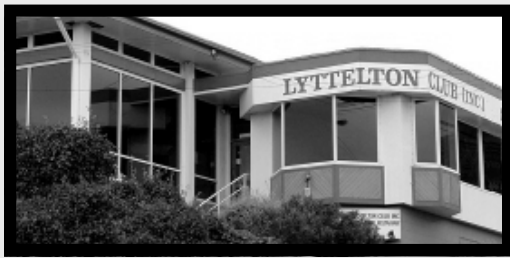
Article: LIFT Library

LIFT Library

Living Economies + Inspiration + Facts + Transition

If you're interested in international politics and know of Noam Chomsky, try his book called simply '**September 11**'. Chomsky wrote the book based on interviews conducted in the one month after the famous attacks in the United States. He uses his impeccable knowledge of US foreign policy in the Middle East and South Asia to shed light on the rapidly shifting balance of world power. His wide-ranging comments on the 'war on terrorism', Osama Bin-Laden, US involvement with Afghanistan and the long term implications of America's military attacks abroad are informed, perceptive and provocative. Speaking out against responding to violence with violence, Chomsky hopes that 'an aroused public within more free and democratic societies can direct policies towards a much more humane and honourable course.'

To become a member of the LIFT Library, based right here in Lyttelton, contact Juliet Adams on 03 328 8139 or mobile 021 899 404, for more information. And if you are already a member, and these books appeal to you, remember Juliet offers a complimentary pickup and delivery service to the Lyttelton Harbour Information Centre, or the Project Lyttelton office, if you are unable to make it over to the LIFT Library in Voelas Road.



lyttelton club restaurant

Open Thursday to Sunday 5.00pm to 9.00pm
 \$15 roast dinners | Children under 10 dine free Thursday and Sunday
 One child per paying adult *conditions apply

everyone welcome

\$15 Roast Dinners



Lyttelton Farmers Market Corner

Features: Gruff Junction Goats Cheese

Anna Moorhead has been a long time stallholder at the Lyttelton Farmers Market. It's been great over the years watching her product develop and seeing all the awards she's been accumulating.

Anna has been inspired by many of the places she frequents when naming her cheeses. Have you noticed her Lyttelton Blue, Fendalton, Halswelloumi, Selywn Farmhouse and so the list goes on?

The new cheese for this year is her Darfield Special. Inspired by the earthquake she's created a white mould pyramid that is cut in half by her black ash fault line. The earthquake cheese saw her winning the most outstanding cheese for 2012, with her 2012 Champion New Zealand Original Cheese award.

Anna and her father have created a lovely product from their gorgeous goat heard. We were lucky enough to visit a year ago. If you are interested to see how the cheese is made and what the farm is like Anna and her father do conduct farm tours. The size of your group will determine the price. Check on the Gruff Junction website www.gruffjunction.co.nz for more details or call 03 325 5066.

The other wonderful thing about Gruff Junction cheeses is that they are completely natural and for those of you who are vegetarians even the rennet is vegetarian. One Lyttelton favourite is the Gruff Junction Fromage Blanc, ideal for this linguine recipe, you might like to give it a try.

Linguine with Goats Cheese, Olives and Basil

4 tablespoons extra virgin olive oil
 4 large cloves of garlic, chopped
 250g kalamata olives drained and chopped
 Freshly ground black pepper
 150g Gruff Junction Fromage Blanc
 A handful of torn basil leaves
 500 g linguine

Cook pasta in boiling salted water until cooked. Approximately 12-15 minutes. Drain liquid leaving a small jug full of water.

While the pasta is cooking, combine the oil and garlic in a small pan and cook over a low heat, stirring frequently until garlic is pale golden, approx 3-5 minutes. Be careful not to burn. Add olives to the pan, stir, season with pepper and keep warm over low heat.

Crumble the cheese in a separate bowl and mix with a little of the pasta water and add basil.

Add this mixture and the olive mixture to the pasta and toss until combined. Add extra water or olive oil if needed. Serve with a green salad.



Article: Lyttelton Harbour Information Centre
 Image: Anna Moorhead | LH Information Centre
 Recipe: Wendy Everingham

looking for reading material

A book swap has been operating from the Lyttelton Harbour Information Centre for some time. Thank you to all the lovely residents who keep dropping books in. This service is available to all local residents, simply just pop in, choose a book, and then return it or another when you are finished. Borrow or swap - it's your call. If you are looking for reading material on economics, the transition movement, sustainability, alternative currencies and community development then check out the LIFT Library that has recently started. Contact Juliet Adams on 328 8139 for more information.

Notice of Meeting - Open to All

Lyttelton Community Association

The Lyttelton Community Association is holding a meeting:

Lyttelton Club, 24 Dublin Street 7.00pm Monday 2 July

Agenda:

- Paula Smith, Chairperson of the Lyttelton Mt Herbert Community Board, will brief the meeting about progress on the Lyttelton Community Recovery Plan, including discussions co-ordinated by CERA involving Lyttelton Port Company, Kiwi Rail, ECan, Christchurch City Council, and Transport New Zealand about Lyttelton infrastructure.
- Discussion in preparation for a submission on the proposed Christchurch City Council Brothels By-Law. There is some information located on the Christchurch City Council web site about it. You are encouraged to make individual submissions to Christchurch City Council on the by-law, which you can do on-line. The closing date is 10 July. The purpose of the meeting is to see if there is a common view that the LCA could represent at any hearing.

Article: Ken Maynard, Lyttelton Community Association Chairperson

Evans Pass Road

Rock Stabilisation Works

Rock stabilisation work will be continuing above Evans Pass Road, for a period of approximately eight to twelve weeks. Monthly updates will be sent out as reminders to stay well clear of the area, due to high risk of rock fall and other hazards. The timeframe may be subject to change but will be advised. You may hear the sound of drilling, explosives and helicopters as part of this work.

Please note that the closure of Evans Pass Road and the tracks on the slopes above Evans Pass will be enforced between 8.00am and 5.00pm Monday to Friday. There is no access permitted to the public due to the multiple hazards that are present on this site.

We look forward to your support through this part of the earthquake remediation works. For any queries please contact Gareth Hallam, Site Supervisor Abseil Access Limited: Mobile 0272 080 592 or email gareth@abseilaccess.co.nz

Article: Media Release | Abseil Access Limited

SCIRT Work Notice

91-93 Canterbury Street

SCIRT are making permanent repairs to a retaining wall at the top of Canterbury Street, outside Numbers 91 - 93 Canterbury Street. Works will commence on Monday 2 July 2012 and is expected to be completed by the end of August 2012.

For your safety, there will be some changes to the current road layout and on-street car parking. A lane closure will be in place along Canterbury Street on the same side of the road as the retaining wall. One way traffic flow will be in place for northbound traffic. Southbound traffic will be directed along Days Road. Speed limits will be reduced to 30km per hour in construction areas.

A footpath closure will occur where the retaining wall is being constructed on Canterbury Street. Pedestrian access will remain on the opposite side of the road.

plenty to share

In Lyttelton so many residents grow vegetables; or have fruit trees literally dripping with produce. Plenty to Share is about sharing any excess produce with the community. So if your lemon tree is yellow with goodness and you can't keep up with making lemon curd or drinking enough gin and tonics, bring those surplus fruits down to the organisers, where every Wednesday between 3pm and 6pm the swapping of produce is well underway. If there is something on the Plenty to Share table that you would like to take home, then you are warmly invited to do so. You will find Plenty to Share on the corner of London Street and Canterbury Street.

Radio Course

Thursday 12 July, 6.30pm, Naval Point Club Wardroom

Peter Marshall will present another of his popular Radio Operators courses. The fee includes the training course and the exam. This course has been subsidised and is available to the first ten participants to register for only \$25 per head. A study guide is available. Register with the Naval Point Club office 03 328 7029.

Harbour Co-Op Workshop

Wednesday 4 July, 4.00pm, Tommy Changs London Street

Pasta Making [including potato gnocchi] with Giulio from Tommy Changs. Most workshops are held on Wednesdays. Limited spaces are available, usually up to ten people, reservations are made at the shop, with members paying only \$5.00 per session [koha is encouraged] as opposed to \$20.00 for non-members. Extra costs may apply for materials.

Tin Palace New Exhibition of Paintings

Bob Tellick, States of the Interior, Weekends Only: 28 June to 15 July

States of the Interior at the Tin Palace is the first solo exhibition in New Zealand of British Artist Bob Tellick. He studied Painting at Kingston University and the Slade School of Art in London and is currently a part time senior Painting teacher at Burnside High School in Christchurch.

The exhibition includes a group of figurative works on paper based on found images the artist has collected from magazines. The other works being shown are an ongoing series of paintings that reference botanical and anatomical drawing. These visceral, layered images have been made on the surface of maps from the United States Department of the Interior Geological Survey, a collection of old maps that were being thrown out. It was this fortunate discovery of 'one mans rubbish' that was the start of the work being shown in States of the Interior.



BOB TELLICK
PAINTING EXHIBITION

STATES OF THE INTERIOR

RECENT WORKS ON PAPER

28 JUNE - 15 JULY

W E E K E N D S O N L Y

TIN PALACE 10:00-2:00

13A OXFORD ST

LYTTELTON

combined church service

Since the deconstruction of Lyttelton's historic churches you may not have heard that Lyttelton hosts a combined church service every Sunday morning at 10.00am at the St Joseph's Community Centre, 21 Exeter Street, Lyttelton. All residents welcomed.

sunday 10am : st joseph's community centre



Johnny Possum Band

Saturday 7 July, 7.30pm, Naval Point Club

The Johnny Possum Band has released its 5th CD, 'Short Summer', to critical acclaim and will be formally celebrating the release on July 7th at the Naval Point Club in Lyttelton.

For this latest CD the band brought in acclaimed New Zealand producer, Rob Mayes of Avalanche Studios, and the new sound shows a maturing band demonstrating new talents in song writing and musicianship as well as new direction into more folk/alt country sensibilities. It features 8 new original songs reflecting the bands maturing musical style. Drawing heavily on roots founded in country, Americana and folk sensibilities it features the uplifting sing-along songs 'If You Try' and 'Going Out'. It also reflects a more moody and sombre tone with the haunting 'Face of a Stranger', and the reflective 'Short Summer' and 'Hole in my Shoe'. The band also shows off their bluegrass background with the Hank Williams influenced 'Cheating Heart' and the foot stomping 'Brother O Brother'. Working for the first time with producer Rob Mayes, the band bought in extra instruments such as cello and keyboards to add depth to the sound.

The band will be departing on their 3rd USA tour on September 26th so this will be the last chance in 2012 that you get to see them perform locally. Doors open 7:00pm, Tickets \$20 at the door or from www.eventfinder.co.nz.

www.johnnypossum.com



Hobnail Hits Lyttelton

Thursday 12 July, 8.00pm, Wunderbar

Popular Wellington band Hobnail [formerly Hobnail Boots] are set to impress when their South Island tour hits Lyttelton in July.

The show, at the Wunderbar will feature songs from their new album 'Baggage' which is an impressive mix of original folk/pop songs that is already impressing people all over the country.

Hobnail will also give their rendition of classics we all know and love, and the Lyttelton crowd will also be treated to a performance by amazing young talent Amiria Grennell. Tickets \$20

dare to care

Dare to Care, enables all New Zealanders to easily identify and buy Christchurch made products and services. By buying these branded items you can help businesses, families, communities and the city rebuild. Campaign creator, Declan Scott of She Chocolat says "seismic events in Christchurch have given local businesses a renewed sense of purpose and have seen the need to take a more active and involved part in supporting the community." To learn more visit: www.daretocare.co.nz



Enough Stuff!

by Papa Tree - a puppeteers' collective

Enough Stuff !

Shadow Puppets for All to Enjoy

A group of Christchurch and Lyttelton artists and puppeteers have collaborated to create an amazing show using beautiful shadow puppets, music and acting. The show is entitled "Enough Stuff" and tells the story of a novice trumper and a kea and their parallel acquisitiveness.

It is rare to see shadow puppets in Christchurch, let alone ones of this quality. Although the show is billed for Kidsfest as being suitable for 4-10 year olds, all age groups can enjoy it on different levels.

The season begins at Heathcote School on Saturday, and then moves to the Travis Wetlands Hall on Monday. The talented team are especially keen for audiences to come and see us at the Travis Wetlands Hall, and you can combine this with a walk through the swamp to get a glimpse of the pre-European Christchurch ecology, and a picnic [weather permitting]. The group are also scheduling in a few library shows, including Lyttelton Library on 12th July at 2.00pm.

Our performers are:

Mary McCammon

Music

Juliet Neill

Actor

Kaylene Worrall

Puppet making and manipulation

Gaby Reade

Set and puppet manipulation

Selena Mantey Worrall

Set and puppet manipulation

Miyuki Takahagi

Set and puppet manipulation

Rowena MacGill

Set and technician

Travis Wetlands Education Facility, Frosts Rd, Parklands:

Tuesday 3rd July; Wednesday 4th July; Thursday 5th July and Friday 6th July: 11.00am and 1.30pm

New Brighton, Roy Stokes Hall - as part of Puppet Festival Day

Saturday 7th July 1.30pm

Lyttelton Library, London Street

Thursday 12 July 2.00pm, Free

Riccarton Baptist Church Auditorium, Corner Rattray Street and Peveral Street

Friday 13th July 3pm & 6pm

How much stuff does a kea need? How much stuff is just plain greed? A play with lots of humour featuring the magic of shadow puppetry. Hands-on activities following the show - 'fun with shadows' & 'how to make towel puppets'. A show the whole family can enjoy. We would love to see you there.

Child \$3.00 Caregiver optional, \$3.00. Duration: 40 minutes. Bookings not required.

Article: Juliet Neill

Christchurch City

 creative
COMMUNITIES nz

 2KidsFest

lyttelton west school reunion

Lyttelton West school will be 125 years old this year. A reunion is being planned to be held on Sunday 21st October 2012 [Labour Weekend]. Anyone interested in helping should contact Rita Norris or the school secretary on 328 8369.



Senior Exercise Class

Starts Friday 13 July, 10.30am, Lyttelton Main School Hall

We're back! Offering functional exercise classes for seniors. Exercise with a qualified physiotherapist. Programme specifically targeted to individual needs, in a friendly group setting.

Where: Lyttelton Main School

When: Fridays 10.30am - 11.30am First class 13th July

Costs: \$5.00 per session

For more details contact the Lyttelton Community House 03 741 1427

Proudly supported by: Cressy House Trust; Lyttelton Community House Trust
Christchurch City Council



Kidsfest runs from Saturday June 30 to Saturday July 14th. There are Loads of events through out the city and surrounding areas. For more information www.kidsfest.co.nz

Lyttel Pottery Painting

Kidsfest: Local Event

Paint your own mug or bowl with Lyttel Pots! We will then glaze it and fire it for you so that you have your own individually designed masterpiece that you can keep and use! Everything you need is provided - you just need your imagination!

Where: Tommy Chang's Cafe, London Street, Lyttelton

When: Tuesday 3 July 2.00pm to 4.00pm

Thursday 5 July 2.00pm to 4.00pm

Tuesday 10 July 2.00pm to 4.00pm

Thursday 12 July 2.00pm to 4.00pm

Age : All ages, child \$14.00

Bookings Visit: www.kidsfest.co.nz. DASH Booking Number D832

Lyttelton Library

Kidsfest: Tales for Tamariki

Tales for Tamariki Saturday 7 July 11-11.30pm Venue Lyttelton Library - Be entertained with stories, songs and traditional tales, told in Te Reo and English. Free event.

Lyttelton Mt Herbert Community Board

The next Lyttelton Mt Herbert Community Board meeting will be held on Tuesday 3 July at the Diamond Harbour War Memorial Hall Stage Room. Agenda now available at Lyttelton Library and Service Centre and online. Deputations always welcome. Phone Liz Carter 941 5682 for an appointment.

london street brothels

The Council has decided there is a need for a bylaw as brothels located in the Central City are inaccessible or badly damaged following the 2011 earthquakes. These businesses may wish to relocate to other parts of the city. Currently there are no bylaw controls around where a brothel can set up in the city. This proposed Bylaw will provide controls on where brothels can operate. View the proposed bylaw on line at <http://www.ccc.govt.nz/thecouncil/policiesreportsstrategies/bylaws/brothelsbylawconsultation2012.aspx> and have your say.

TimeBank Bridges Adult Education Gap

Adult Education Classes Available Through Winter

With previous funding for adult education cut the Lyttelton TimeBank is taking matters in to its own hands by running a series of adult education classes this winter: payable in dollars or time bank credits.

Through its TimeBank, Project Lyttelton is taking a fresh approach to community adult education. Classes on offer range from woodworking skills, to permaculture, craft making and guitar playing. They are being run by time bankers who will receive time bank credits for delivering them, and attendees can pay in New Zealand dollars or if they are members of the Lyttelton TimeBank, in time credits.

In past years ACE funded a variety of courses but these have been cut back due to changes in government direction and funding. This year Project Lyttelton are taking matters into their own hands with an asset based approach to education in the community. "Rather than be down heartened by the lack of funding and community courses on offer we started to look at what skills we have got as a community and how we could share these. It's just great, the Timebank has the potential to help facilitate learning for the whole community" Lottie, General Manager for Project Lyttelton said.

Timebanking is a way of trading skills within a community. Instead of dollars time credits are used as payment for services. You earn time credits for the work you do, and then use them to 'buy' another member's time to get the services you need. The key component is that everyone's time is equal. No matter what type of work is done, one hour always equals one time credit. 1 = 1. Every person is equally valued. It's free to join, check www.lyttelton.net/timebank for more details.

Learn the Art of Story Telling

The Portal, Every Monday during July 7.00pm – 9.00pm. Get wordy with the **art of story telling** with Bertha Tobias. Bertha ran this workshop already once a few years ago to great acclaim. She is a member of the NZ Storytelling Guild, and will have you crafting and telling your stories in no time! Two Timebank credits, or \$15.00 per person.

Sewing Postcards and Cosmetics Bags

The Portal, Sunday 17 July 7.00pm – 9.00pm | Sunday 24 July 7.00pm – 9.00pm. Get crafty with sewing **postcards and cosmetics bag** with Sue-Ellen Sandilands. Sue-Ellen of the 'stitched hearts' needs little introduction. If anyone can swing a needle and thread, it is Sue-Ellen! Join her and learn how to do it yourself! Two Timebank credits, or \$15.00 per person.

Learn to Play Guitar

The Portal, Every Monday in August, 7.30pm – 9.00pm. Get musical, sing and learn to play guitar with Natalia Artemiev. Bring your guitar, and professional music teacher Natalia will get you plinking the strings really fast! Don't forget your voice, guitar sounds double as good with singing! 1.5 Timebank credits, or \$15.00 per session.

Book early to avoid disappointment: Sue-Ellen Sandilands 03 328 9243 or email office@lyttelton.net.nz

LIFT Library: No Film Evenings in July

Because of other events in the Portal, other complications in arrangements, and the cold winter evenings, our film screenings in July have been cancelled. In August we expect to be back in the Portal, but on Wednesday evenings instead of Mondays, with shared meals included. There are some more films on the subject of money and alternative ways of managing exchanges of goods and services, before we move on to other topics. We didn't watch 'Money as Debt' last time, so that is yet to come – probably a later version than the one many of you have seen. When the August plans have been made I'll give you the details. And if you have any ideas about topics you'd like included, do let me know.

eqc establishes independent mediation scheme

Earthquake Commission customers will have access to an independent mediation service under an agreement with the Arbitrators' and Mediators' Institute of New Zealand. The decision to establish an independent mediation service recognised that there were times when there could be significant differences in perspective between customers and EQC that were best resolved with the help of someone who had no personal bias. The aim is to provide the opportunity to look afresh with the help of a totally independent mediator who has no predetermined view. The mediation scheme will be operational in August 2012. <http://canterbury.eqc.govt.nz/news/release/2012>

Woolfun Day at Bergli

Saturday 14 July, Anytime from 10.00am to 4.00pm

Enjoy a relaxed day with like-minded creative people in a small group. Koha appreciated for morning and afternoon teas. Bring your lunch, your wool craft gear, and if felting, a table if possible.

Where: Bergli Hill Farmstay, 265 Charteris Bay Road, Teddington, Lyttelton Harbour

Contact: Rowena MacGill
Phone 03 329 9118

Details: www.bergli.co.nz

Future Dates: August 14th, and September 8th to be at 73 Bayview Rd, Church Bay with Mary Ogilvie, 3294040.

Situation Vacant

Lyttelton Builders Ltd are looking for an administration person to run our office here in Lyttelton. This is an exciting position in a vitally important industry during these post-earthquake times! We are very prepared to work around and with the right person, in order to get someone of ability and calibre - we are looking for someone who can make this job their own..!

Here's a short list of what this person might need:

- Book-keeping experience, preferably with quick books but MYOB would be a good start
- Complete the payroll each week
- Job tracking and costing
- Provide the various reports required by management each week
- Good organisational skills
- They will know Microsoft Word and Excel, although Excel is easy and can be taught by us quite quickly if you have good general computer literacy
- The ability to work with the Fletchers, the Arrows, the EQCs on one hand, and our team of tradesmen and sub-contractors on the other

This could be a 9.00am till 3.00pm position, or could be full time. Come and talk to us today, or call Peter on 021 862 537 or email peter@lytteltonbuilders.co.nz.

Wanted: Sailing Instructor

The sailing school in Lyttelton is looking to train up an additional instructor to teach students on their 30ft training yacht in Lyttelton Harbour this season. If interested please contact info@learn2sail.co.nz or call 0800 SAILING [evening].

Flatmates Wanted

One flatmate wanted for a lovely London Street cottage. Large bedroom, and less than a minute walk from the village centre. Would suit a professional, easy-going and tidy person. \$140/week plus expenses. Please contact Emily 328 7137 or 021 0399120.

Available for Rent

Lyttelton Studio/flat available now. Fully furnished, self-contained, modern, warm and sunny. Suit a tidy single person. All set up so no set up fees for facilities. \$280 per week. Short or long term. No pets. Easy access and off street parking. Phone 328 8020 or 027 416 0625.

Three bedroom house in Corsair Bay, now available. It has some earthquake damage to cladding but is warm and sound inside and weather proof. Anyone interested could contact me in the first instance and I will put them in touch with owner. Rose Laing 027 662 4837.

lyttelton live music scene

Lyttelton is hosting some great live music these days: Tuesday 7.30pm Open Mic Night at Wunderbar; Wednesday 8.00pm Marlon Williams Live at Port Hole Bar; Thursday 7.30pm Live Music at Porthole Bar; Saturday 10.00am local musicians at the Lyttelton Farmers Market; Sunday 3.00pm Courtney Carmel at Freemans; Sunday 6.00pm local live music at the Lyttelton Club. So don't say home! Head on out and celebrate all that is Lyttelton Live.



Worcester Boulevard Exhibition

Exhibition Considers Christchurch 's Rich Architectural Past

The loss of architectural heritage in Christchurch 's past and present, and consideration for the city's future are considered in a visually rich outdoor exhibition on Worcester Boulevard.

Reconstruction: conversations on a city opens on Worcester Boulevard, between Montreal and Durham Streets from 23 June 2012. It is part of Christchurch Art Gallery Te Puna o Waiwhetu's Outer Spaces programme,

and includes works from both Lyttelton resident photographer Stephen Estall [featured Lyttelton Review 21 May 2012], and images of Lyttelton.

It is also one of the first in a range of Christchurch City Council transitional city projects to be installed within Christchurch's Central City. The projects, which were agreed to as part of the draft Central City Recovery Plan are designed to bring new life and people back to the heart of the city, and to help support business.

Curator Ken Hall says that the selection of digitised drawings, photographs, paintings, maps and plans provide a compelling visual account of how the city developed. Tracking the story of Christchurch / Otautahi from its earliest years, the outdoor exhibition examines the city's foundations, acknowledges loss and demonstrates how different dreams and values have been given form in our built environment.

"The level of detail seen in some of the enlarged images in the exhibition is breathtaking, compared to what you might see in the original photographs particularly. I love being able to see the detail and the degree of craft and care that has gone into the design and construction of these buildings. There is further pleasure in seeing into the images - children at play, a person directing traffic, or the text on a poster pasted on the side of a building.

"Walking through the exhibition, it is possible to see the architectural layers of the city, almost in an archaeological way. First, the wooden buildings, then the transition from wood, to brick, to stone. We see for example, through a stunning series of photographs the Canterbury Provincial Council Chambers emerging out of the undulating, swampy tussock land. As a whole, the exhibition presents each of us with an opportunity to build a strong mental imprint of the city's past. Every person will bring their own memories and attachments to their experience of the exhibition."

Written contributions from a range of local commentators, many of whom are architectural historians are displayed alongside the images. The commentaries raise important questions, says Mr Hall. "We have to ask whether this city can be rebuilt as a place of genuine quality and interest if we undervalue the significance of our rich architectural heritage past."

Reconstruction: conversations on a city continues until 16 September 2012.

For more information visit: www.christchurchartgallery.org.nz and www.ccc.govt.nz/transitionalcity

TE PUNA O WAIWHETU
CHRISTCHURCH
ART GALLERY



quake recordings turned into music

Lyttelton sound artist Jo Burzynska recorded the first hour of aftershocks on February 22 2011 and working with Melbourne sound artist Malcolm Riddich, she has transformed these sounds of aftershocks and chaos in a soundscape called Body Waves. Jo says it is music you can feel, when you are in a room that it is being performed in, it makes your body vibrate. "It is not a simulation of an earthquake, it is an artistic arrangement of sound". Performed at the Sound Spectrum Festival in Perth in May, the recording will have its debut in Wellington next month, and released in Christchurch "when the time is right". <http://stanierblackfive.com/body-waves-in-slovenia/>

Canterbury Law Workshops

Legal Issues for Community Groups

Community Law Canterbury runs workshops on legal issues for community groups. These workshops are free and, if you are on the board or committee of a Christchurch based not-for-profit, you are invited to attend. This year Canterbury Law are really pleased to be running some workshops in partnership with Harald and the team at Christchurch Community Accounting. At present, there are vacancies for the following two workshops:

Board Member workshop

Recommended for those who are new to being on the Board of a community group. It would also suit those who would like a refresher on what they are required to do when on a Board or Committee.

Date: Tuesday 24 July - morning

Venue: Christchurch

Covers: The main things the law requires you to do if you are a Board member
Spending your group's money – the four steps we recommend you follow before spending
Checklists – guides to funding, decision making, and dealing with conflicts of interest
A quick guide to personal liability for individual Board Members [time permitting]

Financial Governance in Non-Profits

Recommended for members of Boards and Managing Committees; also useful for non-profit managers and financial administration staff.

Date: Tuesday 04 September - afternoon

Venue: Christchurch

Covers: Financial Responsibilities of a Board
Financial information you need for decision-making
What does the Balance Sheet (Statement of Financial Position) tell you, and why is it important?
Being aware of liabilities: grants, holiday pay, tax bills and others.
Drawing up a simple budget and monitoring it.
Understanding an audit report.

How to register: You can register for either of these workshops by emailing Susan at Canterbury Law susan@canlaw.org.nz and letting them know your name and your group's name. They will then contact you with further details.

Time and venue details: On booking Canterbury Law will give you the details to work out whether the timing might suit you. And rest assured, they let you know specific details once you are all booked in.

Limited space: These workshops usually fill quickly and Canterbury Law reserve the right to offer priority to clients of CLC, CCA and the Canterbury Community Trust.

Changes to the law on charitable trusts: An update for people waiting on the planned workshop about changes to the laws for charitable trusts: that workshop has been put on hold. Canterbury Law are still waiting on details about the proposed changes, and will keep you posted.

Changes to the law on financial reporting standards: Christchurch Community Accounting and CLC are planning to run some workshops on the proposed changes to the financial reporting standards. These changes will affect almost all community groups. The new standards haven't yet been released, and Canterbury Law will schedule workshops once we know more.

If there's a legal, accounting or financial issue that you think it would be useful to have a workshop on, let the team at Canterbury Law know, and they will consider it for the future. www.canlaw.org.nz

power of the smile

A smile costs nothing, but gives much- It takes but a moment, but the memory of it usually lasts forever. None are so rich that can get along without it, and none are so poor but that can be made rich by it. It enriches those who receive, without making poor those who give -It creates sunshine in the home, fosters good will in business, and is the best antidote for trouble. Yet it cannot be begged, borrowed, or stolen, for it is of no value unless it is given away. Some people are too busy to give you a smile. Give them one of yours, as goodness knows that no one needs a smile so badly as he or she who has no more smiles left to give. - Anon

From the Mail Box

Lyttelton Review Loves Your Feedback

Here is a lovely letter that came through my office. I have to agree strongly with what these people are saying. I came along as well and had a lovely evening. Many thanks, Viki Moore [Constituency Agent, Office of Hon David Carter]:

Dear David Carter

I sent an email to The Star paper the day after Lyttelton's Festival of Lights saying how much we had enjoyed a lovely evening. Unfortunately they didn't publish it.

So I am hoping you will pass the word around Lyttelton for us, that they did a wonderful job? Everyone was friendly and very enthusiastic. The use of earthquake caused empty spaces was lovely to see. I had been shovelling snow all day and was tired and achy and we nearly didn't go. Unfortunately we didn't take the grandkids.

Congratulations Lyttelton, a job well done.

Cheers, Heather and Leon

In response to the Lyttelton Review cover article "London Street Brothels" [Edition 45: 18 June 2012] Banks Peninsula Councillor Claudia Reid forwarded this note:

*In response to the alarming red light article in the last Lyttelton News, I think it's worth noting that **brothels are, and always have been, able to operate in the Lyttelton Town Centre.***

*The **new bylaw proposed by the Christchurch City Council doesn't attempt to change that**, but what it does propose to do is limit brothels to the town centre zone only, rather than other areas of Lyttelton where they are able to operate now, because of the more permissive stance of the Banks Peninsula District Plan. Regulations on signage will also be introduced to ensure that it is not offensive.*

Council has mailed a flyer to all Lyttelton residents, that briefly outlines the intentions of the bylaw and inviting them to drop-in to the Top Club on Tuesday, 26 June from 4.30 to 6.30 pm if they want to know more and want to make a submission about where brothels can be established in Lyttelton.

Editor: Because an activity "has always been", it does not give right for it "to always be". One would have thought that in creating a NEW purpose developed bylaw, that this is the time to question the status quo. Should the outcome remain the same, at least the questions have been asked, explored and resolved for the future ahead. Continuing to glance in the rear view mirror will never produce forward thinking solutions.

Submissions on this bylaw can be made either: through the <http://www1.ccc.govt.nz/HaveYourSay/ConsultationView.aspx?ConsultId=834>; email brothelsbylaw@ccc.govt.nz or in writing to: "Submissions on proposed Council Brothels Bylaw 2012", Christchurch City Council, PO Box 73013, Christchurch 8154. Submissions on this Proposal Close 10 July 2012.

“c'mon get involved”

July 2012

Lyttelton Harbour

Community Garage Sale

All donations of good used, or new, household items greatly accepted at Project Lyttelton 54a Oxford Street. Please do not donate items that cannot be sold, as this increases our costs trying to take unwanted items to the charity barn, or worse still the rubbish depot.

Lyttelton Community Association

New members welcome. As an issues based organisation, we do not hold regular meetings. If you would like to be advised of when the next meeting will be held, or have an issue to discuss, please email us at LCAssn@vodafone.co.nz or phone Ken Maynard 03 328 9553.

Lyttelton Community House

Meals for the elderly continue to be prepared and delivered daily. If you know of any elderly residents who need this service, or would like to volunteer to assist, please contact Christine or Courtenay 03 741 1427.

Lyttelton Harbour Basin COMMUNITY Civil Defence

New members welcome. Meet second Monday of every month, 7.00pm St Johns Ambulance Station, London Street. To become involved contact the Area Co-ordinator Julie Lee on 03 328 7779 or 027 739 1832.

Lyttelton Harbour Business Association

For more details visit: www.lytteltonharbour.co.nz

Lyttelton Harbour Information Centre

Monday to Friday 11.00am to 3.00pm; Saturday 10.00am to 1.00pm; Sunday 11.00am - 2.00pm.

Lyttelton Harbour/Whakaraupo Issues Group

Initiatives for improving the environment and harbour water quality have been successful and are ongoing as part of a larger habitat recovery goal. New members welcome. Contact Claire Findlay 328 8930 or Melanie Dixon 328 9908.

Lyttelton Lions

Meet on the 2nd Tuesday of each month at Community House at 7.30pm. Anyone interested in becoming involved, or anyone who would like to learn more about this organisation, is most welcome. Contact Mary Jamieson 03 328 8523.

Lyttelton Historical Museum Society

Lyttelton Museum committee is developing a concept plan for the re-building of Lyttelton Museum. Meetings held once a month. New members, donations or any other support is welcomed. Lyttelton Museum, PO Box 95, Lyttelton. 328 8972 lytteltonmuseum@xtra.co.nz

Lyttelton Reserves Management Committee

Reserves Committee meets on a regular basis to make decisions about the management of the reserves. It organises weed control and planting programmes that include public and schools planting days. To be involved email the group at reserves@lyttelton.net.nz.

Lyttelton Time Bank

Either Bettina, Lisa or Lottie will be at the Lyttelton Harbour Information Centre every Tuesday, Wednesday, Thursday, and Friday 9.00am to 11.00am. Phone: 021 806 406 or email the team at timebank@lyttelton.net.nz

Lyttelton Youth Centre

Youth Centre/Community House, 7 Dublin Street, Lyttelton. Contact Christine 03 741 1427 for further details.

Plunket Playgroup

The Plunket Playgroup can be found at Lyttelton Main School, every Monday and Wednesday, 10.00am to 12noon. 50 cents donation and everyone is welcome. Contact Lisa York-Jones 03 328 8918 for more information.

Project Lyttelton

The Portal, 54a Oxford Street, Lyttelton [located behind the Swimming Pool]. Office 03 328 9243.

Toy Library

With the closure of the Lyttelton Recreation Centre, please contact Roz Jenkins 03 328 8552 for further information.

Volcano Radio

Currently - Off Air. Fundraising t-shirts available from Portico, 48 London Street.

“business directory”

support our local businesses

July 2012

Lyttelton

Abbraccia Bellydance	41 Voelas Road [West School]	03 328 8883	Paige 021 999 848
Acupuncture Therapy	18 Oxford Street	03 328 9053	Robin Kerr
Alexander Technique	Private Address	03 328 8968	Belinda Walker
Bank of New Zealand	56 London Street	0800 80 04 68	Trish, Kelly, Donna
Banks Peninsula Accounting	PO Box 83, Lyttelton	03 328 7231	Chris 021 280 0086
Beauty by Carly	Private Address	Private No.	Carly 021 294 5676
Bells Pharmacy	50 London Street	03 328 8314	
Choice Take Home Dinners	20 London Street	03 328 8784	Available 5.00 - 6.00pm
Christchurch Council Service Centre	35 London Street	03 941 8999	Debbie/Patricia
Christchurch Yoga	Private Address	03 328 8889	Rebecca 021 071 0336
Coastal Living / Picture Framers	34 London Street	03 328 7350	
Coffee Culture	18 London Street	03 328 7080	
Diamond Harbour Ferry	B Jetty, Lyttelton Wharf	03 328 9078	
Dockside Apartments	22 Sumner Road	03 325 5707	Grant / Kathy
Fishermans Wharf	39 Norwich Quay	03 328 7530	
Freemans Restaurant	47 London Street	03 328 7517	
Frog Web Works	14 Winchester Street	Private No.	Graeme 027 473 5018
Four Seas Restaurant	23 Dublin Street	03 328 8740	
Ground Gourmet Foods, Catering	Lyttelton Farmers Market	Private No.	Jenny 022 476 8633
Harbour Co-Op	12 London Street	03 328 8544	
Himalaya Design	20 London Street	03 328 7600	Wed-Sun 10.00am - 4.00pm
It's Indi	2 London Street	03 328 8185	
Jack Tar Sailing	West Side, No.7 Wharf	03 389 9259	Mike Rossouw
London Fish and Chips	34 London Street	03 328 8819	
London Street Books	48 London Street	03 328 8088	Thurs-Sun
London Street Dairy	34 London Street	03 328 7358	Open 7 Days
Leslies Bookshop	18 Oxford Street	03 328 8292	
Lyttel Beauty	32 Voelas Road	03 328 7093	www.lyttelbeauty.co.nz
Lyttelton Bakery	34 Norwich Quay	03 328 9004	
Lyttelton Builders Limited	56 London Street	03 328 9305	Peter Tocker 021 862 537
Lyttelton Harbour Information Centre	65 London Street	03 328 9093	
Lyttelton Library	35 London Street	03 941 7923	
Lyttelton Health Centre	18 Oxford Street	03 328 7309	
Lyttelton Physiotherapy	18 Oxford Street	03 328 8111	
Lyttelton Recreation Centre	25 Winchester Street	03 941 5656	
Lyttelton Sea Foods	26 Norwich Quay	03 328 7628	
Lyttelton Service Station	1 Canterbury Street	03 328 8749	
Lyttelton Shuttle	Airport, City, Anywhere	0800 08 07 06	
Lyttelton 'Top' Club	23 Dublin Street	03 328 8740	
Mac Todd Solicitors	50 London Street	03 328 9992	Ray Blake 021 43 66 50
Min Sarginson Real Estate	53 London Street	03 328 7273	
Mondo Vino	42 Norwich Quay	03 328 7744	
PedalOn Bicycle Service	2 Exeter Street	03 328 9246	021 055 6865
Port Electric	Private Address	03 328 8099	Ken 021 117 6848
Port Hills Auto Centre	42a Norwich Quay	03 328 9980	
Porthole Bar	40 London Street	Private No.	Mike 021 328 977 [Tue-Sun]

.../ Continued

“business directory”

support our local businesses

July 2012

Lyttelton [continued]

Portico	48 London Street	03 328 8088	Tue-Sun 10am - 4pm
Professionals Real Estate	36 London Street	03 328 7707	Lynnette 021 224 6637
Project Lyttelton Office	54a Oxford Street	03 328 9243	Sue-Ellen
Pynenburg and Collins Architects	PO Box 80, Lyttelton	Private No.	Simon 021 163 7193
Ray White Real Estate	47 London Street	03 331 6757	Marie Daisy
Roots	Private Address	Private No.	Christy Guilio 021 120 8083
SAMO Coffee	3 Canterbury Street	Private No.	Open 7 Days
Sno Clothes	23 Randolph Terrace	03 328 8584	Heather
Special Branch NZ Arborist	Private Address	Private No.	Tim 022 091 9202
Storm Hairdressing	34 London Street	03 328 8859	Sally
The Rookery	Ross Terrace	03 328 8038	Angus Rene
View Hairdressing	Private Address	Private No.	Megan 027 488 5173
Volcano Radio	Private Address	03 328 8566	

Diamond Harbour

Bronwen Jones– Writing and PR Services	Rawhiti Street	03 329 4303	www.bronwen-jones.com
Chalfont Cafe D.Harbour Country Store	2 Waipapa Avenue	03 329 4854	Open 7 Days till 5.30pm
Diamond Harbour Ferry	Waipapa Avenue	03 328 9078	
Diamond Harbour Medical Centre	2a Waipapa Avenue	03 329 4402	
Orton Bradley Park	Marine Drive	03 329 4730	
Snowdrop Cottage Children's Store	Waipapa Avenue	03 329 4464	Open 7 Days 9.00am - 5.00pm
Shunyata Retreat Day Spa	10 Rawhiti Street	03 329 4773	Contact Paru
Thrive: Chiropractic, Acupuncture, Nutrition	Private Address	03 329 3254	Mark and Lou Warren
For news, events, and what is open or closed in Diamond Harbour, visit: www.diamondharbour.info			

Governors Bay

At Home Childcare Limited	18 Bay Heights	03 329 9970	Neave Ross-Wallace
Governors Bay Hotel	52 Main Road	03 329 9433	
She Chocolat	79 Main Road	03 329 9825	
Living Springs	Bamfords Road	03 329 9788	
For news, events, and what is open or closed in Governors Bay, visit: www.governorsbay.net.nz			

“meeting venues”

Diamond Harbour Community Hall	Hall	Waipapa Avenue	Diamond Harbour	03 329 4119
Diamond Harbour Community Hall	Stage Room	Waipapa Avenue	Diamond Harbour	03 329 4119
Orton Bradley Park - Boardroom		Marine Drive	Diamond Harbour	03 329 4730
Governors Bay Hotel		52 Main Road	Governors Bay	03 329 9433
Living Springs		Bamfords Road	Governors Bay	03 329 9788
Black Cat - Canterbury Cat	Catamaran	B Jetty, Lyttelton Wharf	Lyttelton	03 384 0621
Lyttelton Club “Top Club”	Meeting Room	23 Dublin street	Lyttelton	03 328 8740
Lyttelton Harbour Info Centre	Boardroom	65 London Street	Lyttelton	03 328 9093
Naval Point Club	Wardroom	Naval Point	Lyttelton	03 328 7029
Project Lyttelton	Meeting Room	54a Oxford Street	Lyttelton	03 328 9243

“accommodation”

places to stay around the harbour

July 2012

Lyttelton

- **Dockside Apartments.** Three private apartments enjoying harbour views, now open and available for casual holiday or short term occupancy. Scenic and so close to London Street, this is an ideal option for friends or family to stay. Options range from studio; one bedroom or two bedroom apartment. Tariff from \$90 - \$120 per night. Phone Grant or Kathy on 03 325 5707 or view more details online www.dockside.co.nz.
- **Randolph Apartment.** Private two bedroom modern apartment with superb views across Lyttelton and inner harbour is now available for holiday or short term accommodation. Apartment features private spa, bar-b-que area, off street parking for one vehicle, and all the mod-cons including WIFI and MySky television. Tariff from \$120.00 per day, with minimum three night stay. Longer term rates available. Phone Heather 03 328 8585 or 03 328 8584.
- **The Rookery.** Built in 1866 The Rookery Bed and Breakfast is one of the oldest surviving local cottages, with wonderful panoramic views of the historic port town of Lyttelton, the main harbour, Quail Island, surrounding hills and volcanic cliffs. Three beautifully renovated rooms are available; one with ensuite facilities. Tariff from \$115 - \$160 per night. Phone Angus or Rene Macpherson on 03 328 8038 or view more details on line www.therookery.co.nz.

Diamond Harbour

- **Diamond Harbour Lodge** is the perfect place to relax, enjoy and unwind. Offering harbour sea views, spacious rooms, TV/DVD, CD player, large selection of books, board games, free wireless internet, fridge, toaster, jug, microwave, sink, selection of tea, complimentary cookies, electric blankets, underfloor heating in bathroom, heated towel rail, linden leaves toiletries, towelling bath robes. Robyn and Pete Hedges 3 329 4005 or visit www.diamondharbourlodge.co.nz
- **Manaaki Eco Farmstay Purau** offers self contained ensuite accommodation. One or two bedrooms with spacious fully equipped kitchen/living in a beautiful rural setting overlooking Purau Bay. Holiday (min 2 nights) or longer term rates available. Contact Wendy ph 329 3202 or view us online www.ecofarmstaypurau.co.nz
- **Mt Evans Bed and Breakfast** offers accommodation in two self contained cottages. Quiet rural setting only 500m from the beach. For further information contact Pauline 03 329 4414 or visit www.mtevansbnb.co.nz
- **The Old Exchange Bed and Breakfast** right in the heart of the Village at 2 Waipapa Avenue. Two queen sized bedrooms with ensuite bathrooms, own private entrance, sea views and within walking distance of the Ferry. Contact Jill 03 329 4275 or 027 482 6014.
- **Orton Bradley Park** offer self contained camper van sites for overnight stays. Services include 15 powered sites; treated drinking water; toilet blocks and dump site, with the golf club and tennis court next door. Fees start from \$15.00 per night for two persons, with additional adults at \$6.00 per night. Contact 03 329 4730.

Governors Bay

- **Governors Bay Bed and Breakfast** offers a place to relax and rejuvenate on nine acres to bush side paradise beside the harbour. Enjoy breakfast on the deck while listening to the native bird song. Furnished room with ensuite bathroom and separate sitting area also available for short term rent for those seeking emergency accommodation. For more details contact Eva on 03 329 9727, or view on line www.gbbbedandbreakfast.co.nz.
- **Governors Bay Hotel** has been restored to it's former glory and offers six guest rooms located on the first floor level. All rooms recently renovated with 32 inch flat screen televisions, queen size beds, free wifi broadband, heaters, electric blankets and vanities. Four of the rooms have direct verandah access through French doors opening out onto a balcony with wonderful views over the Lyttelton harbour. Contact the Governors Bay Hotel on 03 329 9433 or view more details on line: www.governorsbayhotel.co.nz.
- **Living Springs** offer an array of accommodation options from fully service private rooms, studios, twin rooms, shared bunkrooms to outdoor camping. Also available are some powered caravan sites. All rooms are clean, comfortable and well maintained for your relaxation. Contact Living Springs on 03 329 9788 or view more details on line: www.livingsprings.co.nz.

“harbourvibe”

what's on around the harbour this week

July 2012

02	Lyttel.Community Association	7.00pm	Lyttelton Club, 24 Dublin St	Master Plan Infrastructure Brothels
02	TimeBank Art of Story Telling	7.00pm	The Portal, 54a Oxford Street	Book Sue-Ellen 03 328 9243 \$15
03	Community House Lunch	12.00pm	Upstairs: 7 Dublin Street	Everyone welcome, meet new friends
03	Community Board Meeting	12.30pm	DH War Memorial Stage Room	Meeting Open to the Public
03	Lyttelton St John Youth Division	6.00pm	St John Ambulance Station	Training Room New Members Welcome
03	Tuesday Night Live Music	7.30pm	Wunderbar, London Street	Open Mic Night Musicians Showcase
03	Tumbleweed Tony McLaughlin	8.00pm	Porthole Bar, London Street	Country and Blues Musician Free Event
04	Community Garden	10.00am	The Portal, 54a Oxford Street	Shared lunch from 12.00pm
04	Harbour Co-Op Workshop	4.00pm	Tommy Changs, London Street	Giulio Makes Fresh Pasta \$5 \$20Non
04	Plenty to Share	3.00pm	Cnr London and Canterbury	Bring, Exchange and Share Food
04	Marlon Williams Live	8.00pm	Porthole Bar, London Street	Live Music Wednesday Free
05	Contra Dance Night	7.30pm	Private Address, Cass Bay	Contact Bill 03 328 8985 \$5
05	Live Music Thursday	8.00pm	Porthole Bar, London Street	Live Music Thursday Free
07	Lyttelton Farmers Market	10.00am	Lyttelton Main School	Fresh produce direct to you
07	Lyttelton Garage Sale	10.00am	The Portal, Oxford Street	Second Hand Bargains and More
07	Grassy Market	10.00am	The Grassy, Oxford Street	Art, Craft and Bric-a-Brac
07	Bob Telick Art Exhibition	10.00am	The Tin Palace, Oxford Street	Open Saturday Sunday until 2.00pm
07	Kidsfest: Tales for Tamariki	11.00am	Lyttelton Library, London St	Stories, Songs, Traditional Tales Free
07	Johnny Possum Band	7.30pm	Naval Point Club	Live Music, CD Release \$20 Door
07	Great Tunes by DJ Andy	8.00pm	Porthole Bar, London Street	Playing some great tunes Free Event
08	Combined Church Service	10.00am	St Josephs Community Centre	21 Exeter Street All welcome
08	Live Jazz Sundays	3.00pm	Freemans, London Street	Carmel Courtney Live Free
08	Sunday Night Live Music	6.00pm	Lyttelton Club, Dublin Street	Featuring Great Local Music Free
09	Lyttelton HBC Civil Defence	7.00pm	St Johns, 52 London Street	All Welcome. Julie 03 328 7779
09	TimeBank Art of Story Telling	7.00pm	The Portal, 54a Oxford Street	Book Sue-Ellen 03 328 9243 \$15
10	Community House Lunch	12.00pm	Upstairs: 7 Dublin Street	Everyone welcome, meet new friends
10	Lyttelton St John Youth Division	6.00pm	St John Ambulance Station	Training Room New Members Welcome
10	Lyttelton Lions @ Comm.House	7.30pm	Upstairs: 7 Dublin Street	All Welcome. Mary 03 328 8523
10	Tuesday Night Live Music	7.30pm	Wunderbar, London Street	Open Mic Night Musicians Showcase
11	Community Garden	10.00am	The Portal, 54a Oxford Street	Shared lunch from 12.00pm
11	Plenty to Share	3.00pm	Cnr London and Canterbury	Bring, Exchange and Share Food
11	Marlon Williams Live	8.00pm	Porthole Bar, London Street	Live Music Wednesday Free
12	Kidsfest: Enough Stuff! Puppets	2.00pm	Lyttelton Library, London St	Live Shadow Puppet Event Free

Lyttelton Review is proudly sponsored by
Lynnette Baird - Lyttelton's resident Professionals Real Estate Agent



Lynnette Baird | Licensed Real Estate Agent
P: 03 328 7707 M: 021 224 6637
E: lynnette@realhomes.co.nz
W: www.realhomes.co.nz



Professionals

Kennard Real Estate Limited MREINZ
www.kre.co.nz