

# “lyttelton review”

lyttelton harbour community update

www.lytteltonharbour.info

7 May 2012  
E40

## Light Up Lyttelton

Four Days of Festival Fun

The annual Lyttelton Harbour Festival of Lights is back, and this year the festival encompasses four days of events and celebrations throughout the Lyttelton township, from Thursday 7th June to Sunday 10th June, with the much anticipated Festival of Lights Street Party on Friday 8th June, from 6.00pm - 10.30pm.

This will be the eighth Festival of Lights, brought to you by Project Lyttelton and proudly supported by major sponsors Christchurch City Council and Lyttelton Port of Christchurch, along with sponsorship and support from many other local businesses and organisations.

Beginning with a launch night of local music and food at the rapidly rising Tommy Chang's, the festival will have fun for all - among other events there will be experimental music, wine tasting, a masked event, speaker series, an outdoor documentary film screening and a make and bake your own pizza event at the local community garden cob oven.

The Street Party on Friday 8th will begin at 6pm with an amazing masked parade, followed by the stunning Lyttelton Port of Christchurch Fireworks display at 7.30pm and an evening of entertainment on the main stage with a focus on some of Lyttelton's finest musical talent. Throughout the event revellers will be able to shop at an extensive street market and sample a variety of food and drink from local businesses and street vendors.

Festival organiser Andrew Turner says: "After the huge success of previous year's festivals and last year's street party we know that there is a real need for an event like this in the middle of winter. That's why we've extended the festival out to four days this year - with a great variety of events there will be something for everyone, and of course the fantastic street party and Lyttelton Port of Christchurch fireworks on the Friday evening. We want people to come out in Lyttelton and experience some of the great things that are going on here".

The event is managed by Project Lyttelton, which also runs the Lyttelton Farmers Market, Community Garden and New Zealand's first Time Bank. Project Lyttelton is strongly focused on sustainability and community building. Festival-goers are encouraged to use public transport and adopt the festival's Zero Waste approach, by taking any non-recyclable rubbish home.

This event would not be possible without the generous support of many local businesses. This year thanks needs to be made to: Christchurch City Council, Lyttelton Port of Christchurch, Hang-Up Entertainment, Lyttelton Engineering, Fireworks Professionals, The Canterbury Community Trust, Lion Foundation, The Press, The London Street Dairy and The Southern Trust.

Follow updates and latest information on the festival:

On facebook: [www.facebook.com/LytteltonHarbourFestivalOfLights](http://www.facebook.com/LytteltonHarbourFestivalOfLights)

On twitter: twitter name: Lyttelfestival

On website: [www.lyttelton.net.nz](http://www.lyttelton.net.nz)

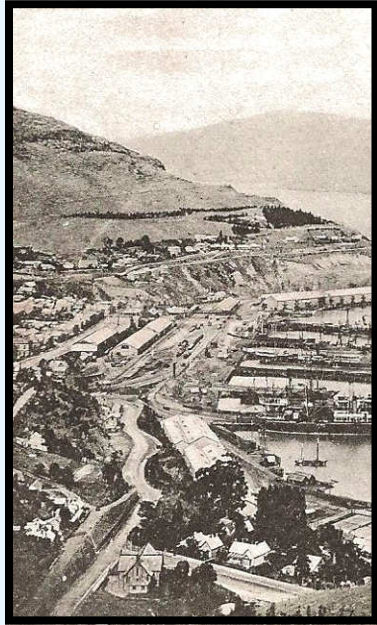
Article: Project Lyttelton

Images: Lyttelton Photographer Gill Taylor

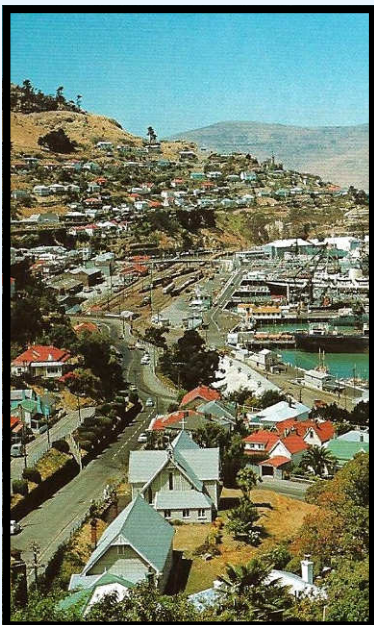


# about the lyttelton review

Lyttelton Review is a community newsletter initiative developed by local Professionals real estate agent Lynnette Baird and Lyttelton Harbour Information Centre chairperson Wendy Everingham. The objective of the Lyttelton Review is to help keep local residents informed with what is going on in Lyttelton and the wider Lyttelton Harbour community. Each week readers can read about community groups; businesses; events; and everything in between. Ultimately we are a collective of vibrant, like minded, unpaid volunteers striving to give an independent, and uncensored voice. If you have an event, topic, cause, or other, that you would like to share with the harbour community, then we would love to hear from you. Be heard, be seen, be informed - read it or offer it here.



Above: Postcard 1880's Era  
Below: Postcard 1970's Era  
St Saviours Lower Left Corner  
Supplied: Baird Collection



## No Place Like Home, Again

St Saviours Church Likely to Return to Lyttelton

When it comes to brick and mortar [or perhaps these days the phrase should be when it comes to timber and tin] the decision to demolish or remove, rebuild or restore is never an easy one. Such a decision is usually dictated by monetary concerns. But when the decision is based on thinking outside the square, then remarkable and exciting outcomes can happen. Such as the adventure of the first Lyttelton West Church.

With all the destruction from the earthquakes it appears that something of heritage status will return to Lyttelton. The former St Saviour's Anglican Chapel from Lyttelton West may be coming home to occupy the former Holy Trinity site.

Parishioners John Cleaver and Mark Penn introduced the idea to the local congregation and with further investigation it seems the idea has taken hold and was confirmed at the Anzac Ceremony by Reverend Neil Struthers. Lyttelton may have a new church by Christmas!

A brief history: The founding of an Anglican seafarer's church in west Lyttelton, in a parish separate from the Holy Trinity church, was first proposed in 1883 by former Lyttelton vicar [1851-59] Archdeacon Benjamin Woolley Dudley [1805-92]. The Holy Trinity vestry supported the concept of a second church, but in light of the straitened economic circumstances of that decade, opposed the idea of it being carved off into a separate parish.

Dudley however succeeded in his aim by leaving an endowment of land to his late parish to provide for a clergyman to minister specifically to the people of west Lyttelton and visiting seamen, and to assist the building of a church, but which could be uplifted only if the Lyttelton parish were divided. There was also a small but vocal group of people in Dampier's Bay (later West Lyttelton) who supported the idea of having their own church.

Christchurch architect Cyril Mountfort was commissioned to design a church to seat 200, but which could be extended later to seat 350. On 23 June 1885 a tender for £673 was let to local builders Sutton and Weastall, to construct the chancel and transepts of Mountfort's plan. The building was constructed in sections, and assembled on site on land at the corner of Brittan Terrace and Simeon Quay by bolting the sections together. The growth predicted for the congregation did not take place, and three bays of the nave and a steeple that apparently featured in the original plans were never built.

West Lyttelton was constituted a Parochial District on 22 October 1885, and seven days later the new church was consecrated as St Saviour's, at a total cost of £869.



## contact the lyttelton review

The team at the Lyttelton Review would love to spread the word about your community group, fundraising efforts, local heroes, business promotions, events and anything else that the local community would like to share. Published every Monday, but as the Lyttelton Review is a community publication we ask for any content to be submitted by the Friday before publication. Please contact one of our roaming volunteer reporters to share your story, or post any information to the Lyttelton Review, PO Box 94, Lyttelton 8841.

Lynnette Baird	03 328 7707	021 224 6637	lynnette@realhomes.co.nz
Wendy Everingham	03 328 9093	021 047 6144	infocentre@lyttelton.net.nz

Inducted as first vicar, Rev. Chambers was to minister to seamen and parishioners for thirty-six years. Church parades, when the companies of visiting warships would march up the quay to the church headed by their marine bands, were long remembered by townspeople. Captain Robert Falcon Scott and the crews of the Discovery and Terra Nova also worshipped in the church, and a plaque commemorates their association with the building.

In 1901 the building was repaired and re-roofed by builders Hollis and Brown at a cost of £100. Five years later, in 1906, the same firm extended the vestry. During 1916, a new buttress was installed by Messrs. Fletcher and Walsh. After Chambers death in 1921, grateful parishioners subscribed to the cost of a large stained glass window dedicated to his memory. This window Christ Calming the Waters was produced by Smith and Smith Ltd of Christchurch, and installed in 1922.

The West Lyttelton church was dismantled and moved in sections over Evans Pass to be assembled [and reoriented with the altar to the west] on a new site on the corner of Park Terrace and Chester Street in January/February 1976. The old site was subsequently redeveloped for elder housing, whilst the church's original altar was placed in the chapel at Scott Base in 1980.

In March 1976 the Historic Places Trust granted \$250 towards the approximately \$20,000 cost of reinstating St Saviours. The renovated chapel was officially reopened on 26 June 1976 by Bishop Pyatt.

Back at the Holy Trinity site in Winchester Street: In 1852 the original church was built from wood and brick but the timber proved to be very green, and shrank, so swayed spectacularly in the high winds. The congregation would assemble in terror and eventually the church was deemed unsafe, and was pulled down just five years later in 1857.



Image: Artist Impression by Phillip Baird

Historical Notes: [www.historic.org.nz](http://www.historic.org.nz)

In 1860 the second Anglican Church was the oldest stone church in the Canterbury area, and stood until the February 2011 earthquake. Built out of red rock stone sourced the local quarries and sandstone from Quail Island in the harbour.

In 2012 it is heart warming to think that the 1885's church from west Lyttelton will find pride of place back in Lyttelton - befitting to the history of early settlers, while re-establishing the connection the Anglican church has with the development of Lyttelton and Canterbury.

**Lynnette Baird** Licensed Real Estate Agent  
P: 03 328 7707 M: 021 224 6637  
E: [lynnette@realhomes.co.nz](mailto:lynnette@realhomes.co.nz)  
W: [www.realhomes.co.nz](http://www.realhomes.co.nz)



**Professionals**  
Kennard Real Estate Limited MREINZ  
[www.kre.co.nz](http://www.kre.co.nz)

# subscribe to the lyttelton review

The Lyttelton Review is published every Monday and can be delivered straight to your email inbox. Just send an email with the words "subscribe me" in the subject line, then sit back and wait for the next instalment of local news, events and reviews.

If you do not have access to email, but would like read about our local events, Professional Real Estate print hard copies that are available from Thursdays at the Lyttelton Club on Dublin Street; Samo Coffee on Canterbury Street or Fisherman's Wharf on Norwich Quay. Alternatively a copy can be delivered to your door, if you live in within the Lyttelton township. Just contact Lynnette on 03 328 7707.



## Market Talk

Celebrating Lyttelton Farmers Market

The Lyttelton Farmers Market vendors really do deserve a special award for the tremendous efforts in providing our town with a reliable source of food during the turmoil since September 2010. Not only do these vendors turn up week after week, but they are also helping to rebuild Lyttelton by continuing to attract visitors to our harbour region.

Another special mention this week needs to go out to the Lyttelton Main School, who have worked alongside market organisers to provide the best solutions they can with transferring the market to the lower playground. Through providing extra storage, and relocating the power supply, the Lyttelton Main School have ensured the market could continue to operate despite some serious space limitations.

Operationally things have changed at the market since February 2011. Since the first Lyttelton Farmers Market day back in September 2005, Sue-Ellen Sandilands and Wendy Everingham have been managing and attending the market. While Project Lyttelton is the umbrella organisation of the market, Sue-Ellen and Wendy have taken a break while Lynnette Baird was appointed market manager mid way through last year. Lynnette has played a lead role in co-ordinating the market, but now that things have settled down, the week to week management is handled by locals Gill Taylor and Kerry O'Donnelly. Lynnette continues to oversee the market and will play a major role in the growth of the market.

Seasons naturally determine the vibrancy of the market. And as we are well into autumn some of our vendors have bid farewell for this year. Hays Tomatoes, Pulp Kitchen and Sean Carr' Blueberries have departed. But fear not as one of our favourite vendors, Campbell's Apples, have returned. Try this delicious apple recipe:

### Tarte Tatin

1 sheet of puff pastry; 1 cup sugar

6 tart apples – braeburn are ideal, peeled and cored and quartered

1 tablespoon of flour; ½ teaspoon cinnamon; 100g butter

Cut the sheet of pastry to fit a 22cm ovenproof frying pan. Put half the sugar into the frying pan with the water and stir to dissolve. Over a gentle heat allow the sugar to cook until it's a light golden caramel. Add the apples arranging them in a nice pattern around the pan and packing them as closely as you can. Mix the remaining sugar and cinnamon and sprinkle over the apples. Melt the butter and pour over the apples. Fit the pastry over the top and place in a hot oven [200c] and bake until the pastry is puffed and golden. Remove from the oven and stand 4-5 minutes, then turn upside down onto a flat plate, so the caramelised apples are on top. Cut into wedges and serve with yoghurt, cream or icecream.

Article: Project Lyttelton

Image: iStock.com

## calling all community groups

The Lyttelton Review has been designed to help keep Harbour residents informed. It is a tool to be used for sharing information, and is widely circulated across residents, business and media contacts. A great way to find out what has happened during the year from our community organisations is to read their Chairpersons AGM summaries. If you would like to share your AGM reports, or any other information as required. with the wider community we'd love to hear from you.

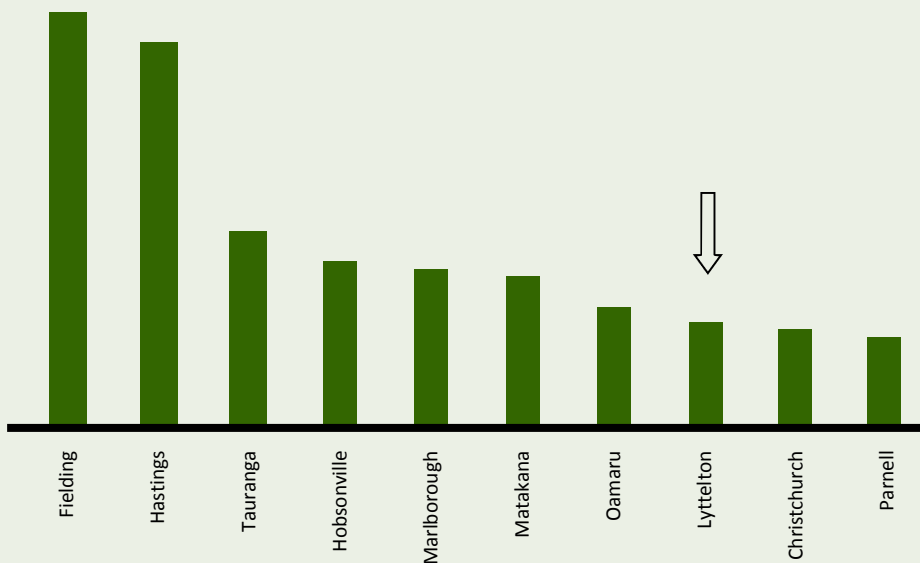
## free weekly shopping bus

Lyttelton Community House are using their community van for a weekly shopping run into town for Lyttelton residents without easy travel alternatives to supermarkets. They will be going to New World South City and Pak n Save. So if you find transport to your weekly shop to be a challenge, the Lyttelton Community House encourage you to utilise this service. Every Wednesday 1.00pm Lyttelton Community House, 7 Dublin Street, Lyttelton. Contact Courtenay 03 741 1427.

## Vote for Lyttelton Farmers Market

Win A Foodie Trip to Melbourne

Okay, we might be a little biased here, but we believe the Lyttelton Farmers Market is one of New Zealand's best Farmers Market. If you agree with us, go on line to vote for the best Farmers Market. One vote will be drawn to win the Tastiest foodie long weekend in Melbourne with their own private tour guide to source the best of Victoria. Melbourne community Farmers' Markets are authentic, vibrant, tempting and irresistible to any foodie. Voting closes on the 3rd of June. The Top Ten markets across New Zealand are currently recorded as follows [data released May 4th 2012]:



Cast your vote to name Lyttelton Farmers Market the best market in New Zealand!

Visit:

[www.farmersmarkets.org.nz](http://www.farmersmarkets.org.nz)

## St John Youth Programme

Started in Lyttelton

You hear about Scouts, Guides, Cubs, and Brownies but did you know that St John also has junior and youth programmes? Catering for a series of ages, St Johns have now started the Cadet Programme for 8-18 year olds and Youth leaders 18+. We will look at implementing the Penguin Programme for 6-8 year olds later in the year. St John Lyttelton would like to hear from you if you are keen to get involved in your community this way.

For more information see: [www.stjohnyouth.org.nz/cadets](http://www.stjohnyouth.org.nz/cadets) or [www.stjohnyouth.org.nz/leaders](http://www.stjohnyouth.org.nz/leaders)

Or contact: Annabelle Bain 027 222 4604 or Mike Capon 03 328 8145  
[acpropman@ihug.co.nz](mailto:acpropman@ihug.co.nz) [mike.capon@stjohn.org.nz](mailto:mike.capon@stjohn.org.nz)

## just a small note

Not everyone receives these news letters, so please pass them onto anyone you think would be interested. We can also arrange printed copies for interested parties - just let us know. A big thank you to everyone who emails us with what is happening in their part of Lyttelton Harbour paradise. If you have news, or belong to a community group, own a business - get in contact with us, we would love to promote or share your story with the Lyttelton Harbour district. Errors, Omissions and Typos are all part and parcel of a volunteer service. These quirky additions are offered free for your amusement. But, if we have "got it wrong" - please just let us know.





## lyttelton club restaurant

Open Thursday to Sunday 5.00pm to 9.00pm  
\$15 roast dinners | Children under 10 dine free Thursday and Sunday  
One child per paying adult \*conditions apply

**everyone welcome**

**\$15 Roast Dinners**



### Festival of Lights: Countdown

30 Days until the Lyttelton Harbour Festival of Lights

When Lyttelton's famous festivals started in 2005 Sue-Ellen Sandilands has been at the helm providing essential support to the festival team. In 2005 Lyttelton had its first Festival of Lights. Sue-Ellen and Wendy Everingham basically created the festival from scratch with the help of a small team of supporters. At that time Sue-Ellen was employed by the Lyttelton Harbour Business Association. "Yes way back then the festivals were a joint production between Project Lyttelton, the Lyttelton Harbour Business Association, the Banks Peninsula District Council and the Lyttelton Harbour Information Centre", she said. Shortly after, all the festivals came under the umbrella of Project Lyttelton. A small piece of history in the life of Project Lyttelton, Sue-Ellen became the organisations first employee!

Sue-Ellen has a long history in Lyttelton. She proudly tells us she has been here for eighteen years! Originally from Queensland Sue-Ellen has been in New Zealand since February 1975. Over the years she had two beautiful daughters and now she has three lovely grandchildren who she is very proud of. Her eldest grandchild will be coming to the festival this year. "It will be a great treat for Dillan to come and spend the weekend in Lyttelton and enjoy all the festival activities", she said.

Before being employed by Project Lyttelton in 2005 Sue-Ellen had a career in administration working mostly in the health sector. She had the perfect background for the work she has been involved with over the years. At this year's festival her role focuses mainly on coordinating all the street stalls and volunteers. It's a big task as there are generally over 40 stalls.

You have to admire her enthusiasm for the event after all these years. She says a new energy exists within the festival again. The earthquakes have highlighted the importance these community events have on the residents. "We really need something exciting to look forward to in the middle of winter". Last years event highlights how much people love the festival. "It's just a fun family event with a lovely community feel ", she says.

If you would like to volunteer for this year's event or host a stall, please touch base with Sue-Ellen who is located at the Project Lyttelton office, located behind the Lyttelton Pool. She works Tuesday to Friday and can be reached on 328 9243 or [office@lyttelton.net.nz](mailto:office@lyttelton.net.nz)

Article: Project Lyttelton

Image: Project Lyttelton

### bells pharmacy for 50% off canvas prints

Just in time for Mother's Day! Give mum the ultimate keep sake this mothers day and print your favourite family image onto canvas. Head down to Bells Pharmacy, 50 London Street, Lyttelton and order your canvas print to receive 50% off the normal price. But don't wait as this offer ends on Sunday 13th May.



# plenty to share

In Lyttelton so many residents grow vegetables; or have fruit trees literally dripping with produce. Plenty to Share is about sharing any excess produce with the community. So if your lemon tree is yellow with goodness and you can't keep up with making lemon curd or drinking enough gin and tonics, bring those surplus fruits down to the organisers, where every Wednesday between 3pm and 6pm the swapping of produce is well underway. If there is something on the Plenty to Share table that you would like to take home, then you are warmly invited to do so. You will find Plenty to Share on the corner of London Street and Canterbury Street.

## Mask Parade Street Party

Lyttelton Festival of Lights, Friday 8 June

Calling All – both colourful or simply wishing to hide behind a mask!

This is to inform you that the annual mask parade will go ahead again this year. We are offering a chance for people to get out on the street, be fun, be ridiculous, or be magnificent. We are also looking for volunteers to control giant puppets. The Festival of Lights itself will go for three days, plus some preliminary events, with the Street party happening from 6pm on Friday June 8th – not long!

**THE MASK PARADE** - Traditionally the street party begins with the mask parade. All the local school children process in mask to the CSM Samba Band we've come to know and love. We get hundreds, and an increasing number of adults in mask and costume as well. The procession is led by giant puppets, and we need at least three adult puppeteers and some young people to use these. Last year we had some clowns accompany the procession as well. **ALL ADULTS AND CHILDREN IN MASK ARE WELCOME TO JOIN THE PARADE.**

**MASK MAKING FOR ADULTS.** Held in Juliet's studio in Lyttelton – a very sociable way to make your own mask under my guidance if you need. Several techniques offered. Small cover charge. Four sessions – Wednesdays – May 9, 16, 23 and 30 at 7pm. **PLEASE CONTACT JULIET IMMEDIATELY IF INTERESTED.** Wednesday's not acceptable, another evening can be explored.

**FAMILY MASK MAKING WORKSHOP, SUNDAY 27TH MAY** A two hour workshop in quick mask making for adults and children to be held at Lyttelton Main School – time to be advised. Enrolments open soon. Volunteers are also needed to help with the workshops.

**BORROW A MASK** – for adults who would like to get out there, but don't have the time to make their own masks. Some of us in Lyttelton have been making masks and costumes over the years, and would like to offer them on loan for the street party. Available for a \$15.00 deposit at the Petanque Court Saturday 26th May or the Project Lyttelton Portal Building if raining. Come and choose your own – but here are limited numbers.

### WANT TO PERFORM, OR BE A PUPPETEER:

- We need three adult puppeteers to rehearse and perform with the phoenix puppet [rose firstly at The Pirates of Corsair Bay]. No experience necessary.
- We need three adult puppeteers to control the giant fish and volcano puppets, and up to 10 child puppeteers to go inside the giant fish puppet.
- We need adult professional street performers.

### CONTACT JULIET – AND SPREAD THE WORD!

Phone:  
03 328 8558

Mobile  
021 032 7014

Web:  
[www.dastardlydeeds.co.nz](http://www.dastardlydeeds.co.nz)  
[www.thumbsuppuppetry.co.nz](http://www.thumbsuppuppetry.co.nz)





# c'mon get involved

Do you want to be a giant fish? ...or a phoenix, or a moving volcano? Or perhaps help at mask making events or with organizing the green room for the performers on the night? The Lyttelton Harbour Festival of Lights is approaching and we need many volunteers in numerous different roles from the outlandish to the more predictable. This is Lyttelton's winter gem so step on up and be a part of the action. Contact Sue-Ellen at the Project Lyttelton office to find out about all the volunteer roles and how you can be involved. Phone 03 328 9243 or email [office@lyttelton.net.nz](mailto:office@lyttelton.net.nz)

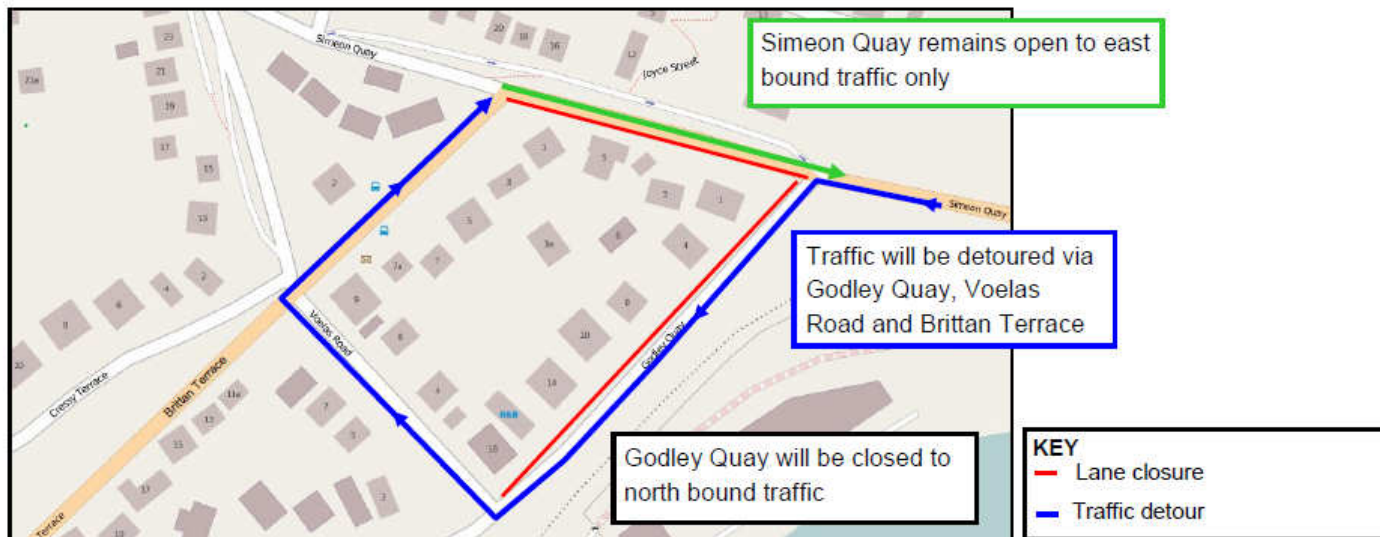
## Major Road Works

Simeon Quay and Godley Quay

Stronger Christchurch Infrastructure Rebuild Team [SCIRT] will be installing a new storm water pipe across the intersection of Simeon Quay and Godley Quay. This new storm water pipe will improve the capacity of the network and also service Cunningham Terrace. Work will begin Monday 7 May and is expected to take approximately four weeks.

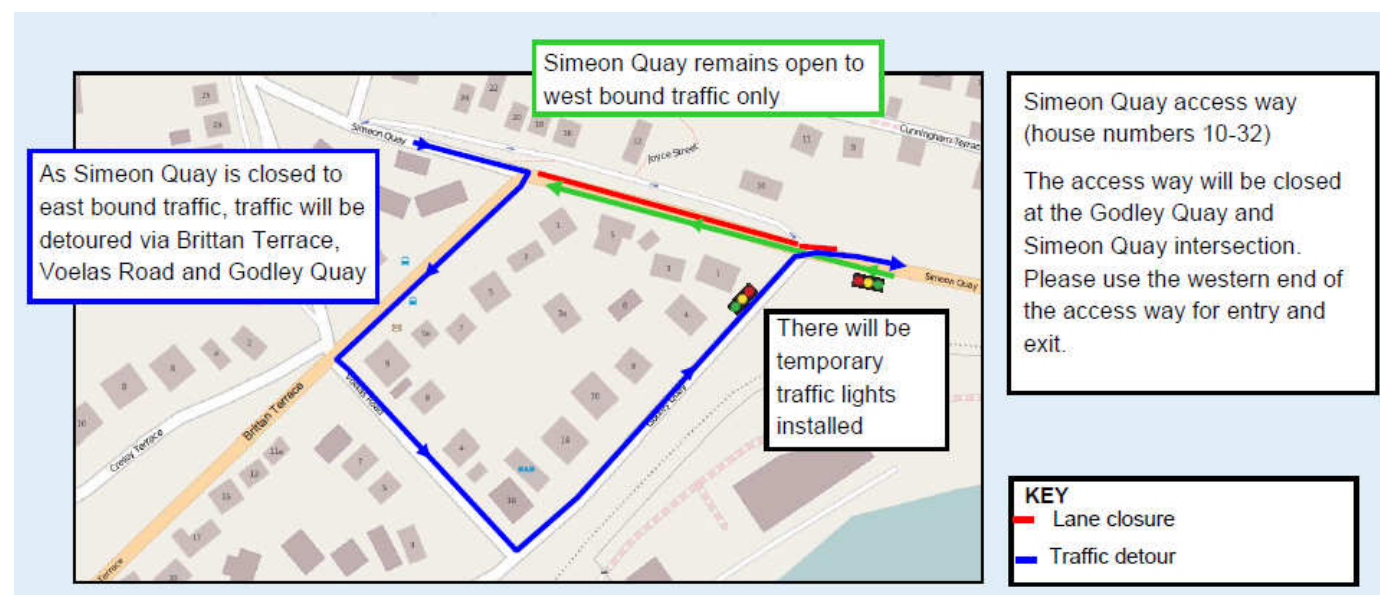
### Notice of Road Closure | Stage One 7 May to 21 May:

Installation of storm water pipe across Simeon Quay along the west bound lane, and along Godley Quay north bound lane.



### Notice of Road Closure | Stage Two 21 May to 8 June:

Installation of the stormwater pipe across the east bound lane of Simeon Quay.





## looking for reading material

A book swap has been operating from the Lyttelton Harbour Information Centre for some time. Thank you to all the lovely residents who keep dropping books in. This service is available to all local residents, simply just pop in, choose a book, and then return it or another when you are finished. Borrow or swap - it's your call.

If you are looking for reading material on economics, the transition movement, sustainability, alternative currencies and community development then check out the LIFT Library that has recently started. Contact Juliet Adams on 328 8139 for more information.

## Helln'Back Experience

Next Show: Tuesday May 15th at the Port Hole Bar

Poets, story tellers, musical performances and open mic opportunities are all on offer at the Porthole Bar, 40 London Street, Lyttelton. A monthly event is now into it's fourth show.

Event host Helen Back says "I just really wanted to organise a night that created wonderful memories. Luckily, as it turns out, many other people enjoy and appreciate a night filled with variety and spontaneous performances too. Mike and his crew at the Porthole are very welcoming and provide a cosy space with a ever improving outdoor area, not to mention the delicious food and beverages. Add to this mix a few friends willing to share their stories, poems and songs, perfect ingredients! Each night is different and a little difficult to define. I guess you just have to be there to get The Helln' Back Experience!"

May 15th and June 19th, 8pm are the next two dates. For more information contact Helen 328 7207 or text 022 028 7197.



## Celebrity Experience

Mega Mitre10 Personality Visits Lyttelton

Last week, as part of the Canterbury Coastguard May Day celebrations last week, Mega Mitre10 personality, Levi Vaoga, spoke to the children at Lyttelton Main School. Inspiring the children that they can become anything want, the children were in awe of the "big is best" personality with plenty of questions being enthusiastically asked. This year will be Levi's fourteenth world Worlds Strongest Man competition, and he is heading to Finland in June to compete. Levi lives in Taihape and says being strong take time. Every day Levi eats 30 eggs, one kilo of chicken, plenty of broccoli and kumara, and says it takes him about an hour to eat a meal.



## Keep Clear of the Cliff

Naval Point Yacht Club

The Christchurch City Council is concerned that there may be more rock fall off the cliff behind the Naval Point yacht clubhouse. It is still possible to walk behind the building, near the cliff, but it is recommended that you do not loiter in the area. Some remediation work is planned and an alternative access route across the front of the building is also being investigated.



Lyttel Beauty  
32 Voelas Road, Lyttelton  
[www.lyttelbeauty.co.nz](http://www.lyttelbeauty.co.nz)

**Lyttel Bliss**  
Escape for a while

**\$70** May/June only

To book an appointment ring Emma on  
03 328 7093 or 021 297 3885

## Lyttel Beauty | Lyttel Bliss

Escape to Lyttel Beauty

Emma from Lyttel Beauty is having a promotion running through May and June. "Lyttel Bliss" Aromatherapy Massage and Petite Pedicure [includes nail polish to take home]. \$70 May and June only. Ideal for yourself, for mum or for someone you love.

Call Emma today to book your Lyttel Bliss Escape:  
03 328 7093 or 021 297 3885 [www.lyttelbeauty.co.nz](http://www.lyttelbeauty.co.nz)

## plenty to share

In Lyttelton so many residents grow vegetables; or have fruit trees literally dripping with produce. Plenty to Share is about sharing any excess produce with the community. So if your lemon tree is yellow with goodness and you can't keep up with making lemon curd or drinking enough gin and tonics, bring those surplus fruits down to the organisers, where every Wednesday between 3pm and 6pm the swapping of produce is well underway. If there is something on the Plenty to Share table that you would like to take home, then you are warmly invited to do so. You will find Plenty to Share on the corner of London Street and Canterbury Street.

## Lyttelton Club Live Music

Every Sunday night from 6.00pm to 9.00pm. This Sunday features Lindon Puffin.

## Roots

We are taking bookings for this Wednesday May 9. On offer 7-10 course meal. Arrival time 7.00pm. Venue inside Tommy Chang's on London Street. Tables available: 2 tables of 2-3 people or 1 table of 4-6 people. Everything is sourced as locally as possible and fresh on the day. No menu will be given. Please contact Giulio or Christy to book in for a table and for further details 021 120 8083. Thank You [www.giulioisturla.wordpress.com](http://www.giulioisturla.wordpress.com)

## Found

A pair of sun glasses on the Bridle Path. Contact the Lyttelton Harbour Information Centre 03 328 9093.

## Lost

On the foreshore at Cass Bay a black wool zip up cardigan. Please call 021 134 6228 if you find it. Thanks.

## Short Term Let

Fully furnished. In the Lyttelton green zone and available from May 12 to July 2 [possible to extend by one month]. Two bedrooms, two living areas, two bathrooms, two heat pumps, a log burner and spectacular views. Call Sarah on 022 644 5134 or Doug on 022 474 7400. Rent \$350 per week.

## Studio Flat Available

Lyttelton Studio/flat available now. Fully furnished, self-contained, modern, warm and sunny. Suit a tidy single person. All set up so no set up fees for facilities. \$220 plus cheap phone and power as shared. Short or long term. No pets. Easy access and off street parking. Phone 328 8020 or 027 416 0625.

## Flatmate Wanted

To share sunny modern home in Foster Terrace with owner and her two cats. Available July 1st. Ph Brenda 021 179 9448.

## Lyttelton West School Reunion

Lyttelton West school will be 125 years old this year. A reunion is being planned to be held on Sunday 21st October 2012 [Labour Weekend]. Anyone interested in helping should contact Rita Norris or the school secretary on 328 8369.

## combined church service

Since the deconstruction of Lyttelton's historic churches you may not have heard that Lyttelton hosts a combined church service every Sunday morning at 10.00am at the St Joseph's Community Centre, 21 Exeter Street, Lyttelton. All residents welcomed.

**sunday 10am : st joseph's community centre**



# “lyttelton harbour vibe”

May 2012

## May

<b>08</b>	Emerging Musical Talent	7.30pm	Wunderbar, London Street	Open Microphone Night   Free
<b>08</b>	D.Harbour Historical Assoc	7.30pm	D.Harbour Community Hall	Contact Jan: bstudholme@xtra.co.nz
<b>09</b>	Weekly Shopping Bus	1.00pm	Lyttelton Community House	7 Dublin Street 03 741 1427
<b>09</b>	CCC Draft Annual Plan	2.00pm-6.00pm	Lyttelton Club, Dublin Street	Chat to Council About Rate Increases Etc
<b>09</b>	Plenty to Share	3.00pm	Cnr London and Canterbury	Bring, Exchange and Share Food
<b>09</b>	Mask Making Workshop	7.00pm	Private Address, Lyttelton	Juliet 03 328 8558   Small Charge
<b>09</b>	Marlon Williams Live	8.00pm	Porthole Bar, London Street	Live Music Wednesday   Free
<b>10</b>	Community Board Chat	5.00pm	Lyttelton Library, London St	Meet and Chat with Board Members
<b>10</b>	Earthsong Eco Neighbourhood	5.00pm	Naval Point Yacht Club	Talk: Co-Housing Model   Free
<b>10</b>	Al Park Live	8.00pm	Porthole Bar, London Street	Live Music Thursday   Free
<b>11</b>	Unfaithful Ways; Devilish Mary	8.00pm	Naval Point Yacht Club	Chartfest: NZ Music Month   Free
<b>12</b>	Woolfun at Bergil Farm	10.00am	Bergil Hill Farm, Teddington	265 Charteris Bay Road   03 329 9118
<b>12</b>	Lyttelton Farmers Market	10.00am	Lyttelton Main School	Fresh produce direct to you
<b>12</b>	Lyttelton Garage Sale	10.00am	The Portal, Oxford Street	Second Hand Bargains and More
<b>12</b>	Grassy Market	10.00am	The Grassy, Oxford Street	Art, Craft and Bric-a-Brac
<b>12</b>	Gypsy Jazz - Bob Heinz & Co	11.00am	Lyttelton Library, London St	NZ Music Month   Free
<b>13</b>	Combined Church Service	10.00am	St Josephs Community Centre	21 Exeter Street   All welcome
<b>13</b>	Live Jazz Sundays	3.00pm	Freemans, London Street	Carmel Courtney Live   Free
<b>13</b>	Sunday Night Live Music	6.00pm	Lyttelton Club, Dublin Street	Featuring Lindon Puffin   Free
<b>13</b>	Sunday Night Live Music	7.00pm	Porthole Bar, London Street	\$5 Bubbles for Mum   Music Free
<b>15</b>	Community Board Meeting	12.30pm	D.Harbour Community Hall	Waipapa Avenue
<b>15</b>	Helln'Back Experience	8.00pm	Porthole Bar, London Street	Live Poetry, Music, Mic Night   Free
<b>16</b>	Weekly Shopping Bus	1.00pm	Lyttelton Community House	7 Dublin Street 03 741 1427
<b>16</b>	Plenty to Share	3.00pm	Cnr London and Canterbury	Bring, Exchange and Share Food
<b>16</b>	Mask Making Workshop	7.00pm	Private Address, Lyttelton	Juliet 03 328 8558   Small Charge
<b>16</b>	Marlon Williams Live	8.00pm	Porthole Bar, London Street	Live Music Wednesday   Free
<b>17</b>	Al Park Live	8.00pm	Porthole Bar, London Street	Live Music Thursday   Free
<b>18</b>	“Old” Lyttelton Locals	6.00pm	Lyttelton Club, Dublin Street	Night to Share Memories
<b>19</b>	Lyttelton Farmers Market	10.00am	Lyttelton Main School	Fresh produce direct to you
<b>19</b>	Lyttelton Garage Sale	10.00am	The Portal, Oxford Street	Second Hand Bargains and More
<b>19</b>	Grassy Market	10.00am	The Grassy, Oxford Street	Art, Craft and Bric-a-Brac
<b>20</b>	Combined Church Service	10.00am	St Josephs Community Centre	21 Exeter Street   All welcome
<b>20</b>	Live Jazz Sundays	3.00pm	Freemans, London Street	Carmel Courtney Live   Free

## Lyttelton Harbour Network

For news, events, and what is open or closed around the Harbour Basin, don't forget to visit:

Diamond Harbour Information  
Governors Bay Information

[www.diamondharbour.info](http://www.diamondharbour.info)  
[www.governorsbay.net.nz](http://www.governorsbay.net.nz)

# “c'mon get involved”

May 2012

## Lyttelton Harbour

### Civil Defence

New members welcome. Meet second Monday of every month, 7.00pm St Johns Ambulance Station, London Street. To become involved contact the Area Co-ordinator Julie Lee on 03 328 7779 or 027 739 1832. \*Please phone Julie about change of location for May Meeting.

### Community Garage Sale

All donations of good used, or new, household items greatly accepted at Project Lyttelton 54a Oxford Street. Please do not donate items that cannot be sold, as this increases our costs trying to take unwanted items to the charity barn, or worse still the rubbish depot.

### Lyttelton Community Association

New members welcome. As an issues based organisation, we do not hold regular meetings. If you would like to be advised of when the next meeting will be held, or have an issue to discuss, please email us at [LCAssn@vodafone.co.nz](mailto:LCAssn@vodafone.co.nz) or phone Ken Maynard 03 328 9553.

### Lyttelton Community House

Meals for the elderly continue to be prepared and delivered daily. If you know of any elderly residents who need this service, or would like to volunteer to assist, please contact Christine or Courtenay 03 741 1427.

### Lyttelton Harbour Business Association

For more details visit: [www.lytteltonharbour.co.nz](http://www.lytteltonharbour.co.nz)

### Lyttelton Harbour Information Centre

Monday to Friday 11.00am to 3.00pm; Saturday 10.00am to 1.00pm; Sunday 11.00am - 2.00pm.

### Lyttelton Harbour/Whakaraupo Issues Group

Initiatives for improving the environment and harbour water quality have been successful and are ongoing as part of a larger habitat recovery goal. New members welcome. Contact Claire Findlay 328 8930 or Melanie Dixon 328 9908.

### Lyttelton Lions

Meet on the 2nd Tuesday of each month at Community House at 7.30pm. Anyone interested in becoming involved, or anyone who would like to learn more about this organisation, is most welcome. Contact Mary Jamieson 03 328 8523.

### Lyttelton Historical Museum Society

Lyttelton Museum committee is developing a concept plan for the re-building of Lyttelton Museum. Meetings held once a month. New members, donations or any other support is welcomed. Lyttelton Museum, PO Box 95, Lyttelton. 328 8972 [lytteltonmuseum@xtra.co.nz](mailto:lytteltonmuseum@xtra.co.nz)

### Lyttelton Time Bank

Either Bettina, Jen or Lisa will be at the Lyttelton Harbour Information Centre every Tuesday, Wednesday, Thursday, and Friday 9.00am to 11.00am; Tuesday and Thursday 4.00pm to 6.00pm. Phone: 021 806 406 or email the team at [timebank@lyttelton.net.nz](mailto:timebank@lyttelton.net.nz)

### Lyttelton Youth Centre

Youth Centre/Community House, 7 Dublin Street, Lyttelton. Contact Christine 03 741 1427 for further details.

### Plunket Playgroup

The Plunket Playgroup can be found at Lyttelton Main School, every Monday and Wednesday, 10.00am to 12noon. 50 cents donation and everyone is welcome. Contact Lisa York-Jones 03 328 8918 for more information.

### Project Lyttelton

The Portal, 54a Oxford Street, Lyttelton [located behind the Swimming Pool]. Office 03 328 9243.

### Toy Library

With the closure of the Lyttelton Recreation Centre, please contact Roz Jenkins 03 328 8552 for further information.

### Volcano Radio

Currently - Off Air



# “ business directory ”

May 2012

## Lyttelton

Abbraccia Bellydance	41 Voelas Road [West School]	03 328 8883	Paige 021 999 848
Acupuncture Therapy	18 Oxford Street	03 328 9053	Robin Kerr
Alexander Technique	Private Address	03 328 8968	Belinda Walker
Bank of New Zealand	56 London Street	0800 80 04 68	Trish, Kelly, Donna
Banks Peninsula Accounting	PO Box 83, Lyttelton	03 328 7231	Chris 021 280 0086
Beauty by Carly	Private Address	Private No.	Carly 021 294 5676
Bells Pharmacy	50 London Street	03 328 8314	
Choice Take Home Dinners	20 London Street	03 328 8784	Available 5.00 - 6.00pm
Christchurch Council Service Centre	35 London Street	03 941 8999	Debbie/Patricia
Coastal Living / Picture Framers	34 London Street	03 328 7350	
Coffee Culture	18 London Street	03 328 7080	
Diamond Harbour Ferry	B Jetty, Lyttelton Wharf	03 328 9078	
Dockside Apartments	22 Sumner Road	03 325 5707	Grant / Kathy
Fishermans Wharf	39 Norwich Quay	03 328 7530	
Freemans Restaurant	47 London Street	03 328 7517	
Frog Web Works	14 Winchester Street	Private No.	Graeme 027 473 5018
Four Seas Restaurant	23 Dublin Street	03 328 8740	
Ground   Gourmet Foods, Catering	Lyttelton Farmers Market	Private No.	Jenny 022 476 8633
Himalaya Design	20 London Street	03 328 7600	Wed-Sun 10.00am - 4.00pm
It's Indi	2 London Street	03 328 8185	
Jack Tar Sailing	West Side, No.7 Wharf	03 389 9259	Mike Rossouw
London Fish and Chips	34 London Street	03 328 8819	
London Street Books	48 London Street	03 328 8088	Thurs-Sun
London Street Dairy	34 London Street	03 328 7358	Open 7 Days
Leslies Bookshop	18 Oxford Street	03 328 8292	
Lyttel Beauty	32 Voelas Road	03 328 7093	www.lyttelbeauty.co.nz
Lyttel Piko	12 London Street	03 328 8544	
Lyttelton Bakery	34 Norwich Quay	03 328 9004	
Lyttelton Builders Limited	56 London Street	03 328 9305	Peter 021 862 537
Lyttelton Harbour Information Centre	65 London Street	03 328 9093	
Lyttelton Library	35 London Street	03 941 7923	
Lyttelton Health Centre	18 Oxford Street	03 328 7309	
Lyttelton Physiotherapy	18 Oxford Street	03 328 8111	
Lyttelton Recreation Centre	25 Winchester Street	03 941 5656	
Lyttelton Sea Foods	26 Norwich Quay	03 328 7628	
Lyttelton Service Station	1 Canterbury Street	03 328 8749	
Lyttelton Shuttle	Airport, City, Anywhere	0800 08 07 06	
Lyttelton 'Top' Club	23 Dublin Street	03 328 8740	
Mac Todd Solicitors	24 Dublin Street	03 328 9992	
Min Sarginson Real Estate	53 London Street	03 328 7273	
Mondo Vino	42 Norwich Quay	03 328 7744	
PedalOn Bicycle Service	2 Exeter Street	03 328 9246	021 055 6865
Porthole Bar	40 London Street	Private No.	Mike 021 328 977 [Tue-Sun]
Portico	48 London Street	03 328 8088	Tue-Sun 10am - 4pm
Professionals Real Estate	36 London Street	03 328 7707	Lynnette 021 224 6637
Project Lyttelton Office	54a Oxford Street	03 328 9243	Sue-Ellen

.../ Continued

# “ business directory ”

May 2012

## Lyttelton [continued]

Ray White Real Estate	47 London Street	03 331 6757	Marie   Daisy
Roots	Private Address	Private No.	Christy   Guilio 021 120 8083
SAMO Coffee	3 Canterbury Street	Private No.	Open 7 Days
Sno Clothes	23 Randolph Terrace	03 328 8584	Heather
Storm Hairdressing	34 London Street	03 328 8859	Sally
The Rookery	Ross Terrace	03 328 8038	Angus   Rene
View Hairdressing	Private Address	Private No.	Megan 027 488 5173
Volcano Radio	Private Address	03 328 8566	

## Governors Bay

Governors Bay Hotel	52 Main Road	03 329 9433
She Chocolat	79 Main Road	03 329 9825
Living Springs	Bamfords Road	03 329 9788

For news, events, and what is open or closed in Governors Bay, visit: [www.governorsbay.net.nz](http://www.governorsbay.net.nz)

## Diamond Harbour

Bronwen Jones– Writing and PR Services	Rawhiti Street	03 329 4303	<a href="http://www.bronwen-jones.com">www.bronwen-jones.com</a>
Chalfont Cafe   D.Harbour Country Store	2 Waipapa Avenue	03 329 4854	Open 7 Days till 5.30pm
Diamond Harbour Ferry	Waipapa Avenue	03 328 9078	
Orton Bradley Park	Marine Drive	03 329 4730	
Snowdrop Cottage Children's Store	Waipapa Avenue	03 329 4464	Open 7 Days 9.00am - 5.00pm
Diamond Harbour Medical Centre	2a Waipapa Avenue	03 329 4402	

For news, events, and what is open or closed in Diamond Harbour, visit: [www.diamondharbour.info](http://www.diamondharbour.info)

# “ meeting venues ”

May 2012

Diamond Harbour Community Hall	Hall	Waipapa Avenue	Diamond Harbour	03 329 4119
Diamond Harbour Community Hall	Stage Room	Waipapa Avenue	Diamond Harbour	03 329 4119
Orton Bradley Park - Boardroom		Marine Drive	Diamond Harbour	03 329 4730
Governors Bay Hotel		52 Main Road	Governors Bay	03 329 9433
Living Springs		Bamfords Road	Governors Bay	03 329 9788
Black Cat - Canterbury Cat	Catamaran	B Jetty, Lyttelton Wharf	Lyttelton	03 384 0621
Lyttelton Club “Top Club”	Meeting Room	23 Dublin street	Lyttelton	03 328 8740
Lyttelton Harbour Info Centre	Boardroom	65 London Street	Lyttelton	03 328 9093
Naval Point Yacht Club	Wardroom	Naval Point	Lyttelton	03 328 7029
Project Lyttelton	Meeting Room	54a Oxford Street	Lyttelton	03 328 9243



# “accommodation”

May 2012

## Lyttelton

- **Dockside Apartments.** Three private apartments enjoying harbour views, now open and available for casual holiday or short term occupancy. Scenic and so close to London Street, this is an ideal option for friends or family to stay. Options range from studio; one bedroom or two bedroom apartment. Tariff from \$90 - \$120 per night. Phone Grant or Kathy on 03 325 5707 or view more details online [www.dockside.co.nz](http://www.dockside.co.nz).
- **Randolph Apartment.** Private two bedroom modern apartment with superb views across Lyttelton and inner harbour is now available for holiday or short term accommodation. Apartment features private spa, bar-b-que area, off street parking for one vehicle, and all the mod-cons including WIFI and MySky television. Tariff from \$120.00 per day, with minimum three night stay. Longer term rates available. Phone Heather 03 328 8585 or 03 328 8584.
- **The Rookery.** Built in 1866 The Rookery Bed and Breakfast is one of the oldest surviving local cottages, with wonderful panoramic views of the historic port town of Lyttelton, the main harbour, Quail Island, surrounding hills and volcanic cliffs. Three beautifully renovated rooms are available; one with ensuite facilities. Tariff from \$115 - \$160 per night. Phone Angus or Rene Macpherson on 03 328 8038 or view more details on line [www.therookery.co.nz](http://www.therookery.co.nz).

## Diamond Harbour

- **Diamond Harbour Lodge** is the perfect place to relax, enjoy and unwind. Offering harbour sea views, spacious rooms, TV/DVD, CD player, large selection of books, board games, free wireless internet, fridge, toaster, jug, microwave, sink, selection of tea, complimentary cookies, electric blankets, underfloor heating in bathroom, heated towel rail, linden leaves toiletries, towelling bath robes. Robyn and Pete Hedges 3 329 4005 or visit [www.diamondharbourlodge.co.nz](http://www.diamondharbourlodge.co.nz)
- **Mt Evans Bed and Breakfast** offers accommodation in two self contained cottages. Quiet rural setting only 500m from the beach. For further information contact Pauline 03 329 4414 or visit [www.mtevansbnb.co.nz](http://www.mtevansbnb.co.nz)
- **The Old Exchange Bed and Breakfast** right in the heart of the Village at 2 Waipapa Avenue. Two queen sized bedrooms with ensuite bathrooms, own private entrance, sea views and within walking distance of the Ferry. Contact Jill 03 329 4275 or 027 482 6014.
- **Orton Bradley Park** offer self contained camper van sites for overnight stays. Services include 15 powered sites; treated drinking water; toilet blocks and dump site, with the golf club and tennis court next door. Fees start from \$15.00 per night for two persons, with additional adults at \$6.00 per night. Contact 03 329 4730.

## Governors Bay

- **Governors Bay Bed and Breakfast** offers a place to relax and rejuvenate on nine acres to bush side paradise beside the harbour. Enjoy breakfast on the deck while listening to the native bird song. Furnished room with ensuite bathroom and separate sitting area also available for short term rent for those seeking emergency accommodation. For more details contact Eva on 03 329 9727, or view on line [www.gbbbedandbreakfast.co.nz](http://www.gbbbedandbreakfast.co.nz).
- **Governors Bay Hotel** has been restored to it's former glory and offers six guest rooms located on the first floor level. All rooms recently renovated with 32 inch flat screen televisions, queen size beds, free wifi broadband, heaters, electric blankets and vanities. Four of the rooms have direct verandah access through French doors opening out onto a balcony with wonderful views over the Lyttelton harbour. Contact the Governors Bay Hotel on 03 329 9433 or view more details on line: [www.governorsbayhotel.co.nz](http://www.governorsbayhotel.co.nz).
- **Living Springs** offer an array of accommodation options from fully service private rooms, studios, twin rooms, shared bunkrooms to outdoor camping. Also available are some powered caravan sites. All rooms are clean, comfortable and well maintained for your relaxation. Contact Living Springs on 03 329 9788 or view more details on line: [www.livingsprings.co.nz](http://www.livingsprings.co.nz).

# “real estate review”

May 2012

## Building in Lyttelton?

Part Two: Banks Peninsula District Plan

Land across Lyttelton and the wider Banks Peninsula area is developed under guidelines within the Banks Peninsula Proposed District Plan. A full copy of the District Plan can be accessed from the Christchurch City Council web site: [www.ccc.govt.nz](http://www.ccc.govt.nz) and by entering the search criteria “banks peninsula district plan”. The Banks Peninsula District Plan comprises seven parts; twenty three appendix documents; a range of planning maps; and all up around forty one chapters. While it is not light reading, it does comprehensively explain what factors and guidelines you need to consider when building in Lyttelton.

The Banks Peninsula District Plan starts with a Vision Statement, and within a few short pages, outlines some fundamental guiding principles, including: we should sustain what sustains us; every privilege has its obligations; the past has a place in the future and it is better to innovate than frustrate.

If you are looking at building in Lyttelton then understanding the issues and obligations discussed in the District Plans Vision Statement, will help you immensely when it comes to designing any new dwelling:

“Peninsula settlements of Lyttelton and Akaroa are unique in Canterbury. Both still retain much of their nineteenth century origins and character. Narrow streets, small houses and colonial architecture are essential elements of both. To ensure these features are not lost or overwhelmed, the past must be respected. In historic areas of both settlements new buildings should not overwhelm or ignore those already there. The privilege of enjoying these unique communities brings with it a responsibility to ensure the new complements the old.”

In identifying areas of significance, and to develop guidelines around appropriate development, the Banks Peninsula District is divided into several planning zones. Within the Lyttelton township boundaries, and when building a residential home, the primary land zones to be aware of include: Residential; Residential Conservation; Rural; Recreation Reserve; Town Centre and Industrial. To find out what planning zone your property is located within, Settlement Maps can be downloaded from the Council web site, or should be available for viewing from the Council Service Centre.

Why is it important to know your zone? Because these zones will primarily determine what you can build, or how you can develop your parcel of land. For example: rules surrounding the maximum number of dwellings per square metre; how high you can build; how many car parking spaces you need to design for and even what colours you paint your home will all be covered depending on your land zone.

Before you start to think about rebuilding, spend some time down at the local Council Service Centre, or hop on line at [www.ccc.govt.nz/thecouncil/policiesreportsstrategies/districtplanning/bankspeninsula/bpdplistofpdfs/index.aspx](http://www.ccc.govt.nz/thecouncil/policiesreportsstrategies/districtplanning/bankspeninsula/bpdplistofpdfs/index.aspx) to learn more about what you could be permitted to build within the guidelines of the district plan.

Need advice, you can always chat to me:

**Lynnette Baird**

Licensed Real Estate Agent REAA 2008

*Your real estate Professional*



**Lynnette Baird**

**P: 03 328 7707 M: 021 224 6637**

**E: [lynnette@realhomes.co.nz](mailto:lynnette@realhomes.co.nz)**

**W: [www.realthomes.co.nz](http://www.realthomes.co.nz)**



**Professionals**

Kennard Real Estate Limited MREINZ  
[www.kre.co.nz](http://www.kre.co.nz)