

“lyttelton review”

lyttelton harbour community update

www.lytteltonharbour.info

16 April 2012
E37

Lyttelton Village WiFi Project

Becomes a Reality | Thanks to InternetNZ and TradeMe

Lyttelton's Draft Master Plan is a good place to start when trying to identify projects that can benefit the recovery of the Lyttelton township. During the Master Plan process, numerous residents and businesses highlighted that free access to the internet in the town centre would be something that would attract more people down to the main street and make Lyttelton feel more vibrant and alive again. Businesses in particular believe that Wi-Fi access will encourage more people to enjoy the cafe and dining experiences that are now open; more foot traffic on the pavement will encourage more retail; and thus recovery and economic stimulation can begin for our urban village.

With this in mind the Lyttelton Harbour Information Centre started to look for Wi-Fi opportunities and in November 2011 submitted an application to InternetNZ who were offering a once only grant opportunity to help the Christchurch area rebuild from the earthquakes. Just in case you haven't heard of Internet New Zealand Incorporated, they are a non-profit open membership organisation dedicated to protecting and promoting the internet in New Zealand. Their primary objective is "high performance and unfettered access for all" so the Internet continues to operate in an open environment that cannot be captured by any entity or individual for their own ends.

After an initial expression of interest the Lyttelton Harbour Information Centre began a long process in collaboration with other grant submitters in the wider Christchurch area. In the end a focused project team of Wendy Everingham, Lynnette Baird and Phillip Baird work collectively with the Sydenham Business and Community Association plus company owners and representative from Telco2 Limited, ServerWorks, Wireless Web and indirectly with TradeMe.

The end result has been a \$37,000 grant from Internet NZ for the Lyttelton and Sydenham communities to install the necessary equipment to enable parts of London Street, Lyttelton and Colombo Street, Sydenham to provide internet access for a period of up to three years. The actual free internet service will be provided by TradeMe, who are also providing this service in the Re:Start Cashel Mall. TradeMe are in a fortunate position of having spare bandwidth capacity so while it is quite cost effective for them, it is exciting to learn that the TradeMe team are willing to help support Lyttelton and Sydenham in this business and community recovery project.

It is the aim of the Lyttelton Harbour Information Centre that this project will continue to operate into the future on a self funded basis. As local businesses and the community gets back on its feet, and the system has proven to be effective, it is envisaged that sponsorship of the project will see this service continue to be provided beyond the initial three year period. The next step is to tender the installation work and it is believed that in the next couple of months the Lyttelton Village Wifi Project will be up and running.

Article: Lyttelton Harbour Information Centre
Image: iStock.com



about the lyttelton review

Lyttelton Review is a community newsletter initiative developed by local Professionals real estate agent Lynnette Baird and Lyttelton Harbour Information Centre chairperson Wendy Everingham. The objective of the Lyttelton Review is to help keep local residents informed with what is going on in Lyttelton and the wider Lyttelton Harbour community. Each week readers can read about community groups; businesses; events; and everything in between. Ultimately we are a collective of vibrant, like minded, unpaid volunteers striving to give an independent, and uncensored voice. If you have an event, topic, cause, or other, that you would like to share with the harbour community, then we would love to hear from you. Be heard, be seen, be informed - read it or offer it here.

Matariki Celebration 2012

Rapaki Pā | Sunday 2 June

What is Matariki? Matariki is the Maori name for the group of stars also known as the Pleiades star cluster or The Seven Sisters; and what is referred to as the traditional Maori New Year. The Maori new year is marked by the rise of Matariki and the sighting of the next new moon. The pre-dawn rise of Matariki can be seen in the last few days of May every year and the new year is marked at the sighting of the next new moon which occurs during June.

Why is Matariki important? Traditionally, depending on the visibility of Matariki, the coming season's crop was thought to be determined. The brighter the stars indicated the warmer the season would be and thus a more productive crop. It was also seen as an important time for family to gather and reflect on the past and the future. Today Matariki means celebrating the unique place in which we live and giving respect to the land we live on.

Rapaki Pā will come alive for Matariki with a series of events focused around this year's theme: the celebration of cultural diversity through the sharing of dance and music on Sunday 2nd June, from 10.00am to 2.00pm. Experience a family day of entertainment, interactive participation, sharing, and fun.

The Rapaki Pā wishes to extend a warm invitation to all cultural dance and music groups around the Lyttelton Harbour basin, so if you are a Morris, Belly, Highland, Kapahaka or School band or any other cultural group, they would love to hear from you. The day will begin with a Pōwhiri, at 10.00am then the dance groups and music groups will perform on an outdoor stage set in a marquee.

Matariki is about sharing kai too and Rapaki Pā would like invite Community groups who would like to do some fundraising to hold food stalls at this event. All stall holders would need to provide their own tables, heating etc and be responsible for setting up, manning and packing up.

To register your interest in either performing and/or holding a food stall please contact Wendy at Lyttelton Community House. Phone 741 1427 or email wendy@lytteltoncommunityhouse.org.nz

Article: Lyttelton Community House
Image: www.wcl.govt.nz

contact the lyttelton review

The team at the Lyttelton Review would love to spread the word about your community group, fundraising efforts, local heroes, business promotions, events and anything else that the local community would like to share. Published every Monday, but as the Lyttelton Review is a community publication we ask for any content to be submitted by the Friday before publication. Please contact one of our roaming volunteer reporters to share your story, or post any information to the Lyttelton Review, PO Box 94, Lyttelton 8841.

Lynnette Baird

03 328 7707

021 224 6637

lynnette@realhomes.co.nz

Wendy Everingham

03 328 9093

021 047 6144

infocentre@lyttelton.net.nz

“View” Hairdressing

New Home Based Business

Lyttelton is lucky. Megan Jamieson has decided to mix her hairdressing teaching at Avonmore College with a new home based hairdressing business. Trying to get a better quality of life is the catalyst for the change. “After having a full time job and juggling the needs of my children this will make our life much calmer” Megan said.

It’s great to see how helpful Megan’s friends have been to make this happen. Her landlord is a good friend so permission to turn the front room into a salon was easy. A good deed done by Megan for neighbour Shaun Weatherall, now sees all her advertising material being produced pro bono. Shaun has been getting free storage in Megan’s garage since the quakes so in return via his business hulk.co.nz he is supporting all of her advertising needs.

This is the side to Lyttelton that is so fabulous: friends and neighbours just helping one another to make things happen. Megan also has good words to say about the Christchurch City Council and how helpful they have been with home based hairdressing businesses all over the city. “Things are just all falling into place, it feels good” she says.

Megan’s new business is called “View”. It will be open Thursday and Friday during school hours. The business is aimed at locals and customers from the “East” whose salons have been lost.

Megan particularly likes a treatment called Keratin Complex. “In the normal rush of a salon this treatment is quite complex and it’s difficult to juggle with other customers”, she says. Megan believes that in this home based business, this treatment will work well as she will have the time to spend on this longer treatment, and in between she’ll be able to do home based chores.

Contact View Hairdressing: Megan 027 488 5173

Bookings are by Appointment

Conveniently located in Winchester Street: just an easy stroll away.

Article: Lyttelton Harbour Information Centre

Image: Lyttelton Harbour Information Centre



Lynnette Baird Licensed Real Estate Agent

P: 03 328 7707 M: 021 224 6637

E: lynnette@realhomes.co.nz

W: www.realhomes.co.nz



Professionals

Kennard Real Estate Limited MREINZ
www.kre.co.nz

subscribe to the lyttelton review

The Lyttelton Review is published every Monday and can be delivered straight to your email inbox. Just send an email with the words "subscribe me" in the subject line, then sit back and wait for the next instalment of local news, events and reviews.

If you do not have access to email, but would like read about our local events, Professional Real Estate print hard copies that are available from Thursdays at the Lyttelton Club on Dublin Street; Samo Coffee on Canterbury Street or Fisherman's Wharf on Norwich Quay. Alternatively a copy can be delivered to your door, if you live in within the Lyttelton township. Just contact Lynnette on 03 328 7707.

Lyttelton Treasures

Saving Small Pieces of Our Historic Past

Whilst so much of our treasured historic core is gone, we are lucky some locals have been keeping an eye out for treasures that can be saved. David Bundy, who many of you will know for his efforts in saving heritage buildings, is one local who has been keeping an eye out for special things that can be preserved. David started talking to the Lyttelton Port Company when the Forbes Building in Norwich Quay was being demolished. He wanted to save the entrance way tile mosaic. In his opinion it was easy to save, repair and mount. "As a boy I was fascinated with the tiles as I used to walk past", he said. David contacted the company, discussed the significance of the work and the Lyttelton Port Company arranged for the mosaic to be lifted by the demolition contractors. The tiles were left at the back door of his Telegraph Office in Norwich Quay.



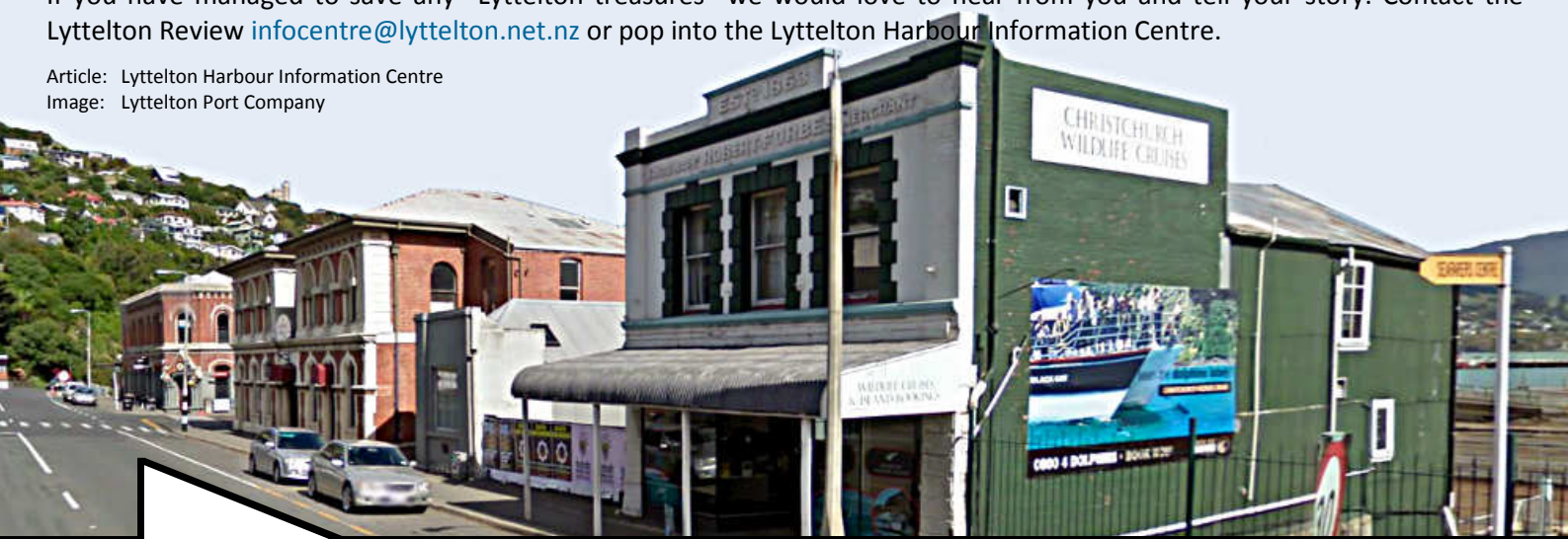
By the time you read this article they will have been collected and transported to Wigram and added to the storage container of Lyttelton Historic treasures. An archaeological dig was commissioned by the Port Company soon after demolition however this site did not yield any more treasures for Lyttelton. In case you weren't aware the Forbes Building has been used for many activities over the years. It was a base for a sail making business, a hardware shop, ships chandler and grocery and in recent times the office for the Black Cat group. It was originally established by Robert Forbes. The site also links Lyttelton to one of the nations former Prime Ministers. George Forbes was the son of the stores founder Robert. He was Prime Minister of New Zealand from 1930 -1936.

David also worked with Winsome Dormer, Dormer Construction and Independent Fisheries to save the attractive reverse painted panel and entrance doorway from the Royal Hotel. That has also gone into storage. This was a delicate operation and was only possible by the extra effort the construction company went to. The last treasure David talks about came from Stewart Stevens building, Norwich Chambers, 16 Norwich Quay. Stewart saved the 1878 dated keystone.

If you have managed to save any "Lyttelton treasures" we would love to hear from you and tell your story. Contact the Lyttelton Review infocentre@lyttelton.net.nz or pop into the Lyttelton Harbour Information Centre.

Article: Lyttelton Harbour Information Centre

Image: Lyttelton Port Company



calling all community groups

The Lyttelton Review has been designed to help keep Harbour residents informed. It is a tool to be used for sharing information, and is widely circulated across residents, business and media contacts. A great way to find out what has happened during the year from our community organisations is to read their Chairpersons AGM summaries. If you would like to share your AGM reports, or any other information as required. with the wider community we'd love to hear from you.

free weekly shopping bus

Lyttelton Community House are using their community van for a weekly shopping run into town for Lyttelton residents without easy travel alternatives to supermarkets. They will be going to New World South City and Pak n Save. So if you find transport to your weekly shop to be a challenge, the Lyttelton Community House encourage you to utilise this service. Every Wednesday 1.00pm Lyttelton Community House, 7 Dublin Street, Lyttelton. Contact Courtenay 03 741 1427.

Harbour Co-Op

Membership Update

Membership applications have been open for two weeks now, and the Harbour Co-Op has raised about \$27,000 so far. This is just over half of the money needed to purchase the Lyttel Piko business and transfer it into the Harbour Co-Op. If you are thinking about joining the Co-op but haven't done so yet, please get your application in to us as soon as possible. As soon as 150 members join the Co-Op, the sooner the Harbour Co-Op can purchase the Lyttel Piko business and start trading. If you need an application form and investment statement, you can download a copy from our website, or pick up a copy at the Lyttel Piko shop. If you have any questions, email us at info@harbourcoop.co.nz, or drop by the Lyttel Piko shop for a chat.

Article: Lyttelton Harbour Co-Op

Mudslide Damages Power Substation

Orion Manages to Keep the Power On

A mudslide in above Simeon Quay damaged Orion's substation following heavy rain fall last week. The substation supplies power to 1000 customers, including the Lyttelton port. *"At this stage, the damage to the wall and roof of the substation building has not affected the electrical equipment inside, so power will remain on,"* says Orion Chief Executive Rob Jamieson.

If power goes out due to damage at the substation, there will be a two step process to restore power to the 1000 affected customers. First, diesel generators will be put in place to supply power where possible. Secondly, Orion contractors will dig up and cut existing underground power cables to reconfigure the network and get electricity into the area. Orion will provide a further updates if the situation changes.



just a small note

Not everyone receives these news letters, so please pass them onto anyone you think would be interested. We can also arrange printed copies for interested parties - just let us know. A big thank you to everyone who emails us with what is happening in their part of Lyttelton Harbour paradise. If you have news, or belong to a community group, own a business - get in contact with us, we would love to promote or share your story with the Lyttelton Harbour district. Errors, Omissions and Typos are all part and parcel of a volunteer service. These quirky additions are offered free for your amusement. But, if we have "got it wrong" - please just let us know.



lyttelton club restaurant

Open Thursday to Sunday 5.00pm to 9.00pm
 \$15 roast dinners | Children under 10 dine free Thursday and Sunday
 One child per paying adult *conditions apply

everyone welcome

\$15 Roast Dinners

Free Fun Kids Entertainment

Lyttelton Fun for Kids This Weekend

A donation has been made via the Toy Library Federation of New Zealand to enable Lyttelton children to have a fun event. There will be entertainment aimed at 2-6 year olds with Craig Smith, the musician/author behind 'Wonky Donkey', performing his popular songs. A fairy face painter may also be found floating around. Come along!

When: Saturday April 21st, 12.30-2pm

Where: Grassy flat behind the Craft and Art Market, Oxford St, Lyttelton
 NB: outside event may unfortunately be cancelled if wet

Contact: nicole.moffat@canterbury.ac.nz



Tin Palace Art Exhibition

Photography by Holly Best

The Tin Palace is pleased to announce its new Art exhibition opening this Friday evening and running for one week only. An exhibition of photography by Holly Best at the Tin Palace 13a Oxford street, Lyttelton until Friday 20th April 2012. Please support us in continuing to keep the Tin Palace as a creative and changing space in Lyttelton; by joining us for drinks in celebration of the works of Holly Best.

The Tin Palace, Oxford Street, Lyttelton
 Monday 16th April to Friday 20th April, 3.00pm to 7.00 pm



Civil Defence Welfare Centre

New Welfare Centre Location

Civil Defence Emergency Welfare Centre is now located at the Lyttelton Main School on Oxford Street, until further notice. Civil Defence meets every second Monday of every month, 7.00pm St Johns Ambulance Station. Contact the Area Co-ordinator Julie Lee on 03 328 7779 or 027 739 1832.



bells pharmacy for digital photo prints

If you have school holiday snaps, or have been putting off getting those digital images printed, then don't want any longer! Head down to Bells Pharmacy, 50 London Street, Lyttelton and order your 6"x4" or 5.3"x 4" images at just 12cents each. But don't wait as this offer only lasts until the end of April.



looking for reading material

A book swap has been operating from the Lyttelton Harbour Information Centre for some time. Thank you to all the lovely residents who keep dropping books in. This service is available to all local residents, simply just pop in, choose a book, and then return it or another when you are finished. Borrow or swap - it's your call.

If you are looking for reading material on economics, the transition movement, sustainability, alternative currencies and community development then check out the LIFT Library that has recently started. Contact Juliet Adams on 328 8139 for more information.

Temporary Lifting of Fire Ban

Ban Lifted Until End of April

Christchurch City Council is temporarily lifting its ban on open fires in urban areas. The ban will be lifted from Thursday 5 April and will extend until Monday 30 April 2012. The ban is lifted in Christchurch City and its urban 'fire districts' including: Lyttelton, Governors Bay, Diamond Harbour, Little River and Akaroa. The lifting of the ban will end on Monday 30 April prior to the start of the Environment Canterbury Clean Air Winter Period fire ban, which prohibits the lighting of open fires by anybody in the Clean Air Zone and applies from 1 May to 31 August 2012.

Hey Mum! Need Some Time Out?

Nanny Share available Thursdays

Need a break or a chance to get a few chores done child free and quickly one day per week? Nanny Share available for one child, or possibly two siblings, for a full or part day on Thursdays. Suse O'Meagher is lucky enough to have Marcia Bryant [formerly a PORSE in home educator] look after her 18 month old, Ivy at home a few days per week. Suse is now looking to share that opportunity on a Thursday. Ideally a full day but can discuss a shorter day. If this sounds appealing, contact Suse O'Meagher to discuss 328 8488 or 021 373 893.

Timeball East Works

Rock scaling and meshing the rockface above Sumner Road between the intersection with Reserve Terrace and the locked gates on Sumner Road and adjacent to where the Timeball Station will now continue until approximately the end of April, due to additional work required to stabilise the rockface. The sound of drilling and possibly some blasting may be heard during the works. The remediation programme has been designed to minimise disruption to local residents. A section of the road between No.1 Reserve Terrace and No.61 Sumner Road may be closed for periods of up to 10 minutes while rock is scaled off the face and drilling work is being completed. If you have any questions please contact the undersigned or the site supervisor, Louis on cellphone 021 727 603. Geotech Ground Engineering.

Temporary Accommodation

Two to three bedroom recently renovated cottage for rent in upper central Lyttelton, with great views of the harbour, wood fire, bath, semi-furnished with fridge, stove etc. Available from the end April for eight weeks [possibly longer]. \$400 per week. Ph Dermot 03 328 9001 or 027 261 5093

lyttelton market town

Saturday mornings are never dull in Lyttelton! Enjoy the local markets including the Lyttelton Farmers Market for fresh produce, meat, fish, eggs, honey and yummy baked goods. Head up to the Grassy Art and Craft Market for bargain items or unique art items from creative local artists. Also be sure to check out the Community Garage Sale located up the driveway behind the swimming pool. The Garage Sale is a fundraising activity for any Lyttelton community group; so if you're not buying, feel free to donate items instead.

c'mon get involved

A few short weeks ago we crossed paths with a couple of Lyttelton residents who mentioned they would like to volunteer their skills and time to the community effort. One such individual works for a corporate organisation who could mobilise up to ten people as part of a corporate 'volunteer day' - if only they knew what was needed. So here is the call: if you belong to a community organisation and want something done; or if you are a Lyttelton resident and are looking to volunteer your skills on an adhoc basis, just drop us a line at the Lyttelton Harbour Information Centre, and we will see if we can connect a request from a community group, with a residents skill.



Network Waitangi Otautahi

Have You Heard About Them

Network Waitangi Otautahi's particular emphasis is on encouraging residents of Christchurch who do not have Maori ancestry to understand the Treaty of Waitangi. They are a voluntary, independent group, an educational incorporated society with charitable status that forms part of a wider national network of groups and individuals who are working towards a Treaty-based Aotearoa New Zealand. Katherine Peet from Mount Pleasant is the local contact for Lyttelton and she has trained quite a few people around this harbour on treaty issues. Project Lyttelton staff, contractors and associates will soon have the opportunity to participate in a course. Some of us believe that a treaty based future provides this community with an exciting framework for the future as we try to navigate our way forward from the impacts of the earthquakes.

At Network Waitangi's most recent annual general meeting in April this is how they see their role for the immediate future:

"Our role in Network Waitangi Otautahi is to help deepen understanding of the Treaty. We see the Treaty as the foundation upon which those of us who are not of Maori descent can justly have a place in this country. Judge Edward Durie has referred to such people as tangata Tiriti - people of the Treaty - who have been invited to share this country with tangata whenua. Pakeha, together with others who are not of Maori descent, work alongside tangata whenua within the framework of the Treaty. At the moment the Treaty is still understood by most people as being about Maori alone. In our experience, new migrants (especially those who have themselves experienced colonisation) find it straightforward to take a multicultural, Treaty-based approach, as do those who call themselves Pakeha. But this is not yet familiar to many others. The Treaty is both an invitation to share this land and the basis of our nationhood. This poses a particularly critical challenge to the state of the Pakeha nation in 2012. This is because Treaty relationships with tangata whenua are rooted in the recognition of mana whenua where the local context becomes critical for developing ways forward. In the Canterbury Earthquake Recovery Act Te Runanga o Ngai Tahu is recognised alongside the territorial local authorities and the regional council Environment Canterbury. We are currently awaiting the Canterbury Earthquake Recovery Authority's final strategy. We expect the Strategy to indicate how the territorial local authorities and our regional council will relate to each other and to CERA with respect to decision-making for the next period of recovery. How the Strategy includes collaboration with Te Runanga o Ngai Tahu will be interesting. The challenge will then be to see what opportunities there are for all citizens of Canterbury, including all Maori, to participate. Will the Treaty be named as a framework for the future?"

If you would like to explore what a Treaty based future means, there may be an opportunity for you to participate in the workshop with Project Lyttelton or to organize a separate training opportunity for your organization. For more information please contact Katherine Peet organisers@nwo.org.nz

This article contains excerpts directly quoted from the Network Waitangi Otautahi annual general meeting held in April 2012 and general information on Network Waitangi Otautahi and adapted from the annual general meeting.

Article: Project Lyttelton

Image: <http://maoriprintables.blogspot.co.nz/2011/04/maori-easter-eggs.html>



combined church service

Since the deconstruction of Lyttelton's historic churches you may not have heard that Lyttelton hosts a combined church service every Sunday morning at 10.00am at the St Joseph's Community Centre, 21 Exeter Street, Lyttelton. All residents welcomed.

sunday 10am : st joseph's community centre

“harbour events guide”

April 2012

April

All week:

An exhibition of photography by Holly Best at the Tin Palace 13a Oxford street, Lyttelton until Friday 20th April 2012. Head along one day this week to support the Tin Palace as a creative and changing space in Lyttelton.

17	Weekly Shopping Bus	1.00pm	Lyttelton Community House	7 Dublin Street 03 741 1427
17	LMH Community Board Meet	12.30pm	Living Springs, Allandale	Monthly Meeting Open to Public
17	Hell n Back Experience	8.00pm	Porthole Bar, London Street	Live Music, Poetry, Stories, Open Mic
18	Plenty to Share	3.00pm	Cnr London and Canterbury	Bring, Exchange and Share Food
18	Marlon Williams Live	8.00pm	Porthole Bar, London Street	Live Music Wednesday
19	Al Park Live	8.00pm	Porthole Bar, London Street	Live Music Thursday
20	Kindred Sound System	9.00pm	Wunderbar, London Street	Original Roots and Cub Music
21	Lyttelton Farmers Market	10.00am	Lyttelton Main School	Fresh produce direct to you
21	Lyttelton Garage Sale	10.00am	The Portal, Oxford Street	Second Hand Bargains and More
21	Grassy Market	10.00am	The Grassy, Oxford Street	Art, Craft and Bric-a-Brac
21	Fun Kids Entertainment	12.30pm	The Grassy, Oxford Street	Sing-a-long Face Painting and More
21	Boss Christ and Others	9.00pm	Wunderbar, London Street	Live Music Saturday Night
22	Live Jazz Sundays	3.00pm	Freemans, London Street	Carmel Courtney and Musicians Live
24	Weekly Shopping Bus	1.00pm	Lyttelton Community House	7 Dublin Street 03 741 1427
25	ANZAC Day Service Parade	9.45am	Corner London and Dublin	Parade London Street to Canterbury Street
25	ANZAC Day Service	10.00am	Lyttelton Petanque Ground	Cnr London Street and Canterbury Street

Winter might be fast approaching, but there is still plenty to do around Lyttelton.

If you have an event, be sure to tell us so we can post it here.

OOPS: Last Minute Request!

Greg is looking for a garage to rent in Lyttelton, to repair a 1969 Porsche 911E. Anything considered, but it is needed as soon as possible. If you can help, please email jodie.greg@xtra.co.nz or phone 328 7705 or 027415 7623.

Lyttelton Harbour Network

For news, events, and what is open or closed around the Harbour Basin, don't forget to visit:

Diamond Harbour Information
Governors Bay Information

www.diamondharbour.info
www.governorsbay.net.nz

“c'mon get involved”

April 2012

Lyttelton Harbour

Civil Defence

New members welcome. Meet second Monday of every month, 7.00pm St Johns Ambulance Station, London Street. To become involved contact the Area Co-ordinator Julie Lee on 03 328 7779 or 027 739 1832.

Community Garage Sale

All donations of good used, or new, household items greatly accepted at Project Lyttelton 54a Oxford Street. Please do not donate items that cannot be sold, as this increases our costs trying to take unwanted items to the charity barn, or worse still the rubbish depot.

Lyttelton Community Association

New members welcome. As an issues based organisation, we do not hold regular meetings. If you would like to be advised of when the next meeting will be held, or have an issue to discuss, please email us at LCAssn@vodafone.co.nz or phone Ken Maynard 03 328 9553.

Lyttelton Community House

Meals for the elderly continue to be prepared and delivered daily. If you know of any elderly residents who need this service, or would like to volunteer to assist, please contact Christine or Courtenay 03 741 1427.

Lyttelton Harbour Business Association

For more details visit: www.lytteltonharbour.co.nz

Lyttelton Harbour Information Centre

Monday to Friday 11.00am to 3.00pm; Saturday 10.00am to 1.00pm; Sunday 11.00am - 2.00pm.

Lyttelton Harbour/Whakaraupo Issues Group

Initiatives for improving the environment and harbour water quality have been successful and are ongoing as part of a larger habitat recovery goal. New members welcome. Contact Claire Findlay 328 8930 or Melanie Dixon 328 9908.

Lyttelton Lions

Meet on the 2nd Tuesday of each month at Community House at 7.30pm. Anyone interested in becoming involved, or anyone who would like to learn more about this organisation, is most welcome. Contact Mary Jamieson 03 328 8523.

Lyttelton Historical Museum Society

Lyttelton Museum committee is developing a concept plan for the re-building of Lyttelton Museum. Meetings held once a month. New members, donations or any other support is welcomed. Lyttelton Museum, PO Box 95, Lyttelton. 328 8972 lytteltonmuseum@xtra.co.nz

Lyttelton Time Bank

Either Bettina, Jen or Lisa will be at the Lyttelton Harbour Information Centre every Tuesday, Wednesday, Thursday, and Friday 9.00am to 11.00am; Tuesday and Thursday 4.00pm to 6.00pm. Phone: 021 806 406 or email the team at timebank@lyttelton.net.nz

Lyttelton Youth Centre

Youth Centre/Community House, 7 Dublin Street, Lyttelton. Contact Christine 03 741 1427 for further details.

Plunket Playgroup

The Plunket Playgroup can be found at Lyttelton Main School, every Monday and Wednesday, 10.00am to 12noon. 50 cents donation and everyone is welcome. Contact Lisa York-Jones 03 328 8918 for more information.

Project Lyttelton

The Portal, 54a Oxford Street, Lyttelton [located behind the Swimming Pool]. Office 03 328 9243.

Toy Library

With the closure of the Lyttelton Recreation Centre, please contact Roz Jenkins 03 328 8552 for further information.

Volcano Radio

Currently - Off Air

“ business directory ”

Lyttelton

April 2012

Abbraccia Bellydance	41 Voelas Road [West School]	03 328 8883	Paige 021 999 848
Acupuncture Therapy	18 Oxford Street	03 328 9053	Robin Kerr
Alexander Technique	Private Address	03 328 8968	Belinda Walker
Bank of New Zealand	56 London Street	0800 80 04 68	Trish, Kelly, Donna
Banks Peninsula Accounting	PO Box 83, Lyttelton	03 328 7231	Chris 021 280 0086
Beauty by Carly	Private Address	Private No.	Carly 021 294 5676
Bells Pharmacy	50 London Street	03 328 8314	
Christchurch Council Service Centre	35 London Street	03 941 8999	Debbie/Patricia
Coastal Living / Picture Framers	34 London Street	03 328 7350	
Coffee Culture	18 London Street	03 328 7080	
Diamond Harbour Ferry	B Jetty, Lyttelton Wharf	03 328 9078	
Dockside Apartments	22 Sumner Road	03 325 5707	Grant / Kathy
Fishermans Wharf	39 Norwich Quay	03 328 7530	
Freemans Restaurant	47 London Street	03 328 7517	
Frog Web Works	14 Winchester Street	Private No.	Graeme 027 473 5018
Four Seas Restaurant	23 Dublin Street	03 328 8740	
Ground Gourmet Foods, Catering	Lyttelton Farmers Market	Private No.	Jenny 022 476 8633
Himalaya Design	20 London Street	03 328 7600	Wed-Sun 10.00am - 4.00pm
It's Indi	2 London Street	03 328 8185	
Jack Tar Sailing	West Side, No.7 Wharf	03 389 9259	Mike Rossouw
London Fish and Chips	34 London Street	03 328 8819	
London Street Books	48 London Street	03 328 8088	Thurs-Sun
London Street Dairy	34 London Street	03 328 7358	Open 7 Days
Leslies Bookshop	18 Oxford Street	03 328 8292	
Lyttel Beauty	32 Voelas Road	03 328 7093	www.lyttelbeauty.co.nz
Lyttel Piko	12 London Street	03 328 8544	
Lyttelton Bakery	34 Norwich Quay	03 328 9004	
Lyttelton Builders Limited	56 London Street	03 328 9305	Peter 021 862 537
Lyttelton Harbour Information Centre	65 London Street	03 328 9093	
Lyttelton Library	35 London Street	03 941 7923	
Lyttelton Health Centre	18 Oxford Street	03 328 7309	
Lyttelton Physiotherapy	18 Oxford Street	03 328 8111	
Lyttelton Recreation Centre	25 Winchester Street	03 941 5656	
Lyttelton Sea Foods	26 Norwich Quay	03 328 7628	
Lyttelton Service Station	1 Canterbury Street	03 328 8749	
Lyttelton Shuttle	Airport, City, Anywhere	0800 08 07 06	
Lyttelton 'Top' Club	23 Dublin Street	03 328 8740	
Mac Todd Solicitors	24 Dublin Street	03 328 9992	
Min Sarginson Real Estate	53 London Street	03 328 7273	
Mondo Vino	42 Norwich Quay	03 328 7744	
PedalOn Bicycle Service	2 Exeter Street	03 328 9246	021 055 6865
Porthole Bar	40 London Street	Private No.	Mike 021 328 977 [Tue-Sun]
Portico	48 London Street	03 328 8088	Tue-Sun 10am - 4pm
Professionals Real Estate	36 London Street	03 328 7707	Lynnette 021 224 6637
Project Lyttelton Office	54a Oxford Street	03 328 9243	Sue-Ellen

.../ Continued

“ business directory ”

April 2012

Lyttelton [continued]

Ray White Real Estate	47 London Street	03 331 6757	Marie / Daisy
Roots	Private Address	Private No.	Christy/Guilio 021 120 8083
SAMO Coffee	3 Canterbury Street	Private No.	Open 7 Days
Sno Clothes	23 Randolph Terrace	03 328 8584	Heather
Storm Hairdressing	34 London Street	03 328 8859	Sally
The Rookery	Ross Terrace	03 328 8038	Angus / Rene
Volcano Radio	Private Address	03 328 8566	

Governors Bay

Governors Bay Hotel	52 Main Road	03 329 9433
She Chocolat	79 Main Road	03 329 9825
Living Springs	Bamfords Road	03 329 9788

For news, events, and what is open or closed in Governors Bay, visit: www.governorsbay.net.nz

Diamond Harbour

Bronwen Jones— Writing and PR Services	Rawhiti Street	03 329 4303	www.bronwen-jones.com
Diamond Harbour Ferry	Waipapa Avenue	03 328 9078	
Orton Bradley Park	Marine Drive	03 329 4730	
Snowdrop Cottage Children's Store	Waipapa Avenue	03 329 4464	Open 7 Days 9.00am - 5.00pm
Diamond Harbour Medical Centre	2a Waipapa Avenue	03 329 4402	

For news, events, and what is open or closed in Diamond Harbour, visit: www.diamondharbour.info

“ meeting venues ”

April 2012

Diamond Harbour Community Hall	Hall	Waipapa Avenue	Diamond Harbour	03 329 4119
Diamond Harbour Community Hall	Stage Room	Waipapa Avenue	Diamond Harbour	03 329 4119
Orton Bradley Park - Boardroom		Marine Drive	Diamond Harbour	03 329 4730
Governors Bay Hotel		52 Main Road	Governors Bay	03 329 9433
Living Springs		Bamfords Road	Governors Bay	03 329 9788
Black Cat - Canterbury Cat	Catamaran	B Jetty, Lyttelton Wharf	Lyttelton	03 384 0621
Lyttelton Club “Top Club”	Meeting Room	23 Dublin street	Lyttelton	03 328 8740
Lyttelton Harbour Info Centre	Boardroom	65 London Street	Lyttelton	03 328 9093
Naval Point Yacht Club	Wardroom	Naval Point	Lyttelton	03 328 7029
Project Lyttelton	Meeting Room	54a Oxford Street	Lyttelton	03 328 9243

“accommodation”

April 2012

Lyttelton

- **Dockside Apartments.** Three private apartments enjoying harbour views, now open and available for casual holiday or short term occupancy. Scenic and so close to London Street, this is an ideal option for friends or family to stay. Options range from studio; one bedroom or two bedroom apartment. Tariff from \$90 - \$120 per night. Phone Grant or Kathy on 03 325 5707 or view more details online www.dockside.co.nz.
- **Randolph Apartment.** Private two bedroom modern apartment with superb views across Lyttelton and inner harbour is now available for holiday or short term accommodation. Apartment features private spa, bar-b-que area, off street parking for one vehicle, and all the mod-cons including WIFI and MySky television. Tariff from \$120.00 per day, with minimum three night stay. Longer term rates available. Phone Heather 03 328 8585 or 03 328 8584.
- **The Rookery.** Built in 1866 The Rookery Bed and Breakfast is one of the oldest surviving local cottages, with wonderful panoramic views of the historic port town of Lyttelton, the main harbour, Quail Island, surrounding hills and volcanic cliffs. Three beautifully renovated rooms are available; one with ensuite facilities. Tariff from \$115 - \$160 per night. Phone Angus or Rene Macpherson on 03 328 8038 or view more details on line www.therookery.co.nz.

Diamond Harbour

- **Diamond Harbour Lodge** is the perfect place to relax, enjoy and unwind. Offering harbour sea views, spacious rooms, TV/DVD, CD player, large selection of books, board games, free wireless internet, fridge, toaster, jug, microwave, sink, selection of tea, complimentary cookies, electric blankets, underfloor heating in bathroom, heated towel rail, linden leaves toiletries, towelling bath robes. Robyn and Pete Hedges 3 329 4005 or visit www.diamondharbourlodge.co.nz
- **Mt Evans Bed and Breakfast** offers accommodation in two self contained cottages. Quiet rural setting only 500m from the beach. For further information contact Pauline 03 329 4414 or visit www.mtevansbnb.co.nz
- **The Old Exchange Bed and Breakfast** right in the heart of the Village at 2 Waipapa Avenue. Two queen sized bedrooms with ensuite bathrooms, own private entrance, sea views and within walking distance of the Ferry. Contact Jill 03 329 4275 or 027 482 6014.
- **Orton Bradley Park** offer self contained camper van sites for overnight stays. Services include 15 powered sites; treated drinking water; toilet blocks and dump site, with the golf club and tennis court next door. Fees start from \$15.00 per night for two persons, with additional adults at \$6.00 per night. Contact 03 329 4730.

Governors Bay

- **Governors Bay Bed and Breakfast** offers a place to relax and rejuvenate on nine acres to bush side paradise beside the harbour. Enjoy breakfast on the deck while listening to the native bird song. Furnished room with ensuite bathroom and separate sitting area also available for short term rent for those seeking emergency accommodation. For more details contact Eva on 03 329 9727, or view on line www.gbbbedandbreakfast.co.nz.
- **Governors Bay Hotel** has been restored to it's former glory and offers six guest rooms located on the first floor level. All rooms recently renovated with 32 inch flat screen televisions, queen size beds, free wifi broadband, heaters, electric blankets and vanities. Four of the rooms have direct verandah access through French doors opening out onto a balcony with wonderful views over the Lyttelton harbour. Contact the Governors Bay Hotel on 03 329 9433 or view more details on line: www.governorsbayhotel.co.nz.
- **Living Springs** offer an array of accommodation options from fully service private rooms, studios, twin rooms, shared bunkrooms to outdoor camping. Also available are some powered caravan sites. All rooms are clean, comfortable and well maintained for your relaxation. Contact Living Springs on 03 329 9788 or view more details on line: www.livingsprings.co.nz.

“real estate review”

April 2012

Building in Lyttelton?

Part One: Consult the Historic Places Trust

Before the Canterbury Association started surveying the land around Lyttelton in 1849, the Lyttelton Harbour was already home to local Maori and pre 'first four ships' settlers. People have permanently occupied this area for centuries past, and gaining knowledge of these early settlements, can sometimes only be achieved through the process of ground excavations. In 1993 a piece of legislation called the Historic Places Act was introduced. The purpose of the Act is to promote the identification, protection, preservation, and conservation of the historical and cultural heritage of New Zealand. Under this Act there are a number of sections to take note of if you are rebuilding in Lyttelton, and in particular:

Section 2: An archaeological site is defined as a place associated with pre-1900 human activity; where there may be evidence relating to the history of New Zealand; and which is able to be investigated by archaeological methods to provide evidence relating to the history of New Zealand. Therefore, if you are interested in a property built before 1900, then it will be deemed an archaeological site under the Act.

Section 10: If an archaeological site is to be modified, damaged or destroyed in the course of any activity [including natural disaster] then an authority is required from the New Zealand Historic Places Trust. This is regardless of whether a site is recorded or not; whether or not the pre-1900 building or structure is listed in the Council's district plan; or registered with the New Zealand Historic Places Trust.

Section 99: Anyone who knowing, or having reasonable cause to suspect that a site is an archaeological site, damages or modifies a site without the prior authority of the Historic Places Trust, is liable for a fine not exceeding \$40,000. To destroy an archaeological site one may be liable for a fine not exceeding \$100,000.

It is an offence to damage or destroy a site for any purpose without prior consent from the Historic Places Trust. Consent is required before demolition can begin on any pre-1900 building or structure, including the removal of foundations, or for earthworks located near pre-1900 buildings. Further the Act states that consent must be sought before removing any foundations, or undertaking earthworks, of any building built after 1900 where there was, or was likely to have been, occupation prior to 1900. And beware, even if your property was built after 1900, in the unlikely event that any suspected archaeological material is found during any earthworks on the site, all work must stop and the New Zealand Historic Places Trust contacted to determine appropriate course of action.

To clarify your position contact Southern Regional Office - Historic Places Trust

Phone: 03 363 1880
Email: information@historic.org.nz
Web: www.historic.org.nz

And you can always talk to me:

Lynnette Baird
Licensed Real Estate Agent REAA 2008

Your local real estate Professional



Lynnette Baird

P: 03 328 7707 M: 021 224 6637

E: lynnette@realhomes.co.nz

W: www.realthomes.co.nz



Professionals

Kennard Real Estate Limited MREINZ
www.kre.co.nz