

“lyttelton review”

lyttelton harbour community update

www.lytteltonharbour.info

13 February 2012
E29

Yacht Club Anchors Lyttelton

Naval Point Yacht Club Welcomes Community Involvement

The path to Naval Point Club is more “well worn” since the earth started shaking. Being one of the few places that a crowd can gather, the Lyttelton community has discovered this is more than a yacht club, and it is now home to many community activities other than sailing. People wonder down for Jikyo-jutsu, African drumming, Pilates, the Museo's Club and of course great music evenings organised by Al Park. Most of you will also know that Ground have relocated here. Ground open their cafe from Tuesday to Saturday, run a catering business, and they cater for the Club - which makes the Naval Point Yacht Club the ideal place for meetings, seminars or functions.

The sailing part of the club is home to 900 members who reside both locally and in greater Christchurch. With such a large membership there is a large team of people that run the club. Ken Camp is the Club Manager. Ken's been the manager for seven years. Ross May is also in today and he is the membership secretary, and then Tony Taylor pops in and out and he looks after the club boats and the slipway. Ken says “we are probably one of the larger employers in Lyttelton with eighteen people employed in various roles at the club”.

The club is an amalgam of the former keel boats club and the dinghy sail boats. Membership keeps growing because of so many displaced water activities in the Christchurch area. Ken talks about the waka's that train here and all the extra school children that come sailing. A large group of secondary students are at the club on Wednesday. Andrea Bowater's leadership has seen junior numbers leap from six to fifty.

It seems the vision of the club has always been to be more involved with the local community. Ross said “basically we are not that good at marketing ourselves. The earthquakes have just meant that we are able to help groups who needed a place to operate from. People came to us looking for space”.

The earthquakes seem to have crystallised a lot of things for the club. They have been able to achieve their vision of being more than a sailing club, and the Lyttelton Master Plan process has given them the opportunity to help create a plan for the entire Naval Point area, plus the inner harbour. They dream of a home for yachts in the inner harbour and a place for dinghy's and smaller boats at Naval Point. It's heart warming to see this organisation going from strength to strength and making the most of the opportunities that have come their way.

Article: Lyttelton Harbour Information Centre

Image: Lyttelton Harbour Information Centre



Left to Right: Ken Camp, Tony Taylor, Ross May

 **lytteltonharbour**
informationcentre

Providing Quality Local and Visitor Information

65 London Street, Lyttelton 8082
P: 03 328 9093

E: infocentre@lyttelton.net.nz
W: www.lytteltonharbour.info

Lyttelton Review is a community newsletter initiative designed to keep harbour residents informed with what is going on. Learn about community groups; businesses; events; and everything in between. We are not affiliated with any particular group or organisation - just a group of vibrant like minded unpaid volunteers striving to give an independent, and uncensored voice. Here at the Lyttelton Review, we love news, ideas and information. If you have an event, topic, cause, or other, that you would like to share with the harbour community, then we would love to hear from you. Be heard, be seen, be informed - read it or offer it here:

infocentre@lyttelton.net.nz

Lynnette Baird
021 224 6637

Wendy Everingham
021 047 6144

65 London Street

Thursday Deadline
Published Monday

Lyttelton Review is
sponsored by:

Lynnette Baird
Licensed Real Estate Agent
021 224 6637

www.realhomes.co.nz
www.kre.co.nz

Business Recovery Seminar

Lyttelton Harbour Business Association

A business recovery seminar is to be held on Wednesday 15th February. The seminar is a joint initiative between the Lyttelton Harbour Business Association and Christchurch City Council.

The purpose of the seminar is to provide sufficient and relevant information to Lyttelton business owners and commercial property owners, to both enable them to progress repairs or start rebuilding plans, and to get good outcomes for the community.

It will comprise:

A programme of set time, verbal presentations, from relevant organisations on relevant topics, as requested by the Lyttelton Harbour Business Association.

Topics include business assistance, insurance, building demolition, development economics, collaborative rebuilding, heritage and green buildings, planning and building compliance, infrastructure repair or rebuild, and certain Draft Lyttelton Master Plan actions which have business implications.

Speakers include relevant representatives from Recover Canterbury, the Insurance Council, CERA and the Christchurch City Council. Attendees will be free to attend whichever presentations are of relevance or interest to them.

A simultaneous display of graphic and/or written information will be manned by the above presenters when they are not speaking and are available to talk to attendees on a one to one basis, including detailed handouts of the information they presented verbally, or for those who want it, or could not attend their presentation.

A detailed programme is expected to be available, prior to 15 February 2012, once it has been finalised.

What: Lyttelton Business Seminar
Where: Lyttelton Club
23 Dublin Street, Lyttelton
When: Wednesday 15th February 2012
10.00am to 2.00pm

Article: Lyttelton Harbour Business Association
Image: Lyttelton Harbour Information Centre



Campbell Live in Lyttelton

Lyttelton Petanque Corner - Monday February 20

Campbell Live show will be broadcasting live on Monday February 20 between 7.00pm and 7.30pm from the Lyttelton Petanque Club corner, covering the efforts to re-build around Lyttelton and to celebrate one year on.

The film crew would like to create a bit of an event as a backdrop for the live broadcast and want to encourage everyone to go down on the night and create a celebratory atmosphere.

Music is being organised; the Fire Brigade will be having a sausage sizzle; expect to see the Loons girls up on stilts; and Community House might be organising some residents to come down for a cuppa.

What: Campbell Live in Lyttelton
When: Monday 20th February
7.00pm to 7.30pm
Where: Lyttelton Petanque Club
Corner London Street and Canterbury Street

Article: Peter Evans

Cruise Ships in Harbour

A Welcomed Visit Last Weekend

What a welcome sight to see not one, but three cruise ships in Lyttelton Port over the last weekend. Quite a few people commented how that made the place feel more "normal again".

A regular cruise ship season would have seen around 80 ships visit, but this season Lyttelton has had a grand total of four!

The Lyttelton Harbour Information Centre understands that the Lyttelton Port Company remain committed to supporting this industry, and are working hard to repair the damaged wharfs to accommodate cruise ships again for the 2012-2013 season. In addition, Christchurch Canterbury Tourism have planned a trip to the United States of America in March to encourage the return of cruise ships to Lyttelton for the 2012-13 season. Lyttelton certainly needs the ships back.

Whilst some businesses have little impact from the cruise ships visitors, there are many others who do. Spare a thought for the shipping providore businesses, all the tourism operators who work out of the Information Centre, and the huge number of port side businesses who benefit from the trade.

Article: Lyttelton Harbour Information Centre

Image: Flickr Photos - John Abel, Lyttelton
www.flickr.com/photos/nz_jsa/5307495942
Photo may not be of ship in port last weekend



“ community ”

Check out these local
informative web sites:

Lyttelton Harbour
Information Centre
www.lytteltonharbour.info

Diamond Harbour
Community Information
www.diamondharbour.info

Governors Bay
Community Information
www.governorsbay.net.nz

Lyttelton Forum
www.lytteltonforum.org.nz

Lyttelton Harbour
Business Association
www.lytteltonharbour.co.nz

Naval Point Yacht Club
www.navalpoint.co.nz

Project Lyttelton
www.lyttelton.net.nz

It is amazing how much
is happening in each of
these communities as
volunteers produce
many interesting stories
about living in the
Lyttelton Harbour.

“ agm reports ”

Community Groups

The Lyttelton Review has been designed to help keep Harbour residents informed. It is a tool to be used for sharing information, and is widely circulated across residents, business and media contacts.

A great way to find out what has happened during the year from our community organisations is to read their Chairpersons AGM summaries.

If you would like to share your AGM reports with the wider community we'd love to hear from you and we'll publish them progressively over the next few months.

Here at the Lyttelton Review, we welcome your contributions:

Email:
infocentre@lyttelton.net

Post:
PO Box 74
Lyttelton 8841

Visit:
65 London Street
Lyttelton

A Taste of Herbs

Summer Garden Workshop

Garden inspiration and information with the Eco Gardener, Christine Dann.

Hands-on learning about growing and using culinary and medicinal herbs, plus herbal tea-tasting and herbal baking for afternoon tea, and herbs to take home. All for \$30. More information and registration at <http://ecogardenernz.blogspot.com> or call Christine on 329 4588.

Numbers limited to 12, so please register by Sunday February 19.

What: Summer Garden Workshop : A Taste of Herbs
Where: Te Kaawa Valley Gardens
Port Levy
When: Sunday February 26
2.00pm to 5.00pm

Exotic Escape With Ground

Cooking Classes at Naval Point Yacht Club

Vietnamese Street Food	Wednesday 28 th March
Intrigue and History of Persian Cooking	Wednesday 16 th May
Catalan cooking	Wednesday 13 th June

Ground have released their style of cooking classes for 2012, focussing on a theme or region of cuisine for the night. You will get to cook three or four courses in either a hands-on or passive role, whichever you feel the most comfortable with, eating each course with matching wines.

During the course of the evening you will learn different techniques and recipes to take home in the process.

\$70.00 per head includes full meal, recipes and wine to match. A word of warning, come to the class hungry!!

To book please email info@ground.co.nz indicating which class you would like to attend and your contact phone number.

Numbers are limited and places are secured by full payment only.



Phone:
022 4768633
022 GROUND3

Email:
info@ground.co.nz

Web:
www.ground.co.nz

Image:
www.flickr.com/photos/loupiote/87751453

Plunket Returns

Lyttelton Main School Hall

Plunket have found another new home at the Lyttelton Main School Hall, every Monday and Wednesday from 10.00am to 12noon. All families are welcome, and each Plunket play session costs 50cents. For more information call Lisa 328 8918.

Pirates of Corsair Bay

A Rambunctious Day Planned : March 10th

Adult pirates and deck hands still needed to help create this absurdly wonderful event. What the organisers specifically need are:

- People to perform as pirates – on or off sea. Small amount of practice required.
- People to help a giant phoenix puppet to rise – short event requiring minimum of practice.
- Volunteers to help with the running of the day and still able to have fun – first aid, traffic management, rubbish, etc.

Here's your chance to re-act your childhood and have some fun. If you can help Juliet and her band of helpers deliver a hilarious community event; then "hoist the sails" and get on the phone to Juliet as soon as you can on 328 8558, or email neillj@snap.net.nz - as soon as.

Pirates Pre-Event Practical Workshops

Ages Eight to Eighty - All Welcome

Sunday February 26th 1.30pm to 3.30pm
Making pirate props - telescopes, parrots, eye patches

Saturday March 3rd 1.00pm to 2.30pm
How to be a pirate - walk, talk, behave

Saturday March 3rd 3.00pm to 4.30pm
Prepare for pirate battle. Young pirates will practice with older ones

Workshops will take place at Lyttelton West School unless the hall at Lyttelton Main becomes available. Places are limited so registration is vital. Gold coin donation. Contact Lyttelton Harbour Information Centre 328 9093.

Live @ She Chocolat

Friday Night Live Entertainment

She Chocolat are featuring live music from every Friday through to Easter. Next Friday night, 24th February features the amazing Harry Harrison.

About Harry Harrison: Mixing up classic groove and funk jazz original compositions alongside their own unique takes on classic tunes by Jimi Hendrix, Beatles and The Doors. Harry Harrison has played his guitar in festivals and the concert stage throughout New Zealand and Australia, written music for jazz ensembles, film and symphony orchestra. As well as his own music, Harry has performed with many of New Zealand's finest artists including Mary Coughlan, Dave Dobbyn, Bic Runga and Midge Marsden.

What: Live Music at She Chocolat
When: Friday nights until to Easter
Dining available from 6.00pm
Live music begins 8.00pm
Price: \$25.00 - Bookings are Essential
Where: She Chocolate, 79 Main Road, Governors Bay

“ wanted ”

Lyttelton Harbour & Regional Photos

Here at the Lyttelton Harbour Information Centre we are working to upgrade our website; to further promote the Lyttelton Harbour region.

Do you have any photos of the following themes that you would be happy to share with the community:

- Buildings Lost
- Time Ball Station
- Railway Activity
- Torpedo Museum
- Ripana Island

Images can be given to us either as a printed image that we can scan and return to you; or

Supply us the image electronically via disk, USB stick or email us at: infocentre@lyttelton.net.nz

The Lyttelton Harbour Information Centre exists on donations. So unfortunately we can not pay a royalty for any images, but we can supply web links and any design credits to the photographer.

Any images you can help us with, would be fantastic.

Our special thanks to those who have sent images in.

“ snippets ”

Spread The Word

Not everyone receives these news letters, so please pass them onto anyone you think would be interested. We can also arrange printed copies for interested parties - just let us know.

What's Happening

A big thank you to everyone who emails us with what is happening in their part of Lyttelton Harbour paradise.

If you have news, or belong to a community group, own a business - get in contact with us, we would love to promote or share your story with the Lyttelton Harbour district.

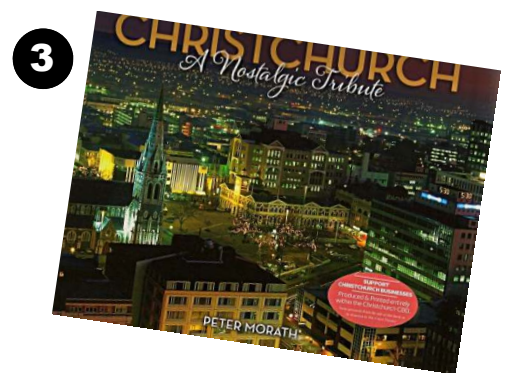
Errors, Omissions And Typos

These are part and parcel of a volunteer service. These quirky additions are offered free for your amusement. But, if we have “got it wrong” - please just let us know.

Lyttel Retail Discovery

Uniquely Lyttelton Retail

Lyttelton is not just a great place to live, work, play, eat, or drink - but also a great place to shop. Retail therapy in Lyttelton is a discovery of the unique and interesting, so take the time to walk along London Street, we know you are going love what you discover.



1. Designer Brands Beauty Book, 28 eye shadows and 20 lip glosses in one handy pack. Available Bells Pharmacy \$14.99. **2.** Sexy Me 50ml eau de parfum Paris, just in time for Valentines Day. Available Bells Pharmacy \$19.99. **3.** Christchurch A Tribute in the Making by local photographer Peter Morath. Available Leslies Bookshop \$39.95. **4.** Reproduction New Zealand Travel Posters, wide range available, framed or unframed. Available Coastal Living from \$69.00. **5.** Walnut veneer five draw Georgian revival dresser, 100 years old. Available Coastal Living \$1190. **6.** Port theme mirror, candle sticks, retro wind up mechanical toys. Available Coastal Living.

February 22 Commemorative Events

Christchurch City Council Events

Christchurch City Council has confirmed the commemorative events which will mark the first anniversary of the 22 February 2011 earthquake. All events will be held on Wednesday 22nd February, and if the services are unable to be held due to extreme weather conditions [most likely the only weather to prevent these events is high winds as it will continue in the event of rain] then the events will not be re-scheduled.

Wednesday 22nd, 8.00am

A family focused service to mark the first anniversary of the 2011 Christchurch Earthquake, organised for families who lost a loved one in the February 22nd earthquake. Members of the wider public are welcome to attend in a separate area and view the service on a large screen.

Wednesday 22nd, 12noon to 1.30pm

A Civic Memorial Service will be held at North Hagley Park. The service will have a strong community focus, including musical accompaniment for the service from Christchurch school children.

Wednesday 22nd, 2.00pm

The Christchurch Earthquake Awards commence at North Hagley Park to recognise earthquake heroes.

For those that are able to attend the Civic Memorial Service, a two minutes' silence will be observed from 12.51pm. Mayor Bob Parker says "I hope that Christchurch residents who are at work or elsewhere in the city, and are unable to attend the service, will also observe two minutes' of silence at this time to honour those lost."

In a Council press release, Mayor Bob Parker has been quoted as saying "We experienced tremendous loss in 2011 and the public commemorative events will provide us with the opportunity to collectively reflect on the events of the past year. We have consulted with the community, service agencies and Central Government and believe that the public events will provide a wonderful opportunity for us to come together as a community. "

When a City Falls

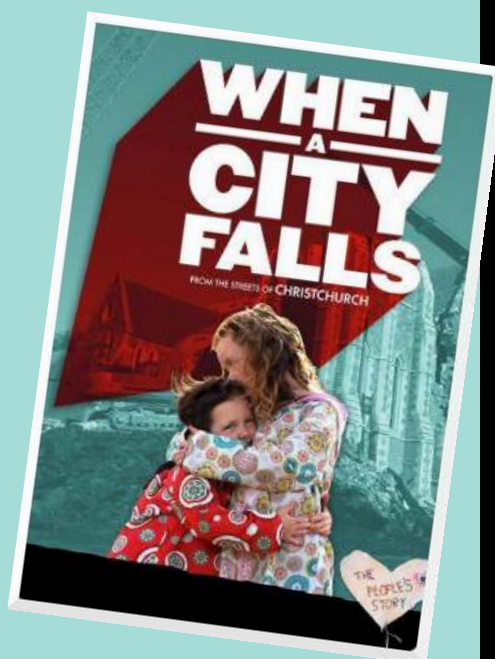
Television Three : Premier

Sometimes, a film makes itself. So it is with When A City Falls, the documentary film about the series of earthquakes which rocked Canterbury this year and last, and changed our worlds as New Zealanders forever.

Christchurch resident Gerard Smyth really didn't have to do much when they hit - he simply picked up his camera and let the documentary make itself. Basically made over a twelve month period, and beginning with blue skies and daffodils on the Canterbury plains, Smyth follows the events which unfold in the Garden city and nearby.

As Smyth's own voiceover at the start of the film intones: "This is a film I could never have planned to make". But what emerges is a grippingly, emotional piece on the human condition, and how we as human beings respond in times of tragedy and personal loss. Also, what comes out is a deeply humbling study of what makes us Kiwis and showcases the very best of human nature.

Article: Review from Darren Bevan of Television New Zealand



“ snippets ”

Looking for more Summer Reading?

A book swap has been operating from the Lyttelton Harbour Information Centre for some time. Thank you to all the lovely residents who keep dropping books in. This service is available to any locals, simply just pop in choose a book and then return it or another when you are finished.

Torpedo Boat Museum Open

Thanks to a group of Lyttelton residents the Torpedo Boat Museum will be open again over the Summer Season:
Saturday
Sunday
Tuesday
Thursday
1.00pm to 3.00pm

Lyttelton Garage Sale

This fundraising event will now be open two days per week:
Thursday
2.00pm to 4.00pm
Saturday
10.00am to 1.00pm

Anniversary Canterbury Yacht and Motor Boat Club

The 90th anniversary of the Canterbury Yacht and Motor Boat Club occurred last year. The planned celebration of this event got overtaken by earth- quakes and associated issues. To mark the occasion, there will be a function at the club on Saturday 24 March, 7.30pm

Tickets now available from the office \$20.00 members and \$30.00 non members.

1920s dress essential.

Be in quick as space is limited - and we have a 16 piece band!

Naval Point Yacht Club
03 328 7029

Temporary Accommodation Allowance

Financial Assistance When Your Insurance Allowance Runs Out

Temporary Accommodation Assistance is available for homeowners, including those in the Red Zone, whose homes are uninhabitable and their insurance cover for temporary accommodation has or is about to run out. Temporary Accommodation Assistance can help with rent, board or motel stays. This is available to all eligible homeowners, regardless of income.

525 residents are currently receiving assistance with 56 residents approved for payment at a future date. The Insurance Council of New Zealand has advised that currently 6,572 people are receiving temporary accommodation assistance from insurance companies and the projected number of total claims may be up to 9,814. It appears most insurance policies pay temporary costs for a period of 12 months. From this there is a possibility of a large increase in applications for temporary accommodation assistance to Ministry of Social Development during February through March 2012.

www.quakeaccommodation.govt.nz/apply-for-temporary-accommodation-assistance

Red Cross Grants Available

Storage Grant and Winter Assistance Grant

Storage grant up to \$500. The aim of this grant is to assist homeowners who have had to vacate their damaged property and pay for storage for their belongings at anytime since 4th September 2010, and who have exhausted other financial assistance to pay for storage.

Winter Assistance Grant up to \$400 per household paid over four months to assist with electricity bills. The aim of the grant is to assist vulnerable households who are living in significantly damaged homes, or who have had to move into damp or hard to heat homes.

For more information visit: www.redcrosseqgrants.org.nz

Bells Pharmacy - Product Promotion

KIDS + SCHOOL = CUTS + SCRAPES



The first choice for protecting kids from skin infections.

- Strongest antibacterial cream available without prescription.¹
- New Zealand's No.1 selling topical OTC antibacterial cream.²
- Fights and prevents skin infection in cuts, scrapes and grazes, body piercings, insect bites, cold sores and impetigo (school sores).
- No risk of developing resistance to Crystacide.³
- Also effective in treating acne.

FREE GIFT WITH PURCHASE!



Free Plaster, Dressing and Bandage Kit available with purchase of Crystacide. Ask your AFT representative about this offer available NOW.



¹Crystacide First Aid Cream is the most effective antibacterial cream available without prescription. ²Crystacide First Aid Cream is the most effective antibacterial cream available without prescription. ³Crystacide First Aid Cream is the most effective antibacterial cream available without prescription.

Port Hills Update

February 9, 2011

This update includes information provided by Christchurch City Council and the Canterbury Earthquake Recovery Authority representatives at street meetings held since early December. The meetings were organised to speak directly to residents of homes that had been issued notices prohibiting entry about the specific geotechnical hazards in their areas.

Land investigations

- Ground truthing by geotechnical engineers of GNS life-risk and rock fall reports are expected to be completed by the end of March 2012.
- Further reports on cliff collapse and landslip expected to be completed by GNS at the end of February.

Zoning

- Area-wide land zoning decisions are made by the Government with advice from CERA.
- Rezoning of remaining white zones remains a high priority for CERA and decisions will be made as soon as possible.

Section 124 Notices

- The Christchurch City Council is responsible for the issue of section 124 notices prohibiting entry to homes because of the danger from geotechnical hazards such as rock fall.
- Once policies are developed and ground-truthing completed, Section 124 properties will be advised of the status of their properties.
- The three main options are: no reoccupation possible; remove Section 124 and re-occupy; re-occupy if remediation or other measures are implemented.

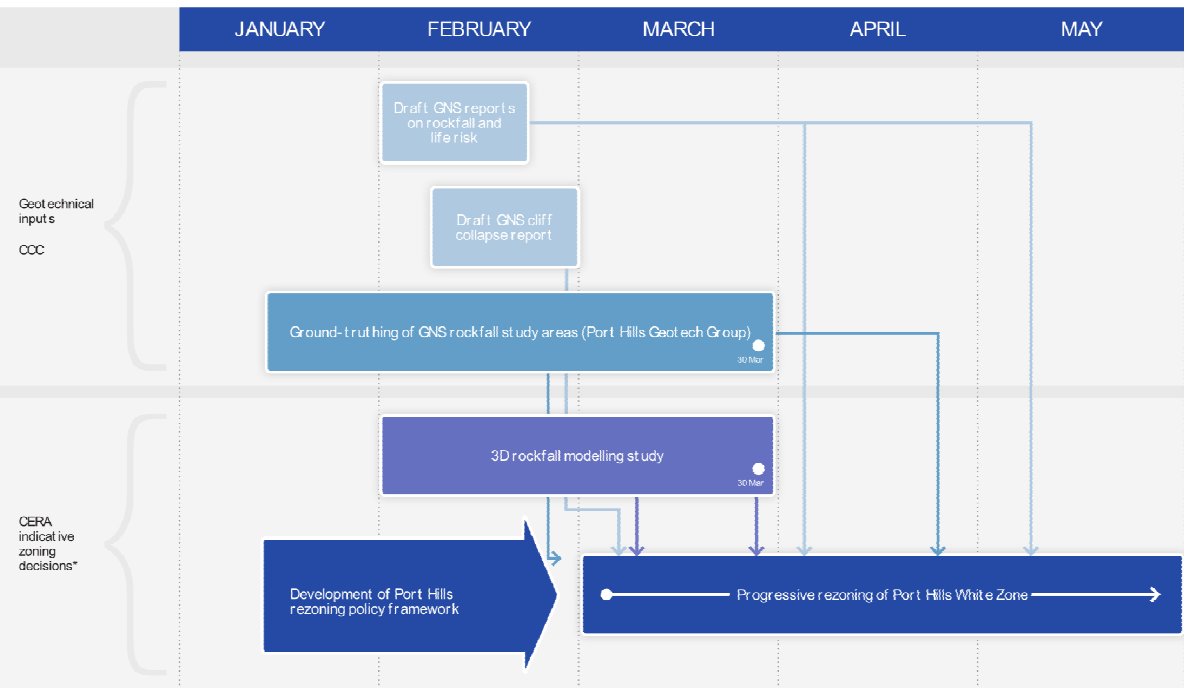
“ snippets ”

Kayaking Fun Corsair Bay

Kayaking fun and coasteering continue at Corsair Bay with the Lyttelton pool closed this summer the Christchurch City Council teamed with Adventure Specialties to offer kayaking fun and coasteering at Corsair Bay. Saturday and Sunday, 11am to 5pm until 3 March, weather permitting. Enjoy paddling in the bay using sit on top kayaks or give coasteering a go to discover the rocky shoreline with the assistance of a knowledgeable guide. Activities are most suitable for 8 years and over and cost \$2.50 per activity. Lifejackets are provided. Numbers are limited and are on a first come, first served basis. For more information, please phone Adventure Specialties on 379 9130.



Port Hills Rezoning - Indicative Timeframes



*These things are subject to the geotechnical inputs being available as expected.
CERA: 10 February 2012

Can CERA provide a definite timeline for decisions on zoning?

There are a number of complex geotechnical issues that need to be considered in the Port Hills area. CERA is unable to put an exact timeframe on when decision will be reached but is working hard to get some certainty for residents as quickly as possible.

How will we be informed of decisions about our property?

If your property has been re-zoned, you will be sent a letter by CERA. The Council will keep residents of homes that have received section 124 notices prohibiting entry up to date on the status of their home.

How many Port Hills properties have Section 124 notices?

Currently almost 524 properties have s124 notices because of rock fall, cliff collapse and landslide hazards.

When can our Section 124 notice be lifted?

The notices have generally been applied for safety reasons, specifically life-risk hazard. There is no mechanism to sign away an s124 unless advice is received from geotechs that the hazard has been removed or reduced to an accepted level. Geotechs are using the GNS reports to reassess all sites and consideration for removal of s124 will only occur once this work has been done for a site.

What is happening with retaining walls?

Retaining walls are being reviewed in conjunction with EQC and SCIRT (Stronger Christchurch Infrastructure Rebuild Team).

Rental Property Wanted

Looking for house in Lyttelton for a woman and two young children to rent or house sit. A yard would be great, too. Please phone Heidi 0274315413.

Wanted to rent, one bedroom (or similar) flat by careful mature lady. Please phone 027 777 9837.

Professional couple (doctor and consultant) wish to rent a two bedroom house in Lyttelton (fully/partially fenced for two well behaved dogs). Early 40s, tidy and conscientious with property. Phone Jackie 03 482 1517, 027 555 3740 or email

jackiefanning@lnz.co.nz

Lyttelton Club Restaurant

Open Thurs - Sunday 5pm - 9pm



\$15 Roasts



Children under 10 dine free Thursday and Sunday

1 Child per paying adult * conditions apply

All Welcome

“harbour events guide”

February 2012

February

14	Valentines Day	6.00pm	Romantic Dinner for Two	Plenty of Lyttelton areas for Romance
14	Diamond Harbour Historical	6.00pm	Charteris Bay Yacht Club	Bring food, drink etc for BBQ
14	Community Board Meeting	12.30pm	Living Springs	Lyttelton Mt Herbert Community Board
15	Weekly Shopping Trip	1.00pm	Lyttelton Community House	7 Dublin Street 03 741 1427
15	Plenty to Share	3.00pm	Cnr London and Canterbury	Bring, Exchange and Share Food
15	Business Recovery Seminar	10.00am	Lyttelton Club	Guest Speakers and Information
16	CCC Earthquake Meetings	9.30am	Council Chamber, Civic Offices	Clare Sullivan 03 941 8533
17	Live Music at She Chocolate	8.00pm	79 Main Road, Governors Bay	Dine from 6.00pm Bookings Essential
18	Lyttelton Farmers Market	10.00am	Lyttelton Main School	Fresh produce direct to you
18	Lyttelton Garage Sale	10.00am	The Portal, Oxford Street	Second Hand Bargains and More
19	Sublime Sounds at the Point	12.00pm	Diamond Harbour Rec Ground	Featuring Paul Ubana Jones
20	Campbell Live in Lyttelton	7.30pm	Cnr London and Canterbury	Join the Crowd to Celebrate Lyttelton
21	Canterbury Schools Triathlon	9.30am	Corsair Bay to Lyttelton	All day event Finishes 4.00pm
21	Jackie Bristow - Live	8.00pm	Naval Point Yacht Club	\$15 Tickets at the Door
22	Civic Memorial Service	12.00pm	North Hagley Park	Remembering Christchurch Earthquake
22	Weekly Shopping Trip	1.00pm	Lyttelton Community House	7 Dublin Street 03 741 1427
22	Plenty to Share	3.00pm	Cnr London and Canterbury	Bring, Exchange and Share Food
24	Live Music at She Chocolate	8.00pm	79 Main Road, Governors Bay	Dine from 6.00pm Bookings Essential
25	Lyttelton Farmers Market	10.00am	Lyttelton Main School	Fresh produce direct to you
25	Lyttelton Garage Sale	10.00am	The Portal, Oxford Street	Second Hand Bargains and More
26	Sublime Sounds at the Point	12.00pm	Diamond Harbour Rec Ground	Featuring Various Artists
26	Summer Garden Workshop	2.00pm	Te Kaawa Valley Gardens	\$30 Tickets Christine 329 4588
29	Weekly Shopping Trip	1.00pm	Lyttelton Community House	7 Dublin Street 03 741 1427
29	Plenty to Share	3.00pm	Cnr London and Canterbury	Bring, Exchange and Share Food

March

01	Civil Defence	6.00pm	Lyttelton Recreation Centre	Ken Maynard 03 328 9553
02	Heart Foundation Seminar	12.00pm	Village Hall, Heathcote	http://www.heartfoundation.org.nz/
02	Live Music at She Chocolate	8.00pm	79 Main Road, Governors Bay	Dine from 6.00pm Bookings Essential

Lyttelton Harbour Network

For news, events, and what is open or closed around the Harbour Basin, don't forget to visit:

Diamond Harbour Information
Governors Bay Information

www.diamondharbour.info
www.governorsbay.net.nz

“ community groups ”

February 2012

Lyttelton Harbour

Civil Defence

New members welcome. Meet first Thursday of every month, 6.00pm at a venue to be confirmed in the New Year. Next meeting Thursday March 1st, 2012. To become involved contact the Area Co-ordinator, Ken Maynard, on 03 328 9553.

Lyttelton Community Association

New members welcome. As an issues based organisation, we do not hold regular meetings. If you have a concern which you think has wide spread relevance, or if you would like to be advised of when the next meeting will be held, please email us at LCAssn@vodafone.co.nz or phone 03 328 9553.

Lyttelton Community House

Meals for the elderly continue to be prepared and delivered daily. If you know of any elderly residents who need this service, please contact Christine or Courtenay 03 741 1427.

Lyttelton Food Bank

Donations or collections can be arranged at: Lyttelton Community House, 7 Dublin Street, Lyttelton; Lyttelton Harbour Information Centre, 65 London Street, Lyttelton; or Project Lyttelton, 54a Oxford Street, Lyttelton

Lyttelton Harbour Business Association

For more details visit: www.lytteltonharbour.co.nz

Lyttelton Harbour Information Centre

Monday to Friday 11.00am to 3.00pm; Saturday 10.00am to 1.00pm; Sunday 11.00am - 2.00pm.

Lyttelton Harbour/Whakaraupo Issues Group

Initiatives for improving the environment and harbour water quality have been successful and are ongoing as part of a larger habitat recovery goal. Group meets five times a year, with informative speakers, and is community lead and supported by staff of CCC, ECAN and LPC. New members welcome. Contact Claire Findlay 328 8930 or Melanie Dixon 328 9908.

Lyttelton Time Bank

Monday to Friday, 10.00am-2.00pm. Either Bettina, Jen or Lisa will be at the Lyttelton Harbour Information Centre, Tuesday, Wednesday, Thursday and Friday 9.00am to 11.00am and Tuesday, Wednesday 4.00pm to 6.00pm. Or phone: 021 806 406

Lyttelton Youth Centre

Youth Centre/Community House, 7 Dublin Street, Lyttelton. Contact Christine 03 741 1427 for further details.

Plunket Playgroup

With the closure of the Lyttelton Recreation Centre, please contact Lisa York-Jones 03 328 8918 for details on new locations and time frames.

Project Lyttelton

The Portal, 54a Oxford Street, Lyttelton [located behind the Swimming Pool]. Office 03 328 9243.

Time Bank Garage Sale

All donations of good used, or new, household items greatly accepted. Please do not donate items that cannot be sold, as this increases our costs trying to take unwanted items to the charity barn, or worse still the rubbish depot.

Toy Library

With the closure of the Lyttelton Recreation Centre, please contact Roz Jenkins 03 328 8552 for further information.

Volcano Radio

Currently - Off Air

“ business directory ”

Lyttelton

February 2012

Acupuncture Therapy	18 Oxford Street	03 328 9053	Robin Kerr
Alexander Technique	Private Address	03 328 8968	Belinda Walker
Bank of New Zealand	56 London Street	0800 80 04 68	
Beauty by Carly	Private Address	021 294 5676	Carly Miller
Bells Pharmacy	50 London Street	03 328 8314	
Christchurch Council Service Centre	35 London Street	03 941 8999	Debbie/Patricia
Coastal Living / Picture Framers	34 London Street	03 328 7350	
Coffee Culture	18 London Street	03 328 7080	
Diamond Harbour Ferry	B Jetty, Lyttelton Wharf	03 328 9078	
Dockside Apartments	22 Sumner Road	03 325 5707	Grant / Kathy
Fishermans Wharf	39 Norwich Quay	03 328 7530	
Freemans Restaurant	47 London Street	03 328 7517	
Four Seas Restaurant	23 Dublin Street	03 328 8740	
Ground	Naval Point Yacht Club	022 476 8633	Tue-Sat 8.30am-4.30pm
Himalaya Design	20 London Street	03 328 7600	Thurs-Sun
It's Indi	2 London Street	03 328 8185	
Jack Tar Sailing	West Side, No.7 Wharf	03 389 9259	Mike Rossouw
London Fish and Chips	34 London Street	03 328 8819	
London Street Books	48 London Street	03 328 8088	Thurs-Sun
London Street Dairy	34 London Street	03 328 7358	Open 7 Days
Leslies Bookshop	18 Oxford Street	03 328 8292	
Lyttel Beauty	32 Voelas Road	03 328 7093	
Lyttel Piko	12 London Street	03 328 8544	
Lyttelton Bakery	34 Norwich Quay	03 328 9004	
Lyttelton Harbour Information Centre	65 London Street	03 328 9093	
Lyttelton Library	35 London Street	03 941 7923	
Lyttelton Health Centre	18 Oxford Street	03 328 7309	
Lyttelton Physiotherapy	18 Oxford Street	03 328 8111	
Lyttelton Recreation Centre	25 Winchester Street	03 941 5656	
Lyttelton Sea Foods	26 Norwich Quay	03 328 7628	
Lyttelton Service Station	1 Canterbury Street	03 328 8749	
Lyttelton Shuttle	Airport, City, Anywhere	0800 08 07 06	
Lyttelton 'Top' Club	23 Dublin Street	03 328 8740	
Mac Todd Solicitors	24 Dublin Street	03 328 9992	
Min Sarginson Real Estate	53 London Street	03 328 7273	
Mondo Vino	42 Norwich Quay	03 328 7744	
PedalOn Bicycle Service	2 Exeter Street	03 328 9246	021 055 6865
Porthole Bar	40 London Street	021 328 977	Tue-Sun 12noon to late
Portico	48 London Street	03 328 8088	Thurs-Sun
Professionals Real Estate	36 London Street	03 328 7707	Lynnette
Project Lyttelton Office	54a Oxford Street	03 328 9243	
Ray White Real Estate	47 London Street	03 331 6757	Marie / Daisy
Roots	Private Address	021 120 8083	Christy / Guilio
SAMO Coffee	3 Canterbury Street		Open 7 Days
Sno Clothes	23 Randolph Terrace	03 328 8584	Heather
Storm Hairdressing	34 London Street	03 328 8859	Sally
The Rookery	Ross Terrace	03 328 8038	Angus / Rene
Volcano Radio	Private Address	03 328 8566	

“ business directory ”

February 2012

Governors Bay

Governors Bay Hotel	52 Main Road	03 329 9433
She Chocolat	79 Main Road	03 329 9825
Living Springs	Bamfords Road	03 329 9788

For news, events, and what is open or closed in Governors Bay, visit: www.governorsbay.net.nz

Diamond Harbour

Diamond Harbour Ferry	Waipapa Avenue	03 328 9078	
Orton Bradley Park	Marine Drive	03 329 4730	
Snowdrop Cottage Children's Store	Waipapa Avenue	03 329 4464	Open 7 Days 9.00am - 5.00pm
Diamond Harbour Medical Centre	2a Waipapa Avenue	03 329 4402	

For news, events, and what is open or closed in Diamond Harbour, visit: www.diamondharbour.info

“ meeting venues ”

February 2012

Lyttelton

Black Cat - Canterbury Cat	Catamaran	Open	B Jetty, Lyttelton Wharf	03 384 0621
Lyttelton Club “Top Club”	Meeting Room	Open	23 Dublin street	03 328 8740
Lyttelton Harbour Information Centre	Boardroom	Open	65 London Street	03 328 9093
Naval Point Yacht Club	Wardroom	Open	Naval Point	03 328 7029
Project Lyttelton	Meeting Room	Open	54a Oxford Street	03 328 9243

Governors Bay

Governors Bay Hotel	Open	52 Main Road	03 329 9433
Living Springs	Open	Bamfords Road	03 329 9788

Diamond Harbour

Diamond Harbour Community Hall	Hall	Open	Waipapa Avenue	03 329 4119
Diamond Harbour Community Hall	Stage Room	Open	Waipapa Avenue	03 329 4119
Orton Bradley Park - Boardroom		Open	Marine Drive	03 329 4730

“accommodation”

February 2012

Lyttelton

- **Dockside Apartments.** Three private apartments enjoying harbour views, now open and available for casual holiday or short term occupancy. Scenic and so close to London Street, this is an ideal option for friends or family to stay. Options range from studio; one bedroom or two bedroom apartment. Tariff from \$90 - \$120 per night. Phone Grant or Kathy on 03 325 5707 or view more details online www.dockside.co.nz.
- **Flat Mate** or boarders wanted for short term family accommodation. Two furnished bedrooms available in large warm modern family home with parking and great views. Short walk to bus, London Street, and schools. Includes separate lounge and bathroom. \$150 negotiable per room, per week, plus expenses. Can include wireless and separate sky box. Meals and laundry could be provided if required, for extra. Phone Jan 328 8893 or 021 554 001.
- **Randolph Apartment.** Private two bedroom modern apartment with superb views across Lyttelton and inner harbour is now available for holiday or short term accommodation. Apartment features private spa, bar-b-que area, off street parking for one vehicle, and all the mod-cons including WIFI and MySky television. Tariff from \$120.00 per day, with minimum three night stay. Longer term rates available. Phone Heather 03 328 8585 or 03 328 8584.
- **The Rookery.** Built in 1866 The Rookery Bed and Breakfast is one of the oldest surviving local cottages, with wonderful panoramic views of the historic port town of Lyttelton, the main harbour, Quail Island, surrounding hills and volcanic cliffs. Three beautifully renovated rooms are available; one with ensuite facilities. Tariff from \$115 - \$160 per night. Phone Angus or Rene Macpherson on 03 328 8038 or view more details on line www.therookery.co.nz.

Diamond Harbour

- **Mt Evans Bed and Breakfast** offers accommodation in two self contained cottages. Quiet rural setting only 500m from the beach. For further information contact Pauline 03 329 4414 or visit www.mtevansbnb.co.nz
- **Orton Bradley Park** offer self contained camper van sites for overnight stays. Services include 15 powered sites; treated drinking water; toilet blocks and dump site, with the golf club and tennis court next door. Fees start from \$15.00 per night for two persons, with additional adults at \$6.00 per night. Contact 03 329 4730.

Governors Bay

- **Governors Bay Bed and Breakfast** offers a place to relax and rejuvenate on nine acres to bush side paradise beside the harbour. Enjoy breakfast on the deck while listening to the native bird song. Furnished room with ensuite bathroom and separate sitting area also available for short term rent for those seeking emergency accommodation. For more details contact Eva on 03 329 9727, or view on line www.gbbedandbreakfast.co.nz.
- **Governors Bay Hotel** has been restored to it's former glory and offers six guest rooms located on the first floor level. All rooms recently renovated with 32 inch flat screen televisions, queen size beds, free wifi broadband, heaters, electric blankets and vanities. Four of the rooms have direct verandah access through French doors opening out onto a balcony with wonderful views over the Lyttelton harbour. Contact the Governors Bay Hotel on 03 329 9433 or view more details on line: www.governorsbayhotel.co.nz.
- **Living Springs** offer an array of accommodation options from fully service private rooms, studios, twin rooms, shared bunkrooms to outdoor camping. Also available are some powered caravan sites. All rooms are clean, comfortable and well maintained for your relaxation. Contact Living Springs on 03 329 9788 or view more details on line: www.livingsprings.co.nz.