

LYTTELTON REVIEW

September 2021 • Issue: 284

Purau • Diamond Harbour • Church Bay • Charteris Bay • Governors Bay • Rāpaki • Cass Bay • Corsair Bay • Lyttelton
Purau • Te Waipapa • Kai-o-ruru • Te Wharau • Ōhinetahi • Te Rāpaki-o-Te Rakiwhakaputa • Motu-kauati-rahi • Motu-kauati-iti • Ōhinehou



In This Edition: Banks Peninsula Walking Festival, HMNZS
Steadfast Tracks Proposal, Lyttelton Presents Mike King

Next Issue print date: Issue 285, 12th October 2021

Content Deadline: 5pm 8th October 2021.

Cover Pic: Different view for this edition.

A reader sent us a request for māori place names on the cover. After a bit of work, checking and approving we now have them. Thank you to the people that helped us.

The Review

Is a Lyttelton Harbour Information Centre initiative designed to keep our community informed with what is going on around the harbour. It's also an opportunity to showcase the people and places that other wise would go under the radar. Our community connections ensure we know what's going on in the wider community and can share the news with you all. A big thank you goes out to all the contributors and our funders Rata Foundation and Christchurch City Council Strengthening Communities who enable the hard copies to be printed each edition. Similarly to Wendy Everingham for writing and editing and Jenny-Lee Love for design and production. If you have any local events, news or stories you would like included we'd love to hear from you.

Wendy Everingham

Mobile: 021 047 6144

Email: review@lytteltoninfocentre.nz

Content Deadline: 5pm Friday

Similarly if you would like to join our directory or have any advertising questions please contact Lyttelton Information Centre Manger
Office: 328 9093
Email: office@lytteltoninfocentre.nz

Subscribe to the Review:

To subscribe please send an email with "subscribe me" in the header.

In 2021 the Lyttelton Harbour Review is produced fortnightly. Any important information between times will be emailed as a Lyttel Broadcast if necessary.

Hard copies are available at:

The Lyttelton Arms
Leslies Bookshop
Lyttelton Healthcentre
Lyttelton Community House
Lyttelton Harbour Information Centre
Lyttelton Library,
Lyttelton Top Club

Back copies are available on our website
www.lytteltoninfocentre.nz



A Note from the Info Centre Manager

Kia ora to all our readers,

How lovely it is to be enjoying the splendid spring weather we have been having of late. The daffodils are nearing the end and the blossoms have been in great form this year. Every time I pass a garden with a blossom tree, I feel so grateful to the person who planted it. Not only do they get joy from the once-a-year gorgeous floral display, but so do we. In typical spring fashion, the weather is up and down with some very cool nights forecasted ahead. Still not quite warm enough for some Lyttelton homes to not have their chimneys smoking! With school holidays just around the corner, I invite you all to come down to the Information Centre and see what you may be able to get up to locally. Our volunteers are always happy to assist with any request you may have. And let's keep our fingers crossed for stable weather.

Wishing you all good health, Rushani



**Have you seen the
Information Centre
website?**

<https://lytteltoninfocentre.nz>

Volunteering at the Information Centre

People volunteer for many different reasons. For some, it provides the opportunity to give back to their community or make a difference to those around them. For others, it can help build on existing skills or develop new ones. Lyttelton is very well known for its sense of community and volunteering brings with it a clear sense of teamwork. I am a firm believer that volunteering is also about relationship building. In my short time at the Information Centre, I have seen the positive and helpful interactions between visitors, locals and our volunteers. I witness first-hand how important the social contact aspect of connecting with, helping and working with others has on the well-being of people in addition to building a new network of friends, increasing social cohesion and providing purpose.

We have a wonderful team of 16 volunteers and are looking for more extra-special people to join us. You may have a few hours spare once a week, fortnight or even once a month that you'd like to fill. Perhaps you have an encyclopedic knowledge of our walking trails or a real love of the history that fills every nook and cranny of our harbour. You may be a born and bred local, with stories to share with people till the cows come home. Or you may have moved here recently, fell in love with the harbour and couldn't imagine calling anywhere else home. No matter what your knowledge of the place we all call home, every volunteer brings a very special flavour and uniqueness to our Information Centre and this is what I believe

makes volunteering with us so special. We have monthly training sessions, which are often held at local businesses who are members of our Information Centre, so we can learn more about what they offer and proactively recommend them to our visitors. Our team is strong, cohesive and supportive to each other and our working environment is positive, respectful and kind.

If you would like to know more, pop on down to our Information Centre and have a chat with our friendly volunteers. We are also up for a chinwag and happy to answer any questions you may have. You're also welcome to contact me, Rushani, on my email address office@lytteltoninfocentre.nz and I'll be very happy to answer any questions you may have.

We look forward to welcoming you onboard.



Summit Road Society Guiding Walks in this year's Banks Peninsula Walking Festival

The Summit Road Society continues to be a great supporter of the Banks Peninsula Walking Festival, providing two guided walks in this year's Festival.

Join Marie Gray on a 'Kids Adventure at Sugarloaf' on Sunday 28th November. Journey through native bush, up rocky spurs, over tussock grasslands, and enjoy panoramic views in all directions. There will be activities to enjoy along the way and time for an ice-cream stop at the 'Sign of the Kiwi' for well-deserved little trampers! The area is part of Te Kāhahu Kahukura, a landscape scale restoration project that aims to create a 1000ha biodiversity hub on the southern Port Hills. Marie will share the vision of working in collaboration with landowners, residents, organisations and agencies to protect and connect existing bush and restoration plantings. This 2.5km walk will be a lot of fun, and suitable for most children.

Book tickets through Eventfinda - <https://www.eventfinda.co.nz/2021/26-kids-adventure-at-sugarloaf/christchurch-district>

Marie will also be joined by John Marsh as they 'Explore Avoca Valley' on Sunday 7th November. Learn about the ambitious planting programme the Summit Road Society has undertaken in this area of the Port Hills. Climb hilly terrain, cross tussock grassland and journey down the Rapaki Track to the Linda Woods Reserve. See for yourself the head of the valley with the particularly stunning native flora flourishing on the south facing rocky outcrops. Make sure you book your tickets on Eventfinda: <https://www.eventfinda.co.nz/2021/06-exploring-avoca-valley/christchurch-district>





New community organisation fund taking action for the environment

Applications are open for a new contestable fund for community organisations who want to take action for a better environment in Canterbury.

Building community engagement and action

The Waitaha Action to Impact Fund was established to enhance community engagement and action, and encourage environmental projects that are led by and involve communities across the region.

To apply, community organisations must have legal entity status and be a registered charity or not-for-profit organisation. The fund is not open to applications from individuals, businesses, educational institutions or government agencies.

Eligible organisations can apply for between \$5,000 and \$30,000 per year for projects that align with Council's Strategic Direction.

Valuing community organisations

We value the contribution of community organisations as they bring local knowledge and networks; raise community awareness and buy-in; as well as mobilising volunteers. They may be small locally focused groups of volunteers or larger non-government organisations employing staff.

The Waitaha Action to Impact fund was an initiative from our Long-Term Plan 2021–31. For the fund's first year, Council have allocated a total of \$100,000 with a plan to increase the money available in subsequent years.

Apply for the fund

If you think your community organisation has a suitable project, check out the fund guide and eligibility criteria.

Applications are open until 11 October 2021.

Article ECAN

Further Consultation

HMNZS Steadfast tracks proposal

City Council staff are inviting additional comments on the amended track layout in the HMNZS Steadfast landscape plan, before reporting the plan to the Community Board for approval.

Your additional feedback is welcome until October 10th.

Staff's rationale for additional consultation is:

"Although mountain biking and shared use tracks were not explicitly included in the original consultation material, feedback to the HMNZS Steadfast draft landscape plan included comments from more than a third of submitters that a range of track users should be provided for - including some strong advocacy for mountain biking.

In preparing the updated tracks plan, we further investigated issues such as hazard zones and gradient. This was followed by a site meeting between Council staff, the Cass Bay Reserve Management Committee and mountain bike representatives, to discuss suitable track options"

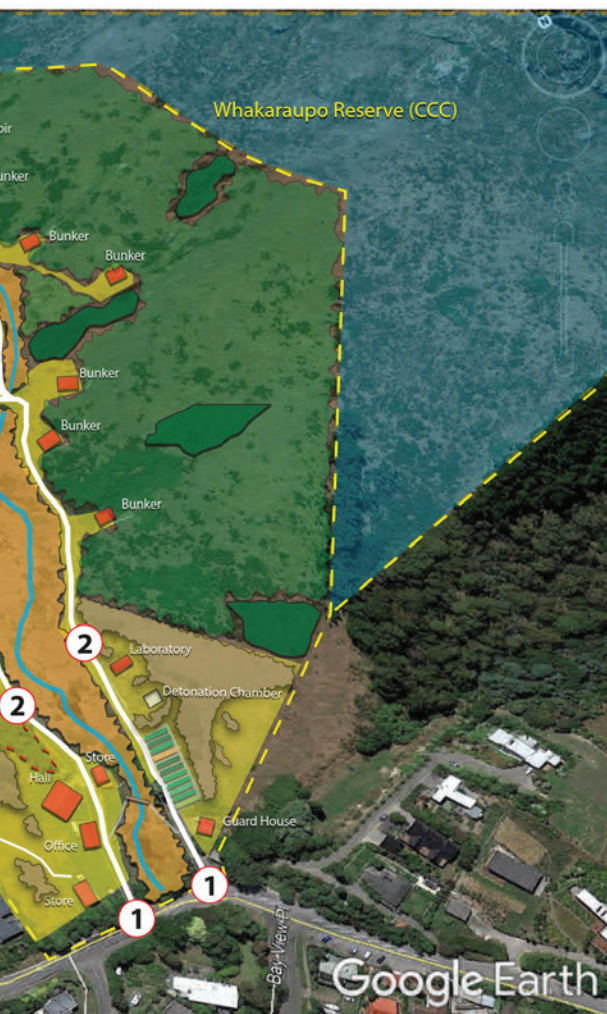


HMNZS Steadfast Draft Updated Tracks Proposal for C

Here are the new proposals:

The amended track layout includes walking tracks, shared-use tracks, and a mountain bike-only section of track. Numbering on the attached plan shows the planned staging and priority for inclusion of tracks in the park.

Tracks are not proposed in the eastern side of the park due to the risk of rock fall and unsuitable terrain, as shown in the hazard map.



ft Landscape Plan Consultation

Proposed staging of access

- 1 Access from main road frontage**
No change to consulted plan. Provide views into site frontage to increase passive surveillance by limbing-up and thinning dense vegetation. Daytime parking access during Council seasonal hours and 24 hour walking/biking access.
- 2 Shared biking and walking loop track**
No change from consulted track. Wide mown grass loop track (approximately 3 metres wide where possible) following existing vehicle/4WD terrace. Track is located outside of the rockfall risk zone which includes most of the true left (east) side of the valley above the existing track. Suitable for walking and mountain biking.
- 3 Walking track to Summit Road**
Minor change to consulted track. Walking link to Crater Rim Walkway and Whakaraupo Reserve. Council staff to investigate earthworks/benching requirements (likely extent shown in red) to construct walkway on true right (west) of the waterway gully, to avoid the rockfall zone on true left (east). This link is not suitable for mountain biking access and will be signposted as such.
- 4a Shared secondary track (a)**
Minor change to consulted track. Track across western side of valley designed for shared walking and mountain biking. Track links top of mown grass loop track (2) with start of dedicated mountain biking track (5).
- 4b Secondary walking track (b)**
Minor change from consulted track. Track suitable for walking only. Track alignment avoids activity spaces during events and now follows open grass slope along western property boundary. Track will be sign-posted as walking only.
- 5 Beginner/intermediate mountain bike track**
Addition to consulted plan. Dedicated beginner/intermediate mountain bike track following natural contours. Track to be clearly marked as a mountain biking track, and may be closed at times during and following periods of wet weather.
- 6 Poled walking route**
Minor amendment to consulted track. An informal walking-only poled route following natural contours that gains elevation along the western boundary, avoiding rockfall risk areas. Track no longer follows reserve boundary. This link is not suitable for mountain biking and will be sign-posted as such.

Note: All track alignments shown on this plan are indicative only, and may be subject to minor variations depending on (e.g.) fine-scale topography, ground conditions and further investigation.

Throughout the park, signs will indicate designated track use and, where relevant, the direction of mountain biking.

Staff also plan a community drop in session at Steadfast to discuss the proposal further. You are very welcome to discuss options further before making your submission.

The drop in is Thursday 30 September 4.30pm to 6pm, at HMNZS Steadfast, Governors Bay Road, Cass Bay.

This will only happen if we are Level 2 COVID Alert Level or lower, and corresponding restrictions of record keeping, distancing and mask wearing will apply.

Bush Farm Education – Trustees Wanted

Are you ready for your next challenge in an environment where you want to question education norms?

Bush Farm Education is an exciting startup that does just this. We take children out of the classroom during school hours and hit the curriculum outside. We give our children real-world learning experiences that complement four days in the classroom. We could be monitoring the rivers 'health through invertebrate studies; taking soil samples in various parts of the organic farm; seed-saving for next year's crops; or using handtools to fix a plumbing issue. Every day is a new day. We want our children to learn from nature, in nature, every season of the year.

Interested to know more?

Check out our website: www.bushfarm.org.nz

Our Board

Currently, we have four trustees on our Board with experience in accounting, education, sustainability and the environment. We are seeking two additional members who are Ōtautahi Christchurch based and have prior governance experience. You may be mid-career or retired.

We are seeking someone to add value to the Board in one of these key areas:

- Experience in leading a 'service' business, from Startup to growth
- Legal compliance (Health and Safety, Farming, Outdoor Education)
- Adventure therapy/ Eco-therapy/ Eco-psychology
- Fundraising, Events Planning, Communication or Public Relations



Together, with the four other trustees, your role will be to:

- Maintain our vision, mission and values, and develop our strategic goals
- Establish and evaluate relevant policies and procedures
- Ensure moral and legal compliance
- Maintain proper fiscal oversight
- Maintain effective Board performance through member conduct

Time commitment

Board roles are voluntary. Meetings are once a month (for up to two hours). There is additional paperwork, between 3 – 8 hours per month. This may be to attend a specific meeting (i.e. SWOT analysis), meet with other Board members/ Director, read and respond to Board meeting notes.

Interested?

Then please send us your CV and cover letter to office@bushfarm.org.nz and let us know why you are keen to be involved and what you would bring to the board.

Lyttelton Presents Mike King

We know the conversation around mental health is an important one. That's why we were proud to partner with the Lyttelton branch of the Maritime Union of New Zealand and the Lyttelton Rugby Club to bring Mike King to Lyttelton.

Over three nights earlier this month, Mike King gave his humorous and thought-provoking talk on his own mental health journey and how to defeat your inner critic.

Mike's presentation discusses how we all have an inner critic – something telling us we are not good enough or we are doing things wrong, and how we can stop it from taking over.

LPC CEO Roger Gray says it was a no brainer to support this work.

"As a company that has a workforce of over 600 Cantabrians, we know we have a responsibility to support the mental wellbeing of our people and the wider LPC whānau – this includes the Lyttelton and Banks Peninsula communities.

"Mike King has been a leading advocate in the field of mental health, and we are proud to welcome him to the harbour."

Mike also emphasised the importance of checking in on your friends and family, as you never know when or how you can change someone's day.

The initiative was one that was sparked by LPC Foremen Gerard Loader, who started his own mental health journey after listening to Mike King previously.

"After admitting I needed and got help for my own mental struggles, I thought what can I do to help other people at work and in the community who are struggling but unable or too proud to open up.

"I am so grateful that LPC agreed to do it not only for their employees but for the wider



Lyttelton/Christchurch community and I truly believe that what we have done has had a real positive impact on everyone who participated."

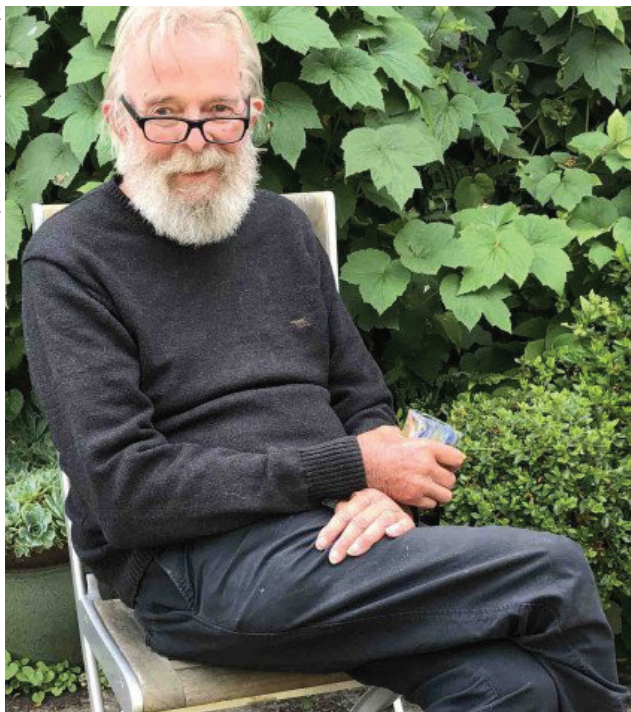
Although this was a free event, we encouraged all attending to give a koha/donation to support the Lyttelton Rugby Club's work around mental health and through the generosity of those attending, raised \$1600.

Article LPC Harbourwatch News

New book celebrates singular artist

A new book about Lyttelton artist Bill Hammond is likely to be extraordinarily popular says its editor, Christchurch Art Gallery Publications Coordinator Sarah Pepperle.

Photograph: Jane McBride.



Bill Hammond, December 2018.

"Bill was a legend, one of Aotearoa's most important artists. This new book ***Across the Evening Sky*** offers a fascinating insight into his paintings, many of which have rarely been seen."

Authored by curator Peter Vangioni, the book is the companion to 2007's award-winning book ***Jingle Jangle Morning***.

"***Jingle Jangle Morning*** was one of our most popular titles," says Mr Vangioni. "It is still regularly requested despite being out of print. ***Across the Evening Sky*** picks up where that book left off and explores what is arguably the strongest period of Bill's work, featuring large, beautiful bird paintings set in mythologised landscapes."

Work on the project began last year as a collaboration with the artist, who died in January aged 73.

It includes a recorded conversation with friend and fellow Christchurch artist Tony de Lautour – a rarity, as Mr Hammond was notorious for refusing interviews about his work.

Gallery photographer John Collie travelled around the country to capture images for the book, many of which are held in private collections. Renowned artists including Fiona Pardington, Marlon Williams and Shane Cotton also wrote short pieces on aspects of Mr Hammond's practice - and writers Rachael King and Nic Low, composer Ariana Tikao and Canterbury Museum Senior Curator of Natural History Paul Scofield are among the contributors.

In his piece, Mr Scofield pinpoints the enormous, now extinct pouākai/Haast's eagle as an inspiration for the artist.

"These very early colonisers of the birdland that was Aotearoa were undoubtedly the inspiration for Bill Hammond's giant avian creatures. That loss adds a patina of melancholy to Hammond's bird paintings," he writes.

Gallery Director Blair Jackson says it was a privilege for the gallery team to work with Mr Hammond on the book.

"He leaves behind a superb legacy of his unique vision – an incredible body of work that will, I have no doubt, continue to amaze and enthrall many generations to come."

Bill Hammond: Across the Evening Sky is being distributed around New Zealand by Nationwide Books and can also be purchased directly from the Christchurch Art Gallery Design Store.

Article CCC Newsline

Busy C's News

This edition we have two stories. One prior to lockdown, Helping the Environment and a new one embracing Te Wiki o Te Reo Māori. Thank you Busy C's for keeping your community up to date on your activities.

Helping the Environment

Busy C's is an Enviro-preschool where tamariki and kaiako are always looking out for ways to take care of the environment. We do regular hīkoi/walks to the park and the local community garden - where we love helping and learning new things. We are so lucky to have this communal space just down the road. When we are on our hīkoi the tamariki make it their mahi/ work to point out rubbish for kaiako to pick up. They have been learning about how rubbish left on the footpaths can get washed into the gutters and end up in the ocean causing harm to our precious sea life. We are all kaitiaki / guardians of our environment.

We have been thinking about ngā manu/ our birds and their winter foraging for kai - and wanted to treat them. We created pine cone bird feeders by stuffing the pinecones with fat & bird seeds. Tamariki have hung these on our fence and love observing the manu that arrive to feast on ngā kākano/seeds. We have noticed so many different manu - and are busy identifying them and imagining life as a bird. Lots of good ideas to explore!

Embracing Te Wiki o Te Reo Māori

We enjoyed embracing Te Wiki o Te Reo Māori at Busy C's, as we do every week!

Tamariki and kaiako have been challenging themselves with new kupu /words and having fun remembering... We even noticed tamariki correcting their whānau and teaching them the Māori translation of words they know.

Tamariki have been engaging in the waiata that they are familiar with and also enjoying learning new waiata.

We participated in the Māori Language Moment on September 14, 12 midday (along with many of our whānau in their places of mahi/work) in attempt for a world record for the most people using an indigenous language at once. This was pārekerekai! (fun!).



Draft Strengthening Communities Strategy

Last Friday 10 September, the refreshed draft Strengthening Communities Strategy (now called Ōtautahi Christchurch Community Strategy 2021-31) was made public for your feedback.

This Strategy is important because it will set the direction for Council for the next 10 years and determines what initiatives get prioritised/supported/funded.

The new Strategy has evolved from a high-level aspirational policy into a clear framework for creating stronger communities, with a vision, goals, objectives and actions.

The 2021 Strategy is:

- More goal-focused and outcome oriented;
- Places greater emphasis on promoting collaboration and working in partnerships to address issues of importance to communities;
- Puts more effort into research, monitoring, evaluating and reporting back to the Council, Community Boards and the wider community; and
- Builds on the core principles and values from the previous strategy.
- Organised under the four overarching 'pillars' of:
 1. People – valuing diversity and fostering inclusion
 2. Place – building community connections, identity and stewardship
 3. Participation – engagement in community life and in decision-making, including volunteering
 4. Preparedness - climate resilience and adaptation action, safety and well-being

This strategy will guide how the Council works with organisations, groups and communities across Christchurch and Banks Peninsula for the next ten years. It will influence what is resourced and prioritised.



While input was generated across the city during the review of this strategy, we are conscious there has been little input from the residents of Banks Peninsula to date.

Please have a look over this draft strategy and provide your feedback, including:

- What you support and/or disagree with.
- Is this Strategy a good fit for your community?
- Does it align with your current and anticipated community needs and aspirations?
- Are there better examples of what the intended actions may look like in your community?
- Is anything missing?

You can find all these documents, and more information, including the online feedback form on the have your say page <https://ccc.govt.nz/the-council/haveyoursay/show/353>.

The documents are also available at all Christchurch City Council libraries (including Lyttelton and Diamond Harbour where you can also submit online).

We will be at the Lyttelton Farmers Market with the engagement team on Saturday, 25 September 10am-1pm.

If you would like to talk through any questions you have or seek more information please come along, or we are happy to make another time to discuss this with you. This can be over the phone, via Zoom/Skype session or in person. Whatever works best for you.

Thank you for your ongoing interest and advocacy for all things community.

*Ngā mihi
Philipa Hay*

Community Development Advisor

The Creative Cottage Workshops

Stoddart Cottage is hosting the final rescheduled workshops in its Creative Cottage series on a day of art and craft at the historic property on 31st October. No previous experience required for any of the sessions, which are supported by supported by Creative Communities funding. Booking essential - details at: www.stoddartcottage.nz/events

Felting Flowers Workshop

Sunday 31st October, 10.30am-12pm, \$20+bf

Learn how to felt through making a felting a flower that can be made a brooch or attach to a bag or hat. Woolcraft tutor, Rowena MacGill uses wool from her Gotland sheep and alpacas in her felting and woolcraft creations. She has enjoyed sharing her creativity through workshops for decades.

The Temple of Flora - Botanical Assemblage Workshop

Sunday 31st October – 1.30-4pm, \$45+bf

A sumptuous workshop in Botanical Assemblage, led by Botanic Designer and Artist, Sarah Amazinnia, at the birthplaces of botanic artist, Margaret Stoddart. Create a plant based artwork working with fresh and dried botanical specimens gathered from around Banks Peninsula. Along the way explore the curious overlapping art historical traditions of Botanical Art, Vanitas and Memento Mori.



Cheaper Public Transport

Sign a Petition for Student Fare Reductions

Student bodies are calling Environment Canterbury



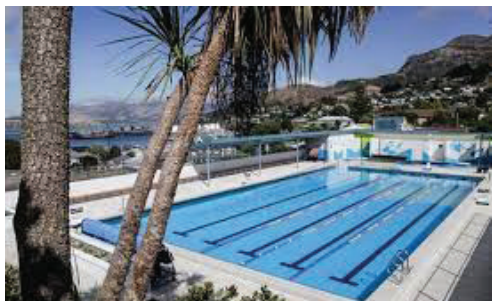
Councillors to implement a fare reduction for students. They want to get more students into more climate-friendly transport modes and argue a fare reduction would increase parking spaces for those who need it more, have a positive environmental effect, get students' cars off the road, and help them develop life-long public transport habits.

Students are a price sensitive group likely to change behaviour with a fare reduction. This is backed up in a recent survey at the University of Canterbury. The survey indicated 58% of students would use the bus more if it was discounted, as for many it's currently cheaper to drive than it is to bus. 98% of UC students support a bus discount.

In the recent Environment Canterbury long term plan submissions, Lincoln University Students Association and University of Canterbury Students Association both submitted advocating for a fare reduction for tertiary students. Subsequently councillors have voted to investigate the fare reduction, with a report coming to their meeting on the 30th of September - where it is likely to be voted on. The proposed discount would include tertiary students attending UC, Lincoln, Ara and Christchurch School of Medicine campuses, reducing the price to the current child fare.

Student bodies argue it is crucial to implement this as soon as possible to lower climate-changing emissions and congestion, give freedom to many students who can't afford to bus, bring more students into the city centre, and increase parking spaces for those who truly need it around our institutions. They need community support to get this across the line, so they are urging people to please sign their petition. To support them visit

<https://www.change.org/p/environment-canterbury-implement-a-bus-discount-for-tertiary-students-in-canterbury>



Good News Norman Kirk Pool

Following a price review by the Council's Recreation and Sports Unit, the Norman Kirk Memorial Pool in Lyttelton has had a decrease in costs for memberships.

For this coming season the cost of pool membership will decrease from \$160 to \$140, while the end of season membership will drop from \$80 to \$70.

Nigel Cox, Manager of the Recreation and Sports Unit states "We are thankful to have the support of the pool members, helping clean the pool in February and March.

Because of their efforts we are able to keep the price of the memberships down."

Little Ships Club News

Join the Club! The best fun you'll have for \$20!!

It's time to pay \$20 again! Our membership year runs from 1 October - 30 September. We don't send subs invoices out, so if you'd like to renew for the upcoming year, please send your \$20 through now.

This small financial contribution supports buying small gifts for our guest speakers and assist with the running of other events. We also sometimes get invited to special events with limited numbers and these are available to current members only. Other benefits of membership can be found on our website

If you are not sure if you have paid then drop me an email and I can let you know.

Your \$20.00 payment can be made into our bank account number 03 0802 0094950 00.

Or in cash directly at our next meeting.

Please also drop us an email to let us know your details. <https://littleshipclubcanterbury.wordpress.com/contact-us/>

Lyttelton Harbour Network Meetings

All are welcome to come along where you can network with others working and living in the area and hear about new projects and events.

Meetings for the year 2021 will be held on the following Thursdays at 12pm at the Lyttelton Community Boardroom, 25 Canterbury Street:

14 October

9 December

Snap Send Solve -

Welcome to the final week of SNAPtember! This week, we're targeting shopping trolleys. Any reports of abandoned shopping trolleys made from today until 30 September will put you in the running to win \$500.



When reporting, make sure to select the correct shopping trolley retailer.

Happy Snapping!

Every time you report the issue of the week, you'll go in the running to win \$500. One winner will be selected each week.

Community House News

We have a level 2 controlled drop on Monday, Tuesday, Wednesday and Friday, 10am -2pm.

Tuesday lunch - please book in, phone 741 1427.

Monthly Day Club at Lyttelton community church, Winchester Street.

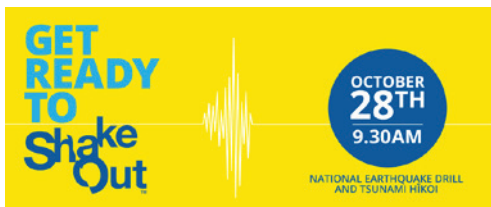
Next meeting October 20, 10 a.m to 2 p.m.

Meal deliveries and food bank continue.

Monthly morning tea with guest speaker from ECAN on October 7. Venue to be confirmed.

For more information Contact Claire or Chris
Registered Social Worker/Community Facilitator
Lyttelton Community House

P: 03 741 1427



Sign up for ShakeOut 2021!

Registrations for New Zealand ShakeOut 2021 are now open! Over 318,000 people have already signed up to Drop, Cover and Hold with us in October.

Our national earthquake drill and tsunami hikoi is happening **Thursday 28 October at 9:30am**. ShakeOut is held across the world to remind people of the right action to take during an earthquake — Drop, Cover and Hold — and to practise a tsunami hikoi (evacuation) if in a coastal area.

To take part in the drill, sign up your organisation, household, school or community group. It only takes two minutes to sign up and we'll send you all the information you need to do the drill.

Naval Point Club News

Youth Development

Amanda Norris has started as our new youth and development coordinator for our new sailing season. We look forward to building our youth teams and encouraging more people into sailing for life.

Amanda has been sailing at Naval Point Club Lyttelton for many years going through the Opti, P, Starling, 420 and Elliot programmes and looks forward to supporting our sailors to continue their sailing development.

Any queries please contact:

Amanda on sailing@navalpoint.co.nz

School Holiday Sailing Week

Monday 11th October - Friday 15th October 9.30am - 3.30pm

Open to all youth, Optimist, P Class, Starling sailors and have a go

Elliott School Holiday Week

Monday 4th October - Friday 8th October 9.30am - 3.30pm

Open to all youth 12 - 24 years with sailing experience

LEARN TO SAIL Level 1 and 2

Available Saturdays or Sundays 9am - 12noon

YOUTH SAILING

Available to those who have completed LTS 1 & 2

Optimist, P Class, Starling, Open BIC's (other classes by arrangement)

Te Reo Māori Quiz

The Review team were unable to publish during Māori Language Week but came upon these great quizzes for beginners. You might like to give them a try.

Kuwi & FriEnds Kupu Quiz - Lockdown series*

Try our 10 question Te Reo Māori Kupu Online Quiz, with kupu **[words]** from the Kuwi & Friends Māori Picture Dictionary. Get the tamariki

[kids] involved and see if you can answer all the questions without looking in the papakupu [dictionary].

*We created the quizzes during the Covid-19 lockdown 2.0. Following the demand and amazing feedback [ngā mihi!] we will be continuing on a weekly quiz, each Rāhina [Monday].

It is designed for beginners, and, you don't need to have the papakupu to do it. Kia haumaru te noho - Safe safe visit <https://www.kuwibooks.com/#new-page-1-section>

Speed Limit Changes for Banks Peninsula

After widespread review and consultation, the Council adopted changes that will reduce speed limits on roads in Akaroa, Lyttelton and other parts of Banks Peninsula. A 40km/h speed limit will be implemented on all roads in Lyttelton (with the exception of Norwich Quay/Gladstone Quay), as well as the roads in Akaroa town centre. Many rural roads will have significantly lower speeds. Most changes are expected to be in place later this year, although changes in Lyttelton are set to occur early next year. More information is available

<https://newsline.ccc.govt.nz/news/story/speed-limit-changes-for-banks-peninsula>

The next Banks Peninsula Community Board

meetings are:

Monday 11 October
10.00am Akaroa

Monday 1 November
10.00am Lyttelton

Cressy Trust Grants

Are you over 65 and live around the Harbour Basin?

The Trust can fund anything that will benefit over 65's in the Lyttelton Harbour Basin with a maximum grant of \$2,000 towards the health, welfare needs or hardship of the elderly. We've given grants for social events, firewood, home repairs, hearing aids, and transport projects amongst other things.

Applications can be submitted at any time. The trustees meet four times each year

and decisions are notified in March, June, September and December. Visit <https://cms.cressytrust.org.nz/cressy-trust/assets/hd7rpuz2wyogcg0w> for an application form or contact the Secretary Helen Cobb on 021 0343874 or 03 328-9197 for any assistance.

Lyttelton's Fruit and Veg Collective

This is a joint initiative between Project Lyttelton's Lyttelton Harbour Timebank and the Opawa Fruit and Veg Coop via the Foodtogether programme from St Albans. We want as many households as possible in the Lyttelton Harbour to benefit. There is no joining fee and anyone in the community can participate. Payment is required either the Monday, Tuesday or Wednesday the week prior by Internet Banking.

Options half or full bag, cost is \$7.50 or \$15. Collection is from the Lyttelton Recreation Centre 25 Winchester St Lyttelton 12.30-4pm every Wednesday or 10-4pm every Thursday. Bags not collected by 4pm Thursday will be donated to local people.

If you would like to participate, please create your order by setting up an internet banking payment the week prior. Payment is to Project Lyttelton.

Bank Account Number is Project Lyttelton Inc 02 0864 0079190 003

Please also include the following information with your internet banking payment:

Particulars _ _ _ _ (first 4 letters of your last name e.g. Smith = SMIT)

Code 1x \$15 (or 1x \$7.50 the quantity you want to order)

Reference Fruit and Veg

Contact Wendy Everingham text. 021 047 6144 for more information.



Historical Artifacts Missing!

A plea from St Joseph the Worker community, Lyttelton, who are planning a memorial on the site of the 1865 church grounds. This will be a memorial to past generations of parishioners and for present and future generations to be informed and to enjoy. St Joseph's is an important part of Lyttelton's heritage and legacy. After the church was demolished following the 3 devastating earthquakes, artifacts were, regrettably, taken without permission from the site and from a padlocked container. We really need these artifacts to be returned - or if they have been incorporated into homes etc - that a decent donation be gifted towards the cost of building the memorial. We are especially hoping for the return of the foundation stone. There will be a period of amnesty until the 30th of September 2021 to return any artifacts, with no repercussions. The community would appreciate the artifacts being returned to the site of the church in Winchester Street, Lyttelton. Confidentiality is guaranteed for anyone wishing to contact the committee on 027 698 0057.

The bank account number for donations is: 03-1599-0125719-000

Thanking you in anticipation,

St Joseph the Worker Memorial Committee



SailGP Cancelled

Due to the ongoing challenges associated with the global Covid-19 pandemic, SailGP has confirmed the cancellation of the New Zealand Sail Grand Prix. SailGP and ChristchurchNZ remain equally engaged in bringing SailGP to Christchurch and Banks Peninsula and are continuing to explore options to allow for the possibility of hosting the event in the future.

What's New at the Lyttelton Recreation Centre?

Lyttelton Youth Group is back!

All going to plan, the Lyttelton Youth Group will resume at the Rec Centre during the first week of the 4th school term in October with the Girls group running on a Thursday and both the year 7 and 8 and Highschool groups running on a Friday.

Keep an eye on the Lyttelton Rec Centre Facebook page for more details to follow.

Basketball Holiday Programme

The Lyttelton Rec Centre are teaming up with Pioneer Basketball Club to run a basketball programme at the facility on Monday 11th October 2pm – 4pm.

Who is it for?

13 – 18 year old's, cost is \$10 per person.

What to expect:

Fun games and activities to help improve your skillsets as well as a 3v3 mini competition.

Places are limited, to register please email the LR

Naval Point Work on Track

Work at Naval Point Te Nukutai o Tapoa continues despite the cancellation of SailGP. Phase one of the Development Plan is still on track to be completed by the end of November this year.

Work being undertaken at the site includes completing the storm water drainage works and the installation of kerbs/concrete beam followed by pavement works. Utilities are also being upgraded. The upgrade of public toilets on Oxford Street is also continuing.

Lyttelton Kidsfirst:

After a delay due to ongoing Covid-19 restrictions, Enable will now be undertaking trenching work at the right of way to 33 Winchester Street for fibre installation at Lyttelton Kidsfirst on Saturday, 25 September.

Individuals will not be able to use the right of way on that day until the work is completed.

Want To Book A Space At The Lyttelton Rec Centre?

Casual bookings for the Squash Courts, Trinity Hall, Sports Hall and Mezzanine Floor area (Pool and Table Tennis tables) can be made online at www.pay2play.co.nz or at the front desk Monday - Friday 10am - 4pm and on a Saturday 10am - 1pm.

For all other enquiries including hiring the Community Meeting Room or a space to run classes or programmes, please contact the Facility Manager on 021 1116069 or manager@lrct.org.nz

Dyers Pass Road work winding up

We'll be removing traffic management on Dyers Pass Road at the end of next week as we finish work to install three kilometres of safety barriers. The new guardrails are being installed at high-risk locations, which should reduce the severity of crashes where vehicles would have left the road.

The last night closure will be on Wednesday 29 September, and the traffic lights and construction equipment will be removed over the following two days.

We'll be doing some tidy up work the following week including sealing, line marking and extra maintenance work as the road and slopes settle down. This work will be done outside of peak hours with a stop/go in place where needed, so please continue keeping an eye out for work crews.

We know this work has been disruptive and has taken longer than expected. Thanks for your ongoing patience.

We're continuing to work within Covid-19 Alert Level 2 guidelines, so please be mindful of keeping a safe distance (a minimum of two metres) from our traffic management and construction teams if you're passing through Dyers Pass Road.

We're Working in Your Area

Updates

Cressy Terrace Tennis Courts: HEB Construction is undertaking a renewal of the tennis courts in Cressy Terrace (between 16 and 24 Cressy Terrace) in Lyttelton. Work is set to begin on 11

October and run until mid-November. For more information on the renewal works please see the attached flyer below.

Adventure Activities Health & Safety Regime

– Public Consultation Opens

The Government has announced the start of the public consultation into the health and safety regime for registered adventure activities. Following the Whakaari/White Island eruption in December 2019, a targeted review found that safety standards in adventure activities were improving, but identified certain areas that required strengthening. More information on the consultation, including where to provide feedback (open through 5 November) is available at <https://www.mbie.govt.nz/have-your-say/adventure-activities>

Become a Marine Mammal Medic Project Jonah

Each year, hundreds of whales, and dolphins strand on our shores. Whilst some are sick or injured, others are healthy and just need a helping hand back out to sea.

But saving whales isn't as easy as it looks, and successful rescue often depends on properly trained volunteers. That's where you come in.

You can become a Marine Mammal Medic with our one-day course. It costs \$125 (\$95 for students with valid ID) and once trained you'll be added to our national callout list. That means that when a stranding occurs your lifesaving skills can be called upon.

Next course in Christchurch Saturday November 6th for more information visit <https://www.projectjonah.org.nz/>



Fruit and Veg - What's in Season?

Thanks to the Lyttelton Farmers Market here's a list of what fruit and veg is in season now.

Eat Seasonally

SEPTEMBER



AVOCADO



BROCCOLI



BROWN ONION



CABBAGE



CARROT



CAULIFLOWER



CELERIAC



GARLIC



GRANNY SMITH
APPLE



GRAPEFRUIT



KIWIFRUIT



LEMON



LIME



MUSHROOM



NAPPA
CABBAGE



ORANGE



PEAR



POMEGRANATE



POTATO



PUMPKIN



RADICCHIO



RADDISH



RED ONION



SUGAR SNAP PEAS



TANGARINE



TOMATO



TURNIP



The Lyttelton Club Inc was sharing a COVID-19 Update.

18h ·

CLUB UPDATE 21st SEPTEMBER

Following the announcement yesterday the club will still be operating under Level 2 for the next 2 weeks with the same level 2 rules that have been in force.

We will be open this Wednesday 2pm - 9pm

Thursday and Friday from 2pm - late and Saturday and Sunday 12pm till late.

The Restaurant will be open - please call the bar or send a message through Facebook so we can book your table and use the glass door entrance on Coleridge Terrace if you are visiting for your booking.

The Restaurant hours this week are Wednesday - bar snacks Thursday - Sunday 4pm bar snack menu, 5pm onwards main menu.

What does this still mean for the club?

Members must wear a face mask wherever possible (entering and leaving, using the bathroom) except when eating and drinking. Face masks in the gaming room are compulsory - NO FOOD OR DRINKS allowed in the gaming room.

Members MUST scan or sign in each visit and follow physical distancing rules

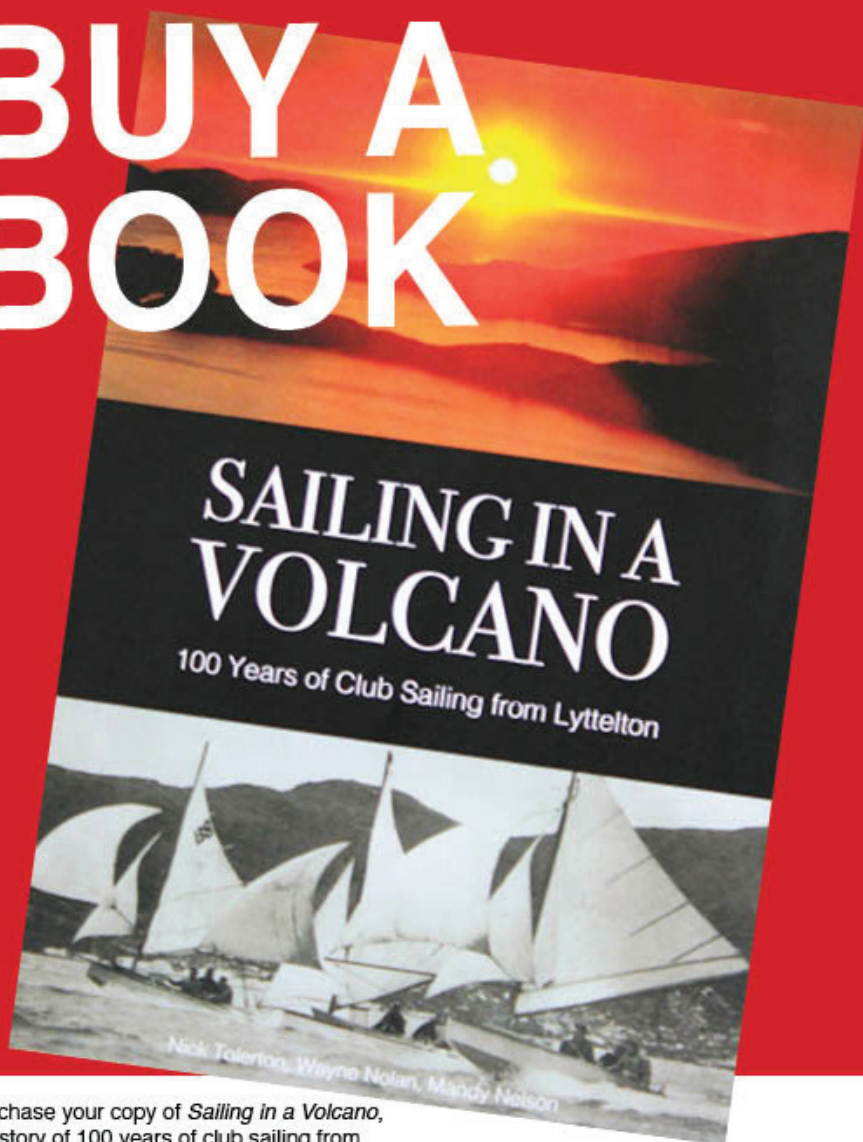
Please remain seated at your table unless you are entering or leaving the club or using the bathroom or gaming room.

The staff are looking forward to seeing you at our great facility once again so please be patient and kind while we work through these operating rules. Help us stay open by simply following the rules.

Thanks for your continued patience and understanding.

The team at Lyttelton Club — sharing a COVID-19 Update.

BUY A BOOK



Purchase your copy of *Sailing in a Volcano*, a history of 100 years of club sailing from Lyttelton. Buy a book at the launch, or order your copy in advance online.

Book launch: Friday 12th November 2021

Where: Naval Point Club Lyttelton

Free event, cash bar, speeches

Book sales and details: www.navalpoint.co.nz



eliot sinclair

BANKS PENINSULA **Walking** **Festival** **2021**

4 FUN FILLED WEEKENDS
NOVEMBER 6-28

BOOKINGS ESSENTIAL

Book at www.eventfinda.co.nz
search Banks Peninsula Walking Festival 2021



Visit www.bpwalks.co.nz
to see the full festival programme and map

Enquiries bpwalkingfest@gmail.com
or phone Sue 021 0417 402



Banks Peninsula
Walking Festival

GALA DINNER



Celebrate 100 Years of Club Sailing From
Lyttelton at the Eliot Sinclair
CYMBC/NPCL Centenary Dinner

When: 13th November 2021

Where: Rydges Hotel, Latimer Square

Tickets: \$95pp or \$900 for table of 10

Ticket sales and details: www.navalpoint.co.nz



eliot sinclair

Weekly Events

Eruption Brewing

Tuesday Learning Exchange Community Conversations 7.15pm

Sunday Session 3-6pm

Lyttelton Arms Happy Hour

Every day 5-7pm

Lyttelton Top Club

Wednesday Housie 7pm

Thursday 5-6 pm 7-8pm

Friday Happy Hour 4-6pm

Saturday Happy Hour 6-7pm

Markets every Saturday - Rain or Shine

Lyttelton Craft and Treasure Market

Collets Corner 9-1pm

Lyttelton Farmers Market 10-1pm

Lyttelton Farmers Market

10-1pm. Every Saturday rain or shine.

farmersmarket@lyttelton.net.nz

Lyttelton's Retro Art and Craft Bazaar 9-1pm

The Loons

Wednesday Al Park and Friends 8pm

Wunderbar

Open Wednesday to Sunday

Single Events

Tuesday Sept 28th

Eruption Brewing Project Lyttelton AGM 6.30pm

Eruption Brewing Learning Exchange 7.15pm

LPC - Kim Kelleher

Title: Opportunity and Challenge –

LPC's Path to Net Zero Carbon Emissions

Thursday September 30th

Wunderbar Comedy Night 8.30pm

Sunday October 2nd

Quail Island Treasure Hunt 10.15am

Tuesday October 5th

Eruption Brewing Learning Exchange 7.15pm

ResourceFull - Waste Minimisation with

Sarah Pritchett from WasteMINZ

Friday October 8th

The Loons Garageland - Last Exit to Garageland

25th Anniversary Tour 8pm

Saturday October 9th

Wunderbar Other Voices 9.30pm

The Loons Marlin's Dreaming -

Hasten Album Release Tour 8pm

Coming Up

Christchurch Heritage Festival –

9 to 25 October 2021

Celebrate and explore our rich and diverse heritage, with over two weeks of walks, open days, exhibitions, performances and more!

October 17th

~~Governors Bay Fete~~

NOW POSTPONED UNTIL NEXT YEAR.

Community Conversations

@ Eruption Brewing

Every Tuesday Evening 7.15pm

Upcoming speakers

26 October

Community Energy Action - How to Create a Healthy, Energy Efficient Home - they will give us independent energy advice, outline the services they offer and discuss subsidy options.

New dates yet to be confirmed.

The Seafarers Mission story with John McLister

Neil Struthers - the past and the future. This event did not run due to lock down - we will reschedule this.



Galleries

Stoddart Cottage Gallery is located at historic Stoddart Cottage, Diamond Harbour, birthplace of well-known Canterbury impressionist painter Margaret Stoddart (1865 -1934). It is just a short walk up from the Diamond Harbour ferry.

October Exhibition:

Kintsugi: embracing the scars of healing - Group show: presented by Artists Against Slavery

Kintsugi is group show presented by Artists Against Slavery that explores the concept of brokenness, its repair, and how it can become part of a new whole. Kintsugi is the Japanese art of restoring broken ceramic vessels with lacquer and gold, with the resulting object becoming more valuable than before. As a philosophy, it treats breakage and repair as part of the history of an object, rather than something to disguise. It highlights cracks and repairs as simply an event in life, rather than allowing its service to end at the time of its damage or breakage.

Interpretations of Kintsugi are made in the exhibition through ceramics, pottery, painting and printing. Its artists range from established

professionals to emerging practitioners, largely from Christchurch and the Banks Peninsula. The artists are Tania Bostock, Nina Brown, Julia Dower, Bev Frost, Renate Galeztko, Naomi Goto Garrett, Sarah Harper, Aamira Jain, Jane McCulla, Janie Porter, Gaby Reade, Soon-Lee Spicer, Kaylene Worrall.

As an organisation, Artists Against Slavery (AAgS) raises funds to help with the rehabilitation of women and children who have been trafficked and abused. A great deal of shame can hang over a victim, usually for life. Rehabilitation helps victims to see that they are of great value together with their painful history. AAgS will take a commission of 10% but artists can give more if they choose. AAgS gives 100% of money raised to Hagar NZ who work with victims of human trafficking and abuse in Afghanistan, Cambodia and Vietnam.

Exhibition dates: 1-25 October 2021

Opening event: Saturday 2nd October 4-6pm

Gallery Opening Hours: Friday-Sunday 10am-4pm and public holidays (including Labour Day Monday)

2 Waipapa Avenue, Diamond Harbour



ILLUMINATE LIGHT & SOUND DRIVE-THROUGH SHOW

22nd-26th September 2021

Ferrymead Heritage Park

6:30pm-LATE!

(30 minute time slots)

COMMUNITY ACTIVITIES IN AND AROUND THE HARBOUR

MONDAY

Community Choir

7.30pm Winchester St Lyttelton.
All welcome. Jillie 021 152 8068

Lyttelton Reserves Management Committee

Next proposed meeting is Monday October
18th 7-9pm. Lyttelton Community Boardroom
25 Canterbury St Lyttelton. Will only proceed if
Covid 19 room numbers can be complied with.

Lyttelton Rotary Club

7pm on the 2nd and 4th Monday of each month
Lyttelton St John's station London St. New
members welcome. Contact Ingrid Thomas
Phone: 377 9758 for details.

Lyttelton mother4mother

Breastfeeding support group.
10-12pm For more information contact
Andrea Solzer andrea.solzer@web.de

Lyttelton Scouts

6.00 - 7.30pm
Contact Ruth Targus 021 259 3086

Open Adult Ballet

11:00am to 12:00pm. Lyttelton Rec Centre

TUESDAY

Community House

Shared Lunch 12.00pm 7 Dublin Street.
Make new friends

Harbouryoga

6pm 105 Bridle Path Road

LIFT Library

10.00-1pm Foyer Rec Centre 25 Winchester St

Lyttelton Library Story Times

11.00-11.30am

Diamond Harbour Bridge Club

Social Play restarting for 2021 from 19th January
on Tuesdays at 1.30pm in the Committee Room,
Diamond Harbour Community Centre, Waipapa
Ave, Diamond Harbour. No partner required, table
money \$4.00 includes afternoon tea. Visitors very
welcome. Contact Pauline Croft. Ph 329 4414 or
027 363 6302.

Lyttelton St John Youth Division

youth@stjohn.org.nz. St John Ambulance Station
52 London St, Lyttelton

WEDNESDAY

Diamond Harbour Bridge Club

Restarting for 2021 from 13th January on
Wednesdays from 6.40pm – 10pm at the Diamond
Harbour Bowling Club, off Purau Ave, Diamond
Harbour. Table money \$5.00 includes supper.
Visitors very welcome.

Enquiries or to find a partner contact Pauline Croft
Ph 329 4414 or 027 363 6302.ww

Diamond Harbour Singers

7.30 - 9.00pm. Every Wednesday in Stage Room of
Community Hall. All welcome. Margie 329 3331

Lyttelton Community Garden

10am Every Wednesday. Meet at the garden
behind the Lyttelton Pool in Oxford Street.
For more information 328 9243

Lyttelton Cubs

6.00 - 7.30pm Contact Ruth Targus 021 259 3086

Lyttelton Garage Sale

10-4pm 54a Oxford Street, Lyttelton
Second Hand Bargains and more.

Lyttelton Harbour Fruit and Vegetable Collective

Trading between 12.30 to 4pm.
Add \$7.50 and @\$15 bags of vegies.
Pay online a week in advance
The Lyttelton Recreation Centre, 25 Winchester, St
Lyttelton. Contact Wendy Everingham 0210476144

Lyttelton Library Wednesdays Knit and Yarn

10.00-12.00pm

Lyttelton Playgroup

At Kidsfirst Lyttelton
12.30pm- 2.30pm 33 Winchester St Lyttelton
Call 03 328 8689 for more information

Library of Tools and Things

5-7pm 25 Canterbury St (in garage)
Contact LytteltonLoTTs@gmail.com

Stoddart Cottage Artisans group

Meets monthly on the third Wednesday 4pm at
Stoddart Cottage. For more information contact
secretary Christine Davey kcjoynt@xtra.co.nz. See
also our Facebook page.

Tai Chi

1.30 2.30 Lyttelton Recreation Centre
Bookings via WEA

THURSDAY

Diamond Harbour Tai Chi Group

11am start Diamond Harbour Community Hall.
For more details, please email to 88daruma@gmail.
com and we will send you our information letter.

Governors Bay Volunteer Fire Brigade

7.00pm Governors Bay Fire Station
Weekly Training, New Members Welcome

Harbouryoga

6pm 105 Bridle Path Road

LIFT Library

10.00-1pm Foyer Rec Centre 25 Winchester St

Lyttel Tumblers

9.30-11am Lyttelton Recreation Centre

Introduction Course to Ballet for Adults

6:00pm to 7:00pm. Lyttelton Rec Centre

Lyttelton Garage Sale

10-4pm 54a Oxford Street, Lyttelton
Second Hand Bargains and more.

Lyttelton Volunteer Fire Brigade

7.00pm Lyttelton Fire Station
Weekly Training, New Members Welcome

Lyttelton Strollers

10am start at the Lyttelton Library, London
Street Lyttelton. For more information contact
Community House. Ph 741 1427

FRIDAY

LIFT Library

10.00-1pm Foyer Rec Centre 25 Winchester St

Dance Fitness

Lyttelton Recreation Centre 25 Winchester
St. 10.30am

Harbouryoga

9.30am 105 Bridle Path Road

Lyttelton Garage Sale

10-4pm 54a Oxford Street, Lyttelton
Second Hand Bargains and more. .

Lyttelton Library Fridays Babytimes

10.30-11.00am

Lyttelton Yoga

9.30am - 10.45am. 25 Winchester St Lyttelton Rec
Centre. Contact Rebecca Boot 021 071 0336

SATURDAY

Library of Tools and Things

10-1pm 25 Canterbury St (in garage)
Contact LytteltonLoTTs@gmail.com

LIFT Library

10.00-1pm Foyer Rec Centre 25 Winchester St

Harbouryoga

9.00am Trinity Hall Lyttelton Rec Centre

SUNDAY

St Saviour's at Holy Trinity

17 Winchester Street. 9.30am Service with Holy
Communion. All Welcome

GROUPS

Banks Peninsula Community Board

10am First and Third Monday of each Month
Meetings Open to the Public

Banks Peninsula Water Zone Committee

4pm usually 3rd Tuesday each month at different
locations around the peninsula. Meetings open
to the public. If your community has a specific
waterway issue you'd like to discuss, get in touch
and we may be able to have a meeting in your
neighbourhood. fb.com/canterburywater

Bay Harbour Toastmasters

6.30pm. Every 2nd and 4th Wednesday of the month
Lyttelton Community Board Room, 25 Canterbury St
Contact: Jann Meehan, 021 263 1040

Civil Defence Welfare Response Team for the Harbour Basin

Diamond Harbour: Jill Pattinson 021 062 3112
Governors Bay : Jan Millar 027 208 7310

Lyttelton Harbour Business Association

For more information contact: admin@lhba.co.nz

Lyttelton Museum Historical Society

info@lytteltonmuseum.co.nz

Lyttelton Netball Club

Lytteltonnetball@gmail.com

Lyttelton Rugby Club

For details visit the club Facebook Page
or contact Linda Preddy
accounts@marinetec.co.nz
027 3859392

Little Ship Club Canterbury

We meet on the 3rd Thursday of the month
usually at Naval Point Club Lyttelton from
7.00pm. The club has regular guest speakers and
undertakes a large range of activities that increase
the knowledge and skills and enjoyment of its
members and for the benefit of yachting generally.
All welcome
www.littleshipclubcanterbury.wordpress.com

Lyttelton Time Bank

Drop In Lyttelton Library every Tuesday 10-12pm
328 9243 www.lyttelton.net.nz

Lyttelton Toy Library

Runs every second Saturday out of the Lyttelton
Recreation Centre Gym between 10am - 12pm.
Low annual membership with no lending fees.
Toys for 0 -5 y/o. Details available via <https://www.facebook.com/lytteltontoylibrary/>

Naval Point Old Salts Lunch

The Old Salts Lunch is being held every second
Friday bimonthly.
Contact Richard Madderson
03 328 7029 manager@navalpoint.co.nz

Narcotics Anonymous Lyttelton Meeting

Monday 6:30 pm - 7:30 pm
The Lyttelton Community House
7 Dublin Street Lyttelton, Christchurch

Thursday 6:30 pm - 7:30 pm
Lyttelton Community Board Room
25 Canterbury Street, Christchurch

LOCAL EXPORTS

Andrea Dahl Wedding Celebrant	0274319963 Contact: Andrea Dahl	andrea@manaakimai.co.nz www.manaakimai.co.nz
Ausmic Electrical 9 Governors Bay Rd, Cass Bay, Lyttelton 8082	021 156 3436 Contact: Mick Bennett	Mick@Ausmicelectrical.co.nz www.facebook.com/Ausmicelectrical/
Blue Fusion Web Design	021 027 05450 Contact: Dana Dopleach	dana@bluefusion.co.nz www.bluefusion.co.nz
Building on Basics Financial Advice and Planning	0299737911 Elise Vine	elise@bob.kiwi.nz www.buildingonbasics.co.nz
CWEA Canterbury Workers' Educational Association 59 Gloucester Street	03 366 0285	admin@cwea.org.nz www.CWEA.ORG.NZ
Harbour Co-op 12 London Street Lyttelton	03 328 8544	shop@harbourcoop.co.nz
Ray White Next Step	020 4172 1510 Contact: Yvette Wright	yvette.wright@raywhite.com www.rwferrymead.co.nz
LUMEN Engineering Design 210 Hazeldean Road, Sydenham	03 377 1546 Contact: Dan Tombleson	hello@lumen.net www.lumen.net
Lyttelton Port Company Waterfront House, 37-39 Gladstone Quay, Lyttelton 8082	03 328 8198	allreceptionists@lpc.co.nz www.lpc.co.nz
Lyttelsoft For all your accounting needs 7 Hyllton Heights, Lyttelton 8082	03 328 8671 or 021 137 4103 Contact: Penny Mercer	penny@lyttelsoft.co.nz www.lyttelsoft.co.nz
Min Sarginson Real Estate 53 London Street, Lyttelton	03 3287273 Agents: Steve Hanrahan	lyttelton@min.nz www.min.nz
Printable Solutions 92 Division Street, Riccarton	03 377 66 44 Contact: Ange Hodgson	operations@printable.co.nz www.printable.global
Project Lyttelton Lyttelton Farmers Market	033289243	www.lyttelton.net.nz farmersmarket@lyttelton.net.nz
Thea Mickell Services 7 Dublin Street, Lyttelton	03 328 8849 Contact: Thea Mickell	admin@theamickellservices.co.nz www.communityfunding.co.nz

thelyttelldirectory

2021 Support local businesses around the harbour

EAT, DRINK, DINE

Coffee Culture 18 London Street, Lyttelton 8082	033 287 080 Contact: Leona & Marten Cooper	Talk@Coffeeculture.co.nz www.coffeeculture.co.nz
Diamond Harbour Eatery and Bar 21 Waipapa Avenue, Diamond Harbour	03 3294465 Contact: Katik	diamondharbour10@gmail.com
Fishermans Wharf 39 Norwhich Quay, Lyttelton 8082	033 287 530 Contact: Pj Gemmel	Contact@Fishermanswharf.nz www.fishermanswharf.nz
Ōtoromiro Hotel 52 Main Road, Lyttelton 8971	03 3299433 or 0275 329160 Contact: Jeremy Dyer	info@governorsbayhotel.co.nz www.governorsbayhotel.co.nz
Lyttelton Arms 17A London Street, Lyttelton 8082	03 328 8085 Contact: Caroline & John Quinn	caroline@lytteltonarms.co.nz www.thelytteltonarms.co.nz
Top Club 23 Dublin street, Lyttelton 8082	03 328 8740	lytteltonclub@gmail.com www.facebook.com/lytteltonclub/
Wunderbar 19 London Street, Lyttelton 8082	03 328 8818 Contact: Alex and Vanessa	hi@wunderbar.co.nz https://wunderbar.co.nz

HEALTH & BEAUTY

Blue Cottage FB	328 8155 Contact: Janette Kennedy	
Lyttel Beauty 32 Voelas Road, Lyttelton	0212973885 Contact: Emma Chambers	Lyttelbeauty@Hotmail.co.nz
Health Check Clinic Rapaki	03 3289415 Contact: Christina Henderson	rapaki@extra.co.nz
Moving Back to Balance Gentle holistic bodywork	027 368 6515 Contact: Janet Taylor	taylor-smyth@slingshot.co.nz
Lyttelton Recreation Centre FB	0211116069 Contact: Nathan Mauger	reccentremanager@lyttelton.net.nz
Oceanside Jui Jitsui 56 Leeds Street, Phillipstown, moving to Ferrymead	027 826 6804	https://osjj.nz Contact: Hayden Smith
Personal Trainer & Consultant www.workplacedevelopmentconsultants.com	0211992582 Contact: Kevin Hurl	workplacedevcon@gmail.com
The Well Studios	027 204 1224 Contact: Jen Rice	hello@thewellstudios.co.nz www.thewellstudios.co.nz

thelyttelldirectory

2021 Support local businesses around the harbour

THINGS TO DO

Airborn paddling Inflatable SUP and kayak hire	022 0318420 Contact: Joe Jagusch	info@airbornpaddling.nz www.airbornpaddling.nz
Black Cat Cruises Level 2, 5 Norwich Quay, Lyttelton 8082	0800 436 574 Paul Milligan	sales@blackcat.co.nz www.blackcat.co.nz
Bosman Ballet Flow Trinity Hall Lyttelton Rec Centre	027 316 3631 Contact: Celia Bosman	celia@bosman.nz www.bosman.nz
Christchurch Attractions	03 366 7830	caryn@christchurchattractions.nz www.christchurchattractions.nz
Hassel - Free Tours 296 Prestons Road, Marshlands, Christchurch	03 385 5775 Contact: Raina Roberts	bookings@hasslefree.co.nz www.hasslefree.co.nz
Jet Junkies Erskine Point Marine Drive Lyttelton	022 153 0780 Contact: Kevin	kevin@jetjunkies.co.nz http://jetjunkies.co.nz/
Ohinetahi House & Gardens 31 Governors Bay Teddington Road	3299 852 Contact: Ross Booker	info@ohinetahi.co.nz www.ohinetahi.co.nz
Stoddart Cottage Gallery Diamond Harbour	021 776161	info@stoddartcottage.nz

PLACES TO STAY

Dockside Accommodation 22 Sumner Road, Lyttelton 8082	021 152 3083 Contact: Julian Cross	dockside@fastmail.com www.lytteltonaccommodation.co.nz
Governors Bay B&B 851 Governors Bay Road, Lyttelton 8082	329 9727 Contact: Eva Mason	eva@gbbedandbreakfast.co.nz www.gbbedandbreakfast.co.nz
Ōtoromiro Hotel 52 Main Road, Lyttelton 8971	03 3299433 or 0275 329160 Contact: Jeremy Dyer	info@governorsbayhotel.co.nz www.governorsbayhotel.co.nz
Manaaki Mai 99, Purau Port Levy Road, Purau	0274319963 Contact: Andrea Dahl	andrea@manaakimai.co.nz www.manaakimai.co.nz
The Rookery 9 Ross Terrace, Lyttelton 8082	03 328 8038 Contact: Rene Macpherson	rene@amma.co.nz www.therookery.co.nz

To become a member of the Lyttelton Harbour Information Centre
please contact Our office manager 328 9093 or email office@lytteltoninfocentre.nz.

Sea and Shore of Whakaraupō

Picturing past times in the harbour

Exhibition at Lyttelton Library

9–30 October 2021

christchurchcitylibraries.com



Image Reference ID: CCL-PH10-S-CW-048

Christchurch
City Council



Kintsugi



1 – 25 October 2021

Stoddart Cottage Gallery Diamond Harbour

In support of Artists Against Slavery

Opening Event: 4 - 6pm on Saturday 2 October. All welcome.

