

# LYTTELTON REVIEW

July 2021 • Issue: 280

Purau • Diamond Harbour • Church Bay • Charteris Bay • Governors Bay • Rāpaki • Cass Bay • Corsair Bay • Lyttelton

Purau • Te Waipapa • Kai-o-ruru • Te Wharau • Ōhinetahi • Te Rāpaki-o-Te Rakiwhakaputa • Motu-kauati-rahi • Motu-kauati-iti • Ōhinehou



**In This Edition:** Charities Commission, Community Board  
News, Te Ūaka The Lyttelton Museum, Sail GP

**Next Issue print date:** Issue 281, 20<sup>th</sup> July 2021

**Content Deadline:** 5pm 16<sup>th</sup> July 2021.

Cover Pic: This weeks great cover photo is from Jane Davies

A reader sent us a request for Maori place names on the cover. After a bit of work, checking and approving we now have them. Thank you to the people that helped us.

## The Review

Is a Lyttelton Harbour Information Centre initiative designed to keep our community informed with what is going on around the harbour. It's also an opportunity to showcase the people and places that other wise would go under the radar. Our community connections ensure we know what's going on in the wider community and can share the news with you all. A big thank you goes out to all the contributors and our funders Rata Foundation and Christchurch City Council Strengthening Communities who enable the hard copies to be printed each edition. Similarly to Wendy Everingham for writing and editing and Jenny-Lee Love for design and production. If you have any local events, news or stories you would like included we'd love to hear from you.

### Wendy Everingham

Mobile: 021 047 6144

Email: [review@lytteltoninfocentre.nz](mailto:review@lytteltoninfocentre.nz)

Content Deadline: 5pm Friday

Similarly if you would like to join our directory or have any advertising questions please contact Lyttelton Information Centre Manger  
Office: 328 9093  
Email: [office@lytteltoninfocentre.nz](mailto:office@lytteltoninfocentre.nz)

### Subscribe to the Review:

To subscribe please send an email with "subscribe me" in the header.

In 2021 the Lyttelton Harbour Review is produced fortnightly. Any important information between times will be emailed as a Lyttel Broadcast if necessary.

### Hard copies are available at:

The Lyttelton Arms  
Leslies Bookshop  
Lyttelton Healthcentre  
Lyttelton Community House  
Lyttelton Harbour Information Centre  
Lyttelton Library,  
Lyttelton Top Club

**Back copies are available on our website**  
**[www.lytteltoninfocentre.nz](http://www.lytteltoninfocentre.nz)**



**Nice to see you back at the  
Information Centre.**

## Our 2021 Representation Review has concluded

On Friday 18 June, councillors adopted the final proposal for Christchurch's representation arrangements, deciding how many elected members there should be and what communities they should represent at the next local elections in 2022. There have been a few tweaks to the current ward boundaries, but overall the review resulted in a proposal for Christchurch to continue to be represented by a Mayor, 16 councillors, and 37 community board members representing 16 wards. The Mayor will be elected 'at large' by the whole city, and each ward will elect its own councillor and community board members.

The biggest change involves reducing the number of community boards from seven to six, by dividing the Linwood-Central-Heathcote Community Board and merging each ward into the three nearby Community Boards with common interests – the Linwood ward will join Waitai Coastal-Burwood, the Central ward Waipapa Papanui-Innes, and the Heathcote ward Waihoru Spreydon-Cashmere.

You can see summary maps in the Council report and if you have any questions, please get in touch at [engagement@ccc.govt.nz](mailto:engagement@ccc.govt.nz)  
You can make appeals and objections from 25 June to 26 July at Have Your Say.  
The final proposal will now be referred to the Local Government Commission for a final determination in early 2022 – after any objections have been resolved, and ahead of the next local body elections in October 2022.

# Charities Commission


Our most recent statistics show that more than 200,000 New Zealanders volunteer their time to support registered charities every week, and their mahi adds up to more than 1.5 million hours worked on average every week!

Every year we collect information on volunteering as part of the annual return process for registered charities. This information helps to tell the story of volunteering and its impact in Aotearoa.

The latest figures show that charities around the country have been doing more with less. While there's been a 4% decrease in the average number of volunteers per week, there has also been a 3% increase in the mahi they do. This shows the resourcefulness and hard work of charities. For more volunteering insights, such as which organisations have the highest number of volunteers and diversity of volunteer involvement within the charitable sector, Charities Services recognises and thanks all volunteers of registered charities for their ongoing contribution to making Aotearoa a better place for all of us.

## Registered Charities reported average number of volunteers and volunteer hours year on year

Calendar years from 1 January to 31 December



	Average number of volunteers per week	Average of all volunteer hours per week
2010	462,179	1,560,776
2011	475,885	1,984,424
2012	415,312	1,650,006
2013	403,955	1,762,303
2014	459,775	2,648,923
2015	495,635	2,860,838
2016	301,241	1,577,226
2017	230,308	1,452,000
2018	233,396	1,469,634
2019	223,619	1,513,480

Data used in "Registered Charities reported average number of volunteers and volunteer hours year on year" sourced from reporting by calendar year. Data for the year 2020 is not complete as not all charities have been required to file by this date (filing due 6 months after financial end of year).

Data used in "Top five charities", "volunteers and volunteer hours per reporting tier" and "volunteers numbers within each main sector" sourced from the most recent annual return filed with Charities Services by registered charities as at 11 May 2021.

## Top five charities with highest numbers of volunteers per week (average)



1 PLAYCENTRE AOTEAROA (Group registration)					
Registration number	Volunteers per week	Hours per week	Main sector name	Areas of operation	
CC5368	9,000	36,000	Education/training/research	Nationwide	

2 ST JOHN (Group registration)					
Registration number	Volunteers per week	Hours per week	Main sector name	Areas of operation	
CC35235	8,480	74,251	Health	Nationwide	

3 SPCA NEW ZEALAND (Group registration)					
Registration number	Volunteers per week	Hours per week	Main sector name	Areas of operation	
CC36833	4,350	49,000	Care/protection of animals	Nationwide	

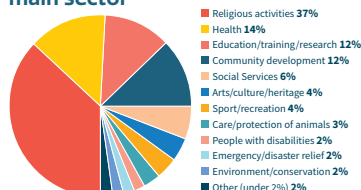
4 THE SALVATION ARMY NEW ZEALAND GROUP (Group registration)					
Registration number	Volunteers per week	Hours per week	Main sector name	Areas of operation	
CC37322	4,821	19,019	Religious activities	Nationwide, Oceania, Fiji, Samoa, Tonga	

5 ARISE CHURCH					
Registration number	Volunteers per week	Hours per week	Main sector name	Areas of operation	
CC30589	2,862	16,688	Religious activities	Nationwide	

## Volunteers and volunteer hours per reporting tier

Number of annual returns	Average volunteers per week	Average volunteer hours per week	Average paid hours per week
TIER 1	TIER 1	TIER 1	TIER 1
187	26,554	255,064	3,032,973
TIER 2	TIER 2	TIER 2	TIER 2
1,523	35,173	338,174	2,920,372
TIER 3	TIER 3	TIER 3	TIER 3
9,279	106,102	663,676	1,080,349
TIER 4	TIER 4	TIER 4	TIER 4
14,708	87,524	551,318	94,703

## Volunteer numbers within each main sector



Hope you all enjoyed our last issue  
with every page printed in colour thanks to BNS



## Community Board News

### Reuben Davidson

*A new feature for the Review. Reuben Davidson is going to write for us. He'll be keeping you informed about anything from the Council that impacts the wider Lyttelton community. Welcome Reuben.*

#### Kia ora

It's been a busy year on Community Board and it's hard to believe we are already in July. There have been many local topics and issues covered by the board, and this is a great opportunity to provide an update on a few of them.

The Long-Term Plan sets out Council's priorities for investment and spending for the next ten years and was open for public feedback through March and April this year. Many Lyttelton residents and groups made excellent submissions and I was able to chat with locals about your key issues at the school, supermarket, Farmers Market, and during some early morning visits to our Norwich Quay bus stops. I enjoyed hearing about what was important across our community. Thanks to everybody who took the time to share their thoughts and made submissions in writing or in person to Council.

There were some great wins for Banks Peninsula. The Long-Term Plan saw an investment in biodiversity and ecology with support for The Banks Peninsula Community Trust, Pest Free Banks Peninsula, and the carry forward of funding for our Reserve Management Committees. It also saw the Council drop a proposed land drainage targeted rate and the removal of parcels of land in Hunters Road and Whero Avenue, Diamond Harbour from the 'to be sold' list.

There were also some wins specifically for Lyttelton.

#### Our Council Service Desk

It had been proposed that the Council Service Desk at the Lyttelton Library would close. This would have meant that the closest service would have been at the Linwood or Beckenham

Library Service Centres. This is a significant commute and, in many cases, not practical for the kinds of local assistance and knowledge the Council Service Desk provides. Thanks to the volume of submissions received this service has been retained for twenty hours per week. It is great to have this continuity and I hope we'll continue to see the support required to keep these important Council services operational at a local community level. We didn't lose it, let's make sure we use it.

#### Design Review Panels

Over coming years, the streetscape and built environment in Port will change as many of the vacant sites in and around our town centre are built and developed. Our Design Review Panel is an important part of the development planning process to make sure what we build helps to create a future Lyttelton that respects our past and fits our future. The Design Review Panel is made up of appointed architects, urban designers and qualified professionals who receive a contribution for their time and travel costs to meet and discuss proposed developments in Port. As there hadn't been many recent developments it was proposed that the panels funding be removed from the budget. Several excellent submissions have ensured the Design Review Panel is retained. With multiple vacant sites on the main street, it will be great to have their input as future developments are proposed and progressed.

#### Refurbished Public Toilets

This is long overdue, and will no doubt be welcomed by anyone who has recently used our public toilet facility on Oxford Street. A refurbishment has been confirmed and will take place before Christmas. This will bring these facilities up to standard and make sure they



## Stage one of our Te Nukutai o Tapoa-Naval Point Development Plan is underway.

- We are asphalt sealing the car park (see map).
- Replacing the ageing water main and utilities.
- Making improvements to the foreshore.

This work, which will help the SailGP yachting event to be held in Whakaraupō / Lyttelton Harbour in January 2022, may cause disruption to access of this site.

We apologise for any inconvenience.

For more info visit:

[ccc.govt.nz/naval-point](https://ccc.govt.nz/naval-point)

Or call (03) 941 8999



Christchurch City Council

provide a better service for locals and visitors to Port. I've already had some great suggestions for how they could be more family friendly, so I'll be raising this at our next Community Board Meeting to ensure we get a much-improved facility for all users.

There is also a lot of work and planning underway for the exciting Sail GP event coming to Lyttelton in January. If you take a walk around Te Nukutai o Tapoa – Naval Point you'll see the Coastguard already in their temporary new home, and significant work taking place to have the site ready. Sail GP has helped to speed up the redevelopment of this fantastic local asset and it will be exciting to see that work continue in the future. The impacts of hosting Sail GP will be very positive. Council staff, Runanga and the events team from Christchurch NZ are working together to make sure this event runs smoothly for all of us. I will be sure to provide more of an update in a future edition of The Lyttelton Review.

And finally – please get in touch if there is anything you'd like to discuss, I'm always happy to have a chat about our local issues.

*Ngā mihi nui*

*Reuben Davidson*

*Reuben.davidson@ccc.govt.nz*

*0272 555 899*



# Let's start the rebuild - Te Ūaka The Lyttelton Museum

## Buy a Tile!

Take a look outside Lyttelton Supersave and you will see a sign board promoting the latest fundraiser for the rebuild of Te Ūaka The Lyttelton Museum. Based on the concept of a Korowai/Cloak, the fundraiser seeks to re-imagine the outside skin of the building as a Kowowai/Cloak. Each diamond shape in the outer skin has been made to represent a tile and locals and supporters of the Museum re-build are being encouraged to buy a tile. The proceeds of the tile sales will be used to build the new museum foundation. The sales serve two purposes, one to show that Lyttelton Community really supports this project and two to give external funders the confidence to invest in the project.

Rob and Cheryl de Thier, owners of Lyttelton Supersave were the first to purchase a Tile. "I totally support the new museum project and love the design of the building", said Rob. You can keep an eye on the progress of the



fundraising as you pass Lyttelton Supersave. As tiles are sold the poster will be updated with the business or individuals name who have purchased a tile. The winners of the recent Museum fundraising quiz at LAF have a tile and so do others as the tile sales campaign picks up pace.

Peter Rough, Vice President of the Lyttelton Historical Museum Society invites all locals to get behind this campaign to be part of the new history of the Museum. "We have a bold vision for our museum, and we want this new building to become part of the fabric of Lyttelton. Purchasing a tile means securing our taonga and stories of Lyttelton and the Harbour for future generations, in addition to seeing your name on our donor's wall in the new Museum".

Tiles to clad the outside of the museum can be purchased for a one-off donation of \$1500, or paid by installments over three years, with all donations eligible for a 33% tax deduction.

For information on how to donate please visit [www.teuaka.org.nz/donate](http://www.teuaka.org.nz/donate)

*Article Lyttelton Review*



# SailGP

Work to prepare Lyttelton's Te Nukutai o Tapoa-Naval Point for the prestigious SailGP 2022 yachting series has started.

Whakaraupō Lyttelton Harbour will be on the global stage when a SailGP event is raced there on 29 and 30 January 2022, after a successful bid by ChristchurchNZ last year.

The Council is fast-tracking the car park development of the Naval Point Development Plan, adopted in November 2020, to make sure the site is ready for the racing. It is also taking the opportunity to replace an ageing water main, upgrade utilities and make foreshore improvements.

It has worked with Te Hapū o Ngāti Wheke Rapaki on arranging under their cultural protocols for the decommissioning of certain buildings and ground areas before starting the work.

Christchurch City Council Head of Parks Andrew Rutledge says a lot of effort has already gone in behind the scenes before physical works could begin this week.

"We are grateful for the support and patience of the many groups who use this site, as we have worked out a way to make it ready for this exciting event and start stage one of the development plan. We have worked with stakeholders to provide alternative facilities and storage for them as these need to be relocated to free up the site for the preparation work and the event itself.

"There will be some disruption to access over the coming months while work is carried out, but the public boat ramp is operating as normal and there is car and boat parking available beside that. It is the overflow car park, next to the recreation grounds, that we are sealing with asphalt.

"The benefits of this work will be recognised long after the SailGP event has finished and are aligned with the wider development plan," Mr Rutledge says.

The works are expected to take six months to complete at a cost of just under \$4 million. Funds are coming from the existing budget that had already been set aside for the long-term development of Naval Point.

"We will continue to update users about these stage one works and are also working closely with ChristchurchNZ and SailGP to keep the community – both on the peninsula and in the city – informed about the opportunities and impacts the sailing event will have on them."

ChristchurchNZ General Manager Destination and Attraction Loren Heaphy says SailGP is a chance to showcase Lyttelton to a global audience, while allowing Kiwis the chance to see the yachting series up close and personal.

"Event planning is progressing well, and announcements will be made in the lead up to SailGP letting people know how they can view and get involved in this exciting event. A comprehensive traffic management plan will be in place, including details of how residents and spectators can access Lyttelton and Naval Point.

"We will also be working with local businesses on how they can maximise the opportunities SailGP presents."

Manaia Rehu, chair of Te Hapū o Ngāti Wheke, says they are honoured to have the event on Whakaraupō and to be representatives of Māori culture to a global audience.

"Whakaraupō is a special part of our identity and as kaitiaki, guardians, of this beautiful place, we are pleased to welcome the world to our backyard."

*Article CCC Newsline*







## First section of new safety barrier installed

Work to make Dyers Pass Road safer is progressing with the first section of safety barrier going in.

Along with installing the new safety barrier, our work crews have been excavating to make room for retaining walls and drilling anchors to support the new walls. The retaining walls will help with drainage as well as widening the road to create space for new safety barriers.

The top section of Dyers Pass Road, from above the Sign of the Takahe to the Sign of the Kiwi, remains closed to traffic at night between 7pm and 6am Sunday to Thursday nights.

There are currently two work sites - one long site on the city side of the hill, and one on the Governors Bay side of the hill.

People are advised to take the Lyttelton Tunnel if possible or allow for travel time of up to 30 minutes when travelling between Governors Bay and the Sign of the Takahe.

We expect the work to finish at the end of August.

---

## Little Ships Club News

Join the Club! The best fun you'll have for \$20!! It's time to pay \$20 again! Our membership year runs from 1 October - 30 September. We don't send subs invoices out, so if you'd like to renew for the upcoming year, please send your \$20 through now.

This small financial contribution supports buying small gifts for our guest speakers and assist with the running of other events. We also sometimes get invited to special events with limited numbers and these are available to current members only. Other benefits of membership can be found on our website

If you are not sure if you have paid then drop me an email and I can let you know. Your \$20.00 payment can be made into our bank account number 03 0802 0094950 00. Or

in cash directly at our next meeting. Please also drop us an email to let us know your details. <https://littleshipclubcanterbury.wordpress.com/contact-us/>

Cruising through the Pacific to Japan  
22 July 2021

Japan is an incredible destination for cruising. Come along and hear about some of the many places to explore and hear about an upcoming sailing rally to this fabulous destination.




---

## Lyttelton Harbour Network Meetings

Please Note Amended Dates

All are welcome to come along where you can network with others working and living in the area and hear about new projects and events.

Meetings for the year 2021 will be held on the following Thursdays at 12pm at the Lyttelton Community Boardroom, 25 Canterbury Street:

26 August

14 October

9 December

---

## Lyttelton's Garage Sale

Did you see Christchurch NZ rated our Garage Sale as one of the top ten best Opshops in Christchurch?

---

## Te Ana Marina Association AGM

This is to advise that the Te Ana Marina Association will hold its 2021 AGM on Thursday 22 July, 6pm-7pm, at Naval Point Club.

---

## We're Working in your Area - Cressy Tce Tennis Court Renewal

We're renewing the aged and 2010/11 damaged tennis courts between 16 and 24 Cressy Terrace, Lyttelton. Monday to Friday, 7am to 5pm, 21 June to 31 July 2021



## Free Basic Digital Skills Course

Kanorau Digital is offering free tutors to help you navigate websites, apps, documents, and more. For more information call 0800 526 672 or visit <https://www.kanorau.nz/w/>

## Have Your Say: Christchurch to Akaroa SH73 & SH75 Speed Limit Review

Waka Kotahi NZTA believes that our roads could be safer, and they want your opinion about speeds around schools, marae, businesses and workplaces because local people have valuable knowledge of regularly travelled roads. For more information, click [here](#). Speak to one of their team at a pop-up event:

Little River School, Tuesday 6 July 3–6pm

Tai Tapu Hotel, Tuesday 6 July 10am–1pm

The Gaiety Hall, Akaroa Saturday 10 July 11am–2pm

## We're Working in Your Area – Te Nukutai o Tapoa-Naval Point

We're sealing the carpark at Te Nukutai o Tapoa-Naval Point, as stage 1 of the wider development plan for the area. Late June until December 2021 (weather dependent) Monday to Friday, 7am to 7pm

## The next Banks Peninsula Community Board meetings are:

Monday 12 July	10.00am
Little River	
Monday 26 July	10.00am
Lyttelton	

All members of the public welcome.

## News from Lyttelton Community House.

Community Lunches 12 noon every Tuesday.

### Wednesday July 21

The Dayclub for Seniors at Lyttelton Community Church, Winchester Street will be held on Wednesday July 21 from 10 to 2 p.m.

Morning tea, lunch, music, games, movement, relaxation and some brain teasers to sharpen our winter brain and body.

On the 21st try Line Dancing by Cath from Dance to be Free

Cath will kick off some fun at 11a.m. at Lyttelton

Community Church Winchester Street  
Koha please.

Transport offered. Entry by koha.

Queries to Claire or Chris. Phone 741 1427

email [facilitator@lytteltoncommunityhouse.org.nz](mailto:facilitator@lytteltoncommunityhouse.org.nz)

### Thursday July 29

Morning tea and Guest Speaker from Compassionate Trust.

Lyttelton Fire Station. London Street.  
10 to 11.30 a.m.

Come and join us for some company, connection and kai.

Koha or bring a plate welcome.

Transport offered.

Phone Claire or Chris on 7411 427

### Thursday van outings

If you would like to come on one of our short outings on a Thursday, please contact us at Lyttelton Community House.

Phone Claire or Chris on 7411427.

### Woody's Kindling and Pinecones

\$5 bags of kindling or pine cones delivered to those in need, especially those who cannot access a vehicle.

Enquires to Claire or Chris. Ph 7411427

## Naval Point Club News

The Annual General Meeting of The Naval Point Club Lyttelton Incorporated will be held on Sunday 18 July 2021

### Polar Plunge

Last Sunday wasn't the warmest day on record, but that didn't stop 54 brave souls from completing the mid-winter Polar Plunge swimming from the floater to the ramp. I'm reliably informed that the water temperature was slightly warmer than the air temperature!



## School Holiday Sailing

We are looking at continuing Elliott training in the week 19 - 23 July. Please contact Jo at [admin@navalpoint.co.nz](mailto:admin@navalpoint.co.nz) if you have children (aged 12 up) who are interested.

Club members mid-winter lunch (incorporating OLD SALTS)

Due to circumstances beyond our control the June Old Salts lunch needed to be postponed, so to make up for that we are putting on a special mid-winter lunch for the old salts and indeed any member who wants to get out of the office for a few hours. Tuesday 9 July Wardroom open from 1200 meal from 1300 cost \$20.

---

## Predator Free Backyards Funding

The Predator Free Backyards programme offers funding for communities who wish to trap predators in their backyards, in order to help native species, thrive. We select outstanding predator free communities from around the country and give them funding to purchase trapping equipment. On top of that, we offer these groups ongoing support, information and advice.

Our goal is to have a trap in every 5th backyard in towns, suburbs and neighbourhoods in New Zealand Aotearoa who want to make their community predator free.

Funding round now open — closes 18 July 2021

Funding covers the purchase of humane traps, pre-made tunnels and materials to make your own tunnels. Humane traps are those that have been tested and meet the National Animal Welfare Advisory Committee (NAWAC) standard.

More information and apply visit <https://predatorfreenz.org>

---

## National Volunteer Week

Whoops at the Review we missed this important event at the end of June. A big shout out to all the people who help out in our harbour communities. In Lyttelton alone there are so many people supporting community activities, - the Garage Sale Team, Information Centre front desk team, Recreation Centre front desk team, sporting coaches, all the governance voluntary boards, Community House helpers, Fire Brigade Team and so the list goes on....

## NZ Parliament Submissions

Parliament's decisions affect all New Zealanders. Have your say and influence the laws passed by Parliament. You can get involved by making a submission.

Submissions open for comment now:

Construction Contracts (Retention Money) Amendment Bill - July 23rd

Inquiry on the Natural and Built Environments Bill - August 4th

Inquiry into the Review of the Radio New Zealand Charter – August 13th

Biosecurity (Information for Incoming Passengers) Amendment Bill – August 16th

---

## Event Equipment for Hire

Running an event and need equipment?

Check out the event resources that Council has to offer: <https://ccc.govt.nz/news-and-events/running-an-event>

---

## Garage Sale Mending Group

Shroom Room/Lyttelton Library if wet/cold. Every Tuesday 10.30am

Come along for a fun relaxed morning mending and sewing those items you have had lying around, share your tips/ skills with others.

---

## The Wellbeing Economy Vision

Professor Paul Dalziel and Dr Trudi Cameron are Christchurch members of the Wellbeing Economy Alliance, a global collaboration of groups, movements and individuals working together to transform the economic system into one that delivers social justice on a healthy planet. Paul and Trudi are offering this series of four evening seminars as part of the international launch of the WEAll Wellbeing Economy Policy Design Guide – see more at <https://wellbeingeconomy.org/> The seminar series is open to all (no entry fee) and each seminar will be self-contained.

**Wednesday 7 July:** Moving from growth to wellbeing in economic policy

**Wednesday 14 July:** Principles of the wellbeing economy

**Wednesday 21 July:** Wellbeing economy policy design

**Wednesday 28 July:** Wellbeing economy and business enterprise

Aldersgate Centre, 309 Durham Street,  
6pm to 7pm

## LPC Harbourwatch

Whakaraupō/Lyttelton Harbour is a treasured place, home to people and communities, natural habitats and taonga species.

Our relationship with the communities we are a part of is very important to us, and so is protecting Whakaraupō/Lyttelton Harbour.

As part of three major projects, the channel deepening, the construction of our cruise berth and Te Awaparahi Bay land reclamation, Harbourwatch was created in 2018 as a place to bring all our project updates and environmental monitoring data and publications into one place.

LPC is committed to maintaining Harbourwatch as a hub for our neighbours and the community to understand what is happening at the Port, ensuring harbour residents can easily access all the information we gather and stay up-to-date on our past and present projects and progress. For the latest information visit <https://www.lpc.co.nz/harbourwatch/>

## Christchurch City Council proposals in Plan Change 9 include:

9A. Non-residential activities in residential zones

Reinforcing that residential zones are mainly for living, while limiting unsuitable activities such as industrial land uses. Also managing the negative impacts of existing and proposed non-residential activities – such as health centres or retail outlets – so residents in the surrounding area continue to enjoy a high quality of living. Effects of these activities can vary and may include noise and traffic or parking issues.

9E. Port activities on Norwich Quay, Lyttelton  
Extending the ability for Lyttelton Port activities to continue on land zoned Commercial, on the south side of Norwich Quay, until 2036.

Please note there are other changes proposed in each of the topics above. More detail can be

found at <https://www.ccc.govt.nz/plan-change-9>

For more information about the Christchurch District Plan and changes to it, visit [ccc.govt.nz/districtplan](https://www.ccc.govt.nz/districtplan)

## Your feedback

We welcome your informal feedback, which will help us shape the draft proposed changes, before they go out for formal consultation in October 2021.

## School Holiday Free Movies

From 13 July Tuesdays & Thursdays, 10.30am at Opawa Community Church, cnr Aynsley Tce & Opawa Rd.

Seats will be available but kids may want to bring their own rug or bean-bag. Drinks, popcorn and nibbles available for sale.

### Tuesday 13 July

Cloudy with a chance of Meatballs (G)

### Thursday 15 July

Narnia: The Lion, the Witch and the Wardrobe (PG)

### Friday 16th July 1pm

Miss Potter (G) - a movie more suitable for adults

### Friday 16th July 7pm

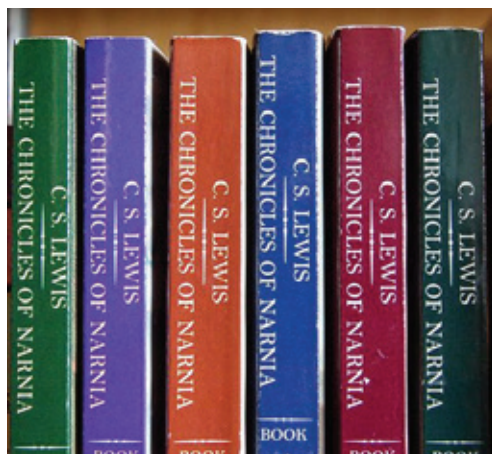
Scooter Kidz (PG)

### Tuesday 20 July

Winnie the Pooh (G)

### Thursday 22 July

Mary Poppins (G)



## The Online Experiment: July Cohort

Are you ready to experiment with us? Are you between 14 to 18 years old?

Ready to accelerate your personal potential, connect with other awesome humans, and create change in your community? You are the changemakers to shape the future of Aotearoa and our workplaces.

Applications are now open! Click the link to register <https://www.thesocialexperiment.co/the-online-experiment-2021>

## User Pays based on bin size?

Some Christchurch residents are going to be surveyed to understand their kerbside service requirements and whether they'd be interested in a user-pays charging system based on the

size of their bins. The kerbside survey is part of the wider Life in Christchurch survey, going out to 16,000 residents.

## Wanted: Part Time Customer Service Representative – Akaroa Service Hub

We acknowledge there's no "one size fits all" for this Customer Services Representative role, however, it's essential that you have come from a background in customer services. Your direct, professional interactions with customers and your genuine passion and commitment to the customer experience will be welcomed here. To view the full position description, and to apply, visit <https://www.cccjobs.co.nz/jobdetails/ajid/X1cF8/Customer-Service-Representative,23525.html>

Applications Close 7 July 2021

**TIM BATT**  
**CLASSY WARFARE**

**LYTTELTON**  
THU 8 JULY, 8.30PM  
WUNDERBAR

**CHRISTCHURCH**  
FRI 9 JULY, 8.30PM  
GOOD TIMES

**DUNEDIN**  
SAT 10 JULY, 10PM  
NEW ATHENAEUM  
THEATRE

**2GRAVES**  
15 JULY-7 AUGUST

Handgun icon, Darts icon, Horse icon



# STARS IN THEIR EYES

ATTENTION

JULY 17TH

100NS



## Weekly Events

### Eruption Brewing

Sunday Session 3-6pm

### Lyttelton Arms Happy Hour

Every day 5-7pm

### Lyttelton Top Club

Wednesday Housie 7pm

Thursday 5-6 pm 7-8pm

Friday Happy Hour 4-6pm

Saturday Happy Hour 6-7pm

### Markets every Saturday - Rain or Shine

### Lyttelton Craft and Treasure Market

Collets Corner 9-1pm

Lyttelton Farmers Market 10-1pm

### Lyttelton Farmers Market

10-1pm. Every Saturday rain or shine.  
farmersmarket@lyttelton.net.nz

### Lyttelton's Retro Art and Craft Bazaar 9-1pm

### The Loons

Wednesday Al Park and Friends 8pm

### Wunderbar

Tuesday Open Mic Showcase Night 7pm

Wednesday Jam Night 8pm

## Single Events

### Tuesday July 6th

The Loons Lucky for Some

A Play by Popi Newbery The Loons 8pm

### Wednesday July 7th

Lyttelton Library Stories After Dark

The Loons Lucky for Some

A Play by Popi Newbery The Loons 8pm

### Thursday July 8th

The Loons Lucky for Some

A Play by Popi Newbery The Loons 8pm

Wunderbar Tim Batt's Classy Warfare

### Friday July 9th

The Loons Lucky for Some

A Play by Popi Newbery The Loons 8pm

Wunderbar Eighties Forever: A 1980s Dance Party

### Saturday July 10th

Matariki Fireworks

The Loons ONONO - Album release show

### Wednesday July 14th

Tiny Ruins The Loons

### Thursday July 15th

Lyttelton Arts Factory 2Graves 7.30pm

### Friday July 16th

Lyttelton Arts Factory 2Graves 7.30pm

### Saturday July 17th

Lyttelton Arts Factory 2Graves 7.30pm

The Loons Stars In Their Eyes

Hosted by Keith Preece

### Sunday July 18th

Lyttelton Arts Factory 2Graves 6pm

Naval Point Club AGM

## Coming Up

**July 10 -25** Kidsfest, visit [kidsfest.co.nz](http://kidsfest.co.nz)

**July 26** Ladi6 The Loons

**July 29** The Loons Aperture -

the Life and Work of Ans Westra

Wunderbar Comedy Night

## Galleries

**Stoddart Cottage Gallery** is located at historic Stoddart Cottage, Diamond Harbour, birthplace of well-known Canterbury impressionist painter Margaret Stoddart (1865 -1934). It is just a short walk up from the Diamond Harbour ferry.

**July Exhibition:** Artists Against Slavery presents, Zoomers; an exhibition of work by four talented Generation Z artists, who all live in Diamond Harbour and are students at Cashmere High School. They will be donating 10% of the sale price of their artworks sold to Artists Against Slavery. 2-30 July

Open 10-4pm Friday, Saturday Sunday and public holidays.

## Matariki Events

### Tirama Mai Friday

**25 June – Saturday**

**10 July 6pm–11pm**

Central City and New

Brighton Tirama

Mai is bringing the

light to Ōtautahi-

Christchurch this winter. Christchurch's central city and New Brighton will be transformed with a series of innovative lighting installations, projections and illuminated artworks created by some of Canterbury's best lighting artists.

### Matariki Fireworks Spectacular July 10th

Enjoy local kai at New Brighton Mall from 6pm.

Nek minit, bowl round to the Pier and watch

Ōtautahi-Christchurch skies light up between 7pm to 7.30pm.

### The Arts Centre

A full programme of Matariki Events July

5-18th <https://artscentre.org.nz/whats-on/matariki-2021/>





*Pahlen Presents*  
**LUCKY FOR SOME**  
**2021**



*A play by Popi Newberry*

5<sup>TH</sup> - 9<sup>TH</sup> JULY  
THE LOONS 16 CANTERBURY ST  
DOORS OPEN 7.30, 8 PM START

TICKETS AT [WWW.EVENTFINDA.CO.NZ/2021/LUCKY-FOR-SOME/LYTTELTON](http://WWW.EVENTFINDA.CO.NZ/2021/LUCKY-FOR-SOME/LYTTELTON)

## **COMMUNITY ACTIVITIES IN AND AROUND THE HARBOUR**

### **MONDAY**

#### **Community Choir**

7.30pm Winchester St Lyttelton.  
All welcome. Jillie 021 152 8068

#### **Lyttelton Reserves Management Committee**

Next Meeting Monday July 26<sup>th</sup> 7-9pm Lyttelton  
Community Boardroom 25 Canterbury St.  
All welcome

#### **Lyttelton Rotary Club**

7pm on the 2nd and 4<sup>th</sup> Monday of each month  
Lyttelton St John's station London St. New  
members welcome. Contact Neil Struthers  
Ph. 0274336872 for details.

#### **Lyttelton mother4mother**

Breastfeeding support group.  
10-12pm For more information contact  
Andrea Solzer andrea.solzer@web.de

#### **Lyttelton Scouts**

6.00 - 7.30pm  
Contact Ruth Targus 021 259 3086

#### **Open Adult Ballet**

11:00am to 12:00pm. Lyttelton Rec Centre

### **TUESDAY**

#### **Community House**

Shared Lunch 12.00pm 7 Dublin Street.  
Make new friends

#### **Harbouryoga**

6pm 105 Bridle Path Road

#### **LIFT Library**

10.00-1pm Foyer Rec Centre 25 Winchester St

#### **Lyttelton Library Story Times**

11.00-11.30am

#### **Diamond Harbour Bridge Club**

Social Play restarting for 2021 from 19<sup>th</sup> January  
on Tuesdays at 1.30pm in the Committee Room,  
Diamond Harbour Community Centre, Waipapa  
Ave, Diamond Harbour. No partner required, table  
money \$4.00 includes afternoon tea. Visitors very  
welcome. Contact Pauline Croft. Ph 329 4414 or  
027 363 6302.

#### **Lyttelton St John Youth Division**

youth@stjohn.org.nz. St John Ambulance Station  
52 London St, Lyttelton

### **WEDNESDAY**

#### **Diamond Harbour Bridge Club**

Restarting for 2021 from 13<sup>th</sup> January on  
Wednesdays from 6.40pm - 10pm at the Diamond  
Harbour Bowling Club, off Purau Ave, Diamond  
Harbour. Table money \$5.00 includes supper.  
Visitors very welcome.

Enquiries or to find a partner contact Pauline Croft  
Ph 329 4414 or 027 363 6302.ww

#### **Diamond Harbour Singers**

7.30 - 9.00pm. Every Wednesday in Stage Room of  
Community Hall. All welcome. Margie 329 3331

#### **Lyttelton Community Garden**

10am Every Wednesday. Meet at the garden  
behind the Lyttelton Pool in Oxford Street.  
For more information 328 9243

#### **Lyttelton Cubs**

6.00 - 7.30pm Contact Ruth Targus 021 259 3086

#### **Lyttelton Garage Sale**

10-4pm 54a Oxford Street, Lyttelton  
Second Hand Bargains and more.

#### **Lyttelton Harbour Fruit and Vegetable Collective**

Trading between 12.30 to 4pm.  
Add \$7.50 and @\$15 bags of vegies.  
Pay online a week in advance  
The Lyttelton Recreation Centre, 25 Winchester, St  
Lyttelton. Contact Wendy Everingham 0210476144

#### **Lyttelton Library Wednesdays Knit and Yarn**

10.00-12.00pm

#### **Lyttelton Playgroup**

At Kidsfirst Lyttelton  
12.30pm- 2.30pm 33 Winchester St Lyttelton  
Call 03 328 8689 for more information

#### **Library of Tools and Things**

5-7pm 25 Canterbury St (in garage)  
Contact LytteltonLoTTs@gmail.com

#### **Stoddart Cottage Artisans group**

Meets monthly on the third Wednesday 4pm at  
Stoddart Cottage. For more information contact  
secretary Christine Davey kcjoynt@xtra.co.nz. See  
also our Facebook page.

#### **Tai Chi**

1.30 2.30 Lyttelton Recreation Centre  
Bookings via WEA

### **THURSDAY**

#### **Diamond Harbour Tai Chi Group**

11am start Diamond Harbour Community Hall.  
For more details, please email to 88daruma@gmail.  
com and we will send you our information letter.

#### **Governors Bay Volunteer Fire Brigade**

7.00pm Governors Bay Fire Station  
Weekly Training, New Members Welcome

#### **Harbouryoga**

6pm 105 Bridle Path Road

#### **LIFT Library**

10.00-1pm Foyer Rec Centre 25 Winchester St

#### **Lyttel Tumblers**

9.30-11am Lyttelton Recreation Centre



### **Introduction Course to Ballet for Adults**

6:00pm to 7:00pm. Lyttelton Rec Centre

### **Lyttelton Garage Sale**

10-4pm 54a Oxford Street, Lyttelton  
Second Hand Bargains and more.

### **Lyttelton Volunteer Fire Brigade**

7:00pm Lyttelton Fire Station  
Weekly Training, New Members Welcome

### **Lyttelton Strollers**

10am start at the Lyttelton Library, London  
Street Lyttelton. For more information contact  
Community House. Ph 741 1427

## **FRIDAY**

### **LIFT Library**

10:00-1pm Foyer Rec Centre 25 Winchester St

### **Dance Fitness**

Lyttelton Recreation Centre 25 Winchester St.  
10.30am

### **Harbouryoga**

9.30am 105 Bridle Path Road

### **Lyttelton Garage Sale**

10-4pm 54a Oxford Street, Lyttelton  
Second Hand Bargains and more. .

### **Lyttelton Library Fridays Babytimes**

10.30-11.00am

### **Lyttelton Yoga**

9.30am - 10.45am. 25 Winchester St Lyttelton Rec  
Centre. Contact Rebecca Boot 021 071 0336

## **SATURDAY**

### **Library of Tools and Things**

10-1pm 25 Canterbury St (in garage)  
Contact LytteltonLoTTs@gmail.com

### **LIFT Library**

10:00-1pm Foyer Rec Centre 25 Winchester St

### **Harbouryoga**

9.00am Trinity Hall Lyttelton Rec Centre

## **SUNDAY**

### **St Saviour's at Holy Trinity**

17 Winchester Street. 9.30am Service with Holy  
Communion. All Welcome

---

## **GROUPS**

### **Banks Peninsula Community Board**

10am First and Third Monday of each Month  
Meetings Open to the Public

### **Banks Peninsula Water Zone Committee**

4pm usually 3rd Tuesday each month at different  
locations around the peninsula. Meetings open  
to the public. If your community has a specific  
waterway issue you'd like to discuss, get in touch  
and we may be able to have a meeting in your  
neighbourhood. fb.com/canterburywater

### **Bay Harbour Toastmasters**

6.30pm. Every 2nd and 4<sup>th</sup> Wednesday of the month  
Lyttelton Community Board Room, 25 Canterbury St  
Contact: Jann Meehan, 021 263 1040

### **Civil Defence Welfare Response Team for the Harbour Basin**

Diamond Harbour: Jill Pattinson 021 062 3112  
Governors Bay: Jan Millar 027 208 7310

### **Lyttelton Harbour Business Association**

For more information contact: admin@lhba.co.nz

### **Lyttelton Museum Historical Society**

info@lytteltonmuseum.co.nz

### **Lyttelton Netball Club**

Lytteltonnetball@gmail.com

### **Lyttelton Rugby Club**

For details visit the club Facebook Page  
or contact Linda Preddy  
accounts@marinetec.co.nz  
027 3859392

### **Little Ship Club Canterbury**

We meet on the 3rd Thursday of the month  
usually at Naval Point Club Lyttelton from  
7.00pm. The club has regular guest speakers and  
undertakes a large range of activities that increase  
the knowledge and skills and enjoyment of its  
members and for the benefit of yachting generally.  
All welcome  
www.littleshipclubcanterbury.wordpress.com

### **Lyttelton Time Bank**

Drop In Lyttelton Library every Tuesday 10-12pm  
328 9243 www.lyttelton.net.nz

### **Lyttelton Toy Library**

Runs every second Saturday out of the Lyttelton  
Recreation Centre Gym between 10am - 12pm.  
Low annual membership with no lending fees.  
Toys for 0 -5 y/o. Details available via <https://www.facebook.com/lytteltontoylibrary/>

### **Naval Point Old Salts Lunch**

The Old Salts Lunch is being held every second  
Friday bimonthly.  
Contact Richard Madderson  
03 328 7029 manager@navalpoint.co.nz

### **Narcotics Anonymous Lyttelton Meeting**

Monday 6:30 pm - 7:30 pm  
The Lyttelton Community House  
7 Dublin Street Lyttelton, Christchurch

Thursday 6:30 pm - 7:30 pm  
Lyttelton Community Board Room  
25 Canterbury Street, Christchurch

# thelyttelldirectory

2021 Support local businesses around the harbour

## LOCAL EXPORTS

<b>All good</b> Interiors and stuff	0274755163 Contact: Polly Twist	pollytwist@allgoodstuff.co.nz www.allgoodstuff.co.nz
<b>Andrea Dahl Wedding Celebrant</b>	0274319963 Contact: Andrea Dahl	andrea@manaakimai.co.nz www.manaakimai.co.nz
<b>Ausmic Electrical</b> 9 Governors Bay Rd, Cass Bay, Lyttelton 8082	021 156 3436 Contact: Mick Bennett	Mick@Ausmicelectrical.co.nz www.facebook.com/Ausmicelectrical/
<b>Blue Fusion</b> Web Design	021 027 05450 Contact: Dana Dopleach	dana@bluefusion.co.nz www.bluefusion.co.nz
<b>Building on Basics</b> Financial Advice and Planning	0299737911 Elise Vine	elise@bob.kiwi.nz www.buildingonbasics.co.nz
<b>CWEA</b> Canterbury Workers' Educational Association 59 Gloucester Street	03 366 0285	admin@cwea.org.nz www.CWEA.ORG.NZ
<b>Harbour Co-op</b> 12 London Street Lyttelton	03 328 8544	shop@harbourcoop.co.nz
<b>Ray White Next Step</b>	020 4172 1510 Contact: Yvette Wright	yvette.wright@raywhite.com www.rwferrymead.co.nz
<b>LUMEN Engineering Design</b> 210 Hazeldean Road, Sydenham	03 377 1546 Contact: Dan Tombleson	hello@lumen.net www.lumen.net
<b>Lyttelton Port Company</b> Waterfront House, 37-39 Gladstone Quay, Lyttelton 8082	03 328 8198	allreceptionists@lpc.co.nz www.lpc.co.nz
<b>Lyttelsoft</b> For all your accounting needs 7 Hyllton Heights, Lyttelton 8082	03 328 8671 or 021 137 4103 Contact: Penny Mercer	penny@lyttelsoft.co.nz www.lyttelsoft.co.nz
<b>Min Sarginson Real Estate</b> 53 London Street, Lyttelton	03 3287273 Agents: Steve Hanrahan	lyttelton@min.nz www.min.nz
<b>Printable Solutions</b> 92 Division Street, Riccarton	03 377 6644 Contact: Ange Hodgson	operations@printable.co.nz www.printable.global
<b>Project Lyttelton</b> Lyttelton Farmers Market	033289243	www.lyttelton.net.nz farmersmarket@lyttelton.net.nz
<b>Thea Mickell Services</b> 7 Dublin Street, Lyttelton	03 328 8849 Contact: Thea Mickell	admin@theamickellservices.co.nz www.communityfunding.co.nz

To become a member of the Lyttelton Harbour Information Centre  
please contact Our office manager 328 9093 or email office@lytteltoninfocentre.nz.

# thelytteldirectory

2021 Support local businesses around the harbour

## EAT, DRINK, DINE

<b>Coffee Culture</b> 18 London Street, Lyttelton 8082	033 287 080 Contact: Leona & Marten Cooper	Talk@Coffeeculture.co.nz www.coffeeculture.co.nz
<b>Diamond Harbour Eatery and Bar</b> 21 Waipapa Avenue, Diamond Harbour	03 3294465 Contact: Katik	diamondharbour10@gmail.com
<b>Fishermans Wharf</b> 39 Norwhich Quay, Lyttelton 8082	033 287 530 Contact: Pj Gemmel	Contact@Fishermanswharf.nz www.fishermanswharf.nz
<b>Ōtoromiro Hotel</b> 52 Main Road, Lyttelton 8971	03 3299433 or 0275 329160 Contact: Jeremy Dyer	info@governorsbayhotel.co.nz www.governorsbayhotel.co.nz
<b>Lyttelton Arms</b> 17A London Street, Lyttelton 8082	03 328 8085 Contact: Caroline & John Quinn	caroline@lytteltonarms.co.nz www.thelytteltonarms.co.nz
<b>Top Club</b> 23 Dublin street, Lyttelton 8082	03 328 8740	lytteltontopclub@gmail.com www.facebook.com/lytteltontopclub/
<b>Wunderbar</b> 19 London Street, Lyttelton 8082	03 328 8818 Contact: Alex and Vanessa	hi@wunderbar.co.nz https://wunderbar.co.nz

## HEALTH & BEAUTY

<b>Blue Cottage</b> FB	328 8155 Contact: Janette Kennedy	
<b>Lyttel Beauty</b> 32 Voelas Road, Lyttelton	0212973885 Contact: Emma Chambers	Lyttelbeauty@Hotmail.co.nz
<b>Health Check Clinic Rapaki</b>	03 3289415 Contact: Christina Henderson	rapaki@extra.co.nz
<b>Moving Back to Balance</b> Gentle holistic bodywork	027 368 6515 Contact: Janet Taylor	taylor-smyth@slingshot.co.nz
<b>Lyttelton Recreation Centre</b> FB	0211116069 Contact: Nathan Mauger	reccentremanager@lyttelton.net.nz
<b>Oceanside Jui Jitsui</b> 56 Leeds Street, Phillipstown, moving to Ferrymead	027 826 6804	https://osjj.nz Contact: Hayden Smith
<b>Personal Trainer &amp; Consultant</b> www.workplacedevelopmentconsultants.com	0211992582 Contact: Kevin Hurl	workplacedevcon@gmail.com

\$99 a year enables your business to be listed in this directory,  
be on the website and have business information displayed at the Information Centre.

# the lyttelton directory

2021 Support local businesses around the harbour

## THINGS TO DO

<b>Adventure by nature</b> Outdoor Education Providers	210721464 Sarah English	sarah@adventurebynature.co.nz www.adventurebynature.co.nz
<b>Akaroa Kayaks and Electric Bikes</b>	211564591 Allie and Greville Walsh	contact@akaroakayaks.com www.akaroakayaks.com
<b>Airborn paddling</b> Inflatable SUP and kayak hire	022 0318420 Contact: Joe Jagusch	info@airbornpaddling.nz www.airbornpaddling.nz
<b>Black Cat Cruises</b> Level 2, 5 Norwich Quay, Lyttelton 8082	0800 436 574 Paul Milligan	sales@blackcat.co.nz www.blackcat.co.nz
<b>Bosman Ballet Flow</b> Trinity Hall Lyttelton Rec Centre	027 316 3631 Contact: Celia Bosman	celia@bosman.nz www.bosman.nz
<b>Canterbury leisure tours</b>	03 3840999 Kevin Eldin	info@leisuretours.co.nz reservations 0800484
<b>Christchurch Attractions</b>	03 366 7830	caryn@christchurchattractions.nz www.christchurchattractions.nz
<b>Hassel - Free Tours</b> 296 Prestons Road, Marshlands, Christchurch	03 385 5775 Contact: Raina Roberts	bookings@hasslefree.co.nz www.hasslefree.co.nz
<b>Jet Junkies</b> Erskine Point Marine Drive Lyttelton	022 153 0780 Contact: Kevin	kevin@jetjunkies.co.nz http://jetjunkies.co.nz/
<b>Ohinetahi House &amp; Gardens</b> 31 Governors Bay Teddington Road	3299 852 Contact: Ross Booker	info@ohinetahi.co.nz www.ohinetahi.co.nz
<b>Stoddart Cottage Gallery</b> <b>Diamond Harbour</b>	021 776161	info@stoddartcottage.nz

## PLACES TO STAY

<b>Dockside Accommodation</b> 22 Sumner Road, Lyttelton 8082	021 152 3083 Contact: Julian Cross	dockside@fastmail.com www.lytteltonaccommodation.co.nz
<b>Governors Bay B&amp;B</b> 851 Governors Bay Road, Lyttelton 8082	329 9727 Contact: Eva Mason	eva@gbbedandbreakfast.co.nz www.gbbedandbreakfast.co.nz
<b>Ōtoromiro Hotel</b> 52 Main Road, Lyttelton 8971	03 3299433 or 0275 329160 Contact: Jeremy Dyer	info@governorsbayhotel.co.nz www.governorsbayhotel.co.nz
<b>Manaaki Mai</b> 99, Purau Port Levy Road, Purau	0274319963 Contact: Andrea Dahl	andrea@manaakimai.co.nz www.manaakimai.co.nz
<b>The Rookery</b> 9 Ross Terrace, Lyttelton 8082	03 328 8038 Contact: Rene Macpherson	rene@amma.co.nz www.therookery.co.nz



# Stories after dark

Come and join us for stories, songs and crafts to entertain 4-7 year olds. The whole family is welcome – kids, bring your PJs and teddies!

6.30–7.30pm, Wednesday 7 July, Lyttelton Library

Free, no bookings required

[christchurchcitylibraries.com](http://christchurchcitylibraries.com)





# Community Planting Urumau Reserve 2021

July 18 10-12pm

Tools and plants provided. Please bring gloves.  
Meet at the far end of Foster Terrace at 10am.

Soup, cuppa and cake afterwards. If wet  
postponed.

Let us know if you can make it.

TXT 021 0476144

[lrncommittee@gmail.com](mailto:lrncommittee@gmail.com)



# The Creative Cottage

## Workshops at Stoddart Cottage

### **Matariki Lantern Making**

Sunday 4th July, 1-4pm, \$5

Lantern making with recycled and decorative materials

All ages

### **Under the Sea - Children's Clay Workshop**

Thursday 15th July, 10am - 12pm, \$15+bf

Introduction to clay through creating sea creatures

(ages 5-10)

### **Natural Dyes for Every Home and Artist**

Sunday 18 July 3-4pm, Koha

Natural dye taster talk with Arina Terekhova

### **The Temple of Flora - Botanical Assemblage**

Saturday 31st July - 1.30-4pm, \$45+bf

Create a plant-based artwork with Botanic Artist

Sarah Amazinna

### **Exploring Eco-Dyes**

Sunday 1 August, 1-5pm, \$45+bf

Natural dye and ink making with foraged plants

### **Craft a Clay Cup**

Saturday 14th August, 1-3pm, \$25+bf

Craft a pottery cup using clay slab technique

### **Felting Flowers**

Sunday 29th August, 1.30-3pm, \$20+bf

Learn felting skills through felting a flower

**Get creative over the winter months - No previous experience required!**

Further details & how to book at [www.stoddartcottage.nz/events](http://www.stoddartcottage.nz/events)

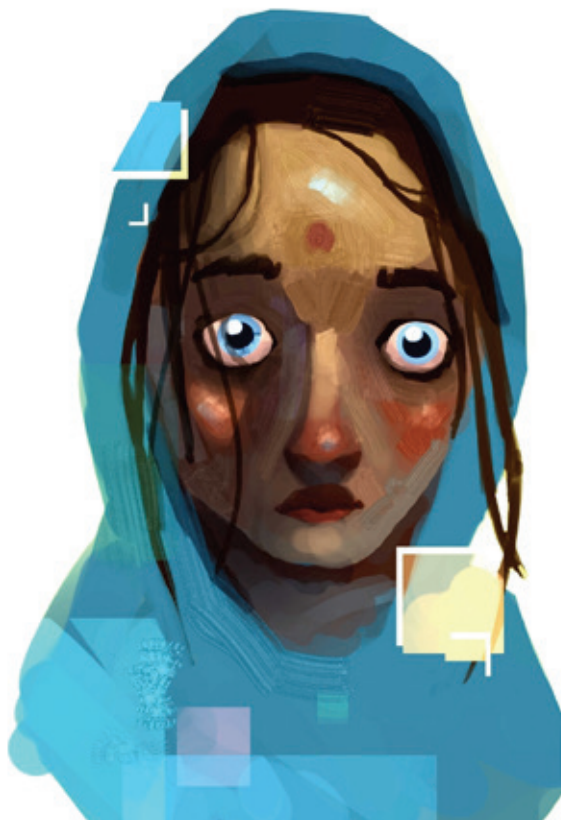
[info@stoddartcottage.nz](mailto:info@stoddartcottage.nz)



Christchurch City  
**creative**nz  
 COMMUNITIES



# Zoomers



**Breana Vosper - Bronte Lovell  
- Hinnie Hobeyn - Joel Graham**

2 – 30 July 2021

---

**Stoddart Cottage Gallery  
Diamond Harbour**

In support of Artists Against Slavery

Opening Event 5 - 7pm on Friday 2 July. All welcome.

