

LYTTELTON REVIEW

November 2018 • Issue: 223

PURAU • DIAMOND HARBOUR • CHURCH BAY • CHARTERIS BAY • GOVERNORS BAY • RAPAKI • CASS BAY • CORSAIR BAY • LYTTELTON

IN THIS EDITION:

- Banks Peninsula parks
- Rotten Radio
- Lyttelton Primary School

Next Issue print date: Issue 224, 11th Decemehr 2018.
Content Deadline: 5pm 7th Decemehr 2018.

Review Creators

Lyttelton Harbour Review is a 100% voluntary community newsletter initiative developed after the February 2011 earthquake. It's a Lyttelton Harbour Information Centre initiative produced by former Chairperson Wendy Everingham and Committee Member Jenny-Lee Love.

The objective of the Lyttelton Harbour Review is to help keep local residents informed with what is going on in the wider Lyttelton Harbour community. Of course the success of the Lyttelton Harbour Review could not be possible without the ongoing support and enthusiasm from the wider community.

A big thank you goes out to everyone who sends information; is willing to be interviewed or lets us know what might be happening in the neighbourhood. The Lyttelton Harbour Review project would not be possible without you all.

If you have an event, topic, sport announcement, fundraiser or cause that you would like to share with the harbour community, then Wendy or Jenny-Lee would love to hear from you:

Wendy Everingham
 Mobile: 021 047 6144
 Email: review@lytteltoninfocentre.nz
 Content Deadline: 5pm Friday

Jenny-Lee Love
 Email: review@lytteltoninfocentre.nz
 Content Deadline: 5pm Friday

Lyttelton Information Centre
 Office: 328 9093
 Email: office@lytteltoninfocentre.nz

Subscribe to the Review:
 Email either Wendy or Jenny-Lee with the words "Subscribe Me" in the subject line and the Lyttelton Harbour Review will be delivered to your inbox.

In 2018 the Lyttelton Harbour Review is produced fortnightly. Any important information between times will be emailed as a Lyttel Broadcast if necessary.

Hard Copies of the Review are available at:

The Lyttelton Arms
 Lyttelton Bakery
 Leslies Bookshop
 Lyttelton Community House
 Lyttelton Harbour Information Centre
 Lyttelton Health Centre
 Lyttelton Library
 Lyttelton Top Club

Back Copies Available to Download:
www.lytteltonharbour.info

Lyttelton's Community Emergency Response Approach Supported

It is pleasing to report that after all these years Lyttelton's decision not to have a formal fully trained Civil Defence Team has been validated by our local Civil Defence unit. Locals like myself were getting pretty tired of attending Welfare Centre training. It was all very mechanical, boring and rules based. Instead a group of us broke away from that system opting for a community response. Our main focus has been relationship building and dissemination of community information. That's basically why the Lyttelton Review began all those years ago! When you know the wider community you know who to ask for various things. You can mobilise quite quickly. This community proved that in 2010, 2011 and 2012. For our small emergency response team it's meant we have just caught up for dinner several times a year. Much more fun!

The last time this community needed a community response to an emergency event was the flood of 2012. Community House, Lyttelton Information Centre and the CCC local service centre sprang into action to help flooded households and evacuated people from the oil leak at the tank farm. This worked well.

Fast forward to 2018 the scene has changed even further. The Recreation Centre is now back and functioning and the Timebank, Council Governance team and many other community groups are located within this building. This site will be the focal point into the future if a wider community response is needed for an emergency.

Back in 2015 this community put together a detailed Community Emergency Response Plan. Next year that will be updated to reflect the new operating conditions.

In the event of a local declared emergency **Lyttelton will not** have a dedicated fully trained Civil Defence team like we did have in 2011. We will just have ourselves. If we need extra help there are going to be professional roving fully trained Civil Defence teams similar to Search and Rescue who can come in and provide coordination where needed.

In order for our Lyttelton area community response to work well here are some tips to help this along. We are all in this together.

The most important things you can do are:

- Know your neighbours. They might have things you can share in an emergency. For example a gas stoves to cook on or a log burner for warmth.

- Keep supplies for a three day period. Extra cans of food and dry goods are really useful. Don't forget the pets as well!
- Know where the torches are.
- Have some buckets and plastic bags in the shed that can make portable toilets.
- Have a couple of dust masks and gloves.
- Have stored water. You need three litres of water per day per person in the household
- Have a plan to meet/contact family members if you aren't all based in Lyttelton
- Have an authorised local person to collect the kids if you can't get back
- Have a get-a-way-bag with a torch, hand sanitiser, toilet rolls, money, some clothes, medicine, radio, snacks, first aid kit and important documents handy
- Make sure your mobile phones are charged fully each day. When networks are congested text or messaging works best
- See if your phone is suitable for Emergency Messages from authorities
- Be connected to social media. Lyttelton has a couple of Face Book pages that information can be shared on: Lyttelton, Lyttelton Ain't No Place I'd Rather Be and Lyttelton Timebank
- Know the local radio stations and have a battery operated radio
- Join community organisations, make connections. It's a good way to get to know people. The more connected you are the easier your experience will be. See the community groups section in the back of the Lyttelton Review.
- If you have elderly neighbours keep an extra eye on them
- To be even more prepared you might think of having your own water tank and generator
- If you need extra support the community has the ability to open the Lyttelton Recreation Centre as a community hub. At this facility we have the ability for people to meet, request help, have a cup of tea etc. This facility would be opened by members of the Timebank supported by other community organisations and local CCC staff. The Timebank is based at the Recreation Centre at 25 Winchester Street.

If you have new neighbours and you would like an excuse to say hello we have a supply of Neighbourhood Connector Cards where you can swap contact details. Either pop into the Recreation Centre front desk between 10-4pm weekly or 10-2pm on Saturday to collect one or give the Timebank team a call 328 9243 or email Timebank@lyttelton.net.nz

Article Lyttelton Timebank

Note: If you would like to be a fully trained Civil Defence responder, a team meets at Diamond Harbour monthly. A couple of people do attend from Lyttelton. A fully trained responder is on call for any event in any location. They are not place based. Contact Wendy Coles 0211541434



Neighbourhood Connector Cards

Public point of view on Banks Peninsula parks

Two picturesque parks on Banks Peninsula are in the spotlight as the Christchurch City Council seeks public feedback on draft management plans for Misty Peaks Reserve and Te Oka Reserve.

The two-month consultation period for both draft plans closes on 18th December 2018. Council Head of Parks Andrew Rutledge says targeted management will ensure both areas are protected for the future.

"It is important to preserve the character and special features of these spaces and insure that they are accessible for everyone," Mr Rutledge says.

Looking from the summit ridge in Misty Peaks Reserve towards Akaroa Harbour.

"We need community input to help us best develop plans to manage these parks, and recognise that a sense of involvement can greatly contribute to the protection of these parks."

Misty Peaks Reserve is on the route to the Akaroa Heads lighthouse reserve, Flea Bay marine reserve and Banks Peninsula's largest penguin colony. It has an access route that follows the crest of Akaroa's ancient volcanic rim. The 500-hectare park is home to a range of native birds, lizards and fish, along with several rare or threatened plants. Habitats range from lowland podocarp forest and beech remnants to sub-alpine snow tussock and unique rocky outcrop flora.

Te Oka Reserve is a 900-hectare "sea to summit" park, with rock formations and access to a waterfall in Tumbledown Valley.

The scenic ridgeline track winds down to sheltered beaches in Tumbledown Bay and Te Oka Bay.

People can make submissions on the draft **Misty Peaks**) and **Te Oka** plans via "Have your say" on the Council website.

Council staff will also host drop-in sessions on Tuesday, 6th November from 4pm to 6pm at the Service Centre in Little River and on Saturday, 24th November from 10am to noon at the Farmers Market at 48 Rue Lavaud in Akaroa.

A hearings panel will hear submissions in March next year before a recommendation on the proposed final plan goes to the Banks Peninsula Community Board for consideration in May.

Article Banks Peninsula Community Board Newsletter





Lyttelton's local radio station is powering on. Started five years ago it's well and truly nestled into The Loons down on Canterbury Street. Founder Scottie Farmer is really stoked how things just keep ticking on. "We got going after the quakes as a hangout away from home", he said. Obviously the appeal of a hangout away from home is still popular. The station boasts a host of DJ's and this self-organised team just keep pumping out their favourite tunes from the back of the Loons.

Everyone at Rotten Radio is there because they love hanging out there. It's a space fully organised by the DJ's". Ages range from Primary School children to seniors" said Scottie. "We have an open door policy. Currently we only have a couple of female DJ's, the majority of the DJ's are guys who love music".

"I am really proud how we have pulled Rotten Radio together from nothing. All of our equipment has been fundraised or donated. We like to keep things pretty simple. The more money you have the more you have to spend so we shy away from that and just get by with what we really need". The wider community has helped them get to where they want to be. "I'd really like to thank a few people. The Loons for enabling us to have this broadcasting space, The Garage Sale for enabling us to use their space as a fundraiser, Lyttelton Supervalu for some generous donations and everyone else who has helped along the way".

Over the years, one thing that he's really proud of is the stations link to Lyttelton Primary. Students are encouraged to come up and make radio shows. "For me it's great to be able to share skills and it's

also terrific to keep up with the music trends of the younger generations". The station is a great space for all the generations to connect.

The station is open to anyone who lives in this community. Shows are not all about music. Currently there is someone who is an environmental researcher who broadcasts weekly. Scottie just loves the eclectic mix of things that get played. "There is such incredible music and range of tastes within our team".

At the five year mark there is a core handful of people who are still there from the stations beginning.

In the near future he hopes the station will be able to do more live to air shows when the Loons gets back up and running.

There are no plans to change the special formula that keeps the place ticking along. This is just a safe space with people who have a passion in broadcasting to gather. There isn't anything fancy, LP's, turntables and basic sound equipment.

Rotten Radio remains the regions last analogue station. "I view that as a draw card for Lyttelton. If you want to listen to the station you have to come through the hill. I think that's pretty special".

If you are keen to get involved or donate LP's Scottie Farmer is keen to hear from you. Call 021 02858083

"**ROTTEN RADIO** THE premiere low powered FM station out of Lyttelton, Aotearoa. Our ethos is strongly one of **DIY PUNK**. Terrestrial broadcasting on 107.7fm"

Article Lyttelton Review



Lyttelton Club Inc
23 Dublin Street, Lyttelton 8082
Tel: 03 328 8740
Email:
lytteltonclub@clear.net.nz

Over 60's Members Christmas Afternoon

Wednesday 12th December

A small charge of **\$15** is required to secure your spot, a fantastic Christmas dinner and a drink at the bar.

Come and enjoy our Christmas celebration
Happy Hour prices will be from **2pm – 5pm**

Please purchase tickets for this Christmas Afternoon from the bar at Lyttelton Club,
Limit to 60 tickets



News from the Top Club

GENERAL NEWS

In our last newsletter, I talked about having advertised the role of the newly created Club Manager position. I am pleased to say we have appointed Trudi Marshall to the position. She has learned her trade over many years at the Kaiapoi Club, and has spent the last 3 years as the Club Manager over at the Oxford Club. Trudi really impressed us all with her vision for the Top Club, and how she intends to really involve our members and the wider community in helping us become a fantastic venue for Lyttelton and the surrounding area.

She is due to officially start in mid-December, but we hope you have the chance to meet her before that as she comes over for the odd evening or weekend to say hello.

I really hope you all make Trudi welcome, and join us all in congratulating her for wanting to help the Top Club be successful for years to come.

More detail in the rebuild update below, but we are working incredibly hard towards moving into the main bar area. Trudi will be central to helping create a big official opening too, but we will more than likely be operating out of our new area well in advance of that.

Don't forget there are tickets available behind the bar for our annual 'over 60's Christmas lunch', so make sure you get in quickly before spaces run out.

Finally to thank you all for your patience over the last few months as we are working towards the final push for the new look Top Club. Without your support we couldn't do it, and we really hope to create something pretty special for the community.

Looking forward to seeing you all up at the Top Club now that summer has begun.

REBUILD UPDATE

Our vision for the rebuild was not just to improve the

decor and to create a really welcoming environment, it was also to secure the club's future.

Over the last 3 weeks, we have undertaken some significant plumbing upgrades. Upgrades that weren't necessarily part of our initial scope, but that we know are necessary to ensure we do the right thing to future proof the building. Because of this additional work, we have possibly put our progress back slightly, but we know we have made the right decisions here.

For those of you who have ever completed rebuild work (and I assume that's actually been most of you over recent years), you'll understand that changes to plans happen, and sometimes circumstances change which mean you need to make decisions which impact time frames. I can assure you that we have faced many such decisions recently, and all for the betterment of your club.

Lester and his team have been working incredibly hard to make sure we get things right for you, but know this has been at a cost to our timelines.

This next 3 or 4 weeks are crucial for us as we:

- Install the joinery to the brand new bar
- Install our custom made bar top
- Upgrade all toilet facilities
- Complete all necessary plumbing work
- Complete all Gib stopping and plastering
- Install our newly upholstered bench seats
- Upgrade all furniture
- Install carpets throughout Atrium area
- Design and plan out kitchenette
- Install new lighting design
- Complete all interior paintwork

You will hopefully see lots of activity in and around the club over this time, but now want to block off the main bar area from public view, so we can ensure the biggest impact when we finally open.

Our rebuild team are now committed to twice weekly planning and update sessions to ensure everything remains on track, and we can finally share with you all what we have been working so hard on throughout this year.

I thank you all again for your patience - We have had a small army of people working very hard on this project, and a bigger army of members who are keen to see the final version come to fruition - only by working together can we make sure we get the best possible results.

I hope you all agree - Exciting ain't it??

Article Top Club Steve Targus



LYTTELTON ROTARY PROJECT

CHRISTMAS COMMUNITY

CAROLS



Albion Square
Sunday December 23rd
7pm

Come along and join in the fun
If weather inclement this event
will be at the Lyttelton Fire
Station



Collett's Corner Design Workshop.

Co-Design the Rooftop Garden

Tuesday December 4 2018. 6 - 8pm

Lyttelton Boardrooms 25 Canterbury St.

Warren & Mahoney in association with in:flux will host a design workshop on December 4th at the Lyttelton Community Board rooms from 6-8pm. These Design workshops are lot's of fun, with VR glasses and interactive card games, to get you thinking how you would like to experience the rooftop garden at Colletts Corner.

The purpose of this design workshop is two-fold. First, the designers will walk the audience through the concept plans and share with us the new designs for the Public Courtyard, from the last workshop.

Second, they will facilitate a workshop to brainstorm ideas for the design of the Roof Top Garden. This is your opportunity to share your ideas for which activities you would like to see supported through the design.

This meeting is also for people who dream of owning their own business in Lyttelton, it is a good time to attend and ask questions about the building. The design is at the stage where prospective tenants can have an input on the plans and shape the building to meet their business needs.

The building will have a restaurant, hot baths, shops, a coworking space, apart-hotel, cinema and bar. If you would like to run one of these businesses please come and if you can't make it to the meeting please get in touch, we would like to meet with you.

info@ohu.nz

Boaties urged to communicate on the water

Boaties will head to the water in droves this weekend and Environment Canterbury navigation safety officer Gary Manch wants a focus placed on communication.

Show Weekend is traditionally when Canterbury boaties head back to the water given the weather has improved during spring.

The long weekend represents the start of a busy period on Canterbury waterways and Manch said having two waterproof forms of communication was a must for any boatie.

"We want people to have the right type of communication for the area they're in," Manch said.

"This is an important part of remaining safe on the water and we want to remind people that: 'If you can't be heard, you can't be helped'."

It could be as simple as having a whistle onboard, to complement another device, if it meant you would be able to signal for help in a sticky situation.

Other popular communication options include cellphones, VHF radios, flares, and personal locator beacons (PLBs).

SAFETY FIRST

Safer Boating Week took place around the country last month and Manch said the start to the boating season had been a positive one.

"It's great to see so many boaties in the area taking safety seriously."

Having correctly-fitted lifejackets for everyone onboard also remained a priority, Manch said.

Boaties can find more information about communication, lifejackets and boat identification visit <https://ecan.govt.nz/do-it-online/harbourmasters-office/recreational-boating/>

Article ECAN Harbourmaster





Lyttelton Primary School is Setting Traps!

This is a Lyttelton School project in collaboration with Whaka Ora Healthy Harbour Group, Lyttelton Reserves Management Committee, Lyttelton Port of Christchurch, Enviroschools, Christchurch City Council and the Banks Peninsula Conservation Trust.

Urumau Reserve and the Port Saddle are 43 ha of land on the eastern side of Lyttelton. They are key recreational areas for the community and act as outdoor learning

spaces for Lyttelton Primary School. They are areas of importance for native plant regeneration, habitat for native bird and reptile species.

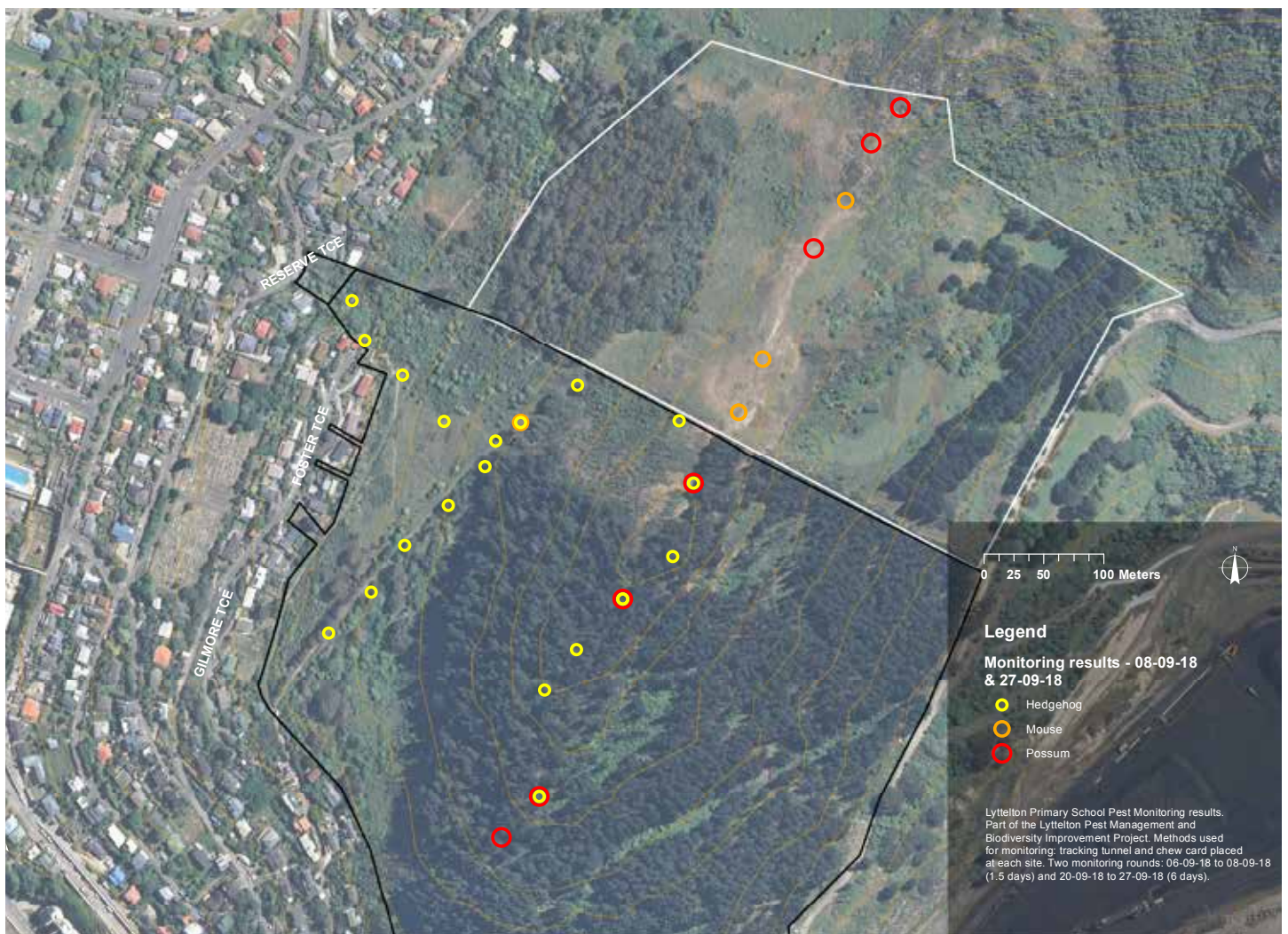
Our project is called The Lyttelton Pest Management and Biodiversity Project. We have monitored using tracking tunnels and chew cards. We have found possum, hedgehogs, and mice.

We are now going to start trapping these pests and recording our results at approximately 12 locations within the reserves. We will be using Goodnature A12 possum traps and DOC 150 traps for small mammals. Whilst there is no poison being used, please keep an eye on small children and pests in the reserves.

We are going to be checking the traps once a week and the kills will be recorded on Trap NZ - Predator Free Port Hills - Urumau Reserve and Port Saddle.

If you would like more information about this project, or would like to help, please contact Lyttelton Primary School.

This was written by Nico and Isaac students from Lyttelton Primary School.





Introducing Myself.....

Kia ora, I am Ruth Targus and whilst some may know me as The Sewing Fairy, others as George and Chesters mum or Scout leader, I'm adding a new title to my list as Manager of the Lyttelton Harbour Information Centre. This brilliant new role allows me to add further challenges to my life as well as share my passion for the Harbour and its people. I see the Information Centre as a central point for for locals and visitors alike to share, learn and reminisce about this changing beautiful harbour we live in. The Centre on Oxford street, Lyttelton, holds a wealth of information from local walks to heritage sites and transportation. Whilst The Review offers a local perspective and harbour happenings, both work together to provide a valuable service to raise the profile of the harbour and keep us informed as a community.

The Information Centre is run entirely by volunteers, a marvelous group that hail from all areas of the harbour. Whilst some entered the role with little harbour knowledge, all have brought along a passion to share their love of the harbour. We work hard as a team to share our local knowledge and one of my roles is to keep all upto date with information through excursions and training sessions. This means that anyone can volunteer ...

...IT COULD BE YOU! Whether you have just moved here or have lived here for generations. I believe everyone has something to share as long as you have 3 hours a week and a desire to learn about the harbour and share that with others I'd love to hear from you 3289093 or office@lytteltoninfocentre.nz

One of my first roles has been developing the membership that connects Lyttelton Harbour businesses with the Information centre so that we can transfer that information to the public. The new membership package will be out next week and it offers any business in the harbour an opportunity to be in our biweekly Review directory, on our website and for the centre to hold their business cards or flyers front of house for a year and all for \$115 gst inclusive. If this may be of interest to your business again feel free to contact me office@lytteltoninfocentre.nz.

So as we gear up for the summer season with new brochures and the slow return of the cruise ships, I take this opportunity to remind all of the treasures that we have on our doorsteps, walking and heritage alike and how great it is to share these with others. I look forward to taking my boys into the hills and sharing harbour spaces with them....maybe see you there.

Article Lyttelton Information Centre

Note The Sewing Fairy continues at Lyttelton Library the first Saturday of each month.



PL Recommends Community-led Committee for Lyttelton Recreation Centre

Project Lyttelton has recommended to Council that it establish a community-led, transitional committee to oversee the reactivation of the Lyttelton Recreation Centre.

The recommendation was put to the Community Board by Project Lyttelton (PL) manager, Trevor Best, at a public meeting last Monday 12 November.

PL is currently the Council's community partner in the Lyttelton Recreation Centre Activation Project. Established in October 2017, and intended to run for two years, the project's intent is to "achieve the financially sustainable re-activation of the Lyttelton Recreation Centre in a manner that actively contributes to improved community and individual wellbeing."

In the past twelve months, the Project team has driven a 53% increase in month-to-month in bookings,* however there is still capacity to increase use across all the Centre's bookable spaces.

"We've approached the project from two perspectives," said Trevor. "In the short term, we've focussed on increasing activity at the Rec. to simply start making it a destination again. Secondly, we've set out to explore in greater depth, the place of the Recreation Centre within the community and to understand how residents would like to make use of it in the future."

"We have achieved a large body of this work in year one and, with the benefit of learning a bit on the job, have a clearer picture of what it will take – and who really needs to be involved, to take any community-owned initiative into Year Two and beyond."

The recommendations put to the Community Board were that Project Lyttelton:

- Broaden membership of the Recreation Centre Advisory Group to include wider community interests, as well as individuals with experience in managing sports or recreational facilities.
- Transition responsibility for the long-term reactivation of the Recreation Centre to this Group (renamed the Lyttelton Recreation Centre Transitional Committee), of which Project Lyttelton may or may not play an active part. The Group can collectively decide whether to continue with the draft Strategic Plan and Community Engagement Process developed by Project Lyttelton.
- Support the Transitional Committee in negotiating a License to Operate, with Council. The LTO would include clear agreement over

responsibility for costs and revenue gathering for each party (Council or Operator).

- Maintain a physical presence, using Timebank volunteers, in the Centre during this transition.

"Project Lyttelton is conscious that some people have felt excluded from the discovery phase of this project," said Trevor. "As an organisation who seeks to improve social connection, understanding and respect, we are sorry for this."

"We have been deeply listening to the conversations in the community that have arisen around Rec Centre use. Consequently, our recommendations for year two of this project reflect our learnings, and our intent to support the creation of a vibrant, community-led recreation hub."

"The next step for the project is for Council and the Community Board to review our recommendations and agree on how to progress. In the meantime, our Timebank volunteers will continue as a friendly presence at the Rec. Centre reception," said Trevor.

"The Rec. is a significant asset for the community. We look forward to its reinstatement as a place for community connection and wellbeing."

Article Project Lyttelton

Project Lyttelton is a community group dedicated to supporting ideas, people and projects that build sustainable communities. If you have energy and an idea, we'd love to hear from you. Perhaps we can help. Lyttelton.net.nz or email: office@lyttelton.net.nz

Strategic Plan: you can view the full Lyttelton Recreation Centre Activation Project Strategic Plan visit www.lyttelton.net.nz

Feedback: please direct feedback on the Plan and its recommendations to: democracyservicesbanksopeninsula@ccc.govt.nz. Please include 'Lyttelton Recreation Centre' in the subject line.

**Source: Christchurch City Council Bookings system, January 2018 – September 2018.*



Waharoa Blessing

At the Lyttelton Recreation Centre there was an intimate ceremony to bless the original Waharoa that was re-installed. It was gifted to the community when the Recreation Centre opened back in the 90's. It was re-instated in the reception area of the building. After being in storage for many years its new home is very prominent.

Caine Tauwhare and Josh Brennan took part in the blessing along with Christchurch City Council Governance team employees and the Recreation Centre activation team.

Josh's ancestor was a carver. There are two people depicted on either side of the waharoa, Paora Taki, a prominent chief at Rapaki and the first Chiarmen of Lyttelton Dr William Donald. The two men worked alongside each other and the carving shows the enhancing of cultures and the joining of European and Maori as the two peoples of New Zealand.



Little Ship Club News

Spirit of Adventure

The Spirit of Adventure is heading south over the summer and there are some great opportunities for you to get on board this beautiful tall ship. She will be in Lyttelton for a public day sail and then she heads south. You can also join a Dunedin to Nelson adults voyage on the 5th Feb 19. If you are interested in becoming a sponsor of the Spirit of Adventure Trust, there is a networking Happy Hour evening also happening on the 6th. More info available on their website.

Public Day Sail in Lyttelton - 6 Jan 19

Naval Point Club News

Situations Vacant

We are still looking for volunteers to help in the cafe, kitchen and bar over the summer season. We are also very keen to get a new caterer into the kitchen and are still on the lookout for a Bar Manager. If you can help out or are interested in any of these positions, please let Marina in the office know. Ph 328 7029

Noelex 22 - 50th Anniversary 16-20 January 2019

NPCL will be hosting the upcoming 50th Anniversary celebration of this very popular trailer yacht class.

Mark your 2019 calendar now and make sure you are ready for fun on and off the water.

Old for New

A date for your diary.

January 9th Coastguard Lifejacket upgrade.



Does your local biodiversity project need support?

In Canterbury there are **10 community-led water zone committees** who work collaboratively to identify freshwater priorities and challenges and make recommendations to councils to address these.

Each water zone committee has \$100,000 a year to allocate to biodiversity projects in their zone to restore local ecosystems and improve water quality. Projects can include anything from fencing off wetlands, to planting native trees or clearing pest vegetation to protect native bat populations. Visit ecan.govt.nz/biodiversity for more information.



Waste Tips

Refillable Containers

Former Timebank Coordinator Sarah Pritchett is now working for WasteMINZ. She's kindly forwarding their e newsletters to the Review. Each edition we will share with you some of the interesting snippets she sends us.

Refullution is a new trend. This means using your old containers and refilling them. In Lyttelton you can do this at Harbour Co-op. Take your empty containers back and there are a range of liquid products from shampoo to cleaners that can be bought. Refilling is so much better than recycling.



Compostable Bags

Beware often the claims made by manufacturers that bags are compostable are not 100% accurate.. The majority of compostable bags on the market are made from genetically modified corn-starch which is not compostable at the council's processing plant because it does not break down within the three month processing timeframe. Please don't put these items in your yellow or green bins as they will contaminate the waste stream and everything will end up in landfill.

Advertising in the Review

Since the inception of the Lyttelton Review we have been very generous with advertising. Any one off advertisements for businesses have generally been published free. Advertisers are encouraged to make a donation to our organisation.

To be a permanently listed business in the directory and have articles written about your business we have a yearly membership fee of \$115 including GST. If you would like to have a yearly listing please contact us **office@lytteltoninfocentre.nz** and we will forward our membership application.

Seniors Photographic Opportunity

Diamond Harbour Camera Club are very pleased to have won funding from the Lyttelton-based Cressy Trust to help run an introductory photography course for senior residents of the Lyttelton Harbour Basin.

We are very fortunate to have Christchurch photographer Scott Fowler to teach the free, two-day course. It will be held in the Green Room of Diamond Harbour Community Hall on Saturday and Sunday 19 and 20 January 2019 from 10 am to 4 pm.

The Cressy Trust was established to support senior residents of the Harbour Basin, so all those accepted onto the course must be aged 60 or over and must live in the Lyttelton Harbour Basin (evidence will be required).

To apply for a place on the course, applicants should email Camera Club Chair Joan Gladwyn at jgladwynnz@gmail.com with their details. Applications must be received by December 15.

Affordable Fruit and Vegetables

Coordinated by the Timebank Lyttelton locals have access to a fabulous weekly supply of fresh fruit and vegetables. Bags are \$6 or \$12. Each week is a lucky dip but more and more people are finding out that this is such good value for money and good for your health.

Now located at the Lyttelton Recreation Centre – 25 Winchester Street Lyttelton it's much easier to collect your produce. Jan Cooper looks forward to seeing you Wednesday afternoon from 12.30. Vegetables can be collected Wednesday 12- 4pm and Thursday 10-4pm. Veggies are paid in advance weekly. If you would like to sign up please get in touch with Jill Larking 0272374960.

The last order for 2018 will be December 19th.

Norman Kirk Memorial Pool

The Christchurch City Council is now selling season memberships for the Norman Kirk Memorial Pool, which can be purchased by calling their **contact centre (open 24/7) on 941 8999**. The swimming season is underway on November 17.

The price this season has increased slightly to \$160 per household, and there will be a replacement fee of \$50 in case they are lost. After payment the CCC swim team will once again ask that each key holder attends an on-site induction to give our team a chance to remind you of the all-important health and safety stuff after which we will reactivate your key.

A date for the diary: this summer's pool party is January 13.

If you have any queries please contact Rowan Foley 03 941 6901 or Rowan.Foley@ccc.govt.nz

Heritage Building - Do you have a Use for this?

Does any one have a use for this old heritage building? It was built over the water beside the Banks Peninsula Cruising Club in the Inner Harbour for the Lyttelton Rowing Club about 1924. later it was moved to the land and used as a club room. The TeAna Marina Association advocated to the Port Company to retain it as a heritage centre to tell the story of the port and Lyttelton boating as an attraction to visitors... Something to visit at the end of the promenade. But they rejected that idea in favour of potentially new and big developments beside the new marina. It has been removed to a temporary industrial site near the tank farm awaiting its fate. Contact Te Ana Marina Association



Warmer, healthier homes a step closer

Canterbury homeowners can now get a \$6000 rates advance to pay for home heating, insulation and ventilation improvements. Environment Canterbury started accepting applications to **Healthier Homes Canterbury**, announced as part of the Long-Term Plan 2018-28.

Eligible ratepayers can apply for an advance of up to \$6000 for heating, insulation and ventilation improvements and pay it back through their rates bills over nine years with interest. The interest rate for those joining before July 2019 is fixed at 5.9% per annum.

Key facts

- Up to \$6000 including GST available per eligible ratepayer
- Paid back over nine years with interest
- Interest rate is fixed at 5.9% per annum (for those who join by June 2019)
- Cost neutral to Environment Canterbury
- Only registered retailers/installers may be used
- Only accepted products may be installed
- Home Performance Assessments strongly recommended
- Environment Canterbury pays registered suppliers directly
- Expected to accept applications until 2028

LIFT Library

Do you know this amazing library is located at the Recreation Centre 25 Winchester Street? For a once off \$20 membership fee you can loan specialist books from the extensive collection. Topics include politics, economics, environmental matters, sustainability, gardening, community development etc. The library is open Monday to Friday 10-4pm and Saturday morning 10-2pm.

There is also a series of film screenings. Keep an eye out for posters in town.

L= LE, I= Inspiration, F= Facts, T= Transition (LE= Living Economies – <http://www.livingeconomies.nz/>)
25 Winchester Street, Lyttelton 021 899 404 or 03 328 7272
lift@lyttelton.net.nz

Pool Passes

For the last couple of Wednesdays, the Garage Sale team have been thinking about Lyttelton families who might like a pool pass. Proceeds from the sales from

the last couple of Wednesdays and shopper donations have been pooled. Names will be put in a hat and selected. In the next edition we can tell you who the lucky families are. Thank you Garage Sale team and Project Lyttelton for this great initiative.

Thank you Christ College

Teams of students have been helping in local reserves for the past week. Banks Peninsula Conservation Trust have had some maintenance work carried out in their new planting area on the Port Saddle while the Lyttelton Reserves Management Committee have had help removing lots of fennel. Further afield there has been work down at Naval Point and Cass Bay. Thanks also to Conservation Volunteers who facilitated much of this work.



One of the Rose Show Winners



CCC Emergency Preparedness Tips

Check that your mobile phone can receive emergency messages.

What is Emergency Mobile Alert?

Emergency Mobile Alerts are messages about emergencies sent by authorised emergency agencies to capable mobile phones. The alerts are designed to keep people safe and are broadcast to all capable phones from targeted cell towers.

The alerts can be targeted to areas affected by serious hazards and will only be sent when there is a serious

threat to life, health, or property, and in some cases for test purposes.

If you get an alert, read the message and take it seriously. It will tell you what the emergency is and what to do. It will also tell you which agency sent the message and if needed, where to go for more information. Visit <https://www.civildefence.govt.nz/>

Lyttelton Community House (LCH) meals programme

This service provides five cooked meals a week. On Monday & Wednesday recipients will receive two hot meals (to cover Mon/Tues & Wed/Thurs). On Friday one hot meal plus a dessert is delivered. These meals are delivered between approximately 3-4pm, and cost \$8.50 each. If you are interested in this service, please get in touch with Hannah at hannah@lytteltoncommunityhouse.org.nz. Meals are now available for collection in Diamond Harbour.

Healthy Harbour programme manager appointed

The Whakaraupō Healthy Harbour partnership has appointed a programme manager to oversee the implementation of the Whaka Ora Healthy Harbour plan.

Governors Bay resident Karen Banwell started in the role this month. She will be based at Rapaki, but also have the opportunity to spend time with each partner organisation. However, her main time will be out among the community. The final plan, which was launched in March this year, sets out an aspirational vision for the harbour to restore the ecological and cultural health of Whakaraupō/Lyttelton Harbour as mahinga kai from the mountains to the sea. It outlines actions to achieve that vision based on the principles of change-making, collaboration and providing a foundation that can be used for future generations.

Chair of the Whaka Ora Healthy Harbour governance group Yvette Couch-Lewis said community involvement was important to the five partners, Environment Canterbury, Te Hapū o Ngāti Wheke, Te Rūnanga o Ngāi Tahu, Christchurch City Council, and the Lyttelton Port Company.

Karen will be working with the Whakaraupō communities and partners to ensure the success of the plan, Yvette said.

Environment Canterbury zone delivery manager Paul Hulse said Karen would be an asset to the plan implementation team.

"She comes with a wealth of experience within plan implementation and has great connections with people in the Harbour already," he said.

Lyttelton Harbour Network Meeting

6th December 2018 at 12:30pm, 25 Canterbury Street Lyttelton

The next Lyttelton Harbour Network meeting will be held in the Lyttelton Community Board room. Please feel free to bring your own lunch, but nibbles, tea, and coffee will be provided.

Emergencies and Airbnb

In another interesting development in the event of a large scale emergency in our area, as well as having local householders offer to accommodate people Airbnb has just signed an agreement with emergency authorities to provide accommodation via their network for displaced people. Apparently this was used this week for the floods down south!

Karen has previously worked for Christchurch City Council and Environment Canterbury as a senior strategy advisor, but more recently as a strategic planning advisor at Regenerate Christchurch. She is currently the chair of the Governors Bay Community Association, a trustee of the Avon Heathcote Estuary Ihutai Trust and recently completed a PhD in geography on community resilience.

This new role is particularly exciting as it combines Karen's work experience with the things and places she loves.

"I was sent the job description by multiple people who said this is written for you.

"This job was pretty much a culmination of my work experience and what I love to do and I'm committed to working with the harbour community for ecological and cultural outcomes," Karen said.

Karen's appointment was officially announced at Lyttelton Primary School on Thursday.

Article Environment Canterbury



Christmas 2018



Lyttelton Community House invites you
to join us for Christmas lunch at
Lyttelton Fire Station on Tuesday 18th
December at 11:30 – 1:30.

Please RSVP to Hannah by the 7th
December- (03) 741-1427

Lyttelton
Community
House Trust





Preschool Music Starting in Lyttelton

When: Tuesday 27th November (weekly in school term)
At: The Recreation Centre, 25 Winchester Street
Time: 9.45 am – 10.30 am
Cost: \$5.00 per child
Ages: 0 to 5 years



Contact details:

Amalia Drain: Registered Suzuki Teacher for Violin and Preschool Music
Email: amaliadrain@gmail.com
Cell: 021 253 1896
Website: www.suzuki.org.nz

“Every Child can Learn”
Dr Suzuki, ‘[Nurtured by Love](#)’

Events

TUESDAY NOVEMBER 27TH

Lyttelton Club 7pm
Tuesday Evening Housie

WEDNESDAY NOVEMBER 28TH

Lyttelton Arms 5-7pm
Happy Hour

Lyttelton Arts Factory 7.30pm
Absurdism II

THURSDAY NOVEMBER 29TH

Lyttelton Arms 5-7pm
Happy Hour

Lyttelton Arts Factory 7.30pm
Absurdism II

Lyttelton Club 5-6 7-8pm
Happy Hour

Wunder Bar 7pm
Comedy Night

FRIDAY NOVEMBER 30TH

Lyttelton Arms 5-7pm
Happy Hour

Lyttelton Club 4-6pm
Happy Hour

SATURDAY DECEMBER 1ST

Lyttelton Arms 8.45pm
Happy Hour

Lyttelton Crafts & Treasure 9-1pm
Collets Corner

Lyttelton Farmers Market 10-1pm

Lyttelton's Retro Art and Craft Bazaar 9-1pm

SUNDAY DECEMBER 2ND

Eruption Brewing 3-6pm
Sunday Afternoon Music – Girl from Mars

Lyttelton Arms 5-7pm
Happy Hour

TUESDAY DECEMBER 4TH

Lyttelton Arts Factory 7-8pm
Shut Up and Dance, gold coin

Lyttelton Club 7pm
Evening Housie

Lyttelton Community Board Room 6-8pm
Collets Corner Design Workshop

Wunder Bar 7pm
Open mic and showcase

WEDNESDAY DECEMBER 5TH

Lyttelton Arms 5-7pm
Happy Hour

Lyttelton Arts Factory 7pm
The Boarder Trumped

Lyttelton Arts Factory 7pm
Against the Head

THURSDAY DECEMBER 6TH

Lyttelton Arms 5-7pm
Happy Hour

Lyttelton Arts Factory 7pm
The Boarder Trumped

Lyttelton Arts Factory 8pm
Against the Head

Lyttelton Club 5-6 7-8pm
Happy Hour

Lyttelton Community Board Room 12.30-1.30pm
Lyttelton Harbour Networking Meeting

FRIDAY DECEMBER 7TH

Lyttelton Arms 5-7pm
Happy Hour

Lyttelton Arts Factory 7pm
The Boarder Trumped

Lyttelton Arts Factory 8pm
Against the Head

Lyttelton Club 4-6pm
Happy Hour

SATURDAY DECEMBER 8TH

Library of Tools and Things (LLOTS) 10-1pm
At the market

Lyttelton Arms 5-7pm
Happy Hour

Lyttelton Arts Factory 9-1pm
Mel Parsons Glass Heart Album Tour

Lyttelton Crafts & Treasure 9-1pm
Collets Corner

Lyttelton Farmers Market 10-1pm

Lyttelton's Retro Art and Craft Bazaar 9-1pm

SUNDAY DECEMBER 9TH

Eruption Brewing 3-6pm
Willy Mc Arthur

Lyttelton Arms 5-7pm
Happy Hour

Motukarara Christmas at the Races 10am

COMING UP:

LYTTELTON ARTS FACTORY

Adult Drama Students - 7:30pm Nov 28 and 29

Our Adult drama class will present a series of short 'Pinter-esque' sketches. Come along and enjoy an evening of original performances and observe the absurdity in everyday conversation! Running time approx 40 min, no interval.

Senior Drama Students (Year 9 to 11) - 7pm December 5,6,7

Imagine a futuristic post-apocalyptic world where the inhabitants of a camp on the border discuss and discover the cause of their bleak existence. 2 nights only! Suitable for ages 10+. Running time approx 45 min

Advanced Drama Students (Year 12 & 13.) - 8pm December 5,6,7

Against the Head is written by Joe Bennett and performed by our Advanced (Year 12 & 13) Drama students. Come along and enjoy this highly entertaining production about teenagers and rugby. 3 nights only! Suitable for ages 13+, Running time approx 45 min.

Junior Drama Students (Year 5 & 6) - 6pm Dec 12, 13

Enjoy our variation of Little Red Riding Hood. 2 nights only! Suitable for all ages, running time approx 40 min.

Intermediate Drama Students (Year 7 & 8) - 7pm Dec 12 13

A Christmas LAF Enjoy the talents of our Intermediate (Year 7 & 8) drama students as they present their very own weird and wonderful cabaret show. 2 Nights only! Suitable for all ages, Running time approx 45 min.

Dec 20-22 th	Golden Goose at LAF
Dec 18 th	Community House Xmas Lunch Fire Station 11.30-1.30pm
Dec 23 rd	Albion Square - Community Xmas Carols 7pm
Dec 30 th	Lyttelton Coffee Company Orchestra of Spheres Delany Davidson, Bruce Russel DJ Rory
Jan 6 th	Spirit of Adventure Public Open Day
Jan 9 th	Coastguard Lifejacket upgrade.
Jan 16-20 th	Noelx 22 - 50th Anniversary Sailing at Naval Point
Jan 13 th	Summer Pool Party Lyttelton Swimming Pool

GALLERIES:

Lyttelton Information Centre

Open Monday to Saturday 10-4pm Sunday 11-3pm

Stoddart Cottage Diamond Harbour

December Exhibition Gifted – A Exhibition of new work by Artists and Craftspeople from around the Harbour. Open Friday, Saturday and Sunday 10am - 4pm

The Miniature Gallery. Exhibition 3

Ka Awatea, the time of awakening - featuring a fantastic line-up of contemporary artists responding to items from the Lyttelton Museum collection.

Once again your senses will be delighted with 33 new artworks by Katharina Jaeger, Tony Bond, Julia Holden, Keren Oertly, Jennifer Rendall, Jen McBride, Debbi McLeod, Kim Hennessy, Simon Beyer, Saskia Tranter, and Kristin Stephenson/Hollis.

Curated by Sarah Amazinnia and Holly Cunningham. Supported by Te Hapū o Ngāti Wheke and Lyttelton Museum, and made possible by the Enliven Places Projects Fund, Creative Communities, Structex, Lyttelton Engineering and our awesome neighbours.

Open Thursday, Friday, Saturday 10am -2pm or by appointment 027 4466816

33-35 London Street – access via stairs between Henry Trading and Lyttelton Coffee Company



Community Activities in and around the Harbour this Week

MONDAY

Community Choir

7.30pm Union Chapel, Winchester Street, Lyttelton.
All welcome. Jillie 021 152 8068

Diamond Harbour Yoga

6.30pm - 8pm
General Class, Diamond Harbour Rugby Rooms

Lyttelton Scouts

Every second Monday 6.30-8pm
Contact Ruth Targus 021 259 3086

TUESDAY

Community House

Shared Lunch 12.00pm 7 Dublin Street
Make new friends

Diamond Harbour Yoga

6am - 7am
Early Bird Class
Diamond Harbour Stage Rooms

Lyttelton Library Storytimes

11.00-11.30am

Lyttelton Yoga

9.30am - 10.45am
6.30pm - 8pm, Scouts Den Lyttelton
Contact Rebecca Boot 021 071 0336

Diamond Harbour Bridge Club

1.20pm for 1.30pm start
Diamond Harbour Football Club Rooms. \$4 table
For more information call 329 4868 or 329 4149

Lyttelton St John Youth Division

6.00pm St John Ambulance Station
52 London St, Lyttelton

St Joseph the Worker R.C.Church

9am Mass 21 Exeter Street, Lyttelton
All Welcome More information call 384 1600

WEDNESDAY

Diamond Harbour Bridge Club

Bowling Club Rooms. All welcome
6.40pm for a 6.50 start
Partner finder - Carolyn Craw. Ph 329 4684

Diamond Harbour Singers

7.30 - 9.00pm
Every Wednesday in Stage Room of Community Hall. All welcome. Contact Margie 329 3331

Diamond Harbour Yoga

6am - 7am
Early Bird Class. Diamond Harbour Stage Rooms

Lyttelton Community Garden

10am Every Wednesday. Meet at the garden behind the Lyttelton Pool in Oxford Street. For more information 328 9243

Lyttelton Cubs

6.30pm
Contact Ruth Targus 021 259 3086

Lyttelton Garage Sale

10.30am 54a Oxford Street, Lyttelton
Second Hand Bargains and more.

Lyttelton Harbour Fruit and Vegetable Collective

Trading between 12.30 and 2.45pm
at the Lyttelton Recreation Centre, 25 Winchester Street Lyttelton
Contact Jill Larking for more info 027 237 4960

Lyttelton Library Wednesdays Knit and Yarn

10.00-12.00pm

Lyttelton Play Group

Lyttelton Playgroup
At Kidsfirst Lyttelton
12.30pm- 2.30pm
33 Winchester St Lyttelton
Call 03 328 8689 for more information

Harbour Yoga Vinyasa

6pm-7.15pm. 021 882 403
Gentle Class, Trinity Hall

THURSDAY

Community House Flat Walking Group.

10am
Contact Hannah Sylvester. Ph: 741 1427

Diamond Harbour Yoga

6am - 7am Early Bird Class
Diamond Harbour Stage Rooms

Governors Bay Volunteer Fire Brigade

7.00pm Governors Bay Fire Station
Weekly Training, New Members Welcome

Lyttelton Garage Sale

10.30am 54a Oxford Street, Lyttelton
Second Hand Bargains and more.

Lyttelton Volunteer Fire Brigade

7.00pm Lyttelton Fire Station
Weekly Training, New Members Welcome

Stoddart Cottage Gallery Craft Co-op

Meets monthly on the third Thursday 4pm at Stoddart Cottage. For more information contact Secretary Ann Skelton shed21@xtra.co.nz. See also our Facebook page.

Community Activities in and around the Harbour this Month

FRIDAY

Diamond Harbour Yoga

6am - 7am

Gentle Class

Diamond Harbour Rugby Rooms

Lyttelton Garage Sale

10.30am 54a Oxford Street,

Lyttelton Second Hand Bargains and more.

Lyttelton Library Fridays Babytimes

10.30-11.00am

Lyttelton Yoga

9.30am - 10.45am

Scouts Den Lyttelton

Contact Rebecca Boot 021 071 0336

SATURDAY

Lyttelton Farmers Market

10.00am London Street,

Lyttelton Fresh produce, Live Music, Buskers and More

Lyttelton Garage Sale

10.00am 54a Oxford Street, Lyttelton

Second Hand Bargains and more.

Lyttelton Harbour Bazaar Market

10.00am No 6 London St. Artists, Bric a Brac and More

Harbour Yoga

9am Trinity Hall, Lyttelton Rec Centre

SUNDAY

St Saviour's at Holy Trinity

17 Winchester Street

10.00am Service with Holy Communion

All Welcome

GROUPS

Banks Peninsula Community Board

10am Second Monday Each Month

Meetings Open to the Public

Bay Harbour Toastmasters

6.30pm. Every 2nd and 4th Wednesday of the month

Lyttelton Community Board Room, 25 Canterbury St

Contact: Jann Meehan, 021 263 1040

Diamond Harbour Civil Defence

7.00pm Third Wednesday of the month.

Community Church Diamond Harbour

Contact: Wendy Coles 0211541434

Governors Bay Civil Defence

7.00pm Third Wednesday of the month.

Governors Bay Fire Station Contact

Contact: Ian Palmer 3299 160

Lyttelton Harbour Business Association

For more information contact: admin@lhba.co.nz

Lyttelton Museum Historical Society

Contact Wendy McKay

info@lytteltonmuseum.co.nz

Lyttelton Netball Club

Contact Flo McGregor flomac@extra.co.nz

Lyttelton Rugby Club

For details visit the club Facebook Page or contact the club's Rugby Manager

Nathan.mauger@gmail.com 021 111 6069

Little Ship Club Canterbury

We meet on the 3rd Thursday of the month usually at Naval Point Club Lyttelton from 7.00pm. The club has regular guest speakers and undertakes a large range of activities that increase the knowledge and skills and enjoyment of its members and for the benefit of yachting generally. All welcome
www.littleshipclubcanterbury.wordpress.com

Lyttelton Time Bank

1-4pm Wednesday, 10-4pm Thursday, 1-4pm Friday
Lyttelton Recreation Centre 25 Winchester St Lyttelton
328 9243 www.lyttelton.net.nz

Lyttelton Toy Library

Located at the Lyttelton Rec Centre Squash Court 25 Winchester St. Open each fortnight on Saturday morning 10-12 noon. For more information see Facebook Lyttelton Toy Library or email lytteltontoylibrary@gmail.com or call Helen 021 075 4826

Naval Point Old Salts Lunch

The Old Salts Lunch is being held on the 2nd Tuesday of every 2nd month with the next one being held next Tuesday, 10th February starting @ 12:00 with 2 course lunch commencing @ 12:45.
Contact Barry Bowater 329 4828 or 0272743520

Narcotics Anonymous Lyttelton Meeting

6:30 Monday

Community House. 5 Dublin St.

6.30 Thursday

25 Canterbury Street

www.nzna.org

St Joseph the Worker R.C.Church

5.30pm Mass 3rd Sunday of the month. Parish House
21 Exeter Street Lyttelton. Ph: 384 1600

PLACES TO STAY

B@B Settlers Retreat 153 Main Road, Governors Bay	021 186 3220 021 144 2979	thackergj@slingshot.co.nz Hosts: John and Gaynor Thacker
Black Kiwi Apartment, 78a Reserve Terrace, Lyttelton	028 401 8720	jmimab@hotmail Host: Jemima
Dockside Accommodation 22 Sumner Road, Lyttelton	021 152 3083	lytteltonaccommodation.co.nz
Governors Bay Bed and Breakfast Governors Bay Road, Governors Bay	03 329 9727	gbbedandbreakfast.co.nz Host: Eva
Governors Bay Hotel 52 Main Road, Governors Bay	03 329 9433 021 611 820	governorsbayhotel.co.nz Host: Jeremy and Clare
Harbour Lodge 1 Selwyn Road, Lyttelton	027 242 7886	info@harbourlodge.co.nz www.harbourlodge.co.nz
Little River Camping Ground 287 Okuti Valley, Little River	03 325 1014 021 611 820	littlerivercampground.co.nz Host: Marcus
Orton Bradley Park Camper Van Stay Marine Drive, Charteris Bay	03 329 4730	ortonbradley.co.nz Host: Ian
The Rookery 9 Ross Terrace, Lyttelton	03 328 8038	therookery.co.nz Host: Rene and Angus

EAT, DRINK, DINE

Dark Star Ale House and Cafe Waipapa Avenue Diamond Harbour	03 329 3245	darkstarbrewing@yahoo.com Host: Donna and Martin
Fishermans Wharf Norwich Quay, Lyttelton	03 328 7530	www.fishermanswharf.co.nz Host: PJ
Lyttelton Top Club 21 Dublin Street, Lyttelton	03 328 8740	www.lytteltontopclub.co.nz
Roots Restaurant 8 London Street, Lyttelton	03 328 7658	rootsrestaurant.co.nz Meet: Giulio and Christy

THINGS TO DO

Black Cat Cruises | Quail Island Adventure

B-Jetty, Lyttelton Wharf [Below Oxford Street]

03 328 9078
0800 436 574

blackcat.co.nz

Christchurch Gondola

10 Bridle path Road, Heathcote valley

03 384 0310

welcomeaboard.co.nz

International Antarctic Centre

38 Orchard Road, Christchurch Airport

0508 736 4846

iceberg.co.nz

Jack Tar Sailing

Dampier Bay Marina, Lyttelton

03 389 9259
027 435 5239

jacktarsailing.co.nz
Skipper: Mike Rossouw

Orton Bradley Park

Marine Drive, Charteris Bay

03 329 4730

ortonbradley.co.nz

Naval Point Club

Our Ocean Water Sports Club

03 328 7029
027 379 9212

www.navalpoint.co.nz

LOCAL EXPORTS

Lyttelsoft

Specialising in Accounting Software

03 328 8671

lyttelsoft.co.nz
Meet: Penny Mercer

Real Homes New Zealand Limited

PO Box 94, Lyttelton

03 390 3393
021 224 6637

realhomes.co.nz
Real Estate Agent: Lynnette Baird

Saunders & Co

1063 Ferry Road, Ferrymead

03 940 2435
022 133 6963

saunders.co.nz

HEALTH, BEAUTY, FITNESS

Honey Comb

34 London Street Lyttelton

03 328 8859

honeycombhair@extra.co.nz
or see our facebook page

Lyttelton Health Centre

18 Oxford Street Lyttelton

328 7309

www.lytteltonhealthcentre.co.nz

Stoddart Cottage Gallery Presents...



Gifted

An Exhibition of
New Work by
Artists & Craftspeople
from around
Lyttelton Harbour

Stoddart Cottage Gallery
Diamond Harbour

Gallery Open 10 am to 4 pm

Fridays, Saturdays and Sundays throughout December 2018

FISHERMAN'S WHARF

**NEW SUMMER HOURS
NOW OPEN TUESDAY'S**



**Tuesday to Friday
11:30am - 9pm
Saturday & Sunday
(Breakfast 8am to 11:30pm)
8am - 9pm
Phone 3287530
fishermanswharf.nz**



LIVE^{KOHA} AT THE POINT

SUNDAY SESSIONS **GODLEY GROUNDS** DIAMOND HARBOUR
2:30PM - 4:30PM : 13 JAN - 03 MAR

diamondharbour.info/live-at-the-point

Lyttelton Squash Ladder



- All abilities
- Free membership - just pay for court time as usual
- Find new players & play more games
- Increase your flexibility & cardio endurance
- Burn some calories

Sign up at <https://LytteltonSquash.nz>