

LYTTELTON REVIEW

May 2018 • Issue: 211

PURAU • DIAMOND HARBOUR • CHURCH BAY • CHARTERIS BAY • GOVERNORS BAY • RAPAKI • CASS BAY • CORSAIR BAY • LYTTELTON



IN THIS EDITION:

- News from the Top Club
- A Glimpse at the Past
- Recreation Centre

Next Issue print date: Issue 212, 12th June 2018.

Content Deadline: 5pm 8th June 2018.

Review Creators

Lyttelton Harbour Review is a 100% voluntary community newsletter initiative developed after the February 2011 earthquake. It's a Lyttelton Harbour Information Centre initiative produced by former Chairperson Wendy Everingham and Committee Member Jenny-Lee Love.

The objective of the Lyttelton Harbour Review is to help keep local residents informed with what is going on in the wider Lyttelton Harbour community. Of course the success of the Lyttelton Harbour Review could not be possible without the ongoing support and enthusiasm from the wider community.

A big thank you goes out to everyone who sends information; is willing to be interviewed or lets us know what might be happening in the neighbourhood. The Lyttelton Harbour Review project would not be possible without you all.

If you have an event, topic, sport announcement, fundraiser or cause that you would like to share with the harbour community, then Wendy or Jenny-Lee would love to hear from you:

Wendy Everingham
Mobile: 021 047 6144
Email: review@lytteltoninfocentre.nz
Content Deadline: 5pm Friday

Jenny-Lee Love
Email: review@lytteltoninfocentre.nz
Content Deadline: 5pm Friday

Lyttelton Information Centre
Office: 328 9093
Email: office@lytteltoninfocentre.nz

Subscribe to the Review:

Email either Wendy or Jenny-Lee with the words "Subscribe Me" in the subject line and the Lyttelton Harbour Review will be delivered to your inbox.

In 2018 the Lyttelton Harbour Review is produced fortnightly. Any important information between times will be emailed as a Lyttel Broadcast if necessary.

Hard Copies of the Review are available at:

The Lyttelton Arms
Lyttelton Bakery
Leslies Bookshop
Lyttelton Community House
Lyttelton Harbour Information Centre
Lyttelton Health Centre
Lyttelton Library
Lyttelton Top Club

Back Copies Available to Download:
www.lytteltonharbour.info



Results in for Lyttelton by-election

Tyrone Fields has won the Lyttelton Subdivision by-election for the Banks Peninsula Community Board, progress results show.

So far, the return rate for votes is 39 per cent. However, progress results do not include special votes and voting papers returned today before the noon deadline.

The progress results show the following:

FIELDS, Tyrone	465
Labour (The People's Choice)	
STRUTHERS, Robyn	169
Independent Citizens	
COUCH-LEWIS, Yvette	144
STANBRIDGE, Ashley	100
DIETSCHKE, Paul	55
Independent	

Preliminary results will be available by Thursday and the final result is expected to be confirmed after Saturday, 19 May.

Christchurch City Council Electoral Officer Jo Daly says it is good to see people involved in the democratic process.

"It's great that people have a voice in who represents their local community," Ms Daly says.

"By casting their vote, they have demonstrated the importance of their individual contribution to community decision-making."

The Banks Peninsula Community Board is made up of representatives from the Lyttelton, Mt Herbert, Akaroa and Wairewa Subdivisions and the councillor for the Banks Peninsula Ward.

Article CCC Newsline



News from the Top Club

It's been 3 weeks now since our super successful opening of the sports bar, and we are settling into our new temporary home pretty well. It was an absolute pleasure to meet so many people back in April.

A special thanks too to Heisenburger. I think the number of people coming through the door surprised everyone, and sadly not everyone got to enjoy the burgers on offer. I certainly don't think it detracted from the day at all, and I got only positive feedback on the event. The bar staff were simply amazing, and with some help from members and the committee, we all had a phenomenal day.

It really did prove that the people are out there, and we hope sincerely to be able to see you all again soon.

The revised figure of new members from the day is 102, which made it a cracking success. We've also had a few busy nights since, and the bar staff have all commented on them seeing faces they are meeting for the first time, or better still some old faces returning to check us out.

We love seeing you, and hope to catch you all for a drink over the coming weeks.

So what's next??

Following our opening night, we have now closed off the old bar entirely. Last weekend a few of us helped smash the old bar up and get the place ready for phase 2. The place will be unrecognisable I assure you.

John has also finished painting the old restaurant area and just this week we had the new carpet laid down.

This will be our overflow for the sports bar, as well as where we'll hold our weekly Housie nights. Talking of unrecognisable - that part of the club looks absolutely amazing, and we hope people will continue to enjoy the million dollar views from there.

We shall be moving the pool table this week too - This will be moved into the old Restaurant area - Pool with a view anyone?

We are also investigating new furniture for the place. Having purchased the new bar leaners late last year, we are very lucky to have had some loans of stools from Rob to try out. We know we can't make everyone happy all the time, but we are absolutely committed to listening to our members on what they want. Try to be as constructive as possible though - we are all here for the same reasons - to make the Top Club a success and a great place to meet up with your friends.

We have some temporary signage going up soon, and are also looking at some options for more sign writing. I will try and share this on facebook as we progress, so please sign up to that page and watch out for more details.

Finally we are also looking at upgrading our current courtesy van. We want this to be a real feature for our members in the community, and always care that you each get home safely after meeting up with your friends at the Top Club.

Article Top Club

A Glimpse at the Past

Underground Overground Archaeology

There are so many archaeological sites around Lyttelton. Being the first major European settlement in this area there is lots to be learnt about how those early settlers lived. Uncovering this aspect of our past is an unexpected side effect of the earthquakes. As historic sites are cleared or re-developed the archaeologists come in to see what they can discover. Underground Overground Archaeology was commissioned to look at all the Council owned sites in Lyttelton. What they have found is being disseminated to the public via Archaeology Week. A series of walking tours were held around Lyttelton showing interested residents what they had discovered.

Our starting point was Sutton Quay with a story about Gladstone Pier. Gladstone Pier was built in 1874 and at the time it cost 8,081.15 pounds to construct. It was named after the first ship that docked, The Gladstone. In 2011 it was destroyed by the earthquakes. "The pier was too dangerous to deconstruct in the normal way so the structure was demolished in the most unconventional way from the sea" said Megan Hickey one of the archaeologists.

Megan's role was to document the structure and unearth the stories it held. In 1912 she highlighted the port had experienced lots of problems with rats on this wharf. "To combat the problem a concrete retaining wall had been built into the pier". The

concrete, the broken piles and deck were cleared by painstakingly working alongside on a barge floating closely to the pier. Carefully the team was able to pick bits out of the collapsed pier. "Fastenings and timber were the most interesting features. Wood was mostly eucalyptus, a known hard timber", she said. The team reflected on the site. The cliffs above were not very natural. She learned that contractors and prisoners were used to quarry stone from the cliffs. If you look in the vicinity of the Holcim cement tanks you can see where the stone was cut from the cliffs.

The Lyttelton Fire Brigade site in London Street was used for multiple purposes. The team's historical research found that the site was originally two large blocks. One block, the site of the current car park used to have a 2 roomed cottage and a blacksmiths and then for a very long time it was unoccupied.

On the site of the new fire station in 1864 it was the home of the Rising Sun Hotel. The team found over 800 bottles down the back bank. In 1870 the pub burned to the ground. This was replaced by a business called Curtis and Co. It was an aerated water factory. The steps and wall in the photo are all that remain from this original factory. Aerated water was a big business at the time. The business continued operating until the 1940's with a series of owners.





Across the road at Albion Square was the former Albion Hotel. In the day it had 15 rooms for hire and a skittles area. Out the back were stables for the horses and a big gully of rubbish! The team found four large rubbish pits, with heaps of broken beer bottles, ceramics and some personal items. Megan said,

"In those days a hotel was known to be good if all the china matched". There was lots of matching china in the rubbish pits. At this site they found some personal effects. A broken toothbrush and a dolls head. The most interesting item was the lion shaped handle as shown in the photo. Megan explained that hotels of the time were interesting to the team because this was where the proprietors showed their individuality with accessories.

"Just like nowadays business owners like to personalize their businesses to reflect the feel they are trying to create".

We then popped over the road to the site of the new museum. This was the home of the Council Service Centre prior to the earthquakes. This site has also had a very mixed history. In the very early days of the settlement it was known as Mutton's Shop. The

piece of child's porcelain was found here. Like many buildings of the day it burned down in the large fire in 1870. It was re-built and destroyed by fire again in 1896. Rebuilt several times again and then destroyed in the 2011 earthquakes.

We made a quick trip to Oxford Street to the former gaol site. Excavations here revealed a very old drain made out of scoria. It was most unusual and not seen before.

Our township is filled with these quirky things from the past. It's great that the urban archeologists are bringing bits of it to life again in 2108!

Article Lyttelton Review



Lyttelton Information Centre team out learning

On Tuesday 8 May the team from the Information Centre was involved in a training afternoon to find out more about two key organisations in our local area, Community House and the Recreation Centre.

At Community House Hannah Sylvester met us. She works as a community facilitator who gave us a comprehensive overview of the services and support they provide. They host a free community lunch every Tuesday from 12.30-2.00pm where everybody is welcome. The chef and volunteers also prepare healthy meals for Lyttelton and Diamond Harbour residents who request this service. These are delivered twice weekly and cover four meals. Community House also helps people with health and employment issues. Altogether, a wonderful supportive organisation to have here in Lyttelton.

Up the hill we journeyed to the Rec Centre where there has been a lot of change recently. Project Lyttelton is working in partnership with the City Council to reinvent the Rec Centre. Clare Coates and Jill Larking who are two of the "activators" from Project Lyttelton met us and shared their vision for this community hub. It is all about increasing community well being and participation so opportunities are being promoted around using this space for sport, creative

and community events. Our team was surprised by how many different spaces are contained within the building and how greater utilisation of this building would be fantastic for many locals and visitors.

We finished up with a delicious afternoon tea at the Shroom Room and chatted about what we had experienced over the afternoon. We also shared ideas for future training afternoons. These happen on a monthly basis and focus on providing staff with more knowledge about local history and important places in our area. Next month we are looking forward to taking a tour of the Port. In coming months we hope to have training sessions that explore the history of the gaol, the Lyttelton/Antarctic link and Rapaki marae.

The Information Centre has a number of new volunteers who have recently joined the team and add to the wealth of experience on the front desk.

We are a friendly team and would love to have a few more volunteers join us to help provide quality information to our visitors. We provide supportive training sessions in the Centre working alongside an experienced staff member. Most volunteers are rostered on for a 3 hour shift weekly or fortnightly. If this is something that you think you may be interested in please drop in on a Monday and have chat to me or email at office@lytteltoninfocentre.nz

Jenny Fowler



Coming to Life Again Our Recreation Centre

The Recreation Centre is transforming. Saturday's Open Day was evidence of that. Well over 200 residents popped into the Open Day on Saturday May 12th. Event organisers Jill Larking, Claire Coates, Holly Cunningham and Bex De Prospro were all very happy with the response.

"The venue is coming alive and more activities and easier accessing of the facility are attracting more people to the space. Just last week there was a Family Curry Night, the Book Group has started, LIFT has moved in and so it goes" said Jill.

For LIFT Library organizer Juliet Adams it was a really exciting time. The library now has a permanent home in the foyer. Thanks to Kerry Donnelley a series of white cupboards have been installed in the foyer and they house the collection very neatly.

"Now LIFT is available Monday to Friday 10am to 4pm, with Reception staff able to receive your returns and issue stocks to you. And on Saturdays, after I've done my weekly shopping at the Market (couldn't miss that!) I'll be there to open up from 10am till 2 pm, and at other times with film screenings" Juliet said.

"Now that the library is no longer in my living room, there is loads of room for you to bring back the books, DVDs and magazines you have borrowed and have finished with. I've been putting off emailing reminders to members to bring back things they've had for several months as I didn't have room to put them – but now there is space, and more people likely to want to borrow them".

Kay Commons and Monica Palmer are really happy that their book group idea has been well supported.



They had eight people interested at their first meeting. Another signed up at the open day! "Our book group is during the day, relaxed and affordable" said Kay.

Margaret Jefferies is the team leader for the re-activation. "I was able to bring my grandson along and he gave a table tennis demonstration", she said. Table tennis is another new activity available on the mezzanine floor and that is free. "If you need a quick break during the day you are welcome to pop up and play a game. Monday to Friday the table is available 10-4pm", said Jill.

A wide range of current tutors/sports providers also came to the Open Day. That provided visitors with a great opportunity to try activities. A representative from Sport Canterbury also came along. She was able to see what the Centre provided and what gaps there were. A resident came along looking for an exercise class between Zumba and Tai Chi. Looks like something will be provided shortly.

For the first time in many years an art space was provided on the Mezzanine floor. There was a hive of activity around that. It's hoped in the future there will be a permanent community art space.

The Open Day was the perfect opportunity to ask more people about a new name for the centre and what other activities they might support. A sticker system was used to highlight your top three ideas for further activities. There was a lot of support for a community lounge, art space and a climbing wall. "There is lots of energy around this space now. The community is re-claiming the space and already you can feel the warmth of the place that comes when locals can and are able to shape its direction" said Claire.

Article Lyttelton Review.

Hot off the Press.

Badminton is starting Sunday May 20th. 4-6pm. If you'd like to be part of that contact Megan Jamieson 02102640146





Port Town Calls, Soulstyle Opens

The Tin Palace is a well-loved building in Lyttelton. It's now the home of another creative venture, Soulstyle, an organic hair salon and coffee bar.

Owners Greg and DeAnna Campbell have been drawn to our harbour for a long time. DeAnna a dancer and Greg a DJ have been attending and performing in the township over the years. "My first gig as a DJ was at the Harbour Light Theatre many years ago", said Greg. Recently they both performed at the Lyttelton Arts Factory in a dance extravaganza. Dancing and music however are their hobbies. Hairdressing is their chosen profession.

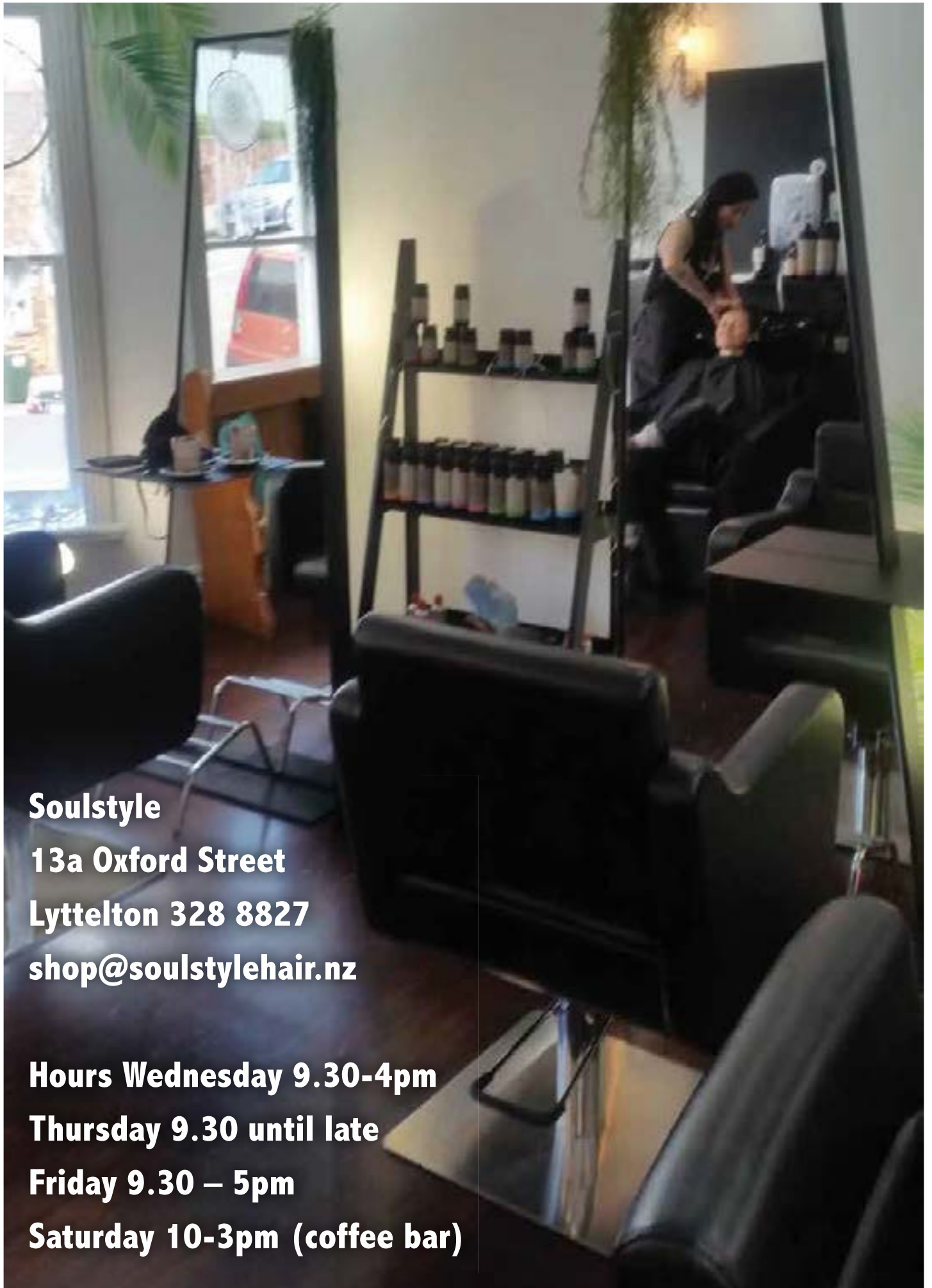
In the early days of developing their hairdressing business DeAnna recalls how she used to travel to Governors Bay regularly as a mobile hairdresser. This is how she started to build up their clientele in this area. The new shop in Lyttelton works perfectly for the customers she worked with all those years ago and the new customers they are seeking.

The Lyttelton branch of the salon is complimented by their original store in New Brighton. That's been running since 2009. The couple have a proven track record of success. The salon's key point of difference

from other hair businesses is the focus on organic hair treatments. DeAnna explains that means that their hair dyes are plant based natural colours. They use products with natural organic ingredients sourced as close to home as possible. No ammonia based products are used within this store. Most of the products come from New Zealand or Australia. As well as all the regular services a salon offers they also have fun providing feather extensions.

The ethos of trying to do the right thing for the planet flows seems to flow right through the entire business. Environmentally friendly cleaning products are only used. You are also treated to delicious organic teas, coffee and hot chocolate. Yes the store has its own coffee bar. Anyone is welcome to pop in and out for a coffee. There is also a secret garden courtyard you might like to try out. Saturday is mostly focused as a coffee bar to coincide with the Markets however if you book hair treatments will also be offered. As an added bonus they support the Orangutan Project to help this precious, endangered species to survive & thrive.

Article Lyttelton Review



Soulstyle

13a Oxford Street

Lyttelton 328 8827

shop@soulstylehair.nz

Hours Wednesday 9.30-4pm

Thursday 9.30 until late

Friday 9.30 – 5pm

Saturday 10-3pm (coffee bar)



World-renowned performers star in Lyttelton Arts Factory cabaret

For their first cabaret production of the year, the Lyttelton Arts Factory is bringing a new twist to its show featuring a line-up of world-renowned performers.

The Revolver Club cabaret will have performances from Guinness World Record holder for the highest number of elastic bands on his face and comedy star, Shay Horay, Wellington-based circus group, Laser Kiwi, and Swiss Nouveau Cirque's aerialist, Jenny Ritchie.

Other performers in this star studded event will include the masked Mexican comedian, El Jaguar, Guinness World Recorder holder for record number of touches extinguishes in his mouth within one minute, Pascal Ackerman and popular Christchurch DJ, Trillion.

Co-founder of Lyttelton Arts Factory, Mike Friend said "the flair of the performers and their unique talents will really captures everybody's imagination."

The theatre is known for its spectacular cabaret nights, including acrobatics and fire performances, and co-creator and performer, Shay Horay, promises that The Revolver Club will be a night of aerial circus, comedy and cabaret magic.

The Lyttelton Arts Factory stages four cabaret productions a year, with The Revolver Club the first for 2018.

Horay said he wanted to bring something different to their usual cabarets.

"I've combined stand-up comedy, sketch and world class circus, involving nation-wide and international acts to create a wonderfully diverse show."

The Revolver Club will be doing three shows over two nights on June 1 and 2.

"The Lyttelton Arts Factory cabaret has now been reinvented as the revolver experience." Horay said.

The Revolver Club will be held on Friday June 1 at 7:30pm and Saturday June 2 at 7:30pm and an extra late show at 11:00pm

Tickets are \$28 and available online at www.laf.co.nz

Lyttelton Arts Factory - corner of Oxford Street and Sumner Road, Lyttelton

Article Lyttelton Arts Factory





Beca Heritage Week 2018 event registration is now open!

We're calling out to all community groups, businesses and individuals who want to hold events during this year's festival. If you've got a great idea for Beca Heritage Week 2018, we want to know about it.

Applications can be made online at ccc.govt.nz/heritageweek.

Application information and the online form, Heritage Week Community Grant funding information and full terms and conditions can all be found on the Christchurch City Council website

Strength from Struggle – remembering our courageous communities

This year there are some significant anniversaries in terms of large scale national and international events including:

- 125 years since women's suffrage achieved in New Zealand

- 100 years since the World War I armistice

- 100 years since the 1918 influenza pandemic.

The theme for Beca Heritage Week 2018 reflects these significant anniversaries which were hard won or hard fought struggles in world and New Zealand history. These anniversaries present an opportunity to remember the challenges faced by many communities in the past, commemorate the loss, courage and endurance of those who came before us, and celebrate their victories.

For any further enquiries, please email heritage@ccc.govt.nz.

Biodiversity Fund

Council has set aside \$200,000 per annum for projects that protect and enhance sites of ecological significance. Applicants can be private landowners or organisations. Up to \$40,000 a year can be available for up to 5 years, with grants covering 50% of costs: CCC Biodiversity Fund Close-off dates for applications are 1 March, 1 May and 1 December 2018.



Looking for a space to work or meet?

Lyttelton Library has two rooms which can be booked for meetings or workshops, or used as a quiet space to work. Both rooms seat up to 8 people, and have Bright Signs which can be linked by an HDMI cable to your laptop.

The Glass meeting room is just inside the front doors and provides a quiet space for reading or working. It can be used casually by anyone visiting the library, but we advise making a booking if you are wanting to use it for a specific purpose for an hour or more. Depending on the intended use there may be a charge. Bookings for this space can be made by talking to the library staff or phoning the Library call centre on 941-7923.

Charges may also apply to the Green meeting room which is tucked around by the Adult Fiction collection. It is a more private space, and can be booked through Council Customer Services either at the library or by phoning the Council call centre on 941-899.

Both rooms are accessible only during the library's opening hours of 10-6 on Mondays to Fridays, and 10-1 on Saturdays.

Feel free to come on down to the library for a look at the rooms and chat to us about how you can use them.

Lyttelton Library and Customer Services
Cnr London and Canterbury Street

Article CCC

Increased dog registration fees

The cost of registering your dog will go up by \$2 from 1 July. The increase means those with responsible dog ownership status who register their dog before July 1 will have to pay \$59 for their first dog and \$41 for each of their other dogs. More information can be found: <https://ccc.govt.nz/news-and-events/newsline/show/2571>



Collett's Corner- Design Model Announced

Have you been wondering whats happening with Collett's Corner? Drum roll pleaseWe have an announcement.... It's the ATTRACTION model!

Colletts Corner = 4 levels of goodness for Lyttelton locals and Visitors to enjoy.

Basement Level	Roman Baths
First Level	Co-Work/Cafe/Shop
Second Level	Quirky Hotel / Apartments
Fourth Level	Cinema/ Bar

Pretty exciting hey.

So what happens next?

*The programme is to complete the design and planning this year, apply for consents next year and complete the construction to open the building at the end of 2020.

Our next presentation for Collett's Corner is on Wednesday June 6, 6-7:30 pm at The Lyttelton Community Board Rooms on Canterbury Street. We will be sharing the programme in more detail, outline the details for the design competition and sharing ways you can be involved. So please put this date in your calendar! We will be posting the event invite soon.

A BIG Thank you to all in those in the community who participated in the idea sharing for the property, discussions and final decision-making ! With winter looming we are dreaming of luxuriating in those Lyttelton Roman Baths as much as you are! So bring on Colletts Corner.

Hire the Wardroom

Do you have a birthday or celebration you would like to hire the wardroom for? Naval Point would love to host your function. Please contact Marina on office@navalpoint.co.nz or call 03 328 7029 for details and availability. Discounts available to club members.

Do you have any ideas for winter functions. Let us know in our suggestion box. Our Bar Manager, Gail Waring, will be available to serve you.

Apology

Whoops we made an error in the last edition.

Mark Mason was the author of the Anzac Day poem.

Lyttelton Rotary Raffle

Anthea Struthers was the winner - and a thank you to everyone who purchased tickets for their support.

Zumba Gold® Fitness

Tuesday: 1.30pm – 2.30pm, Lyttelton Recreation Centre, Lyttelton (25 Winchester Street)

Friday: 11.30am – 12.30pm, Lyttelton Recreation Centre, Lyttelton (25 Winchester Street)



Lyttelton Community House (LCH) meals programme

This service provides five cooked meals a week. On Monday & Wednesday recipients will receive two hot meals (to cover Mon/Tues & Wed/Thurs). On Friday one hot meal plus a dessert is delivered. These meals are delivered between approximately 3-4pm, and cost \$8.50 each. If you are interested in this service, please get in touch with Hannah at hannah@lytteltoncommunityhouse.org.nz

Advertising in the Review

Since the inception of the Lyttelton Review we have been very generous with advertising. Any one off advertisements for businesses have generally been published free. Advertisers are encouraged to make a donation to our volunteer organisation.

To be a permanently listed business in the directory and have articles written about your business we have a yearly membership fee of \$165 including GST. If you would like to have a yearly listing please contact us office@lytteltonharbourinfo.nz and we will forward our membership application.

Lyttelton Harbour Network Meetings

What Would You Like to Know More About?

We have had feedback from those who attended the last network meeting that the Funding presentation was really helpful. If you have a suggestion you think may be of interest for a future presentation please let us know. MeredithAnne.Williams@ccc.govt.nz

House for Rent

Oxford St, Lyttelton 3 bedrooms & 2 bathrooms

A rare find in Lyttelton - off street parking, double internal access garage & loads of storage. Only 5 minutes walk to the Lyttelton's world famous Market, Cafes, Bars and Restaurants! School, Swimming Pool

& Public Transport. Warm fully insulated home with heatpump. Lovely views out to the hills & the port with pleasant outdoor space for entertaining. Renovated to high standards, with all EQC work completed.

Upper Level: Lounge, Kitchen & Dining Room. Master Bedroom with En Suite. Lower Level: Main Bathroom. Double Bedroom & Single Bedroom / Office. Internal access Double Garage with built in storage. Flat fully fenced section with tidy garden. Double draw dishwasher, LED / energy saving lighting & built in wardrobes in all bedrooms.

References will be required. Pets negotiable, no smokers.

Available from June 2018. Rent \$475 - 495 per week depending on requirements. Contact Richard for further information or viewing: Tel: 022 0123435 Email: rich.homer@icloud.com

Business for Good Award

The Christchurch City Council is pleased to be sponsoring the Business for Good Award in this year's Champion Canterbury Business Awards. If you know of a socially responsible business or social enterprises that would want to enter, please let them know applications are open from 7 May until 18 June. All entries and nominations are submitted online through the Champion Canterbury website www.championcanterbury.org.nz.

Moving Forward Together in Christchurch

Do you want to increase community participation in and contribution to recreation and sport? Build commitment and connections in your local communities? This workshop will help you develop your engagement and collaboration skills. The workshop will be Thursday 14 June, 2018, 9.30am - 4.30 pm at Matuku Takotako: Sumner Centre, 14-16 Wakefield Ave, Sumner. The cost is \$160 + GST members, \$210 + GST non-members. Book your place now by contacting emma.pavey@ccc.govt.nz, 027 6890 072.

Christchurch and Banks Peninsula Recreational Harbour and Waterway Users Group

The Environment Canterbury Harbourmaster's Office has created a forum for recreational harbour and waterway users to share information and discuss possible issues relating to navigation safety for recreational vessels, and the resolution, management or removal of those issues.

It is envisaged the forum may be hosted by the various parties participating and that the management

of each meeting be undertaken by that party. Environment Canterbury Harbourmaster's Office staff will attend and participate in each meeting providing support and information on possible options where required.

Meeting details:

Sumner Lifeboat Station, 2 Scarborough Road, Scarborough. 6th June 2018: 1900 meet and greet, meeting starts 1930.

All clubs, organisations and people interested are welcome to attend.

Please RSVP to Gary Manch, gary.manch@ecan.govt.nz

Ōtākaro Orchard: Adobe Brick Making Workshops

Want to get muddy and lend a hand at the same time? Ōtākaro Orchard have just started a series of weekend adobe brick-making workshops. You'll not only learn the craft of adobe brick-making, but you'll also be helping Ōtākaro Orchard reach their goal of making 4,000 bricks to then be used for their public building at their orchard site in the central city. Multiple Saturday & Sunday sessions until 3 June - \$5 koha recommended. These workshops have been supported by Council's Enliven Places Projects Fund. Workshops are open to all ages. Book in by visiting Eventbrite and bring the whanau.

Family Legal Advice Clinic

Every Wednesday from 3:30pm until 6pm. Justice and Emergency Precinct, Level 1 (use entrance A2). The service runs as a drop in, so no appointments are necessary. This is a specialist legal advice for people with family law matters. Urgent applications can generally be drafted with clients on the night. The service is run with the support of the Christchurch Family Court and the University of Canterbury, and the Family Court registrars stay late to assist with applications that can be filed on the night. For more information phone 366 6870 or 0508 226 529.

Join the Little Ship Club !

We are now in a new financial year.

So your subs are due again!

Many thanks to those who have already paid their Little Ship Club subs for the 2017-2018 year. Our membership year runs from 1 October - 30 September. This small financial contribution supports buying small gifts for our guest speakers, and assist with the running of other events. We also sometimes get invited to special events with limited numbers and these are available to current members only. Other benefits of membership can be found on our website. If you are not sure if you have paid then drop me an email and I can let you know.

Your \$20.00 payment can be made in to our bank account number 03 0802 0094950 00. Or in cash directly to our treasurer Paula at our next meeting. Please also drop us an email to let us know your details.

Naval Point AGM

Just a quick note to let you know the date of the AGM for Naval Point Club Lyttelton on Thursday 26 July at 7pm. We would appreciate members supporting this meeting so book the date in now. Please note: turning up does not mean you will be delegated a job, it means you are interested in the running of the club.

Project Lyttelton AGM

Our AGM is scheduled for 7pm July 12th. Pop a note in your diary.

Steam Tug Lyttelton

The Open Day that we advertised in the last edition is being postponed. The response was so great that more work was required to address health and safety issues. A new date will be announced shortly.

Affordable Fruit and Vegetables

Coordinated by the Timebank Lyttelton locals have access to a fabulous weekly supply of fresh fruit and vegetables. Bags are \$6 or \$12. Each week is a lucky dip but more and more people are finding out that this is such good value for money and good for your health.

Now located at the Lyttelton Recreation Centre – 25 Winchester Street Lyttelton it's much easier to collect your produce. Jan Cooper looks forward to seeing you Wednesday afternoon from 12.30. Vegetables can be collected Wednesday 12- 4pm and Thursday 10- 4pm. Veggies are paid in advance weekly. If you would like to sign up please get in touch with Jill Larking 0272374960.



DANCING WITH THE SEASONS *Entering the Stillness*

Friday 25 May
7-9pm

Union Chapel
40 Winchester St
Lyttelton
\$10

An Open Floor Dance and Ritual to
mark the turning of the year

fb OpenFloorChristchurch





Save the date.

Lyttelton Community House

Morning tea

Lyttelton Fire station on

London Street on Thursday

24th May from 10am- 12pm

**We look forward to seeing
you**

**Please call if you need help
with transport**

(03) 741-1427

Create to Construct

Well-known artists from Lyttelton to Mount Herbert have created a unique collection of artworks that depict their reflections on Governors Bay Jetty and the dramatic landscape that encompasses this icon of the Banks Peninsula. There are some truly inspiring pieces.

The art will be displayed at the Create to Construct exhibition from 29 May to 3 June in the Pūmanawa room at the Arts Centre, Worcester Boulevard, Christchurch.

It will be auctioned on 9 June, from 3pm, at Governors Bay Hotel. There is a complimentary glass of bubbles for the first 100 people through the door.

As well as the auction for the commissioned pieces, there will be a silent auction for several pieces of bay-related donated artworks.

For the names of the artists and their biographies, and opening times of the exhibition, please see the Trust's website: <http://www.savethejetty.org/create-to-construct>. Once the exhibition opens, we'll add pictures of the artworks to this website.

Governors Bay Jetty is 300m long, the same length as New Brighton Pier and twice the length of Main Wharf in Akaroa. It was built in 1874 to moor steam ships and before it was closed in 2011 due its unsafe condition, was used for walking, boating, admiring the landscape, and jetty jumping.

Governors Bay Jetty Restoration Trust was formed to save the jetty and will replace it so that it looks the same and will last for 100 years. The project will cost around \$3 million. The Trust has secured at least \$500,000 from Christchurch City Council. It is fundraising for the rest.

Please let us know whether you're coming (email Louisa at savethejetty@gmail.com) by 31 May.

We hope to see you at the exhibition and auction!



Belonging.

600 or so hectares of rolling farmland easing gently into foothills too steep for anything except sheep – land which had been in his family for three previous generations and which now belonged to him. At least, he was the major share-holder in the family company that technically owned the land.

It was a beautiful calm autumn evening as he stood near the homestead looking out over the farm. The sun was well down in the west throwing long shadows that emphasised the contours of the land. Constantly changing clouds were taking on their first pink tinges while a gentle breeze created one of the oldest sounds on earth as it rustled the leaves on the trees around the house. Peace and contentment filled his mind as he turned to go and join the family for the evening meal.

As he did so a ray of sunshine broke through the clouds, momentarily illuminating a distant copse. Suddenly his mind filled with the thought that moments like these were part of a different reality, one that he could recognise but which was entirely indifferent to him. Since this land had split from Gondwana all those millions of years ago, it had been shaped by earthquakes, volcanoes and erosion, changing infinitely slowly on a time-scale unimaginably different from the one that ruled his days, in a process that would probably continue long after the last humans had faded from the planet. How could he possibly claim or believe that this land belonged to him? A brief century or so and the traces of his family's activities would have disappeared. This wasn't a matter of belonging but privileged relationship. Quite a different thing.

Pensively he moved towards the house.

By John Riminton
Diamond Harbour Writers Group





LYTTELTON RESERVES MANAGEMENT COMMITTEE

Community Planting Days at Urumau Reserve 2018

A series of quality native tree planting days.

17th June, 15th July and 19th August

10-1pm

Tools, plants and lunch provided. Please bring gloves.

Meet at the far end of Foster Terrace at 10

Registration essential:

Email lytteltonreserves@hotmail.co.nz

Phone 328 9093 or 021 047 6144



Events

WEDNESDAY MAY 23RD

Lyttelton Arms 5-7pm
Happy Hour

THURSDAY MAY 24TH

Lyttelton Arms 5-7pm
Happy Hour

Lyttelton Club 5-6 7-8pm
Happy Hour

Lyttelton Community House 10am-12pm
Morning Tea Fire Brigade

FRIDAY MAY 25TH

Lyttelton Arms 5-7pm
Happy Hour

Lyttelton Club 4-6pm
Happy Hour

Union Church Dancing with Seasons 7-9pm

SATURDAY MAY 26TH

Lyttelton Arms 8.45pm
Happy Hour

Lyttelton Crafts & Treasure 9-1pm
Collets Corner

Lyttelton Farmers Market 10-1pm

Lyttelton's Retro Art and Craft Bazaar 9-1pm

SUNDAY MAY 27TH

Freemans 3.30-6.30pm
Carmel Courtney and Friends

TUESDAY MAY 29TH

Lyttelton Arms 8.45pm
Happy Hour

Lyttelton Club 7pm
Evening Housie

Wunder Bar 7.30pm
Open mic and showcase

WEDNESDAY MAY 30TH

Lyttelton Arms 5-7pm
Happy Hour

THURSDAY MAY 31ST

Lyttelton Arms 5-7pm
Happy Hour

Lyttelton Club 5-6 7-8pm
Happy Hour

FRIDAY JUNE 1ST

Eruption Brewery 7-10pm
Adam Hattaway

Lyttelton Arms 5-7pm
Happy Hour

Lyttelton Club 4-6pm
Happy Hour

SATURDAY JUNE 2ND

Hell Fire Club 7.30pm
Ben Brown, Dominic Hoey, Tuisata Avia \$10

Ferrymead Night Market 4pm
Happy Hour

Lyttelton Arms 5-7pm
Happy Hour

Lyttelton Crafts & Treasure 9-1pm
Collets Corner

Lyttelton Farmers Market 10-1pm

Lyttelton's Retro Art and Craft Bazaar 9-1pm

SUNDAY JUNE 3RD

Lyttelton Arms 5-7pm
Happy Hour

Freemans 3.30-6.30pm
Carmel Courtney and Friends

Create to Construct
29 May to 3 June in the Pūmanawa room at the Arts Centre, Worcester Boulevard, Christchurch.
Auction 9 June, from 3pm, at Governors Bay Hotel.

COMING UP:

June 4-10th Civil and Naval Negroni Week

June 5th Lyttelton Arts Factory Shut Up and Dance 7-8pm

June 10th Andy Coyle's Poetry Pub Quiz and Poetry Anthology Fundraiser Hell Fire Club

June 29th Festival of Lights Street Party

GALLERIES:

STODDART COTTAGE GALLERY DIAMOND HARBOUR:

Diamond Harbour Painting Group to treat us to their talents at Stoddart Cottage Gallery. Every Fri/Sat/Sun 10am - 4pm throughout this month.

Whakaraupo Health Hub



Haere mai, e te Rawhiti

“Welcome o sunrise”

15 June 2018: Te Hapu O Ngati Wheke have invited some providers to show case their services to the Lyttelton and surrounding community.

Address: Rapaki Drive

Venue: Wharekai

Time: 10am – 1pm

Nau mai, Haere Mai Whanau, Whanui.

Community Activities in and around the Harbour this Week

MONDAY

Community Choir

7.30pm Union Chapel, Winchester Street, Lyttelton.
All welcome. Jillie 021 152 8068

Diamond Harbour Yoga

6.30pm - 8pm
General Class, Diamond Harbour Rugby Rooms

TUESDAY

Community House

Shared Lunch 12.00pm 7 Dublin Street
Make new friends

Diamond Harbour Yoga

6am - 7am
Early Bird Class
Diamond Harbour Stage Rooms

Lyttelton Library Storytimes

11.00-11.30am

Lyttelton Yoga

9.30am - 10.45am
6.30pm - 8pm, Scouts Den Lyttelton
Contact Rebecca Boot 021 071 0336

Diamond Harbour Bridge Club

1.20pm for 1.30pm start
Diamond Harbour Football Club Rooms. \$4 table
For more information call 329 4868 or 329 4149

Lyttelton St John Youth Division

6.00pm St John Ambulance Station
52 London St, Lyttelton

St Joseph the Worker R.C.Church

9am Mass 21 Exeter Street, Lyttelton
All Welcome More information call 384 1600

WEDNESDAY

Diamond Harbour Bridge Club

Bowling Club Rooms. All welcome
6.40pm for a 6.50 start
Partner finder - Carolyn Craw. Ph 329 4684

Diamond Harbour Singers

7.30 - 9.00pm
Every Wednesday in Stage Room of Community Hall. All welcome. Contact Margie 329 3331

Diamond Harbour Yoga

6am - 7am
Early Bird Class
Diamond Harbour Stage Rooms

Lyttelton Cubs

6.30pm
Contact Mark Brabyn 027 281 6180

Lyttelton Garage Sale

10.30am 54a Oxford Street, Lyttelton
Second Hand Bargains and more.

Lyttelton Harbour Fruit and Vegetable Collective

Trading between 12.30 and 2.45pm
at the Lyttelton Recreation Centre, 25 Winchester Street Lyttelton
Contact Jill Larking for more info 027 237 4960

Lyttelton Library Wednesdays Knit and Yarn

10.00-12.00pm

Lyttelton Play Group

Lyttelton Playgroup
At Kidsfirst Lyttelton
12.30pm- 2.30pm
33 Winchester St Lyttelton
Call 03 328 8689 for more information

Harbour Yoga Vinyasa

6pm-7.15pm. 021 882 403
Gentle Class, Trinity Hall

THURSDAY

Community House Flat Walking Group.

10am
Contact Hannah Sylvester. Ph: 741 1427

Diamond Harbour Yoga

6am - 7am Early Bird Class
Diamond Harbour Stage Rooms

Governors Bay Volunteer Fire Brigade

7.00pm Governors Bay Fire Station
Weekly Training, New Members Welcome

Lyttelton Garage Sale

10.30am 54a Oxford Street, Lyttelton
Second Hand Bargains and more.

Lyttelton Volunteer Fire Brigade

7.00pm Lyttelton Fire Station
Weekly Training, New Members Welcome

Community Activities in and around the Harbour this Month

FRIDAY

Diamond Harbour Yoga

6am - 7am

Gentle Class

Diamond Harbour Rugby Rooms

Lyttelton Garage Sale

10.30am 54a Oxford Street,

Lyttelton Second Hand Bargains and more.

Lyttelton Library Fridays Babytimes

10.30-11.00am

Lyttelton Yoga

9.30am - 10.45am

Scouts Den Lyttelton

Contact Rebecca Boot 021 071 0336

Networking Meeting 9.30-10.30

Fat Tony's, 17 London St

More Info call 021 027 05450

Lyttelton Museum Historical Society

Contact Wendy McKay

info@lytteltonmuseum.co.nz

Lyttelton Netball Club

Contact Flo McGregor flomac@xtra.co.nz

Lyttelton Rugby Club

For details visit the club Facebook Page or contact the club's Rugby Manager

Nathan.mauger@gmail.com 021 111 6069

Little Ship Club Canterbury

We meet on the 3rd Thursday of the month usually at Naval Point Club Lyttelton from 7.00pm. The club has regular guest speakers and undertakes a large range of activities that increase the knowledge and skills and enjoyment of its members and for the benefit of yachting generally. All welcome
www.littleshipclubcanterbury.wordpress.com

Lyttelton Time Bank

1-4pm Wednesday, 10-4pm Thursday, 1-4pm Friday
Lyttelton Recreation Centre 25 Winchester St Lyttelton
328 9243 www.lyttelton.net.nz

Lyttelton Toy Library

Located at the Lyttelton Rec Centre Squash Court
25 Winchester St. Open each fortnight on Saturday
morning 10-12 noon. For more information
see Facebook Lyttelton Toy Library or email
lytteltontoylibrary@gmail.com or
call Helen 021 075 4826

SATURDAY

Lyttelton Farmers Market

10.00am London Street,

Lyttelton Fresh produce, Live Music, Buskers and More

Lyttelton Garage Sale

10.00am 54a Oxford Street, Lyttelton

Second Hand Bargains and more.

Lyttelton Harbour Bazaar Market

10.00am No 6 London St. Artists, Bric a Brac and More

SUNDAY

St Saviour's at Holy Trinity

17 Winchester Street

10.00am Service with Holy Communion

All Welcome

GROUPS

Banks Peninsula Community Board

1pm Second Monday Each Month

Meetings Open to the Public

Bay Harbour Toastmasters

6.30pm. Every 2nd and 4th Wednesday of the month

Lyttelton Community Board Room, 25 Canterbury St

Contact: Jann Meehan, 021 263 1040

Diamond Harbour Civil Defence

7.00pm Third Wednesday of the month.

Community Church Diamond Harbour

Contact: Wendy Coles 0211541434

Governors Bay Civil Defence

7.00pm Third Wednesday of the month.

Governors Bay Fire Station Contact

Contact: Ian Palmer 3299 160

Lyttelton Harbour Business Association

Naval Point Old Salts Lunch

The Old Salts Lunch is being held on the 2nd Tuesday of every 2nd month with the next one being held next Tuesday, 10th February starting @ 12:00 with 2 course lunch commencing @ 12:45.

Contact Barry Bowater 329 4828 or 0272743520

Narcotics Anonymous Lyttelton Meeting

6:30 Monday

Community House. 5 Dublin St.

6.30 Thursday

25 Canterbury Street

www.nzna.org

St Joseph the Worker R.C.Church

5.30pm Mass 3rd Sunday of the month. Parish House
21 Exeter Street Lyttelton. Ph: 384 1600

PLACES TO STAY

B@B Settlers Retreat 153 Main Road, Governors Bay	021 186 3220 021 144 2979	thackergj@slingshot.co.nz Hosts: John and Gaynor Thacker
Black Kiwi Apartment, Reserve Terrace, Lyttelton	022 0541954	blackkiwibnb@gmail.com Host: Sasha
Dockside Accommodation 22 Sumner Road, Lyttelton	021 152 3083	lytteltonaccommodation.co.nz
Governors Bay Bed and Breakfast Governors Bay Road, Governors Bay	03 329 9727	gbbedandbreakfast.co.nz Host: Eva
Governors Bay Hotel 52 Main Road, Governors Bay	03 329 9433 021 611 820	governorsbayhotel.co.nz Host: Jeremy and Clare
Harbour Lodge 1 Selwyn Road, Lyttelton	027 242 7886	info@harbourlodge.co.nz www.harbourlodge.co.nz
Little River Camping Ground 287 Okuti Valley, Little River	03 325 1014 021 611 820	littlerivercampground.co.nz Host: Marcus
Orton Bradley Park Camper Van Stay Marine Drive, Charteris Bay	03 329 4730	ortonbradley.co.nz Host: Ian
The Rookery 9 Ross Terrace, Lyttelton	03 328 8038	therookery.co.nz Host: Rene and Angus

EAT, DRINK, DINE

Dark Star Ale House and Cafe Waipapa Avenue Diamond Harbour	03 329 3245	darkstarbrewing@yahoo.com Host: Donna and Martin
Fishermans Wharf Norwich Quay, Lyttelton	03 328 7530	www.fishermanswharf.co.nz Host: PJ
Lyttelton Top Club 21 Dublin Street, Lyttelton	03 328 8740	www.lytteltontopclub.co.nz
Roots Restaurant 8 London Street, Lyttelton	03 328 7658	rootsrestaurant.co.nz Meet: Giulio and Christy

THINGS TO DO

Black Cat Cruises Quail Island Adventure B-Jetty, Lyttelton Wharf [Below Oxford Street]	03 328 9078 0800 436 574	blackcat.co.nz
Christchurch Gondola 10 Bridle path Road, Heathcote valley	03 384 0310	welcomeaboard.co.nz
International Antarctic Centre 38 Orchard Road, Christchurch Airport	0508 736 4846	iceberg.co.nz
Jack Tar Sailing Dampier Bay Marina, Lyttelton	03 389 9259 027 435 5239	jacktarsailing.co.nz Skipper: Mike Rossouw
Orton Bradley Park Marine Drive, Charteris Bay	03 329 4730	ortonbradley.co.nz
Naval Point Club Our Ocean Water Sports Club	03 328 7029 027 379 9212	www.navalpoint.co.nz

LOCAL EXPORTS

Lyttelsoft Specialising in Accounting Software	03 328 8671	lyttelsoft.co.nz Meet: Penny Mercer
Real Homes New Zealand Limited PO Box 94, Lyttelton	03 390 3393 021 224 6637	realhomes.co.nz Real Estate Agent: Lynnette Baird
Saunders & Co 1063 Ferry Road, Ferrymead	03 940 2435 022 133 6963	saunders.co.nz

HEALTH, BEAUTY, FITNESS

Honey Comb 34 London Street Lyttelton	03 328 8859	honeycombhair@extra.co.nz or see our facebook page
Lyttelton Health Centre 18 Oxford Street Lyttelton	328 7309	www.lytteltonhealthcentre.co.nz

NOW

WEEKDAYS 10-4

RECREATION CENTRE

LYTTELTON

POPUP
PING



PONG

free

adult supervision required