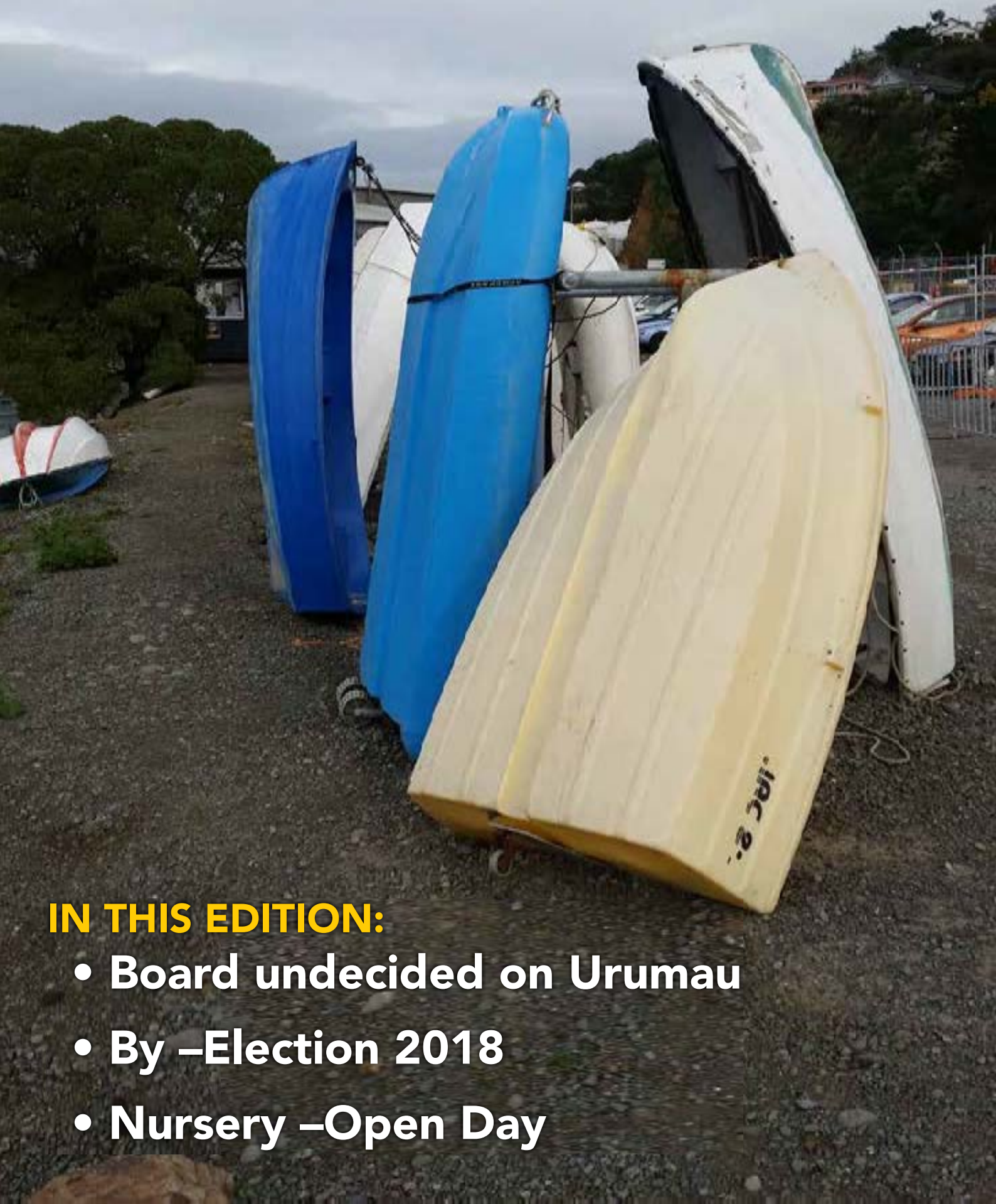


LYTTELTON REVIEW

April 2018 • Issue: 209

PURAU • DIAMOND HARBOUR • CHURCH BAY • CHARTERIS BAY • GOVERNORS BAY • RAPA KĪ • CASS BAY • CORSAIR BAY • LYTTELTON



IN THIS EDITION:

- Board undecided on Urumau
- By –Election 2018
- Nursery –Open Day

Next Issue print date: Issue 210, 8th May 2018.

Content Deadline: 5pm 4th May 2018.

Review Creators

Lyttelton Harbour Review is a 100% voluntary community newsletter initiative developed after the February 2011 earthquake. It's a Lyttelton Harbour Information Centre initiative produced by former Chairperson Wendy Everingham and Committee Member Jenny-Lee Love.

The objective of the Lyttelton Harbour Review is to help keep local residents informed with what is going on in the wider Lyttelton Harbour community. Of course the success of the Lyttelton Harbour Review could not be possible without the ongoing support and enthusiasm from the wider community.

A big thank you goes out to everyone who sends information; is willing to be interviewed or lets us know what might be happening in the neighbourhood. The Lyttelton Harbour Review project would not be possible without you all.

If you have an event, topic, sport announcement, fundraiser or cause that you would like to share with the harbour community, then Wendy or Jenny-Lee would love to hear from you:

Wendy Everingham

Mobile: 021 047 6144

Email: review@lytteltoninfocentre.nz

Content Deadline: 5pm Friday

Jenny-Lee Love

Email: review@lytteltoninfocentre.nz

Content Deadline: 5pm Friday

Lyttelton Information Centre

Office: 328 9093

Email: office@lytteltoninfocentre.nz

Subscribe to the Review:

Email either Wendy or Jenny-Lee with the words "Subscribe Me" in the subject line and the Lyttelton Harbour Review will be delivered to your inbox.

In 2018 the Lyttelton Harbour Review is produced fortnightly. Any important information between times will be emailed as a Lyttel Broadcast if necessary.

Hard Copies of the Review are available at:

The Lyttelton Arms

Lyttelton Bakery

Leslies Bookshop

Lyttelton Community House

Lyttelton Harbour Information Centre

Lyttelton Health Centre

Lyttelton Library

Lyttelton Top Club

Back Copies Available to Download:

www.lytteltonharbour.info



Conundrum.

In my youth, (and I'm going back a considerable period of time now) we were fortunate to have a number of pets of various species as members of our family. They were a part of the framework of our whanau, and were valued for the colour that they added to our lives. In the fullness of time however, (and the fullness of time tends to come a little earlier in the case of one's pets) the Grim Reaper snatched within a short space of time two of our ancient cats, and one time worn rooster.

Our grief was profound, and in due course they were buried in the same area at the back of our rambling garden. The story might have stopped there, but my sister and I decided that there should be a more permanent memorial for our beloved pets, so suitably inscribed crosses were erected and a ceremony was developed to celebrate their lives. We were pleased with our efforts, and when another ancient hen fell off its perch, the systems were in place to ensure that she was interred with appropriate dignity.

Now however a problem, call it a conundrum if you will, arose, here we were, junior undertakers if you like, with a well developed cemetery, and a most appropriate burial service, but we had literally no customers, and given the healthy state of all of our remaining animals no prospective customers. It did seem such a pity. Fortunately for us, but unfortunately for our next client, a hedgehog made the fatal mistake of crossing the road at night in front of our house, and was duly squashed by an oncoming car. Upon its discovery the next morning we decided that this was the answer to our conundrum, for this poor animal was one of God's creatures, and it deserved to be buried in a formal and proper manner. So a service was carried out and he/she became the next part of our cemetery. Over the next year or so our cemetery expanded, a bird that flew into our window, and broke its neck, a chicken that drowned in the water trough, a rabbit that collided with a car, a canary that had sung her last song, that sort of thing.

Looking back over the years I take great pleasure in remembering our Undertaking (please forgive the pun). There are many things in my life that I would change if given the chance, but that is not one of them.

Bryan Fowler Diamond Harbour Writers Group.

Fill the school holidays with autumn fun

Discover superhero plants

Find out about plants with superpowers in the Botanic Gardens Plant Power Discovery Trail(external link) from 14 April to 29 April. Kids can follow clues to discover how plants defeat their enemies and use fire to grow, they can also learn about carnivorous plants. Pick up your free booklet from the Botanic Gardens Visitor Centre.

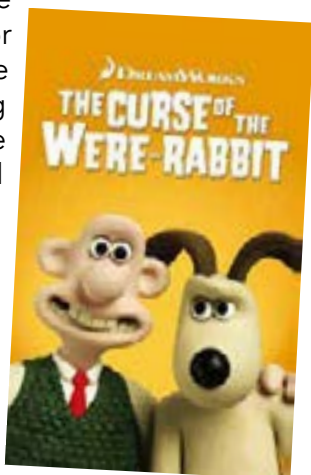
Get creative with collage

Christchurch Art Gallery is encouraging kids to be inspired by its current exhibition, British artist John Stezaker's Lost World, and get creative with collage. The education centre is hosting Collage Zoo(external link) for five to eight year olds at 11am from 16-18 April, 20 April, and 23 to 27 April.

On the same dates but at 1pm, there will be My Paper Universe(external link) sessions for older children aged eight to 13. They'll get the chance to collage their own surreal landscapes using vintage magazines.

Hop to a free ANZAC Day movie

You can also head to the Christchurch Art Gallery for a free family evening at the movies. The gallery is screening Aardman Animations' The Curse of the Were-Rabbit(external link) at 6pm on Wednesday 25 April at the Philip Carter Family Auditorium. In this installment of the popular series, Wallace and his loyal dog, Gromit, set out to discover the mystery behind the garden sabotage that plagues their village and threatens the annual giant vegetable growing contest. Bring your own movie snacks and drinks, no bookings required. The auditorium will be open from 5.30pm so arrive early for the best seats.



Find indoor action at the libraries

They're always popular in the school holidays so get in early for Christchurch City Libraries' programme(external link) of fun creative activities at their three learning centres, Te Hapua (Halswell) Library, Upper Riccarton Library and South Library. The workshops on offer include; Lego Animation, Minecraft Game Zone, and Robo Fun. There are also sessions teaching Traditional Maori Games and Earth Smart STEAM events focused on sustainability and recycling. Call (03) 941 7923 or email learningcentre@ccc.govt.nz.

There are drop-in holiday activities at many libraries,

check the events calendar(external link) for dates and times. There's no charge or booking required for these sessions which include making paper suncatchers, book cover bookmarks, a 3D printing demo, and maker space family time.

Climb into the sun at the museum

On a grey day, Canterbury Museum could be the spot to bask in some sunlight. Sunlight – Ihi Kōmaru explores the science behind the sun in a hands-on exhibition designed to appeal to all ages. There's the chance to climb inside a giant inflatable to find out what the sun sounds like, and to make vibrant shadows in the colour mixing game. There's also an ultraviolet scavenger hunt competition with the chance to win a prize. Sunlight was developed and toured by Te Manawa Museum of Art, Science and History, Palmerston North.

Let them build

Get the kids creating and building with lego at the Imagination Station(external link) in Cathedral Junction. Open daily from 10am until 6pm it offers holiday programmes and workshops, including Stop Motion Animation, Eco Powered Technic Contraptions and LEGO Mindstorms. Book online to guarantee entry during busy times.

Head to the theatre

Written and directed by Dan Bain, A Paintbox of Clowns is a silent show for children that's filled with slapstick, clowning and physical comedy. Starring a mischievous trio of clowns (Red, Green and Blue), the performances at the Court Theatre from 16 to 28 April are recommended for children aged three to seven. All tickets are \$10. The Malthouse Theatre presents Witch's Cat Wanted, adapted and directed by Nickie Wellbourn, from 14-29 April and performed by Canterbury Children's Theatre.

Hit the pool

Having a splash around is a great way to burn off some energy and the indoor pools at Jellie Park and Graham Condon Recreation and Sport Centres are open throughout the holidays. Work on the spa, steam room and sauna at Jellie Park will be finished on Saturday 14 April, restoring normal access to the pools.

Pioneer Recreation and Sport Centre's main pool remains closed while repairs and upgrades are carried out but the outdoor Waltham Pool will remain open longer than usual, until Sunday 29 April, to provide extra swimming opportunities.

Go for gymnastics

If the littlies need some fun and challenging exercise Graham Condon has Tumbletimes sessions for pre-schoolers at 9.30am every weekday during the holidays except ANZAC Day, 25 April.

Article CCC Newsline



Community Board undecided on new Urumau Reserve Development Plan

The Banks Peninsula Community Board has not come to a decision regarding the implementation of a new development plan for Lyttelton's Urumau Reserve.

The Community Board met on Monday for an extraordinary meeting to discuss the new 2018 development plan, which was supposed to replace the previous plan from 2008. The plan has been developed by the Christchurch City Council. It is authored by recreation planner, Delia Walker and engagement advisor, Philippa Upton.

During the meeting, the Community Board heard feedback on the 2018 development plan from public submitters, who had initially provided written feedback during a consultation process for the public in August and September last year. At the end of the meeting, the Community Board opted to leave the report on the table, as they wanted

to seek further clarification over certain issues raised by members of the public. These mainly focus around the environmental impacts of new tracks, the legality of the current tracks, and the consequences of increased traffic and parking in the area.

The Board established that until another plan is decided upon and adopted, no further development, other than what was originally included in the 2008 plan, should be carried out in Urumau Reserve.

However, the board did agree that while they partake in the decision-making process, essential maintenance to current tracks should still be carried out. Park rangers have also agreed to work with mountain bikers

to prevent the creation of new 'pirate' tracks.

The reserve is managed by the Lyttelton Reserve Management Committee. Their Chairperson, Wendy Everingham, was the first public submitter during the meeting.

In her ten-minute presentation, Ms. Everingham described Urumau as a "sensitive environmental zone" and said she would like to "preserve" and "regenerate" the small remains of the remnant forest the reserve has left.

Ultimately, she would like the 2018 Development Plan to be thought over, stressing environmental concerns about the current and proposed mountain-biking routes.

Impacts of the mountain-biking tracks which currently exist, as well as new ones proposed in the 2018 development plan, became the main talking point of Monday's meeting.

Secretary of the Lyttelton Reserve Management Committee Brian Downey claimed in his presentation he was only aware of three legal authorizations for walking/cycle tracks in the "sensitive" Urumau Reserve. However, TrailForks, a user-submitted database of mountain-biking tracks, suggests that there are at least nine mountain-biking tracks currently running through Urumau Reserve.

There is no record of legal authorization for these extra tracks from either the Community Board or Reserve Management Committee. However, new and proposed mountain biking tracks are now included on the new 2018 development plan, leading the public to question who had the legal authority to create said tracks.

One public submitter, John Everingham, also questioned the research that was used to create the current and proposed mountain biking tracks during his presentation to the Community Board. He underlined that no environmental impacts had been taken into consideration with both the current tracks and newly proposed ones under the 2018 Development Plan.

The Community Board felt that they could not approve the new plan without first checking the safety and impact of any currently unapproved mountain biking tracks.

Liz Briggs, a planning consultant with experience in reserve management, also felt that any current tracks, as well as those that might be added, need an environmental impact analysis, which the current plan lacks. Mr. Downey also felt strongly on this point, insisting that any new plan must be done with the consultation of an environmental expert. The pine trees planted on this slope ensured stability. After the Port Hill fires, destabilisation happened, and he

worried this could be the same fate for Urumau.

Ms. Briggs added that there has been no consideration of the indigenous forest, rock fall and drainage with the design of new and current mountain biking tracks. She added that there needs to be a council wide policy for mountain biking tracks on land owned by the council due to the sport's increasing popularity.

Greg Jack, President of the Lyttelton Mountain Bike Club, said the Urumau Reserve is the only place near Lyttelton that is suitable for mountain biking and feels that the reserve could be developed to link up with other tracks in the Port Hills. "We are willing and able to build and maintain tracks," he told the Community Board during his presentation in Monday's meeting.

The shared view of the public submitters was to not continue with the current proposed plan. Instead, they are hoping for a new plan to be created with greater public consultation.

The public submitters collectively hope the new plan will factor in the environmental concerns of the Reserve Management Committee and the demands of the Lyttelton Mountain Bike Club, all while staying in-line with the kaupapa of saving native plants present in the 2008 plan.

The Community Board also has to consider other concerns in the 2018 Development Plan raised by public submitters. These include the increase in traffic if another entrance to Urumau is added on the narrow Foster Terrace, as well as the impacts of creating multiple 'shared' paths, where walkers have voiced safety concerns of sharing narrow tracks with mountain bikers.

Some people are also hesitant of increasing mountain biking activities in the reserve, out of fear the area may lose its local atmosphere and heritage. It remains unclear what will happen with the 2018 Development Plan moving forward. It appears the Community Board will make a decision for the future once they've analyzed the chief environmental and legal issues raised by public submitters.

The Urumau Reserve Development Plan is not on the agenda for the next Banks Peninsula Community Board meeting, due to be held publicly in Lyttelton on 23rd of April.

Steven Walton, Laura Grigg, Arwen Sommer

New Zealand Broadcasting School students

By – Election 2018.

Voting papers will be in the mail shortly. To help you make your voting decisions the Lyttelton Community Association submitted the following three questions to the Lyttelton Review for our candidates to answer. Each candidate has been asked to write a maximum of 100 words per question. *Candidate's responses are in the order they replied.*

- Q1. How important in your campaign is engaging with voters on social media and personal contact (such as phone calls and door knocking)?**
- Q2. What in your opinion is the most important issue facing the Lyttelton township, and how would you address it?**
- Q3. Banks Peninsula is the 'playground of the city', and should be a key tourist destination for Canterbury. How can the Community Board support this endeavour?**

Paul Dietsche Independent



I believe social media can be used to bridge the gap between the community and with the Community Board yet this is currently underutilized. As such I will endeavour to use it as my primary means of communication during this campaign. I believe this is a good

way to efficiently communicate as well as a chance to engage younger people in the election process.

I believe the most important issue is communication and transparency. In particular I note my repeated frustrations in finding out information about the Donald Street properties, to include the Lyttelton Borough Council stables. Recently this property came up as part of the Heritage future use applications and I don't believe many people saw that or had time to prepare anything for it, certainly not within the 6

week time limit for the submissions. I fear we'll lose a heritage site and end up with a parking lot and that's a poor result when we've already lost so much.

I am more interested in how the Community Board can ensure that, as a tourist destination, development is carried out in a way that protects the interests of the community first. Again, this should be through greater transparency and communication, ensuring that the community are aware of proposed changes and have a chance to have their voices heard. I'm all for progress and development, but not at the cost of our community, heritage and/or environment.

Robyn Struthers Independent Citizens



Engaging with voters personally, as well as through social media, is crucial in any campaign. Because I live in Lyttelton I interact with local residents on a daily basis, whether it be in a local coffee shop or picking up my granddaughter

from school. I also have a Facebook page where I do regular videos on the campaign, along with discussing local issues with people who prefer interacting online. For many years I have worked and volunteered in the local community so I am approachable and accessible to local residents.

As a Community we continue to experience the pressures of ongoing growth in our township. Growth is positive for our Community, but it comes with its challenges. From speaking with voters during this campaign I often hear of the difficulties of finding a carpark in town! If I am fortunate to be elected as your local representative I will work with Council staff finding solutions to this. Car parking issues are something I've been raising with Council for several years but sadly falling on deaf ears.

We are fortunate to live here in this unique and beautiful part of Canterbury. Understandably tourists from all over the world want to come and see what we have to offer. Community Boards are the local face of the City Council and as such they need to constantly advocate for the improvement of local infrastructure to manage the increasing tourism demands on us locally. If elected I will continually remind Council that a prosperous Banks Peninsula is good for the entire City, and they should be investing ratepayer money sensibly in our Community.

Yvette Couch-Lewis



Social media is important in today's society, and I'm not so familiar with it. I have assistance from a supporter to bring me into the modern world so it's new and I'm learning. I have a Facebook page now and I can see why people use it as I've met up with some

whanau who I haven't seen in a while. Yes, the use of multimedia is a most effective way of reaching a wider community to get your messages out. However, there are still people like me who like to shake a person's hand and engage in conversation.

I am a grandmother and children are important and special to me. I enjoy nothing more than to hear the laughter of children. As a community we have a responsibility to watch over our youth. It is our children that will bind our community, starting from our tiny tots through to our college students. Community engagement is important to enable our youth to have a voice and to grow strong within our community, and where every child has a place to play with their mates and to be safe. These children will grow strong with good community values.

Whakaraupō is a special and vulnerable place. What happens on the land affects the marine environment. Sedimentation and water quality are affecting our marine flora and fauna now. How visitors behave within our environment has an impact on our community. Finding the balance that will respect the place that we call home yet will open the door to visitors is key. These are the messages that the community board can be promoting by working collaboratively with partners that will deliver these messages. This will require the Community Board to look at redirecting funding back into the harbour.

Tyrone Fields Labour (The People's Choice)



Engaging with people is the best bit. Social media is great for telling a story and reaching people in a fun way. But if you want to understand what the community wants, what they feel, and what fires them up then you

must talk to them. Phone calls are great for making that connection and they're not always easy but are really rewarding. There is absolutely no substitute for a face-to-face chat on the doorstep though. Every week those conversations help me to understand that – people old, people new, garages, sheds, windows, cuppas, lunches... I love it!

Protection and management of the local environment is paramount. Progress of the Whaka-Ora project, chaired by my fellow candidate Yvette, has been great. It's a huge responsibility for us all to protect Whakaraupō for future generations and I would help progress the effectiveness and continuity of this approach. I also would love to help empower the community to manage our local ecology, including areas of wayward, tricky vegetation! Sadly, some of the built heritage went with the quakes, but the heritage of our geography and environment remains and needs to be treasured.

A great reminder that this election impacts all of Banks Peninsula! Tourism on the Peninsula is essentially sharing this incredible place with people from other places. We welcome them, and the potential is huge. A friend from Koukourārata marae (Port Levy) talked of a walking trail between Peninsula-based marae. How amazing would that be? Community Board can support that but in a smart and engaged way. It is central in bringing parties together to find ways to succeed, but also in building a culture and good processes so that tourism doesn't strain infrastructure and ecology. Left hand, right hand.

The voting papers will be sent to all Lyttelton Subdivision residents on the electoral roll, beginning 24 April.

Special voting will also be available on Tuesday, 24 April.

Special voting papers will be issued during business hours – Monday to Friday – until noon on Wednesday, 16 May at the Christchurch City Council Civic Offices in Hereford Street, and Lyttelton Library and Customer Services in Canterbury Street, Lyttelton.

Voting will close at noon on Wednesday, 16 May, with a preliminary result available that day.

Final results are expected to be available on Saturday, 19 May.

Voting papers can be returned to the Electoral Officer using the pre-paid envelope provided with the papers or delivered to the Lyttelton Library and Customer Services, or the Council Civic Offices by noon on 16 May.

Article Lyttelton Review

Nursery –Open Day

Saturday last week was the first time that all members of the Lyttelton planting group were given the opportunity catch up at our community nursery in Cass Bay to see the huge number of plants (800) that have been germinated and grown-on for this year's planting in Urumau. Over the afternoon 30 people from seed collectors, seed cleaning and documenters, propagators, planters, waters and weeders came to visit and meet each other and admire the fine collection of plants. There were also members from the Banks Peninsula Community Board. And of course the local list MP Nuk Korako who provided some very informative discourse on the importance of locally sourced planting stocks, relating it to the wider meaning of whakapapa.

Dru Mason chose the occasion to let go her precious and delivered more plants to the nursery. The local landowners who had kindly permitted the collection of seed from old remnant forest were able to see what we had achieved from their seeds. The whole team just had a good chance to connect, celebrate and learn more about our local plants.

Article Planting Team Urumau



Why Seafarers Centres are Important to Me.

In a fairly recent article in the Bay Harbour News it advised readers that a meeting will be held with the Lyttelton Port Company and Christchurch Council to discuss funding for the Seafarers Centre in Lyttelton including a possible levy on visiting ships. This article brought back memories of the many times I visited Seafarers Clubs not only in my own country, Australia, but also around the world during the twenty-five years I spent in the Merchant Navy.

To many people sailing on Merchant Ships around the World may seem like a very glamorous way of earning a living but the reality is often quite different. When the ship is unable to avoid heavy weather and you find yourselves sailing through a cyclone or typhoon life can be very trying. No sleep for days on end through the violent movement of the ship and no proper meals until the weather settled down a bit. In your cabin it is chaos with anything which is not secured ending up on the deck and furniture sliding up and down. I even lost a close friend who slipped in the bathroom during a storm and was killed when he hit his head while falling over.

When I see people who are obviously part of the crew from a ship in port in Lyttelton I always go out of my way to help them. Often they are unable to speak our language as has happened to me so many times while visiting ports overseas where the local people do not speak English. It is therefore important that we all do our best to help seafarers visiting Lyttelton and remember ninety percent of what we use in our everyday lives comes in by sea.

Lyttelton Seafarers Centre - Another Funding Idea

There have been several discussions and meetings recently on how best to fund the Lyttelton Seafarers Centre. While a compulsory levy on ships visiting the Port has been suggested others in the Port do not like the idea. The following article is taken directly from Sea Breezes Magazine for November 2017 and is another method of financing a seafarers centre currently being used by the Port of Tyne in the UK.

PORT FUND WILL HELP SEAFARERS IN NEED OF HELP

A NEW fund has been launched to help ships' crew members who need welfare support while visiting the Port of Tyne.

The Port of Tyne Authority's welfare fund allows shipping lines to pay a voluntary levy each time one of their vessels arrives at the Port. The Port of

Tyne then matches the levy, contributing 50p for every 1 pound sterling collected through the welfare fund.

The optional levy is based on a ship's gross tonnage and ranges from 20 pounds sterling to 30 pounds sterling, payable on her first 10 visits to the port each calendar year.

Last year around 10,000 pounds sterling was raised by the Port's welfare fund for distribution to projects that support seafarers via the Merchant Navy Welfare Board.

The money provides funding to the principal welfare organisations that provide services to seafarers visiting the Tyne, including the Mission to Seafarers, Apostleship of the sea and Fishermans Mission all of which are dependent entirely on charitable donations.

Andrew Moffat, the Port's CEO, said "We are delighted that we have been able to work with the Merchant Navy Welfare Board and introduce a scheme that provides practical help and support to the many ships' crews.

The Fund is targeted specifically for crew members who may need some support in a variety of ways, whether that is a phone call to contact their families, get some welfare advice or provide emergency care, and we hope that it will help to make a difference"

Peter Tomlin, the Welfare Board's CEO, said "It is really important to the global economy to ensure the welfare of seafarers in ports around the world. The scheme introduced by the Port of Tyne will make a tangible difference to local charities on Tyneside that work hard to support seafarers in need". The Merchant Navy Welfare Board is now hoping to set up similar schemes in other UK Ports.

Article Ships Telegraph 2/18 April 9 2018 Clive Keightley



Port Levy Regatta Report

Although the windy conditions were a little off-putting for some, Port Levy put on a beautiful day for the Easter Saturday regatta. As guests of the marae, everyone that attended the event was made to feel very welcome. Approx 80 people turned up for the powhiri in the wharenuī with the numbers growing throughout the day. There was great participation in the waka with Te Waka Pounamu well represented, and the Easter egg hunt also proved a winner with over 400 eggs to be found! A hearty BBQ was served up for lunch.

The Ken Camp Trophy race was won by Phil Jackson in his Noelex 22. The southerly came through mid-race but this did not deter the trailer yachts and keel boats that were taking part. Willie Newman and his crew picked up a win in the waka (of all things!) and the cultural closing ceremony was a highlight of the day to many who attended. The day was made more special by having Alan Goodmanson's family on hand to present the fishing prize.

Thanks must go to the Koukourarata Marae, Issac Armstrong and Jessica Lee for helping with the junior sailing and Paddy & his Coastguard crew for attending, then helping a few family members home who were apprehensive in the rough seas. Big thanks must also go to the sponsors of the day including the Powerboat Centre, the local Community Board and Burnsco.

Beginners Guide to Local History Kia ora!

Starting on the 8th of May, Christchurch City Libraries will be offering a free six week evening programme called Beginners Guide to Local History. We will be covering how to find out about our Māori heritage, European arrivals and settlement, people and events that impacted daily life in Christchurch, and how to research the history of your house and neighbourhood. There will be diaries, historical maps and images, and stories of shenanigans! More details can be found on the Christchurch City Libraries Events page.

Lyttelton Community House (LCH) meals programme

This service provides five cooked meals a week. On Monday & Wednesday recipients will receive two hot meals (to cover Mon/Tues & Wed/Thurs). On Friday one hot meal plus a dessert is delivered. These meals are delivered between approximately 3-4pm, and cost \$8.50 each. If you are interested in this service, please get in touch with Hannah at hannah@lytteltoncommunityhouse.org.nz

Naval Point Hire

Do you have a birthday or celebration you would like to hire the wardroom for?

Naval Point would love to host your function. Please contact Marina on office@navalpoint.co.nz or call 03 328 7029 for details and availability. Discounts available to club members.

Do you have any ideas for winter functions. Let us know in our suggestion box. Our Bar Manager, Gail Waring, will be available to serve you.



Zumba Gold® Fitness

Tuesday: 1.30pm – 2.30pm, Lyttelton Recreation Centre, Lyttelton (25 Winchester Street)

Friday: 11.30am – 12.30pm, Lyttelton Recreation Centre, Lyttelton (25 Winchester Street)



Exploring Intellectual Disability Workshop

15 May IHC Community Advocacy and Birthright NZ invite you to a free workshop providing up-to-date information, resources and practical strategies. This workshop will cover: • What is (and isn't) intellectual disability? • Resources available • The current transformation of disability services in New Zealand • Strategies for families • Language and Communication • Barriers • Issues and action plans When: 10am-3pm, Tuesday 15th May 2018 Where: Meeting room 1, Christchurch Community House, 301 Tuam Street RSVP: To Vicki at Birthright NZ, by 19 April 2018. Questions: Contact Vicki at workforce@birthright.org.nz or on 04 802 5377.

Advertising in the Review

Since the inception of the Lyttelton Review we have been very generous with advertising. Any one off

advertisements for businesses have generally been published free. Advertisers are encouraged to make a donation to our volunteer organisation.

To be a permanently listed business in the directory and have articles written about your business we have a yearly membership fee of \$165 including GST. If you would like to have a yearly listing please contact us office@lytteltonharbourinfo.nz and we will forward our membership application.

Wanting to Rent

Professional couple wanting to rent 1-2 bedroom house/flat from end of JULY for 6 months

Currently living in Dunedin, Lynley Edmeades and her partner Neil, would love to live in Lyttelton while she is writer in residence at Canterbury University, and Neil takes a sabbatical to work on his book. They are a super responsible couple in their thirties who would treat your house with all the care it deserves. While they would love to bring their cat, they will understand if that is not possible.

Please contact Lynley and Neil directly on 021 044 8198, or email lynley.edmeades@otago.ac.nz

Or contact Juliet Neill on 021 032 7014

Alcohol Licence Notification changes

Instead of notifying applications in the public notice section of local newspapers, public notices will now be published on a dedicated webpage, located at ccc.govt.nz/alcohol. The webpage will be live from 16 April 2018 for all alcohol licence notices. Please note there will be a month's transition period for public notices already arranged by applicants for newspaper publication. By advertising on the same webpage each time, people will know where to go to look for licence application notices and details about public objection timelines. Public notification will still be for 15 working days, but you will be able to view on the webpage recent notices beyond that time. This is consistent with the requirements of the Sale and Supply of Alcohol Act 2012. You can still view application documents in person at Council offices. To find out more about how alcohol licence applications are publicly notified, call 941 8999 or 0800 800 169.

Computers to the Community Scheme

As a result of the Christchurch City Council's replacement programme, there are a number of desktop computers and monitors surplus to requirements. In recognising the value of community organisations, rather than

selling these computers, they are available to be gifted to not-for-profit community groups who would benefit from being able to utilise them in supporting their local community. If you would like to apply to receive some of these computers, please contact Maryanne Lomax on 941-6730 or emailing maryanne.lomax@ccc.govt.nz

Biodiversity Fund

Council has set aside \$200,000 per annum for projects that protect and enhance sites of ecological significance. Applicants can be private landowners or organisations. Up to \$40,000 a year can be available for up to 5 years, with grants covering 50% of costs: CCC Biodiversity Fund Close-off dates for applications are 1 March, 1 May and 1 December 2018.

2018/19 Strengthening Communities Fund is now open for applications

If your organisation needs funding to make things happen in your community, applications are now open for the Strengthening Communities Fund. Applications are invited from not-for profit community groups who contribute to community well-being in the areas of community, social, recreation, sports, arts, environment or heritage. Applications are accepted from Tuesday 3 April until midnight Tuesday 8 May 2018. For more information visit <https://www.ccc.govt.nz/culture-and-community/community-funding/strengthening-communities-fund/> or phone 941 8999.

Weeding Sunday

Although weeding day dawned clear on 25th March, an overnight downpour stymied our offensive on a patch of old man's beard that we wanted to target in Urumau Reserve.

Instead, we redeployed our forces and potted up some plants for the planting team. We potted up some flax, NZ juniper, Hebe, and *Coprosma robusta* (which you might see on planting days later this year).

Join us on our next weeding day on April 27 when we hope to get on to the old man's beard patch that escaped our attention this time.

We meet at 1 pm at the Foster Tce entrance to Urumau Reserve.

Bring along secateurs and a pruning saw if you have them. Alternatively, we have a couple of spares.

For more details, contact lytteltonreserves@hotmail.co.nz.

Volunteers Available

Gelita has largely finished the clean-up of our site following the fire in January. While we wait on the outcomes of the insurance assessment and feasibility study for the restart of the factory we have some staff who could be redirected to local community work - such as gardening support for local elderly residents, labour at community gardens or similar. Please contact Mary Askey via mary.askey@gelita.com

Family Legal Advice Clinic

Every Wednesday from 3:30pm until 6pm. Justice and Emergency Precinct, Level 1 (use entrance A2). The service runs as a drop in, so no appointments are necessary. This is a specialist legal advice for people with family law matters. Urgent applications can generally be drafted with clients on the night. The service is run with the support of the Christchurch Family Court and the University of Canterbury, and the Family Court registrars stay late to assist with applications that can be filed on the night. For more information phone 366 6870 or 0508 226 529.

Community Resilience Partnership Fund

This Council fund is now open to applications from community organisations seeking funds for projects that increase community participation, connectedness, and resilience. The application process requires a brief proposal – to find out more and to apply: <https://ccc.govt.nz/culture-and-community/community-funding/community-resilience-partnership-fund>

Naval Point AGM

Just a quick note to let you know the date of the AGM for Naval Point Club Lyttelton on Thursday 26 July at 7pm. We would appreciate members supporting this meeting so book the date in now. Please note: turning up does not mean you will be delegated a job, it means you are interested in the running of the club.

Grants available for Age-friendly Community projects

The Community Connects fund supports communities to become Age-friendly. Any New Zealand council, community organisation, or registered not-for-profit organisation can apply. (Non-council applications must have support from their City or District council). The fund supports projects to either start development of an Age-friendly Communities Plan, or implement an Age-friendly Community project. For more information contact Community_Connects@msd.govt.nz or click here. Applications close on 6 May 2018.

Crown/Māori Relations Kōrero mai!

Share your views on the future of the Crown/Māori relationship. The government wants to seek your views on how to rejuvenate the Crown/Māori relationship and finalise the scope and priorities of the Crown/Māori Relations portfolio with your input. Find out more online: www.justice.govt.nz/crown-maori

How to have your say:

There are 3 ways you can be involved:

- Kanohi ki te kanohi
Attend one of the hui/meetings that will be held across the country. You can find the dates and locations of the hui by visiting www.justice.govt.nz/crown-maori.
- Online
Complete the online feedback form at www.justice.govt.nz/crown-maori
- Post your ideas

Send your ideas to: Crown/Māori Relations Scope Feedback, Freepost Authority 254825, Crown/Māori Relations, PO BOX 180, Wellington.

Banks Peninsula Walking Festival

It's that time of the year when we are scouting around for guides for the festival every weekend in November. As in previous years we are calling for guides who would like to lead a walk. If you are from Lyttelton Harbour and you are keen to participate or find out more information contact Wendy Everingham wendy.everingham@extra.co.nz 021 047 6144



Book Club

Is anyone interested in joining a free daytime book club at the Recreation Centre. To be held 2nd Wednesday each month between 1 - 3pm.

1st meeting to be held on 9th May to discuss format.

Any inquiries Contact Kaye 03 3669007.

Pop Up Ping Pong

Project Lyttelton presents -

Calling all keen Lyttelton ping pong/table tennis players young and old!

Have you ever wanted to learn?

Come down to a special one off coached session for the school holidays next week with Daniel.

Thursday 26 April 10.30 - 12.30pm & 1.30 - 3.30pm.

Bats and balls provided.

Freedom Camping working group

On Wednesday, Tourism Minister Kelvin Davis announced the members of the working group that will develop solutions to freedom camping issues.

"The working group will provide me with recommendations for improving the way we manage freedom camping in New Zealand and will be made up of nine people from across local government, industry and key central government agencies. I expect the working group's recommendations to cover practical actions we can take to support councils ahead of the 2018/19 peak season, as well as any policy or regulatory changes to the freedom camping system that might be required over the longer term. The working group is expected to have their first meeting by 4 May 2018 and to report to Mr Davis by no later than 31 July 2018 with an outline of their planned work programme and any progress made up to that point." The full Terms of Reference are available at:

<http://www.mbie.govt.nz/info-services/sectors-industries/tourism/documents-image-library/freedom-camping-working-group-terms-of-reference.pdf>

Age Concern Canterbury – Positive Aging Expo

In association with Papanui High School.

Free entry and entertainment.

Monday 1 st October 2018. 9-2.30pm.

Papanui High School, Langsons Road Papanui

An invitation is extended to residents of communities in the Harbour Basin to join with a group from Lyttelton that will travel together for this event. Are you interested?

Look out for the registration forms soon to be available at:

Lyttelton Health Centre

Lyttelton Community House

Lyttelton Library

Or contact Allie McMillian 3288803 allie.allegria@xtra.co.nz



Closing Day Naval Point Club!

This weekend marks the end of the 2017-18 season, which has had a very full and sometimes hectic programme, especially since Christmas. We have been fortunate to host many National and Championship events, which include many different on water activities including sailing, waka, windsurfing and swimming. The sailing programme on Saturday will be followed by the annual prize giving, so come and join in the festivities with the sponsors, staff and vital club volunteers :)

Without the organisation and support of so many people these events would not have been possible. Organising for the 2018-2019 season will start next with hard working Ross May at the forefront, as well as the various committees and subcommittees the club never sleeps!

The Wardroom bar will be open at 3pm on Saturday 21st April and we will be supplying a light supper for all those that attend. Over the last year or two you may have noticed some different faces around the club, so we would like to make this an opportunity to introduce you to the staff and volunteers at the club, who many of you will know but some will not.

During the winter money and time will be spent on preparation for the new season, in particular the floater, which will be landed for maintenance, under the control of Gregor Bowater. The pontoon is absolutely essential to our members. It was launched in September 2002 and survived all conditions and treatment, however, it does require some TLC in order for it to continue to be an important asset to the club. We will continue to keep you all informed of the plans for this work to be completed.

Once again, a big thank you to all the supporters of Naval Point Club Lyttelton, both on and off the water, activities could not have happened without you!

Stay safe and warm during the winter months.

Article The Naval Point Club Lyttelton

Information Centre

Welcomes a New Coordinator



Diamond Harbour resident Jenny Fowler is the new coordinator of the Information Centre. In the twenty plus year history of the Centre this is the first time that the Centre won't be so Lyttelton centric and that in itself is something of note as the Centre seeks to shape a new path forward with new Chair Penny Carnaby, new coordinator, Jenny, and a host of new volunteers.

Jenny was raised in Mid-Canterbury and studied at Canterbury University. After graduating she worked as a primary school teacher in the Nelson area, then travelled overseas for several years, before returning to settle in the harbor basin. Jenny has been living in Diamond Harbour with her husband, Chris, for twenty years, so she's pretty familiar with the local scene.

Jenny's main focus has been on raising their family of three children and also working in part time teaching roles at Diamond Harbour and Heathcote Valley Schools. With only one child left at home the Information Centre role presents a new and exciting challenge for her.

Community has always been important to Jenny. In Diamond Harbour she's been active with many groups that aligned with her children growing up. Play Centre, Diamond Harbour School, Charteris Bay Yacht Club,

Diamond Harbour Rugby Club are to name a few. For herself she enjoys singing and so the Diamond Harbour Singers is a group that she's part of. "I've also been involved in the organizational side of SPRIG – Music and Sculpture on the Point. My role covered fundraising and communications". Those skills will come in handy with her new role.

The Information Centre is a new canvas for her. With the new team they will build on the existing strong foundation at the Centre, which provides a focal point for the community and visitors to our Harbour. Jenny's vision for the Centre under her leadership is "I would like to grow a strong team of volunteers who have a sense of ownership in what they are doing and are proud of the important contribution they make to our community. I also want the Centre to showcase the amazing businesses, activities, events and destinations that we are so fortunate to have here in Lyttelton Harbour."

For the short term her role is all about getting to know people, learning about how the Centre works and the places it promotes. If you'd like to meet Jenny she will be in the office every Monday 10-4pm and for two other sessions each week. Feel free to drop in or alternatively contact Jenny to make a time to catch up. If you'd like to help as a volunteer Jenny would also love to hear from you. Everyone is welcome to apply including students, part time workers and retired persons. As the Centre mainly focuses on Harbour information/activities, local people or those with an interest or connection to the area are generally well suited to be volunteers.

Jenny Fowler

Coordinator Lyttelton Harbour Information Centre
20 Oxford Street Lyttelton
328 9093
office@lytteltoninfocentre.nz

Article Lyttelton Review

Park murals 'Dcypher' Lyttelton

A new series of murals will capture the community spirit of Lyttelton within the urban landscape of a revamped skate park and playground.

The artwork is part of a \$45,000 trio of murals planned for the Oxford Street Reserve site.

The visual story will incorporate t, native plants and birds, Maori design motifs, and a Lyttelton inspired urban scene featuring a skateboarder.

All three are the work of Los Angeles-based Christchurch artist Dcypher, also known as Guy Ellis. Dcypher will be assisted in the artworks by other members of the DTR Crew, Wongi, Ikarus, and Jacob Yikes.

Lyttelton Skatepark and Playground Proposal

Initial sketches to be further developed



Wall 1 Playground



Wall 2 Skatepark



Wall 3 Skatepark



"We requested that the proposed murals reflect the history of Lyttelton and the site, and appeal directly to the youth of the area who are the primary users of the park," Christchurch City Council project manager Jon Malis says.

"The proposed concepts by Dcypher capture the aspirations that the people of Lyttelton have for these murals, in insightful and colourful designs of which the whole community can be proud."

Work will begin on the two-week project on 20 April, with evening projection and sketch up.

The murals are key elements of the \$375,000 site upgrade, which also includes extensive playground landscaping and repairs to the park's earthquake-damaged heritage walls.

An acclaimed muralist, Dcypher's work features in the Spectrum Street Art Show and several murals around Christchurch, along with international street art festivals, cityscapes, museums and high-profile advertising campaigns.

His work has also been showcased in Brazil, Dubai, New Zealand, and the United States, particularly at the Venice Beach Skate Park in California. A colourful Kiwiana-themed mural by Dcypher also adorns the Wharenui Recreation Centre in Christchurch.

Article CCC Newsline

Stop Press:

Ten lucky young people will be given the chance to attend a youth street art workshop on Saturday April 28th weather permitting. Our local CCC Recreation Advisor is helping select the lucky ten.

The workshop is being funded by the council as part of the project.

COMMEMORATIVE ANZAC DAY SERVICES

WEDNESDAY 25 APRIL 2018

'For The Fallen'

They went with songs to the battle,
they were young,
Straight of limb, true of eye, steady
and aglow.

They were staunch to the end
against odds uncounted,
They fell with their faces to the foe.
They shall grow not old, as we that
are left grow old;

Age shall not weary them, nor the
years condemn.

At the going down of the sun and in
the morning

We will remember them.

Lest We Forget.

AKAROA

11:00am

Returned Servicemen and Women and members of the public are invited to assemble at the Akaroa Fire Station and then march to the War Memorial.

11:30am

The Service will be held at the War Memorial. If wet the Service will be held in The Gaiety hall, Rue Jolie, Akaroa.

LYTTELTON

9:45 am

Returned Servicemen and Women and members of the public are invited to assemble at the corner of Oxford Street and London Street, to march to the corner of London and Canterbury Streets where a service will be held at 10.00am.

LITTLE RIVER

9:30am

Service at the Community Centre Western Valley Road followed by a march to the Memorial Gates.



Beca Heritage Week is returning from 12 - 22 October!

Heritage Week is an umbrella festival that brings together many community events and activities to help us celebrate and learn about Christchurch's history, events, places and pastimes.

Strength from Struggle - Remembering our courageous communities

This year there are some significant anniversaries in terms of large scale national and international events including:

- 125 years since women's suffrage achieved in New Zealand
- 100 years since the World War I armistice
- 100 years since the 1918 influenza pandemic

The theme for Beca Heritage Week 2018 reflects these significant anniversaries which were hard won or hard fought struggles in world and New Zealand history. These anniversaries present an opportunity to remember the challenges faced by many communities in the past, commemorate the loss, courage and endurance of those who came before us, and celebrate their victories.

Do you have a great idea for a Beca Heritage Week event?

We're calling out to all community groups, businesses and individuals who are interested in holding events during the festival. On Tuesday 8 May, join us as we discuss this year's theme and answer any questions you may have about being involved.

When: Tuesday 8 May, 5.30–6.30pm

Where: Christchurch City Council Civic Building
53 Hereford Street
Christchurch (enter from Hereford Street)

If you are unable to attend, you can view the application information at ccc.govt.nz/heritageweek, after the meeting.

For any enquiries, please email heritage@ccc.govt.nz

What is the Maori Name for greenstone?

Pounamu a highly prized stone used by Maori to make chisels for whakairo (carving) weaponry and taonga (treasures). Pounamu also known as greenstone was also used to show status and authority.





The Little Gems Project for Cholmondeley

Cholmondeley Children's Centre is proud to announce its first annual fundraising evening of Denim, Diamonds and Dancing in support of The Little Gems Project.

"The Little Gems Project is based on the concept that Cholmondeley believes there is a diamond within all of us. So please help us bring out the inner sparkle in every precious Canterbury child - our Little Gems," says Cholmondeley's CEO Arron Perriam.

Cholmondeley Children's Centre will host the fundraising event at Sixty6 on Peterborough on Saturday, 26 May from 7.30pm. The evening will be presented by television host, Jason Gunn and includes: live music, top-class entertainment, delicious canapés, plenty of dancing, and a live auction.

The children's charity, based in Governors bay is a non-profit organisation which provides short-term emergency and planned respite care and education to children aged 3-12 years whose families are experiencing genuine stress or crisis.

"As a charitable organisation that is 80 percent community funded, we rely on the generosity of individuals and businesses. Proceeds from the fundraising evening will be used to continue our vital service and to support our Little Gems and their families. We encourage the people of Canterbury to dig out their denim and put on some sparkle for this amazing cause," says Arron Perriam.

Tickets can be purchased online at www.littlegems.org.nz and start from \$138 per person.

For all enquiries regarding The Little Gems Project, please contact Fundraising & Marketing Manager, Tanya Cooke on tanya@cholmondeley.org.nz or 0274473024



SEWING FAIRY

Sewing classes are back

Youth classes suitable for any age and skill level
...adults welcome too!

Focus is upon recycling and creativity as well as developing hand and machine sewing skills. Everyone can work at their own speed with help on hand.

Starting: Tuesday 8th May 2018 for 8 weeks.

At: Community board rooms, Lyttelton.
3.15-4.10 pm and 4.15-5.10pm depending upon demand.

If further interest will deliver an evening class.

Cost \$90 which includes all fabrics and extras needed for sessions.

If you are interested or want to book a place please contact Ruth: 021 2593 086 or email above address.

Don't ditch it fix it!

Professional Couple Wanting To Rent 1-2 Bedroom House/Flat

From end of JULY for 6 months

Currently living in Dunedin, Lynley Edmeades and her partner Neil, would love to live in Lyttelton while she is writer in residence at Canterbury University, and Neil takes a sabbatical to work on his book. They are a super responsible couple in their thirties who would treat your house with all the care it deserves. While they would love to bring their cat, they will understand if that is not possible.

Please contact Lynley and Neil directly on 021 044 8198, or email lynley.edmeades@otago.ac.nz

Or contact Juliet Neill on 021 032 7014

WEA The Canterbury Workers Educational Association
Roopu Kaimahi Matauranga O Waitaha

Dr Susan Healy, author of "Nga Puhi Speaks"

which was written after Nga Puhi gave their evidence to the Waitangi Tribunal

presenting a workshop on

Sharpening our awareness of what happened at Waitangi on 6th February 1840.



AT THE WEA, 59 GLOUCESTER STREET

Thursday 24th May 5-9 pm

Light meal provided.

REGISTRATION REQUIRED. \$5 PER PERSON. MORE
DETAIL AND RSVP AT WWW.CWEA.ORG.NZ OR CALL
03 3660285

Craft Fair

1st Monday June
Queen's Birthday

Redcliffs Mt Pleasant Bowling Club

9 James St. Redcliffs

10am. to 2pm.

\$ 25 per stall space (includes 1 chair)

we offer a warm environment with easy access

Amy Caddie 3843984
amydavid.caddie@gmail.com

To make a booking
redcliffsbowls@xtra.co.nz

Lyttelton: Around the World and Back Again. By Duncan Wilcox

When did you first begin living in Lyttelton? What brought you here initially?

I first came to New Zealand in 1989 as a tourist & an avid fly fisherman. I drove from Auckland to Queenstown and saw lots of bits in between & fished as much as I could and fell in love with New Zealand. I knew that someday I would live here, it was simply a question of when. Over the next decade or so I visited numerous times to fly fish & catch up with friends. In 1996 my good friend Shelley McCabe and I set off on a world-wide tiki tour and in a very zig zag manner I arrived back in New Zealand to spend 6 months (in 1997), catching most of the trout season. I decided that I wanted to stay, and sent out 300+ CVs and got only 1 response from KPMG, who brought me in for an interview only to tell me I'd never get a job. The reasons being: (1) I would be an immigrant and I would most likely get homesick & go home and (2) I was overqualified. So without a job, it was back to the US to wait for another day...then 9/11 happened & it kicked me into high gear to ditch the job & get on with some of my dreams. I had 4 big dreams - to start a restaurant (London Street in Lyttelton), to have an actual home & be part of a community (had rented my whole life), get a dog (Billie the Jack Russell) and fly fish as much of New Zealand as possible.

How long did you stay and what is your history with the place?

I arrived in Lyttelton to live in 2002 but I have visited or stayed in Lyttelton on every trip that I have made to New Zealand. Lyttelton and the Banks Peninsula are by far the best part of Christchurch hands down. As I said above I had 4 big dreams and I am happy to say they have all come true. The restaurant was my biggest hurdle and it was a struggle to get it off the ground as my timing could not have been worse, arriving in the midst of a building boom. A 100+ year old building was not at the top of any builder's list but the silver lining to the delay was I got involved with Project Lyttelton and helped to start the Lyttelton Farmers Market. That project kept me busy & off the streets until construction on London Street got underway. I was very proud of London Street - it was everything I'd dreamt it could be and more except a financial success, which is why I decided to close it down.

Where were you in the in between years?

In 2008 Alex moved to Melbourne and in 2009 we (Billie & I remained behind until I could finalise the sale of London Street and the building) joined her to have what we called a 'cultural sabbatical' - a little bit of time living in the Big Smoke. We loved Melbourne & Victoria - it was a huge challenge every week not to find something to do, but to decide, amongst all the choice, what to do. In any direction you might head from Melbourne, you had stunning choices whether it be to visit some vineyards in the Yarra Valley or head to Daylesford for a gourmet weekend or hike the Great Ocean Road or head to our favourite place, the Mornington Peninsula for a spectacular day at uncrowded beaches or a tasting at one of the wineries. Before we left Australia for the UK we took a 2 month campervan trip from Melbourne up the East Coast to Sydney, then to all the way to Port Douglas, across to Darwin & down through the Red Centre to the Barossa & then home to Melbourne. A total of 14,000+ kilometres and we came back with one firm thought - we'd made the right choice and were very lucky to have lived in the state of Victoria. We arrived in the UK in August 2012 (I had the wrong paperwork so had to go to the US for 3 months) and settled into the wee village of Seaton, Devon. The best parts of Seaton were: (a) it was on the coast and (b) it was an 1.5 hours drive to beautiful Dartmoor National Park where I could get my fly fishing & camping fix. While in Seaton we (Billie too) decided to do the Coast to Coast walk (also called Wainwright's Walk) from Yorkshire to the Lake District - a 310 kilometre tramp that took us 17 days. After that we decided we needed a change of scenery from Seaton, so we moved to Frome, Somerset which has lots of echoes of Lyttelton - a very good sense of community and lots going on as it is a 'transition town' with lots of grassroots community projects that aim to increase self-sufficiency. We thought we'd be in the UK for a little more than a year, but after 2.5 years it was time to set sail for Spain. We knew we wanted to live in Northern Spain, specifically the Basque Country, but we were not certain exactly where. San Sebastián was high on our list but in April 2013 we did a reconnaissance trip and as much as we loved San Sebastián, it was a wee bit too busy & bussleing. So on a lark we took a bus for a day out in the fishing village of Hondarribia, across the River Bidasoa from France. And it was love at first sight (or bite for the pintxos) - it was perfect. Everything was right at our doorstep: in 5 minutes you could be in the Marina District wolfing down pinxtos & glasses of vino, or hike up the hills to Jaizkibel & along the rugged coast or cross the river to the French beach @ Hendaye or take a 30 minute bus into San

Sebastián for a big night out. Hondarribia kicks above its weight whether you are talking about its annual Blues Festival to the plethora of other festivals that seemed to happen almost weekly to its regatta races.

Why did you return?

Well I guess the short answer is that I feel Lyttelton is my home, in all the good senses of that word. We enjoyed immensely our time away as it was a wee bit of an adventure and all the places where we lived were special in their own unique way: Melbourne (the San Francisco of Australia) with a hot food & wine & culture scene that knocks your pants off; the UK with its history & culture, wee country villages & stunning scenery; and last but not least Spain, which I can say without much hesitation was our favourite. We went there to learn Spanish (which we did) but it was so much more than that in the end. We were not sure we'd even stay 6 months but we stayed 2 years and jumped head first into the Spanish & Basque cultures and we left with a very warm Spanish glow and lots of good friends.

What's so special about Lyttelton that you have chosen to make this home again?

I guess the most special facet to me is the great sense of community. I grew up in a small town that was about the same size as Lyttelton, with the same neighborly feel but after uni I moved to New York. I lived there for over 10 years and then moved to California & San Francisco. It was, for the most part, an anonymous lifestyle blending into the large cities but I wanted to get back to a real community again. We did talk about staying in Spain but we felt that even if we stayed for 10-15 years, even if we spoke perfect Spanish (not ever Basque!) we'd still not be part of the community. We have travelled a lot, not just overseas, but all around New Zealand and Lyttelton is hard to beat or find any other place like it.

What's changed and is it what you imagined?

The phrase that keeps springing up is "same, same but different"...it is great to come back & see the many familiar faces we left behind as you almost achieve instant assimilation and we have had such a warm welcome which helped to ease the initial shock. One of the biggest changes I have noticed are the kids - when I left I could rub the tops of their heads, now I have to look up to some of them ;-). But really to me Lyttelton seems to be doing just fine in relation to its big sister Christchurch and I think that comes back to community. I know some changes are not pleasing some people but that reaction seems par for the course - many people did not like the Farmers Market when it started (probably still do not) but it has been a great booster for Lyttelton.

By Duncan Wilcox



Events

WEDNESDAY APRIL 25TH

Anzac Day 10am
9.45 Service, Albion Square

Lyttelton Arms 5-7pm
Happy Hour

Lyttelton Arts Factory LAF 7.30pm
Spoonface Steinberg & The Ballad of Paragon Station

THURSDAY APRIL 26TH

Lyttelton Arms 5-7pm
Happy Hour

Lyttelton Club 5-6 7-8pm
Happy Hour

Lyttelton Arts Factory LAF 7.30pm
Spoonface Steinberg & The Ballad of Paragon Station

Wunder Bar 7pm
Comedy Night

FRIDAY APRIL 27TH

Lyttelton Arms 5-7pm
Happy Hour

Lyttelton Club 4-6pm
Happy Hour

Lyttelton Coffee Company
Hans Pucket NZ Debut Album

Wunder Bar 7pm
Graeme James

SATURDAY APRIL 28TH

Lyttelton Arms 8.45pm
Happy Hour

Lyttelton's Retro Art and Craft Bazaar 9-1pm

Lyttelton Crafts & Treasure 9-1pm
Collets Corner

Lyttelton Farmers Market 10-1pm

SUNDAY APRIL 29TH

Freemans 3.30-6.30pm
Carmel Courtney and Friends

TUESDAY MAY 1ST

Lyttelton Club 7pm
Evening Housie

Wunder Bar 7.30pm
Open mic and showcase

WEDNESDAY MAY 2ND

Lyttelton Arms 5-7pm
Happy Hour

THURSDAY MAY 3RD

Lyttelton Arms 5-7pm
Happy Hour

Lyttelton Club 5-6 7-8pm
Happy Hour

FRIDAY MAY 4TH

Lyttelton Arms 5-7pm
Happy Hour plus Joker Jackpot

Lyttelton Club 4-6pm
Happy Hour

SATURDAY MAY 5TH

Ferrymead Night Market 5-9pm
Happy Hour

Lyttelton Arms 5-7pm
Happy Hour

Lyttelton's Retro Art and Craft Bazaar 9-1pm

Lyttelton Crafts & Treasure 9-1pm
Collets Corner

Lyttelton Farmers Market 10-1pm

SUNDAY MAY 6TH

Lyttelton Arms 5-7pm
Happy Hour

Freemans 3.30-6.30pm
Carmel Courtney and Friends

Walking Tour 10am and 2pm
Underground Archaeology

COMING UP:**NZ International Jazz @ Blues Festival**

LAF - Richard Till's Country Eats featuring The Eastern - Friday May 25 @26 7pm

The Revolver Club June 1 @ 2 Lyttelton Arts Factory

A night of Cabaret starring a selection of the best acts in the country including the three headed entertainment monster from wellington Laser Kiwi and world class aerialist Jenny Ritchie from Swiss Nouveau Cirque. As well as these exotic oddities we have the crème de la crème of Christchurch cabaret including comedy wordsmith El Jaguar and the show creators Pascal Ackerman and Shay Horay playing the ring leader of this mad house of cohorts as "Richard Rhythm".

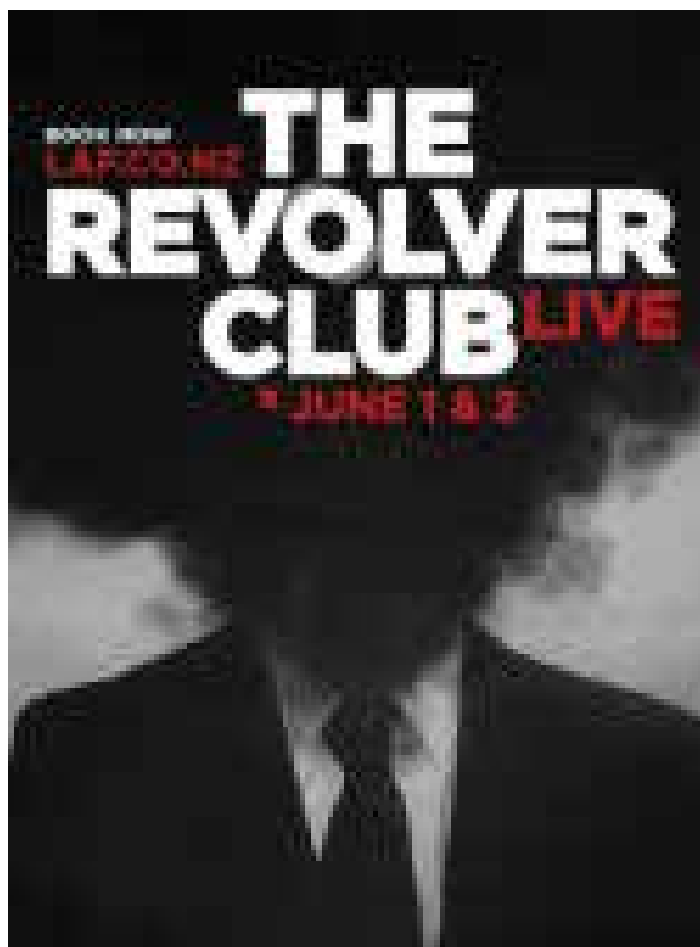
It's a world Class show and Revolver Club is undoubtedly going to be one of the best nights out you ever had. What was once The Lyttelton Arts Factory Cabaret has now been reinvented as the Revolver experience.

You will wish you had eyes in the back of your head to catch all the antics. You will wanna come twice (if you know what I mean) to see this night of Aerial Circus, Comedy and unforgettable cabaret magic. Put it this way the entertainment bar is about to be lifted. Join the CLUB - why not take a double dose and come to the late night as well because we are making history this time round at the Revolver.

DOORS OPEN 40 minutes before the show - arrive early to grab the best seats because this show is GENERAL ADMISSION!

Ferrymead Night Market.

The night market is on the first Saturday of the month 5-9pm with stalls, food trucks, bouncy castle, entertainment and Vulcan Railcar and tram rides and more. We have two stall sites available free of charge for not-for-profit groups to do an information or fundraising stall. Contact the co-ordinator for more information on info@ferrymead.org.nz or 384 1970. Check out the facebook page at <https://www.facebook.com/ferrymeadnightmarket/> Where: Ferrymead Heritage Park, 50 Ferrymead Park Drive, Heathcote

Festival of Lights Street Party Friday June 29th**GALLERIES:****STODDART COTTAGE GALLERY
DIAMOND HARBOUR:**

The Diamond Harbour Camera Club is holding an exhibition of members photographs at Stoddart Cottage from Friday the 6th to Sunday the 29 April. A wide range of photographs will be on display and residents of the local community and visitors to Diamond Harbour alike are invited to view the images taken by club members on DSLR, point and shoot and even cell phone cameras. Visitors can purchase any photograph that takes their fancy at a reasonable price.

Community Activities in and around the Harbour this Week

MONDAY

Community Choir

7.30pm Union Chapel, Winchester Street, Lyttelton.
All welcome. Jillie 021 152 8068

Diamond Harbour Yoga

6.30pm - 8pm
General Class, Diamond Harbour Rugby Rooms

TUESDAY

Community House

Shared Lunch 12.00pm 7 Dublin Street
Make new friends

Diamond Harbour Yoga

6am - 7am
Early Bird Class
Diamond Harbour Stage Rooms

Lyttelton Library Storytimes

11.00-11.30am

Lyttelton Yoga

9.30am - 10.45am
6.30pm - 8pm, Scouts Den Lyttelton
Contact Rebecca Boot 021 071 0336

Diamond Harbour Bridge Club

1.20pm for 1.30pm start
Diamond Harbour Football Club Rooms. \$4 table
For more information call 329 4868 or 329 4149

Lyttelton St John Youth Division

6.00pm St John Ambulance Station
52 London St, Lyttelton

St Joseph the Worker R.C.Church

9am Mass 21 Exeter Street, Lyttelton
All Welcome More information call 384 1600

WEDNESDAY

Diamond Harbour Bridge Club

Bowling Club Rooms. All welcome
6.40pm for a 6.50 start
Partner finder - Carolyn Crawl. Ph 329 4684

Diamond Harbour Singers

7.30 - 9.00pm
Every Wednesday in Stage Room of Community Hall. All welcome. Contact Margie 329 3331

Diamond Harbour Yoga

6am - 7am
Early Bird Class
Diamond Harbour Stage Rooms

Lyttelton Cubs

6.30pm
Contact Mark Brabyn 027 281 6180

Lyttelton Garage Sale

10.30am 54a Oxford Street, Lyttelton
Second Hand Bargains and more.

Lyttelton Harbour Fruit and Vegetable Collective

Trading between 12.30 and 2.45pm
at the Lyttelton Recreation Centre, 25 Winchester Street Lyttelton
Contact Jill Larking for more info 027 237 4960

Lyttelton Library Wednesdays Knit and Yarn

10.00-12.00pm

Lyttelton Play Group

Lyttelton Playgroup
At Kidsfirst Lyttelton
12.30pm- 2.30pm
33 Winchester St Lyttelton
Call 03 328 8689 for more information

Harbour Yoga Vinyasa

6pm-7.15pm. 021 882 403
Gentle Class, Trinity Hall

THURSDAY

Community House Flat Walking Group.

10am
Contact Hannah Sylvester. Ph: 741 1427

Diamond Harbour Yoga

6am - 7am Early Bird Class
Diamond Harbour Stage Rooms

Governors Bay Volunteer Fire Brigade

7.00pm Governors Bay Fire Station
Weekly Training, New Members Welcome

Lyttelton Garage Sale

10.30am 54a Oxford Street, Lyttelton
Second Hand Bargains and more.

Lyttelton Volunteer Fire Brigade

7.00pm Lyttelton Fire Station
Weekly Training, New Members Welcome

Community Activities in and around the Harbour this Month

FRIDAY

Diamond Harbour Yoga

6am - 7am
Gentle Class
Diamond Harbour Rugby Rooms

Lyttelton Garage Sale

10.30am 54a Oxford Street,
Lyttelton Second Hand Bargains and more.

Lyttelton Library Fridays Babytimes

10.30-11.00am

Lyttelton Yoga

9.30am - 10.45am
Scouts Den Lyttelton
Contact Rebecca Boot 021 071 0336

SATURDAY

Lyttelton Farmers Market

10.00am London Street,
Lyttelton Fresh produce, Live Music, Buskers and More

Lyttelton Garage Sale

10.00am 54a Oxford Street, Lyttelton
Second Hand Bargains and more.

Lyttelton Harbour Bazaar Market

10.00am No 6 London St. Artists, Bric a Brac and More

SUNDAY

St Saviour's at Holy Trinity

17 Winchester Street
10.00am Service with Holy Communion
2nd Sunday of every month only
Port Hills Uniting Church Service
10am Sunday Worship. All Welcome

GROUPS

Banks Peninsula Community Board

1pm Second Monday Each Month
Meetings Open to the Public

Bay Harbour Toastmasters

6.30pm. Every 2nd and 4th Wednesday of the month
Lyttelton Community Board Room, 25 Canterbury St
Contact: Jann Meehan, 021 263 1040

Diamond Harbour Civil Defence

7.00pm Third Wednesday of the month.
Community Church Diamond Harbour
Contact: Wendy Coles 0211541434

Governors Bay Civil Defence

7.00pm Third Wednesday of the month.
Governors Bay Fire Station Contact
Contact: Ian Palmer 3299 160

Lyttelton Harbour Business Association

Networking Meeting 9.30-10.30
Fat Tony's, 17 London St
More Info call 021 027 05450

Lyttelton Museum Historical Society

Contact Wendy McKay
info@lytteltonmuseum.co.nz

Lyttelton Netball Club

Contact Flo McGregor flomac@xtra.co.nz

Lyttelton Rugby Club

For details visit the club Facebook Page or contact
the club's Rugby Manager
Nathan.mauger@gmail.com 021 111 6069

Little Ship Club Canterbury

We meet on the 3rd Thursday of the month usually
at Naval Point Club Lyttelton from 7.00pm. The club
has regular guest speakers and undertakes a large
range of activities that increase the knowledge and
skills and enjoyment of its members and for the
benefit of yachting generally. All welcome
www.littleshipclubcanterbury.wordpress.com

Lyttelton Time Bank

1-4pm Wednesday, 10-4pm Thursday, 1-4pm Friday
Lyttelton Recreation Centre 25 Winchester St Lyttelton
328 9243 www.lyttelton.net.nz

Lyttelton Toy Library

Located at the Lyttelton Rec Centre Squash Court
25 Winchester St. Open each fortnight on Saturday
morning 10-12 noon. For more information
see Facebook Lyttelton Toy Library or email
lytteltontoylibrary@gmail.com or
call Helen 021 075 4826

Naval Point Old Salts Lunch

The Old Salts Lunch is being held on the 2nd
Tuesday of every 2nd month with the next one being
held next Tuesday, 10th February starting @ 12:00
with 2 course lunch commencing @ 12:45.
Contact Barry Bowater 329 4828 or 0272743520

Narcotics Anonymous Lyttelton Meeting

6:30 Monday Community House. 5 Dublin St.
www.nzna.org

St Joseph the Worker R.C.Church

5.30pm Mass 3rd Sunday of the month. Parish House
21 Exeter Street Lyttelton. Ph: 384 1600

PLACES TO STAY

B@B Settlers Retreat 153 Main Road, Governors Bay	021 186 3220 021 144 2979	thackergj@slingshot.co.nz Hosts: John and Gaynor Thacker
Black Kiwi Apartment, Reserve Terrace, Lyttelton	022 0541954	blackkiwibnb@gmail.com Host: Sasha
Dockside Accommodation 22 Sumner Road, Lyttelton	021 152 3083	lytteltonaccommodation.co.nz
Governors Bay Bed and Breakfast Governors Bay Road, Governors Bay	03 329 9727	gbbedandbreakfast.co.nz Host: Eva
Governors Bay Hotel 52 Main Road, Governors Bay	03 329 9433 021 611 820	governorsbayhotel.co.nz Host: Jeremy and Clare
Harbour Lodge 1 Selwyn Road, Lyttelton	027 242 7886	info@harbourlodge.co.nz www.harbourlodge.co.nz
Little River Camping Ground 287 Okuti Valley, Little River	03 325 1014 021 611 820	littlerivercampground.co.nz Host: Marcus
Orton Bradley Park Camper Van Stay Marine Drive, Charteris Bay	03 329 4730	ortonbradley.co.nz Host: Ian
The Rookery 9 Ross Terrace, Lyttelton	03 328 8038	therookery.co.nz Host: Rene and Angus

EAT, DRINK, DINE

Dark Star Ale House and Cafe Waipapa Avenue Diamond Harbour	03 329 3245	darkstarbrewing@yahoo.com Host: Donna and Martin
Fishermans Wharf Norwich Quay, Lyttelton	03 328 7530	www.fishermanswharf.co.nz Host: PJ
Lyttelton Top Club 21 Dublin Street, Lyttelton	03 328 8740	www.lytteltontopclub.co.nz
Roots Restaurant 8 London Street, Lyttelton	03 328 7658	rootsrestaurant.co.nz Meet: Giulio and Christy

THINGS TO DO

Black Cat Cruises | Quail Island Adventure
B-Jetty, Lyttelton Wharf [Below Oxford Street]

03 328 9078
0800 436 574

blackcat.co.nz

Christchurch Gondola
10 Bridle path Road, Heathcote valley

03 384 0310

welcomeaboard.co.nz

International Antarctic Centre
38 Orchard Road, Christchurch Airport

0508 736 4846

iceberg.co.nz

Jack Tar Sailing
Dampier Bay Marina, Lyttelton

03 389 9259
027 435 5239

jacktarsailing.co.nz
Skipper: Mike Rossouw

Orton Bradley Park
Marine Drive, Charteris Bay

03 329 4730

ortonbradley.co.nz

Naval Point Club
Our Ocean Water Sports Club

03 328 7029
027 379 9212

www.navalpoint.co.nz

LOCAL EXPORTS

Lyttelsoft
Specialising in Accounting Software

03 328 8671

lyttelsoft.co.nz
Meet: Penny Mercer

Real Homes New Zealand Limited
PO Box 94, Lyttelton

03 390 3393
021 224 6637

realhomes.co.nz
Real Estate Agent: Lynnette Baird

Saunders & Co
1063 Ferry Road, Ferrymead

03 940 2435
022 133 6963

saunders.co.nz

HEALTH, BEAUTY, FITNESS

Honey Comb
34 London Street Lyttelton

03 328 8859

honeycombhair@extra.co.nz
or see our facebook page

Lyttelton Health Centre
18 Oxford Street Lyttelton

328 7309

www.lytteltonhealthcentre.co.nz

NOW

WEEKDAYS 10-4

RECREATION CENTRE

LYTELTON

POPUP

PING



PONG

free