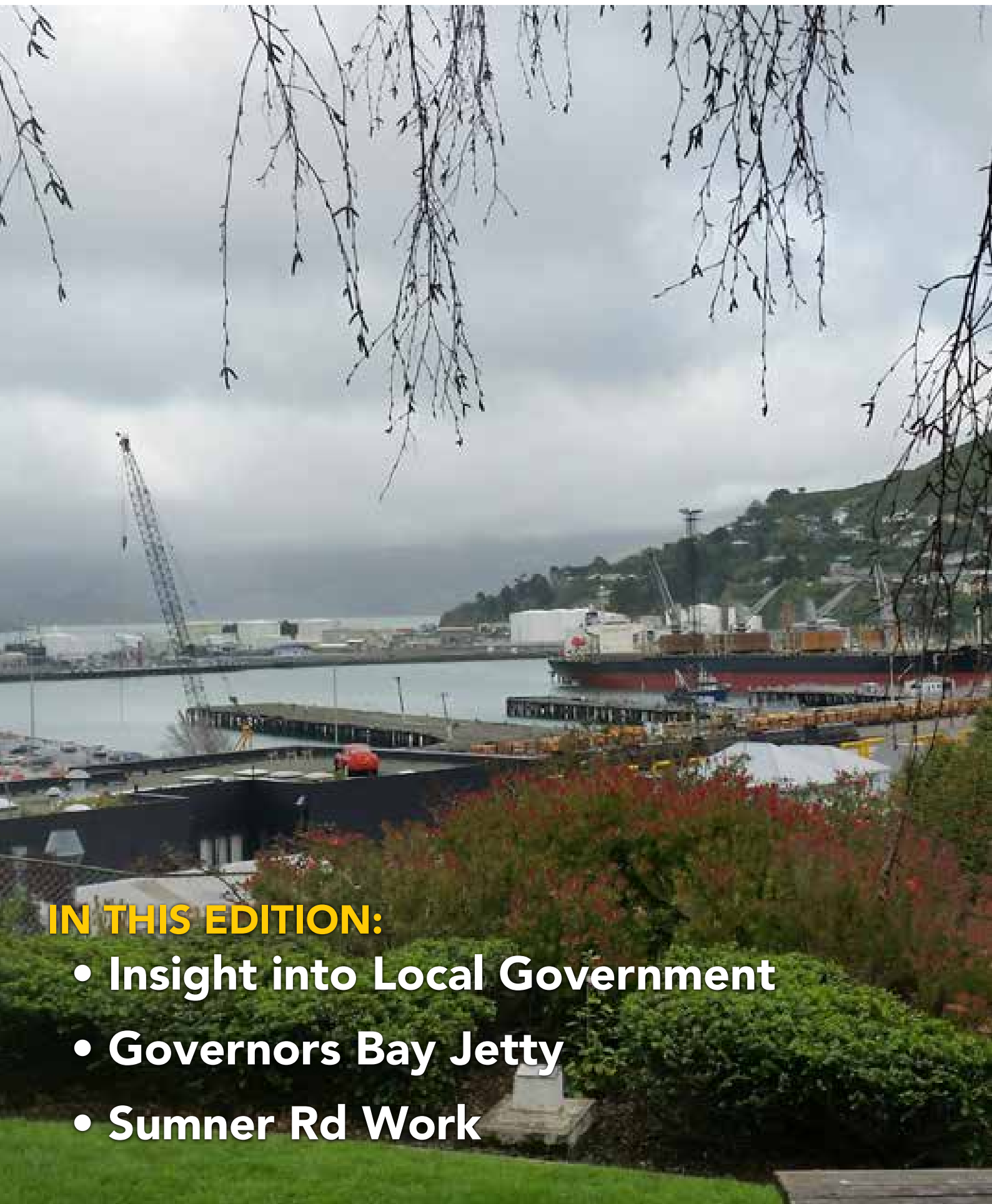


Next issue date: 4<sup>th</sup> October

# LYTTELTON REVIEW

October 2016 • Issue: 175

PURAU • DIAMOND HARBOUR • CHURCH BAY • CHARTERIS BAY • GOVERNORS BAY • RAPA K I • CASS BAY • CORSAIR BAY • LYTTELTON



## IN THIS EDITION:

- Insight into Local Government
- Governors Bay Jetty
- Sumner Rd Work

Next Issue print date: 18th October 2016.  
Content Deadline: 14th October 2016.

## Review Creators

Lyttelton Harbour Review is a 100% voluntary community newsletter initiative developed after the February 2011 earthquake. It's a Lyttelton Harbour Information Centre initiative produced by Chairperson Wendy Everingham and Committee Member Jenny-Lee Love.

The objective of the Lyttelton Harbour Review is to help keep local residents informed with what is going on in the wider Lyttelton Harbour community. Of course the success of the Lyttelton Harbour Review could not be possible without the ongoing support and enthusiasm from the wider community.

A big thank you goes out to everyone who sends information; is willing to be interviewed or lets us know what might be happening in the neighbourhood. The Lyttelton Harbour Review project would not be possible without you all.

If you have an event, topic, sport announcement, fundraiser or cause that you would like to share with the harbour community, then Wendy or Jenny-Lee would love to hear from you:

Wendy Everingham  
Office: 328 9093  
Mobile: 021 047 6144  
Email: [infocentre@lyttelton.net.nz](mailto:infocentre@lyttelton.net.nz)  
Content Deadline: 5pm Friday

Jenny-Lee Love  
Email: [lytteltonreview328@gmail.com](mailto:lytteltonreview328@gmail.com)

Subscribe to the Review:

Email either Wendy or Jenny-Lee with the words "Subscribe Me" in the subject line and the Lyttelton Harbour Review will be delivered to your inbox.

In 2016 the Lyttelton Harbour Review is produced fortnightly. Any important information between times will be emailed as a Lyttel Broadcast if necessary.

Hard Copies of the Review are available at:

Council Service Centre  
Fat Tony's  
Lyttelton Bakery  
Leslies Bookshop  
Lyttelton Community House  
Lyttelton Harbour Information Centre  
Lyttelton Library  
Lyttelton Top Club

Back Copies Available to Download:  
[www.lytteltonharbour.info](http://www.lytteltonharbour.info)



## Lyttelton's Community Civil Defence, Networking

Much of the work of Community Civil Defence is knowing who to contact and who to work with in an emergency. Our small local team recently visited Christine Wilson at Community House. The team has a special relationship with Community House. In the event of an emergency large or small Community House has committed to cook for anyone in need and to provide support for elderly and vulnerable people in our area.

Our teams philosophy is - know our potential partners and then if an emergency situation happens we already know each other and how to work together. Consequently rather than training exercises we spend more time networking than anything else. Our core group is John Howie, Helen McCaughan, Abbie Montgomery, Philipa Hay, (in photo) Wendy Everingham, Rene McPherson and Lesley Milan.

Our Community Civil Defence team is based at the Lyttelton Information Centre, with support from the Christchurch City Council at the Service Centre in London Street and Community House in Dublin Street. The Timebank is a key link in the network as well. We intend to operate in this small scale model unless we experience a very big event again.

ONLY In the event of a declared emergency the Recreation Centre at 25 Winchester Street would become a Welfare Centre.

Your best preparation as residents is to have your emergency plans organised and know your immediate neighbours well.

To find out more about us: contact Wendy Everingham Lyttelton Information Centre 328 9093 or Philipa Hay at the Council 941 8999

Article Lyttelton Community Civil Defence

# Insight into Local Government

## Ann Jolliffe Retires



After twenty four years of community service Lyttelton resident Ann Jolliffe is retiring from local body politics. Serving as both a Councillor and Community Board Member under the former Banks Peninsula District Council and a Community Board Member for the Christchurch City Council

she's seen lots of comings and goings over the years.

"The highlights both politically and personally are too numerous to mention. It has been an enjoyable job and the characters I have come in contact with over the years have been numerous" she said.

One of the biggest issues during her time as a local body politician was the amalgamation between the former council and Christchurch City. "This issue brought out lots of angst and many surprising views in the community" she said.

For herself personally the amalgamation brought a complete change of operation and the way council work was done changed significantly. "Before council tasks were face to face and we talked things out. Now it's more likely to be emails and pieces of paper. Everything is too big now"

Looking back she missed the days when elected representatives and staff all knew one another and things were more like a big family. She reflected on governance over the time she's been involved. "I

think the older style community boards were more effective, I'm not quite so sure now. Everything seems to evolve around staff recommendations and you feel more locked into a process".

In many ways she preferred being a Community Board member than when she was a councillor. "I jumped up to the next level because at the time I thought to myself I'm just as capable of making those decisions around the council table as the people who were sitting there so why not give it a go".

Into the future she hopes that the new Community Board is given more power.

"Let's face it there are so many great people who are more than capable of making decisions. Community Boards are the grass roots of democracy. Decision making has been going the wrong way for too long. It's time for the bottom to be more influential on the top".

On the newly elected Banks Peninsula Community Board she feels having only one board is a retrograde step. "I believe there is so much ground to be made up between the various communities that it will take members a while to get a handle on the area. Lyttelton is more an urban area with issues very different to the rural areas of the Peninsula. On top of that just the sheer amount of time involved getting around the district will add to the workload and with decreased remuneration this isn't an ideal situation."

Retiring she can leave the worries of how the new system will work to others! For Ann leaving community life will mean more time for herself and husband. "Paul will be 90 in a couple of weeks". Married for 63 years her only desire is to enjoy each day at a time. "At this stage of life you don't know what's around the corner so we plan on enjoying the time we have left together".

Article Lyttelton Information Centre

**Don't forget to vote in the Local Elections. Whilst we are not voting for a Councillor and Community Board members you are electing a Mayor, four Environment Canterbury Members and seven board members for the Canterbury District Health Board.**

**Post your voting papers no later than Wednesday October 5th or hand deliver them to the Christchurch City Council by 12 noon Saturday October 9th 2016.**



## Spring Festival of Change, Fruit and Veg Collective

The Community Garden Team were encouraging Fruit and Vegetable Co-Op members to make a delicious vegetable soup from the veggies supplied last Wednesday. Jacqueline Newbound and Sue-Ellen Sandilands made soup for everyone who collected their precious bags of vegetables. They hope by tempting shoppers with their delicious food ideas people will be inspired to create food they might not have eaten before.

For four weeks they will tempt everyone with their delicious ideas. Jacqueline said "we hope to inspire people to cook more and to show them that they can experiment. You don't need to follow a recipe, just a technique" she said. "This is all about cooking with what you have" she said.

Shoppers were certainly pleasantly surprised to get a lovely hot cup of soup

For the next three weeks they will be at the veggie collection point at the Garage Sale 54a Oxford Street Lyttelton between 12.30 and 2.30pm on Wednesday.

This scheme is open to all Harbour Basin residents. Vegetables need to be purchased a week in advance and you can choose between a \$6 or \$12 pack. Vegetables are purchased on our behalf by the Affordable Fruit and Vegetable Group in Linwood and come from the wholesale market. They are purchased the day before delivery so are really fresh. If you are interested to sign up, visit the team at the truck in the Garage Sale driveway or pop into the Lyttelton Information Centre.

### **This is what you can expect to get for \$12!**

The photo on the top left is the amount of produce that our customers received on 31<sup>st</sup> August, while the photo on the bottom left is the approximate amount of produce our customers would have received if they had taken their \$12 into one of the local supermarkets and did their purchasing there on 31<sup>st</sup> August.

Thanks to **Time2shine Photography** (027 885 9009) for the photos

Article Lyttelton Information Centre





# Governors Bay jetty to be sold for \$1



Christchurch City Council plans to sell the dilapidated Governors Bay jetty for a \$1 so that a group set up to restore it can get on with the job. In a deal approved by the Council today the Governors Bay Jetty Restoration Trust will buy the jetty for \$1 so that it can take full control of its restoration.

The Governors Bay jetty has been closed to the public since 2011.

Once the 300-metre long jetty is restored the Trust will sell it back to the Council for \$1.

The Governors Bay jetty dates back about 150 years and has been closed since a post-earthquake engineering inspection in 2011 deemed it unsafe. A condition assessment done in 2014 identified numerous problems with the jetty and estimated that repairing it would cost more than \$3 million.

During submissions on the

Council's 2015-25 Long Term Plan residents of Governors Bay asked the Council to partner with them to get the jetty repaired, saying they would fundraise and offer their technical expertise.

The Council subsequently set aside \$535,000 to help pay for the repair work.

However, the Governors Bay Jetty Restoration Trust have come to the conclusion that a full restoration would be more viable than repairing the jetty. They want to plan and manage the project themselves and have asked to have full control of the jetty during its restoration.

How much the full restoration of the jetty will cost has yet to be determined.

A report presented to the Council today said the Trust had no interest in retaining ownership of the jetty in the long-term and it would be

sold back to the Council at the same price that it was sold to the Trust once all the work had been completed.

Article Christchurch City Council  
Newsline



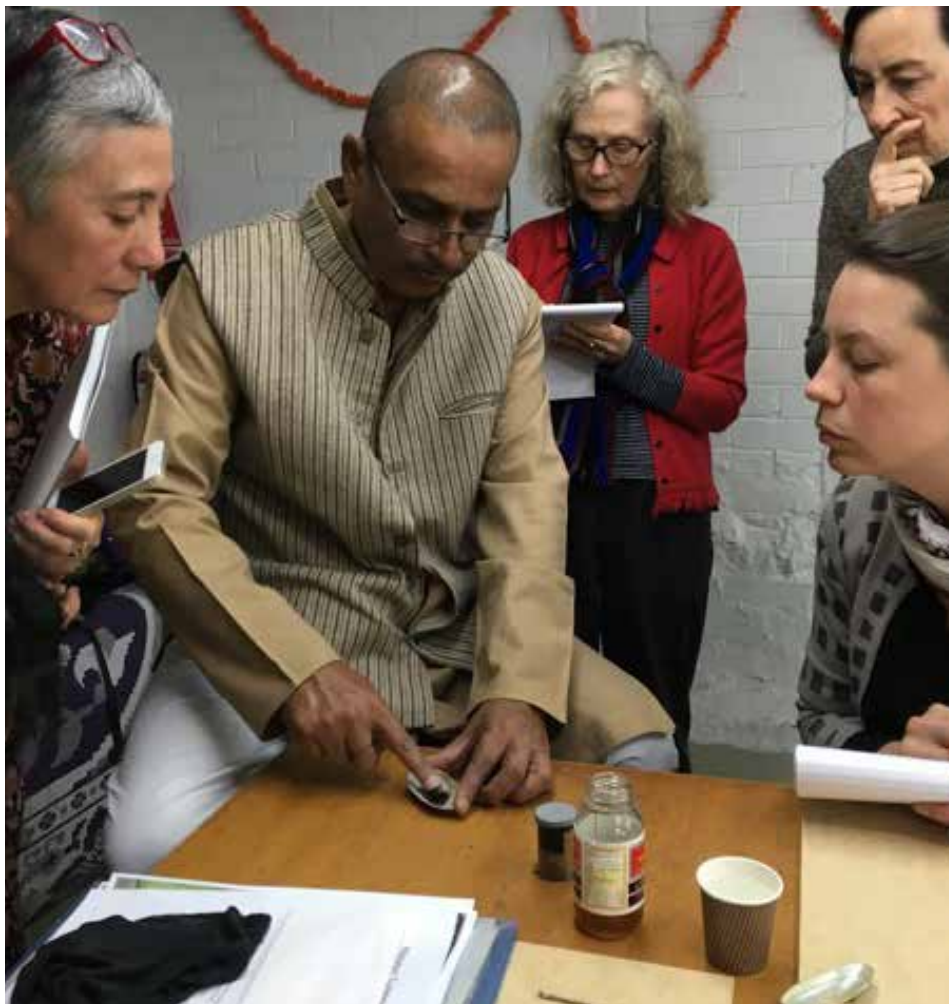
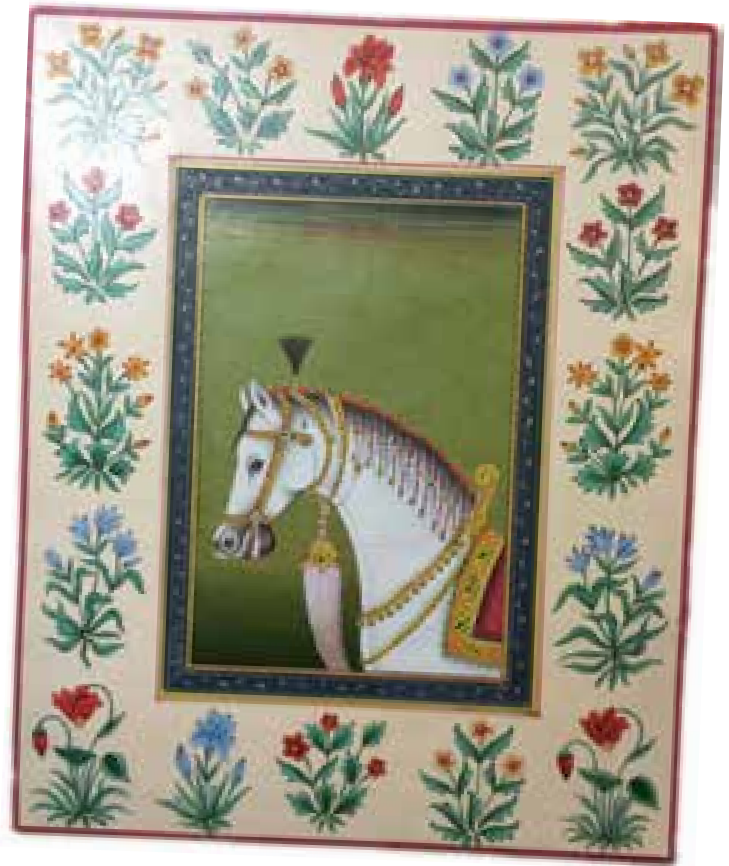
# The Journey of the Guru and his Chela

Ajay Sharma is an artist and Master Mughal Miniature Painter of the Rajasthan School who has been supervising a studio of employees and students in Jaipur, India, since 1984. From 1979 until 1984 he was apprenticed under the direct tutelage of Master Painter Mahendra Sharma in Jaipur, India.

He has built an international reputation as a result of his teaching and exhibiting both in India and abroad. International exhibitions include New York, Sydney and the UK and his work has been featured in publications such as 'Art in America', 'Art Forum' and 'Vogue Italia'.

Ajay's works are exquisite - painted using traditional methods - single hair squirrel tail brushes with the finest points (squirrels are not harmed), natural pigment such as lápiz lazuli, Carmine, soot mixed with gum arabic and 24 carat gold leaf pigment. These colours give his work vibrancy and permanence. The paper is all hand made from ledgers which are sometimes a hundred years old - prepared in layers and then coated with a base of Kharya (calcium carbonate, or chalk) mixed with a solution of gum arabic and water.

Once the painting is completed it is burnished by hand to give it an amazing sheen.



In a career spanning some 40 years, Ajay has devoted himself to conserving and perpetuating the age-old method of miniature painting. He teaches all aspects of the art form, including composition, drawing, conservation, 'copy work', and the research and preparation of natural pigments.

'Copy works' are meticulous reproductions of traditional artwork using the same methods and materials that would have been used hundreds of years ago.

Oxford Street Art is privileged to present the work of Ajay Sharma and his students from 13th October to 13th November.

The opening night is at 6pm on Thursday 13th October 2016.

We very much look forward to seeing you there.

Tim and Madhu  
Oxford Street Art  
13a Oxford St Lyttelton

## Make the most of Beca Heritage Week

There's a fantastic range of events that unearth our hidden histories, take the opportunity to be inspired, discover new places and learn old pastimes that celebrate our history. Below is a sample of what's new this year, for the full programme and event details visit the website [www.ccc.govt.nz/heritageweek](http://www.ccc.govt.nz/heritageweek)

### Be a time traveller - a fun day at the Arts Centre

Take a trip back through time, be an archaeologist for the day. As an historical detective, this is your chance to unearth evidence of our past in a recreated excavation pit. Rediscover the Arts Centre's North Quad, Library and Great Hall, live music, vintage markets and much more. Sunday 16 October, the Arts Centre - Market Square

### Ever wondered about the story of your house?

Research your house workshop. Learn how to uncover the history of your house. Booking information go to the website [www.ccc.govt.nz/heritageweek](http://www.ccc.govt.nz/heritageweek). Tuesday 18 October, 5.30 to 8.30pm.

### At the Bay – exhibition

Come and find out more about the community of classic Kiwi baches at Boulder Bay. 17-27 October - weekdays Civic Offices, 53 Hereford St.

### Every House Tells a Story

Explore the Canterbury Workers' Educational Association (WEA) building and discover its story and that of the neighbouring buildings. Saturday 15 October, CWEA Building, 59 Gloucester Street

### Lyttelton Museum : A Place Apart

Look at life in Aotearoa / New Zealand's only leper colony on Otamahua / Quail Island. Images from Lyttelton Museum's photograph collection reveal the colony site and the lives of the patients who were quarantined there. FPhoto: c.1924 Leper huts on Quail Island, Lyttelton Museum photograph collection at the Lyttelton Information Centre 20 Oxford St Lyttelton.

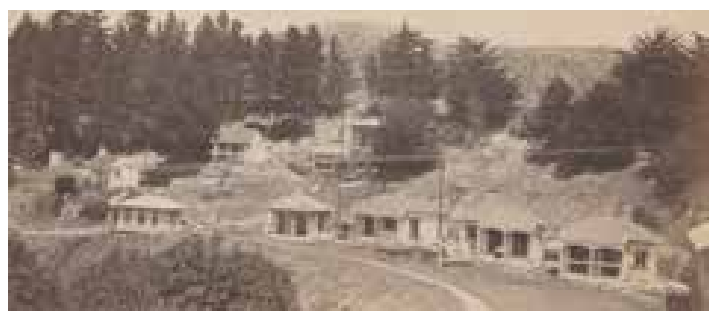
10am to 4pm daily except Sundays / Labour Day, 11am to 3pm. Also Visit the site of the leper colony as part of the Otamahua/Quail Island tours 15-16 October.

### Orton Bradley Park: A fun day for the family in park surrounds.

Explore the heritage buildings, learn about our colonial past and imagine what life was like over a hundred years ago. Take a look at the old Mill House, it will be operating on water power. Live music, food and market stalls along with lambs add to the festive spring atmosphere.

Sunday 23 October, 10:00am to 4:00pm

Article Christchurch City Council







## Blessing marks start of Sumner Rd work

A multi-million dollar project to get Sumner Rd re-opened has moved into a new phase.

Sumner Rd, from Evans Pass to Lyttelton, has been closed since the February 2011 earthquake due to the extent of the damage to the road and the high risk of further rock falls, cliffs collapsing and landslides. Today the re-opening of the road moved a step closer with a blessing and tree planting to mark the start of geotechnical risk mitigation work around Crater Rim Bluffs, at the top of Sumner Rd.

A blessing by Rapaki Marae representative Kopa Lee marks the start of a new phase of work on Sumner Rd. The work will be carried out by McConnell Dowell, in partnership with Beca, Doug Hood Mining and Geovert and will be jointly funded by Christchurch City Council and the NZ Transport Agency as the first stage of a phased project to re-open Sumner Rd.

The work will include scaling the upper reaches of the Crater Rim Bluffs to remove unstable rock and creating a 400-metre long, 15 metre wide catch bench at the base of the bluffs to protect the road below from rockfall. A rock bund will also be constructed in Double Gully to the west of Crater Rim Bluffs to capture rockfalls from the Bluffs. The bund will be several metres high and 50-metres long and covered with basalt cobbles to reflect the basalt stone walls in the area.

To minimise environmental impacts and reduce cost, the existing road will be used as a 'haul road'

for transporting excess rock from the excavation of the bench, and structural works will be completed under the existing road. Using the existing road rather than constructing a separate haul road also makes a start on the repair work required to return the road to two-lane use.

Once the geotechnical risk mitigation work is completed, the next stage of

the work – investigating the extent of the damage to the retaining walls - will begin. The road will then be repaired and reinstated. At this stage it is expected the road will re-open in 2018.

Christchurch Mayor Lianne Dalziel said the reopening of Sumner Rd would play a crucial role in the region's earthquake recovery and exemplified the commitment to building the city's resilience.

"Sumner Rd is such an important place to Cantabrians – economically as the link between Lyttelton Port and the city, as the connection between Lyttelton and Sumner communities, and also as a hugely popular recreational space with tourists and cyclists. It's really exciting to be heading into this phase of work and to see us closer to being able to travel this road once again," Mayor Dalziel said.

NZ Transport Agency Southern Regional Director Jim Harland said with the geotechnical work starting the community would start to see great progress in getting Sumner Rd re-opened.

"This is a lifeline route for Christchurch and so critical in supporting the economic wellbeing of not only Canterbury but the whole South Island. This is recognised by the Transport Agency's 83 per cent funding of the work as part of the earthquake recovery programme."

Mr Harland said the reopening of Sumner Rd would help in limiting night-time closures of Lyttelton Tunnel and provide better access for the harbourside community.

Article Christchurch City Council Newsline



*Support.  
Strength.  
Success.*

## News from the LHBA Networking Meetings Showcasing our Local Business's

### September 23rd

#### David Bennett - David Bennett Coaching Change your Thinking, Change your Life

The inspirational David Bennett spent many summers in Lyttelton while going between England, Brazil, Scotland & Australia during the winters. A few years back, he and his partner Robin moved full time into their house in Gilmour Terrace.

With an MSc Coaching Psychology, a B Comm, CA, Grad Dip NFP Mgmt and over 20 years in a variety of management and leadership roles, David is an experienced executive coach who speaks the language of business. He tailors his mentoring to the specific psychological needs of the person or groups he's coaching - including our Friday morning networking meeting.

Active in the business community, David is a member of the Canterbury Employers' Chamber of Commerce (CECC), Human Resources Institute of New Zealand (HRINZ), Rotary International, The Canterbury Club, and the New Zealand Institute of Management Southern.

He is also keen to help through Toastmasters Lyttelton - an international program that helps people develop their interpersonal, public speaking & leadership skills. The Lyttelton Toastmasters group meets at the Lyttelton Boardroom at 7:30pm on the 2nd & 4th Wednesday of each month - tomorrow night is the next meeting.

David stepped us through some of the basics of mindfulness - learning how to pay attention with flexibility, openness, and curiosity. An easy to remember acronym that encapsulates the model is ACT.

- **A** = Accept your thoughts and feelings, and be present
- **C** = Choose a valued direction
- **T** = Take action



There are six core processes of ACT, and thoughtfully choose your response to people and events.

- **Contact with the present moment** (Be here now) - Engage in the moment
- **Values** (Know what matters) - Use your values to guide your decisions
- **Committed** (Do what it takes) - Motivation will follow action
- **Self-as-context** (Pure awareness) - Be aware, and observe our thoughts
- **Defusion** (Watch your thinking) - Separate feelings from your sense of self
- **Acceptance** (Open up) - Accept feelings of all types, drop the struggle

David lead us through a mindfulness activity, followed by a discussion of each of our current methods, uses, and successes from mindfulness techniques.

#### LHBA Networking Meetings

Every Friday at Fat Tony's 17 London Street. BYO coffee.

#### How can I attend?

Book yourself a spot at <https://lhba-networking.eventbrite.co.nz>, spaces are limited so please do book. RSVP at the previous meeting

Email [dana@bluefusion.co.nz](mailto:dana@bluefusion.co.nz) or Txt 021 027 05450

# Preserving Lyttelton's historic red rock walls



A Christchurch builder's generosity is helping to ensure Lyttelton's historic red rock retaining walls stand for future generations.

After amassing a pile of volcanic red rock from the demolition of a garage at a property he was working on in Lyttelton, builder Greg Bathurst decided it would be a waste to throw the rock away so he offered to make it available to the crews working to reface the township's earthquake damaged red rock retaining walls.

The walls are a distinctive part of Lyttelton's streetscape and many of them were built in the mid-19th century by the inmates of Lyttelton Gaol. During the earthquakes many of them collapsed or were so badly damaged that they needed to be deconstructed.

The cost of refacing all the damaged walls is prohibitively high but key walls around the township are being refaced using salvaged rocks.

"We were really pleased when Greg offered us the rock because it has been in short supply. It is fantastic that this rock, rather than being sent to landfill or thrown into the harbour, is going back into Lyttelton," said Christchurch City Council Heritage Conservation

Planner Victoria Bliss. Mr Bathurst said the red rock walls were unique to Lyttelton and he was pleased to be able to contribute to their restoration.

"I've been working over in the township a lot since the quakes and have been watching the work they've been doing to restore the retaining walls and just thought it was one small way I could help.

"I think it's great so much effort is being put into those restoring those walls, particularly when you think about all that's been lost in Lyttelton because of the quakes," Mr Bathurst said.

Ms Bliss said the red rock walls had great heritage significance as they dated back to the very early settlement of Lyttelton and made a fundamental contribution to Lyttelton's identity and the sense of it being a unique part of Christchurch.

"Refacing the walls is an expensive exercise but we want to do it wherever possible because they form a key element of the historic streetscape and visual amenity of the town," she said.

*Article Christchurch City Newsline*

# BPWF 2016

Get your boots on, because this year's Banks Peninsula Walking Festival running over four weekends in November features a wide variety of walks from old favourites to new special interest walks. "What is wonderful about the festival" says coordinator Sarah Pritchett "is that there are walks for everyone – this year we have walks for sketchers, photographers, history buffs, birdwatchers, parents and babies, dogs and their people, campers, botanists and many more".

The Programme for this year's Festival is out now and is available at the Lyttelton Harbour Information Centre, on [www.bpwalks.co.nz](http://www.bpwalks.co.nz) or on our facebook page – Banks Peninsula Walking Festival. All walks can be booked through Eventfinda (search on Banks Peninsula Walking Festival 2016) or call Sarah on 021 08254 606.

This year's festival also targets children and youth by facilitating overnight experiences with Project K, Refocus and Youthtown. These walks will give many of the children and youth these organisations work their first ever experience of tramping.

The festival will conclude with the Te Ara Pātaka Harry Ell centenary celebration for Chrischurch MP and early conservationist Harry Ell centenary. 100 years ago Christchurch conservationist Harry Ell built Sign of the Packhorse Hut as a rest house on his proposed Summit Road - a recreational route from Christchurch to Akaroa via the magnificent summit ridgelines of Banks Peninsula. Now Rod Donald Banks Peninsula Trust and Department of Conservation have brought Ell's dream to fruition completing the walking track Te Ara Pākaka / Summit Walkway linking Gebbies Pass to Hilltop. A variety of walks on offer enable you to join the celebrations on the top of Mt Herbert, the highest point on Banks Peninsula.

Article Rod Donald Trust





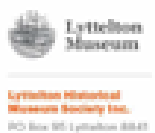
**54a Oxford St**  
**Lyttelton - just behind the pool**  
**Open Wednesday to Friday 10-4pm**  
**Saturday 10-1pm**  
 Closed if weather is really wet.  
**EFTPOS now available**

## HARBOUR HERITAGE

PRESS RELEASE, 01 October 2016

LYTTELTON MUSEUM PRESENTS

**A Place Apart**



In association with BECA Heritage Week 2016, Lyttelton Museum presents *A Place Apart*, an exhibition of photographs looking at life in Aotearoa New Zealand's only leper colony on Ōtamahua Quail Island.

Images from the museum's photograph collection give insights into the colony site and the lives of the patients who were confined there between 1906-1925.

Fear and stigma still surrounded leprosy in the early 20th century and, hidden away, its patients endured isolation and loneliness, but also inspired empathy and generosity from harbour locals and people around the country.

*A Place Apart* is Lyttelton Museum's fourth popup exhibition since the building that housed the collection was demolished as a result of the Canterbury Earthquake sequence 2011-2012. The collection was rescued and is currently safely in storage awaiting a new home.

The exhibition runs from 1 October to 29 October at the Lyttel Gallery in the Lyttelton Harbour Information Centre, 20 Oxford Street. For more details, email [info@lytteltonmuseum.co.nz](mailto:info@lytteltonmuseum.co.nz).

\*\*\*\*\*

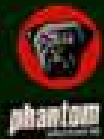
The following BECA Heritage Week event complements this exhibition:

Visit the site of New Zealand's only leper colony on a guided tour of Quail Island by the Ōtamahua / Quail Island Ecological Restoration Trust.

The tours run on Saturday 15th and Sunday 16th October. Return fares \$15 adult, \$10 child, or \$30 for families. For booking and details contact [chairman@quailisland.org.nz](mailto:chairman@quailisland.org.nz) or phone 384 5338.



# WRITERS MAKE WITH MUSIC



ROGER HICKIN

KATHLEEN GALLAGHER

BILL DIREEN

REBECCA NASH

DANIELLE O'HALLORAN

PHIL NORTON

ANDREW COYLE

Stapes  
(attached to  
oval window)

Semicircular  
Canals

Cochlear

Eustachian Tube

+ music thereafter

Sun 9 October 8.30pm

Lyttelton Coffee Company, London St

DOOR CHARGE \$0:00



## American Foulbrood disease hits Lyttelton Bees

This is a message to everyone in the wider Lyttelton area who has a beehive, knows of someone who has one, or who knows of any bees that have gone feral.

American foul brood disease is the worse disease to hit NZ bees yet. It is a parasite which feeds on the grubs so that the bees can never reach maturity. The hive will die out. When a hive is weakened sufficiently by foul brood, neighbouring bees will raid the hive and transfer it to their hive.

The only solution to this problem is to BURN THE HIVE AND EVERYTHING IN IT, horrible as it may seem.

Last year I had a hive that had to be disposed of because of foul brood, and other hives in the area met with the same fate. This year the same thing has happened to the replacement hive, and I can have no more bees on the property until Lyttelton is clear. I find this heartbreaking, as our precious bees are so much under siege world wide, and we are so dependent on them for our survival.

### What can hive owners do?

Check your hive, and know what you are looking for, and inform the Beekeeper's Association if you have it. Then dispose of your hive in the appropriate way.

If you have foul brood, inform everyone you know so that they can check as well.

If you have an unregistered hive, please register it. This keeps important communication amongst beekeepers going, and allows you to get assistance when needed.

### If you see any bees that have swarmed from a hive

Please report it to the Council or the Beekeepers' Association. They may be contaminating other hives, and should be dealt with as soon as possible. There are no genuinely wild bees left in New Zealand now.

Seventy percent of our food is dependent on bee pollination, and we are losing our bees at an alarming rate. Please do what you can to support these helpful little critters.

Juliet Neill

## Would you like to join the Watering Team?

The trees are planted at Urumau Reserve on the east of Lyttelton but to keep them all growing well we rely on locals to help with a water roster.

Last year we had six regular waterers and so that meant you watered on average every six weeks. This year we have two planted areas that require water. Each area takes at good hour to complete.

Would you like to help? A training workshop will be held shortly explaining everything that's involved. If you are interested call 328 9093 or email [lytteltonreserves@hotmail.co.nz](mailto:lytteltonreserves@hotmail.co.nz).

## Lift film evening

### SOS Save Our Seeds

Friday 7th October, 7.15 p.m.

The Portal, 54A Oxford St, up the drive between the swimming pool and the playground. Why is it important to save our own seeds for growing our own food? Why not just buy imported seeds? Watch NZ professionals and amateurs who give advice on why and how to save our own seeds, so we grow food that does well in our own district. Perhaps you have heard of Kay Baxter and her Heritage Seeds at the Koanga Institute, featured here; and the Localising Food Tour Project. See Farmers Markets and Community Gardens, and people who focus on providing seed banks/libraries, seed exchanges, for us, for schools, all over NZ, including Helen Dew in Carterton – who "seeded LIFT Library" for us, and Sevenoaks School in ChCh. Learn about the Maori culture of seeds and making containers – and lots more.



# Naval Point Club News

## Junior Sailing, Windsurfing and Junior Waka Ama

### Do you want to Coach?

Naval Point Club is happy to announce that we will support club members who aspire to Learn to Sail coaching. We will organise a YNZ Learn to Sail Coaches course for club members to qualify as Learn to Sail dinghy coaches. The club will pay for this course with a view to establishing more keen coaches/instructors for our learn to sail programmes.

This opportunity should appeal to parents of sailors who are keen to learn more and become more involved in club sailing.

Any club member who would like to take advantage of this fantastic opportunity to gain nationally recognised coaching qualifications should email David at [programmes@navalpoint.co.nz](mailto:programmes@navalpoint.co.nz)

Naval Point is always looking for keen coaches/instructors to pass on their experience and knowledge to the next generation of water sports enthusiasts. If anyone would like to know more about becoming a coach for any activity or would like to coach then please contact David at [programmes@navalpoint.co.nz](mailto:programmes@navalpoint.co.nz) or by calling 021338752.

### Sailing

The club is working hard to ensure there are fantastic opportunities for juniors across all categories of sailing as follows:

- Learn to Sail One
- Learn to Sail Two
- Green Fleet
- Open Fleet
- P-Class
- Starling
- Two handed Dinghy in conjunction with Canterbury Yachting Association

We are also working on an exciting opportunity with Bic'Open Dinghies in early 2017

Should you have any queries about the club's junior sailing training programmes please contact David Noakes, Ross May or Matt

### Windsurf

Learn to Windsurf will run Saturday mornings  
Windsurf Coaching will run Saturday mornings



### Waka Ama

Efforts are also underway with TWP and Waitaha to ensure there are plenty of fantastic, fun paddling opportunities to be had for Tamariki - please see below. Barbecues on the deck after sailing and waka sessions will also be included. Any queries about Junior Waka Ama opportunities - please contact either David Noakes- NPCL, Peter Low at Waitaha Paddling Club or Quentin at Te Waka Pounamu.

### Wardroom Venue Hire

Our first floor Wardroom has a secluded and commanding position overlooking Lyttelton Harbour. It has a well stocked Bar, a large balcony for BBQs, an in-house catering service, high quality audio-visual facilities and easy access to toilets and wash facilities on the ground floor. We cater for small meetings, through to concerts, parties and weddings. Contact the office to discuss your function requirements. Please apply to [admin@navalpoint.co.nz](mailto:admin@navalpoint.co.nz) to reserve a date and enquire about specific charges.

## What's happened with the Kea's?

Since reporting on Mark and Laura's Kea project at Arthurs Pass the Give-A-Little web site has attracted \$12,000 in donations. There is now enough funding for Mark and Laura to do more work on the ground. To help them further they are seeking a volunteer (s) who can continue with the fundraising. If you have the skills - they really need to hear from you. Could you please reply to [keasightings@gmail.com](mailto:keasightings@gmail.com) Thank you.

## Village planning meeting

### Diamond Harbour

2-4pm Saturday 29 October Stage Room, Community Hall

Commences with presentations by CCC Planners on Village Traffic and Pathways options. Eight other projects available for comment (e.g. Godley House site). Organised by DHCA and CCC. Your chance to provide personal feedback and be involved. Drop-in between 2pm and 4pm.

## Advertising in the Review

Since the inception of the Lyttelton Review we have been very generous with advertising. Any one off advertisements for businesses have generally been published free. Advertisers are encouraged to make a donation to our volunteer organisation.

To be a permanently listed business in the directory and have articles written about your business we have a yearly membership fee of \$165 including GST. If you would like to have a yearly listing please contact us [infocentre@lyttelton.net.nz](mailto:infocentre@lyttelton.net.nz) and we will forward our membership application.

## Thanks Rata Foundation

The Trustees of the Information Centre would like to thank the Rata Foundation publically for their continued support of our centre. Our yearly grant is most appreciated.



## Bay Harbour Toastmasters Open Night

Wednesday 26 October, 6.30pm-8.00pm

Lyttelton Community Board Room, 25 Canterbury Street

Come along to Bay Harbour Toastmasters free Open Night. Hear what Toastmasters is all about and what it can do for you!

Toastmasters International is a world leader in communication and leadership development. By writing and delivering speeches, giving and receiving constructive feedback and accepting various leadership roles, members improve their confidence, speaking and leadership skills.

If you seek personal and professional development in a supportive environment, and wish to become an effective communicator and leader at work, at home or in your community, then come along to your local club - Bay Harbour Toastmasters.

We are a friendly group that meets every second and fourth Wednesday of the month. Visitors always welcome. Our Open Night is free, fun and will give you a great introduction to what Toastmasters offers.

More details contact: Jann Meehan, 021 263 1040,

Bay Harbour Toastmasters. Follow us on Facebook.

## Spring Festival of Change

Spring is a time where we see and feel a lot of changes happening around (and often within) us. We're taking this opportunity to make some "new year's resolutions" and try out some things we'd like to do better for our environment or for our own wellbeing and lifestyles.

We're hoping a few others - local groups, families and individuals - will join in on trying something new. This could be remembering to bring your own coffee cups for takeaways, starting a daily practice of meditation, breathing or exercise, changing your habits of buying (to fair trade, local, organic etc) or any number of things you'd like to change in your life.

Lucette (Lyttelton Farmers Market) and Selena (Harbour Co-Op) will be eating locally grown food for the month. Read about their experiences on their blog, Lyttelton Locavore.

Sarah (Waste Matters) will be on instagram collecting things that have made her smile - look out for #manymene (or add your own under that hashtag).

If you want to get involved, email [jacq@lyttelton.net.nz](mailto:jacq@lyttelton.net.nz)

## Wondering what's happening with the Jetty?

The Governors Bay Jetty Restoration Trust has been working hard behind the scenes and is now ready to give a progress report on the project to restore the Jetty.

The meeting is on Sunday 16 October 4pm to 5pm at the Governors Bay Hotel.

For more information, go to [www.savethejetty.org](http://www.savethejetty.org) or email [savethejetty@gmail.com](mailto:savethejetty@gmail.com).

## Global Dinner Class

Our last Global Dinner Class for 2016 will be On November 27th starting at 3pm. It is

The Mystery and Intrigue of Persian Cuisine.

In this class we will be cooking lots of different traditional dishes from Iran- the most hospitable culture in the Middle East.

The origin of many dishes we now take for granted; Persian Cuisine is full of delicious ingredients and unusual cooking techniques.

Of course we finish with a 4-course dinner and matching drinks.

Email early to book. [info@ground.co.nz](mailto:info@ground.co.nz)





# SPRING FESTIVAL OF CHANGE

**September 26 – October 22**

Do you want to be inspired by people taking on a challenge to do things differently? Follow local heroes & heroines as they explore

WASTE

FOOD

ENVIRONMENT

WELLBEING

Find out about their adventures on  
[www.lyttelton.net.nz](http://www.lyttelton.net.nz)  
facebook: "spring festival of change"  
instagram: #manymene (many smiles)  
at Lyttelton Library

If you want to take up a challenge contact Jacqueline Newbound –  
[jacq@lyttelton.net.nz](mailto:jacq@lyttelton.net.nz)

Saturday 22nd October 12:30 – celebrate our achievements together  
with a pot luck picnic at Albion Square.



## Put some Spring in your step with The Breeze Walking Festival 2016!

The Breeze Walking Festival is back for 2016 and it's bigger than ever before! With over 50 walks, there's something for everyone. From child-friendly strolls to a more energetic trek for the physically fit, we've catered for all interests and ages.

Take in an amazing sunrise at New Brighton Beach with a walk amongst the Dunes at Dawn, or bring your little one along to join mouse and his friends as they hunt out a Gruffalo. If you love a challenge, join the Christchurch 360 Trail team as they walk a 360 degree loop of Christchurch over 8 days, and even your four legged friend can get in on the action with The Great Dog Walk!

All of the walks take in areas within Christchurch city, the Port Hills and parts of the Waimakariri and Selwyn Districts, and many gorgeous places you didn't even know existed!

The Breeze Walking Festival is a chance to discover new places, learn more about old hangouts, try fun activities and above all to enjoy spring sunshine and good company. For more info, visit [walkingfestival.co.nz](http://walkingfestival.co.nz) and download The Breeze Walking Festival booklet today or pick one up from the Lyttelton Library, Lyttelton Service Centre or Lyttelton Information Centre.

<https://www.facebook.com/events/1164273126966507/permalink/1165235560203597/>

# HARBOUR HERITAGE



## A Place Apart

Life in the Ōtamahua / Quail Island Leper Colony

In association with BECA Heritage Week 2016, Lyttelton Museum presents an exhibition of photographs that reveal the colony site and the lives of the patients who were confined there between 1906-1925.

**1 OCTOBER – 31 OCTOBER, 2016**

**LYTTEL GALLERY**

Lyttelton Harbour Information Centre, 20 Oxford Street  
Open 10am – 4pm Monday – Saturday, 11am – 3pm Sunday  
Details at [www.lytteltonmuseum.co.nz](http://www.lytteltonmuseum.co.nz)



**Lyttelton  
Museum**



Visit the site of New Zealand's only leper colony on a guided tour of Ōtamahua / Quail Island by Ōtamahua / Quail Island Ecological Restoration Trust.

Saturday 15th and Sunday 16th October

For booking and details contact [chairman@quailisland.org.nz](mailto:chairman@quailisland.org.nz) or phone **384 5338**.

Return fares \$15 adult, \$10 child, or \$30 for families.

# *Dance Towards the Light*



Rejoice and enter the energy of regeneration as the  
full moon approaches

**Friday 14<sup>th</sup> Oct**

**7.30-9.30**

**St Saviours on Holy Trinity Church**

Winchester St, Lyttelton

*All states of being human are welcome on the dance floor  
Trust in the power of movement and connection*

*Discover your joy in the dance*

\$10 entry / bring water / wear comfortable clothes / drug and alcohol free  
sacred space                      Ffi call Jan or John 3288977



**OXFORD  
STREET ART**

LYTTTELTON

# 'the journey of the guru and his chela'

**AJAY SHARMA**

13 October - 13 November 2016

**'chela'**

Anne Smith  
Chris Conlon  
Francine Haywood  
Jethro Buck  
Madhu Rees  
Prabhu Singh  
Swapna Reddy  
Veernarayan Ary  
Vinita Sharma



Let us take you on a journey of Indian miniature paintings with the Master Mughal miniature painter AJAY SHARMA from Jaipur and his international students (his 'Chela')

**Opening Night Thursday 13 October 6 pm**

**All Welcome**

13a Oxford Street  
Lyttelton  
[www.oxfordstreetart.co.nz](http://www.oxfordstreetart.co.nz)  
+64 274298505

**OPENING HOURS**  
Weds - Sunday  
11.00am - 5pm



# GO TO THE WEBSITE FOR FULL EVENT DETAILS: CCC.GOV.T.NZ/HERITAGEWEEK



## HERITAGE Week

CHRISTCHURCH —  
14 – 24 OCTOBER 2016



All events have disability access unless specified.

## TOURS

### VICTORIAN TEA PARTY

**\$2**  
14 Oct, 10am–3pm  
Avebury House  
9 Eveleyn Cousins Ave, Richmond  
Enjoy Devonshire tea at a delightful Victorian house and check out the secrets of its past.

### HIDDEN HISTORIES OF RICCARTON HOUSE

**ADULT \$10**  
14, 16, 17, 18, 19, 20, 21 Oct  
10.30am–11.30am  
Riccarton House  
16 Kahui Road, Riccarton  
\$10 Adult, \$5 Child, \$25 family pass  
Take a tour of this restored Christchurch treasure and hear about its rich past and recently uncovered secrets. Booking required for groups of 4+. Phone 027 443 0067 or (03) 341 1018. Disability access ground level only.

### ST PAUL'S CHURCH OPEN DAY

**FREE**  
15 Oct, 10am–2pm  
St Paul's Anglican Church  
1 Harewood Road, Papanui  
Come and view a display of historical photos and wedding gowns.

### EVERY HOUSE TELLS A STORY

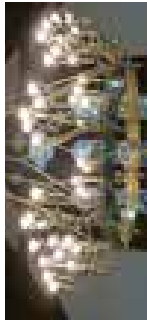
**FREE**  
15 Oct, 10am–2pm  
59 Gloucester Street, Central City  
Explore the Canterbury Workers' Educational Association (CWEA) building and discover its story.

## EXHIBITIONS

### INVITING IN: EXPLORING 30 YEARS OF HOMOSEXUAL LAW REFORM

**FREE**  
14 Oct–11 Nov  
Mon–Fri 8.30am–5.30pm  
Matariki Concourse,  
University of Canterbury  
Visit an exhibition which marks 30 years since the Homosexual Law Reform Act 1986 was passed.

### HERITAGE OF



### "A GLORIOUS LIGHT"

**FREE**  
15 Oct, 10.30am–3.30pm  
16 Oct, 11.30am–3.30pm  
St Saviour's Church at Holy Trinity  
17 Winchester St, Lyttelton

Visit the exquisite interior of St Saviour's Church (1885) and see its glorious 1860 Corona Lucis (Crown of Light) which was repaired and restored following the earthquakes.

### HIDDEN HISTORIES OF NEW REGENT STREET

**FREE**  
16 Oct, 10am–4pm  
Meet outside Go Kiwi Gift Store  
18 New Regent Street, Central City  
Discover New Regent Street with a fun and informative guided tour.



### OPEN DAY AT THE MALTHOUSE

**CHILDREN FREE**  
23 Oct, 10am–5pm  
The Malthouse  
71 Colombo St, Somerfield  
\$5 Adult, Children free  
Visit one of the last remaining heritage stone buildings in Christchurch.



### SPIRITED CEMETERY TOURS

Various dates and locations listed below.

Take a tour of an historic graveyard with local historian Richard Greenaway. Wear sensible shoes.

**FREE**  
14 Oct, 2pm–4pm, Burwood Anglican Churchyard, 305 New Brighton Road. Meet at Cemetery.  
15 Oct, 2pm–5pm, Barbadoes Street Cemetery, 384 Barbadoes Street. Meet at Lych Gate, Cambridge Terrace.  
16 Oct, 2pm–4pm, Halswell Anglican Cemetery, 329 Halswell Road. Meet at Cemetery.  
17 Oct, 2pm–4pm, Papanui Anglican Cemetery, 1 Harewood Road. Meet at Cemetery.  
18 Oct, 2pm–4pm, Avonside Anglican Cemetery, 168 Stanmore Road. Meet at Cemetery.  
19 Oct, 2pm–4pm, Woolston-Heathcote Cemetery, Rutherford Street. Meet at Cemetery.

### ST DAVID'S ANGLICAN CHURCH

**FREE**  
16 Oct, 11am–3pm  
St David's Anglican Church  
829 Main North Road, Belfast  
Join us for a guided tour through St David's Anglican Church. Free Devonshire tea and treasure hunt for children.

### DISCOVER HOW A LIGHTHOUSE WORKS

**\$2.50**  
16, 23 Oct, 12.30pm–3.30pm  
Akaroa Lighthouse  
Beach Road, Akaroa  
Visit New Zealand's only fully restored and working historical lighthouse that is open to the public. No disability access.

### ST ANDREW'S AT RANGI RURU OPEN DAY

**FREE**  
15 Oct, 10am–4pm  
St Andrew's at Rangi Ruru Presbyterian Church  
16 Merivale Lane, Merivale  
Explore a truly remarkable example of the Carpenter Gothic architectural style. Talks at 11am and 2pm.



### TOUR OF HERITAGE HOUSES

**\$25**  
16 Oct, 10am–4pm  
Houses addresses on tickets  
Take a self-guided tour around six heritage houses, including the Ngalo Marsh House. Tickets from paper Plus Merivale. No disability access.

### EXPLORE OTAMAHUA /QUAIL ISLAND

**ADULT \$15**  
15–16 Oct, 9am–3.30pm  
Quail Island, Lyttelton Harbour  
\$15 Adult, \$10 Children and Senior Citizens, \$30 family pass  
A two hour guided walk of the island. Booking required: Email chairman@quailisland.org.nz, or phone 384 5338 during business hours. No disability access.  
Visit *A Place Apart* exhibition at the Lyttelton Arts Centre about the leper colony on Quail Island.



### AT THE BAY

**FREE**  
17–27 Oct, 9am–5pm  
Civil Offices, Level 1  
53 Hereford Street, Central City  
Come and find out more about the community of classic Kiwi baches at Boulder Bay.

### A PLACE APART

## PLAN YOUR DAY

### FRIDAY 14 OCTOBER

- Voices Against War: Courage, Conviction and Conscientious Objection in WW1 Canterbury
- A Place Apart (14 Oct–10 Nov) (14–24 Oct)
- Inviting In: Exploring 30 years of Homosexual Law Reform (14 Oct–11 Nov)
- Display of Textiles (14–24 Oct)
- Adding a Touch of Gold to Stitchery
- Spirited Cemetery Tour (Burwood Anglican)
- Victorian Tea Party
- Hidden Histories of Riccarton House

### SATURDAY 15 OCTOBER

- Explore Otamahu/Quail Island
- "A glorious light"
- St Andrew's at Rangi Ruru Open Day
- Every House Tells a Story
- Spirited Cemetery Tour (Barbadoes Street)
- Unearthing Family Stories
- Family History Open Day
- Restoring the Nurses' Memorial Chapel
- St Paul's Church Open Day

### SUNDAY 16 OCTOBER

- Explore Otamahu/Quail Island
- "A glorious light"
- Regenerating Cathedral Square: Mad Ideas that Might Work
- Belfast District Hidden Histories
- Kirklin 'o the Tartan
- St David's Anglican Church
- Discover how a Lighthouse Works
- Tour of Heritage Houses
- Spirited Cemetery Tour (Halswell)
- Family History Open Day
- Hidden Histories of New Regent Street
- Hidden Histories of Riccarton House
- Be a Time Traveller!
- Quick Fire: Hidden Histories



Consistent objects at Paparua Prison during World War I. All Rights Reserved Patricia Smith

## HERITAGE OF HALSWELL

**FREE**  
16 Oct, 12noon–8pm  
17 Oct, 10am–4pm  
Piharau Room, Te Hapua: Halswell Centre, 341 Halswell Road  
An exhibition of historical photos and memorabilia of the greater Halswell district 1840–1960s.

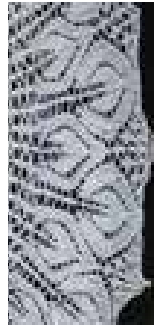
## VOICES AGAIN! WAR: COURAGE, CONVICTION AND CONSCIENTIOUS OBJECTION IN WORLD WAR 1 CANTERBURY

**FREE**  
14 Oct–10 Nov, Library hours  
University of Canterbury Central Library, Ilam Road  
Find out what motivated the courageous individuals who spoke out for peace during World War I.  
*While at the University visit the Inviting In: Exploring 30 Years of Homosexual Law Reform exhibition.*

## TALKS

### 2016 HERITAGE BOOK & WRITING AWARDS

**FREE**  
22 Oct, 4pm–6.30pm  
South Library Boardroom  
46 Colombo Street  
Hear from the shortlisted writers and find out who the prize winners are.



### A JOURNEY THROUGH LACE KNITTING

**\$2**  
17 Oct, 7pm–9pm  
Christchurch Weavers and Spinners Guildroom  
11 Tanner Street, Woolston  
Hear Margaret Stove's, QSM, remarkable experiences in lace knitting from New Zealand to the northern hemisphere. **Booking required:** Phone 021 027 18941 or email barbara.johns24@xtra.co.nz

## ACTIVITIES



### ADDING A TOUCH OF GOLD TO STITCHERY

**\$40**  
14 Oct, 9am–3pm  
Christchurch Weavers and Spinners Guildroom  
11 Tanner Street, Woolston  
An introduction to the art of goldwork to create stunning stitchery. **Booking required:** Phone 021 027 18941 or email barbara.johns24@xtra.co.nz

### FAMILY HISTORY OPEN DAY

**FREE**  
15–16 Oct, 10am–3pm  
401a Papanui Road, Papanui  
Research your hidden family history by viewing library resources.

### DOMESTIC STITCHERY THROUGH THE 1900s

**\$2**  
20 Oct, 7pm–9pm  
Christchurch Weavers and Spinners Guildroom  
11 Tanner Street, Woolston  
Celebrate the stitched history of the last century. **Booking required:** Phone 021 027 18941 or email barbara.johns24@xtra.co.nz

### REGENERATING CATHEDRAL SQUARE: MAD IDEAS THAT MIGHT WORK

**FREE**  
16 Oct, 2pm–3.15pm  
Novotel Hotel Square, Central City  
52 Cathedral Square, Central City  
Dr Geoffrey Rice expands on ideas presented in last year's forum on the future of Cathedral Square.

### EVER WONDERED ABOUT THE STORY OF YOUR HOUSE?

**FREE**  
18 Oct, 5.30pm–8.30pm  
Civic Offices, Level 1  
53 Hereford St, Central City  
Learn how to uncover the history of your house. **Booking required:** Email mreimer@heritage.org.nz or phone (03) 363 1882

### UNEARTHING FAMILY STORIES

**FREE**  
15 Oct, 1pm–4pm  
Parkview Community Lounge  
75 Queenspark Drive, Parklands  
Learn how to start unearthing your family history. Bring along any available family information.

### BE A TIME TRAVELLER!

**FREE**  
16 Oct, 10am–4pm  
The Arts Centre  
Enter from Worcester Boulevard  
Take a trip back through time, be an archaeologist for the day and unearth our past.

### TIPS AND TRICKS FOR EXPERIENCED LACE KNITTERS

**\$40**  
19 Oct, 9am–3pm  
Christchurch Weavers and Spinners Guildroom  
11 Tanner Street, Woolston  
Perfect your lace knitting skills with ideas gleaned from Margaret Stove, QSM (awarded for services to design knitted lace). **Booking required:** Phone 021 027 18941 or email barbara.johns24@xtra.co.nz

### RESTORING THE NURSES' MEMORIAL CHAPEL

**\$2**  
15 Oct, 1pm–4pm  
Christchurch RSA  
74 Armagh Street, Central City  
Find out the hidden stories uncovered during the restoration of the chapel and learn about the Marquette tragedy. **Booking required:** Email chapelc@xtra.co.nz



### ADDINGTON HERITAGE EVENING

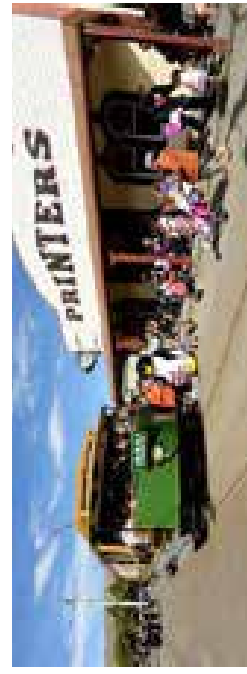
**FREE**  
18 Oct, 7pm–8.30pm  
St Marys Church, 30 Church Square, Addington  
Hear about the unearthing of the early history of the church and the people involved during its establishment in 1867. Musician Andy Thompson will entertain with songs which reflect our heritage.

### USE A PICTURE, STITCH A MEMORY

**\$40**  
20 Oct, 9am–3pm  
Christchurch Weavers and Spinners Guildroom  
11 Tanner Street, Woolston  
Bring along an image and create your own unique memory. **Booking required:** Phone 021 027 18941 or email barbara.johns24@xtra.co.nz

### THE BASICS OF KNITTED LACE

**\$40**  
18 Oct, 9am–3pm  
Christchurch Weavers and Spinners Guildroom  
11 Tanner Street, Woolston  
Margaret Stove, QSM, will guide participants in this class – suited to those who are already basic knitters. **Booking required:** Phone 021 027 18941 or email barbara.johns24@xtra.co.nz



### FERRYMEAD HERITAGE PARK FESTIVITIES

**\$15/\$40**  
23–24 Oct, 10am–4.30pm  
Ferrymead Heritage Park, 50 Ferrymead Park Drive  
\$15 per person/\$40 family pass  
Help Ferrymead Heritage Park celebrate its birthday. Come stroll around the park and ride the steam train and trams. With reduced admission charges it will be a great day out for the whole family.

### LOST BUILDINGS PRESERVED IN STITCH

**\$2**  
18 Oct, 7pm–9pm  
Christchurch Weavers and Spinners Guildroom  
11 Tanner Street, Woolston  
To help you stitch your own memories, a demonstration of stitching techniques will be shared. **Booking required:** Phone 021 027 18941 or email barbara.johns24@xtra.co.nz

### BEHIND THE TWISTED WIRE – THE ART OF WORLD WAR I

**FREE**  
19 Oct, 6.30pm–8.30pm  
St Barnabas Hall  
Fendalton Road, Fendalton  
See how New Zealand artists who served in World War I interpreted its horror. **Booking required:** Phone 385 4754 or 027 528 7257

### QUICK FIRE: HIDDEN HISTORIES

**FREE**  
16 Oct, 1pm–2pm  
The Bird Hall, Canterbury Museum  
Rolleston Avenue  
Hear fascinating tales in 7 minute bites. **Booking required:** Email bookings@canterburymuseum.com or call (03) 366 9429 ext.817

### TELL ME MORE: SHARING OUR STORIES

**\$ VARIOUS**  
21–23 Oct  
Commodore Airport Hotel  
449 Memorial Avenue,  
Come along to two days of presentations on a range of oral history topics. National Oral History Association of New Zealand Conference. **Booking required:** www.oralhistory.org.nz

14–24 Oct, 10am–4pm,  
Sundays/Labour Day 11am–3pm  
Lyttelton Information Centre  
20 Oxford Street, Lyttelton  
Look at life in New Zealand's only leper colony on Otamahua/Quail Island. Images from Lyttelton Museum's photograph collection. *Visit the site of the leper colony as part of the Otamahua/Quail Island tours 15–16 Oct.*

Heritage of Halswell Exhib.  
**MONDAY 17 OCTOBER**  
• At The Bay (17 Oct–27 Nov) Exhib.  
• A Journey Through Lace Talk  
• Knitting Tour  
• Spirited Cemetery Tour (Papanui) Tour  
• Hidden Histories of Riccarton House Tour  
• Heritage of Halswell Exhib.

### TUESDAY 18 OCTOBER

• Addington Heritage Evening Talk  
• Lost Buildings Preserved in Stitch Talk  
• The Basics of Knitted Lace Act.  
• Spirited Cemetery Tour (Apsvside) Tour  
• Hidden Histories of Riccarton House Tour  
• Ever Wondered about the Story of your House? Talk

### WEDNESDAY 19 OCTOBER

• Tips and Tricks for Experienced Lace Act.  
• Behind the Twisted Wire – the Art of World War I Talk  
• Spirited Cemetery Tour (Woolston-Heathcote) Tour  
• Hidden Histories of Riccarton House Tour

### THURSDAY 20 OCTOBER

• Domestic Stitchery Through the 1900s Talk  
• Use a Picture, Stitch a Memory Act.  
• Spirited Cemetery Tour (Bromley) Tour  
• Hidden Histories of Riccarton House Tour

### FRIDAY 21 OCTOBER

• Embroidery Treasures from Hidden Monastic Women Exhib.  
• Tell me more: Sharing our stories Talk  
• Spirited Cemetery Tour (Addington) Tour  
• Hidden Histories of Riccarton House Tour

### SATURDAY 22 OCTOBER

• 2016 Heritage Book and Writing Awards Talk  
• Embroidery Treasures from Hidden Monastic Women Exhib.  
• Spirited Cemetery Tour (Upper Riccarton) Tour

### SUNDAY 23 OCTOBER

• Ferrymead Heritage Park Festivities Act.  
• Discover how a Lighthouse Works Tour  
• Spirited Cemetery Tour (Sydenham) Tour  
• Open Day at the Malthouse Tour  
• Orton Bradley Park Spring Fair Act.

### MONDAY 24 OCTOBER

• Ferrymead Heritage Park Festivities Act.  
• Spirited Cemetery Tour (Linwood) Tour

20 September 2016

## Work notice: Simeon Quay, Lyttelton, storm water replacement

<b>What</b>	<b>Replacement of the earthquake damaged storm water pipe</b>
<b>Where</b>	<b>Simeon Quay, near house number 1</b>
<b>When</b>	<b>Monday 26 September for around two weeks</b>

### Where:



Sourced from LINZ data, Crown Copyright reserved

### Traffic impact:

From Monday 26 September for around two weeks a road closure will be in place near 1 Simeon Quay to replace an earthquake damaged storm water pipe. Due to the narrow width and the amount of conflicting services in that section of the road, it is not possible to open up the road at all during this time. Driveway access to all properties, and pedestrian access past the worksite will be maintained at all times. A short detour will be in place on Godley Quay and Voelas Road.

### Need more information?



**Call Fulton Hogan on:** 0800 277 34 34 (8.30am- 5.00pm Monday - Friday)



**Email Fulton Hogan at:** [rebuildinfo@fultonhogan.com](mailto:rebuildinfo@fultonhogan.com)



**Visit the SCIRT website:** [www.strongerchristchurch.govt.nz](http://www.strongerchristchurch.govt.nz)



Email: [info@scirt.co.nz](mailto:info@scirt.co.nz)  
[www.strongerchristchurch.govt.nz](http://www.strongerchristchurch.govt.nz)  
Follow us on Twitter @SCIRT\_info



**Fulton Hogan**

Christchurch  
City Council



Programme funded by

**New Zealand Government**



## Events

### WEDNESDAY OCTOBER 5<sup>TH</sup>

**Fat Tony's** 5-7pm  
Happy Hour

**Wunder Bar** 8pm  
Al Park and Elmore Jones

### THURSDAY OCTOBER 6<sup>TH</sup>

**Fat Tony's** 5-7pm  
Happy Hour

### FRIDAY OCTOBER 7<sup>TH</sup>

**Fat Tony's** 5-7pm  
Happy Hour

### SATURDAY OCTOBER 8<sup>TH</sup>

**Fat Tony's** 5-7pm  
Happy Hour

**Wunder Bar** 8pm  
Greg Copland and Steve Guitar Gillies NZ Tour  
\$20 door \$15 Eventfinda

### SUNDAY OCTOBER 9<sup>TH</sup>

**Fat Tony's** 5-7pm  
Happy Hour

**Freemans** 3.30-6.30pm  
Carmel Courtney and Friends

**Lyttelton Coffee Company** 8.30pm  
Writers Make with Music

### TUESDAY OCTOBER 11<sup>TH</sup>

**Lyttelton Club** 7pm  
Housie

**Wunder Bar**  
Open Mic and Showcase

### WEDNESDAY OCTOBER 12<sup>TH</sup>

**Fat Tony's** 5-7pm  
Happy Hour

**Wunder Bar** 8pm  
Al Park and Elmore Jones

### THURSDAY OCTOBER 13<sup>TH</sup>

**Fat Tony's** 5-7pm  
Happy Hour

**Wunder Bar** 9pm  
Voices of Unreason Black Thursday.  
Ben Brown, Rebecca Nash, Andy Coyle Popi  
Newberry

### FRIDAY OCTOBER 14<sup>TH</sup>

**Fat Tony's** 5-7pm  
Happy Hour

**Lyttelton Arts Factory** 7.30pm  
Factory Reasons to Be Pretty

### Wunder Bar

Mighty Duke & The Lords (Aus) 8pm  
Take a Dip Tour 8.30pm

**St Saviours at Holy Trinity** 7.30-9.30pm  
Dance towards the Light

### SATURDAY OCTOBER 15<sup>TH</sup>

**Fat Tony's** 5-7pm  
Happy Hour

**Lyttelton Coffee Company**  
Gatherings by Alex Davies

**Naval Point Club** 7pm  
Jack Broadbent \$30

### SUNDAY OCTOBER 16<sup>TH</sup>

**Fat Tony's** 5-7pm  
Happy Hour

**Freemans** 3.30-6.30pm  
Carmel Courtney and Friends

### SATURDAY OCTOBER 29<sup>TH</sup>

#### TEDxChristchurch 2016 360d

Local Lucie Ozane is one of the speakers. For tickets visit Eventfinda

## Galleries:

**50 Works Gallery:** 50 London St Lyttelton  
Gallery Group Show Oct 8th –Nov 6th

Thursday: 2:00 pm-4:00 pm

Friday: 2:00 pm-4:00 pm

Saturday: 11:00 am-4:00 pm

Sunday: 11:00 am-4:00 pm

**Lytel Gallery:** 20 Oxford St Lyttelton

Lyttelton Museum : A Place Apart

Look at life in Aotearoa / New Zealand's only leper colony on Otamahua / Quail Island. Images from Lyttelton Museum's photograph collection reveal the colony site and the lives of the patients who were quarantined there. *FPhoto: c.1924 Leper huts on Quail Island, Lyttelton Museum photograph collection at the Lyttelton Information Centre 20 Oxford St Lyttelton*

10am to 4pm daily except Sundays / Labour Day, 11am to 3pm

#### Oxford St Art:

**Ajay Sharma** Let us take you on a journey of Indian miniature paintings with the Master Mughal miniature painter AJAY SHARMA from Jaipur and his international students

(his 'Chela') 13 October – 13 November 13a Oxford St 11-5pm Wed-Sun.

## Community Activities in and around the Harbour this Week

### MONDAY

#### Community Choir

7.30pm Union Chapel, Winchester Street, Lyttelton.  
All welcome. Jillie 021 152 8068

#### Diamond Harbour Yoga

6.30pm - 8pm  
General Class  
Diamond Harbour Rugby Rooms

#### Lyttelton Youth Centre

3-7pm Drop in 10-20years  
4-6.30pm Carving Course  
7-9pm Boys Group 10-13  
7 Dublin St Lyttelton 328 7427

### TUESDAY

#### Community House

Shared Lunch 12.00pm 7 Dublin Street  
Make new friends

#### Diamond Harbour Yoga

6am - 7am  
Early Bird Class  
Diamond Harbour Stage Rooms

#### Lyttelton Health Qigong for Seniors

9.30am - 10.30am  
Union Church, Winchester Street \$5  
Geraldine Parkes 03 328 7284 or 027 644 4455

#### Lyttelton Library Storytimes

11.00-11.30am

#### Lyttelton Yoga

9.30am - 10.45am  
6.30pm - 8pm  
Scouts Den Lyttelton  
Contact Rebecca Boot 021 071 0336

#### Diamond Harbour Bridge Club

1.20pm for 1.30pm start  
Diamond Harbour Football Club Rooms. \$4 table  
For more information call 329 4868 or 329 4149

#### Lyttelton Library Science Alive

3.30-4.30pm

#### Lyttelton St John Youth Division

6.00pm St John Ambulance Station  
52 London St, Lyttelton

#### Lyttelton Youth Centre

2-8pm Drop In 10-20 years  
7-9pm Girls Group 10-13 years  
7 Dublin St Lyttelton 328 7427

#### St Josephs Worker Catholic Church

9am Mass 21 Exeter Street, Lyttelton  
All Welcome More information call 384 1600

Partner finder - Carolyn Craw. Ph 3294 279  
All welcome

#### Diamond Harbour Singers

7.30 - 9.00pm  
Every Wednesday in Stage Room of Community Hall. All welcome. Contact Margie 329 3331

#### Diamond Harbour Yoga

6am - 7am  
Early Bird Class  
Diamond Harbour Stage Rooms

#### Lyttelton Cubs

6.30pm Contact Mark Brabyn 027 281 6180

#### Lyttelton Garage Sale

10.30am 54a Oxford Street, Lyttelton  
Second Hand Bargains and more.

#### Lyttelton Harbour Fruit and Vegetable Collective

Trading between 12.30 and 2.45pm at the Garage Sale 54a Oxford St Lyttelton  
Contact Jill Larking for more info 027 237 4960

#### Lyttelton Library Wednesdays Knit and Yarn

10.00-12.00pm

#### Lyttelton Play Group

Lyttelton Playgroup  
At Kidsfirst Lyttelton  
12.30pm- 2.30pm  
33 Winchester St Lyttelton  
Call 03 328 8689 for more information

#### Lyttelton Youth Centre

3-6pm Underage Drop In 7-9 years  
6-8pm Drop in  
7 Dublin St Lyttelton 328 7427

### THURSDAY

#### Community House Flat Walking Group.

10am  
Contact Hannah Sylvester. Ph: 741 1427

#### Diamond Harbour Yoga

6am - 7am Early Bird Class  
Diamond Harbour Stage Rooms

#### Governors Bay Volunteer Fire Brigade

7.00pm Governors Bay Fire Station  
Weekly Training, New Members Welcome

#### Lyttelton Garage Sale

10.30am 54a Oxford Street, Lyttelton  
Second Hand Bargains and more.

#### Lyttelton Volunteer Fire Brigade

7.00pm Lyttelton Fire Station  
Weekly Training, New Members Welcome

#### Lyttelton Youth Centre

2-7pm Drop In  
7-9 Girls Group 10-13 years  
7 Dublin St Lyttelton 328 7427

### WEDNESDAY

#### Diamond Harbour Bridge Club

Bowling Club Rooms  
6.40pm for a 6.50 start

## Community Activities in and around the Harbour this Month

### FRIDAY

#### **Diamond Harbour Yoga**

6am - 7am Gentle Class  
Diamond Harbour Rugby Rooms

#### **Lyttelton Harbour Business Association**

Networking Meeting 9.30-10.30  
Fat Tony's  
17 London St  
More Info call 021 027 05450

#### **Lyttelton Garage Sale**

10.30am 54a Oxford Street,  
Lyttelton Second Hand Bargains and more.

#### **Lyttelton Library Fridays Babytimes**

10.30-11.00am

#### **Lyttelton Yoga**

9.30am - 10.45am  
Scouts Den Lyttelton  
Contact Rebecca Boot 021 071 0336

#### **Lyttelton Youth Centre**

2-7pm Drop In  
7-9 Girls Group 10-13 years  
7 Dublin St Lyttelton 328 7427

### SATURDAY

#### **Lyttelton Farmers Market**

10.00am London Street,  
Lyttelton Fresh produce, Live Music, Buskers and More

#### **Lyttelton Garage Sale**

10.00am 54a Oxford Street, Lyttelton  
Second Hand Bargains and more.

#### **Lyttelton Harbour Bazaar Market**

10.00am No 6 London St. Artists, Bric a Brac and More

### SUNDAY

#### **St Saviour's at Holy Trinity**

17 Winchester Street  
10.00am Service with Holy Communion  
2nd Sunday of every month only  
Port Hills Uniting Church Service  
10am Sunday Worship. All Welcome

## GROUPS

#### **Bay Harbour Toastmasters**

6.30pm. Every 2nd and 4th Wednesday of the month  
Lyttelton Community Board Room, 25 Canterbury St  
Contact: Jann Meehan, 021 263 1040

#### **Diamond Harbour Civil Defence**

7.00pm Third Wednesday of the month.  
Community Church Diamond Harbour  
Contact: Wendy Coles 0211541434

#### **Governors Bay Civil Defence**

7.00pm Third Wednesday of the month.  
Governors Bay Fire Station Contact  
Contact: Ian Palmer 3299 160

#### **Lyttelton Civil Defence**

7.00pm Third Wednesday of the month.  
Lyttelton Information Centre  
Contact: Wendy Everingham 021 047 6144

#### **Lyttelton Lions**

7.30pm Second Tuesday Each Month  
Lyttelton Community House  
Contact: Mary 03 328 8523

#### **Lyttelton Museum Historical Society**

Contact Liza Rossie 021 211 0832

#### **Lyttelton Netball Club**

Contact Flo McGregor flomac@xtra.co.nz

#### **Lyttelton Mt Herbert Community Board**

9.30am Third Wednesday Each Month  
Meetings Open to the Public

#### **Lyttelton Rugby Club**

For details visit the club Facebook Page or contact  
the club's Rugby Manager  
Nathan.mauger@gmail.com 021 111 6069

#### **Little Ship Club Canterbury**

We meet on the 3rd Thursday of the month usually  
at Naval Point Club Lyttelton from 7.00pm. The club  
has regular guest speakers and undertakes a large  
range of activities that increase the knowledge and  
skills and enjoyment of its members and for the  
benefit of yachting generally. All welcome  
[www.littleshipclubcanterbury.wordpress.com](http://www.littleshipclubcanterbury.wordpress.com)

#### **Lyttelton Time Bank**

10-4pm Tuesday to Friday. 20 Oxford St Lyttelton  
328 9093 [www.lyttelton.net.nz/timebank](http://www.lyttelton.net.nz/timebank)

#### **Lyttelton Toy Library**

Located at the Lyttelton Rec Centre Squash Court  
25 Winchester St. Open each fortnight on Saturday  
morning 10-12 noon. For more information  
see Facebook Lyttelton Toy Library or email  
[lytteltontoylibrary@gmail.com](mailto:lytteltontoylibrary@gmail.com) or call Helen 021 075  
4826

#### **Naval Point Old Salts Lunch**

The Old Salts Lunch is being held on the 2nd  
Tuesday of every 2nd month with the next one being  
held next Tuesday, 10th February starting @ 12:00  
with 2 course lunch commencing @ 12:45.  
Contact Barry Bowater 329 4828 or 0272743520

#### **St Joseph the Worker R.C.Church**

5.30pm Mass 3rd Sunday of the month. Parish House  
21 Exeter Street Lyttelton.  
For more information call 384 1600

## PLACES TO STAY

<b>B@B Settlers Retreat</b> 153 Governors Bay Road	021 186 5220 021 144 2979	thackergj@slingshot.co.nz Hosts: John and Gaynor Thacker
<b>Governors Bay Bed and Breakfast</b> Governors Bay Road, Governors Bay	03 329 9727	gbbedandbreakfast.co.nz Host: Eva
<b>Governors Bay Hotel</b> 52 Main Road, Governors Bay	03 329 9433 021 611 820	governorsbayhotel.co.nz Host: Jeremy and Clare
<b>Harbour Lodge</b> 1 Selwyn Road, Lyttelton	027 242 7886	info@harbourlodge.co.nz www.harbourlodge.co.nz
<b>Il Sogno Bed &amp; Breakfast</b> 58 Koromiko Crescent Church Bay		ilsogno@snap.net.nz Host: Graeme and Angela
<b>Little River Camping Ground</b> 287 Okuti Valley, Little River	03 325 1014 021 611 820	littlerivercampground.co.nz Host: Marcus
<b>Orton Bradley Park Camper Van Stay</b> Marine Drive, Charteris Bay	03 329 4730	ortonbradley.co.nz Host: Ian
<b>Out Of The Window Bach</b> Diamond Harbour	03 328 7677 027 8774691	Min 2 nights
<b>The Rookery</b> 9 Ross Terrace, Lyttelton	03 328 8038	therookery.co.nz Host: Rene and Angus

## HEALTH, BEAUTY, FITNESS

<b>Christchurch Yoga</b> Scout Den, Charlotte Quay, Lyttelton	021 071 0336	Christchurchyoga.co.nz Instructor: Rebecca Boot
<b>Honey Comb</b> 34 London Street, Lyttelton	03 328 8859	honeycombhair@extra.co.nz or see our facebook page
<b>Doterra- Essential Oils</b>	021 560 586	dawncowan025@gmail.com Dawn Cowan



# thelyttelldirectory

2015 | 2016 your call to support local businesses around the harbour

## THINGS TO DO

<b>Black Cat Cruises   Quail Island Adventure</b> B-Jetty, Lyttelton Wharf [Below Oxford Street]	03 328 9078 0800 436 574	blackcat.co.nz
<b>Christchurch Gondola</b> 10 Bridle path Road, Heathcote valley	03 384 0310	welcomeaboard.co.nz
<b>International Antarctic Centre</b> 38 Orchard Road, Christchurch Airport	0508 736 4846	iceberg.co.nz
<b>Jack Tar Sailing</b> Dampier Bay Marina, Lyttelton	03 389 9259 027 435 5239	jacktarsailing.co.nz Skipper: Mike Rossouw
<b>Orton Bradley Park</b> Marine Drive, Charteris Bay	03 329 4730	ortonbradley.co.nz
<b>Naval Point Club</b> Our Ocean Water Sports Club	03 328 7029 027 379 9212	www.navalpoint.co.nz

## LOCAL EXPORTS

<b>Lyttelsoft</b> Specialising in Accounting Software	03 328 8671	lyttelsoft.co.nz Meet: Penny Mercer
<b>Real Homes New Zealand Limited</b> PO Box 94, Lyttelton	03 390 3393 021 224 6637	realhomes.co.nz Real Estate Agent: Lynnette Baird
<b>Masonry Works</b> Architectural Stonemason and Brickwork	021 0816 6983	masonryworksnnz@gmail.com www.masonryworks.net
<b>Saunders &amp; Co</b> 1063 Ferry Road, Ferrymead	03 940 2435 022 133 6963	saunders.co.nz
<b>All Clear Chimney Cleaning</b> Chimney's gutters, fires and difficult maintenance jobs.	03 329 4772 0224 4010203	allclearchimneycleaning.co.nz brunoallclear@gmail.com
<b>Furnishscene</b> Specialising in curtains, blinds, shutters, interior design and color consultancy. Meet Laura, Karen and Bridget	03 977 4630	furnishscene.co.nz

## EAT, DRINK, DINE

<b>Roots Restaurant</b> 8 London Street, Lyttelton	03 328 7658	rootsrestaurant.co.nz Meet: Giulio and Christy
---	-------------	---

*Buy your*

# LYTTELTON HARBOUR GIFT VOUCHERS

*Here*



**Sold at the**  
Lyttelton Harbour Information Centre, 20 Oxford St Lyttelton