

# “ Lyttelton review ”

lyttelton harbour community update

www.lytteltonharbour.info

17 October 2011  
E16



## Trawler on Dublin Street

New Steel Fishing Trawler Moves to the Water

“It’s always amazing when you see a fishing trawler literally being “berthed” from the Starks workshops in Dublin Street” said Wendy Everingham, as the fifth trawler emerged from the workshop on Wednesday October 12<sup>th</sup>.

The 16.8metre steel fishing trawler was built just around the corner from the Lyttelton Harbour Information Centre, at the Dublin Street facility for Stark Brothers. With the road closed for this delicate operation there were loads of on lookers as the trawler emerged slowly but gently from the workshop for its road trip down to the base of number seven wharf.

“The moving of this massive object, weighing in at over 82 tonnes utilised the local resources and skills of Smith Cranes Limited, who lifted the vessel using their 300 tonne mobile crane” said Andrew Stark. Moving new vessels from Starks Dublin Street workshop is always challenging due to the hillside location.

After moving the trawler to the water, the “A” frame and mast will be fitted, and it will then be moved to the dock wharf where final fit out will continue, through to comprehensive sea trials. Delivery and launching, including the reveal of the trawlers name, is scheduled for early December 2011.

The 16.8metre fishing trawler was designed and built by Stark Bros Limited of Lyttelton. For each vessel built there is a core team of 4-5 workers working full time, however during the entire building phase most people in the company have a role to play in the construction of the vessel.

This vessel is yet another example of the skills and capabilities from the team at Stark Bros Limited who have served this community so well, for so many years, and from a team who have shown a consistent drive to build very successful fishing trawlers to high specification, with each new vessel building on the success of the previous ones.

The vessel is being built for Ocean Fisheries Limited, an associated company of Stark Bros Limited. The plan is to add this vessel to the current Ocean Fisheries fleet of Frontier [19metres], Jubilee [16metres] and Nessie J [13metres].

What a great news story for Lyttelton. Andrew Stark said “It’s generated a lot of positive interest from the local and broader community”.

.../ continued

## “ Lyttelton review ”

Lyttelton Review is a community newsletter initiative designed to keep harbour residents informed with what is going on. Learn about community groups; businesses; events; and everything in between. We are not affiliated with any particular group or organisation - just a group of vibrant like minded unpaid volunteers striving to give an independent, and uncensored voice. Here at the Lyttelton Review, we love news, ideas and information. If you have an event, topic, cause, or other, that you would like to share with the harbour community, then we would love to hear from you. Be heard, be seen, be informed - read it or offer it here:

[infocentre@lyttelton.net.nz](mailto:infocentre@lyttelton.net.nz)

Lynnette Baird  
021 224 6637

Wendy Everingham  
021 047 6144

65 London Street

Thursday Deadline  
Published Monday

Lyttelton Review is  
sponsored by:

Lynnette Baird  
Licensed Real Estate Agent  
021 224 6637

[www.realhomes.co.nz](http://www.realhomes.co.nz)  
[www.kre.co.nz](http://www.kre.co.nz)



... New Steel Fishing Trawler Moves to the Water

### Technical Detail:

Vessel Name:	Under wraps until official launching in early December 2011
Length:	16.8 metres
Beam:	5.6 metres
Draft:	3.2m
Operating Displacement:	100 tonnes
Main Engine:	Scania DI1259M [350HP]

The vessel is similar to the Stark designed and built FV Jubilee which was launched in 2008, it will once again sport a SCANIA DI1259M engine, driving a Hundested Marine Gear CPG-32 9.05:1 gearbox with a Hundested Variable Pitch 1800mm diameter.

This higher gear ratio and larger propeller running in a fixed nozzle should provide this vessel with significant fuel savings over the previous vessels. The electronics package will also sport the new WASSP system from Electronic Navigation, which the company is convinced will be an excellent additional tool for the skipper to increase catch efficiency. The Trawl Winches, Net Rollers, and Deck Lifting Equipment are also of Stark Brothers design and construction.

Article: Lyttelton Harbour Information Centre : Stark Brothers  
Images: Lyttelton Harbour Information Centre : Andrew Stark - Stark Brothers





# Recovery Needs Businesses to Open

Lyttelton Harbour Business Association

Andrew Turner, Chairperson of the Lyttelton Harbour Business Association, updates us on what has been happening within that organisation:

“ The Lyttelton Harbour Business Association had its committee meeting last week, with new committee members Will Lomax [Structex]; Peter Evans [Volcano Café]; and Ray Blake [MacTodd Lawyers], taking their seats at the Committee table for the first time.

Last week, Sarah Van Der Burch [Lyttelton Community Association], Wendy Everingham [Project Lyttelton] and Lynnette Baird [Lyttelton Harbour Information Centre] joined the Lyttelton Harbour Business Association Committee for a productive and positive discussion about opportunities for greater community engagement with the Lyttelton Master Plan.

The meeting also saw much discussion about barriers to economic recovery, in particular planning regulations and Building Act requirements which have been strictly applied by the Council, causing the reopening of some Lyttelton businesses to be delayed.

As a result, Will Lomax will be putting together a piece on the current situation as regards building permits and resource consents – in effect a guide to Christchurch City Council’s actual current application of the Building Act and the Resource Management Act to building repairs and rebuilds; rather than any previously communicated situation or theoretical application.

This will be with the aim of avoiding further difficulties for commercial building owners and tenants, hopefully allowing this prior knowledge to make future situations less complicated so that more businesses can reopen faster. This information will go onto the Lyttelton Harbour Business Association website, and the newsletter, and will be of interest mainly to those with businesses or commercial buildings who are affected.

The Lyttelton Harbour Business Association and Christchurch City Council are also working together to develop a joint seminar in the near future which will focus on immediate and short-term challenges to economic recovery. It is envisaged this session will also address information needs regarding the placement of temporary structures, and will be widely publicised once a date is set.

And on a positive note, in association with Recover Canterbury and the Bay Harbour News, the Lyttelton Harbour Business Association will be rolling out an advertising campaign raising the awareness of Lyttelton and promoting our local businesses. Watch out for this in the Bay Harbour News soon.

For more information on the work of the Lyttelton Harbour Business Association, please contact Andrew Turner [andrew.turner@clear.net.nz](mailto:andrew.turner@clear.net.nz) or [admin@lytteltonharbour.net.nz](mailto:admin@lytteltonharbour.net.nz).

Article: Lyttelton Harbour Business Association  
Image: Lynnette Baird



“ community ”

Check out these local informative web sites:

Lyttelton Harbour  
Information Centre  
[www.lytteltonharbour.info](http://www.lytteltonharbour.info)

Diamond Harbour  
Community Information  
[www.diamondharbour.info](http://www.diamondharbour.info)

Governors Bay  
Community Information  
[www.governorsbay.net.nz](http://www.governorsbay.net.nz)

Lyttelton Forum  
[www.lytteltonforum.org.nz](http://www.lytteltonforum.org.nz)

Lyttelton Harbour  
Business Association  
[www.lytteltonharbour.co.nz](http://www.lytteltonharbour.co.nz)

Naval Point Yacht Club  
[www.navalpoint.co.nz](http://www.navalpoint.co.nz)

Project Lyttelton  
[www.lyttelton.net.nz](http://www.lyttelton.net.nz)

It is amazing how much is happening in each of these communities as volunteers produce many interesting stories about living in the Lyttelton Harbour.

“ snippets ”

### SPARC RURAL TRAVEL FUND 2011-2012

SPARC Rural Travel Fund is open to rural sports clubs and rural school teams in Akaroa, Little River and Diamond Harbour with young people aged between 5 and 19 who require subsidies to assist with travel expenses to local sporting competitions.

This year the rural travel fund will also cover schools or clubs in the Banks Peninsula area whose facilities have been affected by the earthquakes and who now need to travel to undertake their sport and/or recreation activities as a result of this damage.

Please note that this fund is not for the purpose of travel to regional or national events.

Applications close on Saturday 5 November 2011.

Application forms are available from:  
CCC Lyttelton Service Centre OR the Lyttelton Recreation Centre.

Forms can also be downloaded from [www.ccc.govt.nz/community/funding](http://www.ccc.govt.nz/community/funding)

Contact:  
Maggie Button  
03 941 5656  
[maggie.button@ccc.govt.nz](mailto:maggie.button@ccc.govt.nz)



## An Emotional Farewell

Holy Trinity Lyttelton

A good crowd of local people stood silently as Bishop Victoria and Vicar Neil Struthers held a Service for the deconsecration of our Holy Trinity Church. A much loved community place for Anglicans and the wider community, the building and land were deemed no longer a sacred place. Parishioner John Cleaver expressed the desire for a new church for the people of Lyttelton and the Bishop gave hope that a new church would rise if it was supported by local people. The much loved church was then piped farewell by Vicar Neil Struthers. Andrea King, the warden left feeling hopeful and commented "the future for a new church is brighter than expected".

Article: Lyttelton Harbour Information Centre  
Image: Wendy Everingham

## Naval Point Club History

Scout Regatta 1966

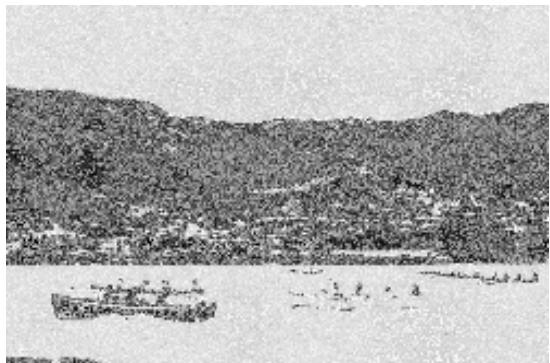
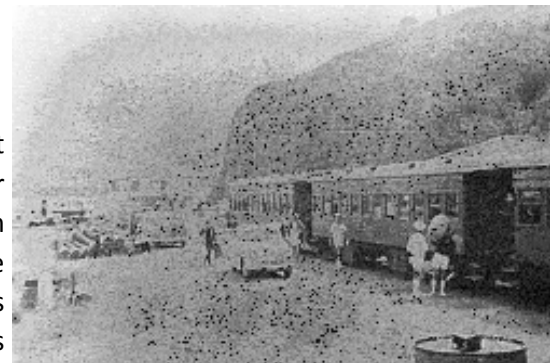
The set of three small photos in a frame on the east wall of the Naval Point Club Wardroom is a reminder of a National Sea Scout regatta hosted by the then Canterbury Yacht and Motor Boat Club in 1966. The scouts were from the National Jamboree which was being held at Rangiora for several hundred Scouts and Sea Scouts.

The sea Scouts were transported to Lyttelton by a special train each day to take part in their heats and finals in sailing, rowing and seamanship. The special train delivered them right to the clubhouse as seen in the top picture. Evidence of the railway still remains with a portion of a rail showing through the tar seal at the top of the slipway near the club house parking area. The rails were the end of the line and terminated in a small fenced in coal bunker area. It also housed a steam driven crane on a railway wagon.

The middle picture shows the original clubhouse, built in 1956-57, without the kitchen addition on the east end, and the toilets on the west. The picture also shows the narrow start of the main slipway. Previously all boats launched from the slip into Magazine Bay, being trolleyed along between the Club and the cliff.

Note: There will be another National Sea Scout regatta at the Club at Easter 2012

Article: Naval Point Club Lyttelton  
Images: Naval Point Club Lyttelton





# Rebuilding Lyttelton's Fishing Industry

New Facility Planned by Lyttelton Port of Christchurch

Lyttelton Port of Christchurch, in partnership with Independent Fisheries Limited, plans to construct a new wharf and cool store that will breathe new life into the fishing industry at Lyttelton after the earthquakes.

The earthquakes caused substantial damage to Z-Berth and the Independent Fisheries Limited cool store previously located on it. The cool store was condemned and has been demolished, as Lyttelton residents have no doubt noticed. Z-Berth is no longer usable for cargo.




The new facilities will provide a necessary boost for the fishing industry, which is important to Lyttelton and the regional economy. It provides jobs, and contributes to economic growth and people's livelihoods. In particular, fishing is an essential and historic part of Lyttelton's special character.

The loss of Z Berth and the cool store has been a blow to the industry, and a number of fishing vessels have been obliged to move to other ports. This has resulted in loss of business for the Port, and for local marine, engineering and supply businesses as well. The new facilities will be a very positive move for the long term wellbeing of the harbour community.

The Lyttelton Mt Herbert Community Board has agreed to the stopping of a portion of Cyrus Williams Quay for the development. Boaties can be assured that Lyttelton Port of Christchurch will continue to provide access to the Inner Harbour slipway so that they can use it in inclement weather. In a letter to the Chair of the Community Board dated 17 May 2011, Chief Executive Peter Davie confirmed that "Lyttelton Port of Christchurch will continue to allow the public access to the slipway." Improvements will be made to the slipway area. Lyttelton Port of Christchurch is also encouraging Christchurch City Council to fully develop Naval Point to cater for all users in all weather.

Article: Lyttelton Port of Christchurch

Image: Lyttelton Port of Christchurch

-  Independent Fisheries Limited Cool Store
-  Road Purchase from Christchurch City Council
-  New Wharf Structure



## “ snippets ”

### WEEKLY BUS SERVICE

Don Ross's weekly bus service will not be operating on Labour Day, Monday 24th October.

With the introduction of the Metro Route 535 from Lyttelton to Eastgate, Don's last bus service will operate on Monday 31st October.

Departing from outside the Lyttelton Recreation Centre at 10.00am; and returning at 12.30pm. Diamond Harbour residents will be met from the Ferry.

Contact Don Ross: 03 328 8793 or 0274 317 360 for more details.

### VOLCANO RADIO

Carmel Courtney would like to get all the Volcano DJ's and support Crew together for a general discussion and "nut out" for the first week of November.

Suggestion is Saturday or Sunday afternoon, 5<sup>th</sup> or 6<sup>th</sup> November.

Carmel is looking to kick the station back into gear, ready for December.

Contact Carmel directly if you are interesting in getting Volcano Radio back on air!

## “ snippets ”

### LYTELTON PETANQUE COURT

Expert tuition available for free every Saturday during the month of October from Andrew and his supporters from the Christchurch Petanque Club.

It would be great to see more of the community down at the Petanque Court to accept this generous gift of time and expertise.

Instructors will be available, weather permitting, every Saturday in October from 11am 'til 1pm. You can turn up whenever it suits you and stay for as long or as little as the day permits.

### ORTON BRADLEY

All walking tracks are open again now that lambing season is over. For fresh air, exercise and stunning scenery, Orton Bradley Park is hard to miss.

The Banks Peninsula Zone Committee has been formed after being postponed earlier in the year due to the Canterbury earthquakes. The Banks Peninsula Zone Committee features five community members as well as four Rūnanga representatives and two from council. The community members are Pam Richardson, Yvette Couch-Lewis, Stephen Lowndes, Richard Simpson and Kevin Simcock. The Rūnanga appointees are Iaeon Cranwell, June Swindells, Elliot Briggs and Pere Tainui. The two Council representatives are Environment Canterbury Commissioner Donald Couch and Christchurch City Councillor Claudia Reid.

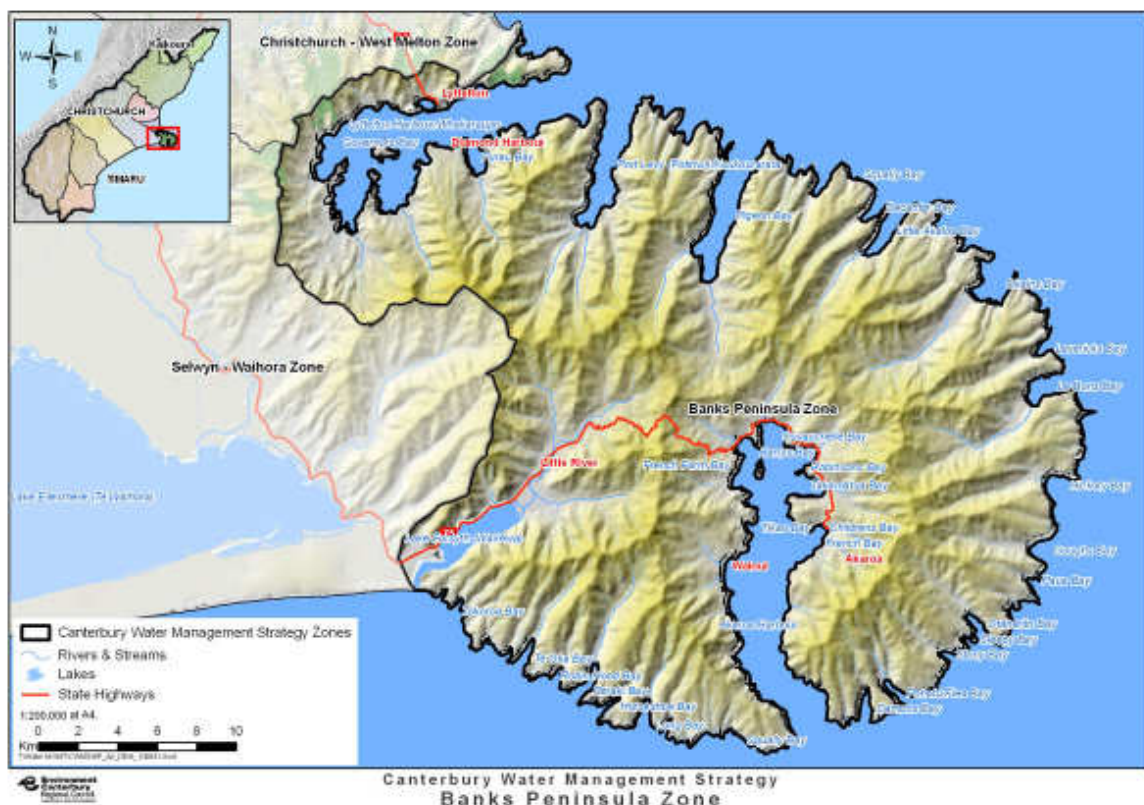
The Banks Peninsula water management zone committee was officially launched on 23 September to begin addressing local water issues using the goals and methods developed via the Canterbury Water Management Strategy. The Banks Peninsula Zone committee will meet on the third Tuesday of each month to gather information about the region and its water resource with the goal of developing a Zone Implementation Programme [ZIP] for the management of the region's water.

Banks Peninsula Zone Committee will meet for its first public meeting:  
Tuesday 18 October, 4pm  
Society Lodge, Ferrymead Heritage Park, Ferrymead.

At the meeting the zone committee will hear presentations on issues relevant to water management in the zone. These include the state of the water in the zone, cultural values, and a biodiversity overview of the zone. The zone committee will also discuss the progress of the Regional Committee and select a committee member to represent the Banks Peninsula zone at Regional Committee meetings.

In addition the committee is planning a series of public meetings later in the year to listen to the community's feedback about water issues in the zone. If you belong to an organisation that may be interested in meeting with the Banks Peninsula Zone Water Management Committee, so you can have the opportunity to share your thoughts and ideas on the priority outcomes for the zone, you are invited to contact ECAN:

Email:	<a href="mailto:ecinfo@ecan.govt.nz">ecinfo@ecan.govt.nz</a>	Phone:	03 353 9007
Web:	<a href="http://www.ecan.govt.nz">www.ecan.govt.nz</a>	Visit:	58 Kilmore Street, Christchurch
		Post:	PO Box 345, Christchurch 8140







# HELP US BE DARING BY YOUR CARING

## Dare to Care

Support Canterbury Business

It's just over one year since the first Christchurch earthquake and there are still so many people in need of help. People whose homes were wrecked, people whose hearts were broken, people who lost their jobs and their livelihood. Many Christchurch businesses are struggling to keep their heads above water.

The rest of the country has given and given to help our Canterbury country folk but many are in hard times themselves and it's getting harder to donate. One Christchurch business has come up with a simple way to help without having to put your hand in your pocket. She Chocolat in Governors bay has devised a logo to put on Christchurch made products so that New Zealanders can continue to buy their everyday items, but choose the brands which are based in Christchurch and thus help a business to survive.

It's a simple idea which enables us all to help in our day to day lives. All New Zealanders will be able to easily identify and buy Christchurch made products and services. By buying these branded items, they will be helping businesses, families, communities and the city rebuild. Bob Parker, Mayor of Christchurch, says "It's great to see another group determined to help Christchurch get back on its feet. Every effort of this kind puts us one step closer to recovery."

"Businesses, just like people, need support, encouragement and inspiration. The time for handouts has passed, it is time for positive action. For New Zealand to grow, Christchurch needs to regain its momentum in the commercial space." says campaign creator, Declan Scott.

"The strength required to continue standing in the face of greater challenges and continual earthquakes takes great courage and commitment. Look for the logo and help the businesses of Christchurch help us be daring, by you caring." says Declan. For more information on the campaign go to [www.daretocare.co.nz](http://www.daretocare.co.nz) or contact: Declan Scott 027 695 8922.



“ snippets ”

### NAVAL POINT CLUB LEARN TO SAIL

Learn to Sail - The first two courses of a Holiday Learn to Sail Programme using Club Optimists at Naval Point has been running this week.

The programme is aimed at young sailors who cannot sail at the usual learn to sail venues due to earthquake damage.

The programme instructors are Hayley Anderson, Michael Anderson and Josie Dawber of Naval Point Club Lyttelton.

### NAVAL POINT CLUB TWILIGHT RACING

Wednesday Twilight Race One was held this week. A good fleet of 24 boats including three dinghies took part in a very pleasant evening of sailing.

The winners were:

**Keelboats:**  
Wildwood  
Viki Moore n' Crew

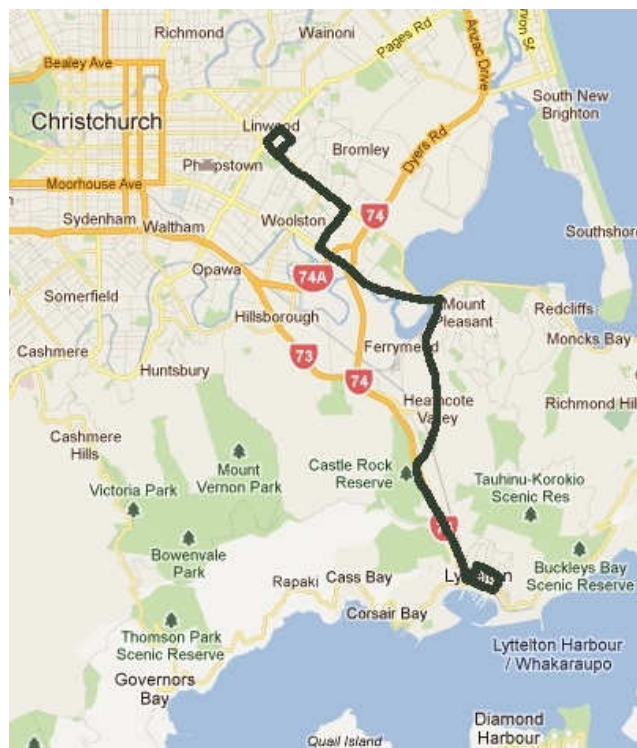
**Trailer Yachts:**  
Berwick  
Dave Hawke n' Crew

**Dinghies:**  
29er  
Daniel Morrison n' Crew

## Metro Route 535

Lyttelton to Eastgate via Ferrymead

On Tuesday October 25, the new Central Station, in Lichfield Street [behind Ballantynes] will be operating. A new Metro network map will be delivered to all Christchurch house holds from mid next week, which includes a new map of the Central Station. At the same time as Central Station opens, Environment Canterbury are introducing three new routes. One being Route 535 connecting Lyttelton to Eastgate. This service will not continue through to the city as the, now redundant, Route 35 used to do, but rather connections from Eastgate to the City will be available.



## Sail Away This Weekend

Meridian Aviemore Classis

Labour weekend’s Meridian Aviemore Classic promises exciting fresh water yacht racing and guaranteed family fun and entertainment. This event is the largest Trailer Yacht event in the South Island and is expected to be as popular as ever with entries from both serious and recreational trailer sailors from around the country.

Organised by the Timaru Yacht Club on Labour Weekend the event will offer the usual Meridian Aviemore Classic racing for all divisions, including a non spinnaker division for all ratings. The weekend will also include class championships for Noelex 22, 25 and Farr 6000 classes. Including the N22 and N25 South Island Championships.

About 90 boats will take part in the two-day regatta on Lake Aviemore between Kurow and Otematata. Organisers say the best place for members of the public to see the sailing action are either at the top of the lake, near Parson’s Point (where the start and finish line is) or around the Aviemore dam area where the boats sail. The event the event is the first regatta of the season and is eagerly awaited by sailors, the local community and spectators.

Check out the Notice of Race details on the Naval Point Club Lyttelton entry notice board.

Article: Naval Point Club Lyttelton

Image: Otago Trailer Yacht Squadron – Murray Watson



## Sculpture on the Peninsula

South Island's Largest Outdoor Sculpture Exhibition

What: Sculpture on the Peninsula

Where: Loudon Farm, Charteris Bay Road, Teddington  
Between Governors Bay and Diamond Harbour

When: Friday 4th November, 5pm - 9pm

Grand Opening Night \$60.00 per person  
Reserve your tickets on line

Saturday 5th November 9am - 5pm

Admission \$10 per person  
Children under 12 are free

Sunday 6th November 9am - 5pm

Admission \$10 per person  
Children under 12 are free

For more details visit: [www.sculpturenz.co.nz](http://www.sculpturenz.co.nz)





“

# the mail box

”

October 2011

The Lyttelton Review has been designed with community in mind. It is a tool to communicate what is going on; what is new; and to reflect what you are thinking. Here at the Lyttelton Review we love receiving your feedback; so write to us and tell us what is on your mind:

Editors: [lynette.baird@gmail.com](mailto:lynette.baird@gmail.com)  
[wendy.everingham@xtra.co.nz](mailto:wendy.everingham@xtra.co.nz)  
 Admin: [infocentre@lyttelton.net.nz](mailto:infocentre@lyttelton.net.nz)

Fresh out of the mailbox this week:

**Council process  
helping you to  
make it happen**

Yeah right.



**Spread the Message** - Not everyone in the Harbour Region receives these news letters; so please pass them onto anyone you think would be interested. We can also arrange printed copies for interested parties - just let us know.

**Errors, Omissions and Typos** - are part and parcel of a volunteer service. These quirky additions are offered free for your amusement. But, if we have "got it wrong" - please just let us know.

**What's Happening** - A big thank you to every one who emails us with what is happening in their part of Lyttelton Harbour paradise. If you have news, or belong to a community group, own a business - get in contact with us, we would love to promote or share your story with the Lyttelton Harbour district.

“

# the notice board

”

October 2011

Cynthia is a unisex hair dresser with 17 years experience. She can cut your hair at her home, or at your home if you are house bound. Call Cynthia for an appointment - 328 9547 or 027 201 3394

Free pet food is available for people who look after displaced or lost pets; or if you need pet food for whatever reason. Contact Paul 027 555 1292

Any old books will be gratefully received by those organising the Lyttel Book Affair - a second hand book sale, fundraising event scheduled for 2012. Deliver to the Lyttelton Harbour Information Centre, in the port-a-com at 65 London Street - or phone Lynnette 03 328 7707 to arrange collection.

Aji - exotic ingredients; ethnic spice pastes and curry blends - best quality ingredients for home and professional baking. Make your own truffles, ganache, souffles, tortes and brownies with our pure Dutch cocoa. Location: 189 Mt Pleasant Road, Mt Pleasant. Open Mon, Tues, Thurs, Fri 3.00pm to 5.00pm. Open Saturday 1.30pm to 4.00pm. Open Sunday 11.00am to 2.00pm. No appointment necessary.

**Can You Help? Or How Can We Help You?** If you can help out any of these people, or would like to include a request for our next newsletter, please contact us at the Lyttelton Harbour Information Centre. Phone 03 328 9093 or email us at: [infocentre@lyttelton.net.nz](mailto:infocentre@lyttelton.net.nz)

**Spread the Message** - Not everyone in the Harbour Region receives these newsletters, so please pass them onto anyone you think would be interested. We can also arrange printed copies for interested parties - just let us know.

**What's Happening** - A big thank you to everyone who emails us with what is happening in their part of Lyttelton Harbour paradise. If you have news, or belong to a community group, own a business - get in contact with us, we would love to promote or share your story with the Lyttelton Harbour district.

**Errors, Omissions and Typos** - are part and parcel of a volunteer service. These quirky additions are offered free for your amusement. But, if we have "got it wrong" - please just let us know.



# “ community groups ”

October 2011

## Lyttelton Harbour

- Civil Defence** New members welcome. Meet first Thursday of every month, 6.00pm at the Lyttelton Recreation Centre. Next meeting November 3rd. To become involved contact the Area Co-ordinator, Ken Maynard, on 03 328 9553.
- Lyttelton Community Association** New members welcome. As an issues based organisation, we do not hold regular meetings. If you have a concern which you think has wide spread relevance, or if you would like to be advised of when the next meeting will be held, please email us at LCAssn@vodafone.co.nz or phone 03 328 9553.
- Lyttelton Community House** Meals for the elderly continue to be prepared and delivered daily. If you know of any elderly residents who need this service, please contact Christine or Sheryl 03 741 1427.
- Lyttelton Food Bank** Donations or collections can be arranged at:  
Lyttelton Community House, 7 Dublin Street, Lyttelton  
Lyttelton Harbour Information Centre, 65 London Street, Lyttelton  
Project Lyttelton, 54a Oxford Street, Lyttelton
- Lyttelton Harbour Business Association** For more details visit: [www.lytteltonharbour.co.nz](http://www.lytteltonharbour.co.nz)
- Lyttelton Harbour Information Centre** Monday to Friday 11.00am to 3.00pm; Saturday 10.00am to 1.00pm; Sunday 11.00am - 2.00pm.
- Lyttelton Time Bank** Monday to Friday, 10.00am-2.00pm. Either Bettina, Jen or Lisa will be available at the Lyttelton Harbour Information Centre, Monday, Wednesday and Friday 11.30am - 12.30pm. Or phone: 021 806 406
- Lyttelton Youth Centre** Youth Centre/Community House, 7 Dublin Street, Lyttelton. Contact Christine 03 741 1427 for further details.
- Plunket Playgroup** From September 5th Plunket Playgroup will held every Monday and Wednesday. Still located at the Lyttelton Recreation Centre, from 10am - 12noon. For more details, contact Lisa York-Jones 03 328 8918 \$0.50 attendance fee to cover costs.
- Project Lyttelton** The Portal, 54a Oxford Street, Lyttelton [located behind the Swimming Pool]. Office 03 328 9243.
- Time Bank Garage Sale** All donations of good used, or new, household items greatly accepted. Please do not donate items that cannot be sold, as this increases our costs trying to take unwanted items to the charity barn, or worse still the rubbish depot.
- Toy Library** Sessions are now on Thursdays each week from 7.30pm to 8.30pm at the Lyttelton Recreation Centre. For more details, contact Roz Jenkins 03 328 8552.
- Volcano Radio** Currently - Off Air

**Spread the Message** - Not everyone in the Harbour Region receives these newsletters, so please pass them onto anyone you think would be interested. We can also arrange printed copies for interested parties - just let us know.

**What's Happening** - A big thank you to everyone who emails us with what is happening in their part of Lyttelton Harbour paradise. If you have news, or belong to a community group, own a business - get in contact with us, we would love to promote or share your story with the Lyttelton Harbour district.

**Errors, Omissions and Typos** - are part and parcel of a volunteer service. These quirky additions are offered free for your amusement. But, if we have "got it wrong" - please just let us know.

# “ Lyttelton timebank ”

October 2011



Connect with the Lyttelton Time Bank Team:  
Bettina, Jen or Lisa : 021 806 406

Email: [timebank@lyttelton.net.nz](mailto:timebank@lyttelton.net.nz)  
Web: [www.lyttelton.net.nz](http://www.lyttelton.net.nz)

Available at the Lyttelton Harbour Information Centre  
Monday - Wednesday - Friday : 11.30am to 12.30pm

## What is Time Banking?

Time Banking is a way of trading skills in a community. It uses time, rather than money, as the measurement tool. Members of a Time Bank share their skills with other members within the community and are given time credits for the work they do. With the credits they gain, each member can 'buy' someone else's time, and get the service they need.

## Why Join Lyttelton Time Bank?

Time Banking adds a richness to Time Bankers' lives. As a concept it brings 'wealth', in the form of friendship, caring for one another, having our needs met from within our own community and getting help with things we can't do. Skills that are often taken for granted are valued - especially non-market economy skills - like mothering, basic home help and caring, friendliness, listening.

In Lyttelton as a result of the Time Bank we can see a tighter community forming. Friendships are forming between people of different backgrounds who would not usually have met. The elderly are being cared for and the skills they share are valued. Special needs people are encouraged to participate. Time Banking builds relationships and trust in a community. Everyone has something they can contribute to the wellbeing of the whole.

## Everyone's Time is Equal

With Time Banking everybody's time is equal, no matter what type of work is done. 1 = 1. If you give one hour's work, you receive one hour time credit. If you have another member do one hour's work, they are paid one hour time credit. Every person is equally valued.

## Here are a few examples of what Lyttelton Harbour residents are giving and receiving this week - can you help?



I would love a couple of helpers with the children's activities this Friday. No special skills needed, liking children and a big smile would help though. Even one hour between 11 and 1 would be a big help! - says Bettina at TimeBank



I am a solo Mama of three children, and I have never used a lawn mower before! I need someone to help me the first time, and perhaps help me for an hour in the garden? I would be so grateful to receive some help with this! - says Rachael



Gift Voucher for one round of 18 holes of golf at Terrace Downs to give away. Expires on 16 November. - says Bettina at TimeBank



We make fresh organic ice cream that we would love to share with others. The current flavours we have are caramel, chocolate, and vanilla that we can do in 500g freeze-able glass jars. We could also do a trade?? eggs for ice cream? milled flour for ice cream?? - says Christy & Giulio

## Can You Help? Or How Can We Help You?

If you can help with any of these requests, or would like to include a request of your own, please contact the Time Bank team.



# “harbour events guide”

October 2011

## October

<b>17</b>	Lyttelton Recovery Plan	7.30pm	Lyttelton Recreation Centre	Lyttelton/Mt Herbert Community Board
<b>18</b>	Lyttelton Mt Herbert Board	1.30pm	Lyttelton Recreation Centre	Open Meeting for Residents
<b>22</b>	Mastering Petanque Class	11.00am	Lyttelton Petanque Club	Christchurch Petanque Club - Free
<b>22</b>	Lyttelton Musicians Club	7.00pm	Naval Point Yacht Club	Mermaid and Mariners - \$10.00
<b>23</b>	Orton Bradley Park Fair	All Day	Orton Bradley Park	<a href="http://www.ortonbradley.co.nz/events">www.ortonbradley.co.nz/events</a>
<b>26</b>	Welcome Mat	12.00pm	Governors Bay Fire Station	Meet residents and network
<b>28</b>	Lyttelton Mt Herbert Board		Closing Date for Agenda Items	For November 15 Board Meeting
<b>29</b>	Mastering Petanque Class	11.00am	Lyttelton Petanque Club	Christchurch Petanque Club - Free
<b>30</b>	Contra Dance	7.00pm	Lyttelton Recreation Centre	Tickets: <a href="mailto:harbourarts21@gmail.com">harbourarts21@gmail.com</a>

## November

<b>03</b>	Civil Defence	6.00pm	Lyttelton Recreation Centre	Ken Maynard 03 328 9553
<b>04</b>	Sculpture on the Peninsula	Open Night	Loudon Farm, Teddington	Ticket sales: <a href="http://www.sculpturenz.co.nz">www.sculpturenz.co.nz</a>
<b>05</b>	Sculpture on the Peninsula	All Day	Loudon Farm, Teddington	Outdoor Sculpture Exhibition - \$10
<b>05</b>	Canterbury Regatta	All Day	Naval Point Yacht Club	Ken Camp 03 328 7029
<b>06</b>	Sculpture on the Peninsula	All Day	Loudon Farm, Teddington	Outdoor Sculpture Exhibition - \$10
<b>10</b>	Community Board Chat	5.00pm	Lyttelton Library	Chat to your community board
<b>15</b>	Lyttelton Mt Herbert Board	1.30pm	Lyttelton Recreation Centre	Open Meeting for Residents
<b>22</b>	Commodores Raft Up	All Day	Naval Point Yacht Club	Ken Camp 03 328 7029
<b>25</b>	Lyttelton Mt Herbert Board		Closing Date for Agenda Items	For December 13 Board Meeting
<b>26</b>	General Elections		Polling Booth Details to Come	Check out <a href="http://www.referendum.org.nz">www.referendum.org.nz</a>
<b>26</b>	Art in the Park	All Day	Orton Bradley Park	
<b>27</b>	Art in the Park	All Day	Orton Bradley Park	

## December

<b>08</b>	Community Board Chat	5.00pm	Lyttelton Library	Chat to your community board
<b>13</b>	Lyttelton Mt Herbert Board	1.30pm	Lyttelton Recreation Centre	Open Meeting for Residents

## Lyttelton Harbour Network

For news, events, and what is open or closed around the Harbour Basin, don't forget to visit:

Diamond Harbour Information  
Governors Bay Information

[www.diamondharbour.info](http://www.diamondharbour.info)  
[www.governorsbay.net.nz](http://www.governorsbay.net.nz)

# “ what’s on lyttelton ”

October 2011

## Monday

			Contact	Phone	Start Date	Notes	Price
Belly Dancing [Beginner]	6.00pm	Recreation Centre	Paige	03 328 8883			
Belly Dancing [Advanced]	7.30pm	Recreation Centre	Paige	03 328 8883	October 31	Seven weeks	\$90.00
Childrens Belly Dancing	3.45pm	Recreation Centre	Paige	03 328 8883	October 31	5-8 year old	
Childrens Belly Dancing	4.45pm	Recreation Centre	Paige	03 328 8883	October 31	5-12 year old	
Goju Kai Karate	5.00pm	Recreation Centre	Pat	03 328 8333	October 31	5-12 year old	\$140.00
Pilates	7.15pm	Recreation Centre	Jennifer	03 328 7002			
Plunket Play Group	10.00am	Recreation Centre	Lisa	03 328 8918			\$0.50
Strictly Dancing	8.30pm	Recreation Centre	Sharan	03 354 5021	October 31	Five weeks	\$55.00
Tai Chi/Qigong	10.30am	Recreation Centre	Geraldine	03 328 7284			

## Tuesday

			Contact	Phone	Start Date	Notes	Price
Community Lunch	12.30pm	Community House					
Pre School Music Box	10.00am	Recreation Centre	Lynda	03 328 9191	October 25		\$3.50
Recreational Gymnastics	3.45pm	Recreation Centre			October 25	5-7 year old	\$68.00
Recreational Gymnastics	4.45pm	Recreation Centre			October 25	8 years +	\$68.00
Salvation Army	10.00am	London Street				Available to Help	
<del>Story Time - PreSchool</del>	<del>11.00am</del>	<del>Lyttelton Library</del>					<del>Free</del>
Tumble Times	1.45pm	Recreation Centre			October 25		\$3.50
Yoga - General	9.30am	Recreation Centre	Rebecca	03 328 8889			\$14.00
Yoga - General	6.30pm	Recreation Centre	Rebecca	03 328 8889			\$14.00

## Wednesday

			Contact	Phone	Start Date	Notes	Price
Community Garden	10.30am	The Portal	Sue-Ellen	03 328 9243			
Japanese Jikyojutsu	10.30am	Recreation Centre	Maki	03 328 8197			\$2.00
Jiu Jitsu - Sakura Kan	6.00pm	Recreation Centre	Duane	03 328 9990	October 26	13 years +	\$5.00
Plunket Play Group	10.00am	Recreation Centre	Lisa	03 328 8918			\$0.50
Pre School Tumble Times	1.45pm	Recreation Centre		03 941 5656			\$3.10
Yoga - General	7.90pm	Recreation Centre	Rebecca	03 328 8889			\$14.00

**Expose Your Event by Adding to the “What’s On Lyttelton” List**

Send us an email: [infocentre@lyttelton.net.nz](mailto:infocentre@lyttelton.net.nz) or give us a call, with all the details, and we will add it here, absolutely free.



# “ what’s on lyttelton ”

October 2011

## Thursday

			Contact	Phone	Start Date	Notes	Price
Circuit Class	9.15am	Recreation Centre	Heidi	03 942 6677			\$5.00
Dare2Dance	7.30pm	Recreation Centre	Jan	03 328 8977			\$5.00
Functional Fitness- Seniors	10.30am	Recreation Centre			October 27		\$4.00
Hip Hop Dance	4.30pm	Recreation Centre	Breeze	03 328 7338	October 27		\$56.00
Preschool Gymnastics	2.00pm	Recreation Centre			October 20	Seven weeks	\$49.00
Toy Library	7.30pm	Recreation Centre	Roz	03 328 8552			
Yoga - Post Natal	12.00pm	Recreation Centre	Rebecca	03 328 8889			\$14.00
Yoga - Pregnancy	6.15pm	Recreation Centre	Rebecca	03 328 8889			\$14.00

## Friday

			Contact	Phone	Start Date	Notes	Price
Goju Kai Karate	5.0pm	Recreation Centre	Pat	03 328 8333	November 4	5-12 year old	\$140
<del>Story Time - Baby</del>	<del>10.30am</del>	<del>Lyttelton Library</del>					<del>Free</del>
Yoga - General	9.30am	Recreation Centre	Rebecca	03 328 8889			\$14.00

## Saturday

			Contact	Phone	Start Date	Notes	Price
Farmers Market	10.00am	Lyttelton Main School			Every Week	Fresh Food	Free
Grassy Art Market	10.00am	Lyttelton Main School			Every Week		Free
Lyttelton Garage Sale	10.00am	The Portal			Every Week		Free

## Sunday

			Contact	Phone	Start Date	Notes	Price
Combined Church Service	10.00am	Union Parish Church					

**Expose Your Event by Adding to the “What’s On Lyttelton” List**

Send us an email: [infocentre@lyttelton.net.nz](mailto:infocentre@lyttelton.net.nz) or give us a call, with all the details, and we will add it here, absolutely free.

# “ business directory ”

October 2011

## Lyttelton

Acupuncture Therapy	Open	18 Oxford Street	03 328 9053	Robin Kerr
Bank of New Zealand	Open	56 London Street	0800 80 04 68	
Beauty by Carly	Open		021 294 5676	Carly Miller
Bells Pharmacy	Open	50 London Street	03 328 8314	
Christchurch Council Service Centre	Open	35 London Street	03 941 8999	Debbie/Patricia
Coastal Living / Picture Framers	Open	34 London Street	03 328 7350	
Coffee Culture	Open	18 London Street	03 328 7080	
Fishermans Wharf	Open	39 Norwich Quay	03 328 7530	
Four Square Supermarket	Closed			
Himalaya Design	Open	20 London Street	03 328 7600	Thurs-Sun
London Fish and Chips	Open	34 London Street	03 328 8819	
London Street Books	Open	48 London Street	03 328 8088	Thurs-Sun
London Street Dairy	Open	34 London Street	03 328 7358	Open 7 Days
Leslies Bookshop	Open	18 Oxford Street	03 328 8292	
Lyttel Beauty	Open	32 Voelas Road	03 328 7093	
Lyttel Piko	Open	12 London Street	03 328 8544	
Lyttelton Bakery	Open	34 Norwich Quay	03 328 9004	
Lyttelton Barber	Closed			
Lyttelton Harbour Information Centre	Open	65 London Street	03 328 9093	
Lyttelton Library	Open	35 London Street	03 941 7923	
Lyttelton Health Centre	Open	18 Oxford Street	03 328 7309	
Lyttelton Physiotherapy	Open	18 Oxford Street	03 328 8111	
Lyttelton Recreation Centre	Open	25 Winchester Street	03 941 5656	
Lyttelton Sea Foods	Open	26 Norwich Quay	03 328 7628	
Lyttelton Service Station	Open	1 Canterbury Street	03 328 8749	
Lyttelton Shuttle	Open	Airport, City, Anywhere	0800 08 07 06	
Lyttelton 'Top' Club	Open	23 Dublin Street	03 328 8740	
Mac Todd Solicitors	Open	24 Dublin Street	03 328 9992	
Min Sarginson Real Estate	Open	53 London Street	03 328 7273	
Mitre Tavern	Closed			
Portico	Open	48 London Street	03 328 8088	Thurs-Sun
Professionals Real Estate	Open		03 328 7707	
Project Lyttelton Office	Open	54a Oxford Street	03 328 9243	
Pulp Kitchen	Open	35 London Street		
Ray White Real Estate	Open		03 331 6757	
SAMO Coffee	Open	5 Canterbury Street		Open 7 Days
Sno Clothes	Open	23 Randolph Terrace	03 328 8584	Heather
Storm Hairdressing	Open	34 London Street	03 328 8859	Sally
The Irish Pub	Closed	17 London Street	03 328 8085	
The Loons	Closed			
The Stables Wellness Centre	Closed			
Volcano Radio	Off Air		03 328 8566	
Wunderbar	Closed			

# “ business directory ”

October 2011

## Governors Bay

Governors Bay Hotel	Open	52 Main Road	03 329 9433
She Chocolate	Open	79 Main Road	03 329 9825
Living Springs	Open	Bamfords Road	03 329 9788

For news, events, and what is open or closed in Governors Bay, visit: [www.governorsbay.net.nz](http://www.governorsbay.net.nz)

## Diamond Harbour

Orton Bradley Park	Open	Marine Drive	03 329 4730
--------------------	------	--------------	-------------

For news, events, and what is open or closed in Diamond Harbour, visit: [www.diamondharbour.info](http://www.diamondharbour.info)

# “ meeting venues ”

October 2011

## Lyttelton

Lyttelton Club “Top Club”	Meeting Room	Open	23 Dublin street	03 328 8740
Lyttelton Harbour Information Centre	Boardroom	Open	65 London Street	03 328 9093
Lyttelton Recreation Centre	Meeting Room	Open	25 Winchester Street	03 941 5656
Lyttelton Recreation Centre	Trinity Hall	Open	25 Winchester Street	03 941 5656
Naval Point Yacht Club	Wardroom	Open	Naval Point	03 328 7029
Project Lyttelton	Meeting Room	Open	54a Oxford Street	03 328 9243

## Governors Bay

Living Springs	Open	Bamfords Road	03 329 9788
----------------	------	---------------	-------------

## Diamond Harbour

Diamond Harbour Community Hall	Hall	Open	Waipapa Avenue	03 329 4119
Diamond Harbour Community Hall	Stage Room	Open	Waipapa Avenue	03 329 4119
Orton Bradley Park - Boardroom	Open	Marine Drive	03 329 4730	



# “ accommodation ”

October 2011

## Lyttelton

- **Dockside Apartments.** Three private apartments enjoying harbour views, now open and available for casual holiday or short term occupancy. Scenic and so close to London Street, this is an ideal option for friends or family to stay. Options range from studio; one bedroom or two bedroom apartment. Tariff from \$90 - \$120 per night. Phone Grant or Kathy on 03 325 5707 or view more details online [www.dockside.co.nz](http://www.dockside.co.nz).
- **Flat Mate.** Wanted to share sunny house with mature female and feline friend. Fully furnished, the north facing room is available at \$140 per week plus share of expenses being power, phone and wireless broadband. Great views and sunny aspect in an earthquake safe house. Available now. Call Michelle 03 328 8020 or 027 416 0625.
- **Flat Mate or boarders** wanted for short term family accommodation. Two furnished bedrooms available in large warm modern family home with parking and great views. Short walk to bus, London Street, and schools. Includes separate lounge and bathroom. \$150 negotiable per room, per week, plus expenses. Can include wireless and separate sky box. Meals and laundry could be provided if required, for extra. Phone Jan 328 8893 or 021 554 001.
- **Lyttelton Studio.** One bedroom studio flat in Lyttelton available for rent. A short walk to London Street, and deemed very safe by EQC. Ideally suited for one person. Fully furnished; self contained; warm and sunny with a north facing aspect. Rent \$220 per week, plus power, phone and wireless broadband. Call Michelle 03 328 8020 or 027 416 0625.
- **The Rookery.** Built in 1866 The Rookery Bed and Breakfast is one of the oldest surviving local cottages, with wonderful panoramic views of the historic port town of Lyttelton, the main harbour, Quail Island, surrounding hills and volcanic cliffs. Three beautifully renovated rooms are available; one with ensuite facilities. Tariff from \$115 - \$160 per night. Phone Angus or Rene Macpherson on 03 328 8038 or view more details on line [www.therookery.co.nz](http://www.therookery.co.nz).

## Diamond Harbour

- **House for Rent.** Lovely four bedroom retreat available for cat lovers and conscious caring people only. Rent negotiable above \$300 per week for the right people. Email Paru at [info@journeyessence.com](mailto:info@journeyessence.com) for more details.
- **Mt Evans Bed and Breakfast** offers accommodation in two self contained cottages. Quiet rural setting only 500m from the beach. For further information contact Pauline 03 329 4414 or visit [www.mtevansbnb.co.nz](http://www.mtevansbnb.co.nz)
- **Orton Bradley Park** can offer self contained camper van sites for overnight stays. Services include 15 powered sites; treated drinking water; toilet blocks and dump site, with the golf club and tennis court next door. Fees start from \$15.00 per night for two persons, with additional adults at \$6.00 per night. Tent camping is not permitted, as we are unable to provide the facilities, and are unable to deal with waste water disposal. Contact 03 329 4730.
- **Waimarama Studio** available for rent. Short or long term stay. Two bedrooms, completely self contained, overlooking the garden and harbour. Very warm, clean and comfortable accommodation. Tariff \$200 per week plus power. View more details online [www.bookabach.co.nz/2456](http://www.bookabach.co.nz/2456) or phone Karen 03 329 3006.

## Governors Bay

- **Governors Bay Bed and Breakfast** offers a place to relax and rejuvenate on nine acres to bush side paradise beside the harbour. Enjoy breakfast on the deck while listening to the native bird song. Furnished room with ensuite bathroom and separate sitting area also available for short term rent for those seeking emergency accommodation. For more details contact Eva on 03 329 9727, or view on line [www.gbbedandbreakfast.co.nz](http://www.gbbedandbreakfast.co.nz).
- **Living Springs** offer an array of accommodation options from fully service private rooms, studios, twin rooms, shared bunkrooms to outdoor camping. Also available are some powered caravan sites. All rooms are clean, comfortable and well maintained for your relaxation. Contact Living Springs on 03 329 9788 or view more details on line: [www.livingsprings.co.nz](http://www.livingsprings.co.nz).