

Next issue date: 28th June

LYTTELTON REVIEW

June 2016 • Issue: 168

PURAU • DIAMOND HARBOUR • CHURCH BAY • CHARTERIS BAY • GOVERNORS BAY • RAPAKI • CASS BAY • CORSAIR BAY • LYTTELTON



IN THIS EDITION:

- New Happenings on London St
- Timebanking Creating New Opportunities
- Lyttelton Harbour Festival of Lights

Next Issue print date: 28th June 2016.
Content Deadline: 24^h June 2016.

Review Creators

Lyttelton Harbour Review is a 100% voluntary community newsletter initiative developed after the February 2011 earthquake. It's a Lyttelton Harbour Information Centre initiative produced by Chairperson Wendy Everingham and Committee Member Jenny-Lee Love.

The objective of the Lyttelton Harbour Review is to help keep local residents informed with what is going on in the wider Lyttelton Harbour community. Of course the success of the Lyttelton Harbour Review could not be possible without the ongoing support and enthusiasm from the wider community.

A big thank you goes out to everyone who sends information; is willing to be interviewed or lets us know what might be happening in the neighbourhood. The Lyttelton Harbour Review project would not be possible without you all.

If you have an event, topic, sport announcement, fundraiser or cause that you would like to share with the harbour community, then Wendy or Jenny-Lee would love to hear from you:

Wendy Everingham
Office: 328 9093
Mobile: 021 047 6144
Email: infocentre@lyttelton.net.nz
Content Deadline: 5pm Friday

Jenny-Lee Love
Email: lytteltonreview328@gmail.com

Subscribe to the Review:
Email either Wendy or Jenny-Lee with the words "Subscribe Me" in the subject line and the Lyttelton Harbour Review will be delivered to your inbox.

In 2016 the Lyttelton Harbour Review is produced fortnightly. Any important information between times will be emailed as a Lyttel Broadcast if necessary.

Hard Copies of the Review are available at:
Fat Tony's
Lyttelton Community House
Lyttelton Harbour Information Centre
Lyttelton Library
Lyttelton Top Club

Back Copies Available to Download:
www.lytteltonharbour.info



Maori Carving Course Four Places Available

Whakaraupo Carving Centre in Lyttelton is running the Tane tu Tane Ora Course, with the generous support from Red Cross. This course is designed to help men over 16 to find a new passion and sense of belonging and identity through carving.

The Course starts as soon as the final four places are filled. It's 3 days a week - Monday, Tuesday, Wednesday, 10.00am - 3pm ...and will run until the end of the year. Lunch is also provided.

If you know someone who is over 16 years of age and would benefit from this course, get them to give us a call on (03) 741 1410 or phone Caine Tauwhare (Kaiwhakairo) direct 027 35222 88.

Whakaraupo Carving Centre is a not-for-profit community organisation providing mentorship and education in the art of Whakairo - the ancient Maori art of carving. There are a limited number of places available on this course, so do not hesitate to be a part of it. Ring now!

Whakaraupo Carving
30 Godley Quay
Lyttelton



Cakes For Greatness

Introducing our 34th Cake for Greatness recipients, Andreas and Jodi. They moved to Lyttelton around 7 years ago and we are unfortunately losing them to Christchurch, but not without a Cake for Greatness thank you.

Not only has Andreas served as a dedicated volunteer on our local Lyttelton fire brigade, but he has also spent the majority of Sunday mornings teaching our children basic soccer skills for free down at the Lyttelton rec centre.

Encouraging children to learn a sport, introducing them to possibly their first experience of a team and getting lots of exercise is highly commendable in my books. The mantra 'if you can run, you can play' is positive and encouraging for the less confident children and promotes an 'anyone can do this' ethic. Such a valuable lesson for children.

On most Sunday's all year round you'll see kids running around, playing fun games and exercises as well as playing a game of soccer with kids their own age. This dedication meant not always being able to go away at weekends and spending many additional hours planning training and fundraising for equipment. Jodie has assisted also by setting up and maintaining the website, keeping everyone informed on what Lyttel Soccer is all about.

So many children and parents have benefitted from Andreas' commitment, enthusiasm and infectious energy. What a great service to share with our community. Whilst Andreas may have stepped away from Lyttel Soccer, Mick continues to run the show and I urge you to support them on Sunday mornings. I am sure new friendships have been formed by both parents and children alike and I have no doubt that Andreas and Jodie will be missed by everyone here.

Thank you to the many people who nominated Andreas, it's nice to have found a fitting time to share this thank you.

Cake for Greatness wouldn't exist without nominations from our greater community. If you know of any unsung heroes from the Lyttelton harbour or Christchurch please send me a nomination. You can send me a private message here or through my website; www.rushanis.co.nz.

Also, check out my website for details of past recipients of Cake for Greatness.

Looking to find out more about Cake for Greatness actually is? Check out my short Pecha Kucha presentation here: <http://www.pechakucha.org/presentations/cake-for-greatness>



Lots of New Happenings on London St

Seems to be a flurry of new things on London Street...

Rushani's

Remember the former bakery site? At last a new business is starting up on the site. Welcome to Rushani's new London Street business. Aiming to open the week of the Festival of Lights this new café will offer her always interesting, delicious and hand crafted food.

Rushani's
always interesting, always delicious

13 London Street,
Lyttelton

022 013 4099
www.rushanis.co.nz



Coffee Culture

This week we said goodbye to Emily and Samira from Coffee Culture. After five years of service to the Lyttelton community they are moving onto new pursuits. The good news is the business continues and Leona Cooper is the new owner (below).



Sweet Thursday.

Anthea Struthers is the passion behind Sweet Thursday. Formerly God Save the Queen the new business is very similar offering quirky affordable fun items to the wider community. Open 10-4pm Tuesday to Saturday 12-4 Sunday.





Come and join the “Zumba Gold” class for an hour from 11:30am on Fridays at the Recreation Centre!

The tutor, Mele Paoese, says that it is a low impact workout for beginners that is aimed at those more mature community members who are still “young at heart” but is open to any age group. It is held in the large, warm and spacious hall and Mele often brings refreshments for the end of the class such as fruit, cake and cheese and crackers. The cost is \$5 per class and you pay on the day.

It is great for balance and co-ordination and the music makes you want to move! You can work at any level that suits you and take a break whenever you feel like it. It is sociable and great fun and an easy way to get to know others in the community. A group come over from Diamond Harbour each week and head for the ferry after the class. Changing facilities are available for use in the Rec Centre but most people just turn up in something warm and comfortable that they can exercise in.

The idea was thought of by Ellen Graham who contacted Mele to see if she was interested in starting a class in Lyttelton. Delyse Langhorn helped to put it all together.

So be sociable, come along, and have some fun on a Friday morning. A good way to set yourself up for the weekend!

Zumba Gold is for our lovely active young at heart, beginner participants, low-impact workout, makes them happy, its social - great way to meet others, good for balance and coordination, for any age or fitness level, enjoy music and have fun!!!!

Encourage all my lovely zumbafam go at their own pace having fun. The music is motivating and fun, so you’ll be smiling, happy and energized!

Thank you, catch up again soon.

Regards

Mele Paoese
0212165039



Article Liz Briggs. Lyttelton resident



New People – Old Skills

Timebanking Creating New Opportunities

New Zealand has always been a home for new immigrants. Barbi Larkins came to these shores in 2001. An American national she'll never forget the day she arrived. Leaving JFK Airport New York on September 9th 2001 she was flying to the southern hemisphere when the skies above New York turned to carnage. New Zealand was calling and her Australian partner was waiting for her to begin a new life in Rangiora. With a son who loved the idea of Sea Cadets and Barbi who loved trees her family made the move over to Cass Bay in 2013.

The Lyttelton Harbour Timebank was one of the first things that Barbi joined when she arrived this side of the hill.

"Time banking helped me to get to know some new people. I'm quite shy by nature and this made initial introductions much easier".

Looking through the Time Bank data base since her arrival Barbi has been involved in 18 trades. Her graphic design skills have come in very handy for

lots of people in the wider community. She's helped design posters for a conference, a logo for the Waste Matters Project, invitations for celebrations at Stoddart Cottage and the most recent trade has been updating the Fruit and Vegetable Collective logo for the very successful affordable fruit and vegetable scheme that operates every Wednesday.



"I trained in graphic design quite a few years ago. The unfortunate thing for me was it was the era when you learnt the skills manually. Then computers became the new medium for graphic design and all the jobs when I graduated required that."

Needing work and not getting graphic design jobs I reinvented myself and ended up doing lots of administration work for many years.

As time passed Barbi discovered that graphic design truly was her passion. Moving to Cass Bay and being able to build up her skills for the community via the Timebank re-invigorated her passion for design and our community has been the lucky recipient as she upskilled with the projects that were on offer. All the projects that she volunteered for on the Timebank helped build up a portfolio that showed she could indeed do design work.

Just when she thought everything was coming together and she did get a job locally in the field she loved, graphic design, things came crashing down. She discovered she had breast cancer! A short time afterwards she was made redundant. Now as she recovers from that experience she's decided to take control and run with her passion.

If you come across the Furry Faces Pet Portraits leaflet around town, that is Barbi's new venture. She loves animals, loves drawing and design so she's joining all the dots and creating herself a job that ticks all the boxes. Custom pet portraits crafted from your high resolution photos Take a look at www.furryfaces.co.nz to get an idea of what's she's creating.

It's great to see our community and in particular the Timebank network providing opportunities for people to re-discover their passions. Then to translate into them feeling confident and supported to develop something new, is a great outcome.

Article Lyttelton Harbour Timebank



The Nukes

Due to popular demand The Nukes UkuleleTrio returns to Canterbury after an Easter Feast of ukulele antics with the Canterbury Folk Festival out at Waipara . This mid winter warmup for the Geraldine Folk Festival (July 8-9) kicks off at the Wunderbar in Lyttelton on Friday July 1st from 8 pm with local nine piece 'The Secret Lives Of Ukulele'the future of ukuleles - and cigar-box guitars too!

'Ukulele will never be the same'

The Nukes from West Auckland are far more than an ukulele band. They are high entertainment. Part vaudeville, part rat-pack, part musical car crash. This talented trio deliver an engaging mix of humour and originality that audiences love. The innocent little uke is the instrument of choice and audiences will be staggered by what they are able achieve with it. Great song writing, musicianship and 3-part harmony combine to create a truly memorable experience.

Rollicking and rolling out of the woolliest corners of Auckland's wild west, it's..... The Nukes, New Zealand's most feared and revered original ukulele trio. Comprised of Dave "Fingers of fire" Parker, David "Snapper" Thiele and Benjamin "Country boy" Collier, The Nukes have a reputation for reckless and riveting live shows where a fine blend of folk, bluegrass, reggae and post punk is caressed, coaxed and beaten out of three innocent wee ukuleles.

Here's what a few festival directors have said

- "There was overwhelming positive audience feedback from the concert (Spiegeltent-Taranaki Arts festival) and was one of the reasons I brought them back for WOMAD ".

Drew James Artistic Director WOMAD / Taranaki Arts Festival

- "The Nukes blew the audiences' socks off with the combination of humour, fantastic song-writing, great musicianship and singing" Megan Peacock-Coyle. Oamaru Opera House.
- "the Nukes experience is uplifting, fun and feel- good" Amanda Wright. Erupt Festival.

From out of the primordial swamps and fault lines of Otago-Christchurch The Secret Lives of Ukuleles bring you the future of ukuleles - and cigar-box guitars too! Nothing if not eclectic; The Secret Lives of Ukulele play everything from Hank Williams to Kylie Minogue taking in Tiki Taane and Oasis along the way. The Secret Lives of Ukuleles play whatever they want – especially for you!

The Secret Lives of Ukulele are: Annie, Carl, Emily, Maree, Paul (ukuleles), Lance (cigar-box guitars), Peter (bass guitar), Lynden (drums) and Louise (guesting on violin and Rarotongan ukulele).

Pre sale tickets online at eventfinda for \$12 with Door Sales if any \$15

The Nukes also perform at a number of Primary schools over there stay from July 1 through 7 including Lyttelton , Diamond Harbour and Little River , These visits include ukulele workshops that involve performance with the Nukes in the all school shows that follow .

Public Appearances as follows

Friday July 1st Wunderbar Lyttelton 8pm with 'Secret Lives Of Ukulele '

Sunday July 3rd All Ages afternoon workshop from 2pm at Preserved Eatery Diamond Harbour – workshop bookings recommended on www.preserved.co.nz/product/1394954....

For the 3-5 pm show all primary school children are free with a paying adult .

The first two people to email infocentre@lyttelton.net.nz will receive a complimentary double pass at the Wunderbar or a signed cd.

Part vaudeville, part rat-pack,
part musical car crash!



The Nukes

with special guests The Secret Lives of Ukulele

FRIDAY 1st JULY

Doors open 8pm, Show 8.30pm

@The Wunderbar

London Street, Lyttleton

For BOOKINGS

\$12 + BF presales online @

www.eventfinda.co.nz

Door sales \$15





The Garage Sale is settling in well to its new home behind the pool. From April community groups have returned to raise funds. A total of \$9896.90 has been raised in April and May. This money went to the following organisations:

• Lyttelton Timebank	\$938.20
• Tree of Hope	\$315
• Lyttelton Reserve Management Committee	\$310
• Lyttelton Lions	\$564
• Lyttelton Museum	\$250
• Diamond Harbour Singers	\$195
• Lyttelton Under 13 Rugby	\$390
• Lyttelton Anglicans	\$280
• Community House	\$280
• Garage Sale	\$6374

A big thank to all the wonderful volunteers who make this run so smoothly. Valda Smith who is endlessly sorting through all your terrific donations. Robyn Dunnage who is always there to help if needed. Mike Hore, who always has a smile for every customer on Friday mornings, Michelle Parkes who creates the most amazing window displays and Emma Ridden who has such a keen eye for displaying things. There are also a few others who help regularly. Thank you to everyone.

Last but not least the wider community for without your donations and support the garage sale would not exist.

Winter Hours
10.30 -4pm Wednesday, Thursday Friday
10-1pm Saturday

Article Garage Sale



THE BIG QUIZZ

RAISING MONEY FOR
LYTTELTON
COMMUNITY HOUSE
TRUST

Great prizes

**Happy Hour
all night**

Lots of laughs!

7pm Wednesday 22nd June
On The Deck @ Freemans

**Teams of 4
\$60 per team**

Pop in and register your team with us or
call 328 7517 for more information



Cycling in the city...

The options for Lyttelton people who want to cycle in Christchurch are limited following the closure of Evan's Pass post earthquakes. But you can still take your bike through the tunnel on the bus (or on your own car) and ride from there. It's great for health and wellbeing, the environment and saves you money on parking and petrol!

If you choose to take public transport, is worry about the bus already having its bike quota on board a barrier? Have you experienced missing out and have had to wait for the next bus?

Do you want to have your say- or be part of a focus group - to look at other options to enable cycling in the city? ECAN representatives and possibly CCC are keen to join with us for collective problem solving. Please email Meg meg.christie@cdhb.health.nz or give me a ring: 378 6817 .

Correction re Kilwinning Lodge Article

I have just read the article on "Kilwinning Lodge No 23" or to give it its correct title "The Canterbury Kilwinning Lodge No 23".

Contrary to your article, the lodge building was not sold because of dwindling numbers but because the cost of maintaining the building meant members had less funds for charitable activities in the district.

The lodge is still very active and a strong lodge with many of its members originating from Lyttelton and the surrounding bays thus continuing its close association with the area. It meets monthly at the Shirley Freemason Centre in Christchurch but still concentrates where possible its benevolence and charity activities in this area.

Should your readers wish to find out more about Freemasonry, Canterbury Kilwinning Lodge No 23 or consider they may know of a charitable need, they may contact either: Dave Hannah, Phone: 027 631 3231 or Ian Johnston, Phone: 03 384 9030

Yours sincerely

Rob Angelo, Grand Master Southern Division.

Cholmondeley Children's Centre Update

Kia ora koutou As many of you may already know, Cholmondeley is 70% community-funded. This level of local support allows us to remain more flexible, accessible, and responsive to the needs of the community we are a part of. It also means we need to raise over \$1million each year to cover our operational costs.

If you need convincing (or just a laugh), check out the fun video our team put together of the top five reasons you should grab yourself a membership and support Cholmondeley:

it.ly/EB-Top-Five

And, if you haven't already, please join us on Facebook for regular updates on events at the Centre and other ways you can support the work we do: www.facebook.com/Cholmondeley.NZ

Entertainment Books available now.



We know there are many community causes worthy of your support; thank you to everyone who purchases a Book this year, and to our many donors, volunteers, and sponsors already doing amazing things for Cholmondeley and the children we care for.

If you'd like to know more about the different ways you too can support Cholmondeley, visit our website www.cholmondeley.org.nz/donate or contact fundraising@cholmondeley.org.nz , 03 329 9832 — we'd love to hear from you.

Thanks from The Cholmondeley Team

Order your 2016/17 Entertainment Book Membership through Cholmondeley. We will receive a generous \$13 from every book sold, and you'll gain

access to over \$20,000 worth of savings.
 Order online: www.entbook.co.nz/137450p
 Or contact Emily Smith: 03 329 9832 | fundraising@cholmondeley.org.nz

Woolfun Day's

Saturday July 9th Anytime between 10 am and 4 pm
 397 Marine Drive
 August 13 at Rowena's (Bergli Farm, Teddington)
 September 10 at 397 Marine Drive

Come and sit by the fire and enjoy a relaxing day working with wool with like-minded people in a small group. Coffee and tea provided. Bring your lunch and your «crafty» project. July sessions at 397 Marine Drive, in Charteris Bay, next to the Charteris Bay Yacht Club. 40 minutes from the square. August session is at Bergli, then September back at 397 Marine Drive.

Naval Point Club

Re-scheduling of The Annual General Meeting of Naval Point Club Lyttelton Incorporated

The Naval Point Club Lyttelton Annual General Meeting was to be held on Wednesday 22 June at 7.30pm in the Wardroom at Naval Point Club Lyttelton. However, due to an administrative error on my part, the meeting must now be rescheduled to Wednesday 10 August at 7.30pm in the Naval Point Wardroom, Lyttelton.

I unreservedly apologise for this error and for any inconvenience that the re-scheduling of the Naval Point Club Lyttelton Annual General Meeting may cause any current board member, member or board nominee.

Any queries regarding the nomination process prior to the rescheduled AGM please could you contact Matt at manager@navalpoint.co.nz or in the club office on 03 3287029.

Project Lyttelton AGM

July 14th.
 Pot luck at 6pm followed by AGM at 7. All welcome
 54a Oxford St Lyttelton.

Advertising in the Review

Since the inception of the Lyttelton Review we have been very generous with advertising. Any one off advertisements for businesses have generally been published free. Advertisers are encouraged to make a donation to our volunteer organisation.

To be a permanently listed business in the directory and have articles written about your business we have a yearly membership fee of \$165 including GST. If you

would like to have a yearly listing please contact us infocentre@lyttelton.net.nz and we will forward our membership application.

Zumba Class

Zumba Gold Fitness is fun, low impact, easy to follow exercise for active older adults and beginners which lets you move to the beat at your own pace.

Every Friday 11.30 -12.30pm Cost \$5
 Lyttelton Recreation Centre
 25 Winchester St, Lyttelton
 For more information contact either:
 Mele Paoese 021 216 5039
 Ellen Graham 329 4361

Come along and join us next Friday for a fun filled hour of exercise followed by a complimentary cup of Coffee/Tea afterwards.



Adventures in Stewart Island

Stewart Island is to be found in the wish-list of many cruisers. Everyone's experience is different, and for those who have yet to make the trip each account helps to keep the dream alive.

On June 23rd Bob and Robin Jones will be discussing their 2015 sail from Akaroa to Stewart Island.

As a point of difference, Bob concentrated on photographing anchorages and related charts to assist those potentially planning a cruise south. And as those who know Bob and Robin would expect, weather patterns and passage strategy will also be mentioned. Little Ship Club of Canterbury meets at Naval Point Club. 7 for 7.30pm start.

Lyttelton Harbour Festival of Lights

Light - Creativity - Celebration

18 - 26 June 2016

Well by now you will have the programme for the upcoming event on your fridge or you may have booked or enquired further about one of the many fantastic events we have to look forward to. If you haven't you still have time! This year the festival is all about light, creativity and celebration. The dreaming and planning has nearly been completed by the team behind this year's festival and it's now up to the Lyttelton Harbour community to get in behind it and get involved. There is plenty for everyone. It all kicks off this Saturday 18 June with the LAF Grand Opening Cabaret, Community House's Matariki Celebration and Puppets at the Port at St Saviours.

Some events require booking so be sure you don't miss out by booking early. There are events for young and old. For the younger ones.

The Bright Light Workshop with Science Alive is a chance for busy caregivers to prepare their children for the Street Party and parade without the worry or mess of last minute craft making at home. Create, learn and discover while building your own electronic circuit and lantern. Thursday 23 June 5.10 - 6pm, 6.10 - 7pm at the Lyttelton Recreation Centre \$5. Bookings are essential! community@sciencealive.co.nz.

Puppets at the Port at St Saviours's Church at Holy Trinity is a rare treat and opportunity to see some of Christchurch's best professional puppeteers perform. Lyttelton locals Juliet Neil of Thumbs Up Puppetry and Rowena MacGill of Sunset Silhouettes will be joined by Liz Weir, EIEIO, and Natural Magic for a day of puppets. Saturday 18 June. All shows \$5 or \$20 per family. Bookings are essential!

Arco Circus Workshop with the Twisty Twinz

They're back! If you ever wanted to hone your acrobatic skills now is your chance.

Saturday 25 June Lyttelton Arts Factory Adults 10 - 12, \$15 children 2-3pm \$10. Bookings essential at theloonstheatretrust.com

Lyttel Library is offering two fun events on Thursday 23 June. Light it Up at the Lyttel Library 3.15-5.15pm is a chance to make an LED and fabric brooch to wear in the street parade (ages 10-13) Small charge. Limited places. Stories after Dark is becoming a regular much

loved event in the festival. Storytelling, songs and rhymes followed by crafts and hot chocolate, who can Resist!

For the older among us there are events at the **LyttelPungaPictureClub**, Oxford Street.

Talking Heads Thursday 23 June, 5pm or **Classic Movie Night** Boyz in the Hood, Wednesday 22 June or not to be missed **Pizza for the People** 4pm Sunday 19 June.

If you fancy an evening of ritz and glamour **The Masquerade Ball** at the Lyttelton Club on Saturday 25 June is not to be missed with live band Gin Shot and prizes for best mask.

Also get your teams together for **Quiz Night on The Deck at Freemans** Wednesday 22 June 7pm. **The Basement Poetic III** is an evening of spoken word featuring Lyttelton voices, vibes and visuals. Please note this event now has a new venue 30 - 32 Voelas Road at Lionel's House on the Hill.

Diamond Harbour will not be outdone with their **Mid Winter Candle Lit Feast** Sunday 19 June 7pm. Live music, long tables, fairy lights and decadent food sounds very tempting. Adults \$39, under 14's \$18.

Remember to light up a tree and/or your letterbox during the week of the festival. Then take a photo, share it on facebook, remembering to tag the Lyttelton Harbour Festival of Lights or instagram (#lovelylyttelton). Great fun for the kids. They can then text their street address to 021 023 18196 to receive a yummy spot prize.

Pick up a programme, if you haven't already at all Christchurch City Libraries or go online at lyttelton.net.nz, keep up to date on facebook: Lyttelton Harbour Festival of Lights and share with friends and family.

Article Project Lyttelton





**PROJECT LYTTELTON**
the soul of a sustainable community

LYTTELTON HARBOUR



JUNE
18-27

FESTIVAL OF LIGHTS



LIGHT, CREATIVITY, CELEBRATION



!STREET PARTY!
24TH
6PM

!ALL WELCOME!
GET A PROGRAMME FOR ACTIVITIES & EVENTS
★ ★ ★ ★ ★ ★ ★ ★ ★ ★ ★ ★ ★ ★ ★ ★





**lpc** Lyttelton Port of Christchurch**Rātā** Foundation**THE LION** FOUNDATION

★ ★ ★ **LYTTELTON.NET.NZ** ★ ★ ★

Street Party Friday 24th June

6.00pm ★★ ★ PARADE ★★ ★

Futuristic is our theme. Dress up for our annual Festival of Lights Parade. Young and old are encouraged to join in and wear a costume incorporating light. Parade will meet at St Saviour's at Holy Trinity, 5.30pm and finish at Albion Square.

London Street Stage MC Claran Fox

5.30pm DJ J.B. Revivalist

6.20pm Candice Milner

6.55pm Lindon Puffin

7.30pm Lyttelton Port of Christchurch
Fireworks Display

7.45pm Mundi

8.55pm Los Farsantes

9.50pm Kitchen Collective

Albion Square Stage MC Li'l Chuck

6.30pm Parade arrives at Albion Square

6.35pm Lyttelton Primary School

Lyttel Strings

The LAF Dance Crews

Plus More

7.45pm Buskers Programme

Li'l Chuck

Sport Suzie

Twisty Twinz

Shay Horay

Around Lyttelton

4pm till Late Lyttel Punga Pirate Party

Spice rum-bass and great vibe in the place, \$10 door.

9pm Festival of Darkness, Civil & Naval, Free

LIGHT CREATIVITY CELEBRATION

Throughout the week of the festival there are exciting light art installations from local artists on display around Lyttelton.

This is a new commission by Project Lyttelton for this year's festival. Check out lyttelton.net.nz for details.

Street Party Transport

Our beautiful port town does not offer many parking options. There will be no parking in Lyttelton after 7pm. Please consider one of the alternative transport options:

Park & Ride

Park at one of the following locations and take the bus provided for a gold coin donation. Buses will run to and from these locations between 5.30pm and 10.00pm.

★ Gondola car park in Heathcote, running every 15 mins.

★ Naval Point Yacht Club Lyttelton

★ Corner Colombo & Moorhouse, 5.30, 6.30, 7.30pm

City Bus

Extra bus services will run on the 28 and 535 lines to and from Lyttelton.

Globelets

Only Globelets are being used at the street party for ALL drinks and soup. Globelets are New Zealand-made and are recyclable, reusable, BPA-free. You buy your globelet for \$2 when you buy your first drink, then the Globelet is yours to use for the night (you can even rinse it at our rinse station!). At the end of the night you can take it home or return it for a refund.

LYTTELTON HARBOUR FESTIVAL OF LIGHTS



JUNE 18-27

★ ★ ★ lyttelton.net.nz ★ ★ ★

Champion of the South lpc 455 Road to the Stars

Music & Performing Arts

Saturday 18th June

LAF Grand Opening Cabaret 7.30pm

A night of unforgettable entertainment with new and old faces, hosted by MC Jared Corbin, Lyttelton Arts Factory, \$45. Book at: www.theloonstheatretrust.com

Alliance Francaise Christchurch Music Festival

Hosting: Sans Tribe, The Brooms, Le Choix, Alice McLean, Hawaiian Malden, Dani Cichon, 7pm, The Wunderbar, Tickets \$12, door sales or at www.afchristchurch.org.nz

Sunday 19th June

The Basement Poetic Ill 7pm (doors open 6pm)

Spoken word, sonic enigma, visual intrigue, live & kicking at The Basement (ex-El Santos) under the British Hotel. Featuring Lyttelton voices, vibes and visuals. Art and sound on the edge and a fire in the hearth.

Wednesday 22nd June

Alice In Candyland 9pm, Civil & Naval

Your host Miss Candy Applebottom tells the tale of Alice with comedy, music, burlesque and a notorious finale. With Ben Brown, Emily Fairlight, Anna Propriate, Asian Tang, Mikki Pidot, Subminimal Jim. Dress-up encouraged

Thursday 23rd June

A Night with the Unicorn 7pm

Spontaneous stories created right before your very eyes using inspiration from the audience. Tales never to be repeated! \$10 door sales, at Lyttelton Arts Factory.

Devilish Mary & the Holy Rollers 9pm, Civil & Naval

Saturday 25th June

Acro Circus Workshop with the Twisty Twinz

Learn techniques in acro-balance with the highly-skilled acrobatic performers at LAF. Adults 10am-12, \$15 Children 2-3pm, \$10. Book at: theloonstheatretrust.com

Masquerade Ball 8pm, Lyttelton Club

Live band Gin Shot, prizes for best mask, no cover charge. Ladies wearing a mask get first sparkling wine free.

At Park Band at Rough Diamond 8pm

A night of music at Diamond Harbour. Tickets at the door.

Sunday 26th June

Dancing in the Dark 7pm - 8pm, Union Chapel

A Project Lyttelton event supported by NLNL. Dance like no one is watching! \$5 door sales, 38 Winchester St.

Community Events

Saturday 18th June

Matariki Celebration 10am - 1pm, Albion Square

Lyttelton Community House will be celebrating the Maori New Year through the sharing of dance & music.

Puppets at the Port - St Saviour's Church at Holy Trinity

Local professional puppeteers present:

10am - Liz Weir Farmyard Fun (under 5's)

11am - Thumbs Up (Juliet Neil) Peter Rabbit (ages 3-8)

12pm - Elieio - The Magic Acorn (ages 3-8)

1pm - Sunset Silhouettes (Rowena MacGill)

The Old Lady Who Swallowed a Fly (family)

2pm - Natural Magic - The Coconut Whangersnozzle

Pirate Show (ages 5-10)

All Shows \$5 or \$20 per family. Bookings; email

nellyj@snap.net.nz

Sunday 19th June

Pizza for the People 4pm, LyttelPungaPictureClub

Share a pizza, movie and music, \$5 per pizza, BYO toppings, bar, 17 Oxford St. Movie is by public choice; www.lyttelpungapictureclub.org

Mid Winter Candle Lit Feast 7pm, Preserved

Preserved, Diamond Harbour, is hosting two decadent courses, live music, long tables, fairy lights and the night finishing with the release of sky lanterns. Adults \$39, under 14's \$18. Enquiries; www.preserved.co.nz

Tuesday 21st June

The Science of Light 3.30pm - 4.30pm, Lyttel Library

We are so lucky to have Science Alive weekly and free. For kids aged 5-10.

LIFT Library Film Evening 7pm, The Portal

Celebrating Lyttelton's initiative. Koha or Timebank Credits. \$4a Oxford St.

Wednesday 22nd June

Conversation Dinner 6.30pm, The Portal

The Lyttelton Harbour Timebank invites its members to a potluck dinner with a conversation menu. 54a Oxford St.

Quiz Night on The Deck at Freemans 7pm

Fundraiser for Lyttelton Community House Trust \$60 per team of 4. Happy hour all night, great prizes. Book at Freemans 328 7517

Classic Movie Night 8pm, LyttelPungaPictureClub

Boyz in the Hood. Eats & drinks, 17 Oxford St. www.lyttelpungapictureclub.org

Thursday 23rd June

Light It Up at the Lyttel Library 3.15pm to 5.15pm

Come along and make an LED and fabric brooch to wear in the street parade (ages 10 - 13). Small charge, limited places, book at the Library.

Bright Light Workshop with Science Alive

Create, learn & discover whilst building your own electronic circuit and lantern. 5.10 - 6pm, 6.10 - 7pm Lyttelton Rec. Centre (Gym) \$5 Bookings essential; community@sciencealive.co.nz

Talking Heads 5pm, LyttelPungaPictureClub

Local poets / spoken word and the film featuring the live epic Talking Heads concert Stop Making Sense (1984) Eats & drinks, 17 Oxford St. lyttelpungapictureclub.org

Stories After Dark 6.30pm - 7.30pm, Lyttel Library

Join us for storytelling, songs and rhymes followed by crafts and hot chocolate.

Saturday 25th June

Inaugural Monster Hunt & Spooky Disco

Dress-up and hunt for ghouls & monsters at 5.30pm, 5.50pm, or 6.10pm, (ages 7 & over). Bring a torch. Spooky Disco 6 - 7.30pm, gold coin, meet at Lyttelton Arts Factory.

Sunday 26th June

Out of the Attic - Mid Winter Market 11am-3pm

Arts, crafts and 2nd-hand market, Diamond Harbour Memorial Hall, EFTPOS available. To book a stall or donate items contact sarahpritchett72@gmail.com

Nightmares

by
Jane Seatter

The clap of thunder woke her. Lightning blazed revealing her half unpacked suitcase on the other bed. The crashing waves hit the beach with such force she could hear debris landing with resounding thuds.

Was it such a good idea after all? Escaping to Okarito for some time alone had seemed the only answer to her misery. At this moment, misery had been replaced by terror. The cottage was only a few strides from the beach and it sounded as if the breakers would be crashing on the verandah any minute. She got out of bed and looked through the window at the empty section next door. Not that it was empty now. Soon after she had arrived, a young woman had unloaded three beautiful chestnut mares from a massive horse float; tossed some hay about and left them, presumably to perform as lawn mowers.

There they stood, backs to the howling wind and driving rain. Why didn't the owner come back and rescue them? There was nothing she could do, so she climbed back into bed and pulled the duvet over her head.

But sleep was not an option - or so she thought.

The horses needed care and she was the one to administer it. She found the oilskin hanging in the usual place by the back door; pushed her bare feet into gumboots and went outside. They could be housed in the garage. Lightning struck again and again frightening the poor creatures (not to mention herself) beyond endurance. She grabbed a fistful of mane from the smallest of the three and, with the other two following, led them round the front of the house to the open garage door. Luckily they followed her in with what seemed to be trust and gratitude.

Back inside she could hear crashes and bangs that were not related to the storm. It sounded like gardening tools and boxes or maybe even more precious items were being obliterated. Her worry for the horses turned to worry about the damage for which she no doubt would be liable.

The sun was shining when she awoke. The gentle wavelets rippled and hissed as they caressed the stony shore. A tui called from the nearby gum tree. Through the window she could see the horses placidly eating the wet hay.

- Diamond Harbour Writers Group



*Support.
Strength.
Success.*

News from the LHBA Networking Meetings

Showcasing our Local Business's

June 3rd 2016

Kiwi artist Julia Holden moved back to New Zealand and into Christchurch four years ago after a very successful career in Australia, including several national arts awards and exhibitions including one on Australia's largest public screen. Among her local projects she has been a Lecturer in Painting at Canterbury University; created Egg #45, "A Shell of her former self" in the great Christchurch Egg hunt; and recently opened her exhibition "I'm your fan" with a performance painting to show how the living sculpture photographs are created. Her latest proposed project combines her early kiwi career in film & television and her current 'animated painting' works.

Julia gave a fascinating talk, taking us through her project "Lyttelton Redux, Refiguring the past" in which she intends to take modern Lyttelton Harbour personalities and transform them into historical Lyttelton harbour figures. The final portion of each work would be completed in around 30 minutes, using clothing props, paint and clay as required to transform the local personality volunteers into historical figures and photograph them. The completed works will then be displayed in Harbour businesses as a geocached arts trail complete with online audio pieces describing the modern & historical personalities. Proceeds from sales of the artworks would go to support the Lyttelton Museum and the displaying businesses*.

June 10th 2016

The Lyttelton Port Company (LPC) has a few major projects in the works at the moment and we were pleased to have Engineering Services Manager, Neil McLennan, talk to us about one of them - dredging the harbour.

Boats keep getting bigger in the quest for efficiency and cost savings; that means the Port needs to dredge the harbour to allow these much larger cargo ships, with much deeper drafts, to enter & exit the harbour and dock at all tide levels, keeping the LPC a strong and economic port and allowing our exporters to get their goods to market much faster than is currently possible.

Neil covered the great care they have taken to assure a minimal amount of impact on the environment & everyone who works and lives in the harbour & surrounds from the dredging project.

LHBA Networking Meetings

Every Friday from 9.30am at the Recreation Centre 25 Winchester St.

Who can attend?

Anyone resident in the Lyttelton Harbour/Whakaraupō Basin who owns, runs, or works for a business or

Anyone involved in a business based primarily in the Lyttelton Harbour/Whakaraupō Basin.

Attendance is free for LHBA members. Non-members can attend free for 1 month and will then be asked to join the LHBA.

How can I attend?

Book yourself a spot at <https://lhba-networking.eventbrite.co.nz>, spaces are limited so please do book.

RSVP at the previous meeting

Email dana@bluefusion.co.nz

Txt 021 027 05450


PRESERVED

*is proud to present
a family afternoon with...*



**2pm
WORKSHOP**
\$25 Includes
show
ticket

The Nukes

SUNDAY 3 JULY \$25

3-5pm show

Kids under 12 free with
a paying adult

2pm WORKSHOP for all ages. Limited bookings available (instrument required)

@ Preserved Eatery

21 Waipapa Avenue, Diamond Harbour ph 329 4854

For BOOKINGS

www.preserved.co.nz/product/1394954

www.facebook.com/preserved.co.nz

or www.eventfinda.co.nz



LYTTELTON RUGBY CLUB.



Under 10's 4th June

Under 10's Pirates Vs HSOB 15 / 50 to HSOB

We are looking for a few more players for this team as we have just split them into two teams The Sharks & the Pirates.



LYTTELTON RUGBY CLUB.



Under 16's 4th June

PLAYER OF THE DAY: Anaru Dry

COACHES CHOICE: Curtly Shrimpton

Under 16's game on Saturday 4th June against Christchurch boys high school blue 60/05 to Christchurch boys high



LYTTELTON RUGBY CLUB.

LYTTELTON RUGBY CLUB FUNDRAISER FUN NIGHT OUT HORSE RACING



Date: Friday, 17 June 2016

Time: Doors open 5.00pm

First race: Approx 5.30pm

3 Course Meal Served: 7.00pm – 8.30pm

Where: Christian Cullen Lounge, Level 1.
Metropolitan Stand, Addington Raceway

Cost: \$45 per person includes race entry, meal,
race book and raffle

.....
**To secure your ticket (limited number) please see Linda
Preddy (ph 0273859312) or Ray Steele (ph 0274352654).**

**If you are interested please add your name to the list
below.**

Payment needs to be made no later than 31 May 2016.

*Celebrate Matariki with
One Voice Te Reo Kotahi*



Join us!

7.30pm Thursday 7th July
WEA Centre, 59 Gloucester St
Please bring a plate of kai to share

★ *Celebrate the stories of the Third Sector*

★ *Make plans for the new year*

★ *Share kai*

★ *connect*



ROOM FOR RENT: FLATMATE WANTED

01 LYTTTELTON

Two double rooms available in recently refurbished Lyttelton house. \$170/140+ expenses. Central location, two minutes stroll to London Street and all its amenities. Large garden and deck overlooking port, good sized kitchen and living areas, 2 heat pumps and ample off street parking. To share with easygoing 30's guy. Ph or txt 0220348425.

AVAILABLE FOR RENT

01 LOOKING FOR ACCOMMODATION from May to August? A fully furnished house with two generous double bedrooms is available. it's private, quiet, spacious and cosy, and a short walk from London street cafes, shops and market. Please contact Deb +64 27 427 8382 or Debnation@gmail.com

02

3 bedroom (2 double 1 single), insulated (ceiling, walls and underfloor) off street parking, woodburner with wet back, basement storage, new carpet, curtains and paint. Decking and good views. Ph or text Roy 0274 44395

03 LYTTTELTON: Furnished Studio/Flat: For long or short term. Self-contained studio/flat for rent from 27.4.2016.

Separate and private. Has its own kitchen and bathroom.

FULLY FURNISHED. Double bed, sofa, kitchenware, whiteware, fridge, dvd player.

It is warm, sunny and light with a view of the port and a sunny spot to sit outside in a nice garden. Short walk to the Lyttelton shopping area and bus. Off street parking. Suit a clean and tidy person. No pets. No smokers.

Long term it would suit one person - \$290 per week for one person (plus expenses). Short term it could suit one or a couple - \$60 per night for one person. \$80 per night for a couple (includes expenses). Phone Michelle (owner) 0274160625 or 3288020.

EQC ACCOMMODATION

01 LYTTTELTON

We have rental accommodation available in the Lyttelton area for Earthquake Repairs. Short or Long term, fully furnished, pets negotiable. Please phone Daniel on: 03 377 4939 or 021 994 297.

02 LYTTTELTON.

Lovely 3 bedroom character home, heat pump, log burner, drive on access, stunning views, pets OK \$600 per week. Negotiable. Phone 021 060 2316.

03 CASS BAY

Ideal stay during you EQC Repairs. Governors Bay Road, Cass Bay. \$200 a night. Four bedroom house with great views. Contact Claire 027 878 7867.

04 LYTTTELTON

"Wake up every morning with a view of the harbour, while enjoying peace and quiet away from the city. 43a Exeter Street is a beautiful, warm, historic cottage freshly painted & newly renovated. This 2 bedroom private cottage is ideal for the family to relax in while your home is being repaired by EQC or on holiday in Christchurch. Only a 15 minute drive away from the CBD this cottage is fully furnished with all the comforts of home, landline, sky TV and wifi. \$120 a night (pets negotiable). Contact Emma 027 498 7927

05 DIAMOND HARBOUR

Out The Window Diamond Harbour

Experience the tranquility of Diamond Harbour through our large open "kitchen window" and our Captain's Room in our 2 bedroom 1930's restored cottage. It boasts 2 double bedrooms (sleeps 5 max) (1 room queen, other room king and/or single bunk or two singles. Good indoor outdoor living to patio garden and views by day/night. Off street parking 2 cars, cook-top log burner, fully furnished, is insulated, and has a sunny position. It is also 'in-zone' for Cashmere High School.

Good public transport to the city centre and beyond. Photos and online payment available. \$295 per week excluding electricity. Ph 027 305 0409 or 027 877 4961

WANTED

Wanted: house to buy Lyttelton/Corsair Bay. No 'as is where is' thanks.. Serious cash buyer. Call 027 4561292

Events

TUESDAY JUNE 14TH

Lyttelton Club

Housie

8pm

Wunder Bar

Open Mic and Showcase

WEDNESDAY JUNE 15TH

Fat Tony's

Happy Hour

5-7pm

Wunder Bar

Parabola West Southern Tour

8pm

THURSDAY JUNE 16TH

Civil and Naval

Devlish Mary and the Holy Rollers

9pm

Fat Tony's

Happy Hour

5-7pm

FRIDAY JUNE 17TH

Fat Tony's

Happy Hour

5-7pm

SATURDAY JUNE 18TH

Albion Square

Matariki Celebration

10-1pm

Fat Tony's

Happy Hour

5-7pm

Lyttelton Arts Factory

Grand Opening Cabaret \$45

A night of unforgettable entertainment with old and new faces. Hosted by MC Jared Corbin

7.30pm

SUNDAY JUNE 19TH

Fat Tony's

Happy Hour

5-7pm

Freemans

Carmel Courtney and Friends

3.30pm

TUESDAY JUNE 20TH

Lyttelton Club

Housie

8pm

Lift Film Night

The Portal

7pm

Wunder Bar

Open Mic and Showcase

WEDNESDAY JUNE 21ST

Civil and Naval

Alice in Candyland

9pm

Fat Tony's

Happy Hour

5-7pm

Wunder Bar

Al Park and Mark Hattaway

THURSDAY JUNE 22ND

Civil and Naval

Devlish Mary and the Holy Rollers

9pm

Fat Tony's

Happy Hour

5-7pm

FRIDAY JUNE 23RD

Festival of Lights Street Party 5.30 till late

SATURDAY JUNE 24TH

Fat Tony's

Happy Hour

5-7pm

Wunder Bar

Last Chance Dogs Virginia Purple Divamol and the Romantic Nihilists

SUNDAY JUNE 25TH

Fat Tony's

Happy Hour

5-7pm

Freemans

Carmel Courtney and Friends

3.30-6.30pm

Galleries:

Lytel Gallery: – Ellie Waters Ko te whanga ko au; Ko au ko te whanga - The harbour and I; I and the harbour. Until June 30th

50 Works Gallery: Katharina Jaeger – Tracking May 20 June 19

Purposely considered lines navigate the surface – the points where they intersect create tension, volume and movement – in a series of large-scale drawings by Katharina Jaeger.

Everyday objects, a pair of pants, a ribcage, hands and drapery are re-worked into a 'language of observation'. Jaeger's precise drawings shift the ordinary or mundane into the realm of the ethereal where their presence and movement is fleeting and worthy of recording. London Street, Lyttelton

Oxford St Art:- Simulacrum' - A contemporary exhibition of portrait and the human figure
May 6 - June 26 2016

Community Activities in and around the Harbour this Week

MONDAY

Community Choir

7.30pm Union Chapel, Winchester Street, Lyttelton.
All welcome. Jillie 021 152 8068

Diamond Harbour Yoga

6.30pm - 8pm
General Class
Diamond Harbour Rugby Rooms

Lyttelton Youth Centre

3-7pm Drop in 10-20years
4-6.30pm Carving Course
7-9pm Boys Group 10-13
7 Dublin St Lyttelton 328 7427

TUESDAY

Community House

Shared Lunch 12.00pm 7 Dublin Street
Make new friends

Diamond Harbour Yoga

6am - 7am
Early Bird Class
Diamond Harbour Stage Rooms

Lyttelton Health Qigong for Seniors

9.30am - 10.30am
Union Church, Winchester Street \$5
Geraldine Parkes 03 328 7284 or 027 644 4455

Lyttelton Library Storytimes

11.00-11.30am

Lyttelton Yoga

9.30am - 10.45am
6.30pm - 8pm
Scouts Den Lyttelton
Contact Rebecca Boot 021 071 0336

Diamond Harbour Bridge Club

1.20pm for 1.30pm start
Diamond Harbour Football Club Rooms. \$4 table
For more information call 329 4868 or 329 4149

Lyttelton Library Science Alive

3.30-4.30pm

Lyttelton St John Youth Division

6.00pm St John Ambulance Station
52 London St, Lyttelton

Lyttelton Youth Centre

2-8pm Drop In 10-20 years
7-9pm Girls Group 10-13 years
7 Dublin St Lyttelton 328 7427

St Josephs Worker Catholic Church

9am Mass 21 Exeter Street, Lyttelton
All Welcome More information call 384 1600

WEDNESDAY

Diamond Harbour Bridge Club

Bowling Club Rooms
6.40pm for a 6.50 start
Partner finder - Carolyn Craw. Ph 3294 279
All welcome

Diamond Harbour Singers

7.30 - 9.00pm
Every Wednesday in Stage Room of Community Hall.
All welcome. Contact Margie 329 3331

Diamond Harbour Yoga

6am - 7am
Early Bird Class
Diamond Harbour Stage Rooms

Lyttelton Cubs

6.30pm Contact Mark Brabyn 027 281 6180

Lyttelton Garage Sale

10.30am 54a Oxford Street, Lyttelton
Second Hand Bargains and more.

Lyttelton Harbour Fruit and Vegetable Collective

Is trading again each Wednesday between 12.30pm
and 2.30pm at the Union Church in Winchester Street.
Contact Jill Larking for more info 027 237 4960

Lyttelton Library Wednesdays Knit and Yarn

10.00-12.00pm

Lyttelton Play Group

Lyttelton Playgroup
At Kidsfirst Lyttelton
12.30pm- 2.30pm
33 Winchester St Lyttelton
Call 03 328 8689 for more information

Lyttelton Youth Centre

3-6pm Underage Drop In 7-9 years
6-8pm Drop in
7 Dublin St Lyttelton 328 7427

THURSDAY

Community House Flat Walking Group.

10am
Contact Hannah Sylvester. Ph: 741 1427

Diamond Harbour Yoga

6am - 7am Early Bird Class
Diamond Harbour Stage Rooms

Governors Bay Volunteer Fire Brigade

7.00pm Governors Bay Fire Station
Weekly Training, New Members Welcome

Lyttelton Garage Sale

10.30am 54a Oxford Street, Lyttelton
Second Hand Bargains and more.

Lyttelton Volunteer Fire Brigade

7.00pm Lyttelton Fire Station
Weekly Training, New Members Welcome

Community Activities in and around the Harbour this Month

Lyttelton Youth Centre

2-7pm Drop In
7-9 Girls Group 10-13 years
7 Dublin St Lyttelton 328 7427

FRIDAY

Diamond Harbour Yoga

6am - 7am Gentle Class
Diamond Harbour Rugby Rooms

Lyttelton Harbour Business Association

Networking Meeting 9.30-10.30
Lyttelton Recreation Centre
25 Winchester St
More Info call 021 027 05450

Lyttelton Garage Sale

10.30am 54a Oxford Street,
Lyttelton Second Hand Bargains and more.

Lyttelton Library Fridays Babytimes

10.30-11.00am

Lyttelton Yoga

9.30am - 10.45am
Scouts Den Lyttelton
Contact Rebecca Boot 021 071 0336

Lyttelton Youth Centre

2-7pm Drop In
7-9 Girls Group 10-13 years
7 Dublin St Lyttelton 328 7427

SATURDAY

Lyttelton Farmers Market

10.00am London Street,
Lyttelton Fresh produce, Live Music, Buskers and More

Lyttelton Garage Sale

10.00am 54a Oxford Street, Lyttelton
Second Hand Bargains and more.

Lyttelton Harbour Bazaar Market

10.00am No 6 London St. Artists, Bric a Brac and More

SUNDAY

St Saviour's at Holy Trinity

17 Winchester Street
10.00am Service with Holy Communion

2nd Sunday of every month only
Port Hills Uniting Church Service
10am Sunday Worship.
All Welcome

GROUPS

Diamond Harbour Civil Defence

7.00pm Third Wednesday of the month.
Community Church Diamond Harbour
Contact: Wendy Coles 0211541434

Governors Bay Civil Defence

7.00pm Third Wednesday of the month.
Governors Bay Fire Station Contact
Contact: Ian Palmer 3299 160

Lyttelton Civil Defence

7.00pm Third Wednesday of the month.
Lyttelton Information Centre
Contact: Brenda Hurl 021 359 059

Lyttelton Lions

7.30pm Second Tuesday Each Month
Lyttelton Community House
Contact: Mary 03 328 8523

Lyttelton Museum Historical Society

Contact Liza Rossie 021 211 0832

Lyttelton Netball Club

Contact Flo McGregor flomac@xtra.co.nz

Lyttelton Mt Herbert Community Board

9.30am Third Wednesday Each Month
Meetings Open to the Public

Lyttelton Reserves Management Committee

Weed group meets last Sunday of the Month 1-3pm
Meet at the Foster Terrace entrance to Urumau Reserve.
Planting Group meets the second Sunday of the month. All Welcome. More Information email lytteltonreserves@hotmail.co.nz

Lyttelton Rugby Club

For details visit the club Facebook Page or contact the club's Rugby Manager
Nathan.mauger@gmail.com 021 111 6069

Lyttelton Time Bank

10-4pm Tuesday to Friday. 20 Oxford St Lyttelton
328 9093 www.lyttelton.net.nz/timebank

Lyttelton Toy Library

Located at the Lyttelton Rec Centre Squash Court
25 Winchester St. Open each fortnight on Saturday morning 10-12 noon. For more information see Facebook Lyttelton Toy Library or email lytteltontoylibrary@gmail.com or call Helen 021 075 4826

Naval Point Old Salts Lunch

The Old Salts Lunch is being held on the 2nd Tuesday of every 2nd month with the next one being held next Tuesday, 10th February starting @ 12:00 with 2 course lunch commencing @ 12:45.
Contact Barry Bowater 329 4828 or 0272743520

St Joseph the Worker R.C.Church

5.30pm Mass 3rd Sunday of the month. Parish House
21 Exeter Street Lyttelton.
For more information call 384 1600

PLACES TO STAY

B@B Settlers Retreat 153 Governors Bay Road	021 186 5220 021 144 2979	thackergj@slingshot.co.nz Hosts: John and Gaynor Thacker
Cass Bay Retreat Governors Bay Road, Cass Bay	027 878 7867	cassbayretreat.co.nz
Governors Bay Bed and Breakfast Governors Bay Road, Governors Bay	03 329 9727	gbbedandbreakfast.co.nz Host: Eva
Governors Bay Hotel 52 Main Road, Governors Bay	03 329 9433 021 611 820	governorsbayhotel.co.nz Host: Jeremy and Clare
Harbour Lodge 1 Selwyn Road, Lyttelton	027 242 7886	info@harbourlodge.co.nz www.harbourlodge.co.nz
Il Sogno Bed & Breakfast 58 Koromiko Crescent Church Bay		ilsogno@snap.net.nz Host: Graeme and Angela
Little River Camping Ground 287 Okuti Valley, Little River	03 325 1014 021 611 820	littlerivercampground.co.nz Host: Marcus
Orton Bradley Park Camper Van Stay Marine Drive, Charteris Bay	03 329 4730	ortonbradley.co.nz Host: Ian
Out Of The Window Bach Diamond Harbour	03 328 7677 027 8774691	Min 2 nights
The Rookery 9 Ross Terrace, Lyttelton	03 328 8038	therookery.co.nz Host: Rene and Angus

EAT, DRINK, DINE

London Street Dairy 34 London Street, Lyttelton	03 328 9350	Open 7 Days 7.30am to 10pm Meet: Andrew and Glenn
Roots Restaurant 8 London Street, Lyttelton	03 328 7658	rootsrestaurant.co.nz Meet: Giulio and Christy

thelyttelldirectory

2015 | 2016 your call to support local businesses around the harbour

THINGS TO DO

Black Cat Cruises Quail Island Adventure B-Jetty, Lyttelton Wharf [Below Oxford Street]	03 328 9078 0800 436 574	blackcat.co.nz
Christchurch Gondola 10 Bridle path Road, Heathcote valley	03 384 0310	welcomeaboard.co.nz
International Antarctic Centre 38 Orchard Road, Christchurch Airport	0508 736 4846	iceberg.co.nz
Jack Tar Sailing Dampier Bay Marina, Lyttelton	03 389 9259 027 435 5239	jacktarsailing.co.nz Skipper: Mike Rossouw
Orton Bradley Park Marine Drive, Charteris Bay	03 329 4730	ortonbradley.co.nz

LOCAL EXPORTS

Lyttelsoft Specialising in Accounting Software	03 328 8671	lyttelsoft.co.nz Meet: Penny Mercer
Real Homes New Zealand Limited PO Box 94, Lyttelton	03 390 3393 021 224 6637	realhomes.co.nz Real Estate Agent: Lynnette Baird
Masonry Works Architectural Stonemason and Brickwork	021 0816 6983	masonryworks.nz@gmail.com www.masonryworks.net
Saunders & Co 1063 Ferry Road, Ferrymead	03 940 2435 022 133 6963	saunders.co.nz
All Clear Chimney Cleaning Chimney's gutters, fires and difficult maintenance jobs.	03 329 4772 0224 4010203	allclearchimneycleaning.co.nz brunoallclear@gmail.com
Furnishscene Specialising in curtains, blinds, shutters, interior design and color consultancy. Meet Laura, Karen and Bridget	03 977 4630	furnishscene.co.nz

HEALTH, BEAUTY, FITNESS

Christchurch Yoga Scout Den, Charlotte Quay, Lyttelton	021 071 0336	Christchurchyoga.co.nz Instructor: Rebecca Boot
Honey Comb 34 London Street, Lyttelton	03 328 8859	honeycombhair@extra.co.nz or see our facebook page



Rebuilding earthquake damaged roads,
water, wastewater and storm water pipes.

30 May 2016

Work notice: Godley Quay, Lyttelton, water main replacement

What	Replace the earthquake damaged water main
Where	Godley Quay, between Cyrus Williams Quay and Voelas Road
When	From Monday 7 June for around three months

Where:



Sourced from LINZ data, Crown Copyright reserved

What we're doing:

The earthquake damaged water main on Godley Quay needs to be replaced. This is an extensive job that will take around three months to complete.

The work will be done in sections to limit the amount of people we are affecting at one time. We will be beginning at the northern end of Godley Quay and moving south towards Cyrus Williams Quay. When working directly in front of properties vehicle access to driveways will be unavailable during working hours. Where possible we will make access available to driveways at night.

Traffic lights will be used to maintain two-way traffic at all times.

Key:

 Watermain replacement

What to expect:



Please turn over



Email: info@scirt.co.nz
www.strongerchristchurch.govt.nz
Follow us on Twitter @SCIRT_info



Programme funded by



New Zealand Government

Example of traffic impact:

Traffic lights will be in place maintaining traffic in both directions. Please be on the look out as our worksite progresses further down the street. Pedestrian access will be available past the worksite and to properties at all times. Parking will not be available directly next to our worksite.

Key:

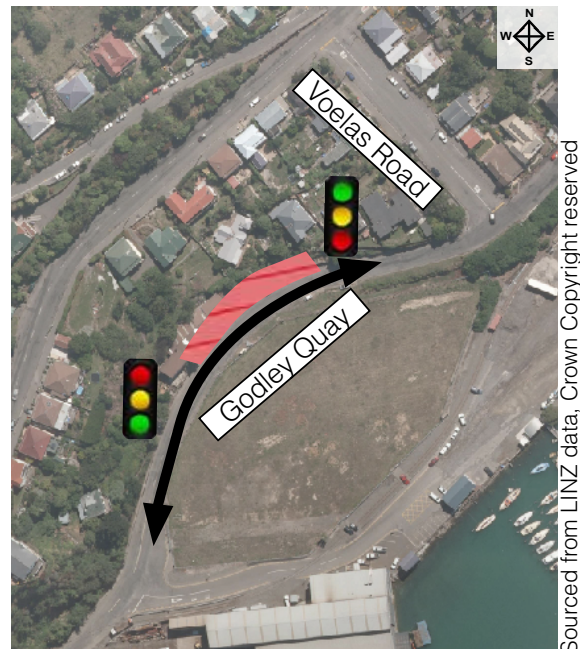
Work site



Traffic flow



Traffic lights



Sourced from LINZ data, Crown Copyright reserved

General Information:

Please contact Fulton Hogan on 0800 277 3434 if you have any specific access requirements that we need to consider e.g. nurse/doctor visits, Meals on Wheels, or planned works on your property.



Our standard work hours are Monday to Friday between the hours of 7.00am to 6.00pm.



There will be increased noise, dust and vibration levels.



Works will have no planned impact on current power, telecommunication, water or gas services. However, the network is still fragile so please be prepared in case there is an unexpected service cut off.



All works are subject to favourable weather and on-site construction conditions.



Safety is our number one priority. Safety is your responsibility too. Stay clear and stay alert - keep children and pets at a safe distance from the work site.

If you are not the owner of this property please pass this leaflet onto your landlord or property manager.

Need more information?

Call Fulton Hogan on: 0800 277 34 34 (8.30am- 5.00pm Monday - Friday)



Email Fulton Hogan at: rebuildinfo@fultonhogan.com



Visit the SCIRT website: www.strongerchristchurch.govt.nz



Email: info@scirt.co.nz
www.strongerchristchurch.govt.nz
 Follow us on Twitter @SCIRT_info



Fulton Hogan

Christchurch
City Council



Programme funded by

New Zealand Government

Sign Up
to receive email updates by
emailing "Reserve Terrace" to
eqinfo@downer.co.nz



3 June 2016

Work Notice - Reserve Terrace, Lyttelton. Retaining Wall repair.

What	Rebuilding the earthquake damaged retaining walls– Stage 1 repairs.
Where	Starting from the Northern boundary of 29B Reserve Terrace.
When	Starting from Tuesday 7 June, 2016. Work will continue South for about 7 months.
Traffic	Road closure between number 31 and number 13 Reserve Terrace.






What we are doing

- Downer, as part of SCIRT, is repairing earthquake damaged publically owned retaining walls on Reserve Terrace in Lyttelton from number 13 to 31 Reserve Terrace and part of the retaining wall steps at 14 Reserve Terrace.
- You may have received an overview notice on 10 May 2016. If you did not, or would like another copy please copy the Downer Team.
- Work on the retaining wall will be done in stages. We will repair 12-16 metre sections of the retaining wall at a time, working from the location indicated in Map 1 progressing South.

Stage 1 repairs

- **Stage 1 of the repairs will begin on Tuesday 7 June 2016. The first stage will take about 1 month, subject to favourable on-site and weather conditions.**
- Stage 1 repairs will begin at the property border between numbers 31 and 29B Reserve Terrace and extend along the roadside boundary of 29B.
- Structural assessments of properties will be conducted before we start any excavation work and begin to remove the existing retaining wall. These will be conducted by Maynard Marks Property and Building Consultants. You will be notified prior to these property assessments commencing.

Key	
Closed section of road	
Retaining walls to be repaired	
Road Closed Sign	

If you are not the owner of the property please pass this notice on to your landlord or property manager.



Email: info@scirt.co.nz
www.strongerchristchurch.govt.nz
 Follow us on Twitter @SCIRT_info

Downer
Relationships creating success

Christchurch City Council

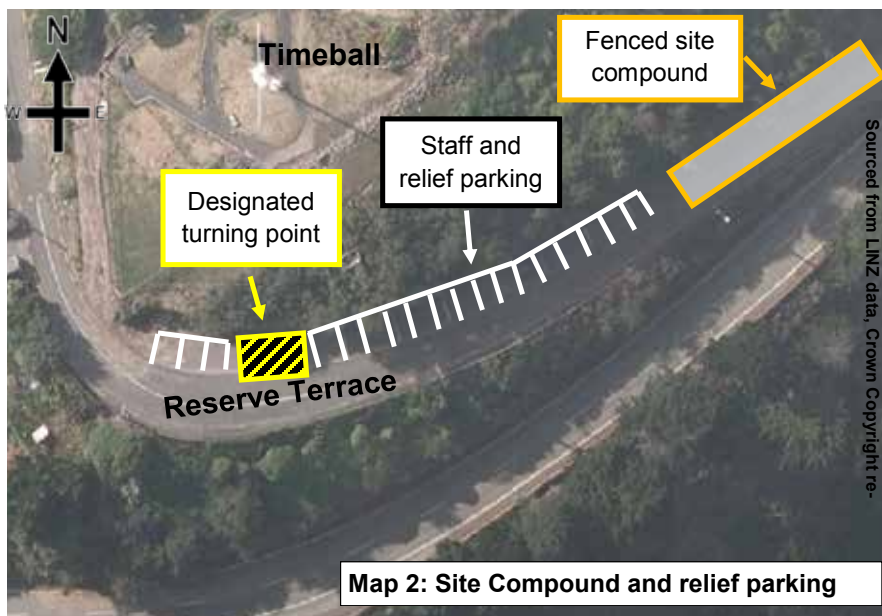
Programme funded by



New Zealand Government

Traffic impacts

- The road closure will begin at number 31 Reserve Terrace. This section of the road will remain closed to through traffic between number 31 and 13 for the remainder of the repairs.
- Vehicle access to properties will be maintained to residents within the closure, outside work hours. This is as long as vehicles can be parked off the street in private garages or in vehicle decks.
- We will do our best to maintain vehicle access during work hours.
- If you do not have off-street parking we aim to provide relief parking near our site compound on Reserve Terrace. See Map 2 for location of relief parking.
- **No-parking cones will be in place. Please do not park next to these cones or work may be delayed.**



We understand the impacts of this work will be significant. Please contact the Downer team if you have any questions or concerns. We look forward to working with you while completing these essential repairs.

Need more information?

Call Downer on: 0800 400 310 between 8.30am and 5.00pm
Monday to Friday



Email Downer at: eqinfo@downer.co.nz



Visit the SCIRT website: www.strongerchristchurch.govt.nz

General Information:

Your rubbish and recycling will not change. Please put your bins in the normal spot by 5pm the night before collection and our crew will move them and return them if needed. Please make sure your house number is visible on the bins so our crews return the bins to the correct property.



Please contact Downer on 0800 400 310 if you have any specific access requirements that we need to consider.



Our standard work hours are Monday to Friday between the hours of 7.00am and 6.00pm. On rare occasions we may need to work outside these hours.



There will be increased noise, dust and vibration levels associated with this work.



Safety is our number one priority. Safety is your responsibility too. Stay clear and stay alert - keep children and pets at a safe distance from the worksite.

If you have any construction work programmed for your property in 2016 please contact the Downer team-Phone: 0800 400 310 or Email: eqinfo@downer.co.nz



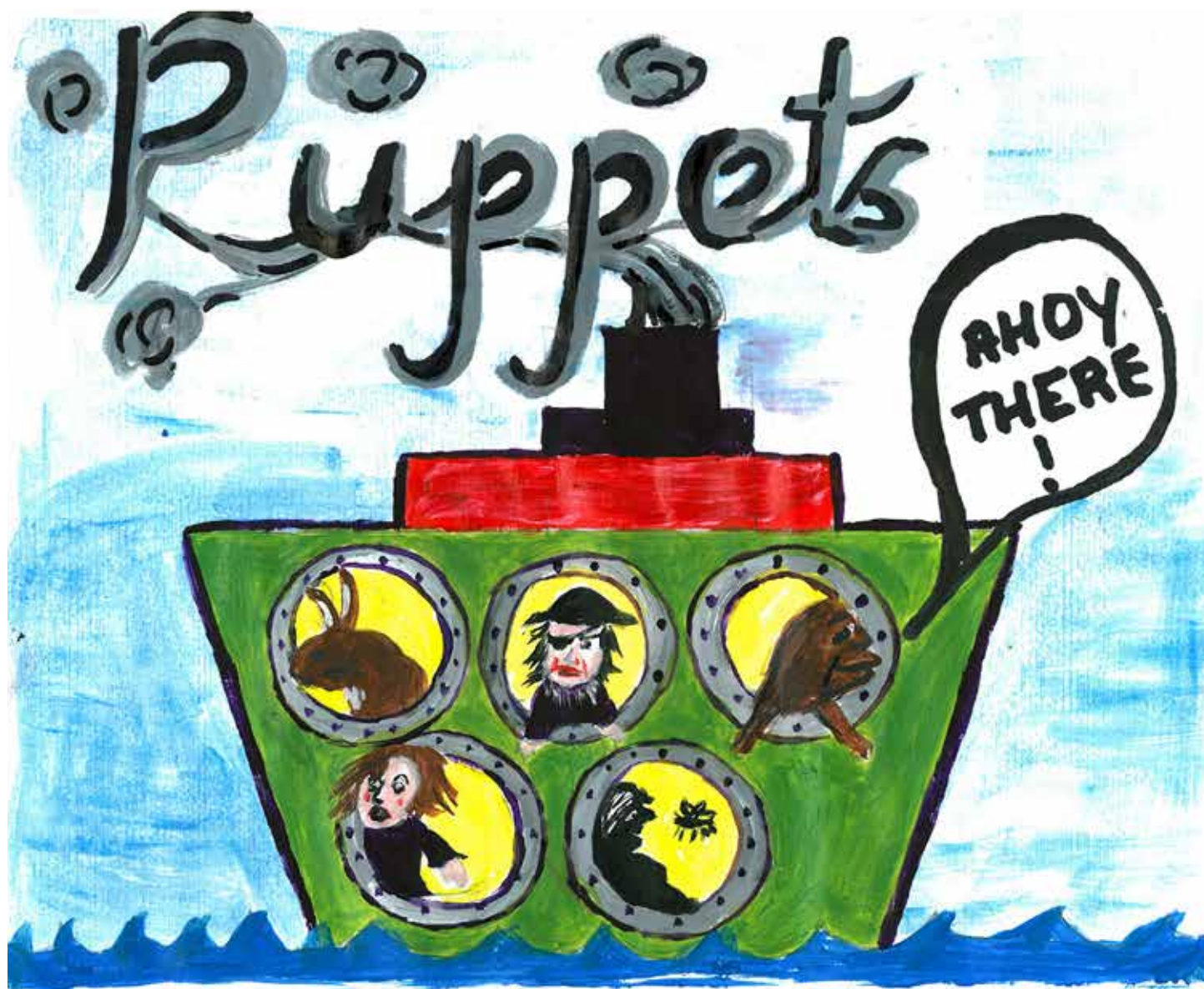
Email: info@scirt.co.nz
www.strongerchristchurch.govt.nz
Follow us on Twitter @SCIRT_info



Programme funded by



New Zealand Government



At: St Saviour's Holy
Trinity Church
Winchester St,
Lyttelton

AT THE PORT

In association with
The Lyttelton
Festival of Lights
2016

A DAY OF FIVE FABULOUS PUPPET SHOWS

For all the family

Saturday, June 18th 2016

10 am - FARMYARD FUN from Liz Weir, for ages 2-6

11 am - PETER RABBIT - from Thumbs Up Puppetry (Juliet Neill, Lyttelton) for ages 3-8

12.00pm - THE MAGIC ACORN from EIEIO (Miyuki Takahagi and Oscar Lerma) for ages 3-8

1.00 pm - THE OLD LADY WHO SWALLOWED A FLY from Sunset Silhouettes (Rowena MacGill, Teddington) for families.

2.00 pm THE COCONUT WHANGERSNOZZLE PIRATE SHOW - from Natural Magic (Mary and Kerry McCammon) for ages 5-10

Cost - \$5 per person
Or \$20 for family of 5

Children to be accompanied by
adult caregiver

BOOK NOW BY PHONING 021 032 7014, OR EMAIL neillj@snap.net.nz