

Next issue date: 15th March

# LYTTELTON REVIEW

March 2016 • Issue: 161

PURAU • DIAMOND HARBOUR • CHURCH BAY • CHARTERIS BAY • GOVERNORS BAY • RAPAKI • CASS BAY • CORSAIR BAY • LYTTELTON



## IN THIS EDITION:

- Lyttel Library is open for business
- Recreation Centre Re-Opens
- St Saviours

Next Issue date: 15th March 2016.  
Content Deadline: 12th March 2016.

---

## Review Creators

Lyttelton Harbour Review is a 100% voluntary community newsletter initiative developed after the February 2011 earthquake. It's a Lyttelton Harbour Information Centre initiative produced by Chairperson Wendy Everingham and Committee Member Jenny-Lee Love.

The objective of the Lyttelton Harbour Review is to help keep local residents informed with what is going on in the wider Lyttelton Harbour community. Of course the success of the Lyttelton Harbour Review could not be possible without the ongoing support and enthusiasm from the wider community.

A big thank you goes out to everyone who sends information; is willing to be interviewed or lets us know what might be happening in the neighbourhood. The Lyttelton Harbour Review project would not be possible without you all.

If you have an event, topic, sport announcement, fundraiser or cause that you would like to share with the harbour community, then Wendy or Jenny-Lee would love to hear from you:

Wendy Everingham  
Office: 328 9093  
Mobile: 021 047 6144  
Email: [infocentre@lyttelton.net.nz](mailto:infocentre@lyttelton.net.nz)  
Content Deadline: 5pm Friday

Jenny-Lee Love  
Email: [lytteltonreview328@gmail.com](mailto:lytteltonreview328@gmail.com)

Subscribe to the Review:  
Email either Wendy or Jenny-Lee with the words "Subscribe Me" in the subject line and the Lyttelton Harbour Review will be delivered to your inbox.

In 2016 the Lyttelton Harbour Review is produced fortnightly. Any important information between times will be emailed as a Lyttel Broadcast if necessary.

Hard Copies of the Review are available at:  
Fat Tony's  
Lyttelton Community House  
Lyttelton Harbour Information Centre  
Lyttelton Library  
Lyttelton Top Club

Back Copies Available to Download:  
[www.lytteltonharbour.info](http://www.lytteltonharbour.info)

## New Features

To you our reader, we welcome a new opportunity to have your say and invite "letters to the editor". All topics big or small, no more than 250 words, no images. We will include any article but reserve the right to publish. Of course no offensive material will be accepted. Your chance to have a say about what ever you want.

Please send all copy to  
[lytteltonreview328@gmail.com](mailto:lytteltonreview328@gmail.com)

We look forward to expressing your views and/or ideas to the community.

We would also like to start a classifieds page for anything people are wanting to sell, buy, offer for free, exchange, odd jobs, births, weddings and deaths.

## The Lyttel Library is open for business!

After all the debate and discussion last year, the Lyttelton Library has moved to its temporary location in the Trinity Hall in the Lyttelton Recreation Centre. While we have not been able to fit in quite all of the collection, we do have full library services and preschool programmes. One of the issues we had to take into account when planning the temporary layout was the very considerable weight of books to be supported by the hall's wooden floor. This has resulted in that slightly smaller collection, and the necessity to install book and magazine shelving in the Rec Centre hallway and lobby. So we're asking people to enjoy browsing those collections, but please remember to go back into the hall to have any items issued that you wish to take home. Because that's the other small change – we have no self-issue machine at present, so take any books, magazines, DVDs or CDs to your friendly librarian for issuing before leaving.

The Lyttel Library has been the outcome of a lot of thought and effort by a huge number of people. The Lyttelton Temporary Library Working Party consisted of local residents and library supporters Penny Carnaby, Bridget O'Brien, Jaimee Pham, Justyn Strother, Gary McCormick and Luke Parker. These people were ably supported by our wonderful Lyttelton-Mt Herbert Community Board, and very supportive council officers from different council units.

The actual move was made possible by the efforts of a lot more people. In the end we used 22 volunteers from the community to move the library. Some people worked several shifts while others came in for just a few hours. A large number were Timebank members, ably co-ordinated by Wendy Everingham, but we had people who just walked into the library and offered to help. We ended up with a pretty spectacular contribution from

Gilmour Terrace residents – I think we discovered about a quarter of the volunteers lived there.

Tasks undertaken included taking books off the shelves, and then putting them on at the other end, moving shelving, loading and unloading furniture and boxes with the contents of the staff backrooms, cleaning shelves and furniture, and sorting books into order when they finally made it on to the shelves.

Trevor from Norwich Quay kindly lent us a trailer one morning to move some of the larger items of furniture. And one young lad, Ridley, counted out the 150 book ends we needed in Trinity Hall while his younger sister Mollie sorted the library stamps!

We're very grateful for the offers of help – not all could be taken up when we had to reschedule some days' activities, but we couldn't have made the move in such a short time without the community. And muffins from Nuk Korako, a blue velvet cake from the Geddes/Jones household, and lemon tart from Ruth Dyson kept us all going.

But of course there were all those other people who also helped the move by maxing out their library cards in the weeks before the library closed for the move – it made quite a difference to the physical amount that had to be shifted.

Since opening a lot of our visitors have come in, and then started reminiscing about other times in the hall – a school dance, a concert, yoga, queuing to get a resident's pass for the tunnel five years ago...

So welcome to the Lyttel Library – we'd love to get a visit from you, because it wouldn't have existed without you, and what we've got is so much better than a truck!

Article Lyttelton Library







Photo courtesy of the Christchurch City Council

## Recreation Centre Re-Opens

### Another Positive Step Forward

The repaired and strengthened Lyttelton Recreation Centre opened to great fanfare on Saturday 20 February 2016.

The opening was marked with a fun community event. MCed by Joe Bennett the opening took on the guise of a of basketball game with a good splattering of entertainment from local children.

For many of us the last time we were in this building it was back in 2011 when the centre was used as the Civil Defence and earthquake recovery centre hub. Joe Bennet recalled coming in for his tunnel permit! Joe declared he had missed the space as he was a keen squash player prior to the earthquakes so showed his pleasure at being able to play squash again.

Our Mayor Lianne Dalziel and Councillor Andrew Turner officially reopened the Recreation Centre. "Twenty Eight years ago I lived in Ripon Street" said Lianne. She recalled how she loved the sense of community then and how as you drove through the tunnel you left all your cares behind. "Today those feelings have been rekindled for me again" she said.

A ball being slam dunked through the basketball hoop signalled the official opening of the refurbished Recreation Centre. As in the true spirit of a basketball match the local crowd led by Lyttelton Primary School blew whistles, hooters etc and the half time oranges were the celebratory fare.

Afterward visitors were able to participate in plenty of activities including basketball, karate, football, squash, pirate-hat-making and storytelling sessions, and enjoyed their chance to check out the children's art display.

Our Recreation Centre fulfils so many functions. The sports hall doubles as a large assembly space for events and supports basketball, badminton, volleyball, indoor football, indoor bowls, dance, yoga, pilates, group exercise, and foundation movement skills for children. The Council upgrade has resulted in a repaired and strengthened the building and there have been significant improvements including soundproofing, upgrading the ventilation system, re-roofing the office and squash courts and improving the fit-out.

The temporary Lyttelton Library, based in the adjacent Trinity Hall, opened on Monday 15 February, and will remain until repairs are completed on the permanent Lyttelton Library on London Street, which is expected in December 2016.

Keep an eye on the Review and Council publications for the activities that will now be available in the Recreation Cenytre. For booking and enquiries phone the council 941 8999 or 0800 800 169 or book on line at [ccc.govt.nz](http://ccc.govt.nz)

Article Lyttelton Information Centre



Photo courtesy of the Christchurch City Council





# St Saviours

## The Seafarers Church

The story of what is now St. Saviours' at Holy Trinity is a good one beginning in 1885 when the Seafarers' Chapel was consecrated in West Lyttelton. Thousands of seafarers' worshipped in the chapel, notably including those under the command of Captain Robert Falcon Scott before their Antarctic expeditions early last century. St. Saviours' was in use up until 1976 when the West Lyttelton Parish merged with Holy Trinity Parish in Winchester Street, Lyttelton. At that time, St. Saviours' was deconstructed and gifted to Cathedral Grammar School in Christchurch where it remained until the earthquakes of 2010/11 severely damaged it.

The same earthquakes totally destroyed the historic stone Holy Trinity Church. The Lyttelton Parish was then offered St. Saviours' which although damaged, was able to be deconstructed again and rebuilt on the site of the former Holy Trinity Church. The Church is now known as "St. Saviours' at Holy Trinity" and was opened on June 7th 2015. Regular Sunday services have taken place since then.

A major element of the new church will be the construction of an elegant bell tower which will incorporate the pointed steeple roof and bell of the old Holy Trinity belfry. The design is based on historical belfries in Canterbury.

Unfortunately the cost of construction is not covered by insurance so the Lyttelton Parish is undertaking a fundraising effort to have the bell tower built. A generous gift by the Cleaver family in memory of Captain John Cleaver, formerly a parishioner of both St. Saviours' and Holy Trinity and well known community advocate, has spurred the Parish to initiate the building of the bell tower.

The bell tower, standing nearly 12 meters high (40ft), does not come cheaply and consequently requires serious fundraising. Due to the historic connection to

the port and the fact that St. Saviours' was originally a seafarers chapel, the new bell tower will be named "The Mariners Bell Tower" in memory of Captain Cleaver and other seafarers including the many recreational yachtsmen/women who have helped shape this town of Lyttelton.

The bell will ring regularly for all the usual Sunday services and other Christian events (weddings, funerals, baptisms, etc.) In addition, the bell will toll on the news of anyone from this area lost at sea or the death of any other seafarer/yachtie upon request.

I am hoping that this request will resonate with the yachting/boatie community and anyone wishing to make a contribution will have their names recorded in a book and those making a significant contribution will have their names recorded on a plaque attached to the tower.

For further information or to make a contribution you can speak with;

Club member and Church Warden:  
Dick Brown 328-8570

Club member and Vestryman:  
Mark Penn 328-9104  
penn3mec@optonline.net

Priest in Charge:  
Fr Peter Williams, 389-3666  
powilliams@clear.net.nz

All contributions will go into BNZ account:  
Lyttelton Anglican Parish Belfry Fund  
02-0864-0006450-004.

Receipts will be issued by Dick Brown and contributions are tax deductible.

*Aritcule Naval Point Club Newsletter*



Photo with thanks from Rowena Lang



# Lyttelton Working Mens Club

## Did You Know? .....

### The Building

Our building has been an integral, significant and well-known part of the Lyttelton community for over a century. Built in 1905, the building housed a range of commercial premises through to 1944 including a grocery shop and the Loons garage. In 1944, the building was purchased by three watersiders and around that time the premises were converted to become the Waterside Workers Social Club known locally as 'The Loons'. The present façade dates mainly from that time. The scalloped parapet, however, remains from and evokes earlier Edwardian times; it is also seen on other local building

### The Club

Lyttelton Working Mens Club history is part of New Zealand history. 1951 is a significant year in New Zealand history. Lyttelton and its port, along with others throughout the country, were involved in the largest industrial dispute ever seen in New Zealand which lasted for 151 days. Having endured compulsory overtime and dangerous working conditions, watersiders finally put in an overtime ban seeking better conditions and an end to compulsory overtime.

The Government declared a state of emergency on 21 February 1951. 'Draconian emergency regulations imposed rigid censorship, gave police sweeping powers of search and arrest and made it an offence for citizens to assist strikers – even giving food to their children was outlawed<sup>2</sup>'. The Waterside Workers Social Club became the hub of support for the locked out workers and their families in Lyttelton including the distribution of food illegally donated by people sympathetic to their cause. The Government of the day deregistered the Waterside Workers Union and sought to seize its assets. The Club became a different entity – the Lyttelton Working Mens Club and thus some assets, including the building itself, were saved. Our Club went from strength to strength and helped reunite the community hosting community events – film nights, fairs, indoor sports and games. We served as a meeting place for local groups and, moving with



the times, discos and themed social nights. In 2006, the building was leased to the Cabaret Club, which adopted the Loons name and became the Loons Theatre Company running well supported shows, plays, music nights and fund-raisers. The Working Mens Club kept a presence with Club Sundays and maintained the building.

### Office Bearers:

President: Neville Walker  
Vice President & Secretary: Brenda Dargan  
Treasurer: Thea Mickell

### Type of Organisation

Incorporated Society  
More Facts and Figures to follow in the next Edition.....

Article The Working Mens Club





## The Garage Sale

### Have you Visited Yet?

The Garage Sale has re-opened at its newly renovated site back at the Project Lyttelton Building 54a Oxford Street Lyttelton. Many old customers have returned and all the customer comments have been fabulous:

"There is so much space"

"It's so bright and uncluttered"

"Wow the library is terrific"

"We can see everything"

"Boy you have all worked so hard to make this happen"

"Having moved site twice now each time we shift we can see better ways of doing things" said coordinator Claire Coates. One of the big improvements has been the great children's display area. That was the brainchild of Teresa Cameron another of the coordinators.

Quite a team of people help run the site. We have three coordinators, Teresa Cameron, Claire Coates and Michaela Jackson. Each of them adds a different strength to the site. Michaela is particularly good at identifying and pricing the more special items that you generously donate.

Supporting the coordinators are a team of volunteers. The regular people are Valda Smith, Robin Dunnage, Ruth Targus, Derek Sanders and Mike Hore and then we have all our community group supporters and helpers who work on various Wednesday's and Saturday's.

It's quite a team of people making this community asset hum.

Now that everything is set up and the routines are established things are much easier to operate. If you have a spare hour or two that you could help, the team would love to hear from you. Pop up and visit. All volunteer work at the Garage Sale earns time credits.



54a Oxford St Lyttelton

Open Wednesday to Friday 10-4pm

Saturday 10-1pm.

Article Garage Sale

## Nominations for the Creative Communities New Zealand

Creative Communities Assessment Committee

2015/16 - 2017/18

Nominations are currently being sought for Community Representatives to join the Creative Communities Assessment Committee for the Christchurch Area.

The Creative Communities Fund supports and encourages local communities to create and present diverse opportunities for accessing and participating in arts activities in Christchurch.

This Fund is available to both Community Groups and Individuals and is for all forms of creative and interpretative expression and can be based around a place, a cultural tradition, or commonly held interests or experiences.

We are looking for enthusiastic and creative people to join our assessment committee to help allocate this funding. This opportunity is open to anyone living in the Christchurch area who is involved and has a wide interest in the arts.

Community Representatives on the Creative Communities Assessment Committee should (ideally) have:

- Interest and involvement in local arts community issues/groups
- Some experience in Committee processes
- Knowledge of various communities of interest
- The ability to be articulate and assertive

You can be nominated by a group or you can nominate yourself to serve on this Committee. The term of office is for three years and is on a voluntary basis.

You would be required to attend an annual briefing and must be available to attend the decision meetings Monday 18 April 2016 and Monday 17 October 2016.

The current Creative Communities Assessment Committee will appoint members to reflect the local community character, with representatives coming from the areas of local Iwi, Community Arts Council and arts and cultural background.

Nominations close 5pm on Friday 4 March 2016. For more information and a Nomination Form please contact Ruby Tiavolo on 941 6288 or [ruby.tiavolo@ccc.govt.nz](mailto:ruby.tiavolo@ccc.govt.nz)

The Creative Communities Fund is now closed for applications.

For further information and to apply visit: <http://www.ccc.govt.nz/culture-and-community/community-funding/community-arts/the-creative-communities-christchurch-scheme/>

## Lyttelton Harbour Wastewater scheme drop-in

The existing resource consents for the Governors Bay and Diamond Harbour Waste Water Treatment Plants (WWTP's) require that treated discharges into the harbour to cease by December 2018 and 2021 respectively.

In 2009 the Council approved a joint working party's recommendation to achieve this through the pumping of untreated wastewater from Lyttelton, Governors Bay and Diamond Harbour plants to the Christchurch Wastewater Treatment Plant in Bromley.

The target is to have all planned discharges of wastewater to the Harbour end by 2021.

The Council is proposing buried submarine pipelines to transport untreated wastewater from the Diamond Harbour and Governors Bay WWTP's across to Lyttelton, then be pumped through the road tunnel via a new pump station near the tunnel entrance to the Christchurch Wastewater Treatment Plant. A road option for the Governors Bay to Lyttelton pipeline route has also been investigated but discarded following earlier consultation.

Further information on the proposed scheme can be found at <http://www.ccc.govt.nz/services/wastewater/wastewater-projects/lyttelton-harbour-wastewater-project/>.

The project team are expecting to lodge the consent applications for this project in the coming weeks. A public drop-in session where staff will answer questions is being held on Thursday 3 March 2016, 4.30 pm to 6.30 pm, Top Club - 23 Dublin St, Lyttelton.

## "Blind Boy" Paxton

American musician, Jerron "Blind Boy" Paxton, is making his first visit "downunder" this March and is playing the Naval Point Yacht Club on Friday, March 11.

With roots in Louisiana, Paxton grew up in Los Angeles. A vocalist and multi instrumentalist, Paxton's style ranges from blues to jazz, especially the pre war blues styles made popular by the likes of Bessie Smith and Fats Waller. But he is a man of many influences, old country blues, Cajun, ragtime and while his initial instrument was banjo he has since mastered fiddle, guitar, piano, harmonica and Cajun accordion.

For those who attended the Kelly Joe Phelps sell out show at this venue a couple of years back and wished for more of the same - well this is it! Support is from local musician, Li'l Chuck, the one man skiffle machine who has been receiving rave reviews for his album, "Blues in full swing", both here and overseas. Not to be missed.



BLIND TIGER TOURING PRESENTS

# BLIND BOY PAXTON



TICKETS:  
COSMICTICKETS.CO.NZ  
COSMIC PALMS  
COSMIC RESTART MALL  
UNDERHERADAR.CO.NZ

"Blind Boy Paxton, the world's greatest kosher blues singer!"  
Wall Street Journal

## FRIDAY 11TH MARCH

THE NAVAL POINT CLUB LYTTELTON

WITH SUPPORT APPEARANCES FROM

★ DELANEY DAVIDSON  
AND HIS GHOST ORCHESTRA

&★

LIL CHUCK★  
ONE MAN SKIFFLE MACHINE

## Rates Reduction

When a property is demolished, the rates for that property are reduced to "land-only". For some properties, this reduces the rates to a substantially lower amount.

Unfortunately, this reduction can not be back-dated if there is a delay in us finding out. Because demolitions don't normally require consent, we won't always know when its happened.

But you can help us! The ratepayers often make contact with other units in the course of their rebuild, who may become aware of the demolition.

If in the course of your work you come across a property that has been demolished, we would be very grateful if you could send us the property address to RatesValuation@ccc.govt.nz so that we know to have the rates adjusted.

Thank you in advance for remembering us when you deal with these properties.

Any questions, please do feel free to contact me on extension 6768.

Thank you! Michelle McCormick

## Urumau Weeders

### Join the Team – Meets Monthly

On the last Sunday of each month a group of volunteers meet up for a couple of hours to carry out weed control work in Urumau Reserve. It is interesting and enjoyable work and is not at all strenuous. We are currently searching the outer fringes of the planting areas for re-infestation of target weeds, sycamore, boneseed and old man's beard. We feel that it is important that these weeds do not take hold while the plantings are young and then continue to grow with the maturing native bush. Once the native bush is established and "clean", it is extremely resilient to weeds. This, together with the planting programme, has been the Committee's focus for the past 10 years, interrupted only by the closure of Urumau during the earthquake.

If you have a couple of hours to spare come along and bring your favourite garden gloves and secateurs. Meet up at the Foster Terrace entrance steps at 1 pm. Tools are available at this point.

For your diary - Working dates for the year are:

March 27th, April 24th, May 29th, June 26th, July 31st, August 28th, September 25th, October 30th, November 27th

If it is raining or the bush is very wet, the workday will be postponed to the last Sunday of the following month.

## Harbour Co-Op News

Here we are in the final heat waves of summer, thank goodness for the ocean harbour to dunk ourselves in!!

Yet the leaves are browning the pears falling and for some the throat is calling for an epicly good remedy for now or the coming changes...

so... besides fresh ginger and new manuka honey we also have a product back in from Artemis " Thyme Lemon Tonic", Delicious hot or cold ,sold just beside the counter. A genuine Swiss brew, Certified Organic grown and harvested here in Aotearoa!!

And, as of yesterday we now have Omega Plums and Cox's Orange Apples direct From the sun drenched lands of Motueka.

Thankyou all for your support people of the harbour and those from near and afar.

The Harbour Co-op Team

## Lyttelton Harbour Diabetes Support Group

March 9th Wed. 6.30pm at Community House Lyttelton. Pot Luck dinner then Guest Speaker Bruce Schultz Contact Rowena on 3299118 or maxandrowena@gmail.com

## Did you Notice the Icebreakers in Port?

The Korean vessel Aaron and the Italian vessel Italica have been in Antarctica navigating ice-covered waters, supporting Antarctic science research and providing safe waterways for other ships. Their arrival marks the end of the vessels Antarctic summer season. The Italica will remain in New Zealand, while the Araon will return to Korea.

It is rare that Christchurch gets two icebreaking ships into harbour at the same time, but demonstrates





the growing commitment to Christchurch as a gateway to the Antarctic. Article CCC.



## Prefer a natural approach to Haircare?

Ask us about Inoa Colour. Ammonia free permanent, multi tonal hair colour with no odour. Great for blending away grey, or choose a fun rich fashion shade. Colour after colour hair condition is visibly improved, with optimum scalp comfort.

Look after your colour investment with Pureology. A salon brand like no other, with decadent textures and aromatherapy fragrances. 100% vegan, zero sulphate formulas, with fill UVA/UVB sunscreens. Pureology uses 100% recyclable materials, never tested on animals, and is in partnership with Global Green USA to foster a sustainable future for the salon professional community.

Buy any 2 Pureology products and receive a bamboo and boor bristle brush free. (while stocks last).

Honey Comb Phone: 328 8859

Find us on Facebook and use our new online booking feature.

**Hours 9-5, Late night Thursady -7.30**

Tracy: Tuesday-Saturday

Jolene: Tuesday, Friday, Saturday

Sally: Wednesday Thursday



## Doggy Advice

You, with your tail between your legs  
Could it be you've lost your way?

Pause now and sit with me awhile  
Give me time, I'll make you smile

Whisper all your tales of woe  
Into my ear and they'll be gone

Those folks who shout and make you cry  
I know their bark's worse than their bite

Curl up with me here in the sun  
Then let's go out and have some fun

A big long walk is what you need  
You throw the ball I'll take the lead

No more dwelling on your trials  
From now on just wag your tail

Be like me and dream of rabbits  
When you see a chance then grab it

Tomorrow night when you come home  
Here's hoping that you've found your bone

Life is this you must remember  
Wet licks hugs and howls of laughter

Charlotte McCoy

## Lyttelton Netball Club

Open Day March 12th.

## Community Social Volleyball

Lyttelton Recreation Centre

Two Hours Fun & Exercise \$12.00

Starting March. Tuesday Nights 7.30 till 9.30pm

Please phone Claire to book: 027 223 8636



# ESTUARY

**F**EST  
**E**  
**S**  
**T**

**F**: FUN + GAMES  
in the SUN  
KIDS FUN  
COME  
SEA

**E**: CREAT  
GO FEE  
DELICIOUS  
and FOOD

**S**: SEA WEED  
with  
WINDSURFERS  
SAT BOATS  
Paddle-boards  
CLASS

**T**: LIVE MUSIC  
ENTERTAINMENT



# 5TH MARCH

McCORMACKS BAY RESERVE

McCORMACKS BAY ROAD, ESTUARY



1-5 PM



**'SEAWEEK  
CELEBRATION'**  
LIVE MUSIC, GREAT FOOD

Lots of Fun  
for the Kids:  
FERRIS WHEEL  
**PEDAL MANIA**  
CARNIVAL RIDES  
AND LOADS MORE...

For more info:

[www.mpcc.org.nz/nz/blog/estuary-fest/](http://www.mpcc.org.nz/nz/blog/estuary-fest/)

[www.facebook.com/Estuaryfest](https://www.facebook.com/Estuaryfest) or contact 021 239 8946



Rotary



Summer  
OF  
Fun

Christchurch  
City Council



**Reserve YOUR place NOW!**

# THE HUNGER GAMES

***Transformative 5 week Course for Women***



***Discover Insights Into:***

- **Awareness of your physical and emotional hunger**
- **Your personal relationship with food & mood**
- **Releasing yourself from the bonds of dieting**

**Mondays 7 – 9 p.m**

**At The Breathing Space, Lyttelton**

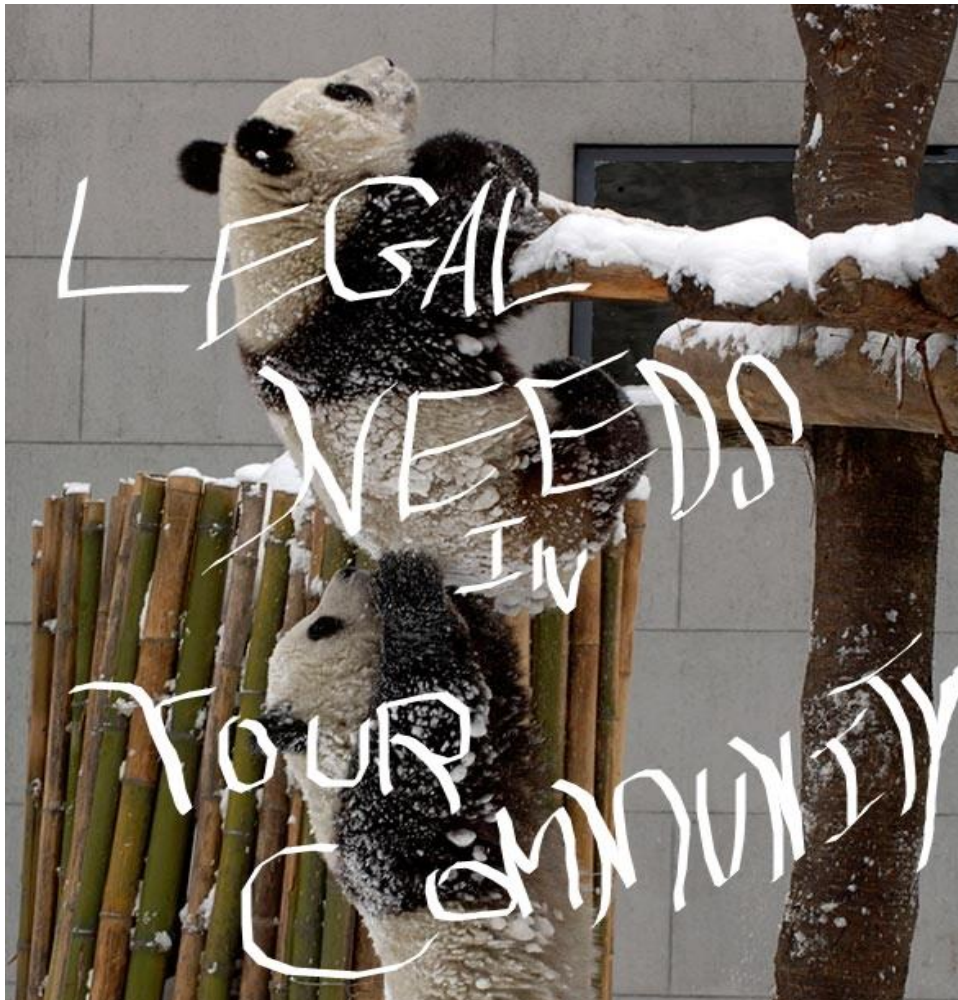
**7th, 14th, 21st March & 4th, 11th April**

**Cost: \$250**

**Limited Spaces – Enquiries call, Frances 021 237 2476 [edify@clear.net.nz](mailto:edify@clear.net.nz)  
or Jan 021 258 2552 [janjeans@me.com](mailto:janjeans@me.com)**

Frances Young (MNZAC) specialised in helping people with eating issues since 1994. Jan Jeans (MNZAC, ANZATA) 25 years of working with people facing life's challenges. Frances and Jan bring together personal and professional expertise to provide safe, supportive, transformative groups for women to connect with others on similar journeys to free themselves from isolation to find hope, inspiration & encouragement





# 7 MARCH LEGAL NETWORKING MEETING

**Invitation to Community Works: 10am -12pm  
Riccarton Community Centre, 199 Clarence St,  
Riccarton, Christchurch. Wheel Chair Accessible**



Community Law Canterbury

*Te Ture Whānui o Waitaha*

Canterbury, Westland & Grey Districts

**10am Morning Tea**

**10:15 am Round  
table  
introductions**

**11 am break out  
groups to  
workshop ideas**

**11:45 am  
feedback from  
groups**

**12 pm Finish**

## **COMMUNITY LAW CANTEBURY**

198 Montreal St,  
Christchurch Central,  
Christchurch 8011  
03-366 6870

[www.canlaw.org.nz](http://www.canlaw.org.nz)



*Rebuilding earthquake damaged roads,  
water, wastewater and storm water pipes.*

**25 February 2016**

## Work notice: Brittan Terrace, Lyttelton, wastewater segment replacements

<b>What</b>	<b>Replace earthquake damaged sections of the wastewater main</b>
<b>Where</b>	<b>Brittan Terrace, between house number 22 and 36</b>
<b>When</b>	<b>From Monday 29 February for around two weeks</b>

### Where:



Sourced from LINZ data, Crown Copyright reserved

### What we're doing:

This work planned for last November had to be rescheduled. The wastewater main on Brittan Terrace was significantly damaged in the earthquakes. On Brittan Terrace there are six segments of the pipe that need to be dug up and replaced.

Due to the large number of segment repairs we expect this work to take around three weeks to complete, with each repair taking around three days to complete.

Two way traffic will be maintained at all times with a combination of traffic lights, stop go systems and priority giveaway systems.

If we are replacing a section of pipe directly in front of your driveway, vehicle access will be restricted. Where possible, we will make access to your property available overnight. We will leave an access restriction notice in your letterbox the day before the work starts to give you time to move your car.

### Key:

● Segment replacement



Email: [info@scirt.co.nz](mailto:info@scirt.co.nz)  
[www.strongerchristchurch.govt.nz](http://www.strongerchristchurch.govt.nz)  
 Follow us on Twitter @SCIRT\_info



Christchurch  
City Council

Programme funded by



New Zealand Government



## What to expect:

SCIRT Update **BRITTAN TERRACE PAGE 2**

## General Information:



Please contact Fulton Hogan on 0800 277 3434 if you have any specific access requirements that we need to consider e.g. nurse/doctor visits, Meals on Wheels, or planned works on your property.



Our standard work hours are Monday to Friday between the hours of 7.00am to 6.00pm.



There will be increased noise, dust and vibration levels.



Works will have no planned impact on current power, telecommunication, water or gas services. However, the network is still fragile so please be prepared in case there is an unexpected service cut off.



All works are subject to favourable weather and on-site construction conditions.



Safety is our number one priority. Safety is your responsibility too. Stay clear and stay alert - keep children and pets at a safe distance from the work site.

If you are not the owner of this property please pass this leaflet onto your landlord or property manager.

## Need more information?



**Call Fulton Hogan on:** 0800 277 34 34 (8.30am- 5.00pm Monday - Friday)



**Email Fulton Hogan at:** [rebuildinfo@fultonhogan.com](mailto:rebuildinfo@fultonhogan.com)



**Visit the SCIRT website:** [www.strongerchristchurch.govt.nz](http://www.strongerchristchurch.govt.nz)



Email: [info@scirt.co.nz](mailto:info@scirt.co.nz)  
[www.strongerchristchurch.govt.nz](http://www.strongerchristchurch.govt.nz)  
 Follow us on Twitter@SCIRT\_info



Programme funded by



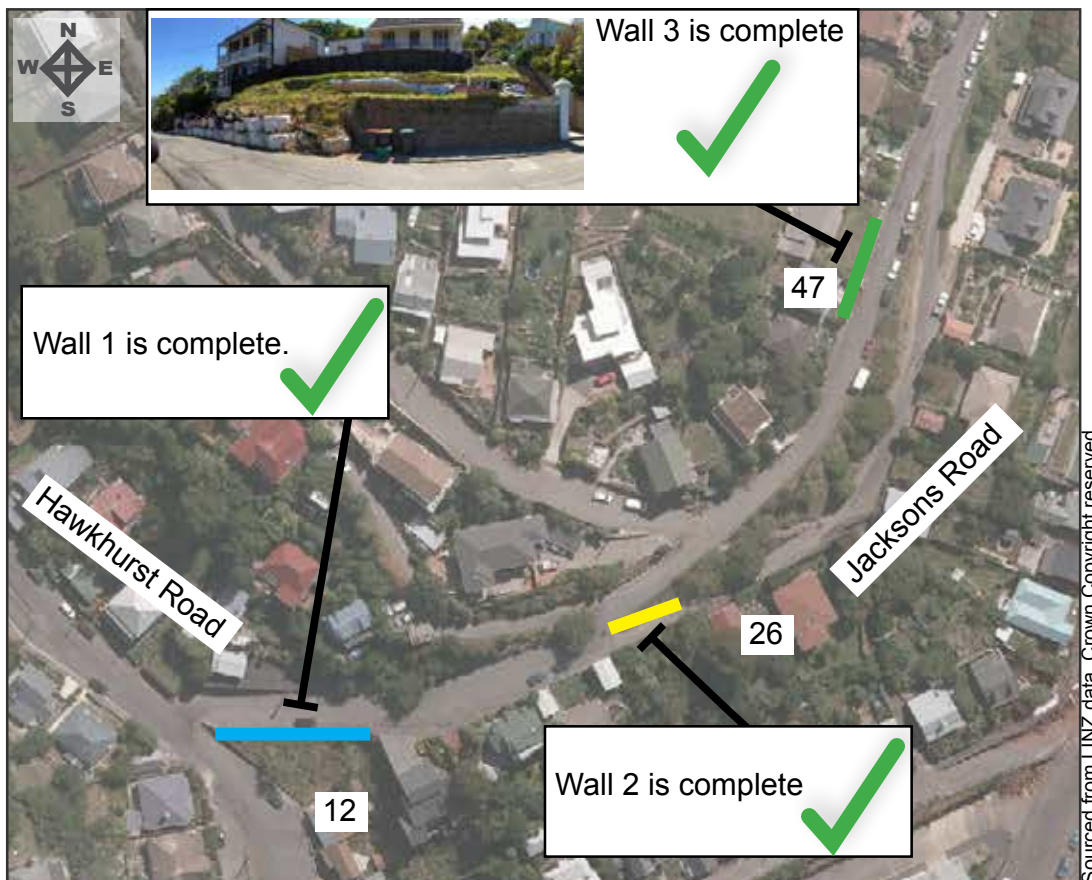
New Zealand Government

25 February 2016

## Work update: Jacksons Road, Lyttelton, road repairs

<b>What</b>	<b>Repairs to the road at the retaining wall sites</b>
<b>Where</b>	<b>Jacksons Road, Lyttelton</b>
<b>When</b>	<b>Monday 29 February for around one month</b>

### Where:



### Key:

- Wall 1 - above 12 Hawkhurst Road
- Wall 2 - adjacent to 26 Jacksons Road
- Wall 3 - in front of 47 and 49 Jacksons Road

### Update:

Construction has been completed at all three retaining walls on Jacksons Road. We now need to repair the road outside each retaining wall. From Monday 29 February the road closure at 47 and 49 Jacksons Road will be reinstated for around three weeks whilst we complete road repairs. Simultaneously, a priority giveaway system will be in place at the Hawkhurst Road and Jacksons Road intersection. Once this work is complete a closure will be reinstated adjacent to 26 Jacksons Road where wall 2 was repaired for around one week. As this is just road repairs we can leave the upper section of this road open to complete these works, unlike when we repaired the retaining wall. Pedestrian access past each site will be available at all times.

Please turn over



Email: [info@scirt.co.nz](mailto:info@scirt.co.nz)  
[www.strongerchristchurch.govt.nz](http://www.strongerchristchurch.govt.nz)  
 Follow us on Twitter @SCIRT\_info



Christchurch  
City Council

Programme funded by



New Zealand Government



**Traffic impact:**

There will be a road closure outside 47 and 49 Jacksons Road from Monday 29 February. The lower lane of Jacksons Road (where the gabian wall was repaired) will be open and traffic can use this lane to access Jacksons Road. Please adhere to the speed limit and take extra care to watch out for pedestrians.

**General Information:**

Please contact Fulton Hogan on 0800 277 3434 if you have any specific access requirements that we need to consider e.g. nurse/doctor visits, Meals on Wheels, or planned works on your property.



Our standard work hours are Monday to Saturday between the hours of 7.00am to 6.00pm.



There will be increased noise, dust and vibration levels.



Works will have no planned impact on current power, telecommunication, water or gas services. However, the network is still fragile so please be prepared in case there is an unexpected service cut off.



All works are subject to favourable weather and on-site construction conditions.



Safety is our number one priority. Safety is your responsibility too. Stay clear and stay alert - keep children and pets at a safe distance from the work site.

**Need more information?**

**Call Fulton Hogan on:** 0800 277 34 34 (8.30am- 5.00pm Monday - Friday)



**Email Fulton Hogan at:** [rebuildinfo@fultonhogan.com](mailto:rebuildinfo@fultonhogan.com)



**Visit the SCIRT website:** [www.strongerchristchurch.govt.nz](http://www.strongerchristchurch.govt.nz)



Email: [info@scirt.co.nz](mailto:info@scirt.co.nz)  
[www.strongerchristchurch.govt.nz](http://www.strongerchristchurch.govt.nz)  
 Follow us on Twitter @SCIRT\_info



Christchurch  
City Council

Programme funded by



**New Zealand Government**

### ROOM FOR RENT: FLATMATE WANTED

#### 01 TEDDINGTON

One single en-suite rooms available at \$200p.w. Power, firewood, water and broadband \$30p.w. Beautiful and warm 2 storey log house with wonderful harbour views on a sunny Teddington farm. Has garden space. Long term preferred. Ph 3299118 See [www.bergli.is-great.net](http://www.bergli.is-great.net)

#### 02 LYTTTELTON

Room with own lounge. Very warm with a great view. Off street park. Share with one owner and must like animals. Suit professional, clean and tidy person. Available at \$180 p.w. includes expenses. Contact 328 775 or 021 251 7839.

---

### AVAILABLE FOR RENT

#### 01 LYTTTELTON: FURNISHED STUDIO/FLAT: FOR RENT LONG OR SHORT TERM..

Self-contained studio/flat for rent. Separate and private.

Has its own kitchen and bathroom.

Fully furnished. Double bed, sofa, kitchenware, whiteware, fridge, dvd player.

It is warm, sunny and light with a view of the port and a sunny spot to sit outside in a nice garden.

Short walk to the Lyttelton shopping area.

Off street parking.

Suit a clean and tidy person. No pets. No smokers.

Short term; \$60 per night for one person. \$80 per night for a couple.

Long term: \$290 per week plus expenses. Available now.

Phone Michelle (owner) 0274160625 or 3288020

#### 02 LYTTTELTON: HOUSE AVAILABLE FOR SIX WEEKS

I'm off to Europe in May and need someone to rent my lovely warm sunny (2 bedroom) home while I'm gone.

Fully furnished with log burner, sheltered garden, deck and outdoor bath.. \$300 wk including internet access. Phone 022 0230627

---

### EQC ACCOMMODATION

#### 01 CORSAIR BAY

Accommodation/house fully furnished. Home looking out over Corsair Bay. Bus stop at the bottom of section. Four double bedroom, two living areas, two toilets and double garage with off street parking. No fences, but pets okay by negotiation. Fully furnished. \$900/wk (power not included). Phone connection. Broadband. Call Heather on 027 211 7205 for details.

#### 02 LYTTTELTON

We have rental accommodation available in the Lyttelton area for Earthquake Repairs. Short or Long term, fully furnished, pets negotiable. Please phone Daniel on: 03 377 4939 or 021 994 297.

#### 03 LYTTTELTON.

Lovely 3 bedroom character home, heat pump, log burner, drive on access, stunning views, pets OK \$600 per week. Negotiable. Phone 021 060 2316.

#### 04 CASS BAY

Ideal stay during you EQC Repairs. Governors Bay Road, Cass Bay. \$200 a night. Four bedroom house with great views. Contact Claire 027 878 7867.

#### 05 LYTTTELTON

"Wake up every morning with a view of the harbour, while enjoying peace and quiet away from the city. 43a Exeter Street is a beautiful, warm, historic cottage freshly painted & newly renovated.

This 2 bedroom private cottage is ideal for the family to relax in while your home is being repaired by EQC or on holiday in Christchurch.

Only a 15 minute drive away from the CBD this cottage is fully furnished with all the comforts of home, landline, sky TV and wifi. \$120 a night (pets negotiable). Contact Emma 027 498 7927

#### 06 DIAMOND HARBOUR

Out The Window Diamond Harbour

Experience the tranquility of Diamond Harbour through our large open "kitchen window" and our Captain's Room in our 2 bedroom 1930's restored cottage. It boasts 2 double bedrooms (sleeps 5 max) (1 room queen, other room king and/or single bunk or two singles. Good indoor outdoor living to patio garden and views by day/night. Off street parking 2 cars, log burner, fully furnished. Good public transport to the city centre and beyond. Photos and online payment available. Fully furnished (\$530 pw excludes power) Ph 027 305 0409 or 027 877 4961

---

### LOOKING FOR RENTAL

We are needing a 3 bedroom (min) house to rent for 12-14 months while our home is being rebuilt in Mt Pleasant. Prefer unfurnished on the east side of Lyttelton. We have one perfectly trained cat. Close garaging if possible. Please phone Linda 021 2398946 or email [lin.fin@xtra.co.nz](mailto:lin.fin@xtra.co.nz)

---

### HOUSE SIT WANTED

Reliable couple are looking for a house sit in Lyttelton whilst visiting grandchildren from the UK. Min. of 2 bedrooms would be preferred. Sat. 19th of March until Sat. 16th of April or any time within this period. Please contact 021 02571039.



## Events

### WEDNESDAY MARCH 2<sup>ND</sup>

**Fat Tony's**  
Happy Hour 5-7pm

**Porthole Bar**  
Night with a Future Star 8pm

**Wunder Bar**  
Al Park and Mark Hattaway

### THURSDAY MARCH 3<sup>RD</sup>

**Civil and Naval**  
Devlish Mary and the Holy Rollers 9pm

**Fat Tony's**  
Happy Hour 5-7pm

**Porthole Bar**  
Fraser

**Wunder Bar**  
The Dance ASTHMATICS ON Tour 9pm

### FRIDAY MARCH 4<sup>TH</sup>

**Civil and Naval**  
Paco DJ

**Fat Tony's**  
Happy Hour 5-7pm  
Karaoke with Thomas Hurunui 8pm

### SATURDAY MARCH 5<sup>TH</sup>

**Fat Tony's**  
Happy Hour 5-7pm

**Wunder Bar**  
AAA Records Rum Run 8pm

### SUNDAY MARCH 6<sup>TH</sup>

**Fat Tony's**  
Happy Hour 5-7pm

**Freemans**  
Carmel Courtney and Friends 3.30pm

**Porthole Bar**  
Jam Session 3.30pm

### TUESDAY MARCH 8<sup>TH</sup>

**Fat Tony's**  
Happy Hour 5-7pm

**Wunder Bar**  
Open Mic and Showcase

### WEDNESDAY MARCH 9<sup>TH</sup>

**Fat Tony's**  
Happy Hour 5-7pm

**Porthole Bar**  
Night with a Future Star 8pm

**Wunder Bar**  
Al Park and Mark Hattaway

### THURSDAY MARCH 10<sup>TH</sup>

**Civil and Naval**  
Devlish Mary and the Holy Rollers 9pm

**Fat Tony's**  
Happy Hour 5-7pm

**Porthole Bar**  
Mikki Pixton

### FRIDAY MARCH 11<sup>TH</sup>

**Civil and Naval**  
Mikey

**Fat Tony's**  
Happy Hour 5-7pm  
Reckless Duo 8pm

**Porthole Bar**  
Tookie Aka DJ & VX plus Jazz

**Naval Point**  
Blind Boy Paxton

### SATURDAY MARCH 12<sup>TH</sup>

**Civil and Naval**  
Heisenburger

**Fat Tony's**  
Happy Hour 5-7pm

**Porthole Bar**  
The Settlers

## COMING UP:

Governors Bay Fete Allandale Domain Allandale  
Sunday March 20th 10.30am  
Entry Gold Coin donation Adults Children free  
Attractions include the Governors Bay Volunteer Fire  
Brigade, Sumner Silver Band, vintage car and classic  
boat display, June Burney(entertainer) plus many fun  
stalls and activities for all ages.  
If you want to exhibit in the Show entry forms  
are available locally. Forms with fees need to  
be sent to Annabelle Bain 027 222 4604 or  
email govbayfete@yahoo

## GALLERIES:

Lytel Gallery • 50 Works Gallery • Oxford St Art

## Community Activities in and around the Harbour this Week

### MONDAY

#### Community Choir

7.30pm Union Chapel, Winchester Street, Lyttelton.  
All welcome. Jillie 021 152 8068

#### Diamond Harbour Yoga

6.30pm - 8pm  
General Class  
Diamond Harbour Rugby Rooms

#### Lyttelton Youth Centre

3-7pm Drop in 10-20years  
4-6.30pm Carving Course  
7-9pm Boys Group 10-13  
7 Dublin St Lyttelton 328 7427

### TUESDAY

#### Community House

Shared Lunch 12.00pm 7 Dublin Street  
Make new friends

#### Diamond Harbour Yoga

6am - 7am  
Early Bird Class  
Diamond Harbour Stage Rooms

#### Lyttelton Health Qigong for Seniors

9.30am - 10.30am  
Union Church, Winchester Street \$5  
Geraldine Parkes 03 328 7284 or 027 644 4455

#### Lyttelton Library Storytimes

11.00-11.30am

#### Lyttelton Yoga

9.30am - 10.45am  
6.30pm - 8pm  
Scouts Den Lyttelton  
Contact Rebecca Boot 021 071 0336

#### Diamond Harbour Bridge Club

1.20pm for 1.30pm start  
Diamond Harbour Football Club Rooms. \$4 table  
For more information call 329 4868 or 329 4149

#### Lyttelton Library Science Alive

3.30-4.30pm

#### Lyttelton St John Youth Division

6.00pm St John Ambulance Station  
52 London St, Lyttelton

#### Lyttelton Youth Centre

2-8pm Drop In 10-20 years  
7-9pm Girls Group 10-13 years  
7 Dublin St Lyttelton 328 7427

#### St Josephs Worker Catholic Church

9am Mass 21 Exeter Street, Lyttelton  
All Welcome More information call 384 1600

### WEDNESDAY

#### Diamond Harbour Singers

7.30 - 9.00pm  
Every Wednesday in Stage Room of Community Hall.  
All welcome. Contact Margie 329 3331

#### Diamond Harbour Yoga

6am - 7am  
Early Bird Class  
Diamond Harbour Stage Rooms

#### Lyttelton Cubs

6.30pm Contact Mark Brabyn 027 281 6180

#### Lyttelton Garage Sale

10.00am 54a Oxford Street, Lyttelton  
Second Hand Bargains and more.

#### Lyttelton Harbour Fruit and Vegetable Collective

Is trading again each Wednesday between 12.30pm  
and 2.30pm at the Union Church in Winchester Street.  
Contact Jill Larking for more info 027 237 4960

#### Lyttelton Library Wednesdays Knit and Yarn

10.00-12.00pm

#### Lyttelton Play Group

Lyttelton Playgroup  
At Kidsfirst Lyttelton  
12.30pm- 2.30pm  
33 Winchester St Lyttelton  
Call 03 328 8689 for more information

#### Lyttelton Youth Centre

3-6pm Underage Drop In 7-9 years  
6-8pm Drop in  
7 Dublin St Lyttelton 328 7427

### THURSDAY

#### Community House Flat Walking Group.

10am  
Contact Hannah Sylvester. Ph: 741 1427

#### Diamond Harbour Yoga

6am - 7am Early Bird Class  
Diamond Harbour Stage Rooms

#### Governors Bay Volunteer Fire Brigade

7.00pm Governors Bay Fire Station  
Weekly Training, New Members Welcome

#### Lyttelton Garage Sale

10.00am 54a Oxford Street, Lyttelton  
Second Hand Bargains and more.

#### Lyttelton Volunteer Fire Brigade

7.00pm Lyttelton Fire Station  
Weekly Training, New Members Welcome

#### Lyttelton Youth Centre

2-7pm Drop In  
7-9 Girls Group 10-13 years  
7 Dublin St Lyttelton 328 7427

## Community Activities in and around the Harbour this Month

### FRIDAY

#### Diamond Harbour Yoga

6am - 7am  
Gentle Class  
Diamond Harbour Rugby Rooms

#### Lyttelton Garage Sale

10.00am 54a Oxford Street,  
Lyttelton Second Hand Bargains and more.

#### Lyttelton Library Fridays Babytimes

10.30-11.00am

#### Lyttelton Yoga

9.30am - 10.45am  
Scouts Den Lyttelton  
Contact Rebecca Boot 021 071 0336

#### Lyttelton Youth Centre

2-7pm Drop In  
7-9 Girls Group 10-13 years  
7 Dublin St Lyttelton 328 7427

### SATURDAY

#### Lyttelton Farmers Market

10.00am London Street,  
Lyttelton Fresh produce, Live Music, Buskers and More

#### Lyttelton Garage Sale

10.00am 54a Oxford Street, Lyttelton  
Second Hand Bargains and more.

#### Lyttelton Harbour Bazaar Market

10.00am No 6 London St. Artists, Bric a Brac and More

### SUNDAY

#### St Saviour's at Holy Trinity

17 Winchester Street  
10.00am Service with Holy Communion

2nd Sunday of every month only  
Port Hills Uniting Church Service  
10am Sunday Worship

All Welcome

### GROUPS

#### Diamond Harbour Civil Defence

7.00pm Third Wednesday of the month.  
Community Church Diamond Harbour  
Contact: Wendy Coles 0211541434

#### Governors Bay Civil Defence

7.00pm Third Wednesday of the month.  
Governors Bay Fire Station Contact  
Contact: Ian Palmer 3299 160

#### Lyttelton Civil Defence

7.00pm Third Wednesday of the month.

Lyttelton Information Centre  
Contact: Brenda Hurl 021 359 059

#### Lyttelton Lions

7.30pm Second Tuesday Each Month  
Lyttelton Community House  
Contact: Mary 03 328 8523

#### Lyttelton Menz Shed

Contact Christine 741 1427

#### Lyttelton Museum Historical Society

Contact Liza Rossie 021 211 0832

#### Lyttelton Netball Club

Contact Flo McGregor flomac@extra.co.nz

#### Lyttelton Mt Herbert Community Board

9.30am Third Wednesday Each Month  
Meetings Open to the Public

#### Lyttelton Reserves Management Committee

Weed group meets last Sunday of the Month 1-3pm  
Meet at the Foster Terrace entrance to Urumau Reserve.  
Next Committee meeting Monday April 11th 7pm  
Top Club. All Welcome. More Information email  
lytteltonreserves@hotmail.co.nz

#### Lyttelton Rugby Club

For details visit the club Facebook Page or contact the  
club's Rugby Manager  
Nathan.mauger@gmail.com 021 111 6069

#### Lyttelton Time Bank

10-4pm Tuesday to Friday  
20 Oxford St Lyttelton  
328 9093 [www.lyttelton.net.nz/timebank](http://www.lyttelton.net.nz/timebank)

#### Lyttelton Toy Library

Located at the Lyttelton Rec Centre Squash Court  
25 Winchester St. Open each fortnight on Saturday  
morning 10-12 noon. 5/3, 19/3, 2/4, 16/4, 30/4 etc. For  
more information see Facebook Lyttelton Toy Library  
or email [lytteltontoylibrary@gmail.com](mailto:lytteltontoylibrary@gmail.com) or call Helen  
021 075 4826

#### Naval Point Old Salts Lunch

The Old Salts Lunch is being held on the 2nd Tuesday  
of every 2nd month with the next one being held next  
Tuesday, 10th February starting @ 12:00 with 2 course  
lunch commencing @ 12:45.  
Contact Barry Bowater 329 4828 or 0272743520

#### St Joseph the Worker R.C.Church

5.30pm Mass 3rd Sunday of the month. Parish House  
21 Exeter Street Lyttelton.  
For more information call 384 1600



## PLACES TO STAY

<b>B@B Settlers Retreat</b> 153 Governors Bay Road	021 186 5220 021 144 2979	thackergj@slingshot.co.nz Hosts: John and Gaynor Thacker
<b>Cass Bay Retreat</b> Governors Bay Road, Cass Bay	027 878 7867	cassbayretreat.co.nz
<b>Diamond Harbour Lodge</b> 51 Koromiko Crescent, Diamond Harbour	03 329 4005 021 103 7080	diamondharbourlodge.co.nz Host: Robyn and Pete
<b>Dockside Apartment</b> 22 Sumner Road, Lyttelton	027 448 8133	dockside.co.nz Host: Grant and Kathy
<b>Governors Bay Bed and Breakfast</b> Governors Bay Road, Governors Bay	03 329 9727	gbbedandbreakfast.co.nz Host: Eva
<b>Governors Bay Hotel</b> 52 Main Road, Governors Bay	03 329 9433 021 611 820	governorsbayhotel.co.nz Host: Jeremy and Clare
<b>Harbour Lodge</b> 1 Selwyn Road, Lyttelton	027 242 7886	info@harbourlodge.co.nz www.harbourlodge.co.nz
<b>Il Sogno Bed &amp; Breakfast</b> 58 Koromiko Crescent Church Bay		ilsogno@snap.net.nz Host: Graeme and Angela
<b>Little River Camping Ground</b> 287 Okuti Valley, Little River	03 325 1014 021 611 820	littlerivercampground.co.nz Host: Marcus
<b>Orton Bradley Park Camper Van Stay</b> Marine Drive, Charteris Bay	03 329 4730	ortonbradley.co.nz Host: Ian
<b>Out Of The Window Bach</b> Diamond Harbour	03 328 7677 027 8774691	Min 2 nights
<b>The Rookery</b> 9 Ross Terrace, Lyttelton	03 328 8038	therookery.co.nz Host: Rene and Angus

## EAT, DRINK, DINE

<b>London Street Dairy</b> 34 London Street, Lyttelton	03 328 9350	Open 7 Days 7.30am to 10pm Meet: Andrew and Glenn
<b>Roots Restaurant</b> 8 London Street, Lyttelton	03 328 7658	rootsrestaurant.co.nz Meet: Giulio and Christy

# thelyttelldirectory

2015 | 2016 your call to support local businesses around the harbour

## THINGS TO DO

### **Black Cat Cruises | Quail Island Adventure**

B-Jetty, Lyttelton Wharf [Below Oxford Street]

03 328 9078  
0800 436 574

blackcat.co.nz

### **Christchurch Gondola**

10 Bridle path Road, Heathcote valley

03 384 0310

welcomeaboard.co.nz

### **International Antarctic Centre**

38 Orchard Road, Christchurch Airport

0508 736 4846

iceberg.co.nz

### **Jack Tar Sailing**

Damper Bay Marina, Lyttelton

03 389 9259  
027 435 5239

jacktarsailing.co.nz  
Skipper: Mike Rossouw

### **Orton Bradley Park**

Marine Drive, Charteris Bay

03 329 4730

ortonbradley.co.nz

## LOCAL EXPORTS

### **Lyttelsoft**

Specialising in Accounting Software

03 328 8671

lyttelsoft.co.nz  
Meet: Penny Mercer

### **Real Homes New Zealand Limited**

PO Box 94, Lyttelton

03 390 3393  
021 224 6637

realhomes.co.nz  
Real Estate Agent: Lynnette Baird

### **Masonry Works**

Architectural Stonemason and Brickwork

021 0816 6983

masonryworks.nz@gmail.com  
www.masonryworks.net

### **Saunders & Co**

1063 Ferry Road, Ferrymead

03 940 2435  
022 133 6963

saunders.co.nz

### **All Clear Chimney Cleaning**

Chimney's gutters, fires and difficult maintenance jobs.

03 329 4772  
0224 4010203

www.allclearchimneycleaning.co.nz  
brunoallclear@gmail.com

## HEALTH, BEAUTY, FITNESS

### **Christchurch Yoga**

Scout Den, Charlotte Quay, Lyttelton

021 071 0336

Christchurchyoga.co.nz  
Instructor: Rebecca Boot

### **Honey Comb**

34 London Street, Lyttelton

03 328 8859

honeycombhair@extra.co.nz  
or see our facebook page



We are pleased to announce the opening of a new art exhibition at Oxford Street Art on 4th March at 5.00pm featuring over 40 great works of art by various local and regional artists.

A special feature will be the work of Mehrdad Tahan, a prize winning artist based in Christchurch. Mehrdad creates intricately detailed landscapes by using charcoal sticks. Each work take him months to complete.

There are also works by other great artists who all have a unique and imaginative approach to the theme of Landscapes. Works include paintings, monoprints, clay and glass sculpture and drawings. We also have some tiny tins with paintings of landscapes.

The works below are by Mehrdad, Bridget Baldwin and Jane McCulla.

This exhibition is unmissable so please join us for a little glass of something and nibbles at the opening night on Friday 4th March at 5.00pm and enjoy the amazing works. Some of artists will be present and you can chat to them about their work.

The exhibition runs until the 28th March.

Please go ahead and 'like' the [facebook](#) page where all updates will be posted.

Please also share with your friends and colleagues! You can also visit the website at [www.oxfordstreetart.co.nz](http://www.oxfordstreetart.co.nz).

Don't forget our current exhibition of works by Frankie Bakker and Michelle Clarke runs until next Sunday 28th February. You still have time to see works by these amazing emerging artists so come along to our little gallery in the Historic town of Lyttelton.

Finally we would like to thank Holly Cunningham, Reuben Romany and Mark Soltero without whose help and advice, putting this exhibition together would have been challenging to say the least.

Best wishes  
Madhu and Tim Rees