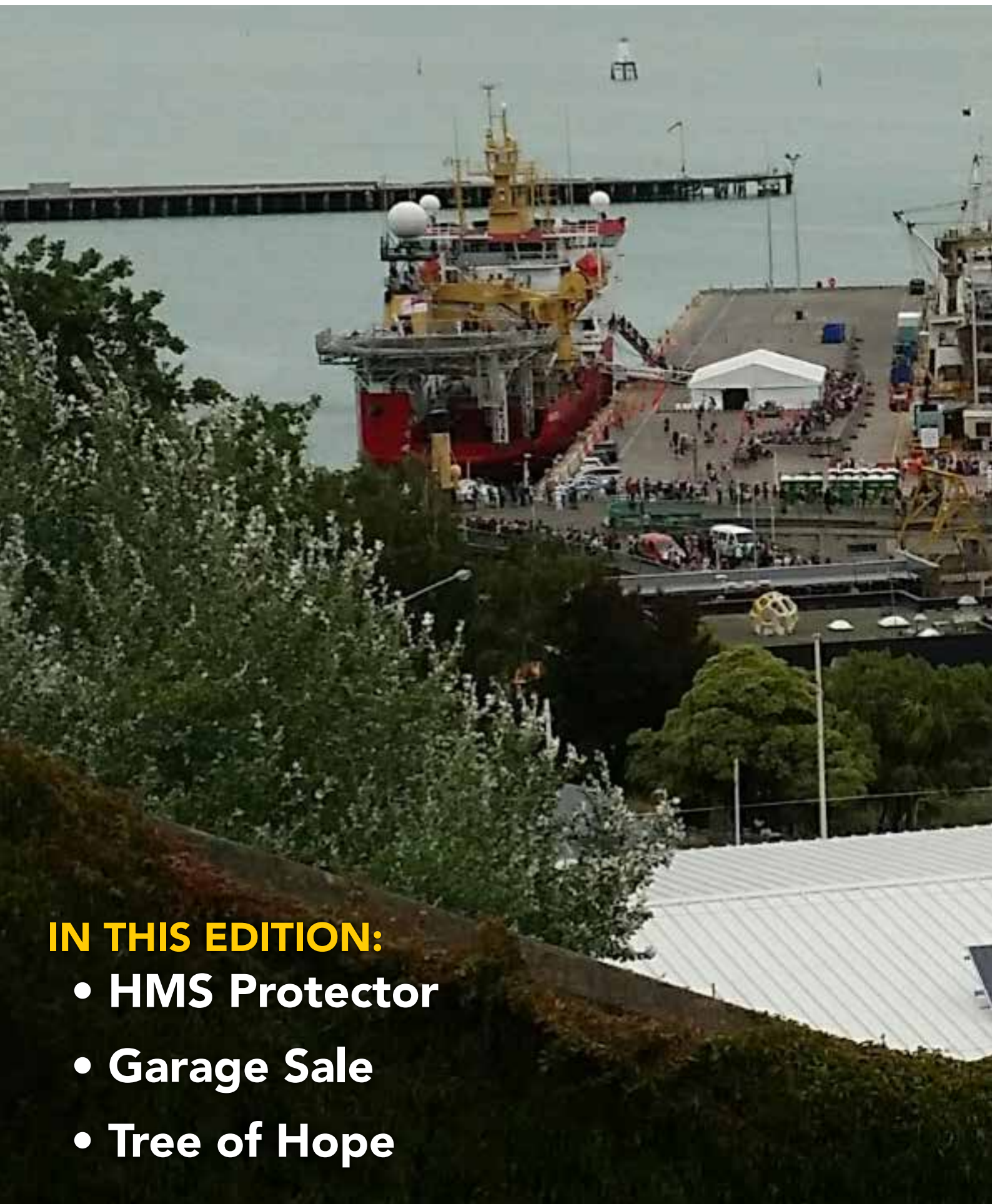


Next issue date: 16th Feb

LYTTELTON REVIEW

January 2016 • Issue: 159

PURAU • DIAMOND HARBOUR • CHURCH BAY • CHARTERIS BAY • GOVERNORS BAY • RAPAKI • CASS BAY • CORSAIR BAY • LYTTELTON



IN THIS EDITION:

- HMS Protector
- Garage Sale
- Tree of Hope



HMS Protector

A small wreath laying ceremony was held in Lyttelton on Thursday January 28th. Captain Rory Bryan and Councillor Andrew Turner placed a wreath at the cenotaph. They were accompanied by Community Board Chair Paula Smith, and a representative from the Port Company.



Next Issue date: 16th February 2016.

Content Deadline: 5pm Friday 12th February 2016.

Review Creators

Lyttelton Harbour Review is a 100% voluntary community newsletter initiative developed after the February 2011 earthquake. It's a Lyttelton Harbour Information Centre initiative produced by Chairperson Wendy Everingham and Committee Member Jenny-Lee Love.

The objective of the Lyttelton Harbour Review is to help keep local residents informed with what is going on in the wider Lyttelton Harbour community. Of course the success of the Lyttelton Harbour Review could not be possible without the ongoing support and enthusiasm from the wider community.

A big thank you goes out to everyone who sends information; is willing to be interviewed or lets us know what might be happening in the neighbourhood. The Lyttelton Harbour Review project would not be possible without you all.

If you have an event, topic, sport announcement, fundraiser or cause that you would like to share with the harbour community, then Wendy or Jenny-Lee would love to hear from you:

Wendy Everingham

Office: 328 9093

Mobile: 021 047 6144

Email: infocentre@lyttelton.net.nz

Content Deadline: 5pm Friday

Jenny-Lee Love

Email: lytteltonreview328@gmail.com

Subscribe to the Review:

Email either Wendy or Jenny-Lee with the words "Subscribe Me" in the subject line and the Lyttelton Harbour Review will be delivered to your inbox.

In 2016 the Lyttelton Harbour Review is produced fortnightly. Any important information between times will be emailed as a Lyttel Broadcast if necessary.

Hard Copies of the Review are available at:

Fat Tony's

Lyttelton Community House

Lyttelton Harbour Information Centre

Lyttelton Library

Lyttelton Top Club

Back Copies Available to Download:

www.lytteltonharbour.info

New Features

To you our reader, we welcome a new opportunity to have your say and invite "letters to the editor". All topics big or small, no more than 250 words, no images. We will include any article but reserve the right to publish. Of course no offensive material will be accepted. Your chance to have a say about what ever you want.

Please send all copy to
lytteltonreview328@gmail.com

We look forward to expressing your views and/or ideas to the community.

We would also like to start a classifieds page for anything people are wanting to sell, buy, offer for free, exchange, odd jobs, births, weddings and deaths.

50 WORKS GALLERY

You are cordially invited to the opening of
LISA POWERS PHOTOGRAPHS: PAST AND PRESENT
4th February 6pm 50 London Street, Lyttelton





Mountain Guide, Humanitarian Logistician.... to Chimney Sweep and Difficult Access Maintenance

Many interesting people seem to end up around the shores of Lyttelton Harbour. Bruno Kowalczewski is no exception. Originally from France the early part of his life was spent having fun and doing all sorts of adventurous activities. The mountains were a natural calling for him so he built a career around mountain guiding, caving, abseiling jobs and hang gliding.

Then an opportunity to go to Madagascar appeared and an opening to work with Doctors without Borders.

For many years he had the opportunity to act as a logistician and field co-ordinator for this organisation. This role meant he became very adept at problem solving and making things work from very little. You could say became very Kiwi in "number 8 wire solutions". This work saw him working in Sri Lanka, Sierra Leone, South Sudan, Liberia, Nepal, Indonesia and Chad.

He met his Kiwi wife during assignment in Pakistan. At that point Pakistan had suffered a severe earthquake. 86,000 people had died in this disaster! Life in the third world was a really interesting experience for them both however there comes a time when you have children and life in the third world and in danger zones isn't quite so easy. In 2005 they returned to Christchurch and they settled in Diamond Harbour. A little more travelling happened in New Zealand and for a time they moved to Auckland. The family is now back in Diamond Harbour and Bruno is developing his third career path.

"I was looking for a role that I could transfer my former skills to a local level" he said. He wanted a job that could use his rope, climbing and practical skills.

With a mentor in Blenheim he set about training in chimney cleaning and wood burner maintenance. He now specialises in difficult to access maintenance jobs including cleaning and maintaining chimneys, pellet fires and gutters. He has also undertaken a variety of other jobs with access issues on or around the roof. His great rope skills mean he is able to do your difficult jobs without the need for scaffolding as he can safely secure himself with his ropes.

He is now open for business. If you have any of those difficult jobs he's waiting to hear from you.

Bruno: Ph 329 4772 or mobile 0224 010203
www.allclearchimneycleaning.co.nz/

Article Lyttelton Information Centre

Planning Our Community-Grown Dinner

Community members in Lyttelton Harbour are planting and planning for the Community Grown Dinner in March/April. At this event, Giulio Sturla, of Roots Restaurant, will use ingredients grown by the diners themselves to create a harvest feast.

Project Lyttelton holds an annual Harbour Harvest Festival in late March to early April, with workshops and events celebrating the harvest and our relationship with the natural world we are part of. In 2015 one of the events we held was a delicious, intimate dinner for 60 with local and foraged produce, the prelude to 2016's more ambitious project: a fully community grown dinner.

What is a community grown dinner? Put simply, instead of paying for a ticket, if you would like to attend the dinner, you must pledge to grow, forage or otherwise harvest a portion of the ingredients yourself. This could include eggs, honey, fish and of course vegetables and fruits of any kind. Inventive chef Giulio will concoct a beautiful meal using the ingredients you provide.

Events co-ordinator Lucette Hindin has set up a facebook page and email newsletter to keep in touch with people who are planning to attend the dinner. Tips about gardening, useful links and the right timing for planting seeds and seedlings are some of the things you will receive if you sign up to the newsletter, which can be done via this link <http://eepurl.com/bsDT2T> or by emailing events@lyttelton.net.nz.

You can also like the Facebook page <https://www.facebook.com/Lyttelton-Community-Grown-Dinner-726112480841653/>

"I'm very excited about this event." says Lucette "So many people in our community garden, farm and forage, and there's not much opportunity for that to be recognised and celebrated. In some parts of the world they have competitions for who can grow the biggest pumpkin or tomato. Here, we have more of a collaborative event where we all get to feast on one another's produce."

Article Lucette Hindin Project Lyttelton


KOHÄ

LIVE


AT THE POINT

SUNDAY SESSIONS
GODLEY HOUSE
DIAMOND HARBOUR


1:00PM - 3:00PM
03 JAN - 14 FEB




Pretty please and thank yous to the sponsors below that make this happen




PRESERVED




BLACK CAT CRUISES
LYTTELTON & AKAROA




metro




TAG
design



min
sarginson
MREINZ



deccan
ELECTRICAL



Peninsula
Electrical

03/1 the eastern

10/1 sans tribe

17/1 phoebe leytan nomads

24/1 fiona pears

31/1 the brooms

07/2 lindon puffin

14/2 los farsantes



Visit the Garage Sale Re-Opens February 3rd

Prior to Christmas and over the holiday period the Garage Sale team have been getting ready for our return to 54a Oxford Street, our former home behind the pool. The transformation of the old site is amazing. No rusty old garage door anymore exposing all our treasures to the wind. That has been replaced with tri-folding doors and new windows.

The entire interior has been refitted, new shelves, new lights, freshly painted, plus the added bonus of more space. A former storage area has been converted to a purpose built library and a new sorting area enables the easy processing of your donated goods.

"It's been quite a mission getting it all sorted and will be wonderful to have the Garage Sale rehoused in a lovely indoor space", said Project Lyttelton Manager Anne Jaiswal.

"It's been a major project. The re-fit has cost \$28,000 plus many hours of staff and volunteer time," Anne said.

Along with all the volunteers and staff who have helped we'd also like to thank Resene Paints who donated most of the paint. Project Lyttelton has also contributed \$6000 from its own reserves which we had been saving over the year. In addition,

all surpluses earned from the Garage Sale this financial year that would normally subsidise other Project Lyttelton projects has been reinvested to the refurbishment project. A private donation of \$5000 and a \$1000 grant from the Lyttelton Mount Herbert Community Board have also helped us reach our target.

By the end of March, we will have paid off all the money for the upgrade. At this point the Garage Sale will once again be open to the wider community for fund raising every second Saturday and Wednesday. During February and March, we would really appreciate extra volunteer support from the community groups who have fundraised over the past year. Please contact the team if you can supply volunteers for a Saturday shift. To register for fundraising opportunities from April onwards please contact Sue-Ellen Sandilands 328 9243 or email office@lyttelton.net.nz

When we re-open on the 3rd of February our normal hours will be 10-4pm Wednesday, Thursday, Friday and 10-1pm Saturday. In the mean time we look forward to welcoming all our regular customers back again.

Article Garage Sale





SPIRIT OF ADVENTURE TRUST

Lyttelton Sailing (afternoon)

February 25th Bookings 0800472454

In between our Youth Development voyages, we invite the public to get a taste of the Spirit experience on one of our public sailings. Anyone is welcome to join us on a public sailing. Either relax and enjoy the unique tall ship experience or get involved and pull some sails. The choice is yours. Public Sailings are a great present for a past trainee, keen sailor, or anyone keen for a day out on our beautiful ship. We suggest that sailings are not suited for children under eight years.

Adults \$55pp | Students (16-18yrs) \$30 | Children (10-15ys) \$20 | Past Trainee \$Free

Little Ship Club

Become a Little Ship Club Member Just about the best fun you can have on dry land for \$20.00 - yes our subs are that cheap! Payment can be made online in to our bank account: 03 0802 0094950 00. Please drop us an email advising of your deposit so we can add your details to our member's register. For more information visit: <https://littleshipclubcanterbury.wordpress.com/2015/08/06/sailing-solo/>

Learn To Windsurf

For those interested in Learning to Windsurf Naval Point Club Lyttelton run a program on Saturday Mornings in conjunction with Canterbury Windsports Association. Please contact the office if you want to know more. Ph 328 7029

Lytel Gallery

Expressions of Interest

Our community gallery space has some vacancies coming up. If you would like to host a month exhibition please contact our curator Reuben Romany. 328 7542. Applications available to residents of Lyttelton Harbour.

Lyttelton Community House Fundraiser

Lyttelton community house is looking to holding a stall at the Lyttelton arts and craft market on a Saturday in the foreseeable future. This will be to raise funds and as well as letting people know what we do, we have kindly had wooden toys made and donated to us by the MENZ SHED. However we are wondering if anyone out crafty out there is willing to make and donate handmade arts and crafts that we can sell on behalf of Lyttelton community house. Maybe knitted goods, homemade cards felted toys. (no food goods). Call 741 1427

Lyttelton Library

The Library will be closed from January 30th to February 15th while it relocates to it's temporary facility at the Lyttelton Recreational Centre Winchester Street Lyttelton.

Urumau Weeders

Join the Team – Meets Monthly

On the last Sunday of each month a group of volunteers meet up for a couple of hours to carry out weed control work in Urumau Reserve. It is interesting and enjoyable work and is not at all strenuous. We are currently searching the outer fringes of the planting areas for re-infestation of target weeds, sycamore, boneseed and old man's beard. We feel that it is important that these weeds do not take hold while the plantings are young and then continue to grow with the maturing native bush. Once the native bush is established and "clean", it is extremely resilient to weeds. This, together with the planting programme, has been the Committee's focus for the past 10 years, interrupted only by the closure of Urumau during the earthquake.

If you have a couple of hours to spare come along and bring your favourite garden gloves and secateurs. Meet up at the Foster Terrace entrance steps at 1 pm. Tools are available at this point.

For your diary - Working dates for the year are:

February 28th

March 27th

April 24th

May 29th

June 26th

July 31st

August 28th

September 25th

October 30th

November 27th

If it is raining or the bush is very wet, the workday will be postponed to the last Sunday of the following month.

For Timebankers, credits apply. Enquiries to 328 9204 evenings

The Urumau Weed Team
Geoff Knight, Brian Downey, Helen Greenfield

Lyttelton Recreation Centre

The Recreation Centre is re-opening Saturday February 20th. Save this date in your diary. A community open day is planned.

Corsair Bay Footpath

Following temporary repairs to the storm water pipe line at Corsair Bay, the public footpath was reopened late 2015.

Recent rainfall has resulted in erosion around the pipeline. Due to safety concerns for public using the footpath, the footpath has had to be closed again temporarily. Starting next week, further investigations will be conducted to identify a suitable solution to enable the reopening of the public footpath.



Treat your Valentine
Every girl loves pampering

Cut treatment (with massage)
Style and finish \$90
Ready for a romantic night out.
Saturday 13 February

VOUCHERS AVAILABLE

34 London St Lyttelton
328 8859
honeycombhair@extra.co.nz



Oxford Street Art is now looking for Submissions for a group exhibition.

4-28 March 2016

'LANDSCAPES'



Information and Expression of Interest form at :

Contact: +64 0274298505
email: thecurator@oxfordstreetart.co.nz

WWW.OXFORDSTREETART.CO.NZ

Tree of Hope THANK YOU

Thank you Lyttelton community for supporting "The Tree of Hope" project again. As always there were many lovely gifts to distribute and many recipients who got very pleasant surprises.

One appreciative recipient wrote,
"I am writing to express my thanks to you for the very unexpected but most welcome gift from your organisation given to me yesterday. I had no idea that I was an eligible person to be included in your distribution of Christmas gifts. I am very conscious and appreciative of the many kindnesses of the people of Lyttelton"

Lyttelton Lions also expressed their appreciation to "Tree of Hope" founder Teresa Cameron. Teresa was presented with a Lyttelton Lions appreciation certificate and gift package just prior to Christmas in recognition of the great work she has done with this project, her role at the Garage Sale and all the other acts of kindness she demonstrates in the Lyttelton community.

Organisers would like to thank you all. Donors, helpers and nominators. For all involved it's a lovely way to thank people and spread some Christmas cheer.





Lyttelton Summerfest

Family Picnic Day - Quail Island

If visiting Ōtamahua / Quail Island is something you've always meant to do but haven't quite got around to, now's your chance with the Lyttelton SummerFest Family Picnic Day on Sunday the 7th February.

As part of the day's events ecologist Tina Troup will lead a guided walk in which participants will learn about the wildlife that make Quail Island their home. "Lots of people don't realize that the white-flippered penguin (kōrora) live on Quail Island" explains organizer Sarah Pritchett. It is also an opportunity for people to see the amazing work of the Quail Island Ecological Restoration Trust which has been regenerating native bush there since the 1982. "It is incredible to see how well the bush is growing in this drought-prone island that has no natural fresh water sources." Sarah says.

Tina will also explain the fascinating ways in which humans have utilised this tāonga of the Lyttelton Harbour. While there was never a permanent Māori settlement there it was used as a place to gather food and Ōtamahua translates as "the place where the children gather eggs". European settlers took advantage of the relative remoteness of the island and used it as a quarantine station for both animals and humans, as well as for patients with leprosy.

For those who would prefer to stay around the beach, there will be beach volleyball and petanque and a beach clean up. As part of the picnic day Black Cat are offering a special price of \$25 return per adult and \$12.50 per child for the ferry. The ferry will leave Lyttelton at approx 10am and return 3.30pm. Bookings are essential (unless you are making your own way to Quail Island by private boat or kayak). Please book at events@lyttelton.net.nz

Article Project Lyttelton







Lyttelton: Still the alternative arts hub of Christchurch

In years gone by, Lyttelton was a working-class port town which attracted alternative types and artists much like Port Chalmers in Dunedin and Island Bay in Wellington. Changing times have seen it become another suburb of Christchurch and much more integrated into the culture and life of the city. So, does Lyttelton still have it when it comes to arts and innovation?

Lucette Hindin, Events Co-ordinator for Project Lyttelton, has been busy creating a festival which attempts to answer that question – and influence the future of her town.

Lyttelton SummerFest draws together a wide range of activities on offer around Lyttelton Harbour – most of them arts or music events. “28 out of the 34 events are arts or music events. The others are more family and community events, like The Big Pirate Picnic Beach Party at Corsair Bay on February 21st” says Hindin.

Project Lyttelton, the community organisation behind this festival and others like the midwinter Lyttelton Harbour Festival of Lights, is known for its innovative projects like the Lyttelton Harbour TimeBank (recently featured in *The Guardian*). Hindin explains that “we are excited when people come up with new ideas to try out and we really want this festival to help some of the niche arts and emerging artists and musicians to have the opportunity to put themselves out there.”

Coralie Winn, founder of Gap Filler, has recently moved to Lyttelton. She says: “Lyttelton has a variety of creative folk in its midst: musicians, poets, painters, potters and more. In terms of a concentration of creative people, yes, Lyttelton has that and is an arts hub, yes indeed. You can see it in the homes, gardens

of the port town and on the Main Street daily. But that’s just one of the reasons I live here.”

Specifically tailored to supporting and encouraging the alternative arts culture is “Strange Bedfellows,” which will see its third production in this festival. This project takes pairs of artists from different disciplines, who have never worked together, and throws them together to collaborate over a three week period. At the end of that time, they present their work to an audience. “It catalyses a whole new creative journey for the artists involved,” says Hindin, who really hopes this project will continue to foster the arts community and culture of the harbour.

Alongside the three events Project Lyttelton puts on, the festival – now a month long – acts as a platform for other community groups and businesses to produce and promote events. This year’s programme includes the SCIRT World Buskers Festival at Albion Square, workshops in Playback Theatre and Interplay, Dr. Sketchy’s Anti-Art School at the Lyttelton Coffee Company, Only Bones physical theatre, two sonic art events at the Lyttelton Timeball and the Nostalgia Festival at Ferrymead Historic Park in Heathcote.

Favourite Lyttelton venues like the Wunderbar and Civil and Naval continue to offer great music events, and the Live at the Point programme runs through January and into February at Godley Grounds, Diamond Harbour.

Lyttelton SummerFest runs January 24 to February 22. Programmes are available at your local library or on www.lyttelton.net.nz

Article Project Lyttelton

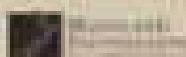
LYTTELTON SUMMERFEST

24 JAN - 22 FEB 2016

LIVE THEATRE - COLLABORATIVE ARTS - PIRATE BEACH PARTY - PLAYBACK THEATRE - MUSIC
NOSTALGIA FESTIVAL - DR SKETCHYS - SCOT WORLD BUSKERS FESTIVAL - SOUND ART

PROGRAMMES AVAILABLE AT YOUR LOCAL LIBRARY OR LYTTELTON.NET.NZ

 [LYTTELTON SUMMERFEST](#)



Mrs. Painter. (A True Story) By John Riminton.

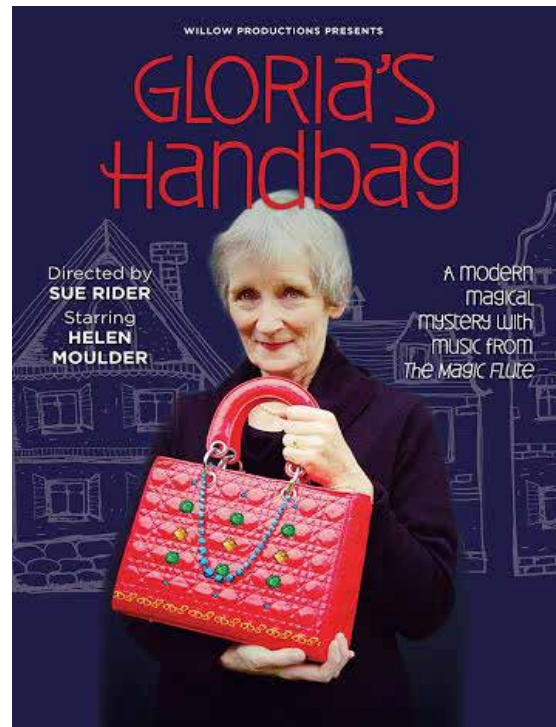
There was a slight, reminiscent smile on the sad-eyed face of the woman who was helping a nervous young man with his badly-knotted black bow-tie as he mentally rehearsed his "impromptu" remarks before going on stage.

I was that young man and the woman was Mrs. Painter, the time the end of the school year 1945. For almost everyone, parents and guests in the packed Great Hall it was a time of optimism and rejoicing. The Occupation had ended; those who had evacuated Jersey in 1940 were returning to their homes; new masters, many demobilised from the Armed Services, were being appointed to replace those who had struggled to maintain the curriculum during the difficult years; College field was being cleared of the material that the Germans had dumped there and the laboratories were being re-equipped and stocked. To celebrate all this, it had been decided to stage a Review comprising sketches, individual and group performances and I had been designated to "provide continuity", probably because I owned a handed-down dinner suit.

Mrs. Painter had two distinguished sons who had gone through College. The younger, Jacko to all, was a year or so ahead of me while her elder son, Peter had left in 1943 after a dazzling school career, Captain of his House, a School Prefect, colours in cricket and hockey, his ambition had been to join the Royal Navy but the family did not get away before the Germans arrived. Instead, late in 1943 he and his father had been arrested by the Germans for being in possession of a wireless set. They had been deported and nothing further was heard of them during the war. Then, in June 1945, a month after our Liberation, word came through that Peter had died of bronchial pneumonia after, in the words of the College's Second Book of Remembrance "suffering many privations and hardships in different camps and prisons. His father died some time later"

Time to go on stage and start the Review. Putting a final touch to my make-up, Mrs. Painter gave me a gentle kiss on the cheek and wished me luck.

Would you like a solo play in your home, meeting room, retirement village, church, little theatre or community hall?



South Island Tour – April 1 - 22 2016

"It is imperative to have a good handbag when you're on the way out"

It is 2021 in Nelson and Gloria, aged 97, hasn't long to live. Her son Craig is pushing her to move to a "retireville" but she wants to die in her own home. On a whim, Gloria buys an extraordinary designer handbag. This purchase sets off a series of unusual events which transform Gloria's remaining days and enable her to send a message to the future.

***"Funny, poignant, thought provoking"* – Sunny Amey**

***"Moulder is a consummate performer"* – Capital Times**

***"[Helen Moulder] demonstrates what the art of acting is all about"* – The Press**

Written by Helen Moulder and Sue Rider (*Meeting Karpovsky*, *Playing Miss Havisham*); handbag design by Gillie Coxill; first production – Circa Theatre (March/April 2014)

LENGTH: One hour 20 minutes, no interval

"Gloria's Handbag packs in six characters, expert storytelling, opera singing and magic tricks; all performed by a cast of one."

- Keeping up with NZ

Metro Cards and Top-ups

These services will not be available from the Lyttelton Library while it is closed for the move to its temporary location in the Trinity Hall, Lyttelton Recreation Centre, from 30 January to 15 February.

Top-up with cash on the bus or ferry, visit the Bus Interchange in Colombo Street to top-up or purchase a new card, or go to the Metro Info website at <http://www.metroinfo.co.nz>



Lyttelton Tunnel Bylaw changes

Have your say

JANUARY 2016



HAVE YOUR SAY ON THE LYTTTELTON TUNNEL BYLAW CHANGES

The Lyttelton Tunnel Bylaw covers the tunnel's safety rules and gives the tunnel control officers the authority they need to manage the tunnel and ensure safety for all users.

The current bylaw needs to be updated to ensure it meets current needs and matches changes in other transport legislation.

The proposed changes to the tunnel bylaw are:

- » A clearer policy on vehicles transporting loose material (eg sand, soil or fertiliser). These loads must be covered both before and after load delivery to reduce dust and dirt in the tunnel.
- » Changing the length of road covered by the bylaw on either side of the tunnel.
- » A clearer policy on access through the tunnel for dangerous goods and overdimension vehicles.
- » Updating legislation references and clarifying how the bylaw relates to other legislation.

If you would like to find out more about these changes and provide feedback please visit **www.nzta.govt.nz/projects/lyttelton-tunnel**.

An online feedback form will be available until the close of the consultation period (22 February 2016).



Earthquake support to continue in city libraries

In the Know Community hosts

Although the *In the Know* Hub has closed, support is continuing for people still dealing with claims, repairs and rebuilds. *In the Know* Community hosts will be present at some Christchurch City Libraries from 18 January, 2016. They will also be available at various local community events throughout the summer.

The hosts will listen to homeowners' questions and concerns, help them figure out their next steps, and connect them with the right people to make progress.

Homeowners should come and chat with a host if:

- they're unsure of their next step;
- they're not clear what their options are;
- they don't know who they should talk to;
- they're having trouble making progress.

Community hosts will be available at these Christchurch City Libraries:

Mondays	9am-12pm	Christchurch South & New Brighton Libraries
	1-4pm	Linwood Library
Tuesdays	9am-12pm	Shirley Library
Wednesdays	1-4pm	Fendalton Library

For more info contact Bob Henderson on 020 4089 2439 or visit www.intheknow.org.nz

A Kallo Collective and Show Pony production

Only Bones

Created by Thomas Monckton and Gemma Tweedie

Performed by Thomas Monckton

Sound design by Tuomas Norvio

International physical theatre company Kallo Collective bring their award-winning new show Only Bones to the Lyttelton Summer Festival at the temporary home of The Loons Theatre Trust.

ONLY BONES is a solo performance created by Thom Monckton and Gemma Tweedie with sound design by Helsinki based Finn; Tuomas Norvio. Developed in artist residencies in Paris and Helsinki ONLY BONES is making Lyttelton it's one and only NZ stop before heading to the world stage in Edinburgh Fringe and Avignon OFF Festivals.



Thom and Gemma are a couple who met in Lyttelton in 2010. They have been living in Paris for the last 2 years until recently moving to Helsinki. Gemma and Thom both studied at the prestigious physical theatre school of Jacques Lecoq in Paris at different times and in different areas of the curriculum. Combining Gemma's Fine Arts background with Thom's performance and circus background they have been producing experimental works in Paris and New Zealand, winning the Best Physical Theatre Award at the 2015 NZ Fringe for their demos of Chameleon and Only Bones.

The quirky low-tech show involves one light, no text, no narrative, no set, and a stage area of little more than 1m2. Using body manipulation by an off-the-wall character performed by Thom Monckton Only Bones promises "...extraordinary inventiveness created by a limitless imagination..." - Theatreview

As a further twist ONLY BONES ticket prices are according to the size of your wallet. You pay a percentage of what you earned last week.

Lyttelton Summer Festival
at The Loons Theatre Trust
Lyttelton Primary School Hall
Hill Site on Veolas Road

ONLY BONES

January 29th – 31st & February 3rd – 7th

7.30PM

Extra show 7.2. @ 4PM

Tickets: Approximately 3% of your weekly earnings – you choose the income bracket and pay the corresponding ticket price!

The Joy of InterPlay!

at Lyttelton Summer Fest
 Sunday, 14th February, 1 – 5pm,
 Union Chapel, 40 Winchester St,
 \$40 regular, \$25 conc. or whatever's affordable.



Join us for body-centred play guaranteed to delight and inspire you. InterPlay is an easy, creative practice combining movement, voice, story and reflection. It's nurturing and liberating, simple and surprising, and a special gift to the child in yourself. InterPlay isn't focused on performance, so there is no right or wrong way to do it. Through a sequence of easy-to-follow forms, you'll get to:



Shake off seriousness !

Dance into the moment !

Play with your voice !

Revel in connecting with others !

You'll also hear how InterPlay is a non-profit movement offering mindful and spirited ways to heal and build community through its Life Practice and Leadership programmes.

InterPlay began in California 25 years ago and is now practised around the world.

See www.interplay.org &
www.interplayaus.com.au

To register for 14th Feb. or for info on other InterPlay events, contact Belinda Meares at

Natural Movement & Creative Wellbeing

03 314 3406, belindameares@live.com.au or
www.belindameares.co.nz/events or

Facebook: [InterPlay New Zealand](https://www.facebook.com/InterPlayNewZealand)





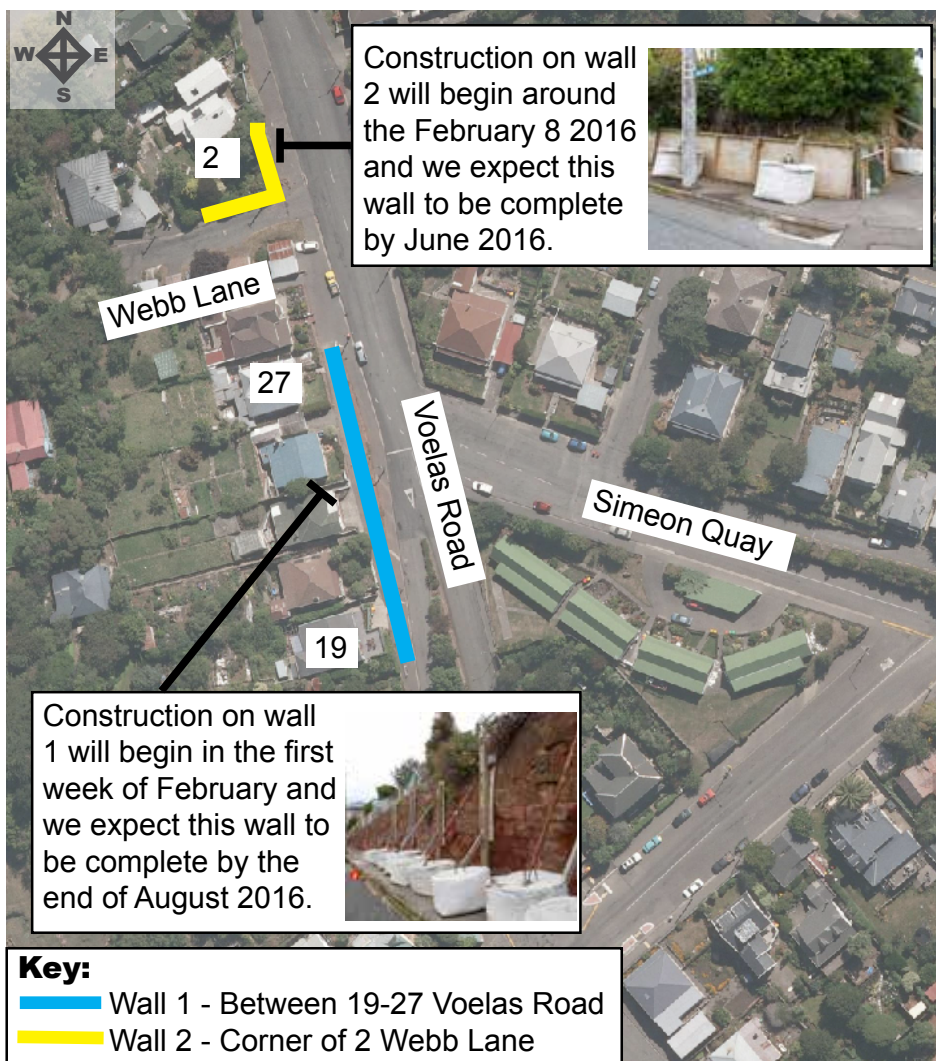
Rebuilding earthquake damaged roads,
water, wastewater and storm water pipes.

21 December 2015

Work notice: Voelas Road and Webb Lane, Lyttelton, retaining wall repairs

What	Service relocation and retaining wall repairs
Where	Voelas Road and Webb Lane, Lyttelton
When	From Tuesday 12 January 2016

Where



What we are doing:

Fulton Hogan are repairing two earthquake damaged retaining walls on Voelas Road. Wall 1 will consist of installing 85 soil nails and topped with a concrete cantilever wall. Wall 2 will consist of installing 31 soil nails and concrete facing. In order to repair wall 1 we first have to relocate the services on Voelas Road. These services include temporarily relocating Chorus lines, and permanently relocating the wastewater main and the water sub main.

Please turn over



Email: info@scirt.co.nz
www.strongerchristchurch.govt.nz
 Follow us on Twitter @SCIRT_info



Fulton Hogan

Christchurch
City Council

Programme funded by



New Zealand Government



Rebuilding earthquake damaged roads,
water, wastewater and storm water pipes.

21 December 2015

Work notice: Canterbury Street, Lyttelton, wastewater and storm water repairs

What	Repairs to the earthquake damaged wastewater and storm water network
Where	Canterbury Street, between Ripon Street and London Street
When	Tuesday 12 January for around two months

Where:



Sourced from LINZ data, Crown Copyright reserved

Key:

- Storm water dig down repair
- Wastewater dig down repair
- Wastewater lateral replacement
- Patch repair

What we are doing:



From Tuesday 12 January we will begin work repairing the earthquake damaged wastewater network following this we will begin repairs to the storm water network. We will use a combination of patch repairs using pipe lining, a trenchless repair method, and open trenching.

Traffic impact:



- Two way traffic will be maintained with combination of priority give-way, traffic light and stop/go systems, and lane shifts. Please turn over for an example of traffic management.
- Please lookout for changes to the traffic management and drive to the changed traffic conditions.
- We do not expect to need to block driveway access. If driveway access cannot be maintained we will leave and access restriction notice in your letterbox the day before to allow you time to move your car.



Email: info@scirt.co.nz
www.strongerchristchurch.govt.nz
 Follow us on Twitter @SCIRT_info



Programme funded by
 Christchurch City Council **New Zealand Government**



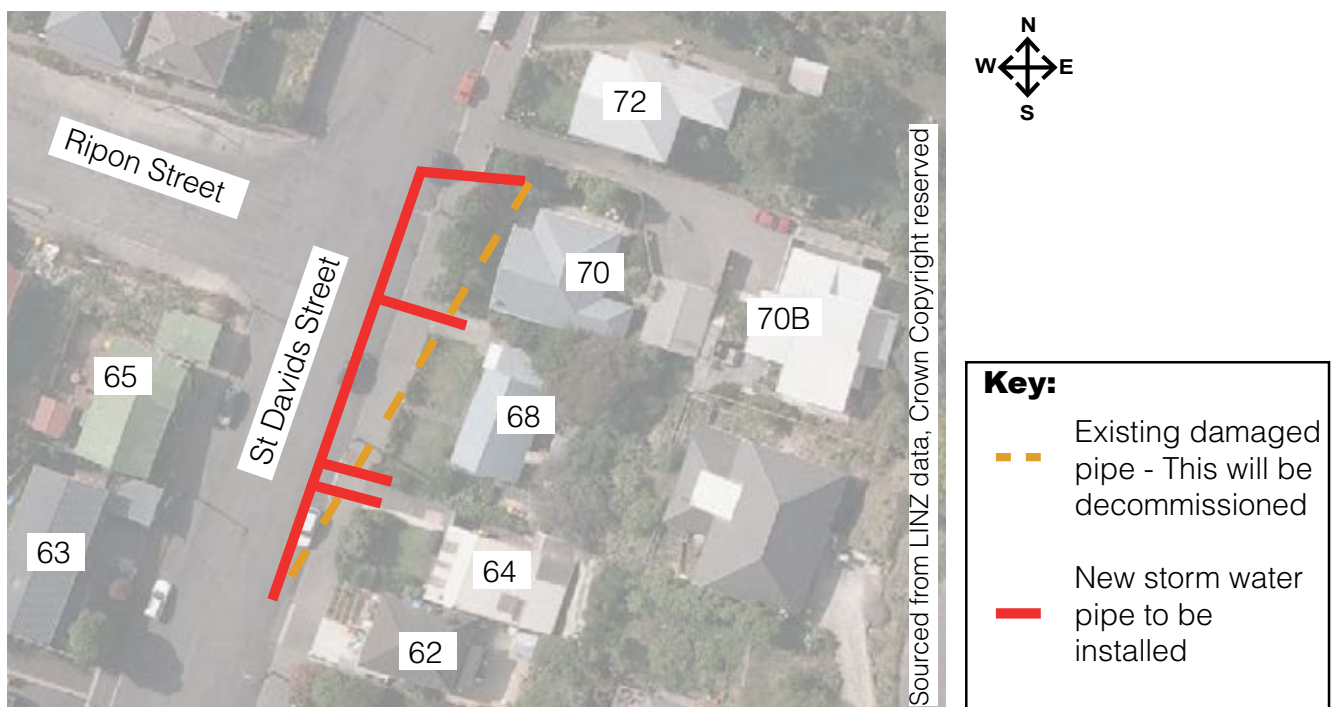
Rebuilding earthquake damaged roads,
water, wastewater and storm water pipes.

22 December 2015

Work notice: St Davids Street, Lyttelton, storm water repairs

What	Replace earthquake damaged section of the storm water main
Where	St Davids Street, Lyttelton
When	From Thursday 14 January 2016 for around two months

Where:



What are we doing:

- The storm water pipe that runs between 70 and 62 St David Street is badly damaged and needs to be replaced. This pipe is a Council asset that runs through the front of private property.
- We are realigning this section of the storm water pipe and relaying it under the road along St Davids Street. Once the new storm water main is completed we will grout and decommission the pipe under the front of these properties.
- As the alignment of the storm water main is changing the private laterals, the pipe that runs from private property to the storm water main, will need to be reconnected into the new main. To do this we will need to relay sections of lateral at the front of the 64, 68 and 70 St Davids Street.

Please turn over



Email: info@scirt.co.nz
www.strongerchristchurch.govt.nz
 Follow us on Twitter @SCIRT_info



Christchurch
City Council

Programme funded by

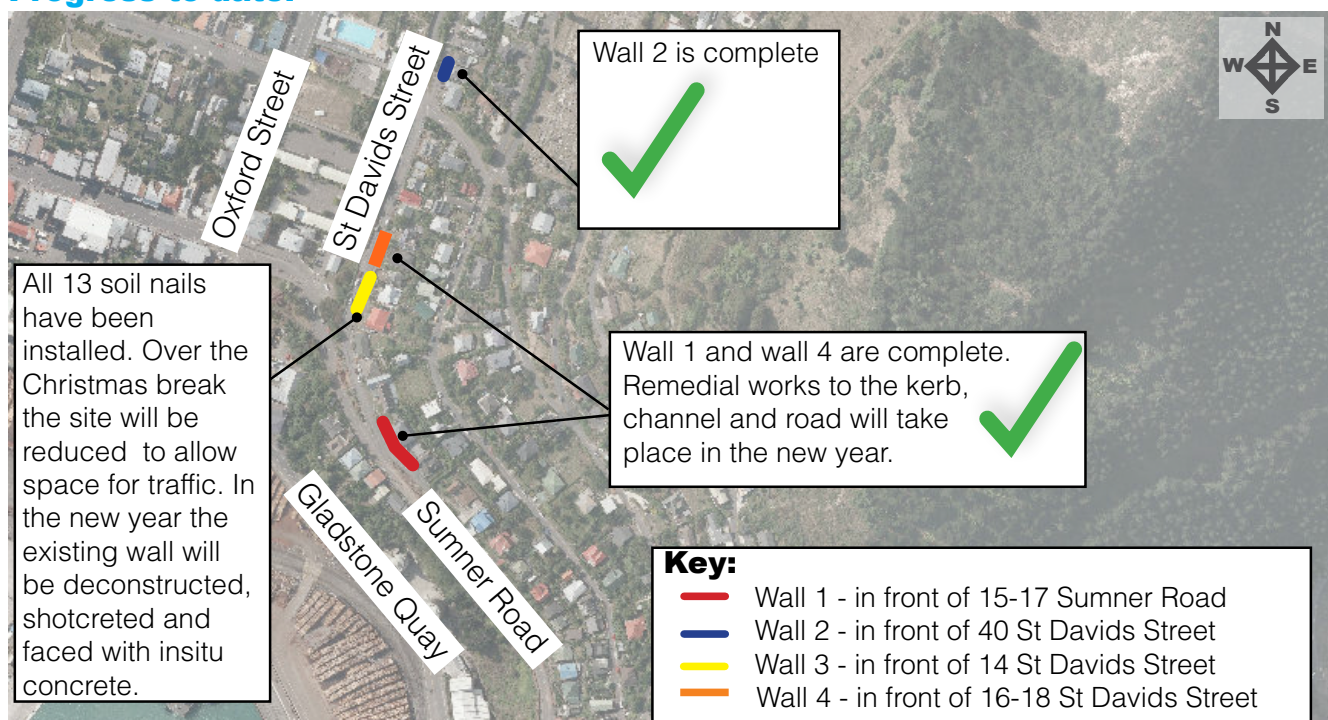


New Zealand Government

Work notice update: St Davids Street, Lyttelton, retaining wall repairs

What	Retaining wall repairs
Where	St Davids Street
When	Ongoing until March 2016

Progress to date:



Christmas update:

From Wednesday 23 December until Tuesday 12 January 2016 the crews will be taking a break for the festive season. Each retaining wall site will be reduced to allow traffic through over the festive season. If there are any emergencies on site over this period please call the Christchurch City Council on 941 8999. Fulton Hogan, on behalf of SCIRT, would like to thank residents along St Davids Street for their support and cooperation. We hope you have a safe and happy festive season.



Completed wall at 40 St Davids Street

Need more information?

Call Fulton Hogan on: 0800 277 34 34 **or email us at:** rebuildinfo@fultonhogan.com



Email: info@scirt.co.nz
www.strongerchristchurch.govt.nz
 Follow us on Twitter @SCIRT_info



Fulton Hogan

Christchurch
City Council

Programme funded by



New Zealand Government

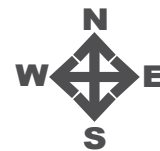
Work notice: Sutton Quay, Lyttelton, bridge wall repairs

What	Repairs to the earthquake damaged wall of the Sutton Quay Bridge
Where	The east side of the Heathcote Valley Railway Tunnel under the Sutton Quay Bridge
When	From 18 January until May 2016. The work will be carried out over the weekends only, from Saturday 4pm until 5am Monday

Where:



Sourced from LINZ data, Crown Copyright reserved



Key:



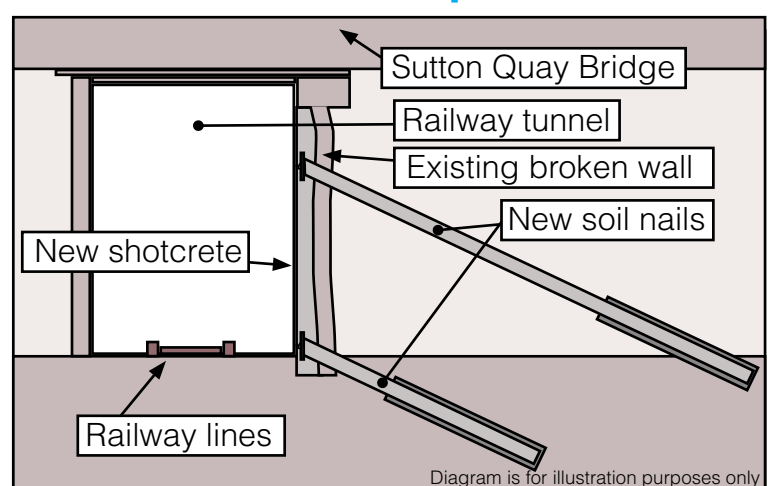
How we will fix the wall:

- Services (like fresh water pipes and any cables) will need to be moved.
- Soil nails will be installed. This involves drilling and grouting a series of steel bars into the soil or rock behind the retaining wall. The nails help strengthen the wall.
- Dig out and pour new concrete foundations.
- Shotcrete will be sprayed to the surface of the wall. Shotcrete is a mixture of cement, aggregate, and water conveyed by compressed air to a spray gun.

The wall:



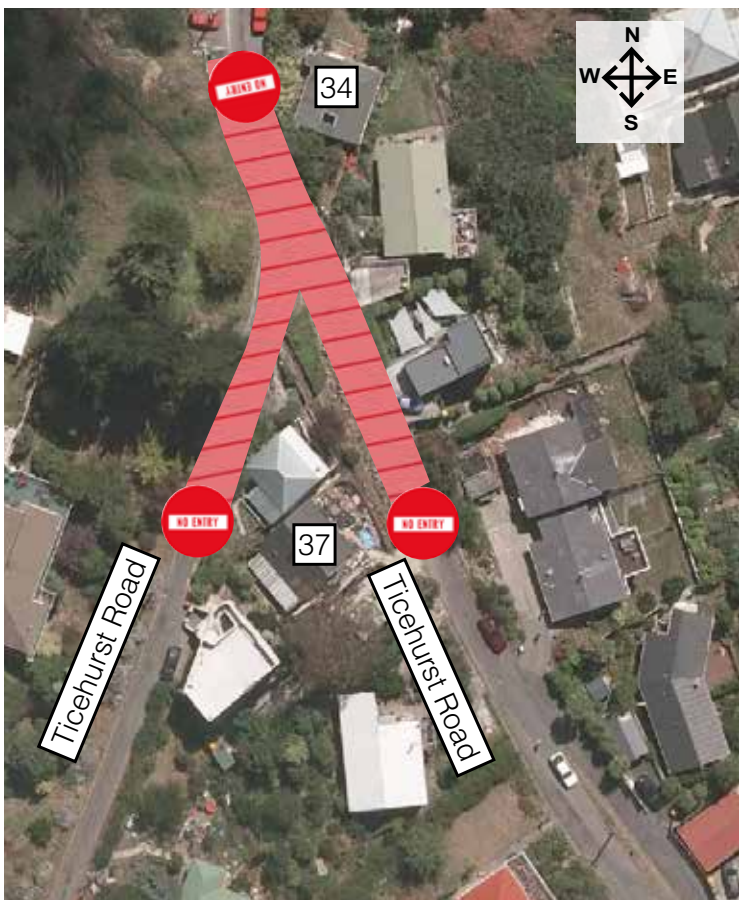
A cross section of the repairs:



Work notice: Ticehurst Road, Lyttelton, wastewater repairs

What	Patch repairs to segments of the wastewater pipe
Where	Ticehurst Road, between house number 32 and 34
When	The road will be closed on Wednesday 3 February for around two days

Where:



Sourced from LINZ data, Crown Copyright reserved

What:

Between 7am and 6pm on Wednesday 3 February and Thursday 4 February the road will be closed from 34 to 37 Ticehurst Road. Because of the narrow road width it will not be possible to allow vehicles past our worksite. Please park outside the road closure if you need to use your car between 7am and 6pm on these dates. The road will be opened up outside of these hours to allow residents vehicle access to their properties at night. Please use Hawkhurst Road as an alternative route. Pedestrian access will be available past the worksite and to properties at all times. We apologise for any inconvenience during these essential earthquake repairs.

Key:

 Road Closure

Need more information?



Call Fulton Hogan on: 0800 277 34 34 (8.30am- 5.00pm Monday - Friday)



Email Fulton Hogan at: rebuildinfo@fultonhogan.com



Visit the SCIRT website: www.strongerchristchurch.govt.nz



Email: info@scirt.co.nz
www.strongerchristchurch.govt.nz
Follow us on Twitter @SCIRT_info



Fulton Hogan

Programme funded by

Christchurch
City Council



New Zealand Government

ROOM FOR RENT: FLATMATE WANTED

01 TEDDINGTON

One single en-suite rooms available at \$200p.w. Power, firewood, water and broadband \$30p.w. Beautiful and warm 2 storey log house with wonderful harbour views on a sunny Teddington farm. Has garden space. Long term preferred. Ph 3299118 See www.bergli.is-great.net

02 LYTTTELTON

Room with own lounge. Very warm with a great view. Off street park. Share with one owner and must like animals. Suit professional, clean and tidy person. Available at \$180p.w. includes expenses. Contact 328 775 or 021 251 7839.

06 DIAMOND HARBOUR

Out The Window Diamond Harbour

Experience the tranquility of Diamond Harbour through our large open "kitchen window" and our Captain's Room in our 2 bedroom 1930's restored cottage. It boasts 2 double bedrooms (sleeps 5 max) (1 room queen, other room king and/or single bunk or two singles. Good indoor outdoor living to patio garden and views by day/night. Off street parking 2 cars, log burner, fully furnished. Good public transport to the city centre and beyond. Photos and online payment available. Fully furnished (\$700 pw excludes power) Ph 027 305 0409 or 027 877 4961

EQC ACCOMMODATION

01 CORSAIR BAY

Accommodation/house fully furnished. Home looking out over Corsair Bay. Bus stop at the bottom of section. Four double bedroom, two living areas, two toilets and double garage with off street parking. No fences, but pets okay by negotiation. Fully furnished. \$900/wk (power not included). Phone connection. Broadband. Call Heather on 027 211 7205 for details.

02 LYTTTELTON

We have rental accommodation available in the Lyttelton area for Earthquake Repairs. Short or Long term, fully furnished, pets negotiable. Please phone Daniel on: 03 377 4939 or 021 994 297.

03 LYTTTELTON.

Lovely 3 bedroom character home, heat pump, log burner, drive on access, stunning views, pets OK \$600 per week. Negotiable. Phone 021 060 2316.

04 CASS BAY

Ideal stay during you EQC Repairs. Governors Bay Road, Cass Bay. \$200 a night. Four bedroom house with great views. Contact Claire 027 878 7867.

05 LYTTTELTON

"Wake up every morning with a view of the harbour, while enjoying peace and quiet away from the city. 43a Exeter Street is a beautiful, warm, historic cottage freshly painted & newly renovated.

This 2 bedroom private cottage is ideal for the family to relax in while your home is being repaired by EQC or on holiday in Christchurch.

Only a 15 minute drive away from the CBD this cottage is fully furnished with all the comforts of home, landline, sky TV and wifi. \$120 a night (pets negotiable). Contact Emma 027 498 7927

Events

WEDNESDAY FEBURARY 3RD

Fat Tony's Happy Hour	5-7pm
Porthole Bar Night with a Future Star	8pm
The Loons Theatre Trust Only Bones	7.30pm

THURSDAY FEBURARY 4TH

Civil and Naval Devlish Mary and the Holy Rollers	9pm
Fat Tony's Happy Hour	5-7pm
The Loons Theatre Trust Only Bones	7.30pm

FRIDAY FEBURARY 5TH

Fat Tony's Happy Hour	5-7pm
The Loons Theatre Trust Only Bones	7.30pm

SATURDAY FEBURARY 6TH

Fat Tony's Roaring Swine	5-7pm
Civil & Naval DJ	
The Loons Theatre Trust Only Bones	7.30pm

SUNDAY FEBURARY 7TH

Fat Tony's Happy Hour	5-7pm
Freemans Carmel Courtney and Friends	3.30pm
Live at the Point Lindon Puffin	1-3pm
Porthole Bar Jam Session	3.30pm
The Loons Theatre Trust Only Bones	7.30pm

GALLERIES:

Lytel Gallery
50 Works Gallery Lisa Powers Photographs Past and Present Feb 4th

The French Connection R Le Couteur and N De Lauder

Oxford St Art
Frankie Baker & Michelle Clark Feb 5th

COMING UP:

Nostalgia Festival

Ferrymead Heritage Park February 20th 12.30-7.30pm
\$39 The Phenix Foundation, Devlish Mary and the Holy Rollers, Tami Neilson, The Eastern, Fraser Ross
Wunderbar Feb 19th Paul Urbana Jones 425 8pm

Community Activities in and around the Harbour this Week

MONDAY

Community Choir

7.30pm Union Chapel, Winchester Street, Lyttelton.
All welcome. Jillie 021 152 8068

Diamond Harbour Yoga

6.30pm - 8pm
General Class
Diamond Harbour Rugby Rooms

Lyttelton Youth Centre

3-7pm Drop in 10-20years
4-6.30pm Carving Course
7-9pm Boys Group 10-13
7 Dublin St Lyttelton 328 7427

TUESDAY

Community House

Shared Lunch 12.00pm 7 Dublin Street
Make new friends

Diamond Harbour Yoga

6am - 7am
Early Bird Class
Diamond Harbour Stage Rooms

Lyttelton Health Qigong for Seniors

9.30am - 10.30am
Union Church, Winchester Street \$5
Geraldine Parkes 03 328 7284 or 027 644 4455

Lyttelton Library Storytimes

11.00-11.30am

Lyttelton Yoga

9.30am - 10.45am
6.30pm - 8pm
Scouts Den Lyttelton
Contact Rebecca Boot 021 071 0336

Diamond Harbour Bridge Club

1.20pm for 1.30pm start
Diamond Harbour Football Club Rooms. \$4 table
For more information call 329 4868 or 329 4149

Lyttelton Library Science Alive

3.30-4.30pm

Lyttelton St John Youth Division

6.00pm St John Ambulance Station
52 London St, Lyttelton

Lyttelton Youth Centre

2-8pm Drop In 10-20 years
7-9pm Girls Group 10-13 years
7 Dublin St Lyttelton 328 7427

St Josephs Worker Catholic Church

9am Mass 21 Exeter Street, Lyttelton
All Welcome More information call 384 1600

WEDNESDAY

Diamond Harbour Singers

7.30 - 9.00pm
Every Wednesday in Stage Room of Community Hall.
All welcome. Contact Margie 329 3331

Diamond Harbour Yoga

6am - 7am
Early Bird Class
Diamond Harbour Stage Rooms

Lyttelton Cubs

6.30pm Contact Mark Brabyn 027 281 6180

Lyttelton Garage Sale

10.00am 54a Oxford Street, Lyttelton
Second Hand Bargains and more.

Lyttelton Harbour Fruit and Vegetable Collective

Is trading again each Wednesday between 12.30pm
and 2.30pm at the Union Church in Winchester Street.
Contact Jill Larking for more info 027 237 4960

Lyttelton Library Wednesdays Knit and Yarn

10.00-12.00pm

Lyttelton Play Group

Lyttelton Playgroup
At Kidsfirst Lyttelton
12.30pm- 2.30pm
33 Winchester St Lyttelton
Call 03 328 8689 for more information

Lyttelton Youth Centre

3-6pm Underage Drop In 7-9 years
6-8pm Drop in
7 Dublin St Lyttelton 328 7427

THURSDAY

Community House Flat Walking Group.

10am
Contact Hannah Sylvester. Ph: 741 1427

Diamond Harbour Yoga

6am - 7am
Early Bird Class
Diamond Harbour Stage Rooms

Governors Bay Volunteer Fire Brigade

7.00pm Governors Bay Fire Station
Weekly Training
New Members Welcome

Lyttelton Garage Sale

10.00am 54a Oxford Street, Lyttelton
Second Hand Bargains and more.

Lyttelton Volunteer Fire Brigade

7.00pm Lyttelton Fire Station
Weekly Training
New Members Welcome

Community Activities in and around the Harbour this Month

Lyttelton Youth Centre

2-7pm Drop In
7-9 Girls Group 10-13 years
7 Dublin St Lyttelton 328 7427

FRIDAY

Diamond Harbour Yoga

6am - 7am
Gentle Class
Diamond Harbour Rugby Rooms

Lyttelton Garage Sale

10.00am 54a Oxford Street,
Lyttelton Second Hand Bargains and more.

Lyttelton Library Fridays Babytimes

10.30-11.00am

Lyttelton Yoga

9.30am - 10.45am
Scouts Den Lyttelton
Contact Rebecca Boot 021 071 0336

Lyttelton Youth Centre

2-7pm Drop In
7-9 Girls Group 10-13 years
7 Dublin St Lyttelton 328 7427

SATURDAY

Lyttelton Farmers Market

10.00am London Street,
Lyttelton Fresh produce, Live Music, Buskers and More

Lyttelton Garage Sale

10.00am 54a Oxford Street, Lyttelton
Second Hand Bargains and more.

Lyttelton Harbour Bazaar Market

10.00am No 6 London St. Artists, Bric a Brac and More

SUNDAY

St Saviour's at Holy Trinity

17 Winchester Street
10.00am Service with Holy Communion

2nd Sunday of every month only
Port Hills Uniting Church Service
10am Sunday Worship

All Welcome

Diamond Harbour Civil Defence

7.00pm Third Wednesday of the month.
Community Church Diamond Harbour
Contact: Wendy Coles 0211541434

Governors Bay Civil Defence

7.00pm Third Wednesday of the month.
Governors Bay Fire Station Contact
Contact: Ian Palmer 3299 160

Lyttelton Civil Defence

7.00pm Third Wednesday of the month.
Lyttelton Information Centre
Contact: Brenda Hurl 021 359 059

Lyttelton Menz Shed

Contact Christine 741 1427

Lyttelton Museum Historical Society

Contact Liza Rossie 021 211 0832

Lyttelton Lions

7.30pm Second Tuesday Each Month
Lyttelton Community House
Contact: Mary 03 328 8523

Lyttelton Mt Herbert Community Board

9.30am Third Wednesday Each Month
Meetings Open to the Public

Lyttelton Rugby Club

For details visit the club Facebook Page or contact the club's Rugby Manager
Nathan.mauger@gmail.com 021 111 6069

Lyttelton Time Bank

10-4pm Tuesday to Friday
20 Oxford St Lyttelton
328 9093 www.lyttelton.net.nz/timebank

Naval Point Old Salts Lunch

The Old Salts Lunch is being held on the 2nd Tuesday of every 2nd month with the next one being held next Tuesday, 10th February starting @ 12:00 with 2 course lunch commencing @ 12:45.
Contact Barry Bowater 329 4828 or 0272743520

St Joseph the Worker R.C.Church

5.30pm Mass 3rd Sunday of the month. Parish House
21 Exeter Street Lyttelton.
For more information call 384 1600

PLACES TO STAY

B&B Homestay 2 Coleridge Terrace	Single Room Available 021 252 1256	Janetkennedynz@gmail.com
B@B Settlers Retreat 153 Governors Bay Road	021 186 5220 021 144 2979	thackergj@slingshot.co.nz Hosts: John and Gaynor Thacker
Cass Bay Retreat Governors Bay Road, Cass Bay	027 878 7867	cassbayretreat.co.nz
Diamond Harbour Lodge 51 Koromiko Crescent, Diamond Harbour	03 329 4005 021 103 7080	diamondharbourlodge.co.nz Host: Robyn and Pete
Dockside Apartment CLOSED UNTIL CHRISTMAS 22 Sumner Road, Lyttelton	027 448 8133	dockside.co.nz Host: Grant and Kathy
Governors Bay Bed and Breakfast Governors Bay Road, Governors Bay	03 329 9727	gbbedandbreakfast.co.nz Host: Eva
Governors Bay Hotel 52 Main Road, Governors Bay	03 329 9433 021 611 820	governorsbayhotel.co.nz Host: Jeremy and Clare
Harbour Lodge 1 Selwyn Road, Lyttelton	027 242 7886	info@harbourlodge.co.nz www.harbourlodge.co.nz
Il Sogno Bed & Breakfast 58 Koromiko Crescent Church Bay		ilsogno@snap.net.nz Host: Graeme and Angela
Little River Camping Ground 287 Okuti Valley, Little River	03 325 1014 021 611 820	littlerivercampground.co.nz Host: Marcus
Orton Bradley Park Camper Van Stay Marine Drive, Charteris Bay	03 329 4730	ortonbradley.co.nz Host: Ian
Out Of The Window Bach Diamond Harbour	03 328 7677 027 8774691	Min 2 nights
The Rookery 9 Ross Terrace	03 328 8038	therookery.co.nz Host: Rene and Angus

EAT, DRINK, DINE

London Street Dairy 34 London Street, Lyttelton	03 328 9350	Open 7 Days 7.30am to 10pm Meet: Andrew and Glenn
Roots Restaurant 8 London Street, Lyttelton	03 328 7658	rootsrestaurant.co.nz Meet: Giulio and Christy

thelyttelldirectory

2015 | 2016 your call to support local businesses around the harbour

THINGS TO DO

Black Cat Cruises Quail Island Adventure B-Jetty, Lyttelton Wharf [Below Oxford Street]	03 328 9078 0800 436 574	blackcat.co.nz
Christchurch Gondola 10 Bridle path Road, Heathcote valley	03 384 0310	welcomeaboard.co.nz
International Antarctic Centre 38 Orchard Road, Christchurch Airport	0508 736 4846	iceberg.co.nz
Jack Tar Sailing Dampier Bay Marina, Lyttelton	03 389 9259 027 435 5239	jacktarsailing.co.nz Skipper: Mike Rossouw
Orton Bradley Park Marine Drive, Charteris Bay	03 329 4730	ortonbradley.co.nz

LOCAL EXPORTS

Lyttelsoft Specialising in Accounting Software	03 328 8671	lyttelsoft.co.nz Meet: Penny Mercer
Real Homes New Zealand Limited PO Box 94, Lyttelton	03 390 3393 021 224 6637	realhomes.co.nz Real Estate Agent: Lynnette Baird
Masonry Works Architectural Stonemason and Brickwork	021 0816 6983	masonryworks.nz@gmail.com www.masonryworks.net
Saunders & Co 1063 Ferry Road, Ferrymead	03 940 2435 022 133 6963	saunders.co.nz
All Clear Chimney Cleaning Chimney's gutters, fires and difficult maintenance jobs.	03 329 4772 0224 4010203	www.allclearchimneycleaning.co.nz brunoallclear@gmail.com

HEALTH, BEAUTY, FITNESS

Christchurch Yoga Scout Den, Charlotte Quay, Lyttelton	021 071 0336	Christchurchyoga.co.nz Instructor: Rebecca Boot
Honey Comb 34 London Street, Lyttelton	03 328 8859	honeycombhair@extra.co.nz or see our facebook page



CHRISTCHURCH CROWN OCEAN SWIM SATURDAY 13 FEBRUARY 2016



Dear Residents,

The Christchurch Crown event, part of the New Zealand Ocean Swim Series is taking place on Saturday 13 February 2016.

The key details of this year's event are below:

When:

- Saturday 13 February 2016

What:

- 900+ swimmers will take part across four ocean swim courses, supported by Surf Life Saving New Zealand
- 'Give it a go' 300m starts at 8.30AM
- 'Step It up' 1km starts at 9.00AM
- OceanKids 200m starts at 9.45AM
- 'I'm Going Long 3.3km' starts at 11.30AM

Where:

- All swims start and finish at Corsair Bay, Lyttelton
- All course maps and additional event information can be found at: oceanswim.co.nz/event/christchurch-crown/



IMPORTANT INFORMATION

- Cass Bay Boat Ramp is closed from 11.30am – 1.30pm on Saturday 13th February 2016
- No vessels are permitted within the swim courses or the immediate vicinity during the stated race times. All vessels in the area during the event are asked to take extreme care and asked to adhere to instruction from event officials for the safety of all involved (including being asked to stop until safe to proceed)
- Corsair Bay Car Park is closed from 2pm on Friday 12th February 2016 through to 4pm on Saturday 13th February 2016

This event has been approved by Christchurch City Council, Environment Canterbury & Surf Life Saving NZ

If you have any questions or concerns regarding this email or the event please don't hesitate to phone on 09 486 0240 or email info@oceanswim.co.nz

We appreciate your co-operation.

Thank you & regards

Scott Rice
Event Director
New Zealand Ocean Swim Series